

http://130.149.60.45/~farbmetrik/PE89/PE89L0NP.PDF /.PS; start output
N: no 3D-linearization (OL) in file (F) or PS-startup (S), page 1/2

Input and Output: Printer Reflective System FRS06a

Data for any device (d) or elementary (e) colour:

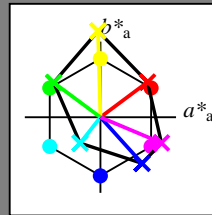
HIC^*_{-}

hue text for the colours of this page:

$H^*_{-} = R00Y_{-}, R25Y_{-}, \dots, B75R_{-}$

ORS20a; adapted (a) CIELAB data

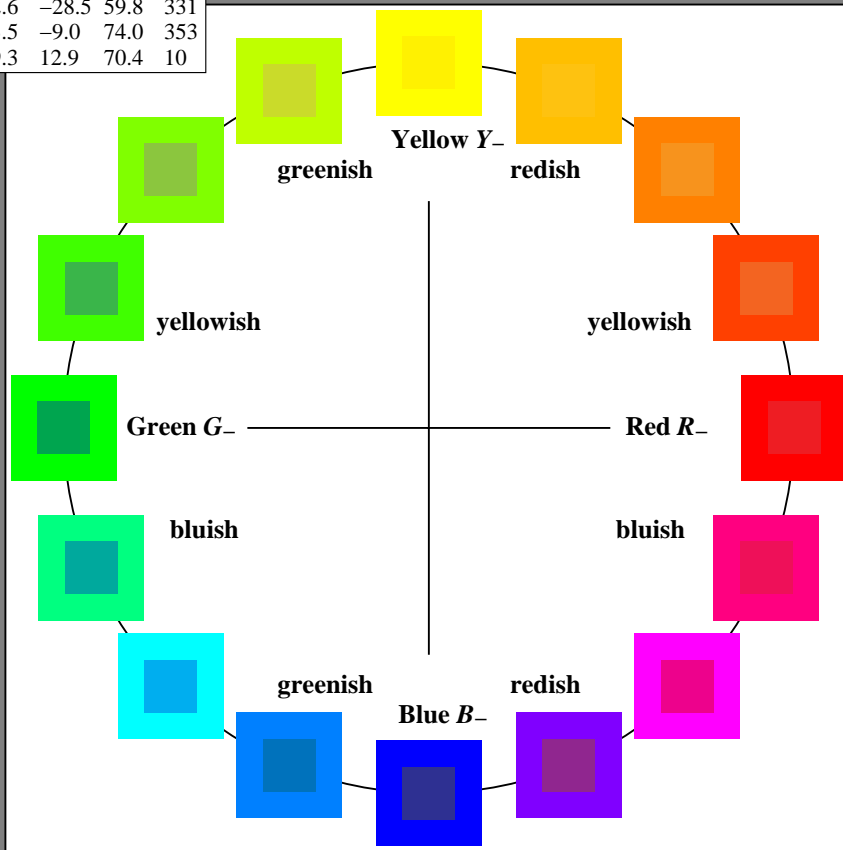
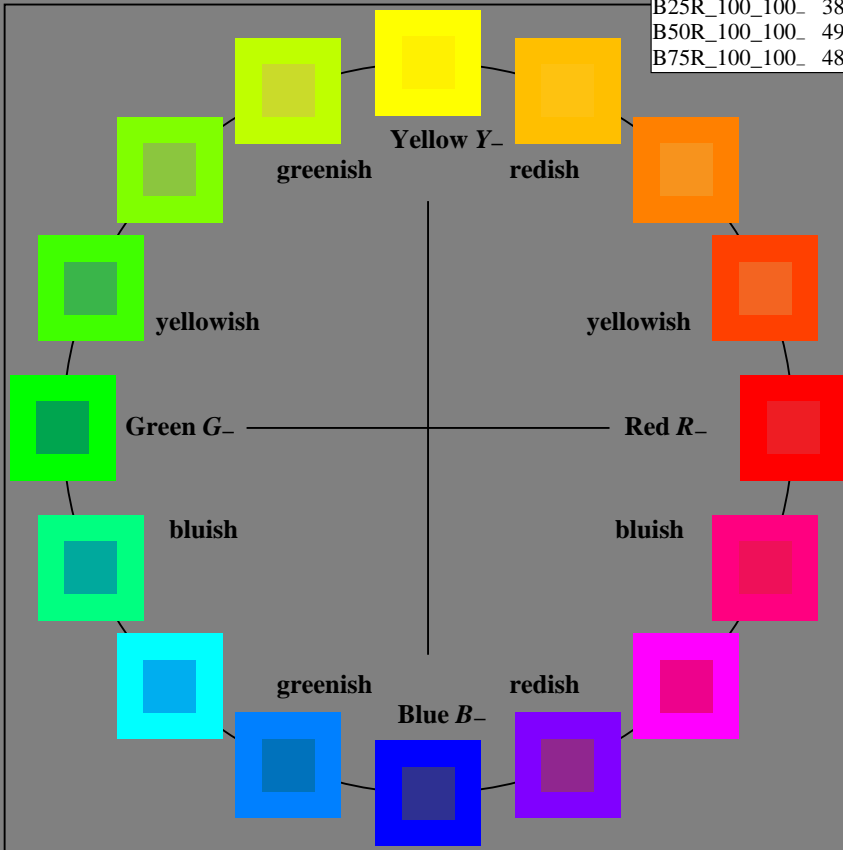
| H^*_{-} | $L^* = L^*_a a^*_a$ | b^*_a | $C^*_{ab,a}$ | $h^*_{ab,a}$ | |
|---------------|---------------------|---------|--------------|--------------|-----|
| R00Y_100_100_ | 48.4 | 66.1 | 40.2 | 77.3 | 31 |
| R25Y_100_100_ | 56.8 | 48.0 | 50.5 | 69.6 | 46 |
| R50Y_100_100_ | 68.6 | 25.0 | 63.9 | 68.6 | 68 |
| R75Y_100_100_ | 80.6 | 4.8 | 77.2 | 77.3 | 86 |
| Y00G_100_100_ | 90.2 | -9.6 | 88.2 | 88.7 | 96 |
| Y25G_100_100_ | 83.2 | -18.4 | 79.9 | 81.9 | 102 |
| Y50G_100_100_ | 73.3 | -31.7 | 62.7 | 70.2 | 116 |
| Y75G_100_100_ | 62.0 | -49.7 | 43.2 | 65.8 | 139 |
| G00B_100_100_ | 55.8 | -65.2 | 33.8 | 73.4 | 152 |
| G25B_100_100_ | 59.3 | -50.3 | -9.0 | 51.0 | 190 |
| G50B_100_100_ | 63.0 | -30.5 | -42.0 | 51.9 | 234 |
| G75B_100_100_ | 45.7 | -5.7 | -44.6 | 44.9 | 262 |
| B00R_100_100_ | 27.5 | 25.9 | -47.3 | 53.9 | 298 |
| B25R_100_100_ | 38.3 | 52.6 | -28.5 | 59.8 | 331 |
| B50R_100_100_ | 49.5 | 73.5 | -9.0 | 74.0 | 353 |
| B75R_100_100_ | 48.9 | 69.3 | 12.9 | 70.4 | 10 |



%Gamut
 $u^*_{rel} = 114$
 %Regularity
 $g^*_{H,rel} = 28$
 $g^*_{C,rel} = 38$

FRS06a; adapted (a) CIELAB data

| name | $L^* = L^*_a a^*_a$ | b^*_a | $C^*_{ab,a}$ | $h^*_{ab,a}$ | |
|---------|---------------------|---------|--------------|--------------|-----|
| R_.,Ma | 32.5 | 62.3 | 46.4 | 77.7 | 36 |
| Y_.,Ma | 82.7 | -3.1 | 113.9 | 114.0 | 91 |
| G_.,Ma | 39.4 | -61.8 | 45.8 | 76.9 | 143 |
| C_.,Ma | 47.8 | -26.8 | -34.2 | 43.4 | 231 |
| B_.,Ma | 10.1 | 55.1 | -61.0 | 82.2 | 312 |
| M_.,Ma | 34.5 | 80.6 | -33.9 | 87.5 | 337 |
| N_.,Ma | 6.2 | 0.0 | 0.0 | 0.0 | 0 |
| W_.,Ma | 91.9 | 0.0 | 0.0 | 0.0 | 0 |
| R_.,CIE | 39.9 | 58.7 | 27.9 | 65.0 | 25 |
| Y_.,CIE | 81.2 | -2.8 | 71.5 | 71.6 | 92 |
| G_.,CIE | 52.2 | -42.4 | 13.6 | 44.5 | 162 |
| B_.,CIE | 30.5 | 1.4 | -46.4 | 46.4 | 271 |



see similar files: http://130.149.60.45/~farbmetrik/PE89/PE89L0NP.PDF /.PS; start output
technical information: http://www.ps.bam.de or http://130.149.60.45/~farbmetrik

TUB registration: 20150701-PE89/PE89L0NP.PDF /.PS
application for measurement of laser printer output

TUB material: code=rh4d4a

1-003030-L0 PE890-7N

TUB-test chart PE89; 16 step hue circle
Test chart according to DIN 33872, 3D=0, de=0, cmyk

input: rgb/cmyk -> rgb/cmyk
output: no change