

test no 2 pour un rendu de couleurs – couleurs métamères pour D65 et D50; impression offset (CMYK); rgb->rgbdd

series :
métamère
m
D65

central
z
D65/D50

métamère
m
D50

métamère
m
D65

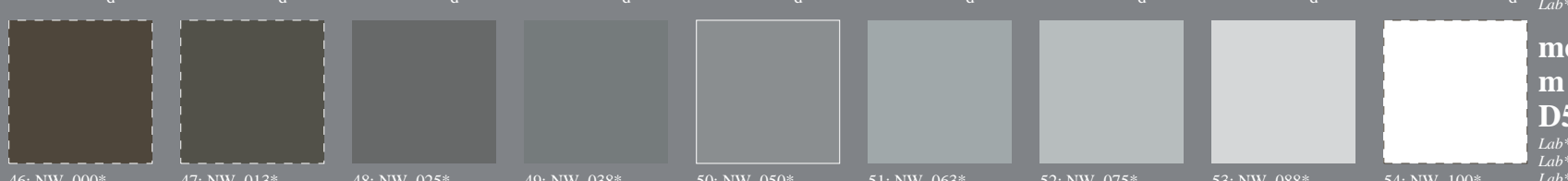
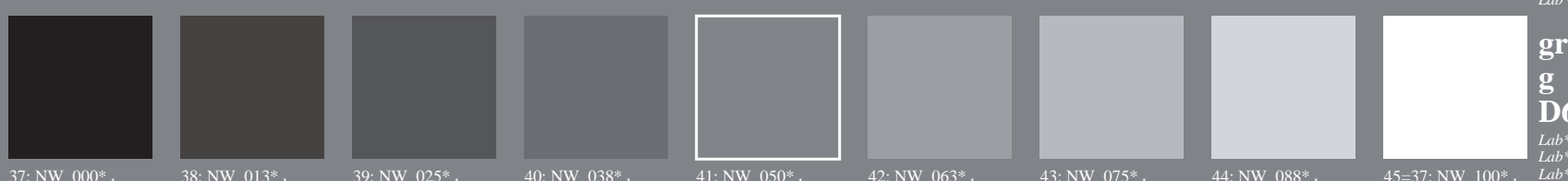
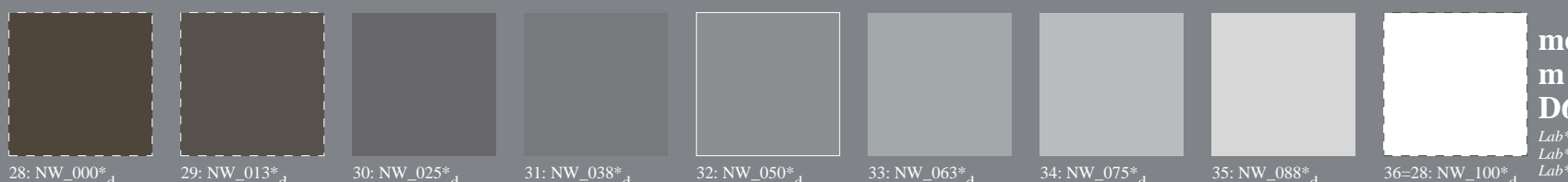
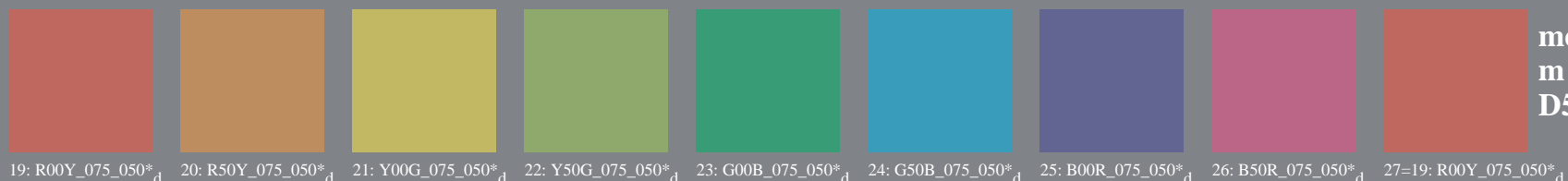
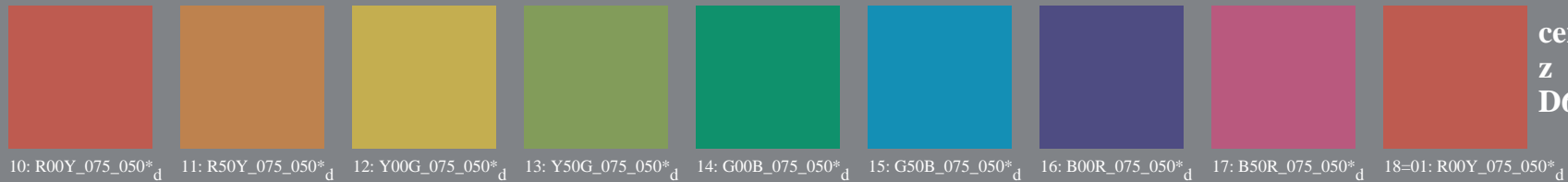
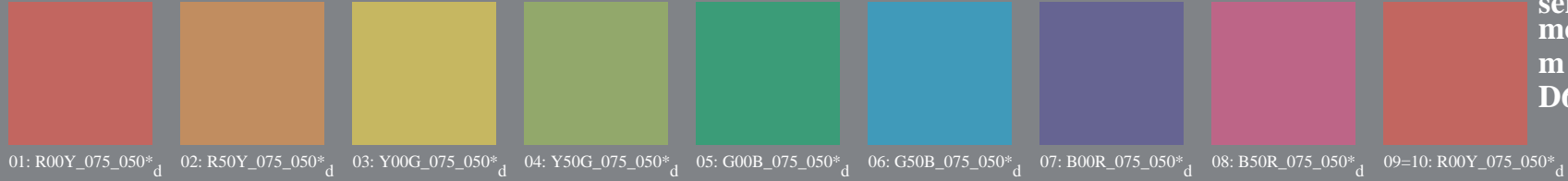
gris
g
D65/D50

métamère
m
D50

Lab*N0=17.7, 0.6, 0.6
Lab*W0=95.4, 1.3, -4.9
Lab*N=24.3, -5.6, -6.8
Lab*W=95.6, 1.4, -5.0

Lab*N0=17.7, 0.6, 0.6
Lab*W0=95.4, 1.3, -4.9
Lab*N=17.7, 0.8, 0.6
Lab*W1=95.4, 0.8, -4.9

Lab*N1=17.7, 0.8, 0.6
Lab*W1=95.4, 0.8, -4.9
Lab*N=24.0, -5.6, -7.3
Lab*W=95.5, 0.9, -5.0



voir fichiers similaires: <http://130.149.60.45/~farbmetrik/PF23/PF23L0FP.PDF /.PS>
Informations techniques: <http://www.ps.bam.de> ou <http://130.149.60.45/~farbmetrik>

TUB enregistrement: 20130201-PF23/PF23L0FP.PDF /.PS
application pour la mesure des sorties sur offset, séparation cmyk6* (CMYK)
TUB matériel: code=thad4ta