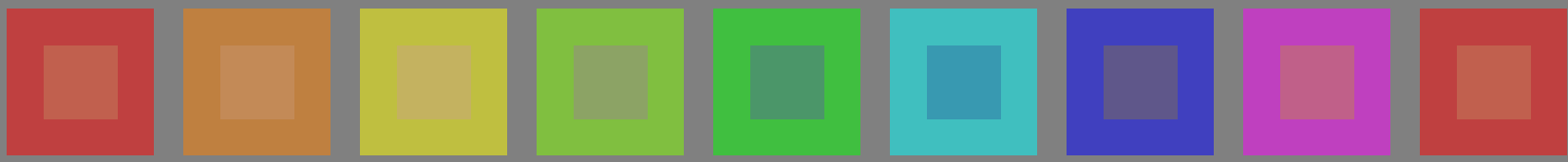


test no 3 pour un rendu de couleurs – couleurs métamères pour A et P4000; impression offset (CMYK)

voir fichiers similaires: <http://130.149.60.45/~farbmetrik/PF33/PF33.HTM>
informations techniques: <http://www.ps.bam.de> ou <http://130.149.60.45/~farbmetrik>

TUB enregistrement: 20130201 -PF33/PF33L0FP.PDF /.PS
application pour la mesure des sorties sur offset

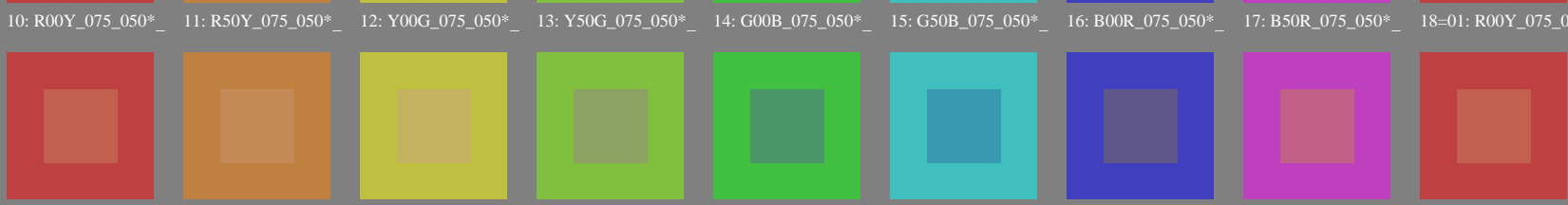
TUB matériel: code=rh4ta



series :
métamère
m
A



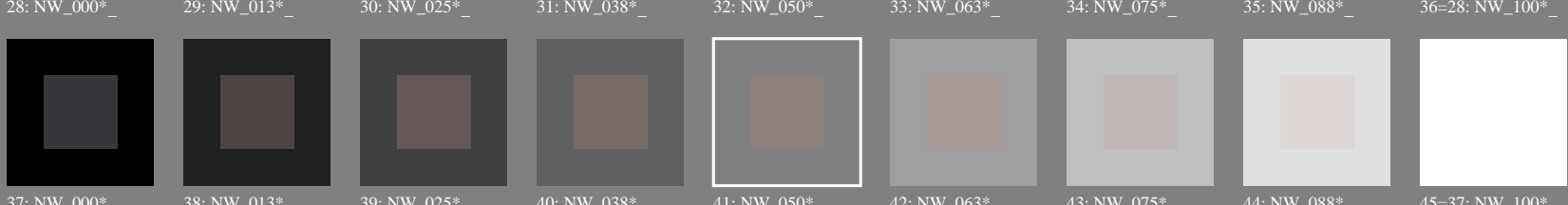
central
z
A/P4000



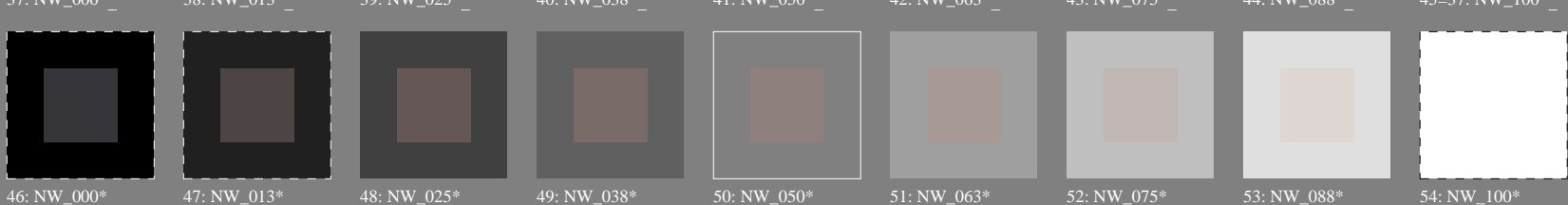
métamère
m
P4000



métamère
m
A



gris
g
A/P4000



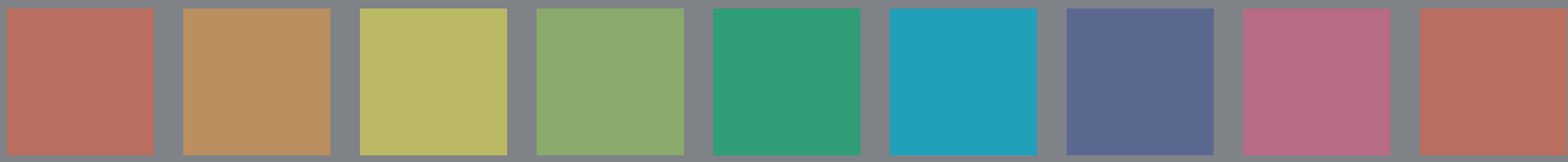
métamère
m
P4000

3-103030-L0 PF330-7N

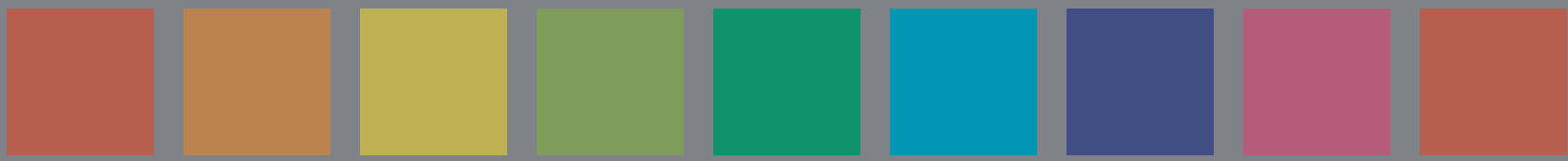
test no 3 pour un rendu de couleurs – couleurs métamères pour A et P4000; impression offset (CMYK); rgb->rgbd

voir fichiers similaires: <http://130.149.60.45/~farbmetrik/PF33/PF33.HTM>
informations techniques: <http://www.ps.bam.de> ou <http://130.149.60.45/~farbmetrik>

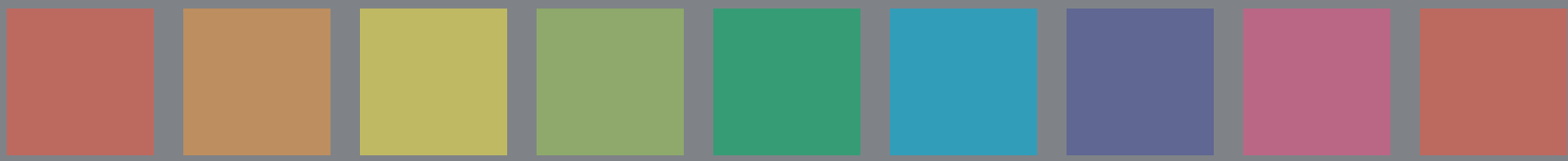
TUB enregistrement: 20130201 -PF33/PF33L0FP.PDF /.PS TUB matériel: code=rh4ta
application pour la mesure des sorties sur offset, séparation cmyk6* (CMYK)



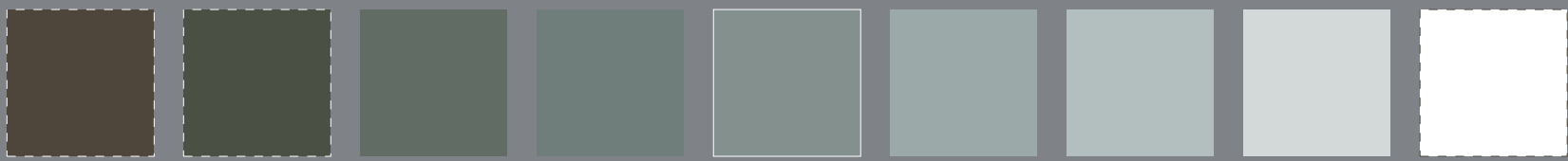
series :
métamère
m
A



central
Z
A/P4000

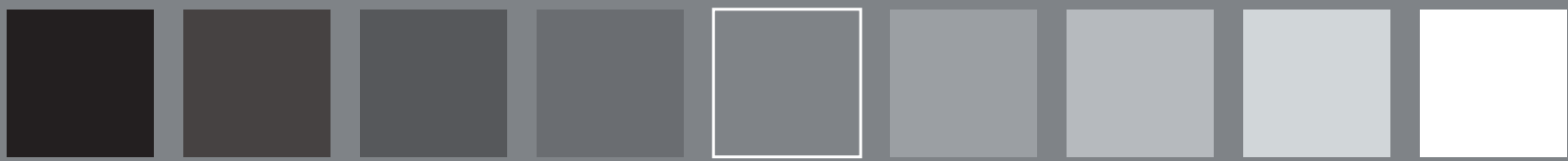


métamère
m
P4000



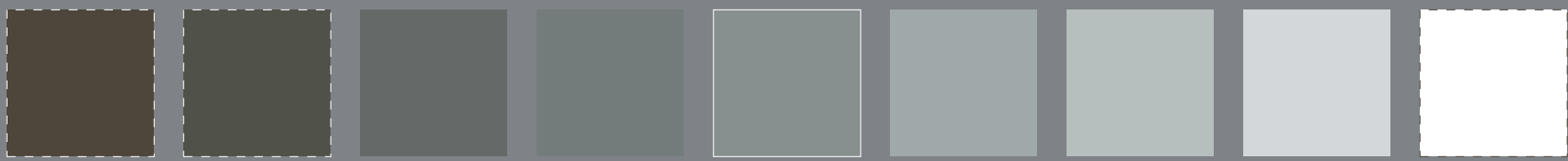
métamère
m
A

Lab*N0=17.8, 1.3, 0.7
Lab*W0=95.3, 0.3, -4.9
Lab*N=23.1, -3.5, -9.1
Lab*W=95.4, 0.3, -5.0



gris
g
A/P4000

Lab*N0=17.8, 1.3, 0.7
Lab*W0=95.3, 0.3, -4.9
Lab*N1=17.7, 1.0, 0.7
Lab*W1=95.3, 0.6, -5.0



métamère
m
P4000

Lab*N1=17.7, 1.0, 0.7
Lab*W1=95.3, 0.6, -5.0
Lab*N=23.7, -5.0, -8.0
Lab*W=95.5, 0.6, -5.1

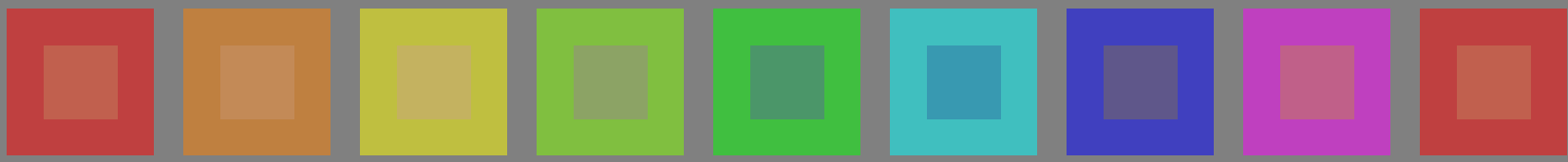
3-103130-L0 PF330-72

test no 3 pour un rendu de couleurs – couleurs métamères pour A et P4000; impression offset (CMYK)

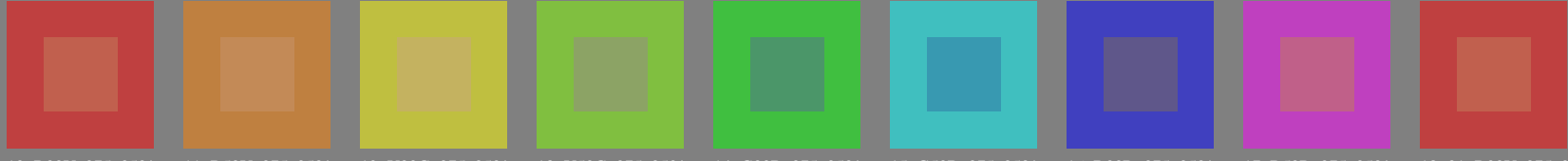
voir fichiers similaires: <http://130.149.60.45/~farbmetrik/PF33/PF33L0FP.PDF> / .PS
informations techniques: <http://www.ps.bam.de> ou <http://130.149.60.45/~farbmetrik>

TUB enregistrement: 20130201 -PF33/PF33L0FP.PDF /.PS
application pour la mesure des sorties sur offset

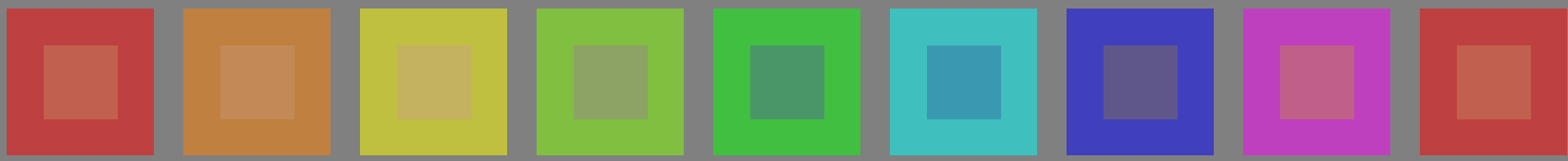
TUB matériel: code=rh4ta



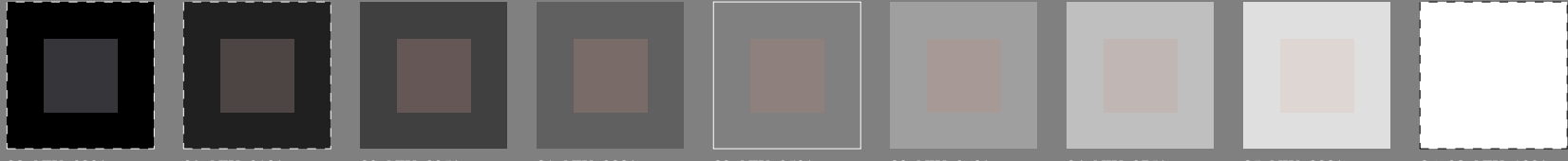
series :
métamère
m
A



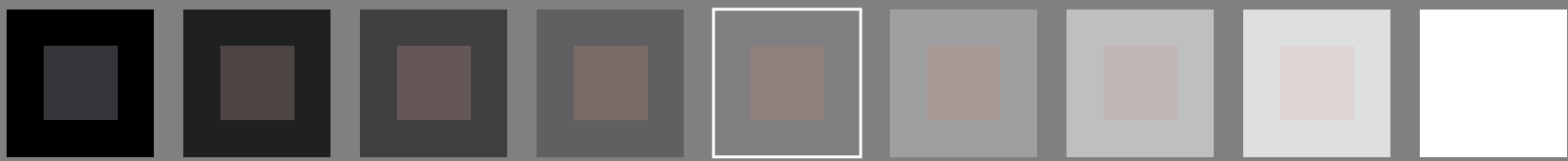
central
z
A/P4000



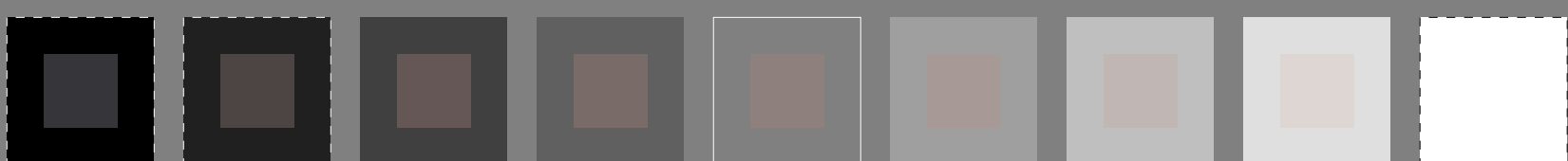
métamère
m
P4000



métamère
m
A



gris
g
A/P4000

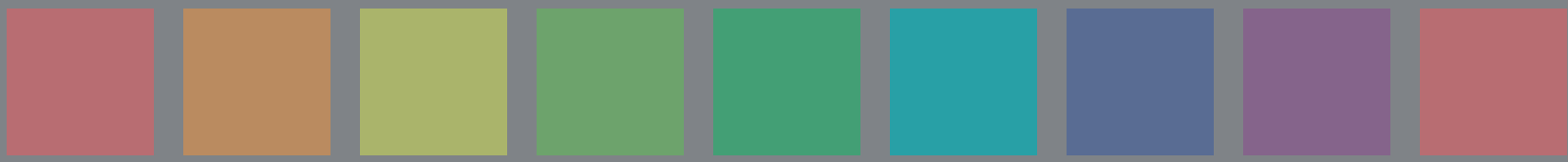


métamère
m
P4000

test no 3 pour un rendu de couleurs – couleurs métamères pour A et P4000; impression offset (CMYK); rgb->rgb_{de}

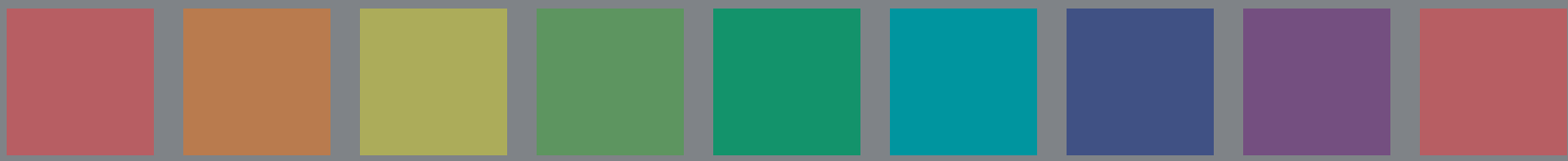
voir fichiers similaires: <http://130.149.60.45/~farbmetrik/PF33/PF33.HTM>
informations techniques: <http://www.ps.bam.de> ou <http://130.149.60.45/~farbmetrik>

TUB enregistrement: 20130201 -PF33/PF33L0FP.PDF /.PS TUB matériel: code=rh4ta
application pour la mesure des sorties sur offset, séparation cmyk6* (CMYK)



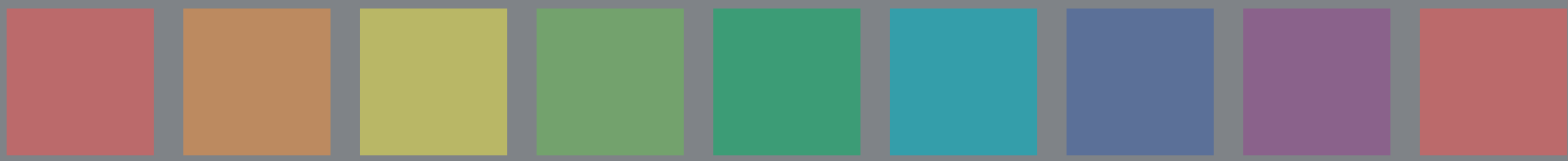
series :
métamère
m
A

01: R00Y_075_050* 02: R50Y_075_050* 03: Y00G_075_050* 04: Y50G_075_050* 05: G00B_075_050* 06: G50B_075_050* 07: B00R_075_050* 08: B50R_075_050* 09-10: R00Y_075_050*



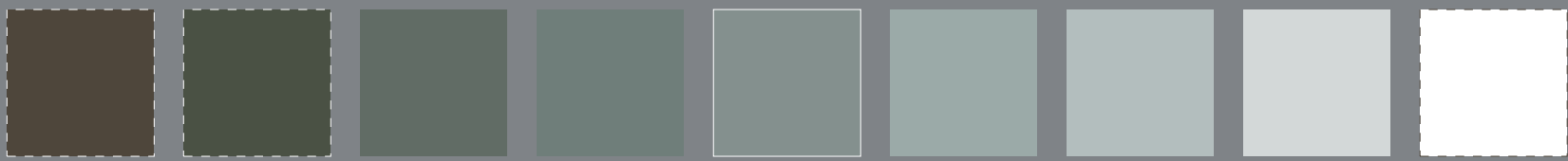
central
z
A/P4000

10: R00Y_075_050* 11: R50Y_075_050* 12: Y00G_075_050* 13: Y50G_075_050* 14: G00B_075_050* 15: G50B_075_050* 16: B00R_075_050* 17: B50R_075_050* 18-01: R00Y_075_050*



métamère
m
P4000

19: R00Y_075_050* 20: R50Y_075_050* 21: Y00G_075_050* 22: Y50G_075_050* 23: G00B_075_050* 24: G50B_075_050* 25: B00R_075_050* 26: B50R_075_050* 27-19: R00Y_075_050*



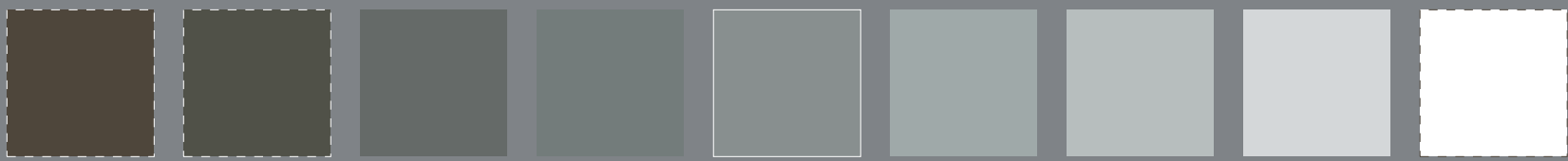
métamère
m
A
*Lab**N0=17.8, 1.3, 0.7
*Lab**W0=95.3, 0.3, -4.9
*Lab**N=23.1, -3.5, -9.1
*Lab**W=95.4, 0.3, -5.0

28: NW_000* 29: NW_013* 30: NW_025* 31: NW_038* 32: NW_050* 33: NW_063* 34: NW_075* 35: NW_088* 36-28: NW_100*



gris
g
A/P4000
*Lab**N0=17.8, 1.3, 0.7
*Lab**W0=95.3, 0.3, -4.9
*Lab**N1=17.7, 1.0, 0.7
*Lab**W1=95.3, 0.6, -5.0

37: NW_000* 38: NW_013* 39: NW_025* 40: NW_038* 41: NW_050* 42: NW_063* 43: NW_075* 44: NW_088* 45-37: NW_100*



métamère
m
P4000
*Lab**N1=17.7, 1.0, 0.7
*Lab**W1=95.3, 0.6, -5.0
*Lab**N=23.7, -5.0, -8.0
*Lab**W=95.5, 0.6, -5.1

46: NW_000* 47: NW_013* 48: NW_025* 49: NW_038* 50: NW_050* 51: NW_063* 52: NW_075* 53: NW_088* 54: NW_100*

3-113130-L0 PF330-73