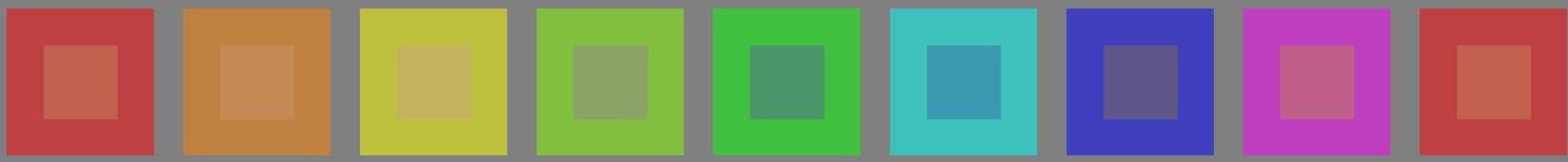


test no 3 pour un rendu de couleurs – couleurs métamères pour A et P4000; impression laser (CMYK)

voir fichiers similaires: <http://130.149.60.45/~farbmetrik/PF39/PF39.HTM>
informations techniques: <http://www.ps.bam.de> ou <http://130.149.60.45/~farbmetrik>

TUB enregistrement: 20130201 -PF39/PF39L0NP.PDF /.PS
application pour la mesure des sorties sur imprimante laser

TUB matériel: code=rh4ta



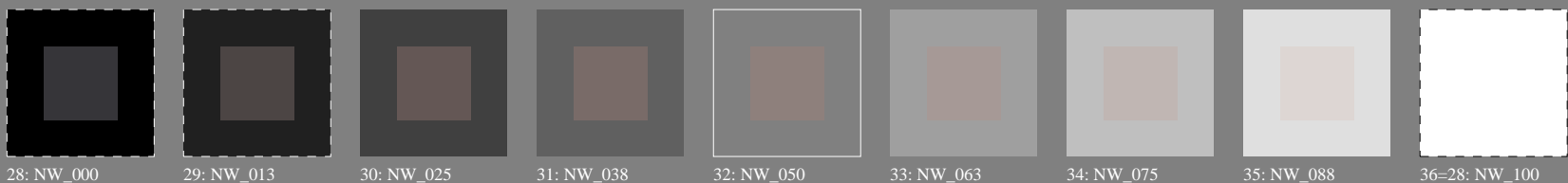
series :
métamère
m
A



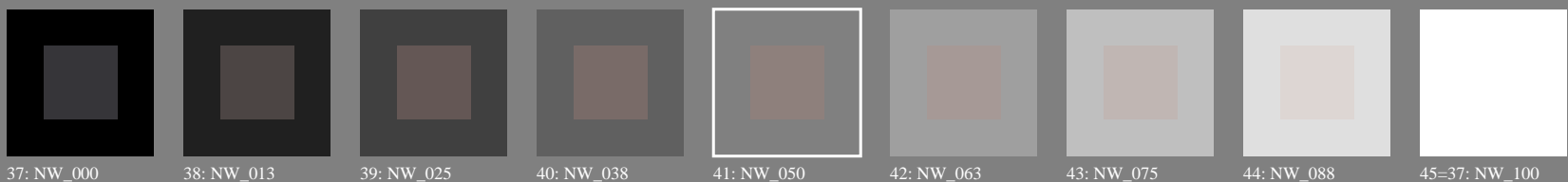
central
z
A/P4000



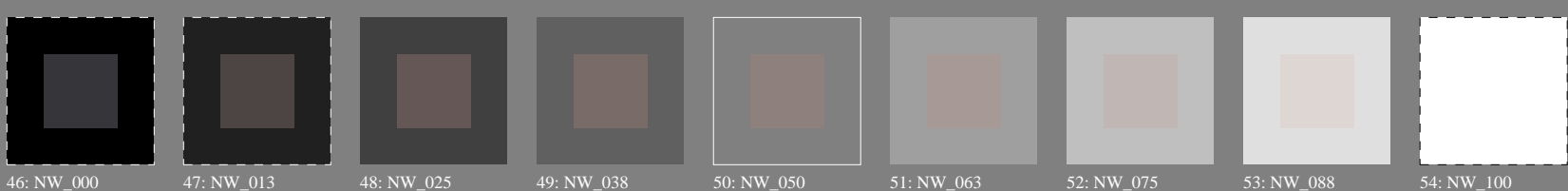
métamère
m
P4000



métamère
m
A



gris
g
A/P4000



métamère
m
P4000

test no 3 pour un rendu de couleurs – couleurs métamères pour A et P4000; impression laser (CMYK); rgb->rgbd

voir fichiers similaires: <http://130.149.60.45/~farbmetrik/PF39/PF39.HTM>
informations techniques: <http://www.ps.bam.de> ou <http://130.149.60.45/~farbmetrik>

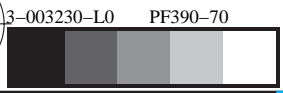
TUB enregistrement: 20130201 -PF39/PF39L0NP.PDF /.PS TUB matériel: code=rh4ta
application pour la mesure des sorties sur imprimante laser, séparation cmykn6 (CMYK)

									series : métamère m A
01: R00Y_075_050_d	02: R50Y_075_050_d	03: Y00G_075_050_d	04: Y50G_075_050_d	05: G00B_075_050_d	06: G50B_075_050_d	07: B00R_075_050_d	08: B50R_075_050_d	09=10: R00Y_075_050_d	
									central z A/P4000
10: R00Y_075_050_d	11: R50Y_075_050_d	12: Y00G_075_050_d	13: Y50G_075_050_d	14: G00B_075_050_d	15: G50B_075_050_d	16: B00R_075_050_d	17: B50R_075_050_d	18=01: R00Y_075_050_d	
									métamère m P4000
19: R00Y_075_050_d	20: R50Y_075_050_d	21: Y00G_075_050_d	22: Y50G_075_050_d	23: G00B_075_050_d	24: G50B_075_050_d	25: B00R_075_050_d	26: B50R_075_050_d	27=19: R00Y_075_050_d	
									métamère m A <i>Lab*N0=17.8, 1.3, 0.7</i> <i>Lab*W0=95.3, 0.3, -4.9</i> <i>Lab*N1=23.1, -3.5, -9.1</i> <i>Lab*W1=95.4, 0.3, -5.0</i>
28: NW_000_d	29: NW_013_d	30: NW_025_d	31: NW_038_d	32: NW_050_d	33: NW_063_d	34: NW_075_d	35: NW_088_d	36=28: NW_100_d	
									gris g A/P4000 <i>Lab*N0=17.7, 1.0, 0.7</i> <i>Lab*W0=95.3, 0.3, -4.9</i> <i>Lab*N1=17.7, 1.0, 0.7</i> <i>Lab*W1=95.3, 0.6, -5.0</i>
37: NW_000_d	38: NW_013_d	39: NW_025_d	40: NW_038_d	41: NW_050_d	42: NW_063_d	43: NW_075_d	44: NW_088_d	45=37: NW_100_d	
									métamère m P4000 <i>Lab*N1=17.7, 1.0, 0.7</i> <i>Lab*W1=95.3, 0.6, -5.0</i> <i>Lab*N=23.7, -5.0, -8.0</i> <i>Lab*W=95.5, 0.6, -5.1</i>
46: NW_000_d	47: NW_013_d	48: NW_025_d	49: NW_038_d	50: NW_050_d	51: NW_063_d	52: NW_075_d	53: NW_088_d	54: NW_100_d	

3-003130-L0 PF390-70

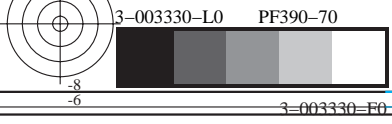
voir fichiers similaires: <http://130.149.60.45/~farbmetrik/PF39/PF39.HTM>
informations techniques: <http://www.ps.bam.de> ou <http://130.149.60.45/~farbmetrik>

TUB enregistrement: 20130201-PF39/PF39L0NP.PDF /.PS TUB matériel: code=rh4ta
application pour la mesure des sorties sur imprimante laser, séparation cmykn6 (CMYK)



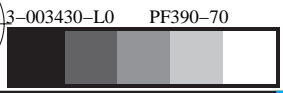
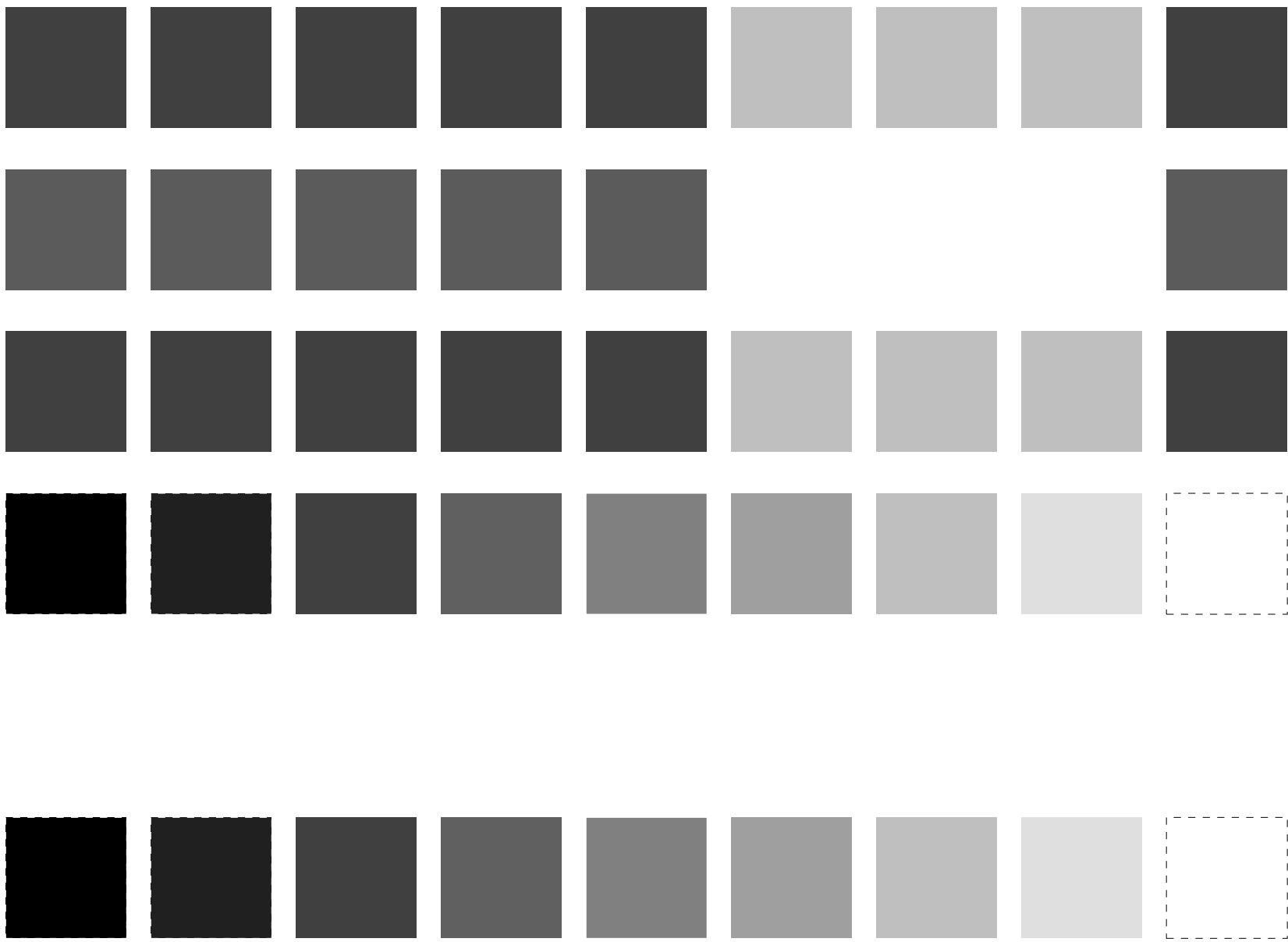
voir fichiers similaires: <http://130.149.60.45/~farbmetrik/PF39/PF39.HTM>
informations techniques: <http://www.ps.bam.de> ou <http://130.149.60.45/~farbmetrik>

TUB enregistrement: 20130201-PF39/PF39L0NP.PDF /.PS TUB matériel: code=rh4ta
application pour la mesure des sorties sur imprimante laser, séparation cmykn6 (CMYK)

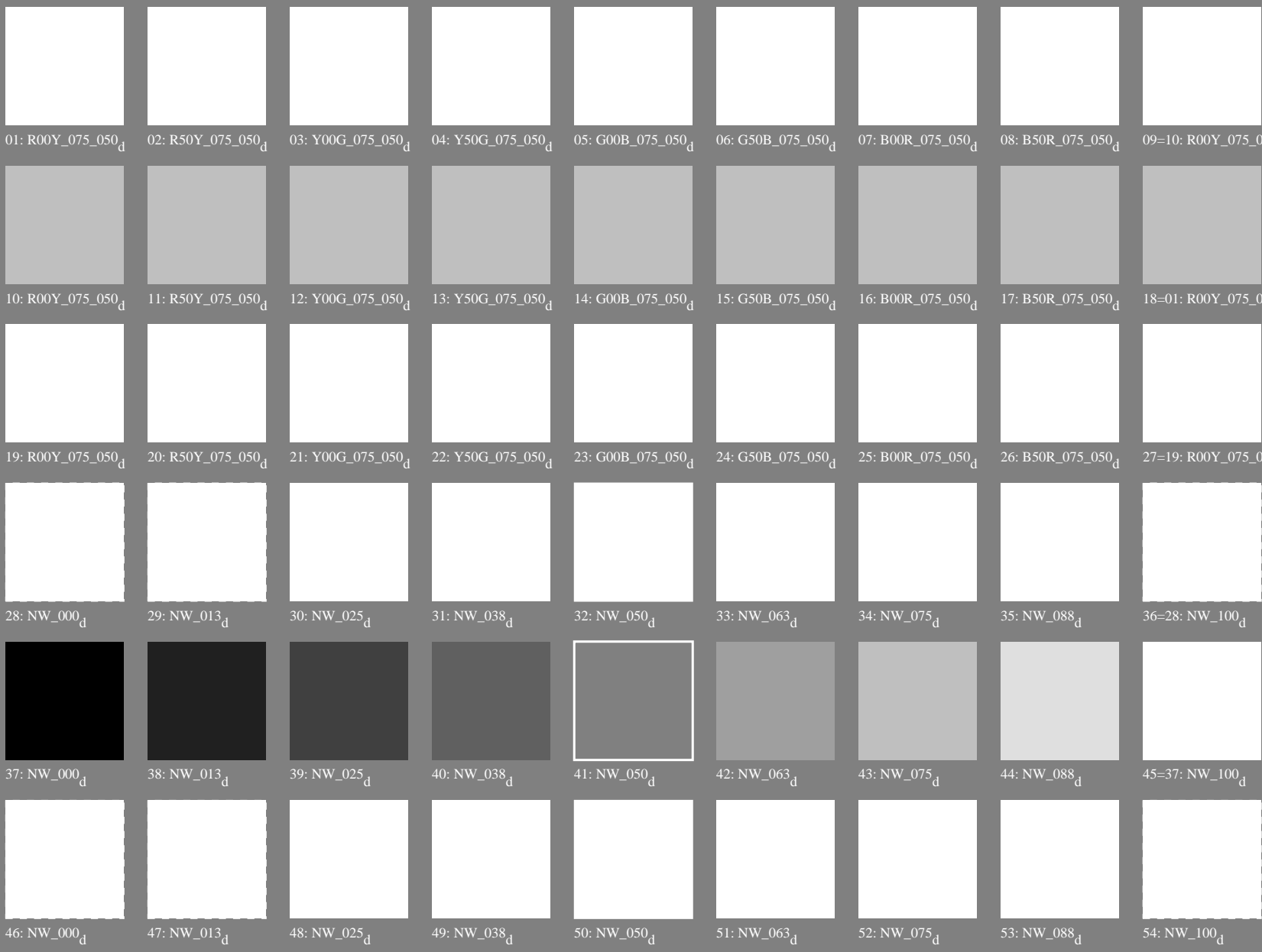


voir fichiers similaires: <http://130.149.60.45/~farbmetrik/PF39/PF39.HTM>
informations techniques: <http://www.ps.bam.de> ou <http://130.149.60.45/~farbmetrik>

TUB enregistrement: 20130201 - PF39/PF39L0NP.PDF /.PS TUB matériel: code=rh4ta
application pour la mesure des sorties sur imprimante laser, séparation cmykn6 (CMYK)



test no 3 pour un rendu de couleurs – couleurs métamères pour A et P4000; impression laser (CMYK); rgb->rgbd



series :
métamère
m
A

central
z
A/P4000

métamère
m
P4000

métamère
m
A
*Lab*N0=17.8, 1.3, 0.7*
*Lab*W0=95.3, 0.3, -4.9*
*Lab*N1=23.1, -3.5, -9.1*
*Lab*W1=95.4, 0.3, -5.0*

gris
g
A/P4000
*Lab*N0=17.8, 1.3, 0.7*
*Lab*W0=95.3, 0.3, -4.9*
*Lab*N1=17.7, 1.0, 0.7*
*Lab*W1=95.3, 0.6, -5.0*

métamère
m
P4000
*Lab*N1=17.7, 1.0, 0.7*
*Lab*W1=95.3, 0.6, -5.0*
*Lab*N=23.7, -5.0, -8.0*
*Lab*W=95.5, 0.6, -5.1*

voir fichiers similaires: <http://130.149.60.45/~farbmetrik/PF39/PF39.HTM>
informations techniques: <http://www.ps.bam.de> ou <http://130.149.60.45/~farbmetrik>

TUB enregistrement: 20130201 -PF39/PF39L0NP.PDF /.PS TUB matériel: code=rh4ta
application pour la mesure des sorties sur imprimante laser, séparation cmykn6 (CMYK)

http://130.149.60.45/~farbmetrik/PF39/PF39L0NP.PDF /.PS; sortie de transfert N: aucune linearisation 3D (OL) dans fichier (F) ou PS-startup (S), page 7/22

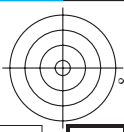
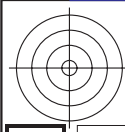
Table with columns: nrf, HHC*Fd, rgb*Fd, icr*Fd, hsa*Fd, rgb*Fd, LabCH*Fd, LabCH*Fd, DF*Fd, Hsa*Fd, rgb*Fd, LabCH*Fd, LabCH*Fd. Rows list various color patches and their corresponding colorimetric data.

graphique TUB-PF39; reproduction en couleurs couleurs et différences, ΔE*, 3D=0, de=0, cmyk

entrée : rgb/cmyk -> rrgb sortie : transférer à cmykd

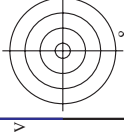
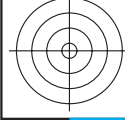
PF390-7N, 7/22-F

3-003630-F0



nrf	HC*Fd	rgb_Fd	icr_Fd	hsa_Fd	rgb*Fd	LabCH*Fd	LabCH**Fd	DF*Fd	HaM*Fd	rgb**Fd	LabCH**Yd	55.8	87.0	39.9
0/668	R00Y_100_100a	1.0	0.0	0.0	0.0	0.0	0.0	0.0	0.0	0.0	0.0	55.8	87.0	39.9
1/648	R25Y_100_100a	0.0	0.5	0.5	0.0	0.0	0.0	0.0	0.0	0.0	0.0	55.8	87.0	39.9
2/684	R50Y_100_100a	0.0	1.0	1.0	0.0	0.0	0.0	0.0	0.0	0.0	0.0	55.8	87.0	39.9
3/702	R75Y_100_100a	0.0	1.0	0.5	0.0	0.0	0.0	0.0	0.0	0.0	0.0	55.8	87.0	39.9
4/720	R100Y_100_100a	0.0	1.0	0.0	0.0	0.0	0.0	0.0	0.0	0.0	0.0	55.8	87.0	39.9
5/558	Y25C_100_100a	0.75	1.0	0.0	0.0	0.0	0.0	0.0	0.0	0.0	0.0	55.8	87.0	39.9
6/396	Y50C_100_100a	0.5	1.0	0.0	0.0	0.0	0.0	0.0	0.0	0.0	0.0	55.8	87.0	39.9
7/234	Y75C_100_100a	0.25	1.0	0.0	0.0	0.0	0.0	0.0	0.0	0.0	0.0	55.8	87.0	39.9
8/72	C00B_100_100a	0.0	1.0	0.0	0.0	0.0	0.0	0.0	0.0	0.0	0.0	55.8	87.0	39.9
9/72	C00B_100_100a	0.0	1.0	0.0	0.0	0.0	0.0	0.0	0.0	0.0	0.0	55.8	87.0	39.9
10/76	C25B_100_100a	0.0	1.0	0.5	0.0	0.0	0.0	0.0	0.0	0.0	0.0	55.8	87.0	39.9
11/84	C50B_100_100a	0.0	1.0	1.0	0.0	0.0	0.0	0.0	0.0	0.0	0.0	55.8	87.0	39.9
12/44	G5B_100_100a	0.0	1.0	0.0	0.0	0.0	0.0	0.0	0.0	0.0	0.0	55.8	87.0	39.9
13/8	B00M_100_100a	0.0	1.0	0.0	0.0	0.0	0.0	0.0	0.0	0.0	0.0	55.8	87.0	39.9
14/332	B25R_100_100a	0.5	1.0	0.0	0.0	0.0	0.0	0.0	0.0	0.0	0.0	55.8	87.0	39.9
15/652	B50R_100_100a	1.0	0.0	0.0	0.0	0.0	0.0	0.0	0.0	0.0	0.0	55.8	87.0	39.9
16/652	B75R_100_100a	1.0	0.0	0.0	0.0	0.0	0.0	0.0	0.0	0.0	0.0	55.8	87.0	39.9
17/648	R00Y_100_100a	1.0	0.0	0.0	0.0	0.0	0.0	0.0	0.0	0.0	0.0	55.8	87.0	39.9
18/688	R00Y_100_050a	1.0	0.5	0.5	0.0	0.0	0.0	0.0	0.0	0.0	0.0	55.8	87.0	39.9
19/706	R50Y_075_050a	1.0	0.75	0.5	0.0	0.0	0.0	0.0	0.0	0.0	0.0	55.8	87.0	39.9
20/724	Y00C_100_050a	1.0	1.0	0.5	0.0	0.0	0.0	0.0	0.0	0.0	0.0	55.8	87.0	39.9
21/400	C00B_100_050a	0.5	1.0	0.0	0.0	0.0	0.0	0.0	0.0	0.0	0.0	55.8	87.0	39.9
22/400	C50B_100_050a	0.5	1.0	0.5	0.0	0.0	0.0	0.0	0.0	0.0	0.0	55.8	87.0	39.9
23/400	C100B_100_050a	0.5	1.0	1.0	0.0	0.0	0.0	0.0	0.0	0.0	0.0	55.8	87.0	39.9
24/688	R00Y_100_050a	1.0	0.5	0.5	0.0	0.0	0.0	0.0	0.0	0.0	0.0	55.8	87.0	39.9
25/692	R00Y_100_050a	1.0	0.5	0.5	0.0	0.0	0.0	0.0	0.0	0.0	0.0	55.8	87.0	39.9
26/688	R00Y_100_050a	1.0	0.5	0.5	0.0	0.0	0.0	0.0	0.0	0.0	0.0	55.8	87.0	39.9
27/506	R00Y_075_050a	0.75	0.25	0.75	0.5	0.5	0.5	0.5	0.5	0.5	0.5	55.8	87.0	39.9
28/524	R50Y_075_050a	0.75	0.5	0.5	0.5	0.5	0.5	0.5	0.5	0.5	0.5	55.8	87.0	39.9
29/542	Y00C_075_050a	0.75	0.75	0.25	0.75	0.5	0.5	0.5	0.5	0.5	0.5	55.8	87.0	39.9
30/380	Y50C_075_050a	0.25	0.75	0.25	0.75	0.5	0.5	0.5	0.5	0.5	0.5	55.8	87.0	39.9
31/218	G00B_075_050a	0.25	0.75	0.25	0.75	0.5	0.5	0.5	0.5	0.5	0.5	55.8	87.0	39.9
32/222	G50B_075_050a	0.25	0.75	0.25	0.75	0.5	0.5	0.5	0.5	0.5	0.5	55.8	87.0	39.9
33/186	B00R_075_050a	0.25	0.75	0.25	0.75	0.5	0.5	0.5	0.5	0.5	0.5	55.8	87.0	39.9
34/510	B50R_075_050a	0.25	0.75	0.25	0.75	0.5	0.5	0.5	0.5	0.5	0.5	55.8	87.0	39.9
35/506	R00Y_075_050a	0.75	0.25	0.25	0.75	0.5	0.5	0.5	0.5	0.5	0.5	55.8	87.0	39.9
36/324	R00Y_050_050a	0.5	0.0	0.0	0.5	0.5	0.5	0.5	0.5	0.5	0.5	55.8	87.0	39.9
37/342	R50Y_050_050a	0.5	0.25	0.0	0.5	0.5	0.5	0.5	0.5	0.5	0.5	55.8	87.0	39.9
38/360	Y00C_050_050a	0.5	0.5	0.0	0.5	0.5	0.5	0.5	0.5	0.5	0.5	55.8	87.0	39.9
39/198	Y50C_050_050a	0.25	0.5	0.0	0.5	0.5	0.5	0.5	0.5	0.5	0.5	55.8	87.0	39.9
40/36	G00B_050_050a	0.0	0.5	0.0	0.5	0.5	0.5	0.5	0.5	0.5	0.5	55.8	87.0	39.9
41/40	G50B_050_050a	0.0	0.5	0.0	0.5	0.5	0.5	0.5	0.5	0.5	0.5	55.8	87.0	39.9
42/4	B00R_050_050a	0.0	0.5	0.0	0.5	0.5	0.5	0.5	0.5	0.5	0.5	55.8	87.0	39.9
43/328	B50R_050_050a	0.5	0.0	0.5	0.5	0.5	0.5	0.5	0.5	0.5	0.5	55.8	87.0	39.9
44/324	R00Y_050_050a	0.5	0.0	0.5	0.5	0.5	0.5	0.5	0.5	0.5	0.5	55.8	87.0	39.9
45/0	NW_000a	0.0	0.0	0.0	0.0	0.0	0.0	0.0	0.0	0.0	0.0	55.8	87.0	39.9
46/91	NW_013a	0.125	0.125	0.125	0.125	0.125	0.125	0.125	0.125	0.125	0.125	55.8	87.0	39.9
47/182	NW_025a	0.25	0.25	0.25	0.25	0.25	0.25	0.25	0.25	0.25	0.25	55.8	87.0	39.9
48/274	NW_038a	0.375	0.375	0.375	0.375	0.375	0.375	0.375	0.375	0.375	0.375	55.8	87.0	39.9
49/364	NW_050a	0.5	0.5	0.5	0.5	0.5	0.5	0.5	0.5	0.5	0.5	55.8	87.0	39.9
50/455	NW_065a	0.625	0.625	0.625	0.625	0.625	0.625	0.625	0.625	0.625	0.625	55.8	87.0	39.9
51/546	NW_080a	0.75	0.75	0.75	0.75	0.75	0.75	0.75	0.75	0.75	0.75	55.8	87.0	39.9
52/638	NW_088a	0.875	0.875	0.875	0.875	0.875	0.875	0.875	0.875	0.875	0.875	55.8	87.0	39.9
53/728	NW_100a	1.0	1.0	1.0	1.0	1.0	1.0	1.0	1.0	1.0	1.0	55.8	87.0	39.9

delta E* = 4.0



entrée : rgb/cmyk -> rgbd sortie : transférer à cmykd

graphique TUB-PF39; reproduction en couleurs couleurs et différences, ΔE*, 3D=0, de=0, cmyk

PF390-7N, 8/22-F

3-003730-F0

Table with 80 columns (numbered 1-80) and 80 rows (numbered 1-80). Each cell contains a 4x4 grid of numerical values representing color calibration data for various printer models and color channels.

http://130.149.60.45/~farbmetrik/PF39/PF39LONP.PDF /PS; sortie de transfert N: aucune linearisation 3D (OL) dans fichier (F) ou PS-startup (S), page 9/22

entrée : rgb/cmyk -> rgbd sortie : transférer à cmykd

http://130.149.60.45/~farbmetrik/PF39/PF39LONP.PDF /PS; sortie de transfert N: aucune linearisation 3D (OL) dans fichier (F) ou PS-startup (S), page 10/22

Table with 16 columns: n, HHC*Fd, Rgb*Fd, iet*Fd, Hs*Fd, Rgb*Fd, LabCH*Fd, LabCH*Fd, Rgb*Fd, Rgb*Fd, DF*Fd, Hs*Fd, LabCH*Fd, LabCH*Fd, Rgb*Fd, Rgb*Fd. Rows 81-161.

entrée : rgb/cmyk -> rgbd sortie : transférer à cmykd

graphique TUB-PF39; reproduction en couleurs couleurs et différences, ΔE*3D=0, de=0, cmyk

Table with 24 columns (n, HHC*Fd, rpb*Fd, icr*Fd, hsa*Fd, rpb*Fd, LabC*Fd, LabCh*Fd, DF*Fd, hsa*Fd, rpb*Fd, LabCh*Fd, LabC*Fd, rpb*Fd, rpb*Fd, LabCh*Fd, LabC*Fd, DF*Fd, hsa*Fd, rpb*Fd, LabCh*Fd, LabC*Fd, rpb*Fd, rpb*Fd) and 24 rows of numerical data.

http://130.149.60.45/~farbmetrik/PF39/PF39LONP.PDF /PS; sortie de transfert N: aucune linearisation 3D (OL) dans fichier (F) ou PS-startup (S), page 11/22

entrée : rgb/cmyk -> rgbd sortie : transférer à cmykd

graphique TUB-PF39; reproduction en couleurs couleurs et différences, ΔE*, 3D=0, de=0, cmyk

http://130.149.60.45/~farbmetrik/PF39/PF39LONP.PDF /.PS; sortie de transfert N: aucune linearisation 3D (OL) dans fichier (F) ou PS-startup (S), page 13/22

Table with 12 columns (n, HHC*, RGB*, ICR, HSB, RGB*, LabCH*, DF*, HAm, LabCH*, RGB*, LabCH*) and 404 rows of data.

graphique TUB-PF39; reproduction en couleurs couleurs et différences, ΔE*, 3D=0, de=0, cmyk

entrée : rgb/cmyk -> rgbd sortie : transférer à cmykd

delta E* = 6.6

http://130.149.60.45/~farbmetrik/PF39/PF39LONP.PDF /PS; sortie de transfert N: aucune linearisation 3D (OL) dans fichier (F) ou PS-startup (S), page 15/22

http://130.149.60.45/~farbmetrik/PF39/PF39LONP.PDF /PS; sortie de transfert N: aucune linearisation 3D (OL) dans fichier (F) ou PS-startup (S), page 15/22

entrée : rgb/cmyk -> rgbd sortie : transférer à cmykd

Table with 60 columns and 566 rows. Columns include n, HHC*Fd, rpb*Fd, iet*Fd, ihs*Fd, rpb*Fd, LabC*Fd, LabCH*Fd, ihs*Fd, rpb*Fd, LabC*Fd, LabCH*Fd, DF*Fd, HsAMd, rpb*Fd, LabCH*Fd, DF*Fd, HsAMd, rpb*Fd, LabCH*Fd, and LabC*Fd. Rows list various color patches and their corresponding values.

PF390-7N, 15.22-F

3-0031430-F0

graphique TUB-PF39; reproduction en couleurs couleurs et différences, ΔE*, 3D=0, de=0, cmyk

entrée : rgb/cmyk -> rgbd sortie : transférer à cmykd

http://130.149.60.45/~farbmetrik/PF39/PF39LONP.PDF /.PS; sortie de transfert N: aucune linearisation 3D (OL) dans fichier (F) ou PS-startup (S), page 16/22

Table with 15 columns: n, HHC*Fd, rpb*Fd, icr*Fd, hsa*Fd, rpb*Fd, LabCH*Fd, LabCH*Fd, rpb*Fd, rpb*Fd, DF*Fd, hsa*Fd, rpb*Fd, LabCH*Fd, LabCH*Fd. Rows contain numerical data for various color patches.

graphique TUB-PF39; reproduction en couleurs couleurs et différences, ΔE*, 3D=0, de=0, cmyk

entrée : rgb/cmyk -> rgbd sortie : transférer à cmykd

delta E* = 3.9

Table with 15 columns: n, HHC*Fd, rpb*Fd, icr*Fd, hsa*Fd, LabCH*Fd, rpb*Fd, LabCH*Fd, DF*Fd, hsa*Fd, rpb*Fd, LabCH*Fd, LabCH*Fd, rpb*Fd, LabCH*Fd. Rows include color codes like R00Y, R00M, R00C, etc.

http://130.149.60.45/~farbmetrik/PF39/PF39LONP.PDF /.PS; sortie de transfert N: aucune linearisation 3D (OL) dans fichier (F) ou PS-startup (S), page 17/22

entrée : rgb/cmyk -> rgba sortie : transférer à cmykd

Table with 10 columns: n, H/C/Fd, r/g/b/Fd, i/c/y/Fd, i/c/y/Fd, Lab/C/H/Fd, Lab/C/H/Fd, r/g/b/Fd, r/g/b/Fd, Lab/C/H/Fd, DF*/Fd, Ha/Md, r/g/b*/Md, Lab/C/H*/Md, 0.0, 0.0, 0.0, 0.0. Rows include color names like NV_100a, G50B_100.025a, etc.

entrée : r/gb/cmyk -> r/gb sortie : transférer à cmykd

graphique TUB-PF39; reproduction en couleurs couleurs et différences, ΔE*, 3D=0, de=0, cmyk

PF390-7N, 18.22-F

3-0031730-F0

http://130.149.60.45/~farbmetrik/PF39/PF39LONP.PDF /.PS; sortie de transfert N: aucune linearisation 3D (OL) dans fichier (F) ou PS-startup (S), page 19/22

Table with columns: n, HHC*Fd, rpb*Fd, icr*Fd, hsa*Fd, rpb*Fd, LabCH*Fd, LabCH*Pd, rpb*Pd, LabCH*Pd, DF*Pd, hsa*Pd, rpb*Pd, LabCH*Pd, LabCH*Yd, and numerical values for each row.

delta E*90 = 6.2

graphique TUB-PF39; reproduction en couleurs couleurs et différences, ΔE*, 3D=0, de=0, cmyk

entrée : rgb/cmyk -> rgbd sortie : transférer à cmykd

PF390-19, 19/22-F

3-0031830-F0

Table with 15 columns: n, H#C*Fd, rpb*Fd, iet*Fd, hsa*Fd, rpb*Fd, LabC*F*Fd, LabC*F*Fd, rpb*Fd, rpb*Fd, hsa*Fd, LabC*F*Fd, LabC*F*Fd, rpb*Fd, LabC*F*Fd. Rows include color patches like NNW_000a, NNW_012a, NNW_025a, etc.

http://130.149.60.45/~farbmetrik/PF39/PF39L0NP.PDF /.PS; sortie de transfert N: aucune linearisation 3D (OL) dans fichier (F) ou PS-startup (S), page 21/22

entrée : rgb/cmyk -> rgbd sortie : transférer à cmykd

graphique TUB-PF39; reproduction en couleurs couleurs et différences, ΔE*, 3D=0, de=0, cmyk

PF390-71N, 21-22-F

3-0032030-F0

http://130.149.60.45/~farbmetrik/PF39/PF39L0NP.PDF /.PS; sortie de transfert
 N: aucune linearisation 3D (OL) dans fichier (F) ou PS-startup (S), page 22/22

n	HC*Fd	rgb_Fd	icr_Fd	hsa_Fd	rgb*Fd	LabCH*Fd	hsa_Fd	rgb*Fd	LabCH*Fd	DF*Fd	hsa_Md	rgb*Md	LabCH*Md	
1053	NW_0866d	0.866	0.866	0.866	0.866	84.9	0.866	0.866	89.2	0.2	199.7	4.3	360	
1054	NW_0933d	0.933	0.933	0.933	0.933	90.1	0.933	0.933	92.0	0.1	181.7	1.9	360	
1055	NW_1000d	1.0	1.0	1.0	1.0	95.3	1.0	1.0	95.3	0.0	115.3	0.0	360	
1056	NW_0066d	0.066	0.066	0.066	0.066	17.8	0.066	0.066	18.8	0.1	82.2	1.0	360	
1057	NW_0133d	0.133	0.133	0.133	0.133	22.9	0.133	0.133	22.4	0.0	158.0	0.5	360	
1058	NW_0200d	0.2	0.2	0.2	0.2	33.3	0.2	0.2	32.4	-0.5	226.4	2.4	360	
1059	NW_0266d	0.266	0.266	0.266	0.266	38.4	0.266	0.266	38.9	-0.8	226.6	5.7	360	
1060	NW_0333d	0.333	0.333	0.333	0.333	43.6	0.333	0.333	45.5	-0.8	223.4	7.2	360	
1061	NW_0400d	0.4	0.4	0.4	0.4	48.8	0.4	0.4	51.8	-0.7	220.3	8.5	360	
1062	NW_0466d	0.466	0.466	0.466	0.466	53.9	0.466	0.466	57.2	-0.7	219.8	7.8	360	
1063	NW_0533d	0.533	0.533	0.533	0.533	59.1	0.533	0.533	61.6	-0.6	220.1	7.8	360	
1064	NW_0600d	0.6	0.6	0.6	0.6	64.3	0.6	0.6	66.8	-0.6	217.4	7.7	360	
1065	NW_0666d	0.666	0.666	0.666	0.666	69.4	0.666	0.666	71.9	-0.5	218.0	6.0	360	
1066	NW_0734d	0.734	0.734	0.734	0.734	74.6	0.734	0.734	80.7	-0.4	208.6	4.8	360	
1067	NW_0800d	0.8	0.8	0.8	0.8	79.8	0.8	0.8	84.6	-0.3	209.9	4.2	360	
1068	NW_0866d	0.866	0.866	0.866	0.866	84.9	0.866	0.866	89.1	-0.2	141.9	2.0	360	
1069	NW_0933d	0.933	0.933	0.933	0.933	90.1	0.933	0.933	92.1	0.0	104.4	0.0	360	
1070	NW_1000d	1.0	1.0	1.0	1.0	95.3	1.0	1.0	95.3	0.0	61.6	2.4	360	
1071	NW_0066d	0.066	0.066	0.066	0.066	17.8	0.066	0.066	18.8	0.1	260.6	0.1	360	
1072	NW_0133d	0.133	0.133	0.133	0.133	22.9	0.133	0.133	22.4	0.0	39.4	3.0	389	
1073	NW_0200d	0.2	0.2	0.2	0.2	33.3	0.2	0.2	32.4	-0.1	227.4	3.4	210	
1074	NW_0266d	0.266	0.266	0.266	0.266	38.4	0.266	0.266	38.9	0.0	1.2	89	1.0	360
1075	NW_0333d	0.333	0.333	0.333	0.333	43.6	0.333	0.333	45.5	0.0	278.7	3.8	270	
1076	NW_0400d	0.4	0.4	0.4	0.4	48.8	0.4	0.4	51.8	-0.2	196.6	2.4	450	
1077	NW_0466d	0.466	0.466	0.466	0.466	53.9	0.466	0.466	57.2	0.0	11.4	72.4	330	
1078	NW_0533d	0.533	0.533	0.533	0.533	59.1	0.533	0.533	61.6	0.0	70.9	14.5	472	
1079	NW_0600d	0.6	0.6	0.6	0.6	64.3	0.6	0.6	66.8	0.0	53.4	0.0	560	

delta E* = 4.2

entrée : rgb/cmyk -> rgbd
 sortie : transférer à cmykd

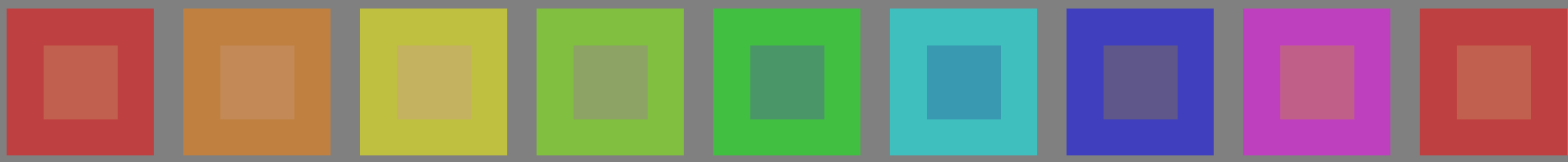
graphique TUB-PF39; reproduction en couleurs
 couleurs et différences, ΔE^* ; 3D=0, de=0, cmyk

test no 3 pour un rendu de couleurs – couleurs métamères pour A et P4000; impression laser (CMYK)

voir fichiers similaires: <http://130.149.60.45/~farbmetrik/PF39/PF39.HTM>
informations techniques: <http://www.ps.bam.de> ou <http://130.149.60.45/~farbmetrik>

TUB enregistrement: 20130201 -PF39/PF39L0NP.PDF /.PS
application pour la mesure des sorties sur imprimante laser

TUB matériel: code=rh4ta



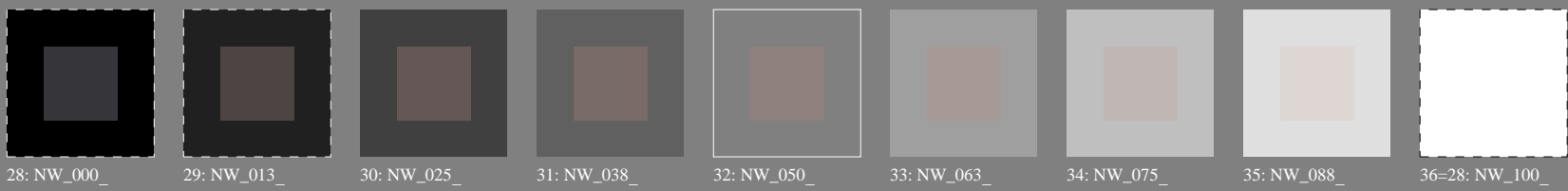
series :
métamère
m
A



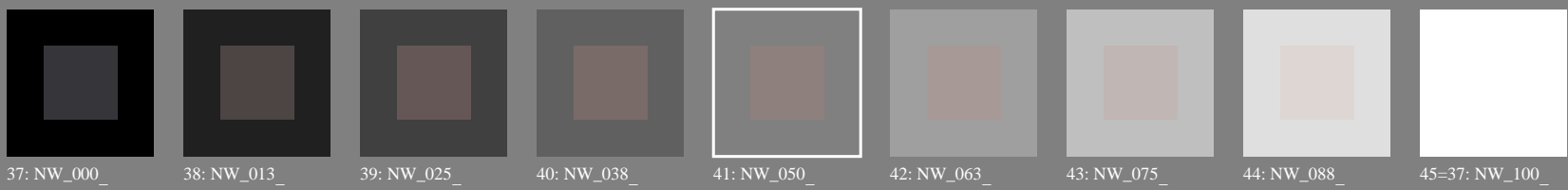
central
z
A/P4000



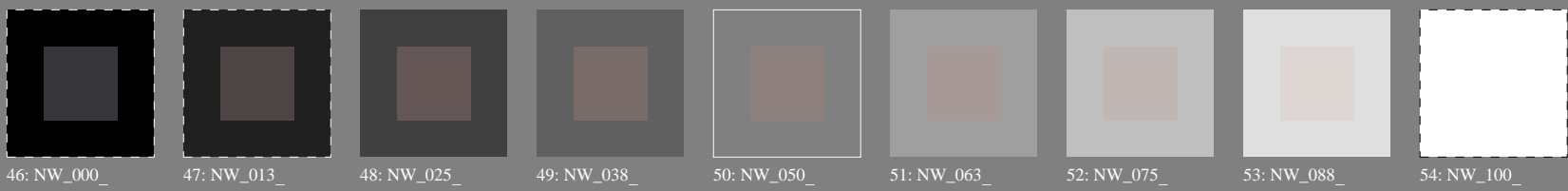
métamère
m
P4000



métamère
m
A



gris
g
A/P4000

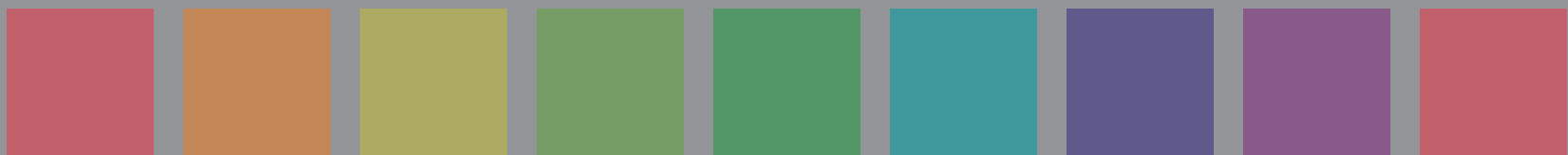


métamère
m
P4000

test no 3 pour un rendu de couleurs – couleurs métamères pour A et P4000; impression laser (CMYK); rgb->rgbe

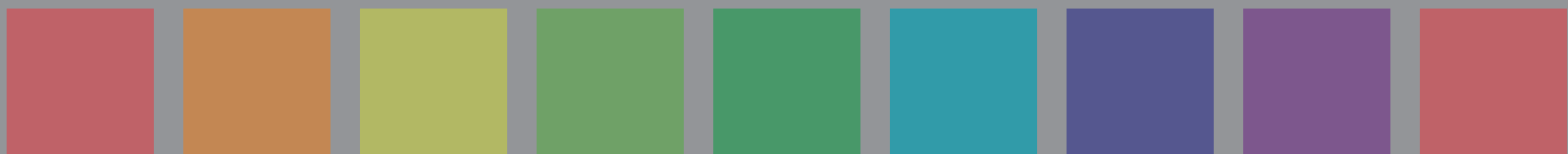
voir fichiers similaires: <http://130.149.60.45/~farbmetrik/PF39/PF39.HTM>
informations techniques: <http://www.ps.bam.de> ou <http://130.149.60.45/~farbmetrik>

TUB enregistrement: 20130201 -PF39/PF39L0NP.PDF /.PS TUB matériel: code=rh4ta
application pour la mesure des sorties sur imprimante laser, séparation cmykn6 (CMYK)



series :
métamère
m
A

01: R00Y_075_050_e 02: R50Y_075_050_e 03: Y00G_075_050_e 04: Y50G_075_050_e 05: G00B_075_050_e 06: G50B_075_050_e 07: B00R_075_050_e 08: B50R_075_050_e 09=10: R00Y_075_050_e



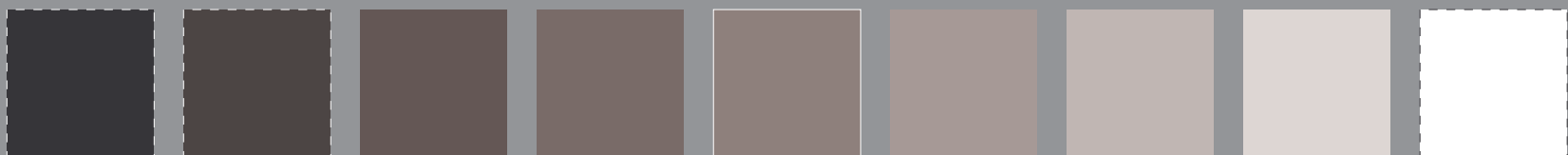
central
z
A/P4000

10: R00Y_075_050_e 11: R50Y_075_050_e 12: Y00G_075_050_e 13: Y50G_075_050_e 14: G00B_075_050_e 15: G50B_075_050_e 16: B00R_075_050_e 17: B50R_075_050_e 18=01: R00Y_075_050_e



métamère
m
P4000

19: R00Y_075_050_e 20: R50Y_075_050_e 21: Y00G_075_050_e 22: Y50G_075_050_e 23: G00B_075_050_e 24: G50B_075_050_e 25: B00R_075_050_e 26: B50R_075_050_e 27=19: R00Y_075_050_e



métamère
m
A

Lab*N0=17.8, 1.3, 0.7
Lab*W0=95.3, 0.3, -4.9
Lab*N1=23.1, -3.5, -9.1
Lab*W1=95.4, 0.3, -5.0

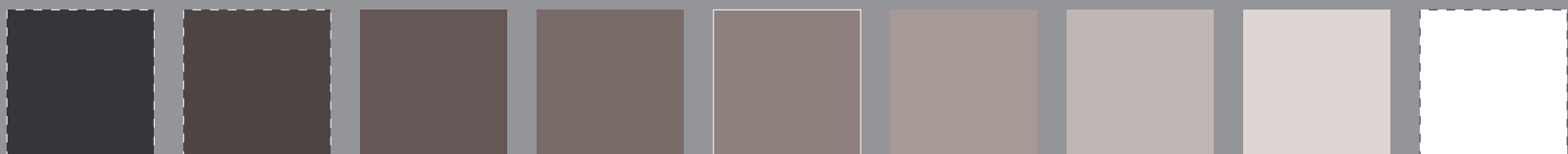
28: NW_000_e 29: NW_013_e 30: NW_025_e 31: NW_038_e 32: NW_050_e 33: NW_063_e 34: NW_075_e 35: NW_088_e 36=28: NW_100_e



gris
g
A/P4000

Lab*N0=17.8, 1.3, 0.7
Lab*W0=95.3, 0.3, -4.9
Lab*N1=17.7, 1.0, 0.7
Lab*W1=95.3, 0.6, -5.0

37: NW_000_e 38: NW_013_e 39: NW_025_e 40: NW_038_e 41: NW_050_e 42: NW_063_e 43: NW_075_e 44: NW_088_e 45=37: NW_100_e



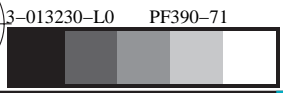
métamère
m
P4000

Lab*N1=17.7, 1.0, 0.7
Lab*W1=95.3, 0.6, -5.0
Lab*N=23.7, -5.0, -8.0
Lab*W=95.5, 0.6, -5.1

46: NW_000_e 47: NW_013_e 48: NW_025_e 49: NW_038_e 50: NW_050_e 51: NW_063_e 52: NW_075_e 53: NW_088_e 54: NW_100_e

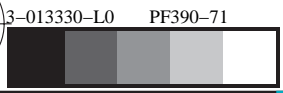
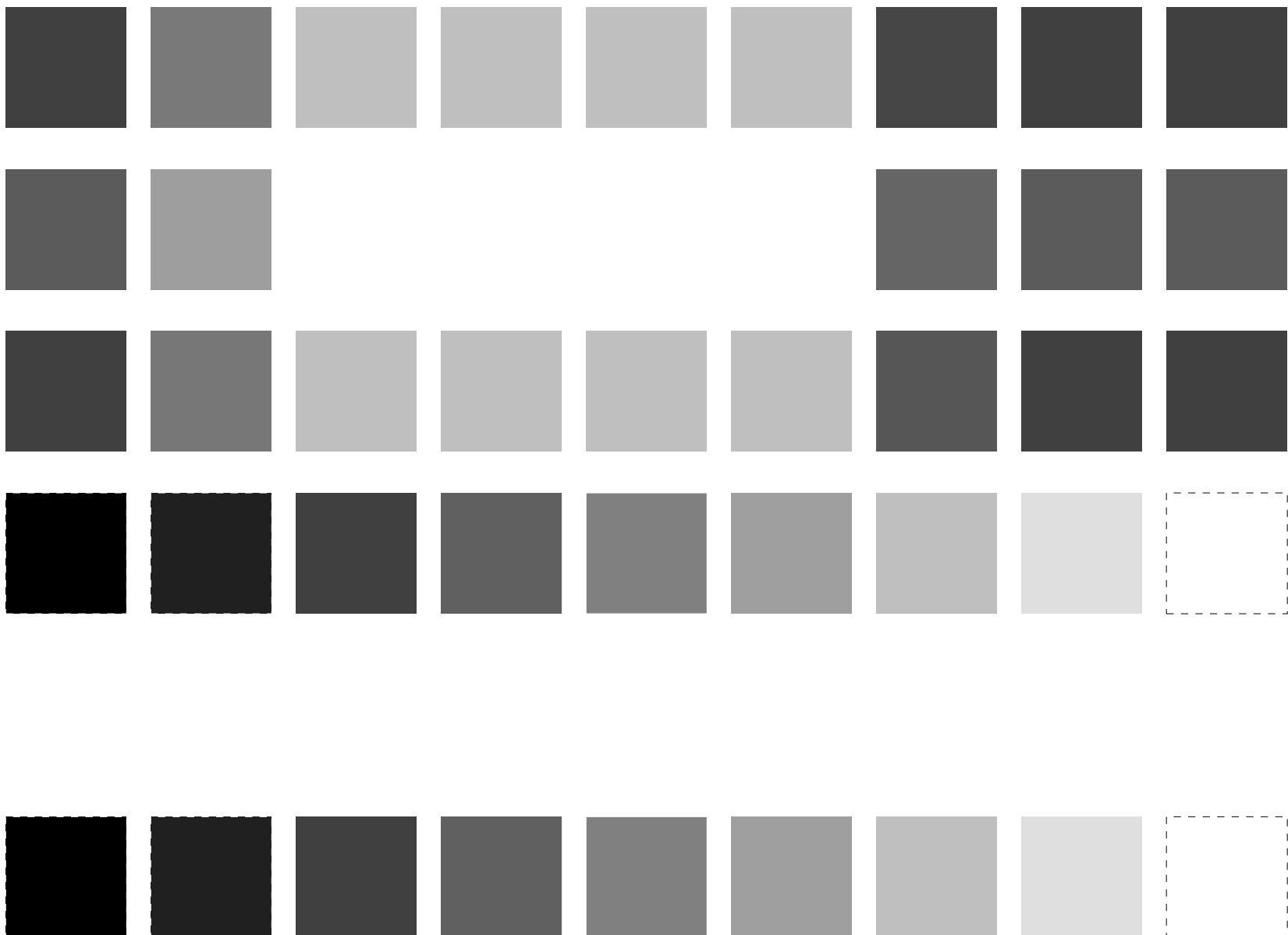
voir fichiers similaires: <http://130.149.60.45/~farbmetrik/PF39/PF39.HTM>
informations techniques: <http://www.ps.bam.de> ou <http://130.149.60.45/~farbmetrik>

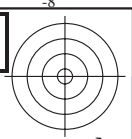
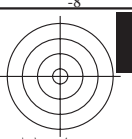
TUB enregistrement: 20130201-PF39/PF39L0NP.PDF /.PS TUB matériel: code=rh4ta
application pour la mesure des sorties sur imprimante laser, séparation cmykn6 (CMYK)



voir fichiers similaires: <http://130.149.60.45/~farbmetrik/PF39/PF39.HTM>
informations techniques: <http://www.ps.bam.de> ou <http://130.149.60.45/~farbmetrik>

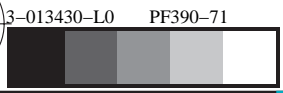
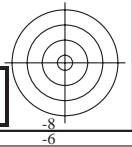
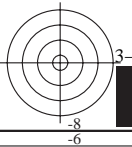
TUB enregistrement: 20130201-PF39/PF39L0NP.PDF /.PS TUB matériel: code=rh4ta
application pour la mesure des sorties sur imprimante laser, séparation cmykn6 (CMYK)



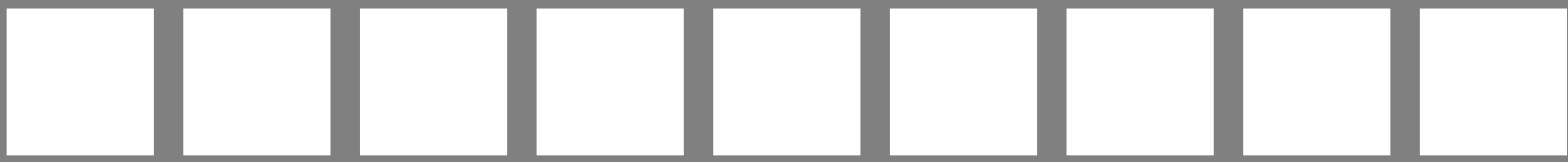


voir fichiers similaires: <http://130.149.60.45/~farbmetrik/PF39/PF39.HTM>
informations techniques: <http://www.ps.bam.de> ou <http://130.149.60.45/~farbmetrik>

TUB enregistrement: 20130201-PF39/PF39L0NP.PDF /.PS TUB matériel: code=rh4ta
application pour la mesure des sorties sur imprimante laser, séparation cmykn6 (CMYK)



test no 3 pour un rendu de couleurs – couleurs métamères pour A et P4000; impression laser (CMYK); rgb->rgbe



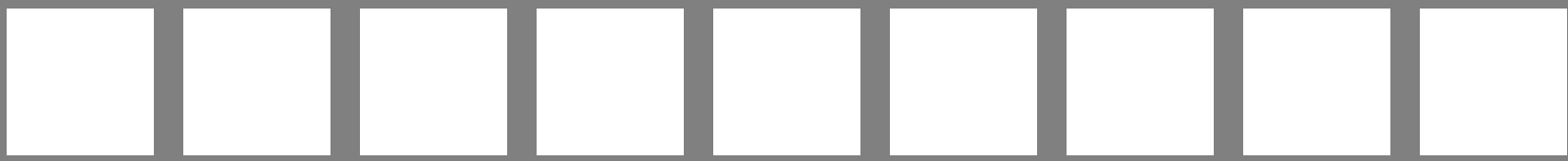
01: R00Y_075_050_e 02: R50Y_075_050_e 03: Y00G_075_050_e 04: Y50G_075_050_e 05: G00B_075_050_e 06: G50B_075_050_e 07: B00R_075_050_e 08: B50R_075_050_e 09=10: R00Y_075_050_e

series :
m
A



10: R00Y_075_050_e 11: R50Y_075_050_e 12: Y00G_075_050_e 13: Y50G_075_050_e 14: G00B_075_050_e 15: G50B_075_050_e 16: B00R_075_050_e 17: B50R_075_050_e 18=01: R00Y_075_050_e

central
z
A/P4000



19: R00Y_075_050_e 20: R50Y_075_050_e 21: Y00G_075_050_e 22: Y50G_075_050_e 23: G00B_075_050_e 24: G50B_075_050_e 25: B00R_075_050_e 26: B50R_075_050_e 27=19: R00Y_075_050_e

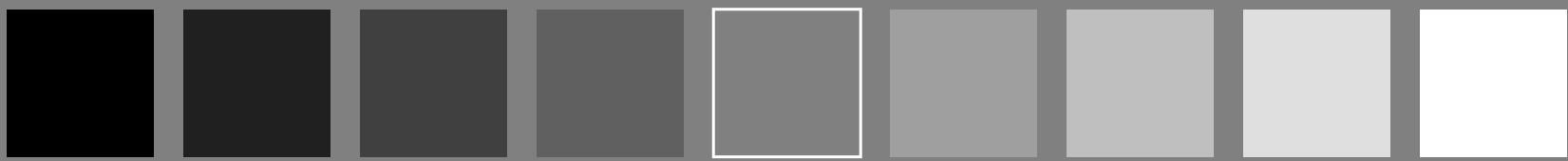
métamère
m
P4000



28: NW_000_e 29: NW_013_e 30: NW_025_e 31: NW_038_e 32: NW_050_e 33: NW_063_e 34: NW_075_e 35: NW_088_e 36=28: NW_100_e

métamère
m
A

Lab*N0=17.8, 1.3, 0.7
Lab*W0=95.3, 0.3, -4.9
Lab*N1=23.1, -3.5, -9.1
Lab*W1=95.4, 0.3, -5.0



37: NW_000_e 38: NW_013_e 39: NW_025_e 40: NW_038_e 41: NW_050_e 42: NW_063_e 43: NW_075_e 44: NW_088_e 45=37: NW_100_e

gris
g
A/P4000

Lab*N0=17.8, 1.3, 0.7
Lab*W0=95.3, 0.3, -4.9
Lab*N1=17.7, 1.0, 0.7
Lab*W1=95.3, 0.6, -5.0



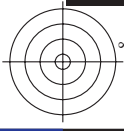
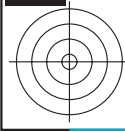
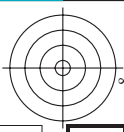
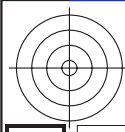
46: NW_000_e 47: NW_013_e 48: NW_025_e 49: NW_038_e 50: NW_050_e 51: NW_063_e 52: NW_075_e 53: NW_088_e 54: NW_100_e

métamère
m
P4000

Lab*N1=17.7, 1.0, 0.7
Lab*W1=95.3, 0.6, -5.0
Lab*N=23.7, -5.0, -8.0
Lab*W=95.5, 0.6, -5.1

voir fichiers similaires: <http://130.149.60.45/~farbmetrik/PF39/PF39.HTM>
informations techniques: <http://www.ps.bam.de> ou <http://130.149.60.45/~farbmetrik>

TUB enregistrement: 20130201 -PF39/PF39L0NP.PDF /.PS TUB matériel: code=rh4ta
application pour la mesure des sorties sur imprimante laser, séparation cmykn6 (CMYK)



http://130.149.60.45/~farbmetrik/PF39/PF39L0NP.PDF /.PS; sortie de transfert N: aucune linearisation 3D (OL) dans fichier (F) ou PS-startup (S), page 7/22

Table with columns: nif, HHC*Fe, rpb*Fe, icr*Fe, hsa*Fe, LabC*Fe, LabM*Fe, LabY*Fe, rpb*Fe, LabC*Fe, LabM*Fe, LabY*Fe, DF*Fe, hsa*Fe, rpb*Fe, LabC*Fe, LabM*Fe, LabY*Fe. Rows list various color patches and their corresponding colorimetric data.

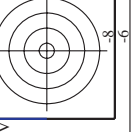
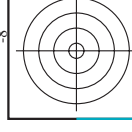
delta E** = 18.6

graphique TUB-PF39; reproduction en couleurs couleurs et différences, ΔE*, 3D=0, de=L, cmyk

entrée : rgb/cmyk -> rgbe sortie : transférer à cmyke



Table with 35 columns and 100 rows containing numerical data for color calibration, including labels like 'Hf', 'HC*Fe', 'rgb*Fe', 'iL*Fe', 'hs_L*Fe', 'LabCH*Fe', 'rgb*Fe', 'LabCH*Fe', 'DF*Fe', 'HsM*Fe', 'rgb*Fe', 'LabCH*Fe', 'DF*Fe', 'HsM*Fe', 'delta E* = 13,2'.



http://130.149.60.45/~farbmetrik/PF39/PF39LONP.PDF /PS; sortie de transfert N: aucune linearisation 3D (OL) dans fichier (F) ou PS-startup (S), page 9/22

Table with 80 columns (numbered 1-80) and 80 rows (numbered 1-80). Each cell contains a 4x4 grid of numerical values representing color calibration data for various color patches.

delta E* = 7.4

entrée : rgb/cmyk -> rgbe sortie : transférer à cmyke

graphique TUB-PF39; reproduction en couleurs couleurs et différences, ΔE*, 3D=0, de=L, cmyk

PF390-7N, 9-22-F

3-013830-F0

Table with 16 columns: n, HHC*Fe, rpb*Fe, icr*Fe, hsa*Fe, rpb*Fe, LabCH*Fe, LabCH*Fe, rpb*Fe, rpb*Fe, LabCH*Fe, DF*Fe, hsa*Fe, rpb*Fe, LabCH*Fe, rpb*Fe, LabCH*Fe. Rows 81-161.

entrée : rgb/cmyk -> rgbe sortie : transférer à cmyke

graphique TUB-PF39; reproduction en couleurs couleurs et différences, ΔE*3D=0, de=L, cmyk

3-013930-10

PF390-7N, 10-22-F

http://130.149.60.45/~farbmetrik/PF39/PF39LONP.PDF /.PS; sortie de transfert N: aucune linearisation 3D (OL) dans fichier (F) ou PS-startup (S), page 11/22

Table with 24 columns: n, HHC*Fe, rpb*Fe, iet*Fe, Hs*Fe, rpb*Fe, LabCH*Fe, LabCH*Fe, rpb*Fe, rpb*Fe, DF*Fe, Hs*Fe, LabCH*Fe, LabCH*Fe, rpb*Fe, rpb*Fe, LabCH*Fe, LabCH*Fe, rpb*Fe, rpb*Fe, DF*Fe, Hs*Fe, LabCH*Fe, LabCH*Fe, rpb*Fe, rpb*Fe. Rows 162-242.

delta E* = 10.7

graphique TUB-PF39; reproduction en couleurs couleurs et différences, ΔE*, 3D=0, de=L, cmyk

entrée : rgb/cmyk -> rgbe sortie : transférer à cmyke

http://130.149.60.45/~farbmetrik/PF39/PF39LONP.PDF /PS; sortie de transfert N: aucune linearisation 3D (OL) dans fichier (F) ou PS-startup (S), page 12/22

Table with 32 columns: n, HHC*Fe, rpb*Fe, iet*Fe, Hs*Fe, rpb*Fe, LabCH*Fe, LabCH*Fe, rpb*Fe, rpb*Fe, DF*Fe, Hs*Fe, LabCH*Fe, LabCH*Fe, rpb*Fe, rpb*Fe, LabCH*Fe, LabCH*Fe, rpb*Fe, rpb*Fe, DF*Fe, Hs*Fe, LabCH*Fe, LabCH*Fe, rpb*Fe, rpb*Fe, LabCH*Fe, LabCH*Fe, rpb*Fe, rpb*Fe. Rows 243-323.

3-013130-F0

PF390-7N, 12-22-F

graphique TUB-PF39; reproduction en couleurs couleurs et différences, ΔE*, 3D=0, de=L, cmyk

entrée : rgb/cmyk -> rgbe sortie : transférer à cmyke

delta E** = 14.9

http://130.149.60.45/~farbmetrik/PF39/PF39LONP.PDF /.PS; sortie de transfert N: aucune linearisation 3D (OL) dans fichier (F) ou PS-startup (S), page 13/22

Table with 15 columns: n, HHC*Fe, rpb*Fe, icr*Fe, Hs*Fe, rpb*Fe, LabCH*Fe, LabCH*Fe, rpb*Fe, DF*Fe, rpb*Fe, LabCH*Fe, LabCH*Fe, rpb*Fe, LabCH*Fe. Rows 324-404.

graphique TUB-PF39; reproduction en couleurs couleurs et différences, ΔE*, 3D=0, de=L, cmyk entrée : rgb/cmyk -> rgbe sortie : transférer à cmyke

http://130.149.60.45/~farbmetrik/PF39/PF39LONP.PDF /.PS; sortie de transfert N: aucune linearisation 3D (OL) dans fichier (F) ou PS-startup (S), page 14/22

Table with 15 columns: n, HHC*Fe, Rgb*Fe, iet*Fe, Hsa*Fe, Rgb*Fe, LabCh*Fe, LabCh*Fe, Rgb*Fe, Rgb*Fe, LabCh*Fe, DF*Fe, Hsa*Fe, Rgb*Fe, LabCh*Fe. Rows list various color calibration patches and their corresponding colorimetric values.

entrée : rgb/cmyk -> rgbe sortie : transférer à cmyke

graphique TUB-PF39; reproduction en couleurs couleurs et différences, ΔE*, 3D=0, de=L, cmyk

PF390-742Z-F2

3-0131330-F0

http://130.149.60.45/~farbmetrik/PF39/PF39LONP.PDF /PS; sortie de transfert N: aucune linearisation 3D (OL) dans fichier (F) ou PS-startup (S), page 15/22

Table with 10 columns: n, HHC*Fe, rpb*Fe, icr*Fe, Hs*Fe, rpb*Fe, LabCH*Fe, LabCH*Fe, rpb*Fe, DF*Fe, Hs*Me, rpb*Me, LabCH*Me, LabCH*Me, DF*Me, rpb*Me. Rows contain numerical data for various color patches.

3-0131430-F0 PF390-15/22-F2 delta E* = 16.5

graphique TUB-PF39; reproduction en couleurs couleurs et différences, ΔE*, 3D=0, de=L, cmyk

entrée : rgb/cmyk -> rgbe sortie : transférer à cmyke

Table with 20 columns: n, HHC*Fe, rpb*Fe, icr*Fe, Hs*Fe, rpb*Fe, LabCH*Fe, LabCH*Fe, LabCH*Fe, rpb*Fe, DF*Fe, rpb*Fe, LabCH*Fe, LabCH*Fe, LabCH*Fe, rpb*Fe, LabCH*Fe, LabCH*Fe, LabCH*Fe, rpb*Fe. Rows 567-647.

PF390-16,22-F

graphique TUB-PF39; reproduction en couleurs couleurs et différences, ΔE*, 3D=0, de=L, cmyk

entrée : rgb/cmyk -> rgbe sortie : transférer à cmyke

delta E* = 16,7

http://130.149.60.45/~farbmetrik/PF39/PF39LONP.PDF /.PS; sortie de transfert N: aucune linearisation 3D (OL) dans fichier (F) ou PS-startup (S), page 18/22

Table with 10 columns: n, H/C*, Rg, Rb, Rm, L*a, L*b, L*c, LabCH*, DF*, Hm, Rgb*, LabCH*, DF*, Hm, Rgb*. Rows include color names like NV, G50B, G50M, G50Y, G50C, G50K, ROY, and various colorimetric values.

3-0131730-F0 PF390-7N, 18.22-F2 delta E* = 12.0

graphique TUB-PF39; reproduction en couleurs couleurs et différences, ΔE*, 3D=0, de=L, cmyk

entrée : rgb/cmyk -> rgbe sortie : transférer à cmyke

http://130.149.60.45/~farbmetrik/PF39/PF39LONP.PDF /.PS; sortie de transfert N: aucune linearisation 3D (OL) dans fichier (F) ou PS-startup (S), page 20/22

Table with 10 columns: n, H/C*Fe, r/gb*Fe, i/cr*Fe, Hs/Fa, r/gb*Fe, LabC*H*Fe, LabC*H*Fe, r/gb*Fe, DF*Fe, Ha*Me, LabC*H*Fe, r/gb*Me, LabC*H*Me, r/gb*Me. Rows 891-971.

delta E* = 23.5

graphique TUB-PF39; reproduction en couleurs couleurs et différences, ΔE*, 3D=0, de=L, cmyk

entrée : rgb/cmyk -> rgbe sortie : transférer à cmyke

Table with 15 columns: n, HC*Fe, rpb*Fe, iet*Fe, hsa*Fe, rpb*Fe, LabC*Fe, LabM*Fe, LabY*Fe, LabC*Fe, LabM*Fe, LabY*Fe, rpb*Fe, DF*Fe, hsa*Fe, LabC*Fe, LabM*Fe, LabY*Fe. Rows include color names like NW_000b, NW_012a, etc.

delta E* = 5,4

graphique TUB-PF39; reproduction en couleurs couleurs et différences, ΔE*, 3D=0, de=L, cmyk

entrée : rgb/cmyk -> rgbe sortie : transférer à cmyke

PF390-71N, 21-22-F

3-0132030-F0

http://130.149.60.45/~farbmetrik/PF39/PF39L0NP.PDF /.PS; sortie de transfert
 N: aucune linearisation 3D (OL) dans fichier (F) ou PS-startup (S), page 22/22

n	HC*Fe	rgb*Fe	iet*Fe	hsa*Fe	rgb*Fe	LabCIE*Fe	hsa*Fe	LabCIE*Fe	rgb*Fe	LabCIE*Fe	DF*Fe	hsa*Fe	rgb*Fe	LabCIE*Fe
1053	NW_086e	0.866	0.866	0.866	0.866	0.866	0.866	84.9	0.866	0.866	0.866	0.866	0.866	0.866
1054	NW_093e	0.933	0.933	0.933	0.933	0.933	0.933	90.1	0.933	0.933	0.933	0.933	0.933	0.933
1055	NW_100e	1.0	1.0	1.0	1.0	1.0	1.0	95.3	1.0	1.0	1.0	1.0	1.0	1.0
1056	NW_100e	0.0	0.0	0.0	0.0	0.0	0.0	17.8	0.0	0.0	0.0	0.0	0.0	0.0
1057	NW_100e	0.066	0.066	0.066	0.066	0.066	0.066	22.9	0.066	0.066	0.066	0.066	0.066	0.066
1058	NW_013e	0.133	0.133	0.133	0.133	0.133	0.133	28.1	0.133	0.133	0.133	0.133	0.133	0.133
1059	NW_020e	0.2	0.2	0.2	0.2	0.2	0.2	33.3	0.2	0.2	0.2	0.2	0.2	0.2
1060	NW_026e	0.266	0.266	0.266	0.266	0.266	0.266	38.4	0.266	0.266	0.266	0.266	0.266	0.266
1061	NW_033e	0.333	0.333	0.333	0.333	0.333	0.333	43.6	0.333	0.333	0.333	0.333	0.333	0.333
1062	NW_040e	0.4	0.4	0.4	0.4	0.4	0.4	48.8	0.4	0.4	0.4	0.4	0.4	0.4
1063	NW_046e	0.466	0.466	0.466	0.466	0.466	0.466	53.9	0.466	0.466	0.466	0.466	0.466	0.466
1064	NW_053e	0.533	0.533	0.533	0.533	0.533	0.533	59.1	0.533	0.533	0.533	0.533	0.533	0.533
1065	NW_060e	0.6	0.6	0.6	0.6	0.6	0.6	64.3	0.6	0.6	0.6	0.6	0.6	0.6
1066	NW_066e	0.666	0.666	0.666	0.666	0.666	0.666	69.4	0.666	0.666	0.666	0.666	0.666	0.666
1067	NW_073e	0.734	0.734	0.734	0.734	0.734	0.734	74.6	0.734	0.734	0.734	0.734	0.734	0.734
1068	NW_080e	0.8	0.8	0.8	0.8	0.8	0.8	79.8	0.8	0.8	0.8	0.8	0.8	0.8
1069	NW_086e	0.866	0.866	0.866	0.866	0.866	0.866	84.9	0.866	0.866	0.866	0.866	0.866	0.866
1070	NW_093e	0.933	0.933	0.933	0.933	0.933	0.933	90.1	0.933	0.933	0.933	0.933	0.933	0.933
1071	NW_100e	1.0	1.0	1.0	1.0	1.0	1.0	95.3	1.0	1.0	1.0	1.0	1.0	1.0
1072	NW_100e	0.0	0.0	0.0	0.0	0.0	0.0	17.8	0.0	0.0	0.0	0.0	0.0	0.0
1073	NW_100e	0.066	0.066	0.066	0.066	0.066	0.066	22.9	0.066	0.066	0.066	0.066	0.066	0.066
1074	ROY_100_100e	1.0	1.0	1.0	1.0	1.0	1.0	100.0	1.0	1.0	1.0	1.0	1.0	1.0
1075	GY00_100_100e	0.0	0.0	0.0	0.0	0.0	0.0	17.8	0.0	0.0	0.0	0.0	0.0	0.0
1076	Y000_100_100e	1.0	1.0	1.0	1.0	1.0	1.0	100.0	1.0	1.0	1.0	1.0	1.0	1.0
1077	BY00_100_100e	0.0	0.0	0.0	0.0	0.0	0.0	17.8	0.0	0.0	0.0	0.0	0.0	0.0
1078	BY00_100_100e	0.0	0.0	0.0	0.0	0.0	0.0	17.8	0.0	0.0	0.0	0.0	0.0	0.0
1079	BY00_100_100e	0.0	0.0	0.0	0.0	0.0	0.0	17.8	0.0	0.0	0.0	0.0	0.0	0.0

delta E* = 7.9

entrée : rgb/cmyk -> rgbe
 sortie : transférer à cmyke

graphique TUB-PF39; reproduction en couleurs
 couleurs et différences, ΔE*, 3D=0, de=L, cmyk