

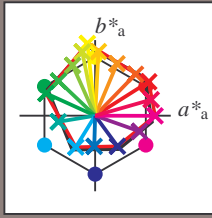
Ein- und Ausgabe: Offset-Reflektiv-System ORS18a

Daten für jede Geräte- (d) oder Elementarfarbe (e):

$HIC^*_d$   
 Bunttext für die Farben dieser Seite:  
 $H^*_d = R00Y_d, R25Y_d, \dots, B75R_d$

**ORS20a; adaptierte CIELAB-Daten**

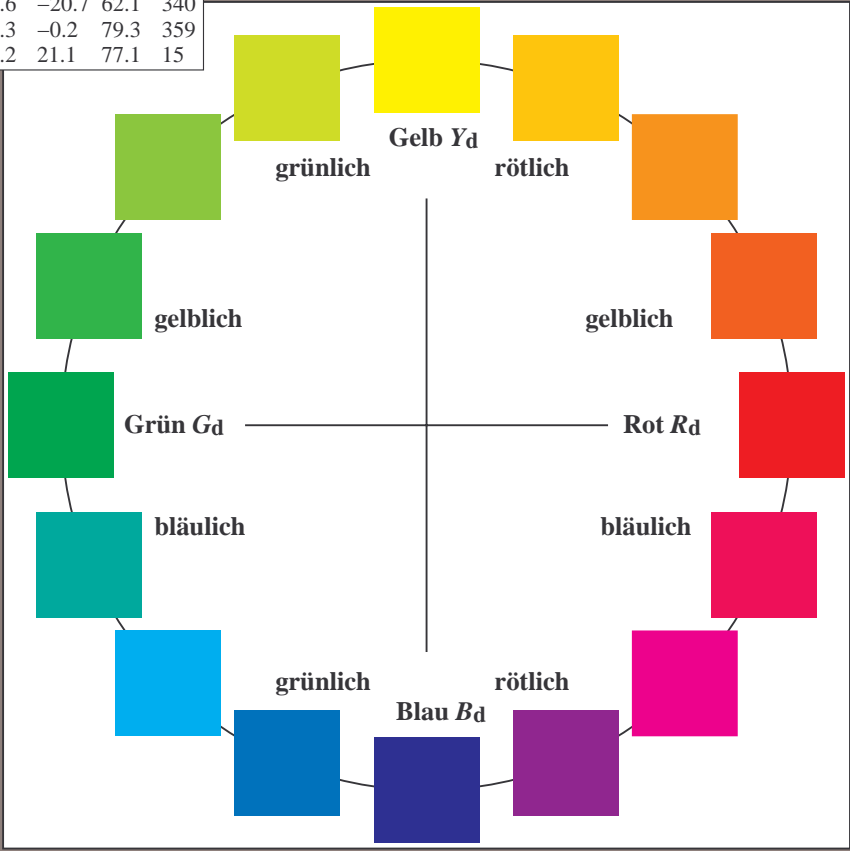
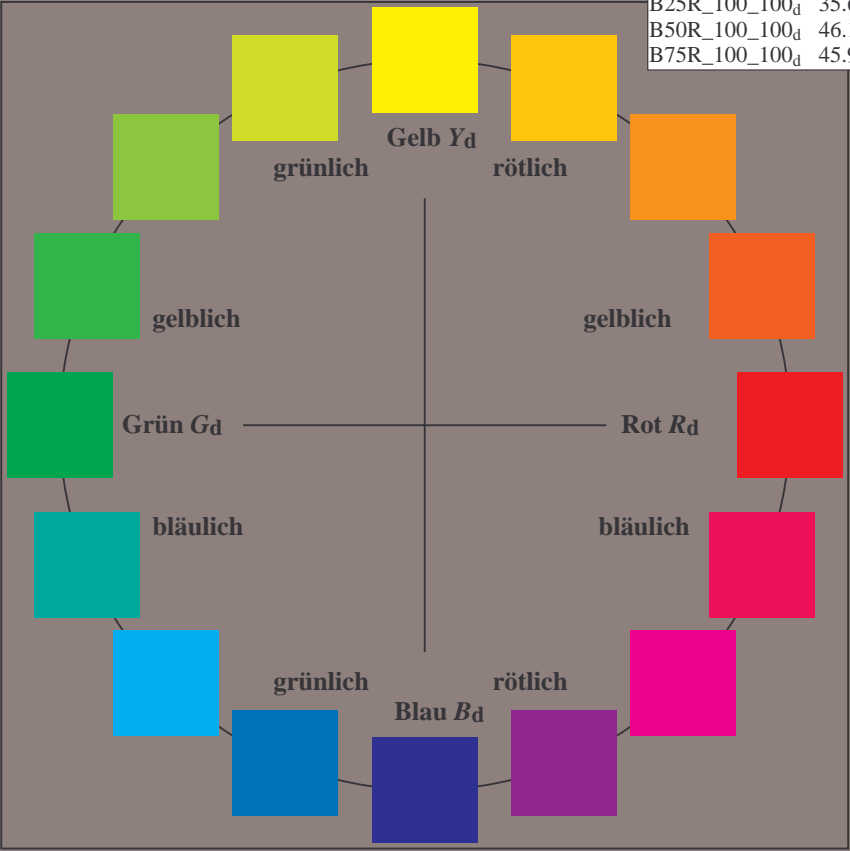
$H^*_d$	$L^*=L^*_a$	$a^*_a$	$b^*_a$	$C^*_{ab,a}$	$h^*_{ab,a}$
R00Y_100_100_d	45.4	70.9	44.8	83.9	32
R25Y_100_100_d	53.0	53.4	54.8	76.5	45
R50Y_100_100_d	64.9	28.9	68.6	74.5	67
R75Y_100_100_d	78.6	4.3	84.7	84.8	87
Y00G_100_100_d	87.8	-10.2	95.4	96.0	96
Y25G_100_100_d	81.2	-17.0	84.3	86.0	101
Y50G_100_100_d	70.6	-29.7	66.5	72.8	114
Y75G_100_100_d	57.9	-48.3	45.8	66.5	136
G00B_100_100_d	50.0	-65.0	29.6	71.4	155
G25B_100_100_d	52.9	-48.6	-8.0	49.3	189
G50B_100_100_d	56.8	-25.5	-41.5	48.7	238
G75B_100_100_d	41.7	-1.2	-40.6	40.6	268
B00R_100_100_d	25.0	29.5	-40.4	50.0	306
B25R_100_100_d	35.6	58.6	-20.7	62.1	340
B50R_100_100_d	46.1	79.3	-0.2	79.3	359
B75R_100_100_d	45.9	74.2	21.1	77.1	15



%Umfang  
 $u^*_{rel} = 92$   
 %Regularität  
 $g^*_{H,rel} = 57$   
 $g^*_{C,rel} = 58$

**ORS20a; adaptierte CIELAB-Daten**

Name	$L^*=L^*_a$	$a^*_a$	$b^*_a$	$C^*_{ab,a}$	$h^*_{ab,a}$
R <sub>d</sub> ,Ma	45.4	70.9	44.8	83.9	32
Y <sub>d</sub> ,Ma	87.8	-10.2	95.4	96.0	96
G <sub>d</sub> ,Ma	50.0	-65.0	29.6	71.4	155
C <sub>d</sub> ,Ma	56.8	-25.5	-41.5	48.7	238
B <sub>d</sub> ,Ma	25.0	29.5	-40.4	50.0	306
M <sub>d</sub> ,Ma	46.1	79.3	-0.2	79.3	359
N <sub>d</sub> ,Ma	24.3	0.0	0.0	0.0	0
W <sub>d</sub> ,Ma	95.6	0.0	0.0	0.0	0
R <sub>d</sub> ,CIE	39.9	58.7	27.9	65.0	25
Y <sub>d</sub> ,CIE	81.2	-2.8	71.5	71.6	92
G <sub>d</sub> ,CIE	52.2	-42.4	13.6	44.5	162
B <sub>d</sub> ,CIE	30.5	1.4	-46.4	46.4	271



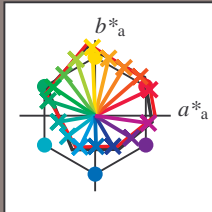
Ein- und Ausgabe: Offset-Reflektiv-System ORS18a

Daten für jede Geräte- (d) oder Elementarfarbe (e):

$HIC^*_e$   
 Bunttext für die Farben dieser Seite:  
 $H^*_e = R00Y_e, R25Y_e, \dots, B75R_e$

**ORS20a; adaptierte CIELAB-Daten**

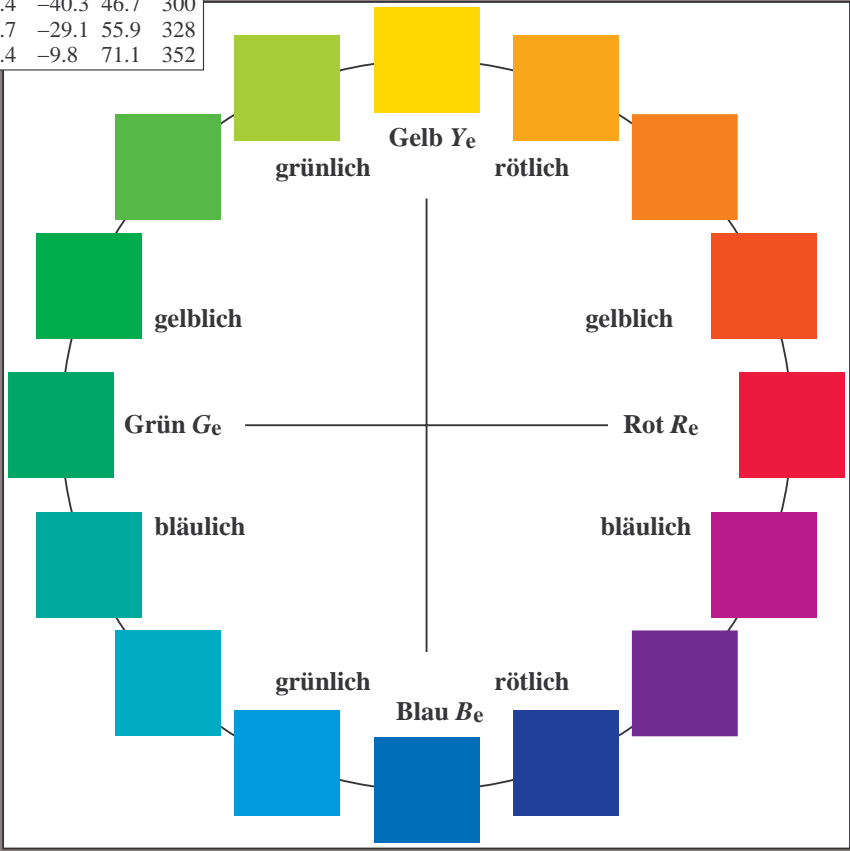
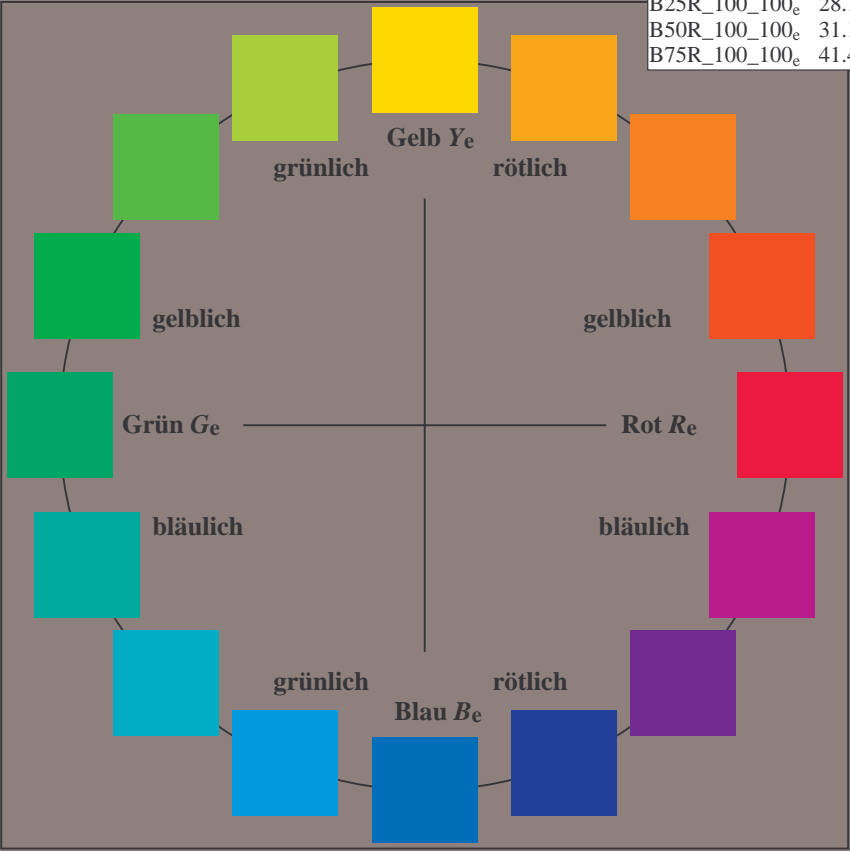
$H^*_e$	$L^*=L^*_a a^*_a$	$b^*_a$	$C^*_{ab,a}$	$h^*_{ab,a}$	
R00Y_100_100_e	45.6	72.2	34.4	80.0	25
R25Y_100_100_e	50.5	59.2	51.6	78.6	41
R50Y_100_100_e	60.2	38.2	63.4	74.1	58
R75Y_100_100_e	70.9	17.9	75.9	77.9	76
Y00G_100_100_e	83.6	-3.6	90.4	90.4	92
Y25G_100_100_e	74.5	-25.0	74.3	78.4	108
Y50G_100_100_e	62.6	-40.9	53.8	67.6	127
Y75G_100_100_e	54.1	-55.5	37.5	67.0	145
G00B_100_100_e	50.6	-62.1	19.9	65.2	162
G25B_100_100_e	53.0	-48.6	-8.2	49.2	189
G50B_100_100_e	55.0	-36.2	-27.2	45.3	216
G75B_100_100_e	53.3	-19.8	-41.3	45.9	244
B00R_100_100_e	40.2	1.2	-40.6	40.6	271
B25R_100_100_e	28.1	23.4	-40.3	46.7	300
B50R_100_100_e	31.1	47.7	-29.1	55.9	328
B75R_100_100_e	41.4	70.4	-9.8	71.1	352



%Umfang  
 $u^*_{rel} = 92$   
 %Regularität  
 $g^*_{H,rel} = 57$   
 $g^*_{C,rel} = 58$

**ORS20a; adaptierte CIELAB-Daten**

Name	$L^*=L^*_a a^*_a$	$b^*_a$	$C^*_{ab,a}$	$h^*_{ab,a}$	
R <sub>e</sub> ,Ma	45.6	72.2	34.4	80.0	25
Y <sub>e</sub> ,Ma	83.6	-3.6	90.4	90.4	92
G <sub>e</sub> ,Ma	50.6	-62.1	19.9	65.2	162
C <sub>e</sub> ,Ma	55.0	-36.2	-27.2	45.3	216
B <sub>e</sub> ,Ma	40.2	1.2	-40.6	40.6	271
M <sub>e</sub> ,Ma	31.1	47.7	-29.1	55.9	328
N <sub>e</sub> ,Ma	24.3	0.0	0.0	0.0	0
W <sub>e</sub> ,Ma	95.6	0.0	0.0	0.0	0
R <sub>e</sub> ,CIE	39.9	58.7	27.9	65.0	25
Y <sub>e</sub> ,CIE	81.2	-2.8	71.5	71.6	92
G <sub>e</sub> ,CIE	52.2	-42.4	13.6	44.5	162
B <sub>e</sub> ,CIE	30.5	1.4	-46.4	46.4	271



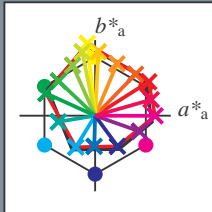
Ein- und Ausgabe: Offset-Reflektiv-System ORS18a

Daten für jede Geräte- (d) oder Elementarfarbe (e):

$HIC^*_d$   
 Bunttext für die Farben dieser Seite:  
 $H^*_d = R00Y_d, R25Y_d, \dots, B75R_d$

**ORS20a; adaptierte CIELAB-Daten**

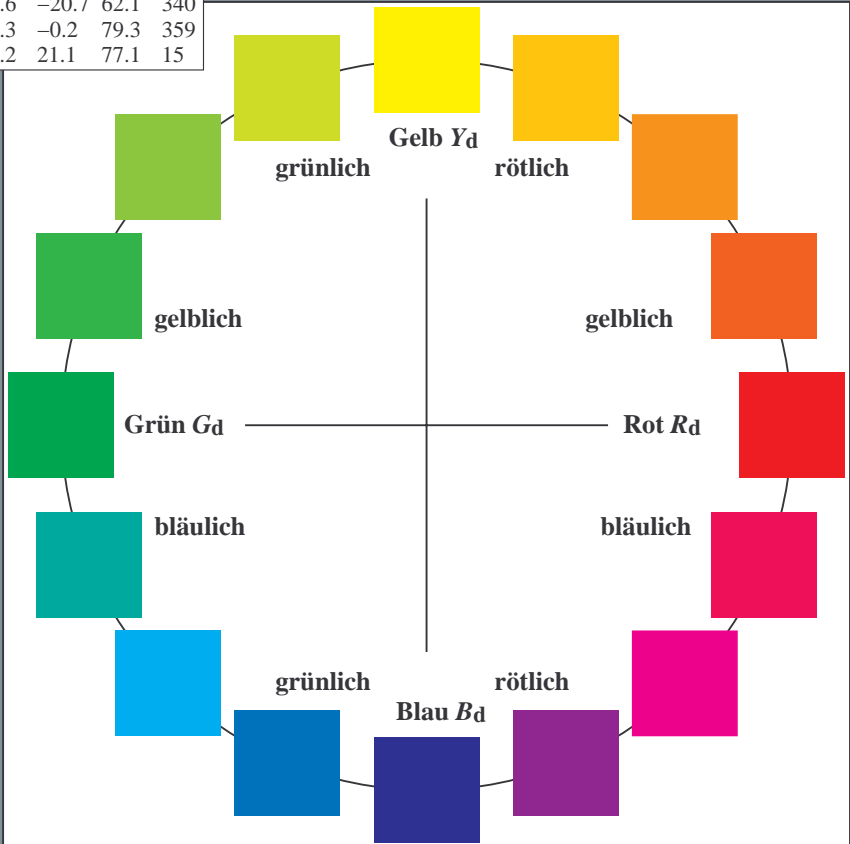
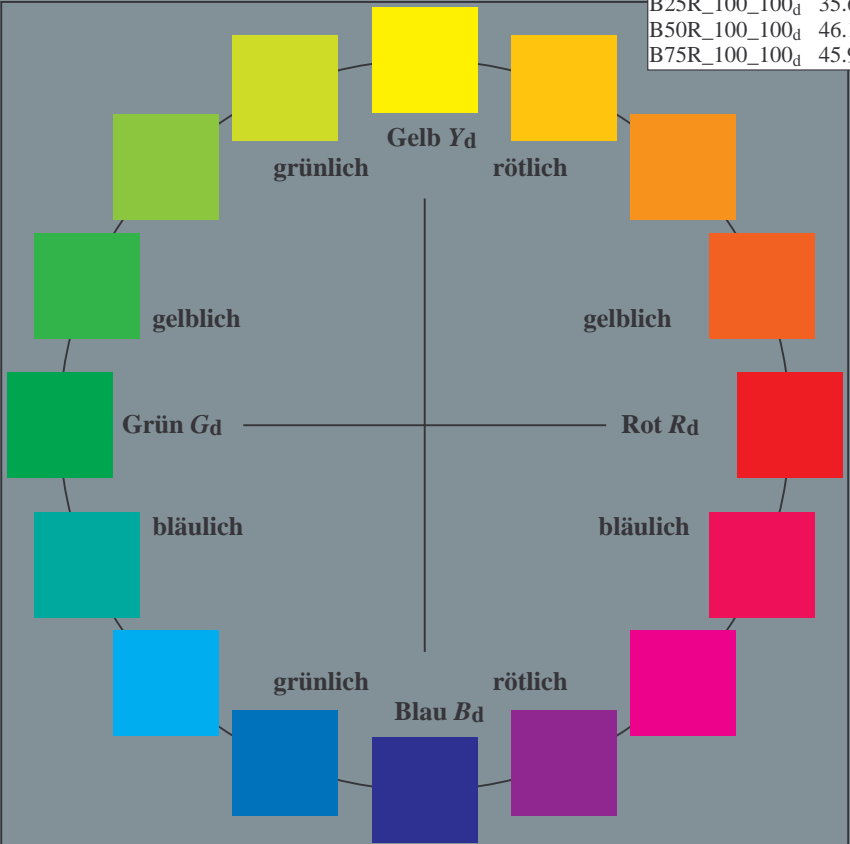
$H^*_d$	$L^*=L^*_a$	$a^*_a$	$b^*_a$	$C^*_{ab,a}$	$h^*_{ab,a}$
R00Y_100_100_d	45.4	70.9	44.8	83.9	32
R25Y_100_100_d	53.0	53.4	54.8	76.5	45
R50Y_100_100_d	64.9	28.9	68.6	74.5	67
R75Y_100_100_d	78.6	4.3	84.7	84.8	87
Y00G_100_100_d	87.8	-10.2	95.4	96.0	96
Y25G_100_100_d	81.2	-17.0	84.3	86.0	101
Y50G_100_100_d	70.6	-29.7	66.5	72.8	114
Y75G_100_100_d	57.9	-48.3	45.8	66.5	136
G00B_100_100_d	50.0	-65.0	29.6	71.4	155
G25B_100_100_d	52.9	-48.6	-8.0	49.3	189
G50B_100_100_d	56.8	-25.5	-41.5	48.7	238
G75B_100_100_d	41.7	-1.2	-40.6	40.6	268
B00R_100_100_d	25.0	29.5	-40.4	50.0	306
B25R_100_100_d	35.6	58.6	-20.7	62.1	340
B50R_100_100_d	46.1	79.3	-0.2	79.3	359
B75R_100_100_d	45.9	74.2	21.1	77.1	15



%Umfang  
 $u^*_{rel} = 92$   
 %Regularität  
 $g^*_{H,rel} = 57$   
 $g^*_{C,rel} = 58$

**ORS20a; adaptierte CIELAB-Daten**

Name	$L^*=L^*_a$	$a^*_a$	$b^*_a$	$C^*_{ab,a}$	$h^*_{ab,a}$
R <sub>d, Ma</sub>	45.4	70.9	44.8	83.9	32
Y <sub>d, Ma</sub>	87.8	-10.2	95.4	96.0	96
G <sub>d, Ma</sub>	50.0	-65.0	29.6	71.4	155
C <sub>d, Ma</sub>	56.8	-25.5	-41.5	48.7	238
B <sub>d, Ma</sub>	25.0	29.5	-40.4	50.0	306
M <sub>d, Ma</sub>	46.1	79.3	-0.2	79.3	359
N <sub>d, Ma</sub>	24.3	0.0	0.0	0.0	0
W <sub>d, Ma</sub>	95.6	0.0	0.0	0.0	0
R <sub>d, CIE</sub>	39.9	58.7	27.9	65.0	25
Y <sub>d, CIE</sub>	81.2	-2.8	71.5	71.6	92
G <sub>d, CIE</sub>	52.2	-42.4	13.6	44.5	162
B <sub>d, CIE</sub>	30.5	1.4	-46.4	46.4	271



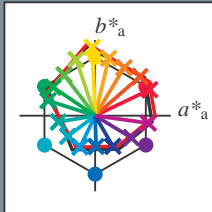
Ein- und Ausgabe: Offset-Reflektiv-System ORS18a

Daten für jede Geräte- (d) oder Elementarfarbe (e):

$HIC^*_e$   
 Bunttext für die Farben dieser Seite:  
 $H^*_e = R00Y_e, R25Y_e, \dots, B75R_e$

**ORS20a; adaptierte CIELAB-Daten**

$H^*_e$	$L^*=L^*_a a^*_a$	$b^*_a$	$C^*_{ab,a}$	$h^*_{ab,a}$	
R00Y_100_100_e	45.6	72.2	34.4	80.0	25
R25Y_100_100_e	50.5	59.2	51.6	78.6	41
R50Y_100_100_e	60.2	38.2	63.4	74.1	58
R75Y_100_100_e	70.9	17.9	75.9	77.9	76
Y00G_100_100_e	83.6	-3.6	90.4	90.4	92
Y25G_100_100_e	74.5	-25.0	74.3	78.4	108
Y50G_100_100_e	62.6	-40.9	53.8	67.6	127
Y75G_100_100_e	54.1	-55.5	37.5	67.0	145
G00B_100_100_e	50.6	-62.1	19.9	65.2	162
G25B_100_100_e	53.0	-48.6	-8.2	49.2	189
G50B_100_100_e	55.0	-36.2	-27.2	45.3	216
G75B_100_100_e	53.3	-19.8	-41.3	45.9	244
B00R_100_100_e	40.2	1.2	-40.6	40.6	271
B25R_100_100_e	28.1	23.4	-40.3	46.7	300
B50R_100_100_e	31.1	47.7	-29.1	55.9	328
B75R_100_100_e	41.4	70.4	-9.8	71.1	352



%Umfang  
 $u^*_{rel} = 92$   
 %Regularität  
 $g^*_{H,rel} = 57$   
 $g^*_{C,rel} = 58$

**ORS20a; adaptierte CIELAB-Daten**

Name	$L^*=L^*_a a^*_a$	$b^*_a$	$C^*_{ab,a}$	$h^*_{ab,a}$	
R <sub>e</sub> ,Ma	45.6	72.2	34.4	80.0	25
Y <sub>e</sub> ,Ma	83.6	-3.6	90.4	90.4	92
G <sub>e</sub> ,Ma	50.6	-62.1	19.9	65.2	162
C <sub>e</sub> ,Ma	55.0	-36.2	-27.2	45.3	216
B <sub>e</sub> ,Ma	40.2	1.2	-40.6	40.6	271
M <sub>e</sub> ,Ma	31.1	47.7	-29.1	55.9	328
N <sub>e</sub> ,Ma	24.3	0.0	0.0	0.0	0
W <sub>e</sub> ,Ma	95.6	0.0	0.0	0.0	0
R <sub>e</sub> ,CIE	39.9	58.7	27.9	65.0	25
Y <sub>e</sub> ,CIE	81.2	-2.8	71.5	71.6	92
G <sub>e</sub> ,CIE	52.2	-42.4	13.6	44.5	162
B <sub>e</sub> ,CIE	30.5	1.4	-46.4	46.4	271

