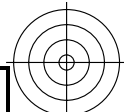
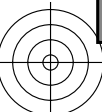
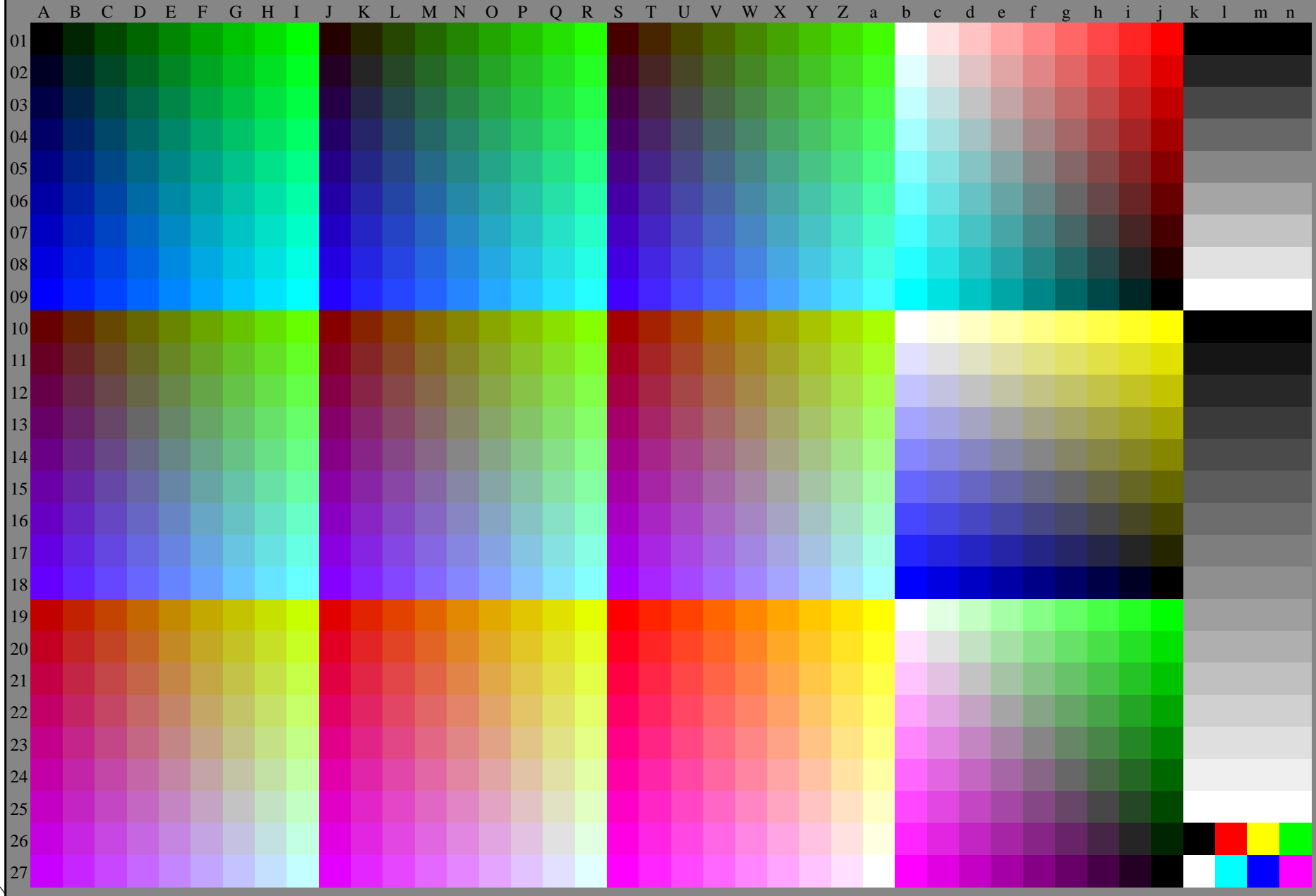


vedi file simili: <http://farbe.li.tu-berlin.de/PI40/PI40.HTM>
informazioni tecniche: <http://www.ps.bam.de> o <http://130.149.60.45/~farbmetrik>

Applicazione TUB: 20160501-PI40/PI40LONP.PDF /PS
TUB materiale: code=rhata



4-003130-L0 PI400-70 Test chart G with 1080 colours; 9 or 16 step colour scales; data in column (A-n): rgb (A_n), 3D = 0

Grafico TUB-PI40; grafico per il test
1080 colori di norma, 3D=0, de=0, sRGB

Input: *rgb/cmyk* -> *rgb_d*
Output: trasferire a *rgb_d*