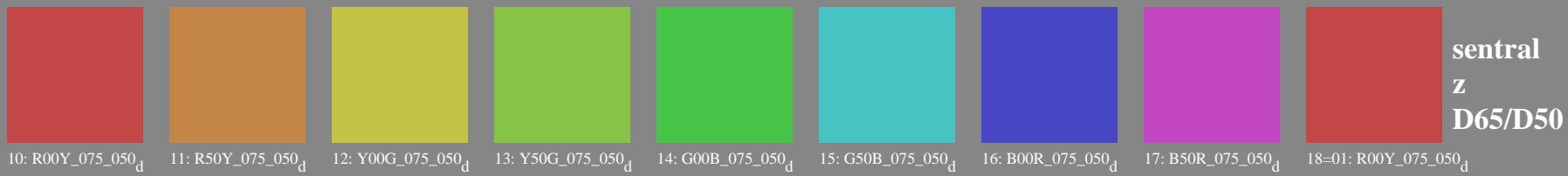
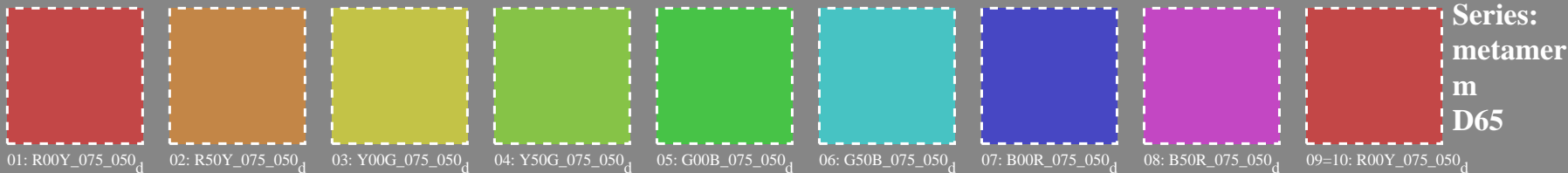
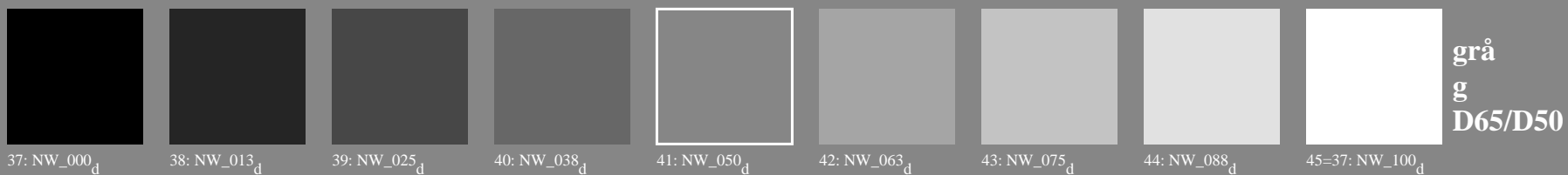
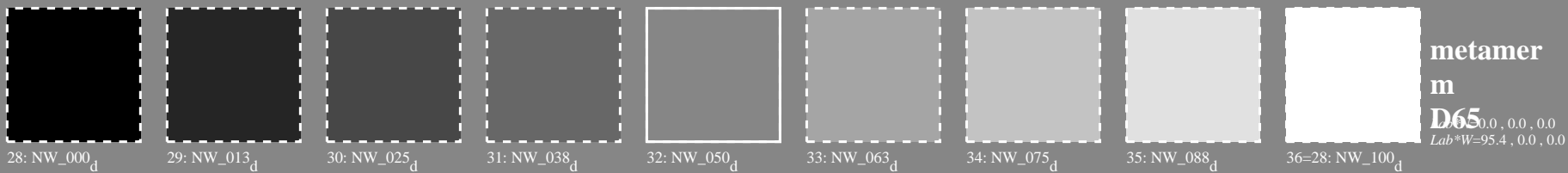


Prøveplansje 2 for fargegjengivelse: metamere farger D65 og D50; standard display (sRGB); $rgb \rightarrow rgb^*d$

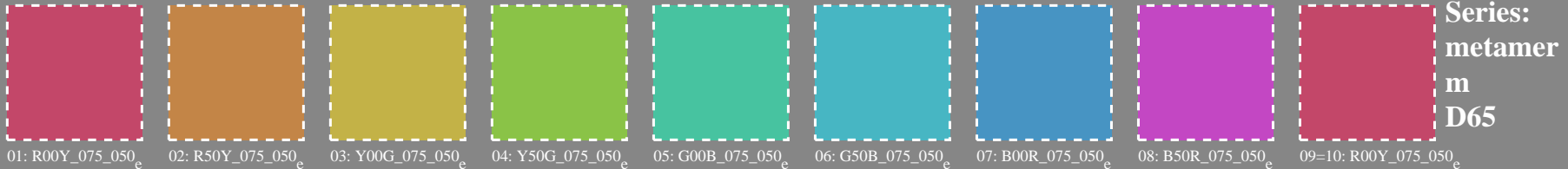


metameric colours only possible for offset print and colour printers with at least four basic colours, either *CMYK* or *CMY0*

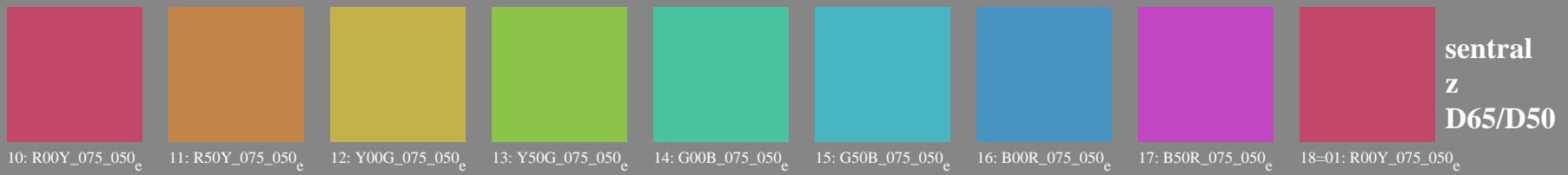


metameric colours only possible for offset print and colour printers with at least four basic colours, either *CMYK* or *CMY0*

Prøveplansje 2 for fargegjengivelse: metamere farger D65 og D50; standard display (*sRGB*); *rgb*→*rgb***e*



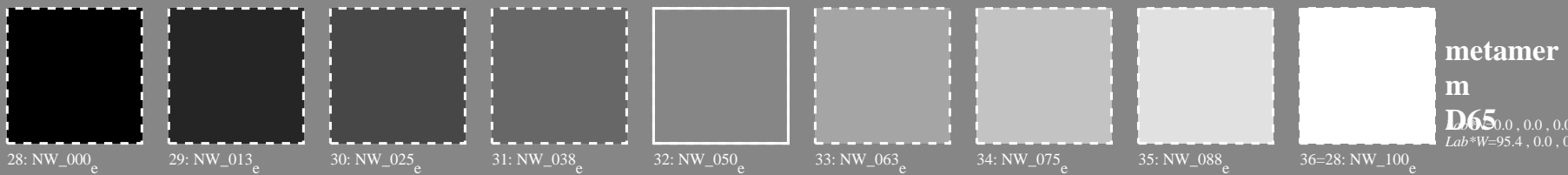
Series:
metamer
m
D65



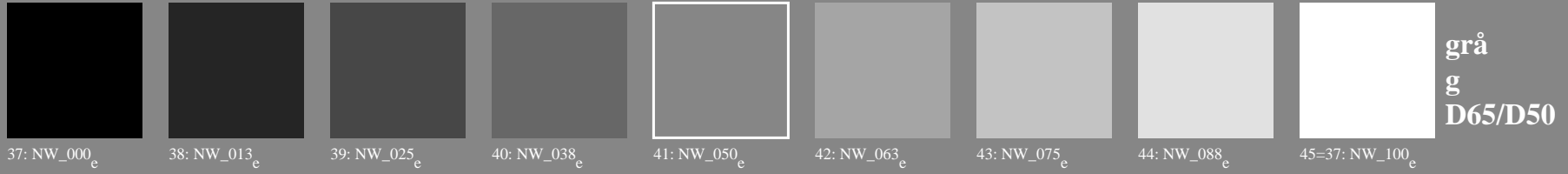
sentral
Z
D65/D50

metameric colours only possible for offset print and colour printers
with at least four basic colours, either *CMYK* or *CMY0*

metamer
m
D50



metamer
m
D65
L* = 0.0, 0.0, 0.0
Lab*W = 95.4, 0.0, 0.0

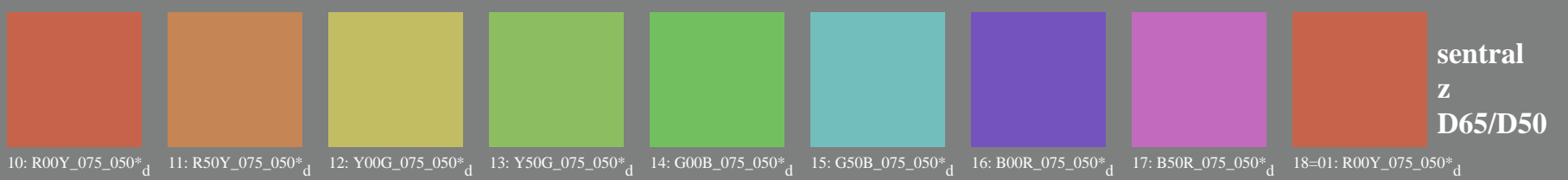
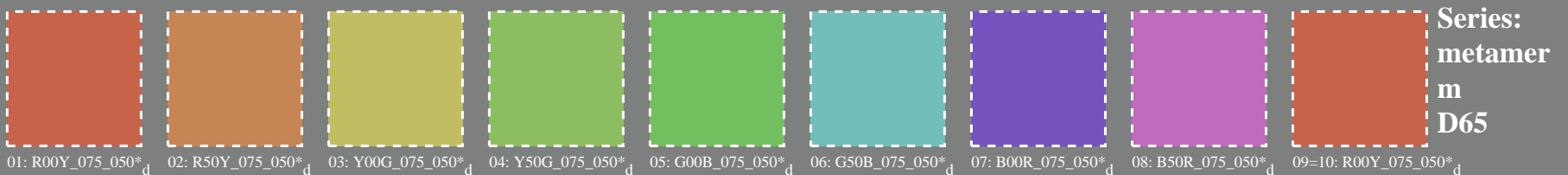


grå
g
D65/D50

metameric colours only possible for offset print and colour printers
with at least four basic colours, either *CMYK* or *CMY0*

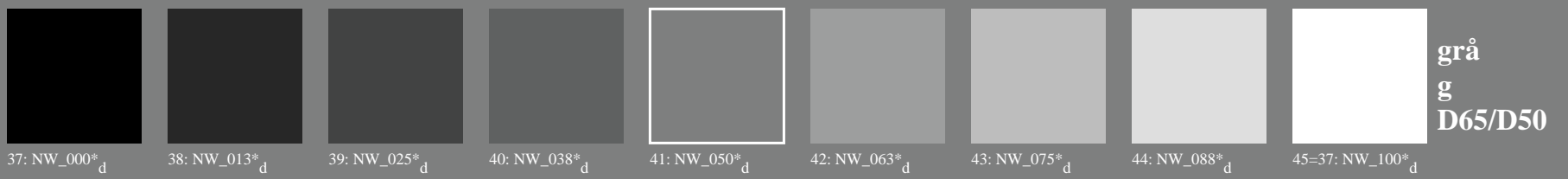
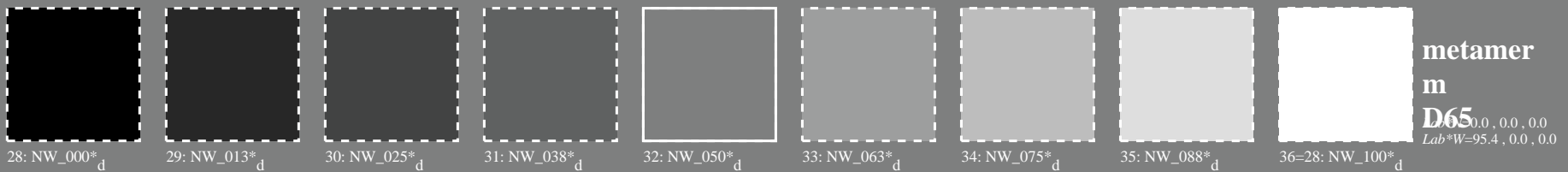
metamer
m
D50

Prøveplansje 2 for fargegjengivelse: metamere farger D65 og D50; standard display (sRGB); rgb→rgb*dd



metameric colours only possible for offset print and colour printers with at least four basic colours, either *CMYK* or *CMY0*

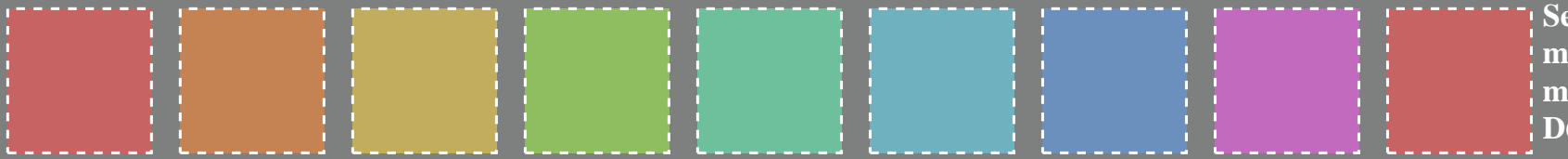
metamer m D50



metameric colours only possible for offset print and colour printers with at least four basic colours, either *CMYK* or *CMY0*

metamer m D50

Prøveplansje 2 for fargegjengivelse: metamere farger D65 og D50; standard display (sRGB); rgb→rgb*de



Series:
metamer
m
D65

01: R00Y_075_050*_e 02: R50Y_075_050*_e 03: Y00G_075_050*_e 04: Y50G_075_050*_e 05: G00B_075_050*_e 06: G50B_075_050*_e 07: B00R_075_050*_e 08: B50R_075_050*_e 09=10: R00Y_075_050*_e



sentral
Z
D65/D50

10: R00Y_075_050*_e 11: R50Y_075_050*_e 12: Y00G_075_050*_e 13: Y50G_075_050*_e 14: G00B_075_050*_e 15: G50B_075_050*_e 16: B00R_075_050*_e 17: B50R_075_050*_e 18=01: R00Y_075_050*_e

metameric colours only possible for offset print and colour printers
with at least four basic colours, either *CMYK* or *CMY0*

metamer
m
D50



metamer
m
D65
L=99.0, 0.0, 0.0
Lab*W=95.4, 0.0, 0.0

28: NW_000*_e 29: NW_013*_e 30: NW_025*_e 31: NW_038*_e 32: NW_050*_e 33: NW_063*_e 34: NW_075*_e 35: NW_088*_e 36=28: NW_100*_e



grå
g
D65/D50

37: NW_000*_e 38: NW_013*_e 39: NW_025*_e 40: NW_038*_e 41: NW_050*_e 42: NW_063*_e 43: NW_075*_e 44: NW_088*_e 45=37: NW_100*_e

metameric colours only possible for offset print and colour printers
with at least four basic colours, either *CMYK* or *CMY0*

metamer
m
D50