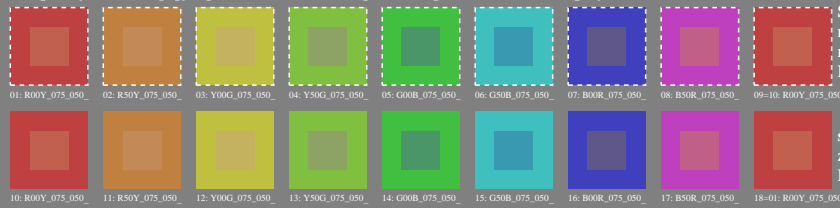


Prøveplansje 2 for fargegjengivelse: metamerer farger D65 og D50; standard display (sRGB)

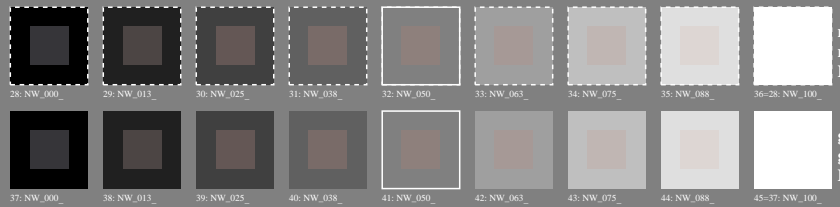


Series:
metamer
m
D65

sentral
z
D65/D50

metameric colours only possible for offset print and colour printers
with at least four basic colours, either *CMYK* or *CMY0*

metamer
m
D50



metamer
m
D65

grå
g
D65/D50

metameric colours only possible for offset print and colour printers
with at least four basic colours, either *CMYK* or *CMY0*

metamer
m
D50

see similar files: http://130.149.60.45/~farbmatrik/PN22/PN22.LHTM
technical information: http://www.ps.bam.de or http://130.149.60.45/~farbmatrik

TUB registration: 20130201-PN22/PN22L0N1.TXT /PS
application for measurement of display output

TUB material: code=rhatha

