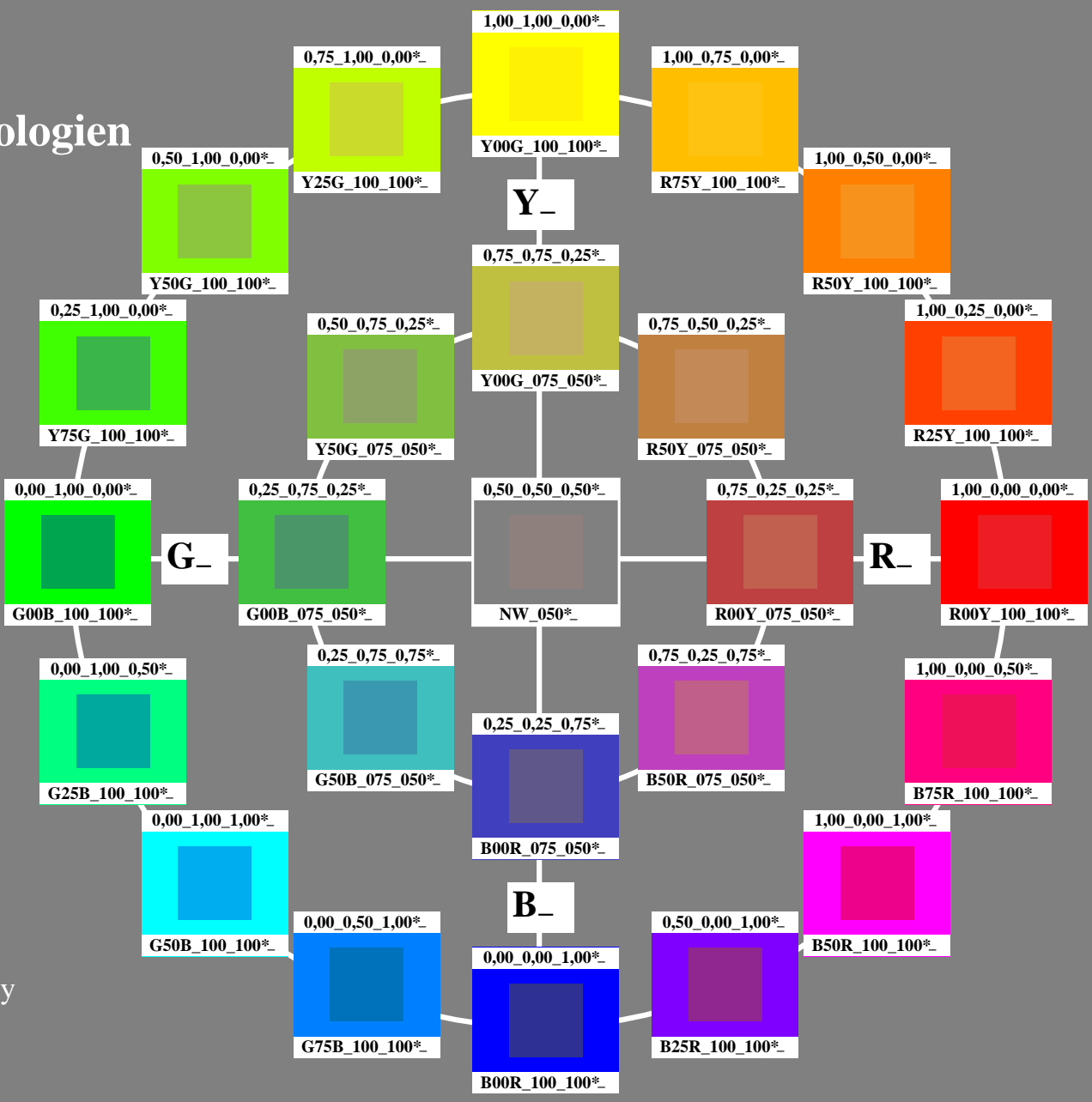


# Farge og Fargesyn Elementærfarger i Fargeinformasjonsteknologien

Author: Prof. Dr. Klaus Richter

25 standard farge for D65  
fargetonesirkel: 16 eller 8 trinns  
standard display sRGB  
rgb data:  $rgb^*_e$  (top)  
elementærfargetoner  $H^*$ , briljans  $I^*$ ,  
kulørthet  $C^*$ :  $HIC^*_e$  (bottom)

Special print for the exhibition  
Farge og Fargesyn  
Section Lighting Technology  
of the Berlin University of Technology  
Einsteinufer 19, D-10587 Berlin  
se: <http://www.li.tu-berlin.de>  
og <http://130.149.60.45/~farbmetrik>  
og <http://130.149.60.45/~farbmetrik>



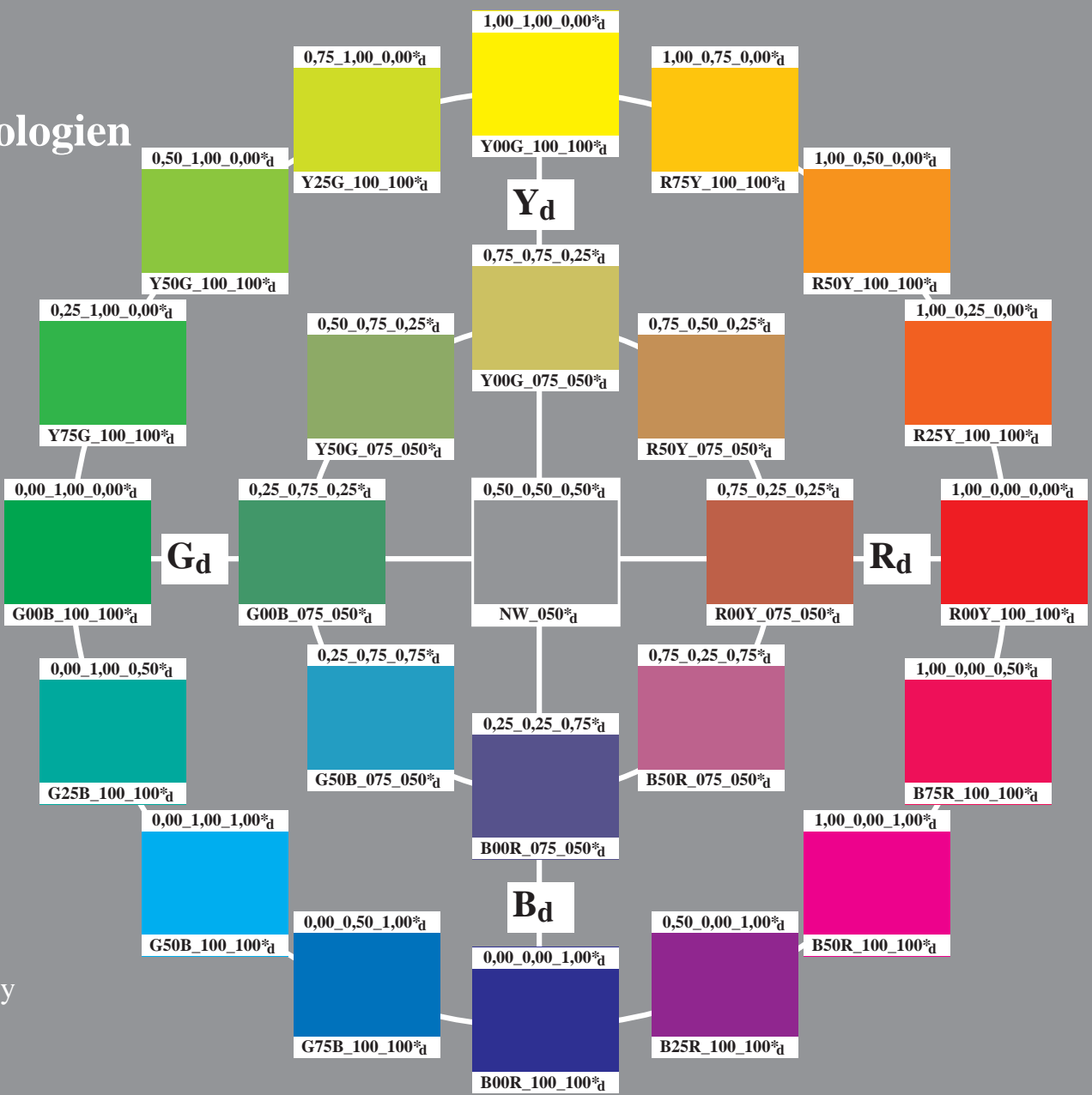
se lignende filer: <http://130.149.60.45/~farbmetrik/PN79/PN79LONA.TXT>  
teknisk informasjon: <http://www.ps.bam.de> eller <http://130.149.60.45/~farbmetrik>

# Farge og Fargesyn Elementærfarger i Fargeinformasjonsteknologien

Author: Prof. Dr. Klaus Richter

25 standard farge for D65  
fargetonesirkel: 16 eller 8 trinns  
standard display sRGB  
rgb data:  $rgb * e$  (top)  
elementærfargetoner  $H^*$ , briljans  $I^*$ ,  
kulørthet  $C^*$ :  $HIC * e$  (bottom)

Special print for the exhibition  
Farge og Fargesyn  
Section Lighting Technology  
of the Berlin University of Technology  
Einsteinufer 19, D-10587 Berlin  
se: <http://www.li.tu-berlin.de>  
og <http://130.149.60.45/~farbmetrik>  
og <http://130.149.60.45/~farbmetrik>



se lignende filer: <http://130.149.60.45/~farbmetrik/PN79/PN79LONA.TXT> /PS  
teknisk informasjon: <http://www.ps.bam.de> eller <http://130.149.60.45/~farbmetrik>

TUB registrering: 20150701-PN79/PN79LONA.TXT /PS  
anvendelse for måling av laserprinter output, separasjon cmyn6 (CMYK)

TUB-material: code=rh4ta



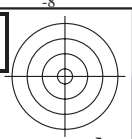
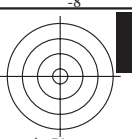
TUB registrering: 20150701-PN79/PN79L0NA.TXT /.PS TUB-material: code=rh4ta  
anvendelse for måling av laserprinter output, separasjon cmyk6 (CMYK)

se lignende filer: <http://130.149.60.45/~farbmetrik/PN79/PN79L0NA.TXT>  
teknisk informasjon: <http://www.ps.bam.de> eller <http://130.149.60.45/~farbmetrik>

<http://www.li.tu-berlin.de>  
<http://130.149.60.45/~farbmetrik>  
og <http://5-003330-Li.tu-berlin.de>

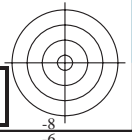
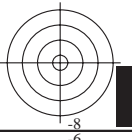
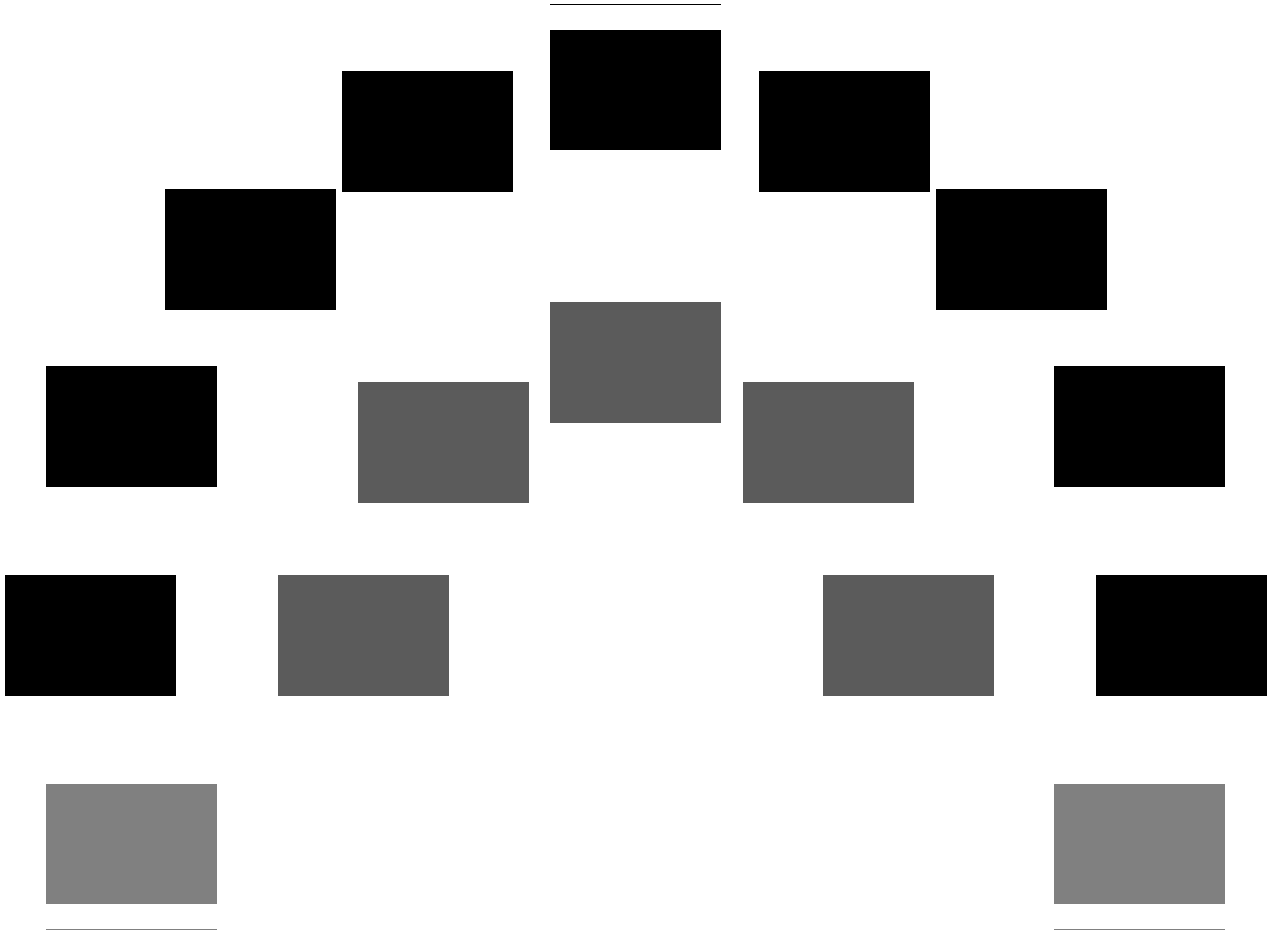
5-003330-E0 PN790-70 PE4300P\_120901.TXT, 1080 colors, Separation cmyk6\*  
TUB-prøveplansje PN79; fargetonesirkel; 16 og 8 trinns input: *rgb/cmyk* -> *rgb<sub>d</sub>*  
25 standard farge for D65, 3D=0, de=0, *cmyk* output: overføring til *cmyk<sub>d</sub>*





se lignende filer: <http://130.149.60.45/~farbmetrik/PN79/PN79.HTM>  
teknisk informasjon: <http://www.ps.bam.de> eller <http://130.149.60.45/~farbmetrik>

TUB registrering: 20150701-PN79/PN79L0NA.TXT /.PS TUB-material: code=rha4ta  
anvendelse for måling av laserprinter output, separasjon cmyk6 (CMYK)



5-003430-L0

PN790-70

PE4300P\_120901.TXT, 1080 colors, Separation cmyk6\*

TUB-prøveplansje PN79; fargetonesirkel; 16 og 8 trinn  
25 standard farge for D65, 3D=0, de=0, cmyk

input:  $rgb/cmyk \rightarrow rgb_d$   
output: overføring til  $cmyk_d$

5-003430-F0

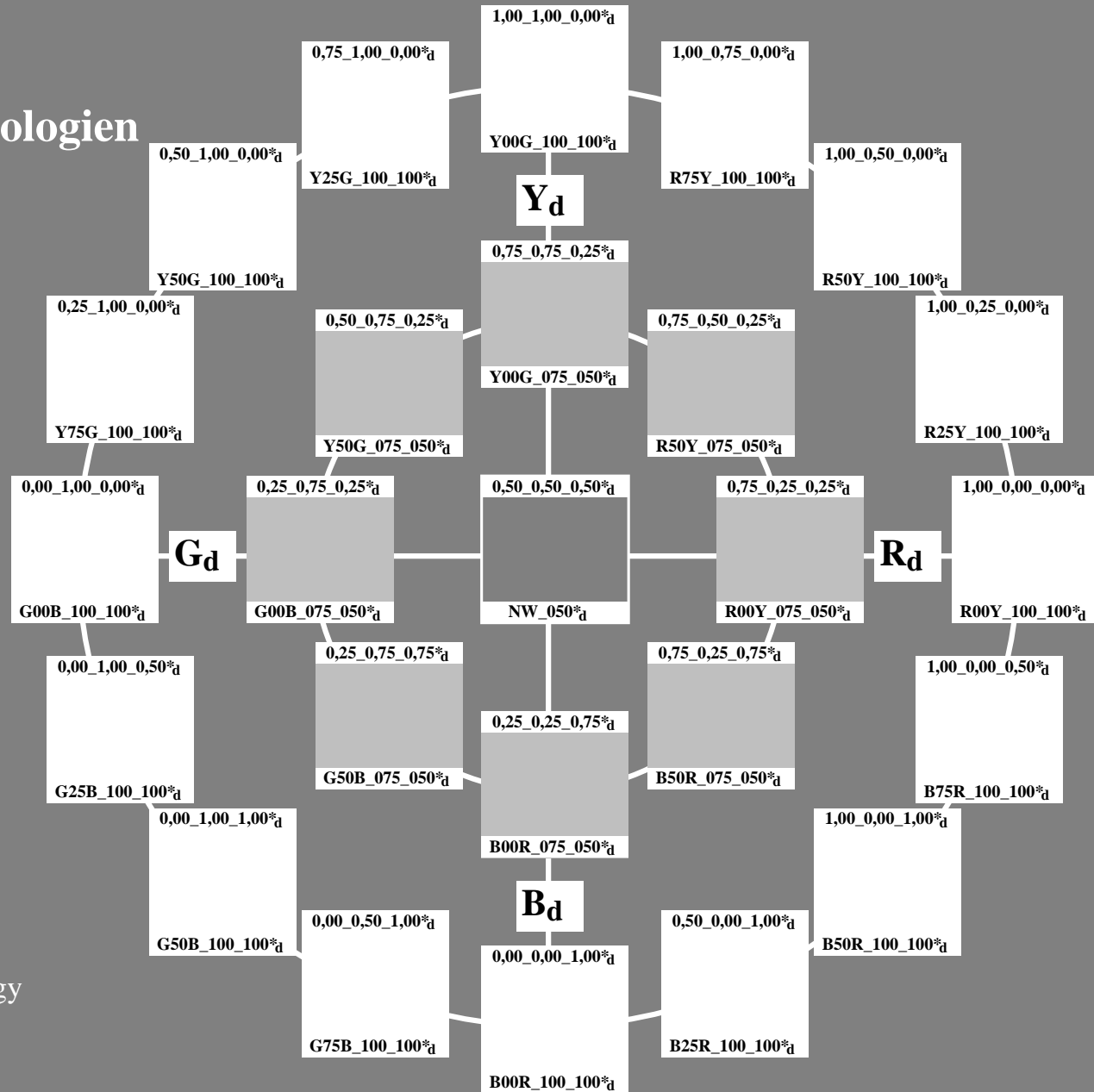
C M Y O L V

# Farge og Fargesyn Elementærfarger i Fargeinformasjonsteknologien

Author: Prof. Dr. Klaus Richter

25 standard farge for D65  
fargetonesirkel: 16 eller 8 trinns  
standard display *sRGB*  
*rgb* data: *rgb*\*<sub>e</sub> (top)  
elementærfargetoner *H*\*<sub>e</sub>, briljans *I*\*<sub>e</sub>,  
kulørthet *C*\*<sub>e</sub>: *HIC*\*<sub>e</sub> (bottom)

Special print for the exhibition  
Farge og Fargesyn  
Section Lighting Technology  
of the Berlin University of Technology  
Einsteinufer 19, D-10587 Berlin  
se: <http://www.li.tu-berlin.de>  
og <http://130.149.60.45/~farbmetrik>



TUB registrering: 20150701-PN79/PN79L0NA.TXT /PS  
anvendelse for måling av laserprinter output, separasjon *cmyn6* (CMYK)  
TUB-material: code=rh4ta

# Farge og Fargesyn Elementærfarger i Fargeinformasjonsteknologien

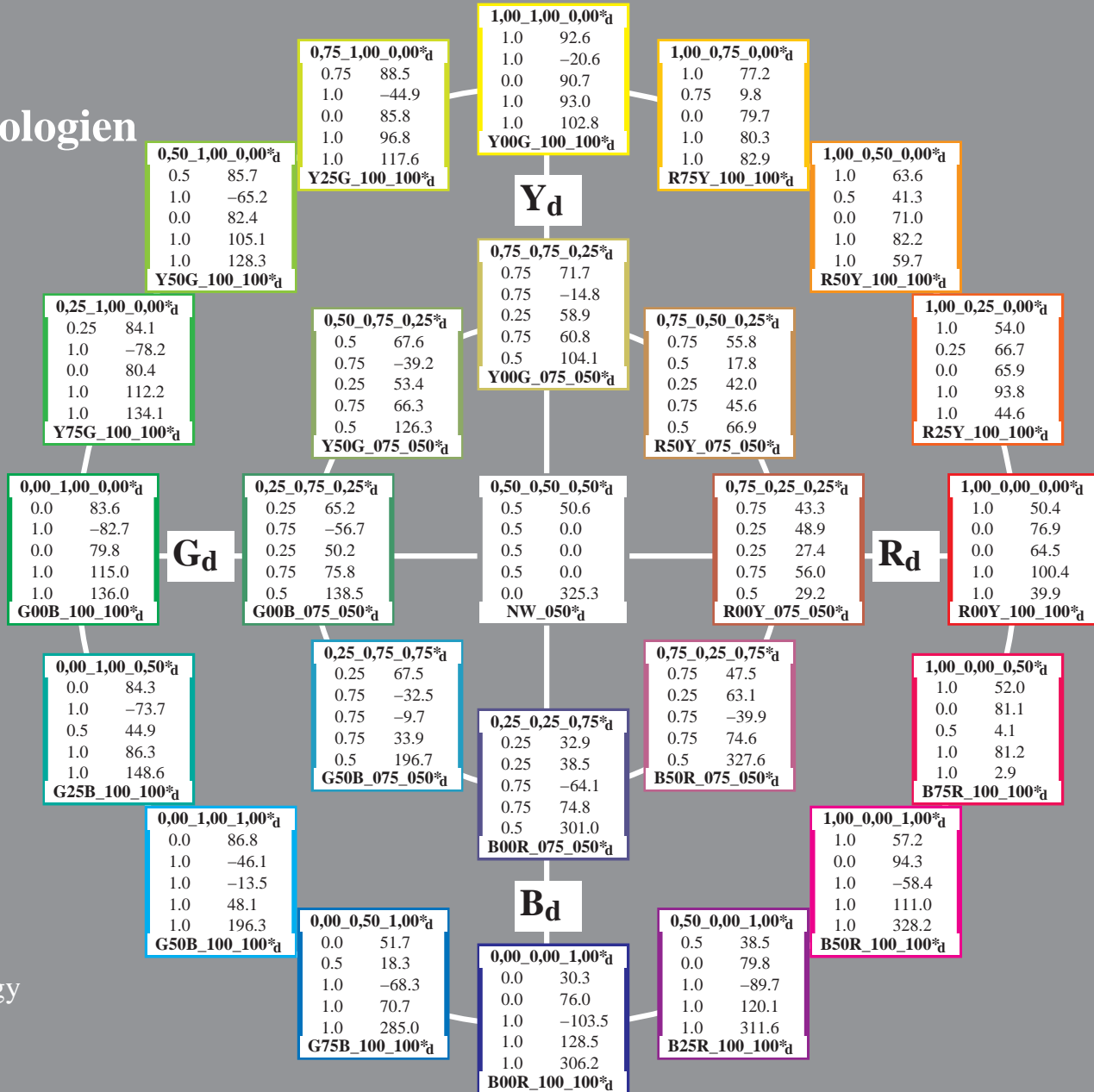
Author: Prof. Dr. Klaus Richter

25 standard farge for D65  
 fargetonesirkel: 16 eller 8 trinns  
 standard display sRGB  
 rgb data:  $rgb*_e$  (top)  
 elementærfargetoner  $H^*$ , briljans  $I^*$ ,  
 kulørthet  $C^*$ ;  $HIC*_e$  (bottom)  
 colour code:  
 $rgbicd$ ;  $LabCh^*d$

Special print for the exhibition  
 Farge og Fargesyn  
 Section Lighting Technology  
 of the Berlin University of Technology  
 Einsteinufer 19, D-10587 Berlin  
 se: <http://www.li.tu-berlin.de>  
 og <http://130.149.60.45/~farbmetrik>  
 og <http://130.149.60.45/~farbmetrik>

se lignende filer: <http://130.149.60.45/~farbmetrik/PN79/PN79L0NA.TXT> /PS  
 teknisk informasjon: <http://www.ps.bam.de> eller <http://130.149.60.45/~farbmetrik>

TUB registrering: 20150701-PN79/PN79L0NA.TXT /PS  
 anvendelse for måling av laserprinter output, separasjon cmyn6 (CMYK)  
 TUB-material: code=rh4ta



# Farge og Fargesyn Elementærfarger i Fargeinformasjonsteknologien

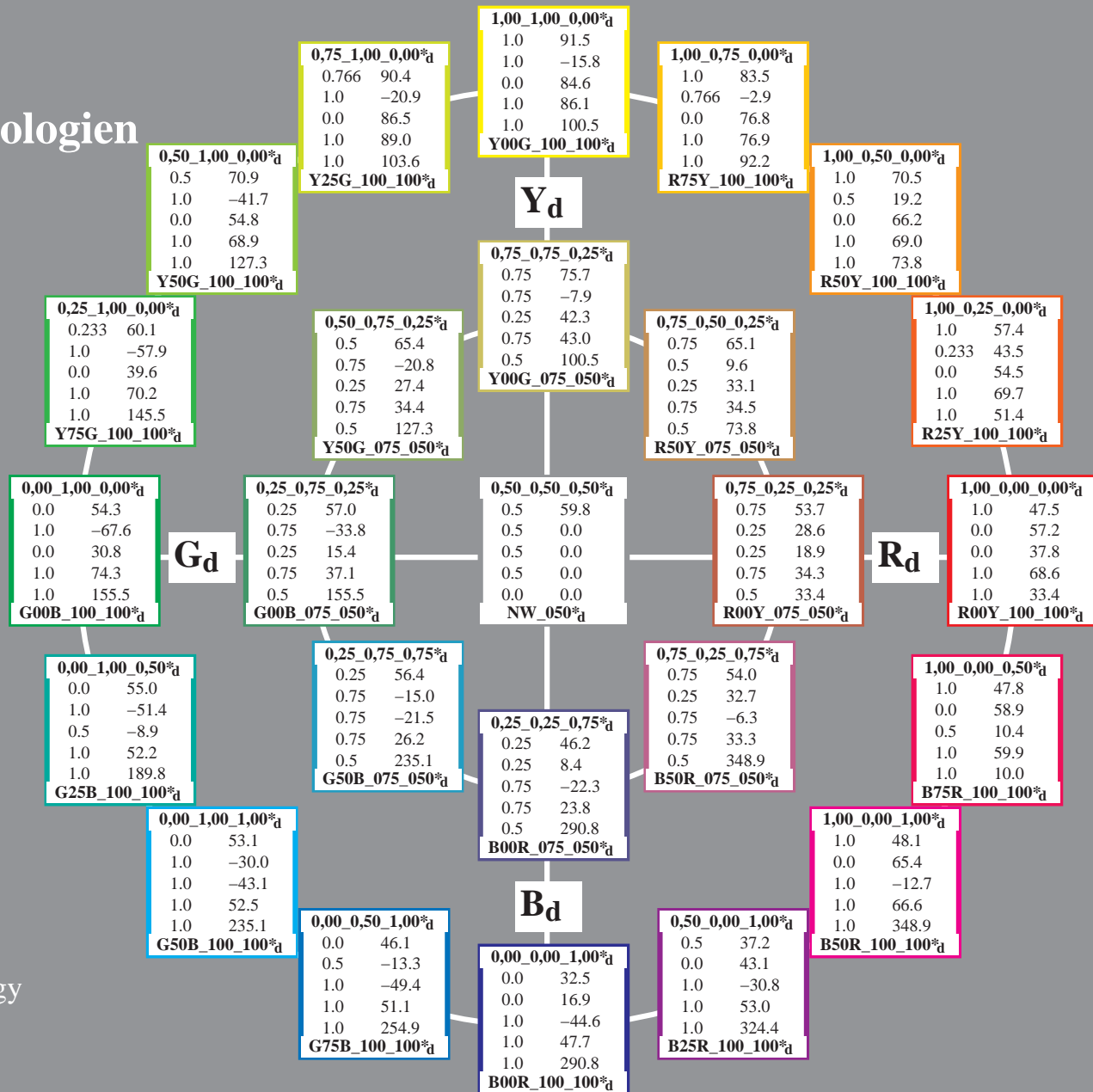
Author: Prof. Dr. Klaus Richter

25 standard farge for D65  
 fargetonesirkel: 16 eller 8 trinns  
 standard display *sRGB*  
*rgb* data: *rgb*\**e* (top)  
 elementærfargetoner *H*\*, briljans *I*\*,  
 kulørthet *C*\*: *HIC*\**e* (bottom)  
 colour code:  
*rgbic*\**d*; *LabCh*\**d*

Special print for the exhibition  
 Farge og Fargesyn  
 Section Lighting Technology  
 of the Berlin University of Technology  
 Einsteinufer 19, D-10587 Berlin  
 se: <http://www.li.tu-berlin.de>  
 og <http://130.149.60.45/~farbmetrik>  
 og <http://130.149.60.45/~farbmetrik>

se tilgjengende filer: <http://130.149.60.45/~farbmetrik/PN79/PN79LONA.TXT> /PS teknisk informasjon: <http://www.ps.bam.de> eller <http://130.149.60.45/~farbmetrik>

TUB registrering: 20150701-PN79/PN79LONA.TXT /PS TUB-material: code=rh4ta  
 anvendelse for måling av laserprinter output, separasjon cmyn6 (CMYK)



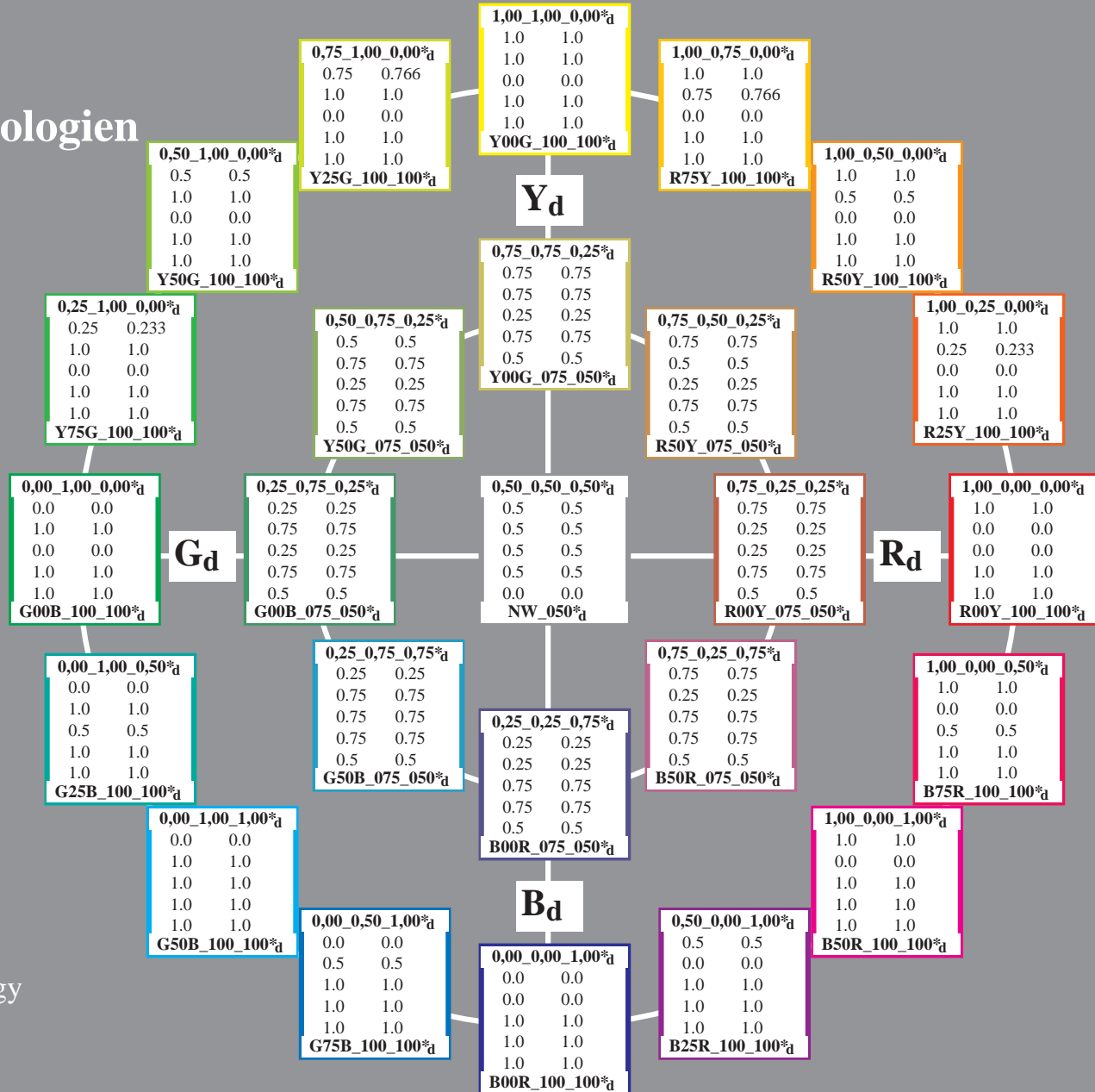


# Farge og Fargesyn Elementærfarger i Fargeinformasjonsteknologien

Author: Prof. Dr. Klaus Richter

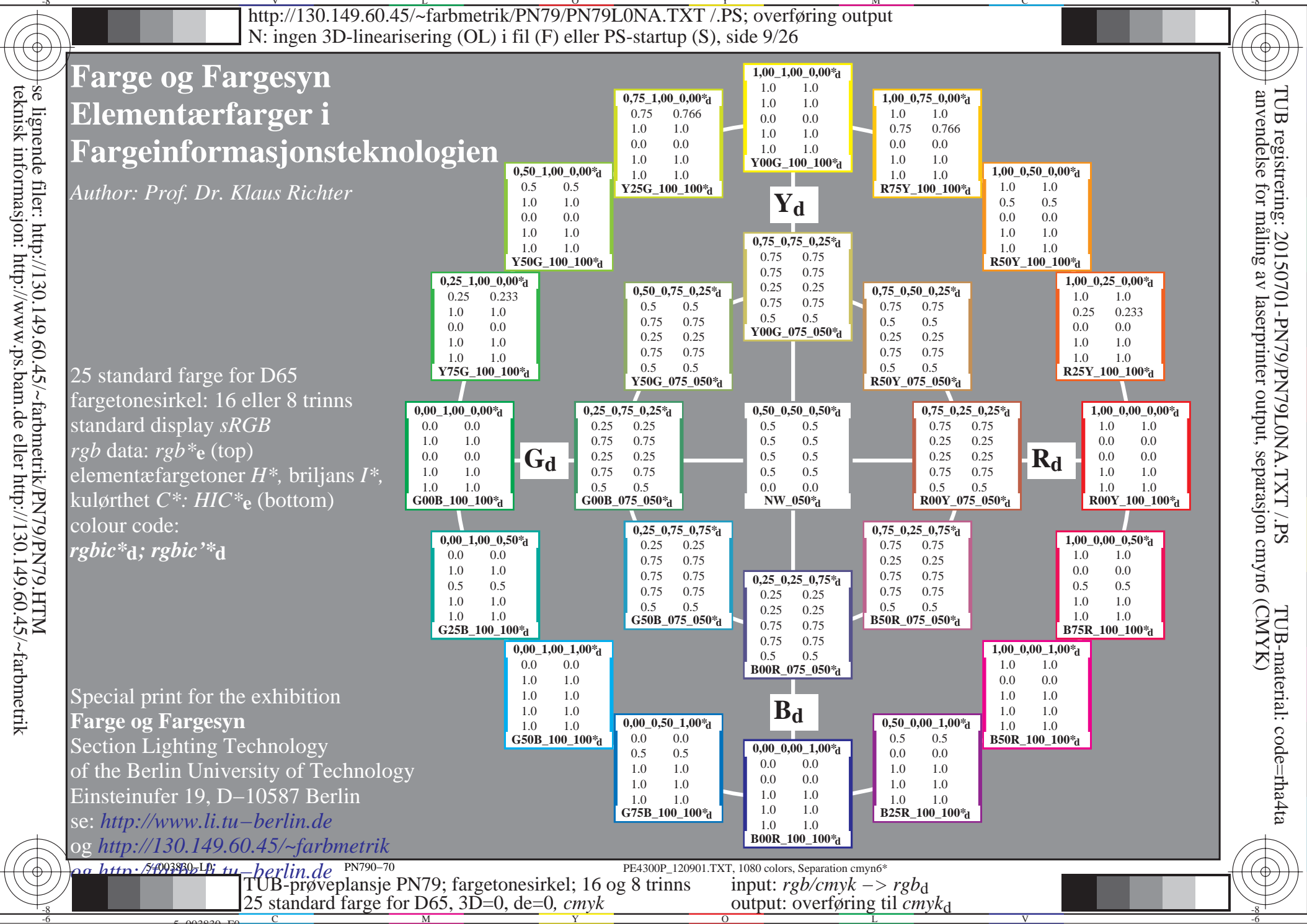
25 standard farge for D65  
 fargetonesirkel: 16 eller 8 trinns  
 standard display *sRGB*  
*rgb* data: *rgb*\*<sub>e</sub> (top)  
 elementærfargetoner *H*\*, briljans *I*\*,  
 kulørthet *C*\*: *HIC*\*<sub>e</sub> (bottom)  
 colour code:  
*rgbic*\*<sub>d</sub>; *rgbic*\*<sub>d</sub>

Special print for the exhibition  
 Farge og Fargesyn  
 Section Lighting Technology  
 of the Berlin University of Technology  
 Einsteinufer 19, D-10587 Berlin  
 se: <http://www.li.tu-berlin.de>  
 og <http://130.149.60.45/~farbmetrik>  
 og <http://130.149.60.45/~farbmetrik>



se lignende filer: <http://130.149.60.45/~farbmetrik/PN79/PN79L0NA.TXT> /PS  
 teknisk informasjon: <http://www.ps.bam.de> eller <http://130.149.60.45/~farbmetrik>

TUB registrering: 20150701-PN79/PN79L0NA.TXT /PS  
 anvendelse for måling av laserprinter output, separasjon *cmYn6* (CMYK)  
 TUB-material: code=rh4ta



# Farge og Fargesyn Elementærfarger i Fargeinformasjonsteknologien

Author: Prof. Dr. Klaus Richter

25 standard farge for D65  
 fargetonesirkel: 16 eller 8 trinns  
 standard display sRGB  
 rgb data:  $rgb * e$  (top)  
 elementærfargetoner  $H^*$ , briljans  $I^*$ ,  
 kulørthet  $C^*$ :  $HIC * e$  (bottom)  
 colour code:  
 $LabCh * d$ ;  $Lab * /DE * /h * d$

Special print for the exhibition  
 Farge og Fargesyn  
 Section Lighting Technology  
 of the Berlin University of Technology  
 Einsteinufer 19, D-10587 Berlin  
 se: <http://www.li.tu-berlin.de>  
 og <http://130.149.60.45/~farbmetrik>  
 og <http://130.149.60.45/~farbmetrik>

se lignende filer: <http://130.149.60.45/~farbmetrik/PN79/PN79L0NA.TXT> /PS  
 teknisk informasjon: <http://www.ps.bam.de> eller <http://130.149.60.45/~farbmetrik>

TUB registrering: 20150701-PN79/PN79L0NA.TXT /PS  
 anvendelse for måling av laserprinter output, separasjon cmyn6 (CMYK)  
 TUB-material: code=rh4ta

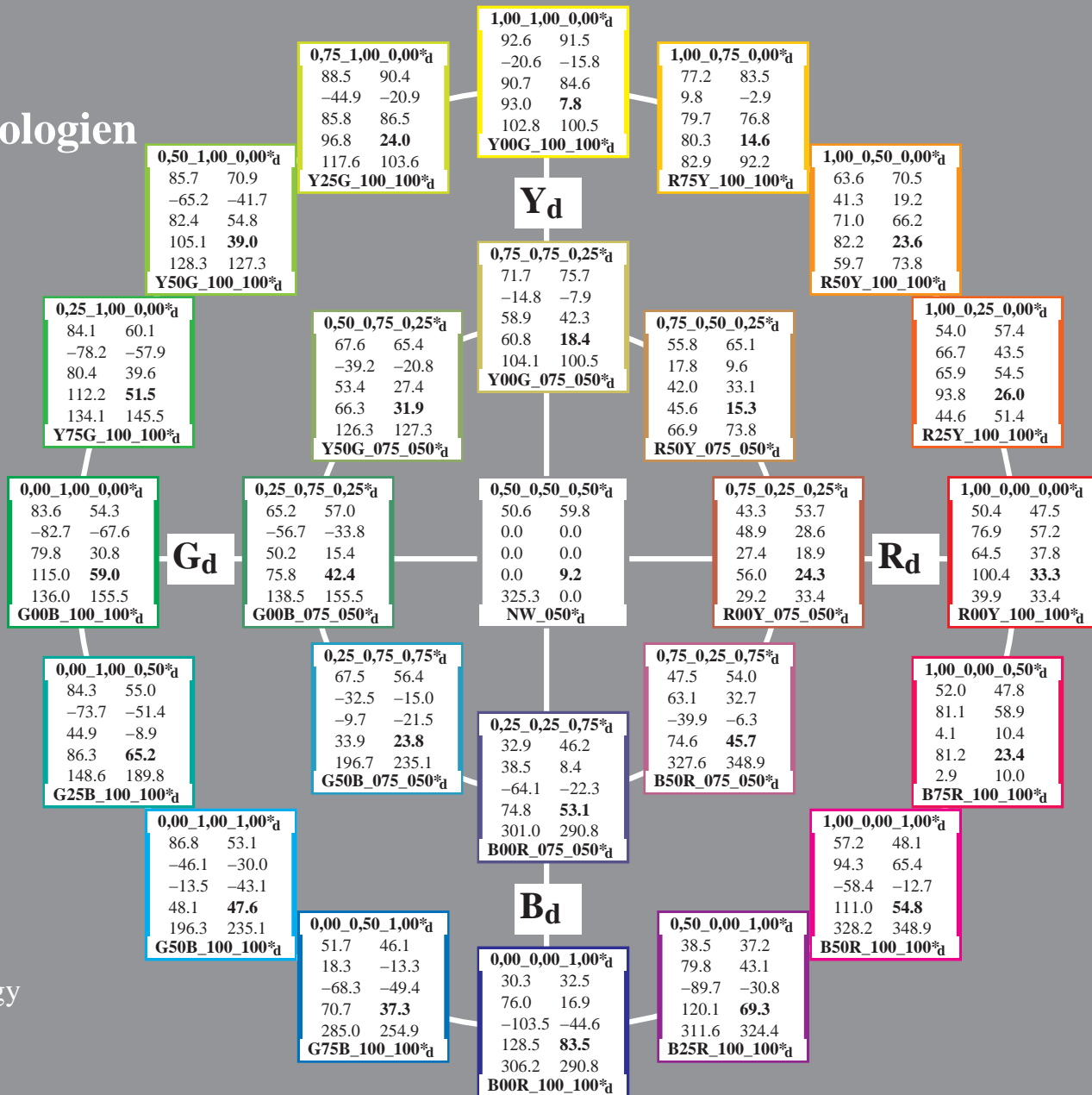






Table with columns: n=j, HIC\*Fa, rgb\_Fa, iet\_Fa, hsi\_Fa, rgb\*\*Fa, LabCh\*Fa, rgb\*\*Fa, LabCh\*\*Fa, DE\*\*Fa, hsi\_Md, rgb\*\*Md, LabCh\*\*Md. Contains 80 rows of color calibration data.

delta E\*\* = 10.8

5-0031230-F0

PN790-7N, 13/26-F

PE4300P\_120901.TXT, 1080 colors, Separation cmykn6\*

TUB-prøveplansje PN79; fargetonesirkel; 16 og 8 trinns farger og fargeavstander, ΔE\*, 3D=0, de=0, cmyk

input: rgb/cmyk -> rgbd output: overføring til cmykd

5-0031230-F0

teknisk informasjon: http://130.149.60.45/~farbmetrik/PN79/PN79L0NA.TXT / PS  
http://www.ps.bam.de eller http://130.149.60.45/~farbmetrik

TUB registrering: 20150701-PN79/PN79L0NA.TXT / PS  
anvendelse for måling av laserprinter output, separasjon cmykn6 (CMYK)  
TUB-material: code=rh4ta

Table with columns: n, HIC\*Fa, rgb\_Fa, icf\_Fa, hsi\_Fa, rgb\*Fa, LabCh\*Fa, rgb\*Fa, LabCh\*Fa, DE\*Fa, hsi\_Md, rgb\*Md, LabCh\*Md. It contains a large grid of numerical data representing color calibration parameters for various printer models and conditions.

delta E\* = 8.5

se lignende filer: http://130.149.60.45/~farbmetrik/PN79/PN79LONA.TXT /PS teknisk informasjon: http://www.ps.bam.de eller http://130.149.60.45/~farbmetrik

TUB registrering: 20150701-PN79/PN79LONA.TXT /PS TUB-material: code=rhataa anvendelse for måling av laserprinter output, separasjon cmyn6 (CMYK)

TUB-prøveplansje PN79; fargetonesirkel; 16 og 8 trinn farger og fargeavstander, ΔE\*, 3D=0, de=0, cmyk input: rgb/cmyk -> rgb\_d output: overføring til cmyk\_d



Table with columns: n, HIC\*Fa, rgb\_Fa, icf\_Fa, hsi\_Fa, rgb\*\*Fa, LabCh\*\*Fa, rgbb\*\*Fa, LabCh\*\*Fa, DE\*\*Fa, hsi\_Md, rrgb\*\*Md, LabCh\*\*Md. It contains 243 rows of data representing various color and separation metrics.

se liggende filer: http://130.149.60.45/~farbmetrik/PN79/PN79.HTM  
teknisk informasjon: http://www.ps.bam.de eller http://130.149.60.45/~farbmetrik

TUB registrering: 20150701-PN79/PN79L0NA.TXT /.PS  
anvendelse for måling av laserprinter output, separasjon cmyrn6 (CMYK)  
TUB-material: code=tha4ta



http://130.149.60.45/~farbmetrik/PN79/PN79L0NA.TXT / .PS; overføring output

N: ingen 3D-linearisering (OL) i fil (F) eller PS-startup (S), side 17/26

Table with columns for n, HIC\*Fd, rgb\_Fd, icf\_Fd, hsi\_Fd, rgb\*Fd, LabCh\*Fd, DE\*Fd, hsiMd, rgb\*Md, LabCh\*Md. It contains 40 rows of colorimetric data for various printer models and color patches.

delta E\*ab = 7.3

5-0031630-FO

PN790-7N, 17/26-F

PE4300P\_120901.TXT, 1080 colors, Separation cmyrn6\*

TUB-prøveplansje PN79; fargetonesirkel; 16 og 8 trinns farger og fargeavstander, ΔE\*, 3D=0, de=0, cmyk

input: rgb/cmyk -> rgb\_d output: overføring til cmyk\_d

5-0031630-FO

teknisk informasjon: http://130.149.60.45/~farbmetrik/PN79/PN79L0NA.TXT / .PS

TUB registrering: 20150701-PN79/PN79L0NA.TXT / .PS anvendelse for måling av laserprinter output, separasjon cmyrn6 (CMYK)

TUB-material: code=rhata4



Table with columns for color channels (n, HIC\*Fa, rgb\*Fa, icf\*Fa, hsi\*Fa, rgb\*\*Fa, LabCh\*Fa, rgb\*\*Fa, LabCh\*Fa, DE\*\*Fa, hsiMd, rgb\*\*Md, LabCh\*\*Md) and rows of color data points.

delta E\* = 6.8

se lignende filer: http://130.149.60.45/~farbmetrik/PN79/PN79.HTM teknisk informasjon: http://www.ps.bam.de eller http://130.149.60.45/~farbmetrik

TUB registrering: 20150701-PN79/PN79LONA.TXT / .PS anvendelse for måling av laserprinter output, separasjon cmyrn6 (CMYK) TUB-material: code=rhata



TUB-prøveplansje PN79; fargetonesirkel; 16 og 8 trinn farger og fargeavstander, ΔE\*, 3D=0, de=0, cmyk

input: rgb/cmyk -> rgb output: overføring til cmyk

Table with columns: n, HIC\*Fa, rgb\_Fa, iet\_Fa, hsi\_Fa, rgb\*Fa, LabCh\*Fa, rgb\*\*Fa, LabCh\*\*Fa, DE\*Fa, hsi\_Md, rgb\*\*Md, LabCh\*\*Md. Rows 486-566. Includes a 'delta E\*\* = 6.2' label at the bottom right of the table area.

se lignende filer: http://130.149.60.45/~farbmetrik/PN79/PN79L0NA.TXT / .PS  
teknisk informasjon: http://www.ps.bam.de eller http://130.149.60.45/~farbmetrik

TUB registrering: 20150701-PN79/PN79L0NA.TXT / .PS  
anvendelse for måling av laserprinter output, separasjon cmyrn6 (CMYK)  
TUB-material: code=rhata

5-0031830-F0

PN790-7N, 19/26-F

PE4300P\_120901.TXT, 1080 colors, Separation cmyrn6\*

delta E\*\* = 6.2

TUB-prøveplansje PN79; fargetonesirkel; 16 og 8 trinn  
farger og fargeavstander, ΔE\*, 3D=0, de=0, cmyk

input: rgb/cmyk -> rgbd  
output: overføring til cmykd

5-0031830-F0



Table with 38 columns: n, HIC\*Fa, rgb\_Fa, icf\_Fa, hsi\_Fa, rGb\*Fa, LabCh\*Fa, rGb\*Fa, LabCh\*Fa, DE\*Fa, hsi\_Md, rGb\*Md, LabCh\*Md. It contains color calibration data for 288 different color patches, including primary, secondary, and tertiary colors, as well as grayscale and neutral patches.

5-0032030-F0

PN790-7N, 21/26-F

PE4300P\_120901.TXT, 1080 colors, Separation cmyn6\*

delta E\*\*1 = 5.3

TUB-prøveplansje PN79; fargetonesirkel; 16 og 8 trinns farger og fargeavstander, ΔE\*, 3D=0, de=0, cmyk

input: rgb/cmyk → rgb<sub>d</sub> output: overføring til cmyk<sub>d</sub>

teknisk informasjon: http://30.149.60.45/~farbmetrik/PN79/PN79L0NA.TXT / PS  
http://www.ps.bam.de eller http://130.149.60.45/~farbmetrik

TUB registrering: 20150701-PN79/PN79L0NA.TXT / PS  
TUB-material: code=rhata4ta  
anvendelse for måling av laserprinter output, separasjon cmyn6 (CMYK)











se liggende filer: <http://130.149.60.45/~farbmetrik/PN79/PN79.HTM>  
 teknisk informasjon: <http://www.ps.bam.de> eller <http://130.149.60.45/~farbmetrik>

n	HIC*Fd	rgb_Fd	icf_Fd	hsi_Fd	rgb*Fd	LabCh*Fd	rgb*Fd	LabCh*Fd	DE*Fd	hsiMd	rgb*Md	LabCh*Md		
1053	NW_086a	0.866 0.866 0.866	0.866 0.0 0.866	360	0.866 0.866 0.866	86.1 0.0 0.0	0.0 0.0 0.0	0.866 0.866 0.866	90.6 0.0 -0.1	0.1 266.5	4.4 360	1.0 1.0 1.0	95.8 0.0 0.0	0.0 0.0 0.0
1054	NW_093a	0.933 0.933 0.933	0.933 0.0 0.933	360	0.933 0.933 0.933	91.0 0.0 0.0	0.0 0.0 0.0	0.933 0.933 0.933	94.4 0.0 -0.2	0.2 278.1	3.4 360	1.0 1.0 1.0	95.8 0.0 0.0	0.0 0.0 0.0
1055	NW_100a	1.0 1.0 1.0	1.0 0.0 1.0	360	1.0 1.0 1.0	95.8 0.0 0.0	0.0 0.0 0.0	1.0 1.0 1.0	95.8 0.0 0.0	0.0 152.8	0.0 360	1.0 1.0 1.0	95.8 0.0 0.0	0.0 0.0 0.0
1056	NW_000a	0.0 0.0 0.0	0.0 0.0 0.0	360	0.0 0.0 0.0	23.8 0.0 0.0	0.0 0.0 0.0	0.0 0.0 0.0	18.1 0.0 0.2	0.2 83.2	5.6 360	1.0 1.0 1.0	95.8 0.0 0.0	0.0 0.0 0.0
1057	NW_006a	0.066 0.066 0.066	0.066 0.0 0.066	360	0.066 0.066 0.066	28.6 0.0 0.0	0.0 0.0 0.0	0.066 0.066 0.066	21.5 0.1 0.1	0.2 48.9	7.0 360	1.0 1.0 1.0	95.8 0.0 0.0	0.0 0.0 0.0
1058	NW_013a	0.133 0.133 0.133	0.133 0.0 0.133	360	0.133 0.133 0.133	33.4 0.0 0.0	0.0 0.0 0.0	0.133 0.133 0.133	28.9 0.0 -0.7	0.7 268.2	4.4 360	1.0 1.0 1.0	95.8 0.0 0.0	0.0 0.0 0.0
1059	NW_020a	0.2 0.2 0.2	0.2 0.0 0.2	360	0.2 0.2 0.2	38.2 0.0 0.0	0.0 0.0 0.0	0.2 0.2 0.2	37.3 0.0 -1.1	1.1 267.2	1.4 360	1.0 1.0 1.0	95.8 0.0 0.0	0.0 0.0 0.0
1060	NW_026a	0.266 0.266 0.266	0.266 0.0 0.266	360	0.266 0.266 0.266	42.9 0.0 0.0	0.0 0.0 0.0	0.266 0.266 0.266	44.2 0.0 -1.1	1.1 269.1	1.7 360	1.0 1.0 1.0	95.8 0.0 0.0	0.0 0.0 0.0
1061	NW_033a	0.333 0.333 0.333	0.333 0.0 0.333	360	0.333 0.333 0.333	47.8 0.0 0.0	0.0 0.0 0.0	0.333 0.333 0.333	49.9 0.0 -0.8	0.8 274.5	2.3 360	1.0 1.0 1.0	95.8 0.0 0.0	0.0 0.0 0.0
1062	NW_040a	0.4 0.4 0.4	0.4 0.0 0.4	360	0.4 0.4 0.4	52.6 0.0 0.0	0.0 0.0 0.0	0.4 0.4 0.4	53.8 0.0 -0.9	0.9 273.2	1.4 360	1.0 1.0 1.0	95.8 0.0 0.0	0.0 0.0 0.0
1063	NW_046a	0.466 0.466 0.466	0.466 0.0 0.466	360	0.466 0.466 0.466	57.3 0.0 0.0	0.0 0.0 0.0	0.466 0.466 0.466	59.7 0.0 -1.1	1.1 268.9	2.6 360	1.0 1.0 1.0	95.8 0.0 0.0	0.0 0.0 0.0
1064	NW_053a	0.533 0.533 0.533	0.533 0.0 0.533	360	0.533 0.533 0.533	62.2 0.0 0.0	0.0 0.0 0.0	0.533 0.533 0.533	65.4 0.0 -0.9	0.9 273.1	3.3 360	1.0 1.0 1.0	95.8 0.0 0.0	0.0 0.0 0.0
1065	NW_060a	0.6 0.6 0.6	0.6 0.0 0.6	360	0.6 0.6 0.6	67.0 0.0 0.0	0.0 0.0 0.0	0.6 0.6 0.6	70.2 0.0 -0.8	0.8 268.8	3.2 360	1.0 1.0 1.0	95.8 0.0 0.0	0.0 0.0 0.0
1066	NW_066a	0.666 0.666 0.666	0.666 0.0 0.666	360	0.666 0.666 0.666	71.7 0.0 0.0	0.0 0.0 0.0	0.666 0.666 0.666	75.5 0.0 -0.7	0.7 271.9	3.8 360	1.0 1.0 1.0	95.8 0.0 0.0	0.0 0.0 0.0
1067	NW_073a	0.734 0.734 0.734	0.734 0.0 0.734	360	0.734 0.734 0.734	76.6 0.0 0.0	0.0 0.0 0.0	0.734 0.734 0.734	80.8 0.0 -0.4	0.4 265.0	4.1 360	1.0 1.0 1.0	95.8 0.0 0.0	0.0 0.0 0.0
1068	NW_080a	0.8 0.8 0.8	0.8 0.0 0.8	360	0.8 0.8 0.8	81.4 0.0 0.0	0.0 0.0 0.0	0.8 0.8 0.8	85.3 0.0 -0.3	0.3 279.5	3.9 360	1.0 1.0 1.0	95.8 0.0 0.0	0.0 0.0 0.0
1069	NW_086a	0.866 0.866 0.866	0.866 0.0 0.866	360	0.866 0.866 0.866	86.1 0.0 0.0	0.0 0.0 0.0	0.866 0.866 0.866	90.2 0.0 0.0	0.0 252.2	4.0 360	1.0 1.0 1.0	95.8 0.0 0.0	0.0 0.0 0.0
1070	NW_093a	0.933 0.933 0.933	0.933 0.0 0.933	360	0.933 0.933 0.933	91.0 0.0 0.0	0.0 0.0 0.0	0.933 0.933 0.933	94.2 0.0 -0.2	0.2 289.2	3.2 360	1.0 1.0 1.0	95.8 0.0 0.0	0.0 0.0 0.0
1071	NW_100a	1.0 1.0 1.0	1.0 0.0 1.0	360	1.0 1.0 1.0	95.8 0.0 0.0	0.0 0.0 0.0	1.0 1.0 1.0	95.8 0.0 0.0	0.1 331.9	0.1 360	1.0 1.0 1.0	95.8 0.0 0.0	0.0 0.0 0.0
1072	NW_000a	0.0 0.0 0.0	0.0 0.0 0.0	360	0.0 0.0 0.0	23.8 0.0 0.0	0.0 0.0 0.0	0.0 0.0 0.0	19.2 0.1 0.2	0.2 58.1	4.6 360	1.0 1.0 1.0	95.8 0.0 0.0	0.0 0.0 0.0
1073	NW_100a	1.0 1.0 1.0	1.0 0.0 1.0	360	1.0 1.0 1.0	95.8 0.0 0.0	0.0 0.0 0.0	1.0 1.0 1.0	95.7 0.0 -0.2	0.2 284.6	0.2 360	1.0 1.0 1.0	95.8 0.0 0.0	0.0 0.0 0.0
1074	R00Y_100_100a	1.0 0.0 0.0	1.0 1.0 0.5	390	1.0 0.0 0.0	47.5 57.2 37.8	68.6 33.4	1.0 0.0 0.0	47.0 56.3 40.2	69.2 35.5 2.6	389	1.0 0.0 0.0	47.5 57.2 37.8	68.6 33.4
1075	G50B_100_100a	0.0 1.0 1.0	1.0 1.0 0.5	210	0.0 1.0 1.0	53.1 -30.0 -43.1	52.5 235.1	0.0 1.0 1.0	54.9 -30.4 -42.0	51.8 234.0 2.1	210	0.0 1.0 1.0	53.1 -30.0 -43.1	52.5 235.1
1076	Y00G_100_100a	1.0 1.0 0.0	1.0 1.0 0.5	90	1.0 1.0 0.0	91.5 -15.8 84.6	86.1 100.5	1.0 1.0 0.0	91.5 -16.0 86.1	87.6 100.5 1.5	89	1.0 1.0 0.0	91.5 -15.8 84.6	86.1 100.5
1077	B00R_100_100a	0.0 0.0 1.0	1.0 1.0 0.5	270	0.0 0.0 1.0	32.5 16.9 -44.6	47.7 290.8	0.0 0.0 1.0	30.7 21.3 -44.1	49.0 295.7 4.7	270	0.0 0.0 1.0	32.5 16.9 -44.6	47.7 290.8
1078	G00B_100_100a	0.0 1.0 0.0	1.0 1.0 0.5	150	0.0 1.0 0.0	54.3 -67.6 30.8	74.3 155.5	0.0 1.0 0.0	54.6 -69.2 33.1	76.7 154.3 2.8	149	0.0 1.0 0.0	54.3 -67.6 30.8	74.3 155.5
1079	B50R_100_100a	1.0 0.0 1.0	1.0 1.0 0.5	330	1.0 0.0 1.0	48.1 65.4 -12.7	66.6 348.9	1.0 0.0 1.0	48.3 66.3 -13.8	67.7 348.1 1.4	330	1.0 0.0 1.0	48.1 65.4 -12.7	66.6 348.9

delta E\* = 3.0

TUB registrering: 20150701-PN79/PN79L0NA.TXT /.PS  
 anvendelse for måling av laserprinter output, separasjon cmyn6 (CMYK)  
 TUB-material: code=rha4ta

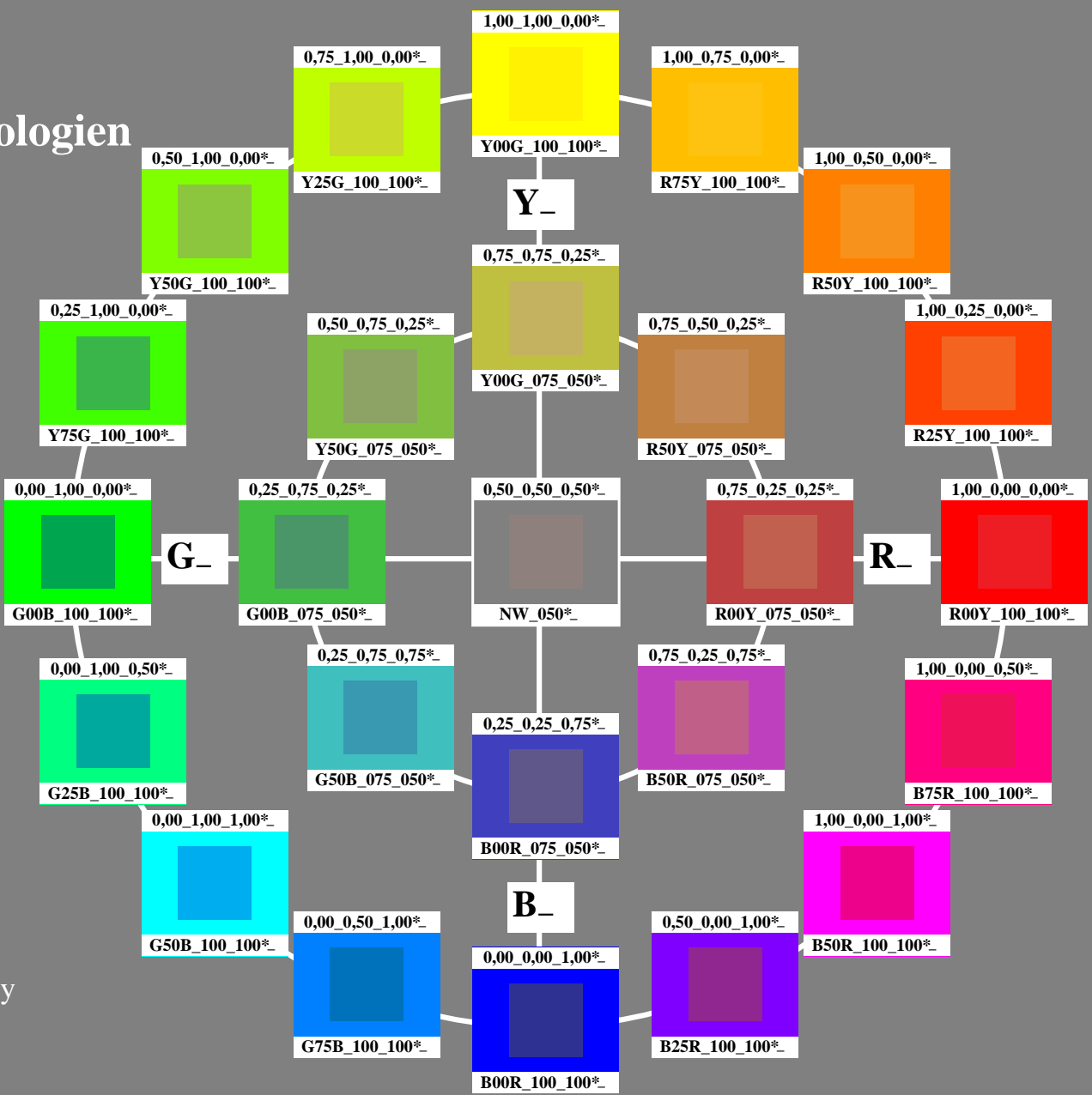


# Farge og Fargesyn Elementærfarger i Fargeinformasjonsteknologien

Author: Prof. Dr. Klaus Richter

25 standard farge for D65  
fargetonesirkel: 16 eller 8 trinns  
standard display sRGB  
rgb data:  $rgb^*_e$  (top)  
elementærfargetoner  $H^*$ , briljans  $I^*$ ,  
kulørthet  $C^*$ :  $HIC^*_e$  (bottom)

Special print for the exhibition  
Farge og Fargesyn  
Section Lighting Technology  
of the Berlin University of Technology  
Einsteinufer 19, D-10587 Berlin  
se: <http://www.li.tu-berlin.de>  
og <http://130.149.60.45/~farbmetrik>  
og <http://130.149.60.45/~farbmetrik>

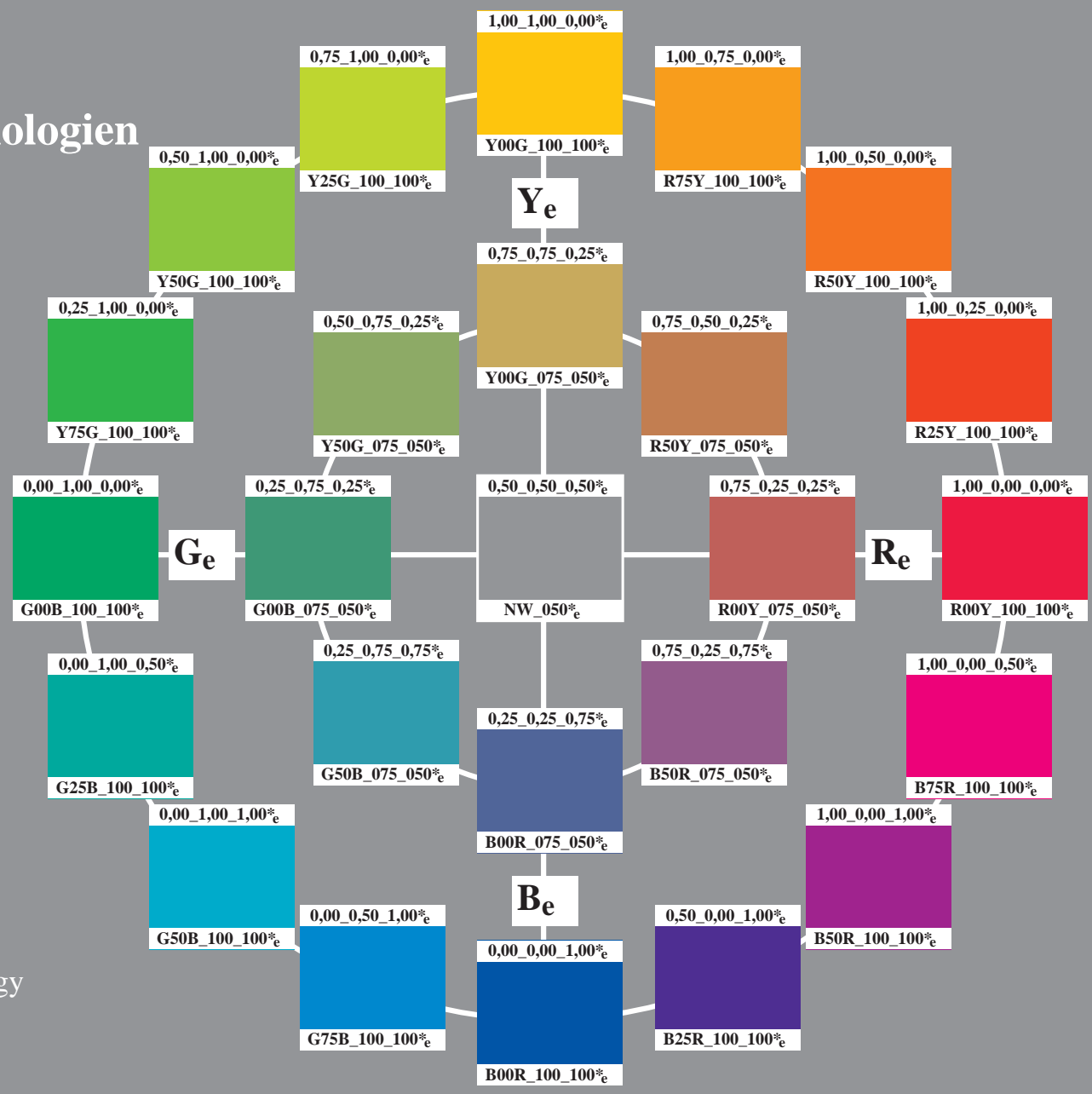


# Farge og Fargesyn Elementærfarger i Fargeinformasjonsteknologien

Author: Prof. Dr. Klaus Richter

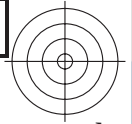
25 standard farge for D65  
fargetonesirkel: 16 eller 8 trinns  
standard display sRGB  
rgb data:  $rgb*_e$  (top)  
elementærfargetoner  $H^*$ , briljans  $I^*$ ,  
kulørthet  $C^*$ :  $HIC*_e$  (bottom)

Special print for the exhibition  
Farge og Fargesyn  
Section Lighting Technology  
of the Berlin University of Technology  
Einsteinufer 19, D-10587 Berlin  
se: <http://www.li.tu-berlin.de>  
og <http://130.149.60.45/~farbmetrik>  
og <http://130.149.60.45/~farbmetrik>



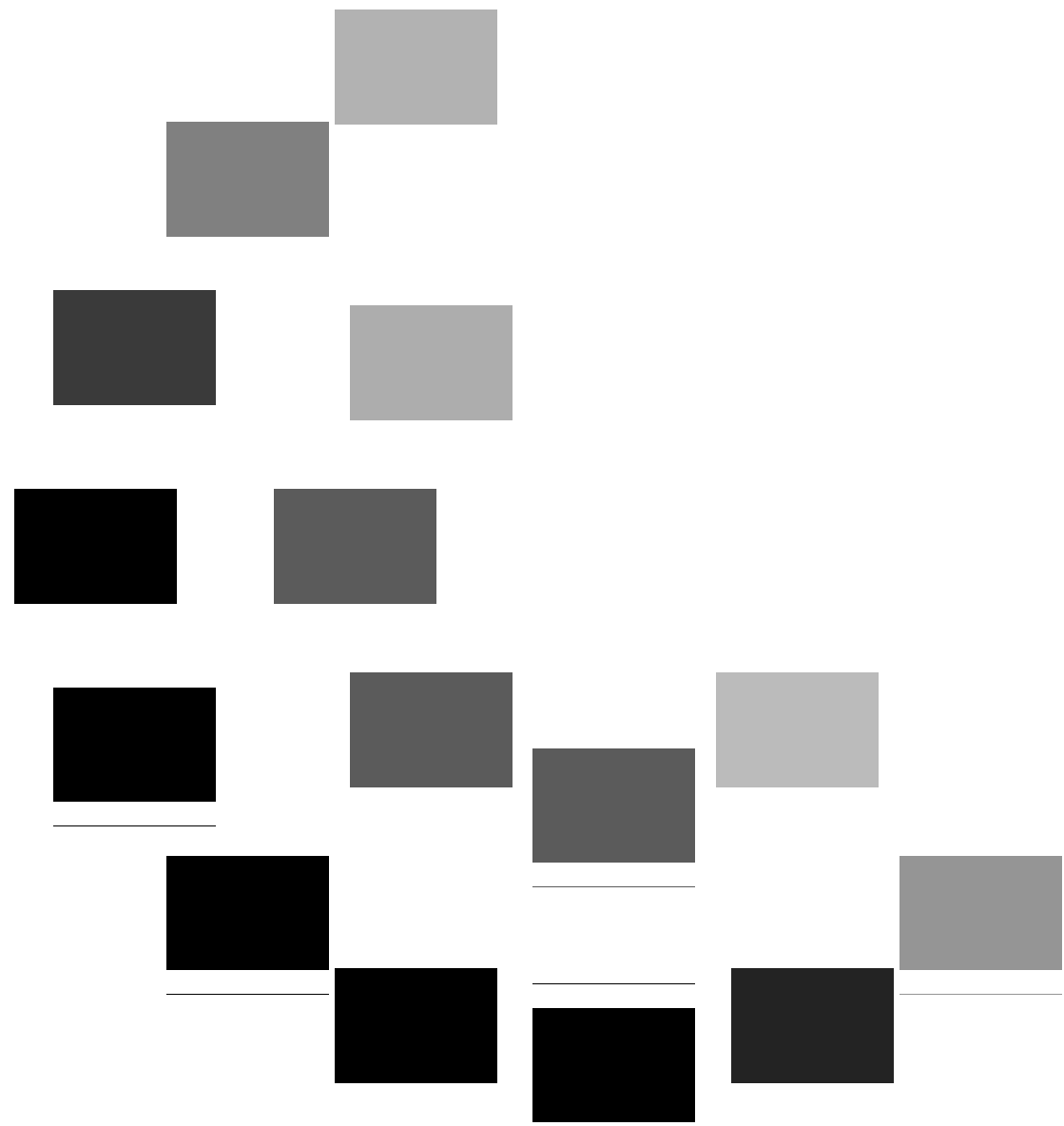
se lignende filer: <http://130.149.60.45/~farbmetrik/PN79/PN79LONA.TXT>  
teknisk informasjon: <http://www.ps.bam.de> eller <http://130.149.60.45/~farbmetrik>

TUB registrering: 20150701-PN79/PN79LONA.TXT /PS  
anvendelse for måling av laserprinter output, separasjon cmyn6 (CMYK)  
TUB-material: code=rh4ta

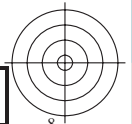
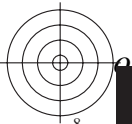


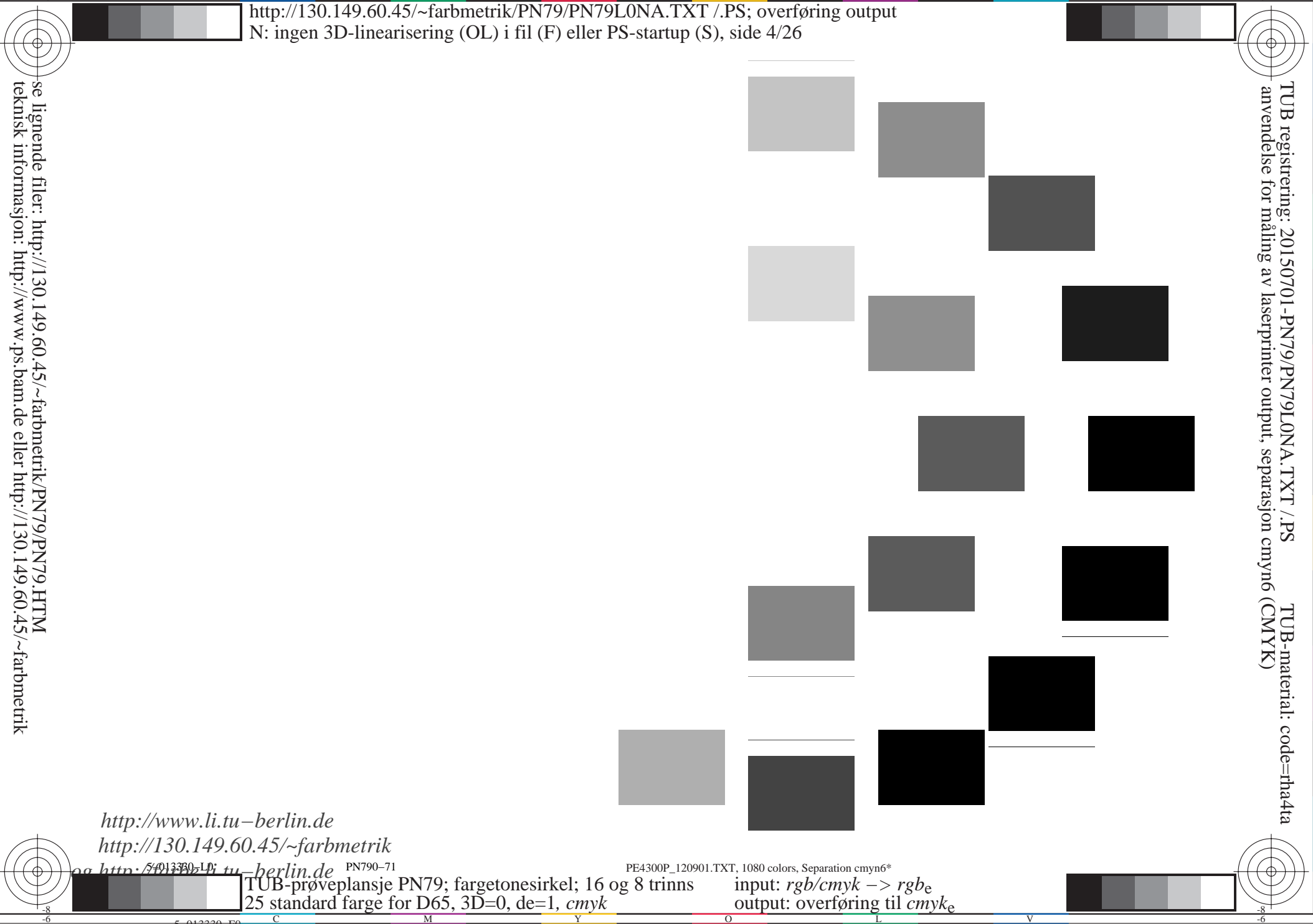
se lignende filer: <http://130.149.60.45/~farbmetrik/PN79/PN79.HTM>  
teknisk informasjon: <http://www.ps.bam.de> eller <http://130.149.60.45/~farbmetrik>

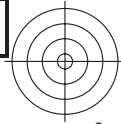
TUB registrering: 20150701-PN79/PN79L0NA.TXT /.PS TUB-material: code=rha4ta  
anvendelse for måling av laserprinter output, separasjon cmyk6 (CMYK)



<http://www.li.tu-berlin.de>  
<http://130.149.60.45/~farbmetrik>

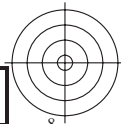
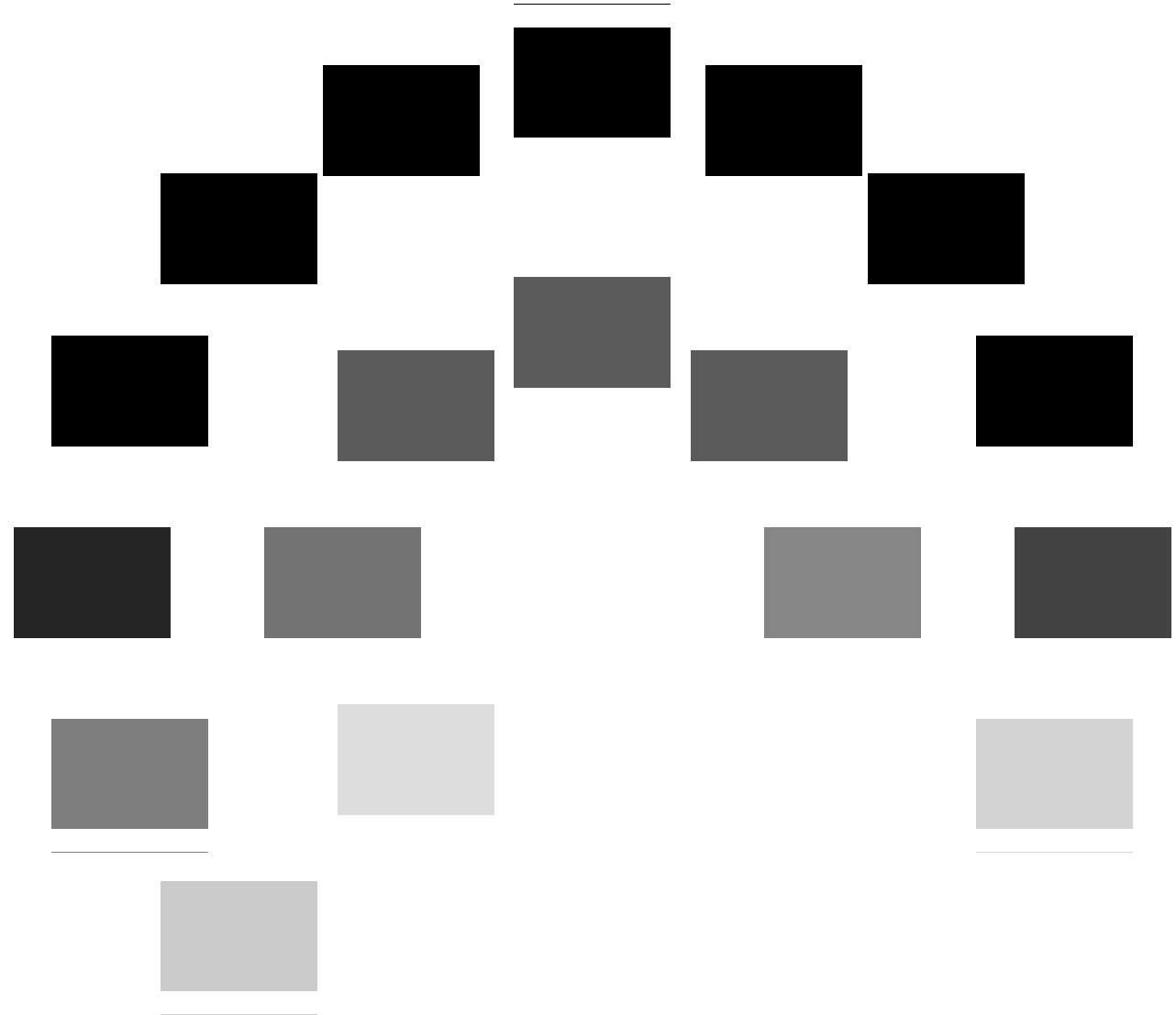






se lignende filer: <http://130.149.60.45/~farbmetrik/PN79/PN79.HTM>  
teknisk informasjon: <http://www.ps.bam.de> eller <http://130.149.60.45/~farbmetrik>

TUB registrering: 20150701-PN79/PN79L0NA.TXT /.PS TUB-material: code=rha4ta  
anvendelse for måling av laserprinter output, separasjon cmyk6 (CMYK)

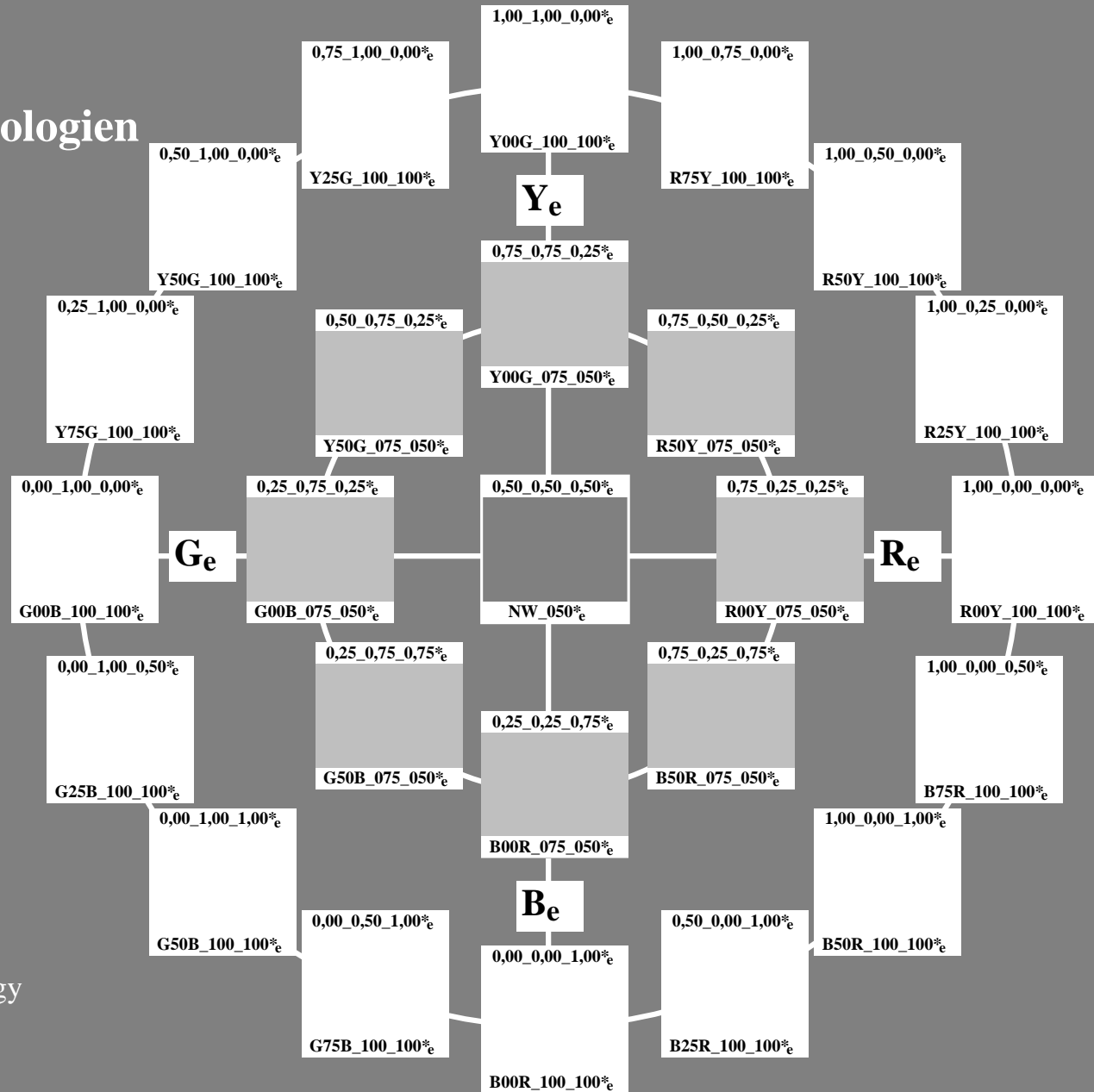


# Farge og Fargesyn Elementærfarger i Fargeinformasjonsteknologien

Author: Prof. Dr. Klaus Richter

25 standard farge for D65  
fargetonesirkel: 16 eller 8 trinns  
standard display *sRGB*  
*rgb* data: *rgb*\*<sub>e</sub> (top)  
elementærfargetoner *H*\*<sub>e</sub>, briljans *I*\*<sub>e</sub>,  
kulørthet *C*\*<sub>e</sub>: *HIC*\*<sub>e</sub> (bottom)

Special print for the exhibition  
Farge og Fargesyn  
Section Lighting Technology  
of the Berlin University of Technology  
Einsteinufer 19, D-10587 Berlin  
se: <http://www.li.tu-berlin.de>  
og <http://130.149.60.45/~farbmetrik>



TUB registrering: 20150701-PN79/PN79L0NA.TXT /PS  
anvendelse for måling av laserprinter output, separasjon *cmyn6* (CMYK)  
TUB-material: code=rh4ta



# Farge og Fargesyn Elementærfarger i Fargeinformasjonsteknologien

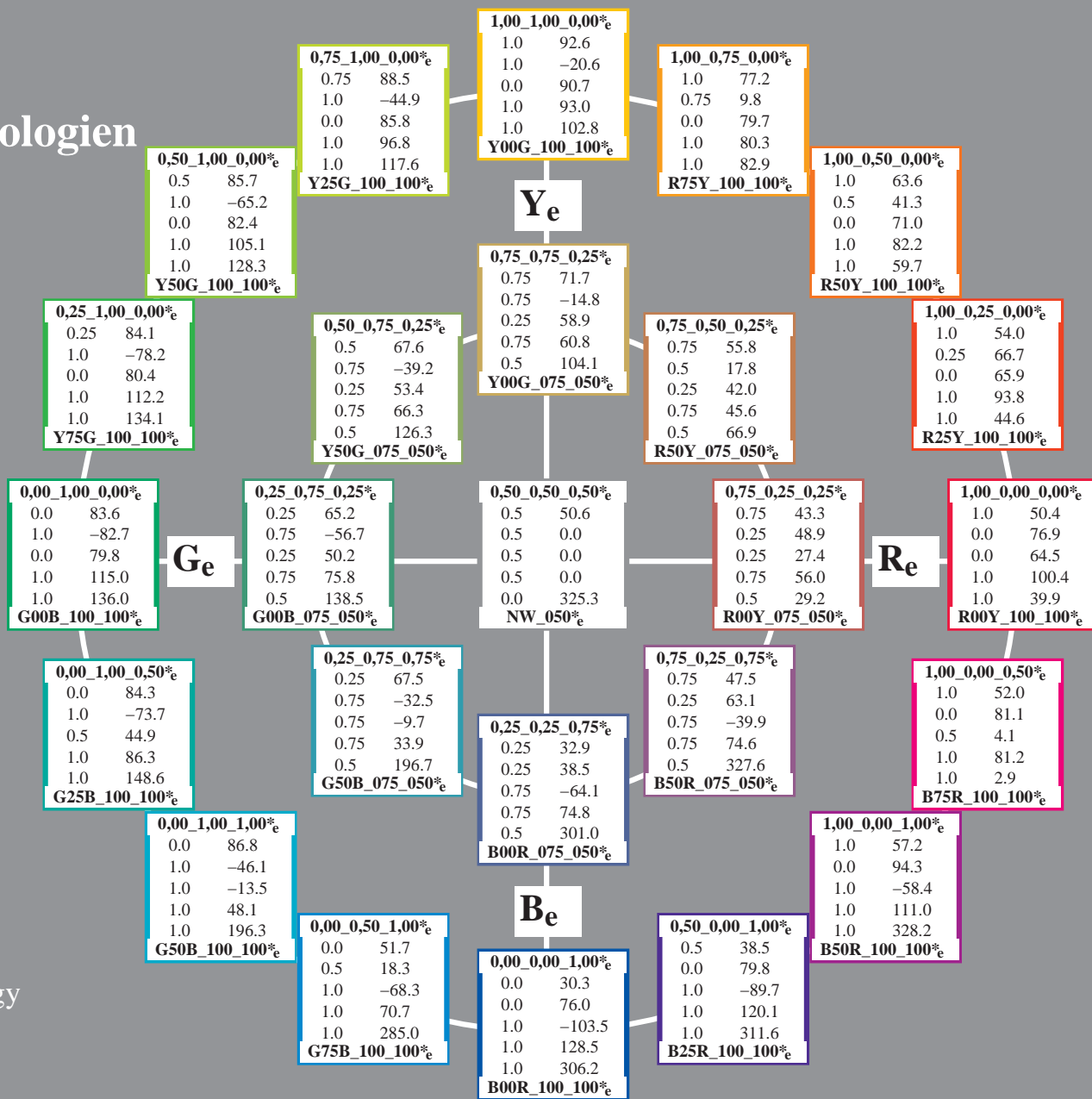
Author: Prof. Dr. Klaus Richter

25 standard farge for D65  
 fargetonesirkel: 16 eller 8 trinns  
 standard display *sRGB*  
*rgb* data: *rgb*\*<sub>e</sub> (top)  
 elementærfargetoner *H*\*<sub>e</sub>, briljans *I*\*<sub>e</sub>,  
 kulørthet *C*\*<sub>e</sub>; *HIC*\*<sub>e</sub> (bottom)  
 colour code:  
*rgbicd*; *LabCh*\*<sub>e</sub>'*d*

Special print for the exhibition  
 Farge og Fargesyn  
 Section Lighting Technology  
 of the Berlin University of Technology  
 Einsteinufer 19, D-10587 Berlin  
 se: <http://www.li.tu-berlin.de>  
 og <http://130.149.60.45/~farbmetrik>  
 og <http://130.149.60.45/~farbmetrik>

se lignende filer: <http://130.149.60.45/~farbmetrik/PN79/PN79LONA.TXT> / .PS  
 teknisk informasjon: <http://www.ps.bam.de> eller <http://130.149.60.45/~farbmetrik>

TUB registrering: 20150701-PN79/PN79LONA.TXT / .PS  
 anvendelse for måling av laserprinter output, separasjon cmyn6 (CMYK)  
 TUB-material: code=rh4ta

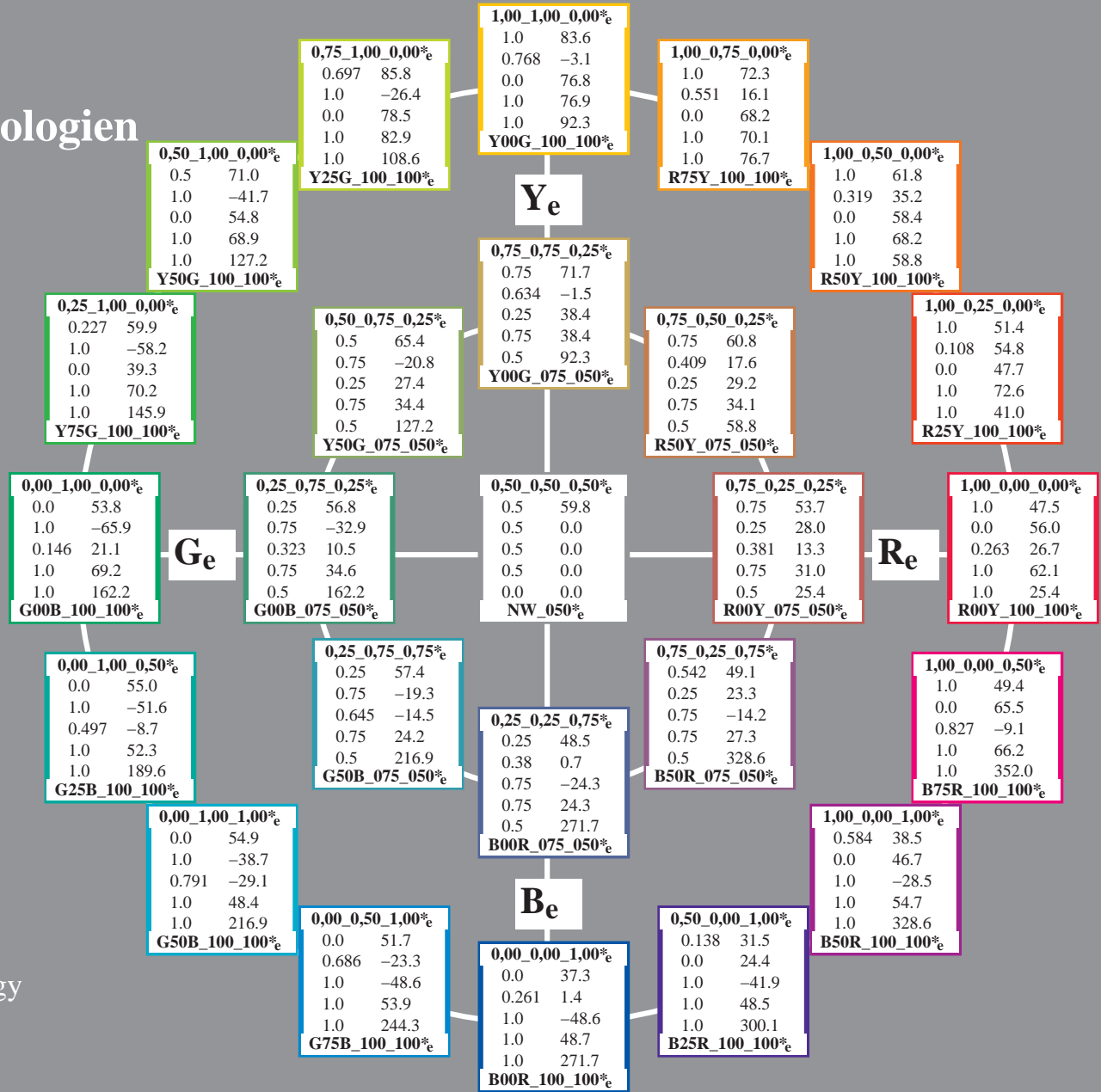


# Farge og Fargesyn Elementærfarger i Fargeinformasjonsteknologien

Author: Prof. Dr. Klaus Richter

25 standard farge for D65  
 fargetonesirkel: 16 eller 8 trinns  
 standard display *sRGB*  
*rgb* data:  $rgb^*_e$  (top)  
 elementærfargetoner  $H^*$ , briljans  $I^*$ ,  
 kulørthet  $C^*$ :  $HIC^*_e$  (bottom)  
 colour code:  
 $rgbic^*_e$ ;  $LabCh^*_e$

Special print for the exhibition  
 Farge og Fargesyn  
 Section Lighting Technology  
 of the Berlin University of Technology  
 Einsteinufer 19, D-10587 Berlin  
 se: <http://www.li.tu-berlin.de>  
 og <http://130.149.60.45/~farbmetrik>  
 og <http://130.149.60.45/~farbmetrik>



se lignende filer: <http://130.149.60.45/~farbmetrik/PN79/PN79L0NA.TXT>  
 teknisk informasjon: <http://www.ps.bam.de> eller <http://130.149.60.45/~farbmetrik>

# Farge og Fargesyn Elementærfarger i Fargeinformasjonsteknologien

Author: Prof. Dr. Klaus Richter

25 standard farge for D65

fargetonesirkel: 16 eller 8 trinns

standard display *sRGB*

*rgb* data: *rgb*\*<sub>e</sub> (top)

elementærfargetoner *H*\*, briljans *I*\*

kulørthet *C*\*: *HIC*\*<sub>e</sub> (bottom)

colour code:

*rgbic*\*<sub>d</sub>; *rgbic*\*<sub>e</sub>

Special print for the exhibition

Farge og Fargesyn

Section Lighting Technology

of the Berlin University of Technology

Einsteinufer 19, D-10587 Berlin

se: <http://www.li.tu-berlin.de>

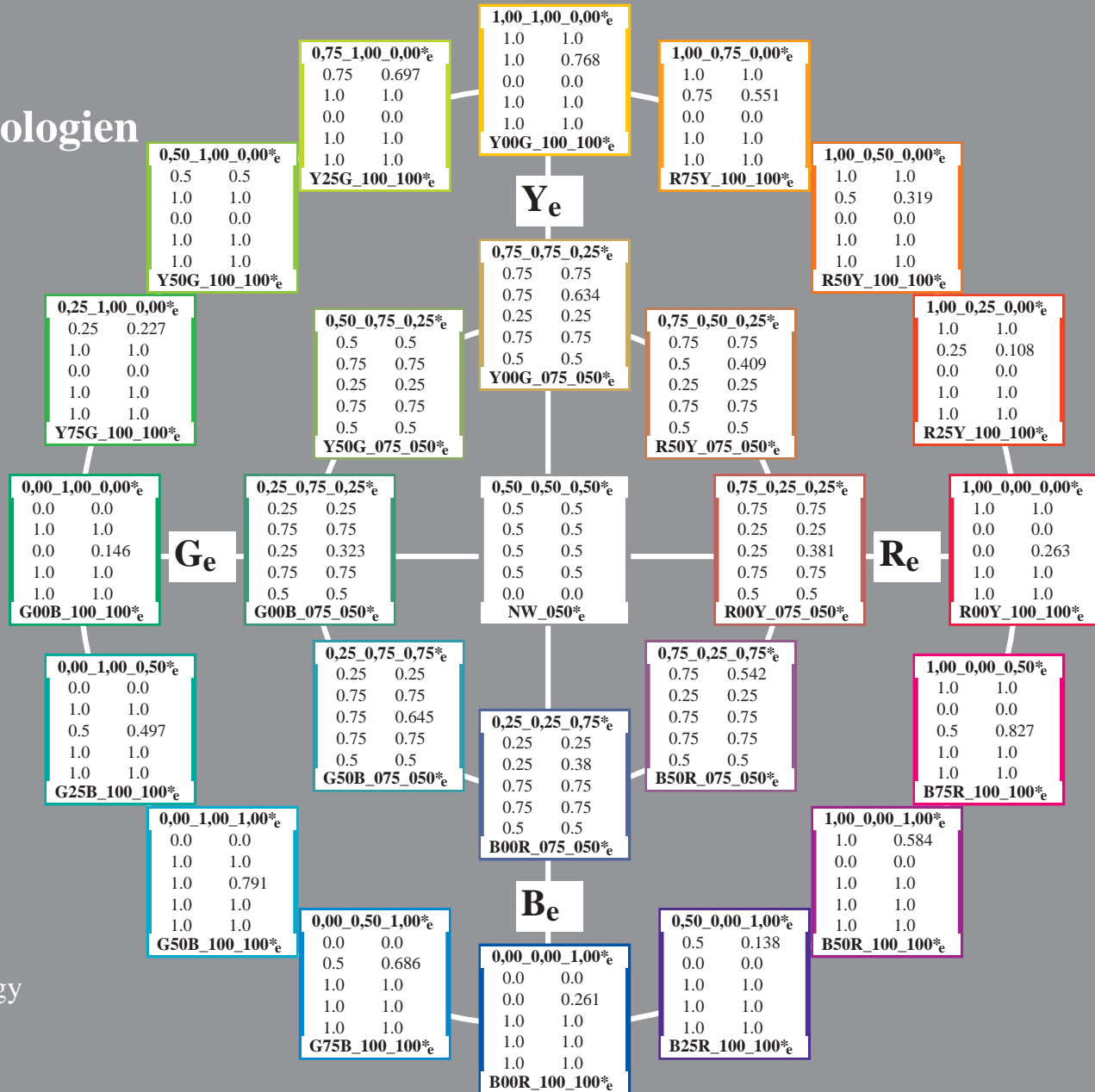
og <http://130.149.60.45/~farbmetrik>

og <http://130.149.60.45/~farbmetrik>

PN790-71

TUB-prøveplansje PN79; fargetonesirkel; 16 og 8 trinns  
 25 standard farge for D65, 3D=0, de=1, *cmYk*

input: *rgb/cmyk* -> *rgb*<sub>e</sub>  
 output: overføring til *cmYk*<sub>e</sub>



# Farge og Fargesyn Elementærfarger i Fargeinformasjonsteknologien

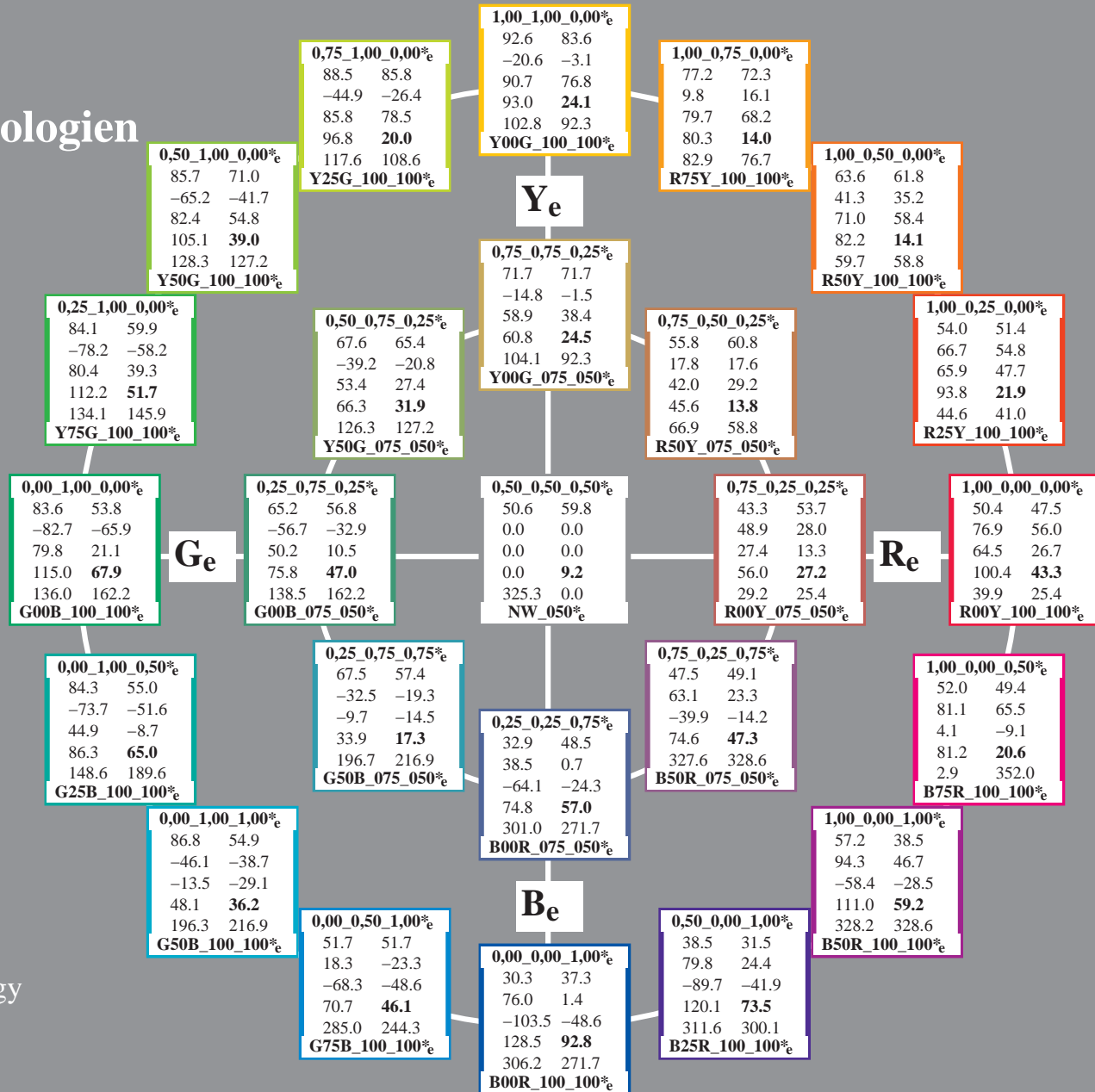
Author: Prof. Dr. Klaus Richter

25 standard farge for D65  
 fargetonesirkel: 16 eller 8 trinns  
 standard display *sRGB*  
*rgb* data:  $rgb*_e$  (top)  
 elementærfargetoner  $H^*$ , briljans  $I^*$ ,  
 kulørthet  $C^*$ :  $HIC*_e$  (bottom)  
 colour code:  
 $LabCh*_d; Lab*/DE*/h*_e$

Special print for the exhibition  
 Farge og Fargesyn  
 Section Lighting Technology  
 of the Berlin University of Technology  
 Einsteinufer 19, D-10587 Berlin  
 se: <http://www.li.tu-berlin.de>  
 og <http://130.149.60.45/~farbmetrik>  
 og <http://130.149.60.45/~farbmetrik>

TUB-prøveplansje PN79; fargetonesirkel; 16 og 8 trinns  
 25 standard farge for D65, 3D=0, de=1, *cmYk*

input:  $rgb/cmyk \rightarrow rgb_e$   
 output: overføring til  $cmyk_e$



se lignende filer: <http://130.149.60.45/~farbmetrik/PN79/PN79LONA.TXT> /PS  
 teknisk informasjon: <http://www.ps.bam.de> eller <http://130.149.60.45/~farbmetrik>

TUB registrering: 20150701-PN79/PN79LONA.TXT /PS  
 anvendelse for måling av laserprinter output, separasjon *cmYn6* (CMYK)  
 TUB-material: code=rh4ta

Table with columns: n/j, HIC\*Fe, rgb\*Fe, icf\*Fe, hsi\*Fe, rgb\*Fe, LabCh\*Fe, rgb\*Fe, LabCh\*Fe, DE\*Fe, hsiMe, rgb\*Me, LabCh\*Me. Rows include various color and grayscale patches like R00Y, Y00G, G00C, etc.

delta E\* = 14.2

teknisk informasjon: http://www.ps.bam.de eller http://130.149.60.45/~farbmetrik/PN79/PN79.HTM

TUB registrering: 20150701-PN79/PN79L0NA.TXT /.PS anvendelse for måling av laserprinter output, separasjon cmyn6 (CMYK) TUB-material: code=rhata4ta



5-0131030-F0

PN790-7N, 11/26-F

PE4300P\_120901.TXT, 1080 colors, Separation cmyn6\*

TUB-prøveplansje PN79; fargetonesirkel; 16 og 8 trinn farger og fargeavstander, ΔE\*, 3D=0, de=1, cmyk

input: rgb/cmyk -> rgb\_e output: overføring til cmyk\_e

5-0131030-F0

5-0131030-F0









se lignende filer: <http://130.149.60.45/~farbmetrik/PN79/PN79.HTM>  
teknisk informasjon: <http://www.ps.bam.de> eller <http://130.149.60.45/~farbmetrik>

TUB registrering: 20150701-PN79/PN79L0NA.TXT / .PS  
anvendelse for måling av laserprinter output, separasjon cmyn6 (CMYK) TUB-material: code=rhata4

Table with columns for various color and density metrics: n, HIC\*Fe, rgb\*Fe, icf\*Fe, hsi\*Fe, rgb\*\*Fe, LabCh\*Fe, LabCh\*\*Fe, DE\*Fe, hsiMe, rgb\*\*Me, LabCh\*\*Me. The table contains 40 rows of data for different color channels and density levels.

delta E\*<sub>ab</sub> = 11.0

TUB-prøveplansje PN79; fargetonesirkel; 16 og 8 trinn  
farger og fargeavstander, ΔE\*, 3D=0, de=1, cmYK  
input: *rgb/cmyk* → *rgb*  
output: overføring til *cmYk*



N: ingen 3D-linearisering (OL) i fil (F) eller PS-startup (S), side 17/26

se lignende filer: http://130.149.60.45/~farbmetrik/PN79/PN79.HTM  
teknisk informasjon: http://www.ps.bam.de eller http://130.149.60.45/~farbmetrik

Table with columns for color channels (n, HIC\*Fe, rGb\*Fe, icT\*Fe, hsi\*Fe, rGb\*Fe, LabCh\*Fe) and rows of color calibration data (e.g., 324 R00Y\_050\_050).

TUB-prøveplansje PN79; fargetonesirkel; 16 og 8 trinn  
farger og fargeavstander, ΔE\*, 3D=0, de=1, cmyk

input: rgb/cmyk -> rgbe  
output: overføring til cmyke

TUB registrering: 20150701-PN79/PN79L0NA.TXT /PS  
TUB-material: code=rhata4ta  
anvendelse for måling av laserprinter output, separasjon cmyn6 (CMYK)

Table with columns for color channels (HIC\*Fe, rgb\*Fe, icf\*Fe, hsi\*Fe, rgb\*Fe, LabCh\*Fe) and rows for various color patches (e.g., R00Y\_062\_062a, R31Y\_062\_062a, etc.)

5-0131730-FO

PN790-7N, 18/26-F

PE4300P\_120901.TXT, 1080 colors, Separation cmyrn6\*

delta E\* = 11.3

TUB-prøveplansje PN79; fargetonesirkel; 16 og 8 trinn farger og fargeavstander, ΔE\*, 3D=0, de=1, cmyk

input: rgb/cmyk -> rgb output: overføring til cmyke

teknisk informasjon: http://130.149.60.45/~farbmetrik/PN79/PN79L0NA.TXT / .PS http://www.ps.bam.de eller http://130.149.60.45/~farbmetrik

TUB registrering: 20150701-PN79/PN79L0NA.TXT / .PS anvendelse for måling av laserprinter output, separasjon cmyrn6 (CMYK) TUB-material: code=rhata



Table with 28 columns representing color channels and values ranging from 0.00 to 1.00. Columns include HIC\*Fe, rgb\*Fe, icl\*Fe, hsi\*Fe, rgbb\*Fe, LabCh\*Fe, DE\*Fe, hsiMe, rgb\*Me, LabCh\*Me, and delta E\* = 13.7.

se lignende filer: http://130.149.60.45/~farbmetrik/PN79/PN79.LONA.TXT /PS teknisk informasjon: http://www.ps.bam.de eller http://130.149.60.45/~farbmetrik

TUB registrering: 20150701-PN79/PN79LONA.TXT /PS anvendelse for måling av laserprinter output, separasjon cmykn6 (CMYK) TUB-material: code=thata

TUB-prøveplansje PN79; fargetonesirkel; 16 og 8 trinns farger og fargeavstander, ΔE\*, 3D=0, de=1, cmyk

input: rgb/cmyk -> rgb output: overføring til cmyke









Table with 19 columns (n, HIC\*Fe, rgb\*Fe, icf\*Fe, hsi\*Fe, rgb\*Fe, LabCh\*Fe, rgb\*Fe, LabCh\*Fe, DE\*Fe, hsi\*Me, rgb\*Me, LabCh\*Me) and 97 rows of color calibration data.

delta E\*94 = 10.5

5-0132330-F0

PN790-7N, 24/26-F

PE4300P\_120901.TXT, 1080 colors, Separation cmyrn6\*

TUB-prøveplansje PN79; fargetonesirkel; 16 og 8 trinns farger og fargeavstander, ΔE\*, 3D=0, de=1, cmyk

input: rgb/cmyk -> rgb\_e  
output: overføring til cmyk\_e

se lignende filer: http://130.149.60.45/~farbmetrik/PN79/PN79LONA.TXT / .PS  
teknisk informasjon: http://www.ps.bam.de eller http://130.149.60.45/~farbmetrik

TUB registrering: 20150701 -PN79/PN79LONA.TXT / .PS  
anvendelse for måling av laserprinter output, separasjon cmyrn6 (CMYK)

TUB-material: code=rhata

5-0132330-F0



se liggende filer: <http://130.149.60.45/~farbmetrik/PN79/PN79.HTM>  
 teknisk informasjon: <http://www.ps.bam.de> eller <http://130.149.60.45/~farbmetrik>

n	HIC*Fe	rgb_Fe	icf_Fe	hsi_Fe	rgb*Fe	LabCh*Fe	rgb*Fe	LabCh*Fe	DE*Fe	hsiMe	rgb*Me	LabCh*Me			
1053	NW_086e	0.866 0.866	0.866 0.866	0.0 0.866	360 0.866	0.866 0.866 0.866	86.1 0.0 0.0	0.0 0.0 0.0	0.866 0.866	0.866 90.6	0.0 -0.1 0.1	266.5 4.4 360	1.0 1.0 1.0	95.8 0.0 0.0	0.0 0.0 0.0
1054	NW_093e	0.933 0.933	0.933 0.933	0.0 0.933	360 0.933	0.933 0.933 0.933	91.0 0.0 0.0	0.0 0.0 0.0	0.933 0.933	0.933 94.4	0.0 -0.2 0.2	278.1 3.4 360	1.0 1.0 1.0	95.8 0.0 0.0	0.0 0.0 0.0
1055	NW_100e	1.0 1.0 1.0	1.0 1.0 1.0	1.0 1.0	360 1.0	1.0 1.0 1.0	95.8 0.0 0.0	0.0 0.0 0.0	1.0 1.0 1.0	95.8 0.0	0.0 0.0 0.0	152.8 0.0 360	1.0 1.0 1.0	95.8 0.0 0.0	0.0 0.0 0.0
1056	NW_000e	0.0 0.0 0.0	0.0 0.0 0.0	0.0 0.0	360 0.0	0.0 0.0 0.0	23.8 0.0 0.0	0.0 0.0 0.0	0.0 0.0 0.0	18.1 0.0	0.2 0.2 0.2	83.2 5.6 360	1.0 1.0 1.0	95.8 0.0 0.0	0.0 0.0 0.0
1057	NW_006e	0.066 0.066	0.066 0.066	0.066 0.066	360 0.066	0.066 0.066 0.066	28.6 0.0 0.0	0.0 0.0 0.0	0.066 0.066	0.066 21.5	0.1 0.1 0.2	48.9 7.0 360	1.0 1.0 1.0	95.8 0.0 0.0	0.0 0.0 0.0
1058	NW_013e	0.133 0.133	0.133 0.133	0.133 0.133	360 0.133	0.133 0.133 0.133	33.4 0.0 0.0	0.0 0.0 0.0	0.133 0.133	0.133 28.9	0.0 -0.7 0.7	268.2 4.4 360	1.0 1.0 1.0	95.8 0.0 0.0	0.0 0.0 0.0
1059	NW_020e	0.2 0.2 0.2	0.2 0.2 0.2	0.2 0.2	360 0.2	0.2 0.2 0.2	38.2 0.0 0.0	0.0 0.0 0.0	0.2 0.2 0.2	37.3 0.0	1.1 1.1 1.1	267.2 1.4 360	1.0 1.0 1.0	95.8 0.0 0.0	0.0 0.0 0.0
1060	NW_026e	0.266 0.266	0.266 0.266	0.266 0.266	360 0.266	0.266 0.266 0.266	42.9 0.0 0.0	0.0 0.0 0.0	0.266 0.266	0.266 44.2	0.0 -1.1 1.1	269.1 1.7 360	1.0 1.0 1.0	95.8 0.0 0.0	0.0 0.0 0.0
1061	NW_033e	0.333 0.333	0.333 0.333	0.333 0.333	360 0.333	0.333 0.333 0.333	47.8 0.0 0.0	0.0 0.0 0.0	0.333 0.333	0.333 49.9	0.0 -0.8 0.8	274.5 2.3 360	1.0 1.0 1.0	95.8 0.0 0.0	0.0 0.0 0.0
1062	NW_040e	0.4 0.4 0.4	0.4 0.4 0.4	0.4 0.4	360 0.4	0.4 0.4 0.4	52.6 0.0 0.0	0.0 0.0 0.0	0.4 0.4 0.4	53.8 0.0	0.9 0.9 0.9	273.2 1.4 360	1.0 1.0 1.0	95.8 0.0 0.0	0.0 0.0 0.0
1063	NW_046e	0.466 0.466	0.466 0.466	0.466 0.466	360 0.466	0.466 0.466 0.466	57.3 0.0 0.0	0.0 0.0 0.0	0.466 0.466	0.466 59.7	0.0 -1.1 1.1	268.9 2.6 360	1.0 1.0 1.0	95.8 0.0 0.0	0.0 0.0 0.0
1064	NW_053e	0.533 0.533	0.533 0.533	0.533 0.533	360 0.533	0.533 0.533 0.533	62.2 0.0 0.0	0.0 0.0 0.0	0.533 0.533	0.533 65.4	0.0 -0.9 0.9	273.1 3.3 360	1.0 1.0 1.0	95.8 0.0 0.0	0.0 0.0 0.0
1065	NW_060e	0.6 0.6 0.6	0.6 0.6 0.6	0.6 0.6	360 0.6	0.6 0.6 0.6	67.0 0.0 0.0	0.0 0.0 0.0	0.6 0.6 0.6	70.2 0.0	0.8 0.8 0.8	268.8 3.2 360	1.0 1.0 1.0	95.8 0.0 0.0	0.0 0.0 0.0
1066	NW_066e	0.666 0.666	0.666 0.666	0.666 0.666	360 0.666	0.666 0.666 0.666	71.7 0.0 0.0	0.0 0.0 0.0	0.666 0.666	0.666 75.5	0.0 -0.7 0.7	271.9 3.8 360	1.0 1.0 1.0	95.8 0.0 0.0	0.0 0.0 0.0
1067	NW_073e	0.734 0.734	0.734 0.734	0.734 0.734	360 0.734	0.734 0.734 0.734	76.6 0.0 0.0	0.0 0.0 0.0	0.734 0.734	0.734 80.8	0.0 -0.4 0.4	265.0 4.1 360	1.0 1.0 1.0	95.8 0.0 0.0	0.0 0.0 0.0
1068	NW_080e	0.8 0.8 0.8	0.8 0.8 0.8	0.8 0.8	360 0.8	0.8 0.8 0.8	81.4 0.0 0.0	0.0 0.0 0.0	0.8 0.8 0.8	85.3 0.0	0.3 0.3 0.3	279.5 3.9 360	1.0 1.0 1.0	95.8 0.0 0.0	0.0 0.0 0.0
1069	NW_086e	0.866 0.866	0.866 0.866	0.866 0.866	360 0.866	0.866 0.866 0.866	86.1 0.0 0.0	0.0 0.0 0.0	0.866 0.866	0.866 90.2	0.0 0.0 0.0	252.2 4.0 360	1.0 1.0 1.0	95.8 0.0 0.0	0.0 0.0 0.0
1070	NW_093e	0.933 0.933	0.933 0.933	0.933 0.933	360 0.933	0.933 0.933 0.933	91.0 0.0 0.0	0.0 0.0 0.0	0.933 0.933	0.933 94.2	0.0 -0.2 0.2	289.2 3.2 360	1.0 1.0 1.0	95.8 0.0 0.0	0.0 0.0 0.0
1071	NW_100e	1.0 1.0 1.0	1.0 1.0 1.0	1.0 1.0	360 1.0	1.0 1.0 1.0	95.8 0.0 0.0	0.0 0.0 0.0	1.0 1.0 1.0	95.8 0.0	0.0 0.1 0.1	331.9 0.1 360	1.0 1.0 1.0	95.8 0.0 0.0	0.0 0.0 0.0
1072	NW_000e	0.0 0.0 0.0	0.0 0.0 0.0	0.0 0.0	360 0.0	0.0 0.0 0.0	23.8 0.0 0.0	0.0 0.0 0.0	0.0 0.0 0.0	19.2 0.1	0.2 0.2 0.2	58.1 4.6 360	1.0 1.0 1.0	95.8 0.0 0.0	0.0 0.0 0.0
1073	NW_100e	1.0 1.0 1.0	1.0 1.0 1.0	1.0 1.0	360 1.0	1.0 1.0 1.0	95.8 0.0 0.0	0.0 0.0 0.0	1.0 1.0 1.0	95.7 0.0	-0.2 0.2 0.2	284.6 0.2 360	1.0 1.0 1.0	95.8 0.0 0.0	0.0 0.0 0.0
1074	R00Y_100_100e	1.0 0.0 0.0	1.0 1.0 1.0	0.5 390	1.0 0.0	0.0 0.263 47.5	56.0 26.7 62.1	25.4	1.0 0.0 0.0	47.0 56.3	40.2 69.2 35.5	13.5 375	1.0 0.0 0.263	47.5 56.0	26.7 62.1 25.4
1075	G50B_100_100e	0.0 1.0 1.0	1.0 1.0 1.0	0.5 210	0.0 1.0	0.791 54.9	-38.7 -29.1 48.4	216.9	0.0 1.0 1.0	54.9 -30.4 -42.0	51.8 234.0 15.2	198	0.0 1.0 0.791	54.9 -38.7 -29.1	48.4 216.9
1076	Y00G_100_100e	1.0 1.0 0.0	1.0 1.0 0.5	90	1.0 0.768	0.0 83.6	-3.1 76.8 76.9	92.3	1.0 1.0 0.0	91.5 -16.0 86.1	87.6 100.5 17.8	77	1.0 0.768 0.0	83.6 -3.1 76.8	76.9 92.3
1077	B00R_100_100e	0.0 0.0 1.0	1.0 1.0 0.5	270	0.0 0.261	1.0 37.3	1.4 -48.6 48.7	271.7	0.0 0.0 1.0	30.7 21.3 -44.1	49.0 295.7 21.3	255	0.0 0.261 1.0	37.3 1.4 -48.6	48.7 271.7
1078	G00B_100_100e	0.0 1.0 0.0	1.0 1.0 0.5	150	0.0 1.0	0.146 53.8	-65.9 21.1 69.2	162.2	0.0 1.0 0.0	54.6 -69.2 33.1	76.7 154.3 12.4	157	0.0 1.0 0.146	53.8 -65.9 21.1	69.2 162.2
1079	B50R_100_100e	1.0 0.0 1.0	1.0 1.0 0.5	330	0.584 0.0	1.0 38.5	46.7 -28.5 54.7	328.6	1.0 0.0 1.0	48.3 66.3 -13.8	67.7 348.1 26.3	305	0.584 0.0 1.0	38.5 46.7 -28.5	54.7 328.6

delta E\* = 6.3

TUB registrering: 20150701-PN79/PN79LONA.TXT / .PS  
 anvendelse for måling av laserprinter output, separasjon cmyn6 (CMYK)  
 TUB-material: code=rh4ta