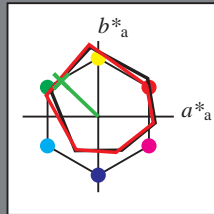


Input og output: Offset-Reflektiv-System ORS18a for relativ CIELAB fargetone  $h_{ab,a,rel} = h_{ab}/360 = 136/360 = 0.37$

Data for ethvert apparat (d) eller elementærfarge (e):

$HIC^*_d$   
fargetonetekst for fargene på denne siden:  
 $H^*_d = Y75G_d$   
trekantslyshet  $T^*$



ORS20a; adapterte (a) CIELAB data

navn	$L^*=L^*_a$	$a^*_a$	$b^*_a$	$C^*_{ab,a}$	$h^*_{ab,a}$
R <sub>d,Ma</sub>	47.3	63.8	41.2	76.0	32
Y <sub>d,Ma</sub>	88.3	-11.9	95.1	95.8	97
G <sub>d,Ma</sub>	51.9	-68.8	28.1	74.3	157
C <sub>d,Ma</sub>	58.3	-29.2	-43.7	52.6	236
B <sub>d,Ma</sub>	25.3	23.5	-47.3	52.8	296
M <sub>d,Ma</sub>	48.2	72.8	-8.5	73.3	353
N <sub>d,Ma</sub>	17.7	0.0	0.0	0.0	0
W <sub>d,Ma</sub>	95.4	0.0	0.0	0.0	0
R <sub>d,CIE</sub>	39.9	58.7	27.9	65.0	25
Y <sub>d,CIE</sub>	81.2	-2.8	71.5	71.6	92
G <sub>d,CIE</sub>	52.2	-42.4	13.6	44.5	162
B <sub>d,CIE</sub>	30.5	1.4	-46.4	46.4	271

Data for maksimalfarge (Ma):

LabCh<sub>d,Ma</sub>: 60 -48 46 67 136

$HIC^*_d, Ma$ : Y75G\_100\_100d

$rgbic^*_d, Ma$ :

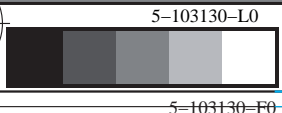
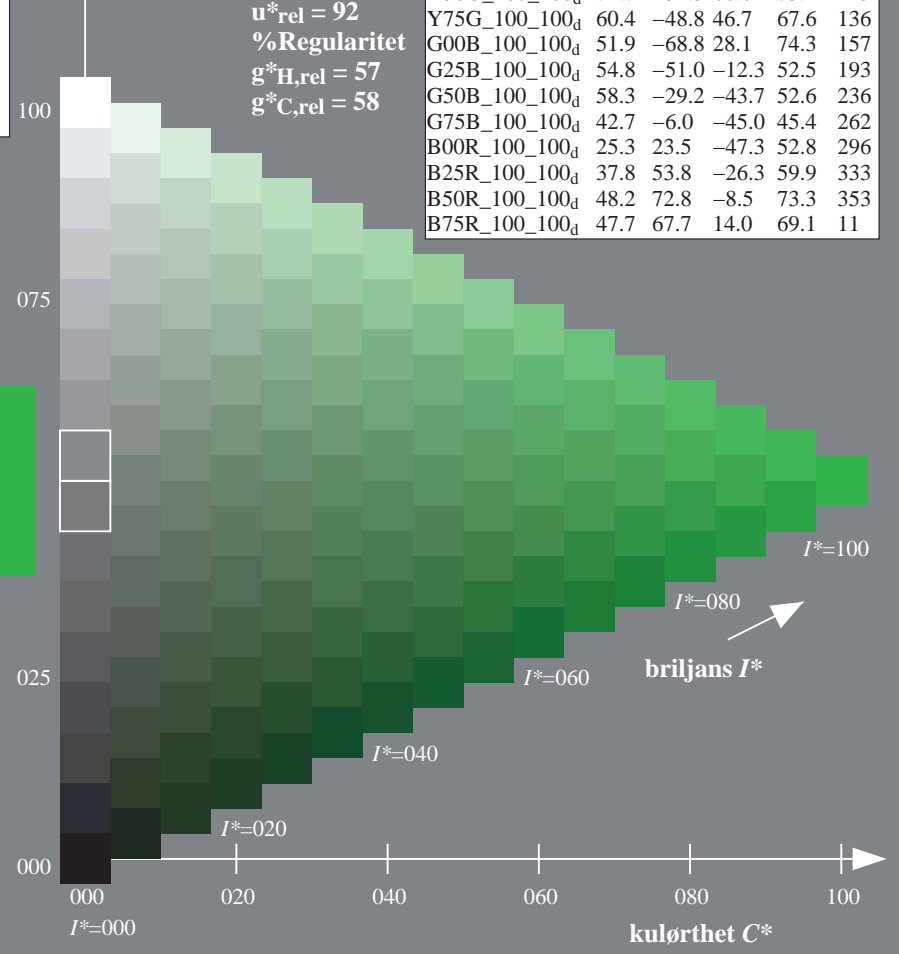
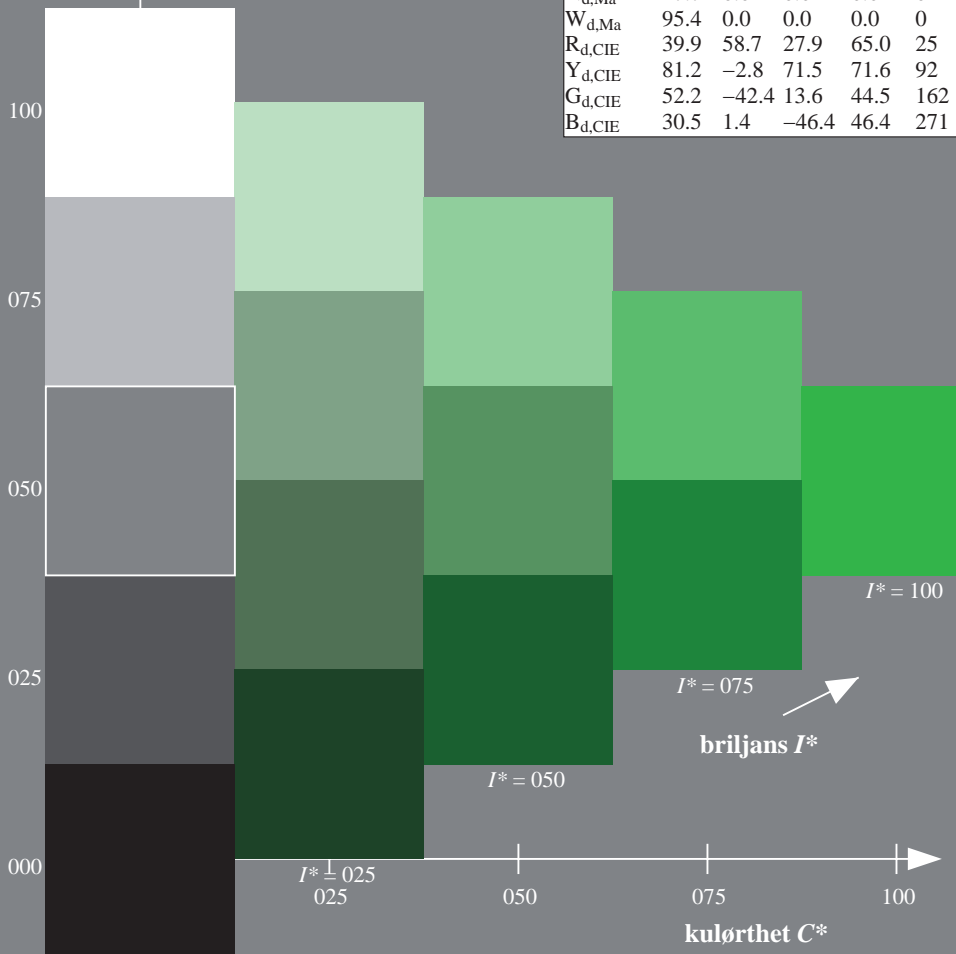
0.23 1.0 0.0 1.0 1.0

trekantslyshet  $T^*$

ORS20a; adapterte (a) CIELAB data

$H^*_d$	$L^*=L^*_a$	$a^*_a$	$b^*_a$	$C^*_{ab,a}$	$h^*_{ab,a}$
R00Y_100_100d	47.3	63.8	41.2	76.0	32
R25Y_100_100d	55.3	45.8	52.2	69.5	48
R50Y_100_100d	67.2	22.6	67.6	71.2	71
R75Y_100_100d	79.9	1.0	83.9	83.9	89
Y00G_100_100d	88.3	-11.9	95.1	95.8	97
Y25G_100_100d	83.3	-19.2	83.7	85.9	102
Y50G_100_100d	72.7	-31.3	66.0	73.1	115
Y75G_100_100d	60.4	-48.8	46.7	67.6	136
G00B_100_100d	51.9	-68.8	28.1	74.3	157
G25B_100_100d	54.8	-51.0	-12.3	52.5	193
G50B_100_100d	58.3	-29.2	-43.7	52.6	236
G75B_100_100d	42.7	-6.0	-45.0	45.4	262
B00R_100_100d	25.3	23.5	-47.3	52.8	296
B25R_100_100d	37.8	53.8	-26.3	59.9	333
B50R_100_100d	48.2	72.8	-8.5	73.3	353
B75R_100_100d	47.7	67.7	14.0	69.1	11

%Omfang  
 $u^*_{rel} = 92$   
%Regularitet  
 $g^*_{H,rel} = 57$   
 $g^*_{C,rel} = 58$



TUB-prøveplansje QN63; farbetoneplan:  $H^*_d=Y75G_d$   
prøveplansje infølge DIN 33872, 3D=1, de=0, cmyk\*

input: rgb/cmyk -> rgb<sub>dd</sub>  
output: 3D-linearisering til cmyk\*<sub>dd</sub>



se lignende filer: http://130.149.60.45/~farbmetrik/QN63/QN63.HTM  
teknisk informasjon: http://www.ps.bam.de eller http://130.149.60.45/~farbmetrik

TUB registrering: 20150701-QN63/QN63LOFP.PDF /PS  
anvendelse for måling av offsettrykk output, separasjon cmyk\* (CMYK)  
TUB-material: code=rhadata