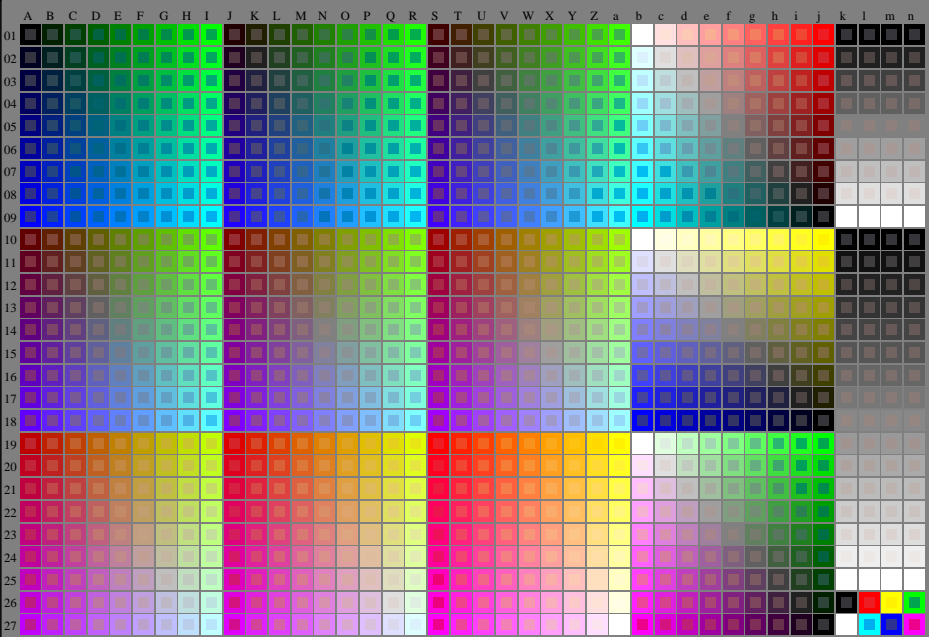


http://130.149.60.45/~farbmetrik/RE58/RE58LONI.TXT /PS; start output
N: no 3D-linearization (OL) in file (F) or PS-startup (S), page 1/1

see similar files: <http://130.149.60.45/~farbmetrik/RE58/RE58.HTM>
technical information: <http://www.ps.bam.de> or <http://130.149.60.45/~farbmetrik>



TUB registration: 20150701-RE58/RE58LONI.TXT /PS
application for measurement of offset print output

TUB material: code=rhata

1-003031-L0 RE580-7N

Test chart G with 40x27=1080 colours; digital equidistant 9 or 16 step colour scales; Colour data in columns (A-n): $rgb + cmy0$ (A, J + k26_s27), 000a (k), w (l), mm0 (m), www (n), 3D = 0

TUB-test chart RE58; 1080 standard colours
Test chart according to DIN 33872, 3D=0, de=0, cmy0

input: *rgb/cmyk* -> *rgb/cmyk*
output: no change

