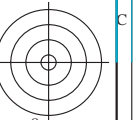
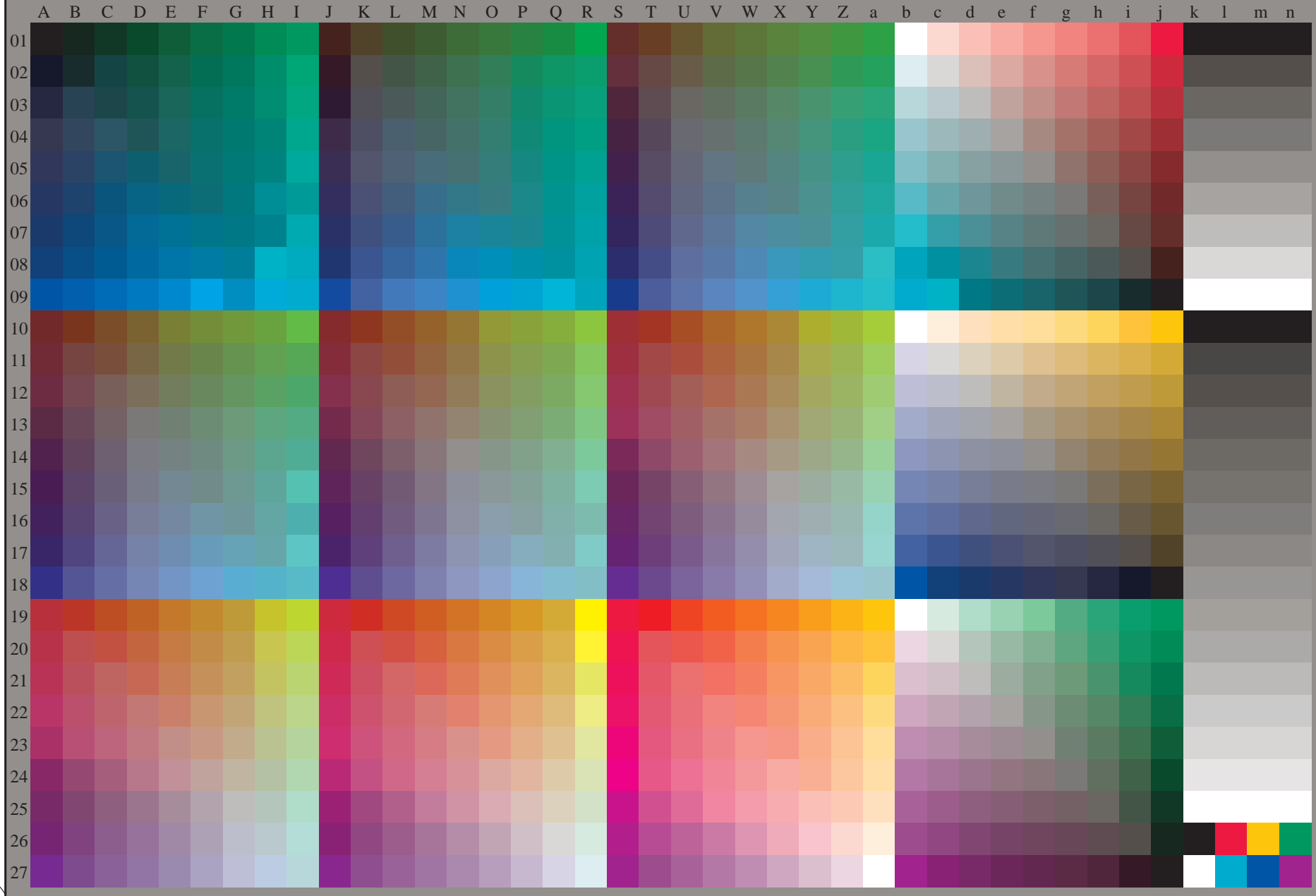


http://130.149.60.45/~farbmetrik/RE59/RE59L0FP.PDF /.PS; 3D-linearization
F: 3D-linearization RE59/RE59LE30FP.DAT in file (F), page 2/2



see similar files: <http://130.149.60.45/~farbmetrik/RE59/RE59L0FP.PDF> / .PS
technical information: <http://www.ps.bam.de> or <http://130.149.60.45/~farbmetrik>

TUB registration: 20150701-RE59/RE59L0FP.PDF /.PS
application for measurement of laser printer output, separation cmykn6* (CMYK)
TUB material: code=thad4ta



1-113130-L0 RE590-73

Test chart G with 40x27=1080 colours; digital equidistant 9 or 16 step colour scales; Colour data in column (A-n): *rgb* (A_n), 3D = 1

TUB-test chart RE59; 1080 standard colours
Test chart according to DIN 33872, 3D=1, de=1, *cmyk**

input: *rgb/cmyk* -> *rgbde*
output: 3D-linearization to *cmyk**_{de}

1-113130-F0

