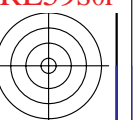
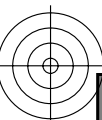


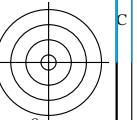
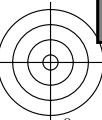
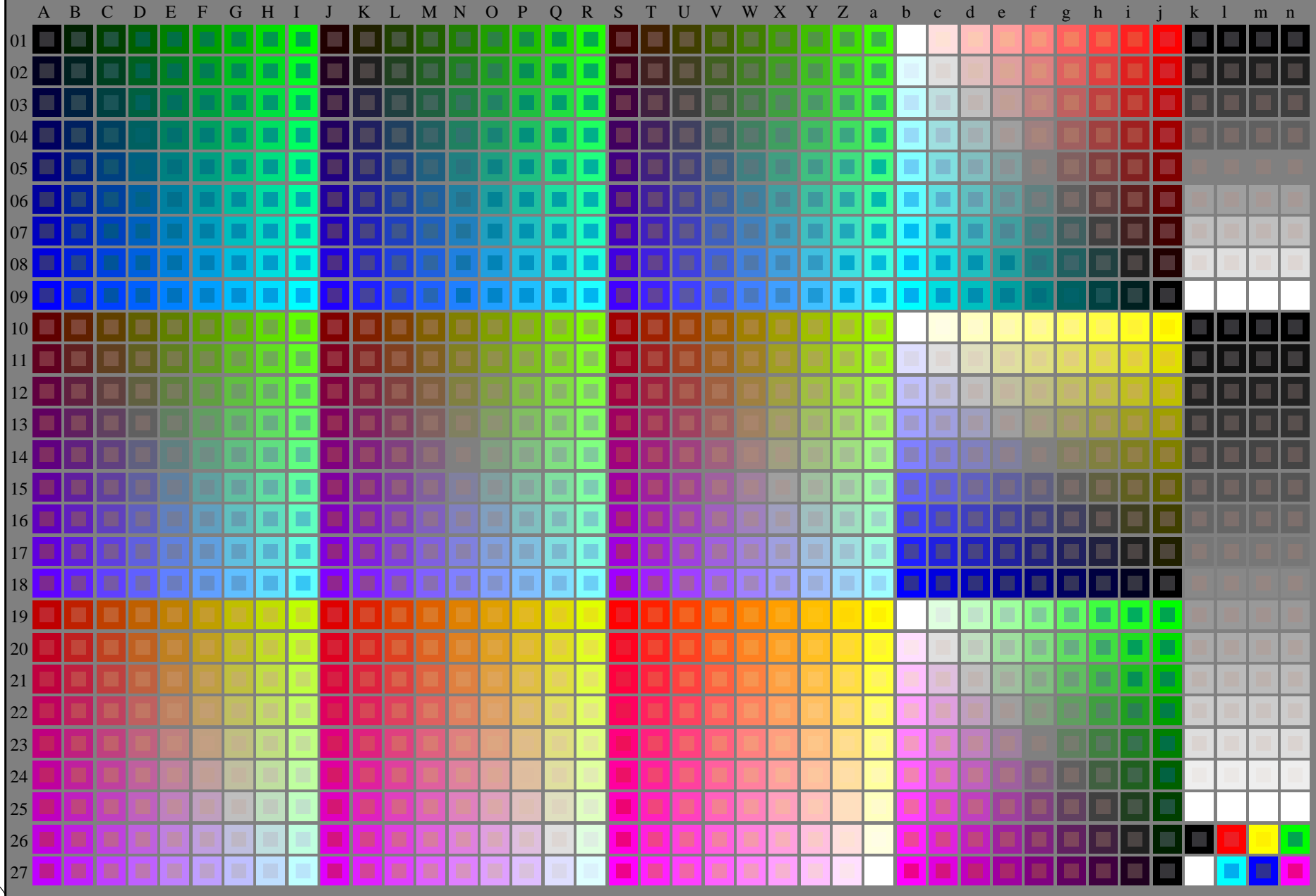
http://130.149.60.45/~farbmetrik/RE59/RE59L0NP.PDF /.PS; start output
N: no 3D-linearization (OL) in file (F) or PS-startup (S), page 1/2



see similar files: <http://130.149.60.45/~farbmetrik/RE59/RE59L0NP.PDF /.PS>;
technical information: <http://www.ps.bam.de> or <http://130.149.60.45/~farbmetrik>

TUB registration: 20150701-RE59/RE59L0NP.PDF /.PS
application for measurement of laser printer output

TUB material: code=thad4ta



1-003030-L0 RE590-7N

Test chart G with 40x27=1080 colours; digital equidistant 9 or 16 step colour scales; Colour data in column (A-n): *rgb + cmy0* (A_j + k26_n27), 000n (k), w (l), nnn0 (m), www (n), 3D = 0

TUB-test chart RE59; 1080 standard colours
Test chart according to DIN 33872, 3D=0, de=0, *cmyk*

input: *rgb/cmyk* -> *rgb/cmyk*
output: no change

