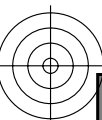
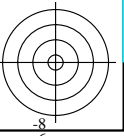
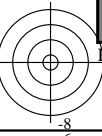
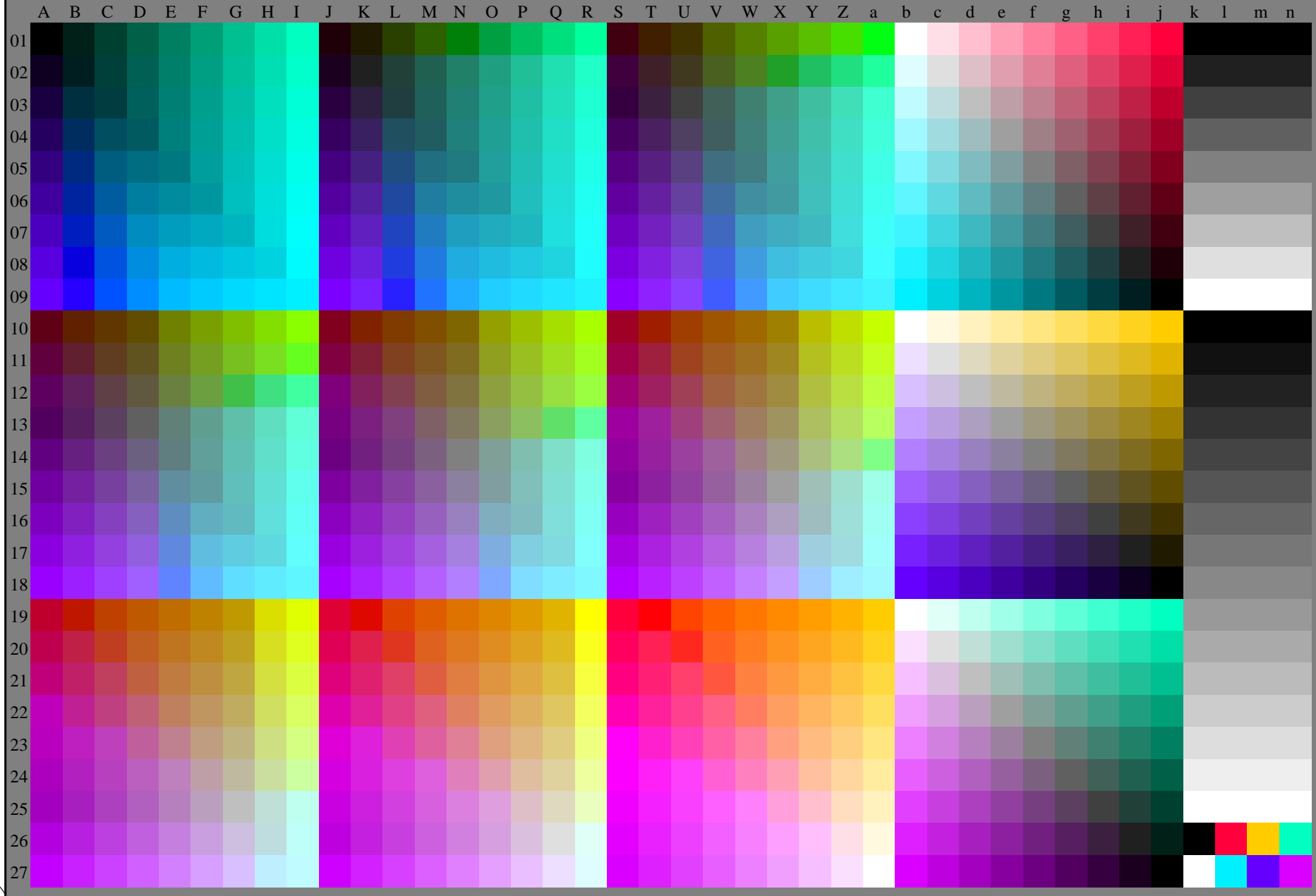


http://130.149.60.45/~farbmetrik/RE60/RE60L0NP.PDF /.PS; transfer output  
N: no 3D-linearization (OL) in file (F) or PS-startup (S), page 2/2



see similar files: <http://130.149.60.45/~farbmetrik/RE60/RE60L0NP.PDF> / .PS  
technical information: <http://www.ps.bam.de> or <http://130.149.60.45/~farbmetrik>

TUB registration: 20150701-RE60/RE60L0NP.PDF /.PS  
application for measurement of laser printer output, no separation rgb (RGB)  
TUB material: code=thata



RE600-71 1-013134-L0

TUB-test chart RE60; 1080 standard colours,  $cf=1$   
Test chart according to DIN 33872, 3D=0,  $de=1$ ,  $rgb$

input:  $rgb/cmyk \rightarrow rgb_e$   
output: transfer to  $rgb_e$



1-013134-F0