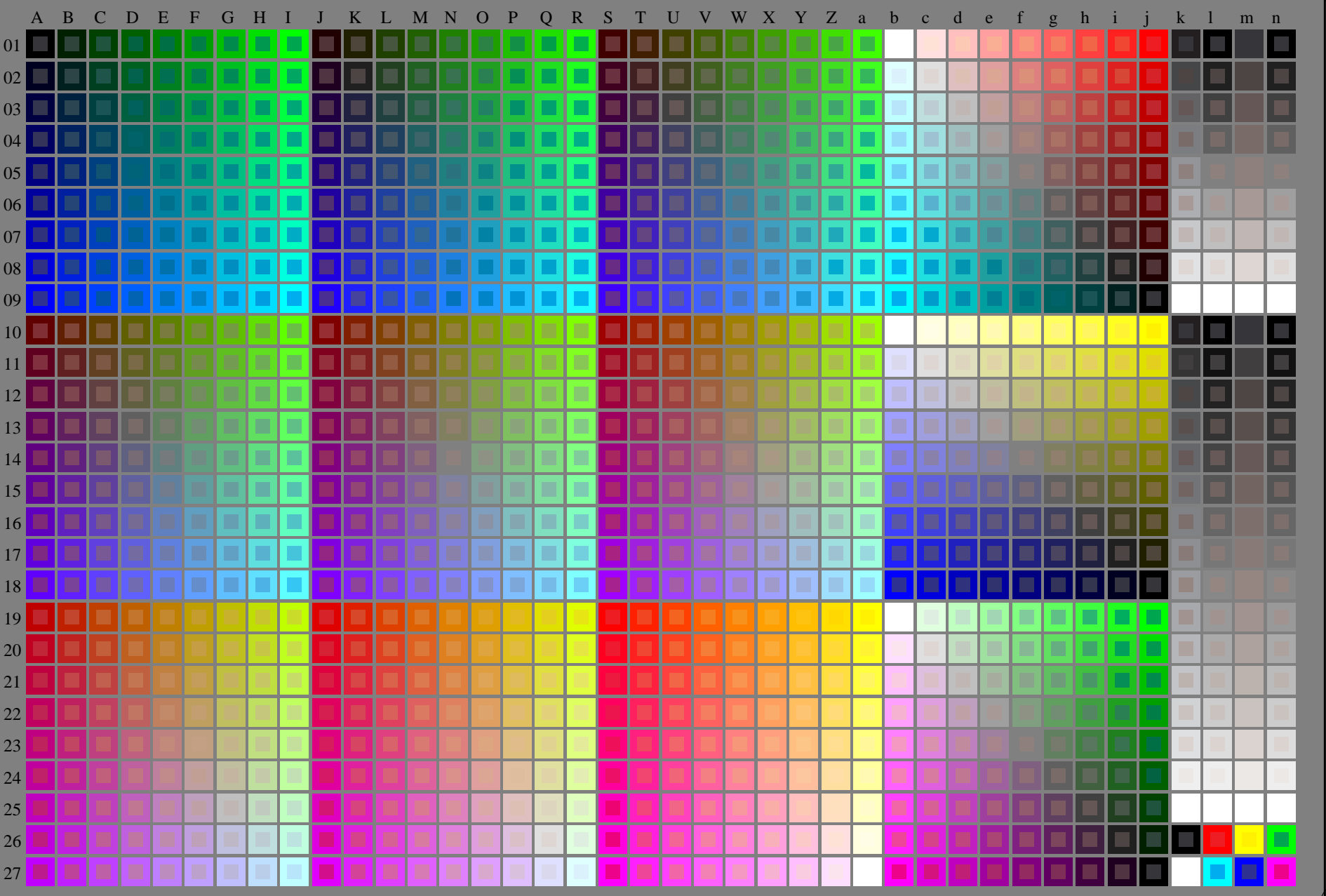


http://130.149.60.45/~farbmetrik/RE60/RE60LOFP.PDF /.PS; start output
F: 3D-linearization RE60/RE60LE30FP.DAT in file (F), page 1/2

see similar files: <http://130.149.60.45/~farbmetrik/RE60/RE60.HTM>
technical information: <http://www.ps.bam.de> or <http://130.149.60.45/~farbmetrik>

TUB registration: 20150701-RE60/RE60LOFP.PDF /.PS
application for measurement of laser printer output
TUB material: code=rha4ta

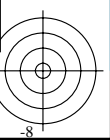
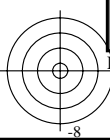


RE600-7N_RGB 1-103034-L0

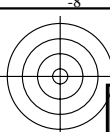
Test chart G with 40x27=1080 colours; equidistant 9 or 16 step colour scales; Colour data in column (A-n): **rgb** (A_j + k26_n27), 000n (k), w (l), nnn0 (m), www (n), 3D = 1

TUB-test chart RE60; 1080 standard colours, $cf=1$
Test chart according to DIN 33872

input: *rgb/cmyk* -> *rgb/cmyk*
output: no change

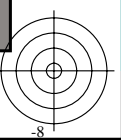
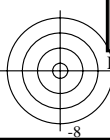
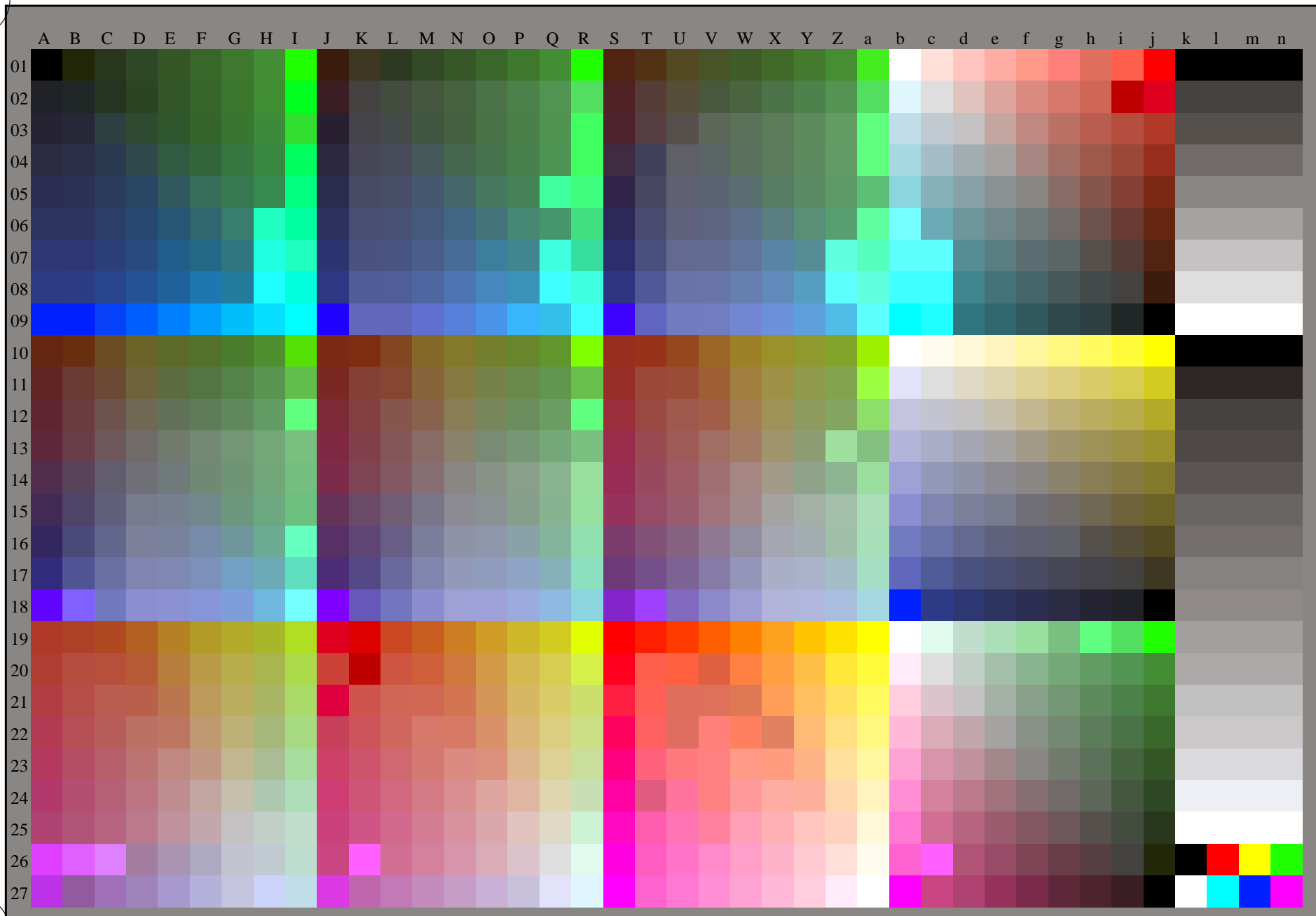


http://130.149.60.45/~farbmetrik/RE60/RE60L0FP.PDF /.PS; 3D-linearization
F: 3D-linearization RE60/RE60LE30FP.DAT in file (F), page 2/2



see similar files: <http://130.149.60.45/~farbmetrik/RE60/RE60L0FP.PDF> / .PS
technical information: <http://www.ps.bam.de> or <http://130.149.60.45/~farbmetrik>

TUB registration: 20150701-RE60/RE60L0FP.PDF /.PS TUB material: code=rh4ta
application for measurement of laser printer output, no separation rgb* (RGB)



TUB-test chart RE60; 1080 standard colours, cf=1
Test chart according to DIN 33872, 3D=1, de=0, rgb*

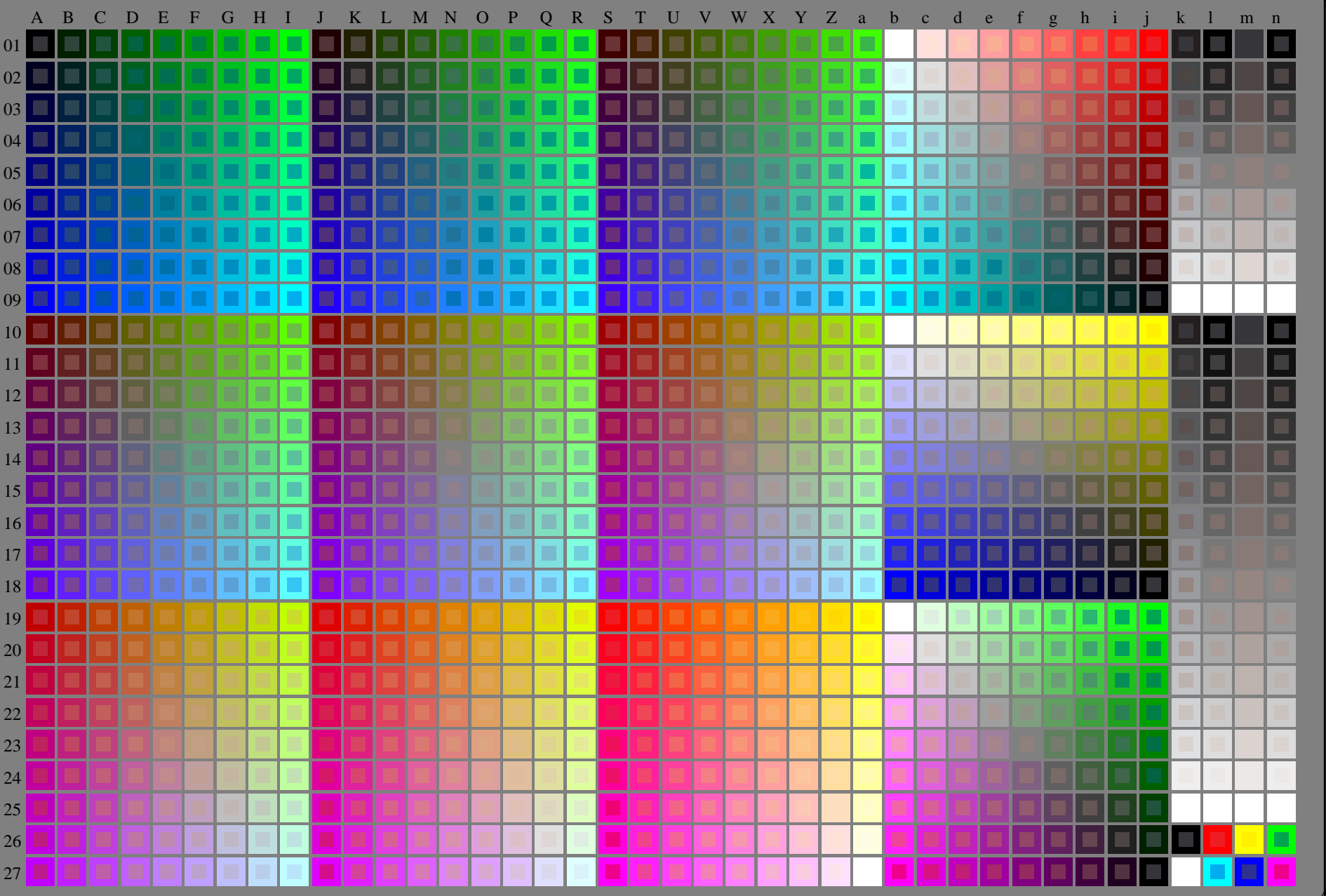
input: rgb/cmyk -> rgb_{dd}
output: 3D-linearization to rgb*_{dd}



http://130.149.60.45/~farbmetrik/RE60/RE60L0FP.PDF /.PS; start output
F: 3D-linearization RE60/RE60LE30FP.DAT in file (F), page 1/2

see similar files: <http://130.149.60.45/~farbmetrik/RE60/RE60.HTM>
technical information: <http://www.ps.bam.de> or <http://130.149.60.45/~farbmetrik>

TUB registration: 20150701-RE60/RE60L0FP.PDF /.PS
application for measurement of laser printer output
TUB material: code=rha4ta

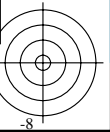
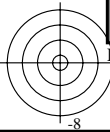


RE600-7N_RGB 1-113034-L0

Test chart G with 40x27=1080 colours; equidistant 9 or 16 step colour scales; Colour data in column (A-n): **rgb** (A_j + k26_n27), 000n (k), w (l), nnn0 (m), www (n), 3D = 1

TUB-test chart RE60; 1080 standard colours, cf=1
Test chart according to DIN 33872

input: *rgb/cmyk* -> *rgb/cmyk*
output: no change

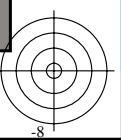
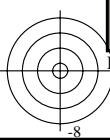
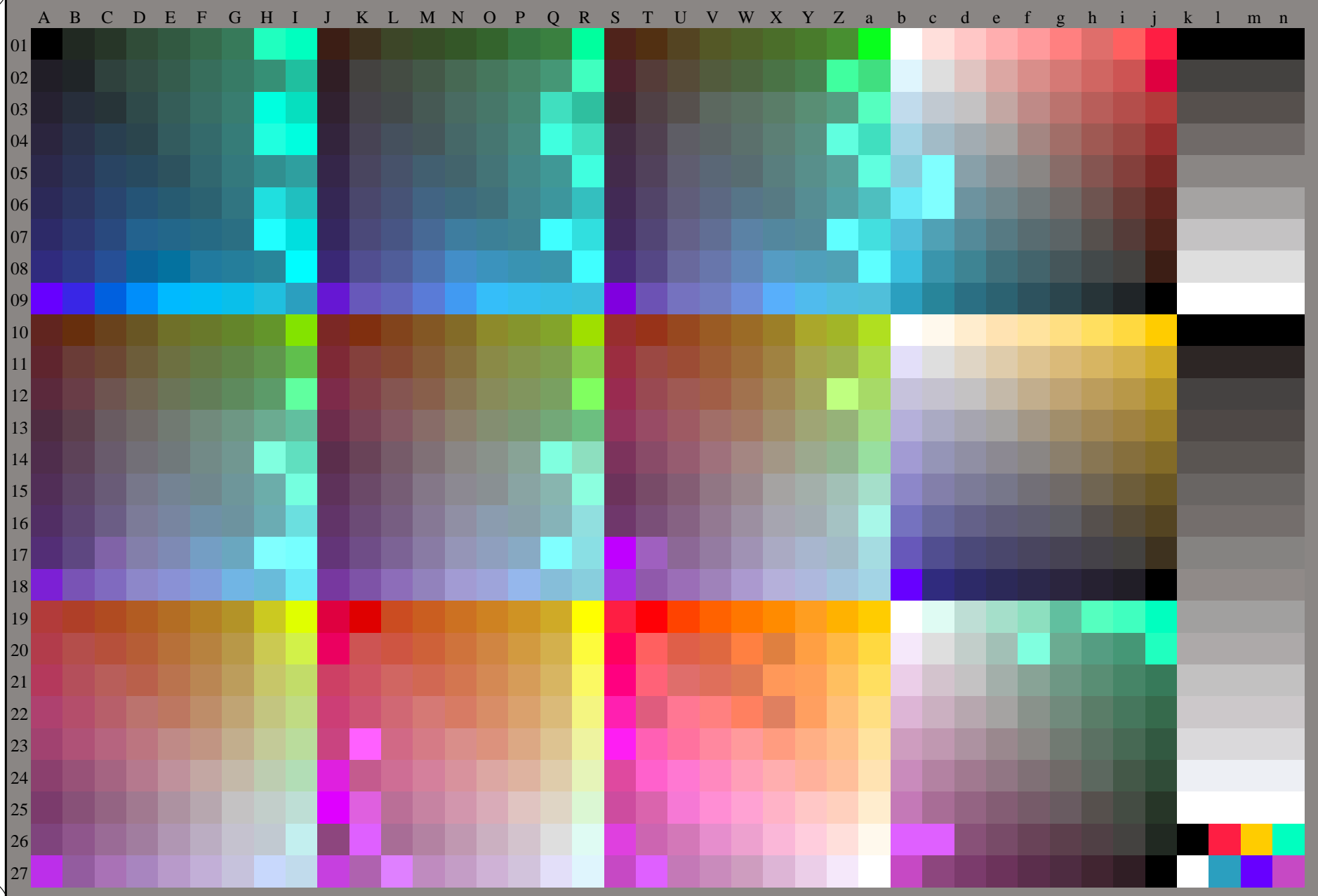


http://130.149.60.45/~farbmetrik/RE60/RE60L0FP.PDF /.PS; 3D-linearization
F: 3D-linearization RE60/RE60LE30FP.DAT in file (F), page 2/2



see similar files: <http://130.149.60.45/~farbmetrik/RE60/RE60L0FP.PDF> / .PS
technical information: <http://www.ps.bam.de> or <http://130.149.60.45/~farbmetrik>

TUB registration: 20150701-RE60/RE60L0FP.PDF /.PS TUB material: code=rh4ta
application for measurement of laser printer output, no separation rgb* (RGB)



TUB-test chart RE60; 1080 standard colours, cf=1
Test chart according to DIN 33872, 3D=1, de=1, rgb*

input: rgb/cmyk -> rgb_{de}
output: 3D-linearization to rgb*_{de}

