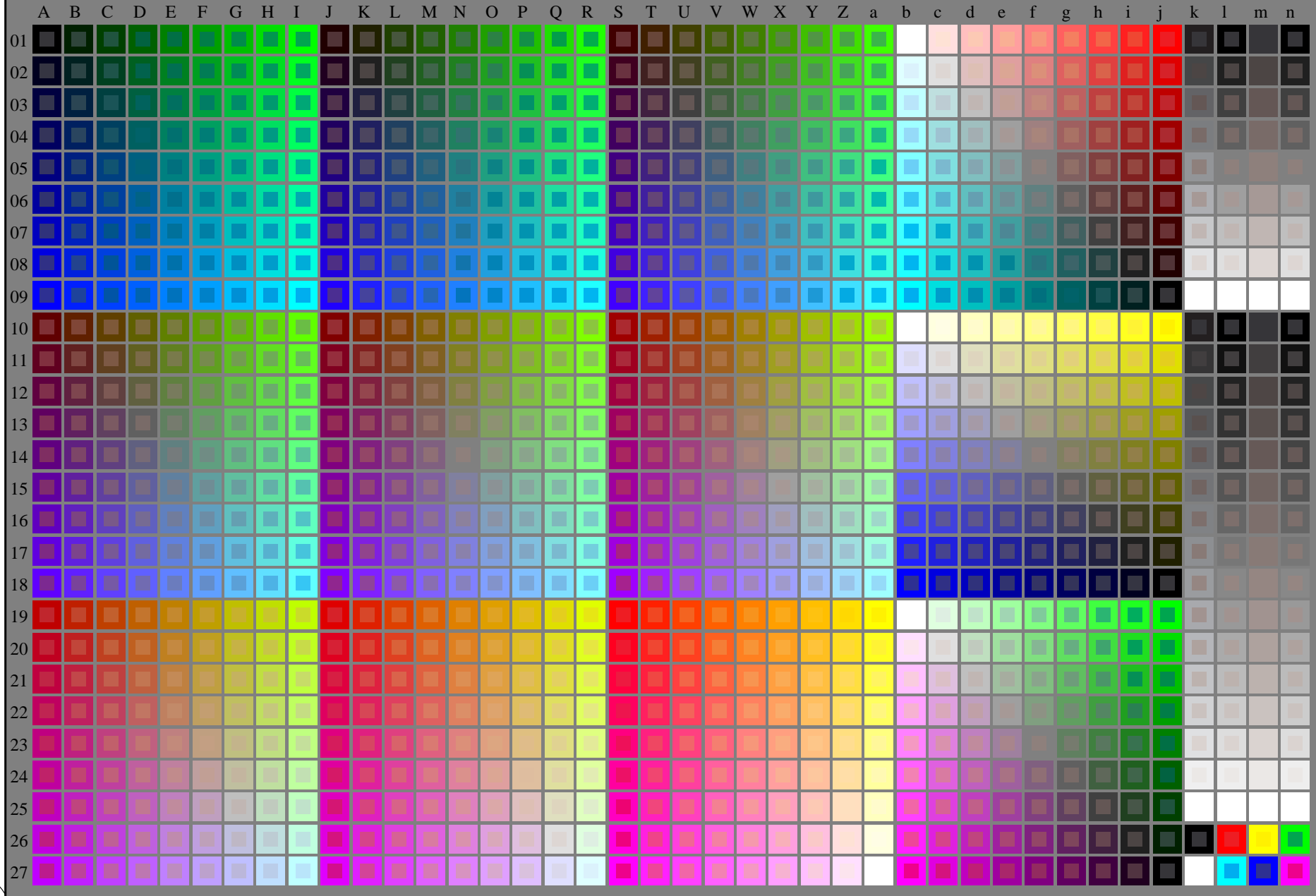


http://130.149.60.45/~farbmetrik/RE60/RE60LONP.PDF /.PS; start output  
N: no 3D-linearization (OL) in file (F) or PS-startup (S), page 1/2

see similar files: <http://130.149.60.45/~farbmetrik/RE60/RE60LONP.PDF /.PS>  
technical information: <http://www.ps.bam.de> or <http://130.149.60.45/~farbmetrik>

TUB registration: 20150701-RE60/RE60LONP.PDF /.PS  
application for measurement of laser printer output

TUB material: code=thad4ta



RE600-7N\_RGB 1-003034-L0 Test chart G with 40x27=1080 colours; equidistant 9 or 16 step colour scales; Colour data in column (A-n): **rgb (A\_j + k26\_n27), 000n (k), w (l), nnn0 (m), www (n), 3D = 0**  
TUB-test chart RE60; 1080 standard colours,  $cf=1$  input: *rgb/cmyk* -> *rgb/cmyk*  
Test chart according to DIN 33872 output: no change