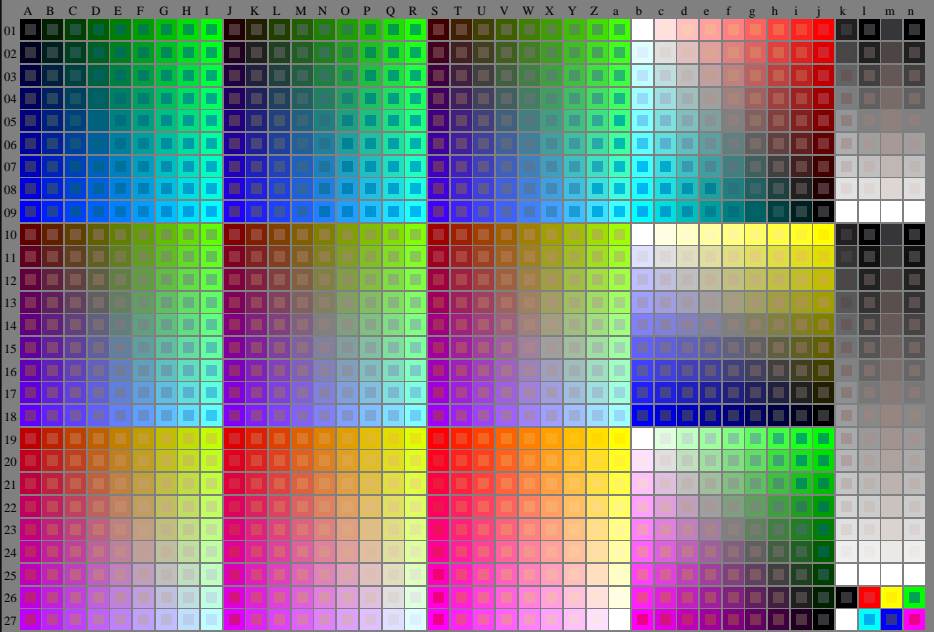


http://130.149.60.45/~farbmetrik/RE67/RE67LONI.TXT /.PS; start output
N: no 3D-linearization (OL) in file (F) or PS-startup (S), page 1/1

see similar files: <http://130.149.60.45/~farbmetrik/RE67/RE67.HTM>
technical information: <http://www.ps.bam.de> or <http://130.149.60.45/~farbmetrik>



TUB registration: 20150701-RE67/RE67LONI.TXT /.PS
application for measurement of laser printer output

TUB material: code=rhata

RE670-7N_RGB 1-003030-L0

TUB-test chart RE67; 1080 standard colours, *cf*=1
Test chart according to DIN 33872

input: *rgb/cmyk* -> *rgb/cmyk*
output: no change

Test chart G with 40x27=1080 colours; equidistant 9 or 16 step colour scales; Colour data in column (A-n): *rgb* (A_j + k26_n27), 000n (k), w (l), nnn0 (m), www (n), 3D = 0