

http://130.149.60.45/~farbmetrik/RE96/RE96L0FP.PDF /.PS; 3D-linearization
F: 3D-linearization RE96/RE96LE30FP.DAT in file (F), page 2/2

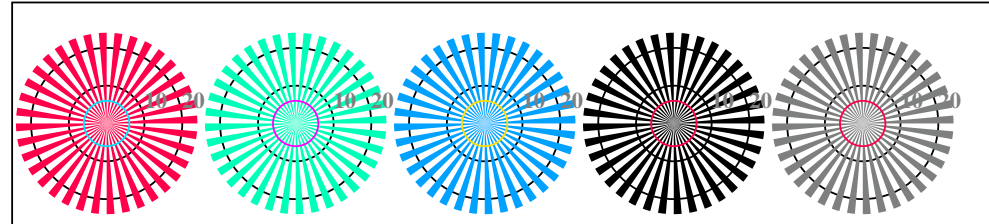
see similar files: http://130.149.60.45/~farbmetrik/RE96/RE96L0FP.PDF /.PS
technical information: http://www.ps.bam.de or http://130.149.60.45/~farbmetrik

TUB registration: 20130201-RE96/RE96L0FP.PDF /.PS
application for measurement of display output, no separation

TUB material: code=thad4ta

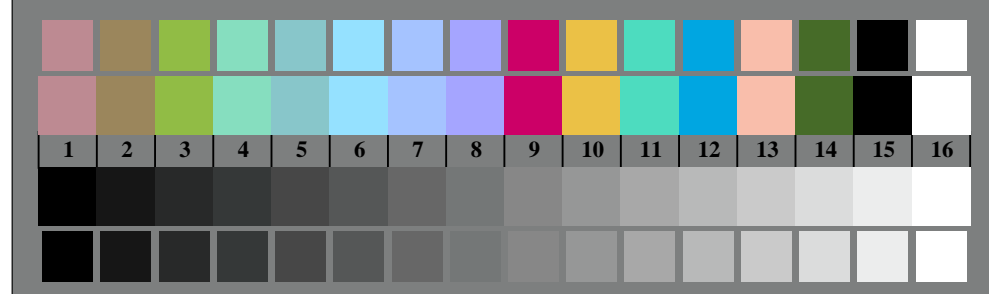


RE960-3, Picture D1Wde: Flower motif, 14 CIE-test colours and 2 + 16 grey steps (sf); ; PS operator 3 colorimage

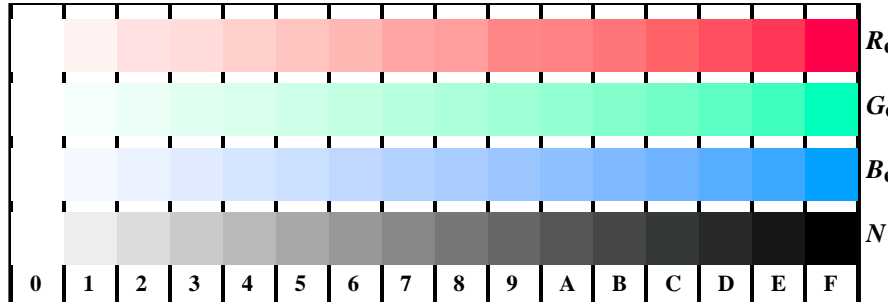
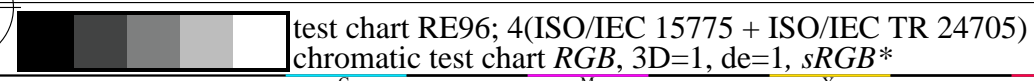


radial gratings W-Re radial gratings W-Ge radial gratings W-Be radial gratings W-N radial gratings W-Z

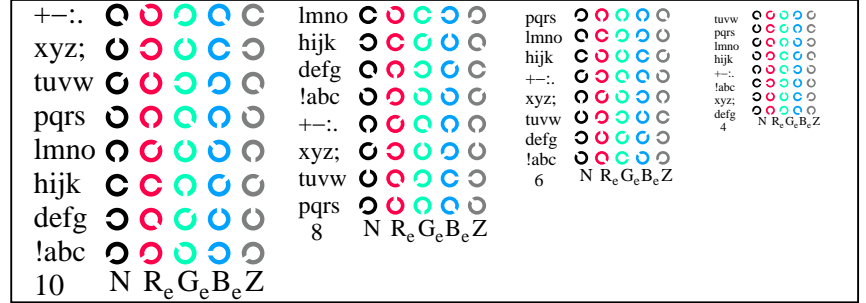
RE960-5, Picture D2Wde: radial gratings W-Re; W-Ge; W-Be; W-N; PS operator rgb->rgbde setrgbcolor



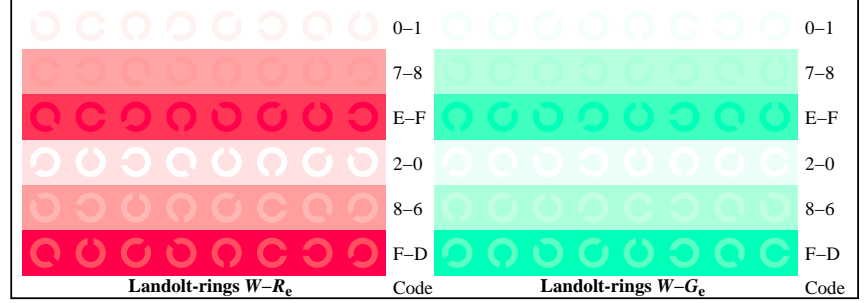
RE960-7, Picture D3Wde: 14 CIE-test colours and 2 + 16 grey steps (sf); rgb/cmyk0->rgbde setrgbcolor



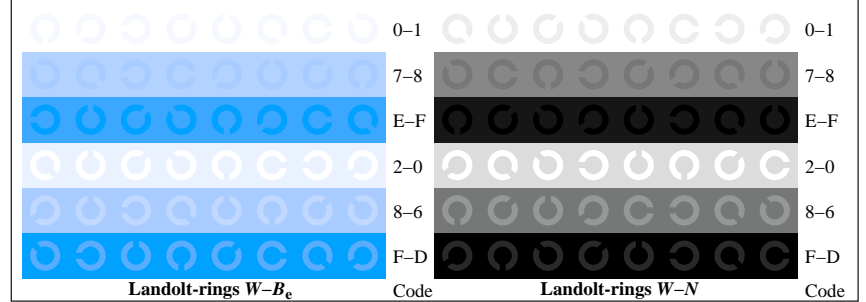
RE961-1, Picture D4Wde: 16 equidistant steps W-Re; W-Ge; W-Be; W-N; rgb/cmyk0->rgbde setrgbcolor



RE961-3, Picture D5Wde: Sript and Landolt-rings N; Re; Ge; Be; Z; PS operator rgb->rgbde setrgbcolor



RE961-5, Picture D6Wde: Landolt-rings W-Re; W-Ge; PS operator rgb->rgbde setrgbcolor



RE961-7, Picture D7Wde: Landolt-rings W-Be; W-N; PS operator rgb->rgbde setrgbcolor

input: rgb/cmyk -> rgbde
output: 3D-linearization to rgb*de

