

Entrée et sortie: Système Offset Reflective ORS18a pour la teinte CIELAB relative $h_{ab,a,rel} = h_{ab}/360 = 262/360 = 0.72$

$H^*_- = G75B_-$

Données de couleurs périphériques (d)

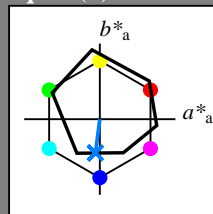
ou élémentaires (e):

HIC^*_-

code de teinte pour les couleurs de cette page:

$H^*_- = G75B_-$

triangle de luminosité T^*



ORS18a; données CIELAB (a) adaptées

nom	$L^*=L^*_a a^*_a$	b^*_a	$C^*_{ab,a}$	$h^*_{ab,a}$	
R _{-,Ma}	47.9	65.3	50.5	82.6	37
Y _{-,Ma}	90.3	-10.2	91.7	92.3	96
G _{-,Ma}	50.9	-62.8	34.9	71.9	150
C _{-,Ma}	58.6	-30.3	-45.0	54.2	236
B _{-,Ma}	25.7	31.0	-44.4	54.2	305
M _{-,Ma}	48.1	75.2	-8.3	75.7	353
N _{-,Ma}	18.0	0.0	0.0	0.0	0
W _{-,Ma}	95.4	0.0	0.0	0.0	0
R _{-,CIE}	39.9	58.7	27.9	65.0	25
Y _{-,CIE}	81.2	-2.8	71.5	71.6	92
G _{-,CIE}	52.2	-42.4	13.6	44.5	162
B _{-,CIE}	30.5	1.4	-46.4	46.4	271

Les données de couleur maximale (Ma):

$LabCh^*_{-,Ma}$: 45 -5 -44 44 262

$HIC^*_{-,Ma}$: G75B_100_100_

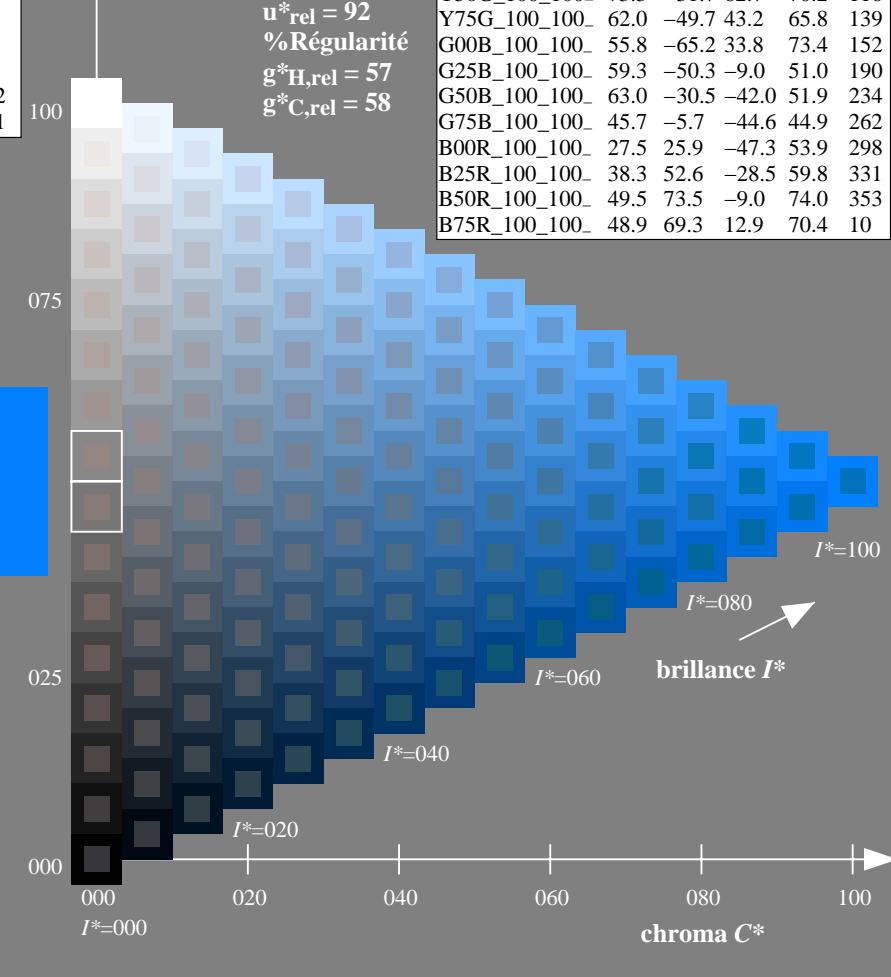
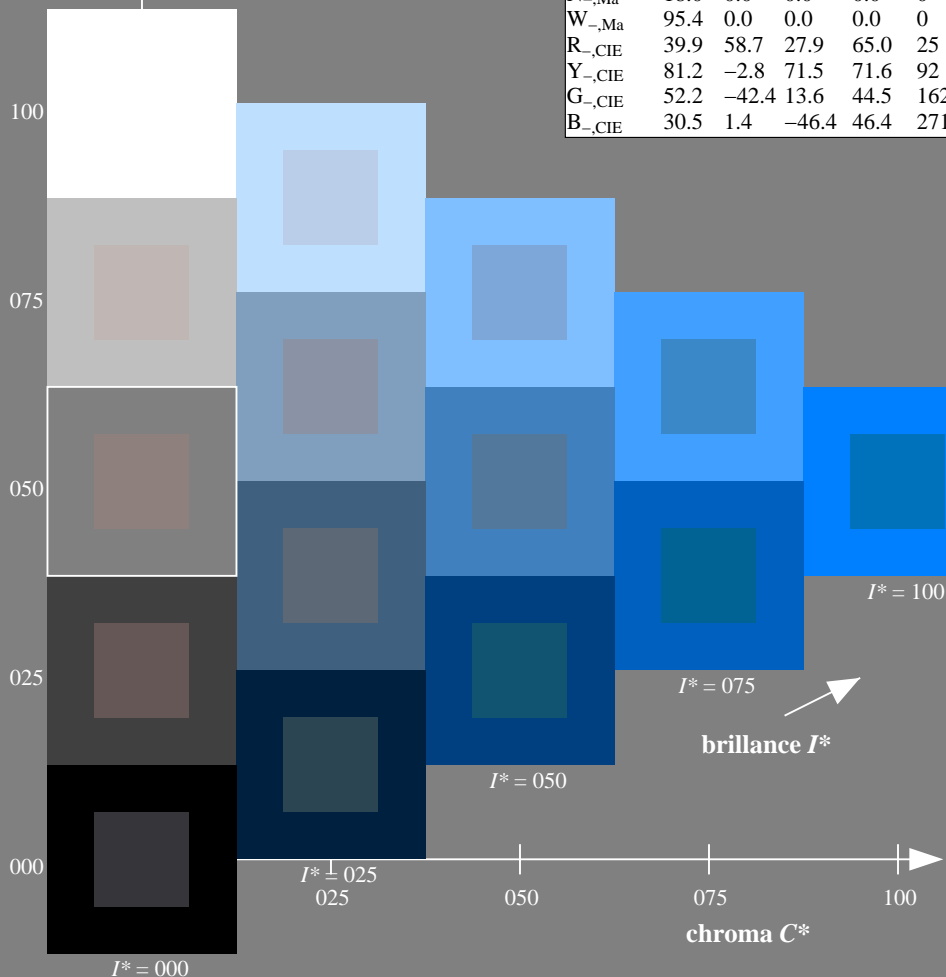
$rgbic^*_{-,Ma}$:

0.0 0.5 1.0 1.0 1.0

triangle de luminosité T^*

ORS20a; données CIELAB (a) adaptées

H^*_-	$L^*=L^*_a a^*_a$	b^*_a	$C^*_{ab,a}$	$h^*_{ab,a}$	
R00Y_100_100_	48.4	66.1	40.2	77.3	31
R25Y_100_100_	56.8	48.0	50.5	69.6	46
R50Y_100_100_	68.6	25.0	63.9	68.6	68
R75Y_100_100_	80.6	4.8	77.2	77.3	86
Y00G_100_100_	90.2	-9.6	88.2	88.7	96
Y25G_100_100_	83.2	-18.4	79.9	81.9	102
Y50G_100_100_	73.3	-31.7	62.7	70.2	116
Y75G_100_100_	62.0	-49.7	43.2	65.8	139
G00B_100_100_	55.8	-65.2	33.8	73.4	152
G25B_100_100_	59.3	-50.3	-9.0	51.0	190
G50B_100_100_	63.0	-30.5	-42.0	51.9	234
G75B_100_100_	45.7	-5.7	-44.6	44.9	262
B00R_100_100_	27.5	25.9	-47.3	53.9	298
B25R_100_100_	38.3	52.6	-28.5	59.8	331
B50R_100_100_	49.5	73.5	-9.0	74.0	353
B75R_100_100_	48.9	69.3	12.9	70.4	10



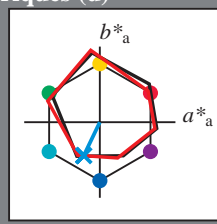
voir fichiers similaires: <http://130.149.60.45/~farbmetrik/RF05/RF05L0FP.PDF> / .PS; sortie de production
 informations techniques: <http://www.ps.bam.de> ou <http://130.149.60.45/~farbmetrik>

TUB enregistrement: 20130201 - RF05/RF05L0FP.PDF /.PS
 application pour la mesure des sorties sur offset
 TUB matériel: code=rh4ta

Entrée et sortie: Système Offset Reflective ORS18a pour la teinte CIELAB relative $h_{ab,a,rel} = h_{ab}/360 = 244/360 = 0.67$

$H^*_e = G75B_e$

Données de couleurs périphériques (d)
ou élémentaires (e):
 HIC^*_e
code de teinte pour les couleurs de cette page:
 $H^*_e = G75B_e$
triangle de luminosité T^*



ORS20a; données CIELAB (a) adaptées

nom	$L^*=L^*_a a^*_a$	b^*_a	$C^*_{ab,a}$	$h^*_{ab,a}$
Re,Ma	47.6	64.9	30.9	71.9
Ye,Ma	82.9	-3.5	87.8	87.9
Ge,Ma	52.4	-67.1	21.5	70.5
Ce,Ma	56.6	-39.7	-29.9	49.8
Be,Ma	37.9	1.3	-45.4	45.4
Me,Ma	34.8	49.2	-30.0	57.7
Ne,Ma	17.7	0.0	0.0	0.0
We,Ma	95.4	0.0	0.0	0.0
Re,CIE	39.9	58.7	27.9	65.0
Ye,CIE	81.2	-2.8	71.5	71.6
Ge,CIE	52.2	-42.4	13.6	44.5
Be,CIE	30.5	1.4	-46.4	46.4

Les données de couleur maximale (Ma):

LabCh $^*_e, Ma$: 52 -21 -44 48 244

HIC^*_e, Ma : G75B_100_100_e

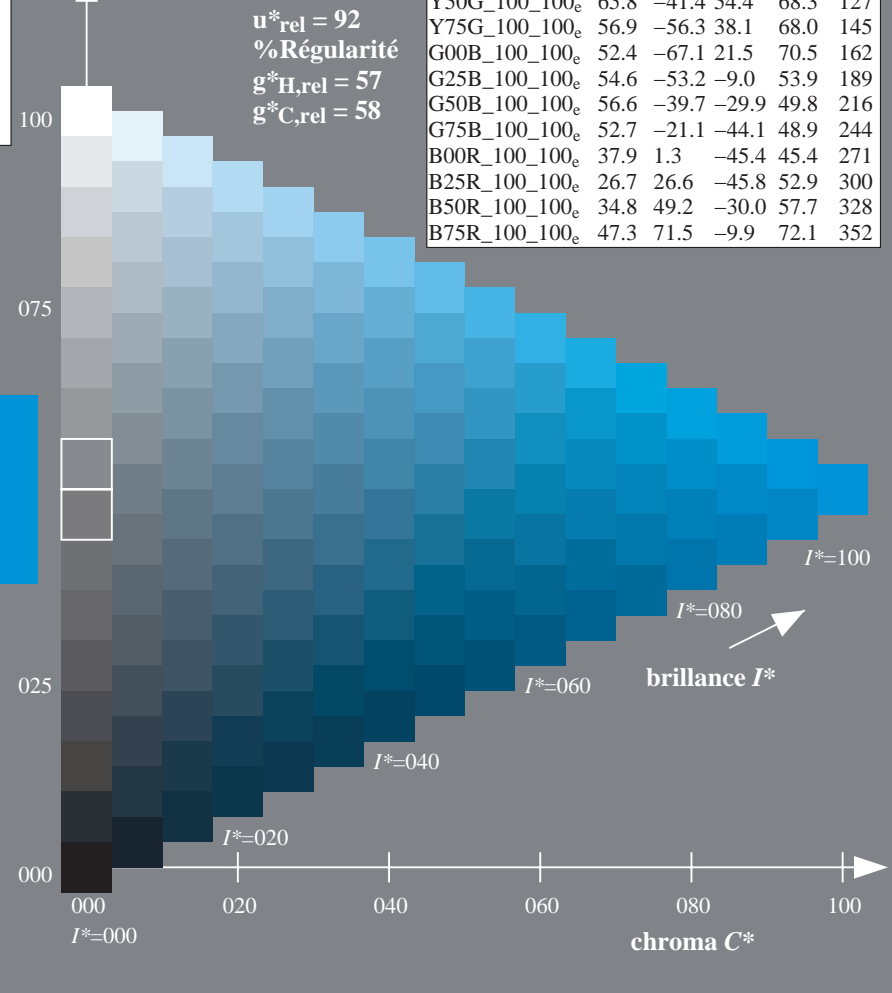
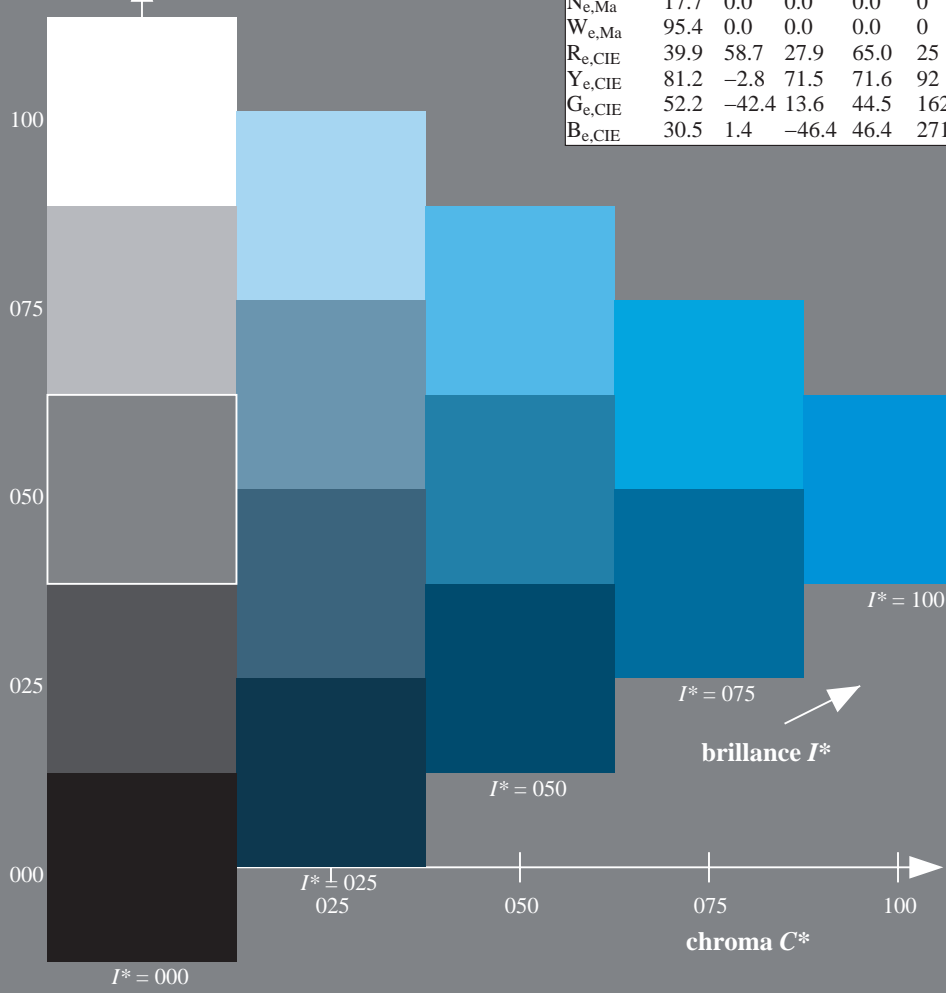
rgbic $^*_e, Ma$:
0.0 0.78 1.0 1.0 1.0

triangle de luminosité T^*

%Gamme
 $u^*_{rel} = 92$
%Régularité
 $g^*_{H,rel} = 57$
 $g^*_{C,rel} = 58$

ORS20a; données CIELAB (a) adaptées

H^*_e	$L^*=L^*_a a^*_a$	b^*_a	$C^*_{ab,a}$	$h^*_{ab,a}$
R00Y_100_100_e	47.6	64.9	30.9	71.9
R25Y_100_100_e	51.5	54.2	47.2	71.9
R50Y_100_100_e	60.3	35.6	59.0	68.9
R75Y_100_100_e	70.4	17.0	72.2	74.1
Y00G_100_100_e	82.9	-3.5	87.8	87.9
Y25G_100_100_e	76.9	-25.5	75.9	80.1
Y50G_100_100_e	65.8	-41.4	54.4	68.3
Y75G_100_100_e	56.9	-56.3	38.1	68.0
G00B_100_100_e	52.4	-67.1	21.5	70.5
G25B_100_100_e	54.6	-53.2	-9.0	53.9
G50B_100_100_e	56.6	-39.7	-29.9	49.8
G75B_100_100_e	52.7	-21.1	-44.1	48.9
B00R_100_100_e	37.9	1.3	-45.4	45.4
B25R_100_100_e	26.7	26.6	-45.8	52.9
B50R_100_100_e	34.8	49.2	-30.0	57.7
B75R_100_100_e	47.3	71.5	-9.9	72.1

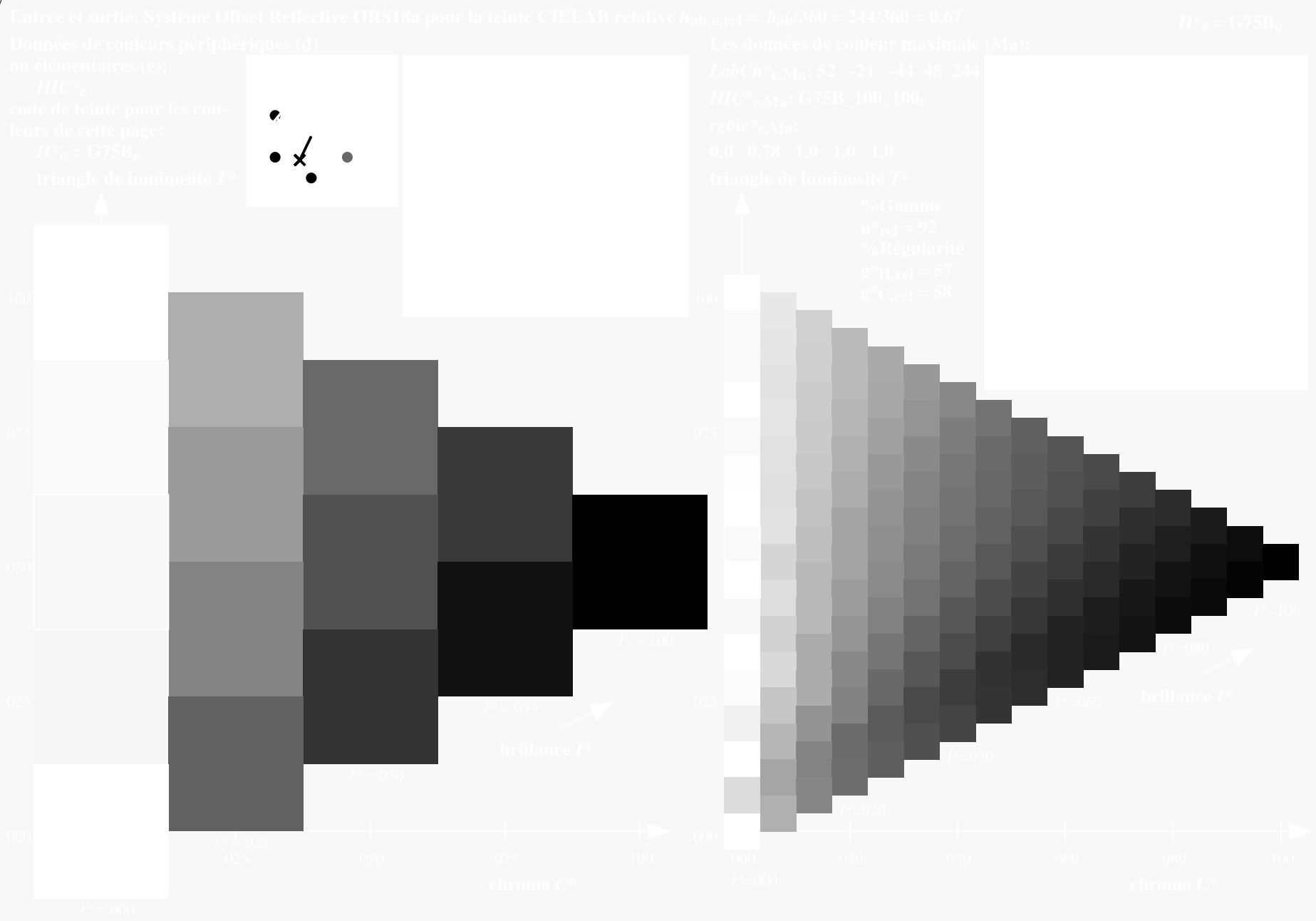


voir fichiers similaires: <http://130.149.60.45/~farbmetrik/RF05/RF05.HTM>
informations techniques: <http://www.ps.bam.de> ou <http://130.149.60.45/~farbmetrik>

TUB enregistrement: 20130201 -RF05/RF05LOFP.PDF /.PS TUB matériel: code=rh4ta
application pour la mesure des sorties sur offset, séparation cmykn6* (CMYK)

voir fichiers similaires: <http://130.149.60.45/~farbmetrik/RF05/RF05.HTM>
informations techniques: <http://www.ps.bam.de> ou <http://130.149.60.45/~farbmetrik>

TUB enregistrement: 20130201 -RF05/RF05L0FP.PDF /.PS TUB matériel: code=rh4ta
application pour la mesure des sorties sur offset, séparation cmykn6* (CMYK)



graphique TUB-RF05; code de teinte: $H^*_e=G75B_e$
graphique conforme à DIN 33872, 3D=1, de=1, cmyk*

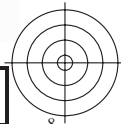
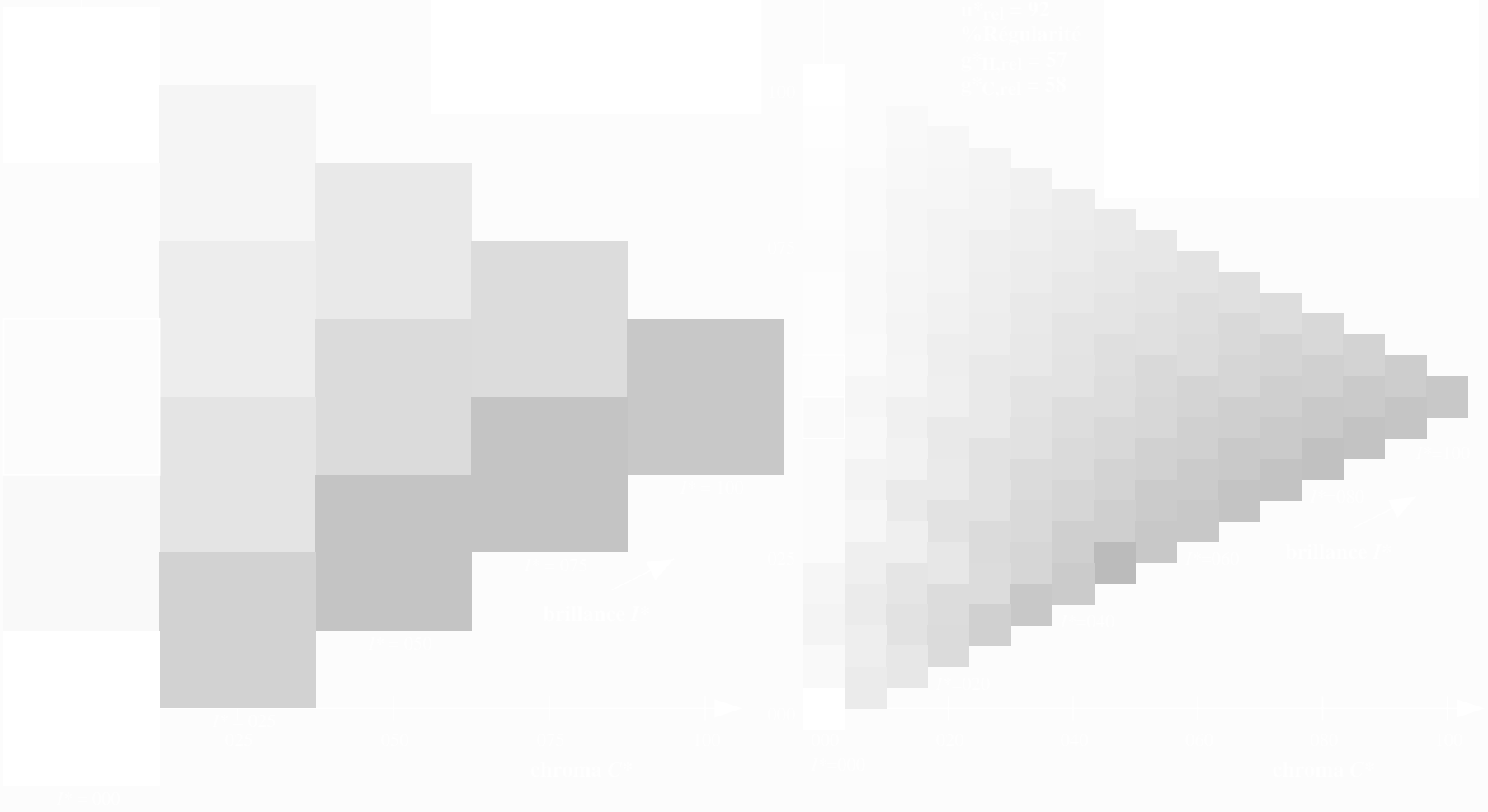
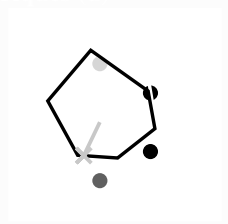
entrée : $rgb/cmyk \rightarrow rgb_{de}$
sortie : linéarisation 3D selon $cmyk^*_{de}$





voir fichiers similaires: <http://130.149.60.45/~farbmetrik/RF05/RF05.HTM>
informations techniques: <http://www.ps.bam.de> ou <http://130.149.60.45/~farbmetrik>

TUB enregistrement: 20130201 - RF05/RF05L0FP.PDF /.PS TUB matériel: code=rh4ta
application pour la mesure des sorties sur offset, séparation cmyk6* (CMYK)



3-113330-L0 RF050-73

graphique TUB-RF05; code de teinte: $H^*_e=G75B_e$
graphique conforme à DIN 33872, 3D=1, de=1, cmyk*

entrée : $rgb/cmyk \rightarrow rgb_{de}$
sortie : linéarisation 3D selon $cmyk^*_{de}$

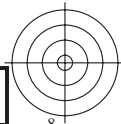
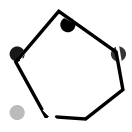
3-113330-F0





voir fichiers similaires: <http://130.149.60.45/~farbmetrik/RF05/RF05L0FP.PDF> / .PS
informations techniques: <http://www.ps.bam.de> ou <http://130.149.60.45/~farbmetrik>

TUB enregistrement: 20130201 - RF05/RF05L0FP.PDF /.PS TUB matériel: code=rh4ta
application pour la mesure des sorties sur offset, séparation cmyk* (CMYK)



3-113430-L0 RF050-73

graphique TUB-RF05; code de teinte: $H^*_e=G75B_e$
graphique conforme à DIN 33872, 3D=1, de=1, cmyk*

entrée : $rgb/cmyk \rightarrow rgb_{de}$
sortie : linéarisation 3D selon $cmyk^*_{de}$

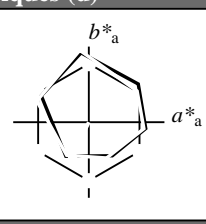
3-113430-F0

Entrée et sortie: Système Offset Reflective ORS18a pour la teinte CIELAB relative $h_{ab,a,rel} = h_{ab}/360 = 244/360 = 0.67$

$H^*_e = G75B_e$

Données de couleurs périphériques (d)
ou élémentaires (e):

HIC^*_e
code de teinte pour les couleurs de cette page:
 $H^*_e = G75B_e$
triangle de luminosité T^*



ORS20a; données CIELAB (a) adaptées

nom	$L^*=L^*_a$	a^*_a	b^*_a	$C^*_{ab,a}$	$h^*_{ab,a}$
$R_{e, Ma}$	47.6	64.9	30.9	71.9	25
$Y_{e, Ma}$	82.9	-3.5	87.8	87.9	92
$G_{e, Ma}$	52.4	-67.1	21.5	70.5	162
$C_{e, Ma}$	56.6	-39.7	-29.9	49.8	216
$B_{e, Ma}$	37.9	1.3	-45.4	45.4	271
$M_{e, Ma}$	34.8	49.2	-30.0	57.7	328
$N_{e, Ma}$	17.7	0.0	0.0	0.0	0
$W_{e, Ma}$	95.4	0.0	0.0	0.0	0
$R_{e, CIE}$	39.9	58.7	27.9	65.0	25
$Y_{e, CIE}$	81.2	-2.8	71.5	71.6	92
$G_{e, CIE}$	52.2	-42.4	13.6	44.5	162
$B_{e, CIE}$	30.5	1.4	-46.4	46.4	271

Les données de couleur maximale (Ma):

$LabCh^*_{e, Ma}: 52 \ -21 \ -44 \ 48 \ 244$

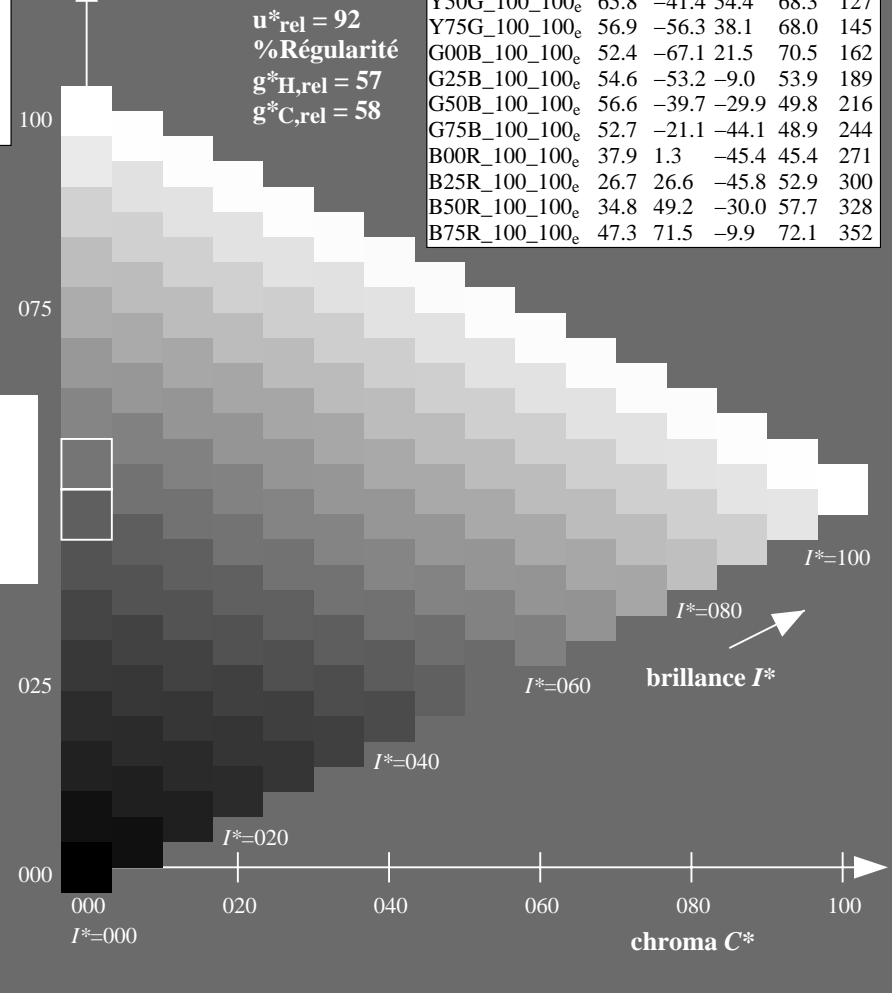
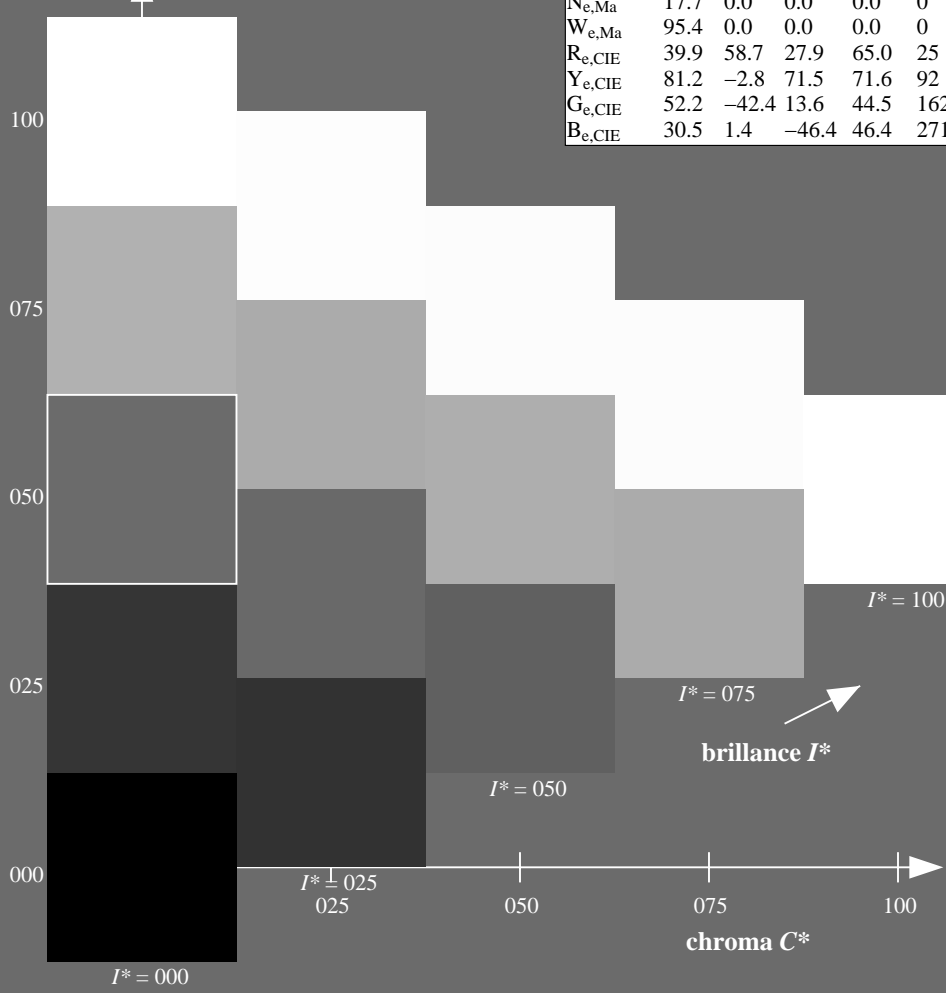
$HIC^*_{e, Ma}: G75B_100_100_e$

$rgbic^*_{e, Ma}: 0.0 \ 0.78 \ 1.0 \ 1.0 \ 1.0$

triangle de luminosité T^*

ORS20a; données CIELAB (a) adaptées

H^*_e	$L^*=L^*_a$	a^*_a	b^*_a	$C^*_{ab,a}$	$h^*_{ab,a}$
$R00Y_100_100_e$	47.6	64.9	30.9	71.9	25
$R25Y_100_100_e$	51.5	54.2	47.2	71.9	41
$R50Y_100_100_e$	60.3	35.6	59.0	68.9	58
$R75Y_100_100_e$	70.4	17.0	72.2	74.1	76
$Y00G_100_100_e$	82.9	-3.5	87.8	87.9	92
$Y25G_100_100_e$	76.9	-25.5	75.9	80.1	108
$Y50G_100_100_e$	65.8	-41.4	54.4	68.3	127
$Y75G_100_100_e$	56.9	-56.3	38.1	68.0	145
$G00B_100_100_e$	52.4	-67.1	21.5	70.5	162
$G25B_100_100_e$	54.6	-53.2	-9.0	53.9	189
$G50B_100_100_e$	56.6	-39.7	-29.9	49.8	216
$G75B_100_100_e$	52.7	-21.1	-44.1	48.9	244
$B00R_100_100_e$	37.9	1.3	-45.4	45.4	271
$B25R_100_100_e$	26.7	26.6	-45.8	52.9	300
$B50R_100_100_e$	34.8	49.2	-30.0	57.7	328
$B75R_100_100_e$	47.3	71.5	-9.9	72.1	352



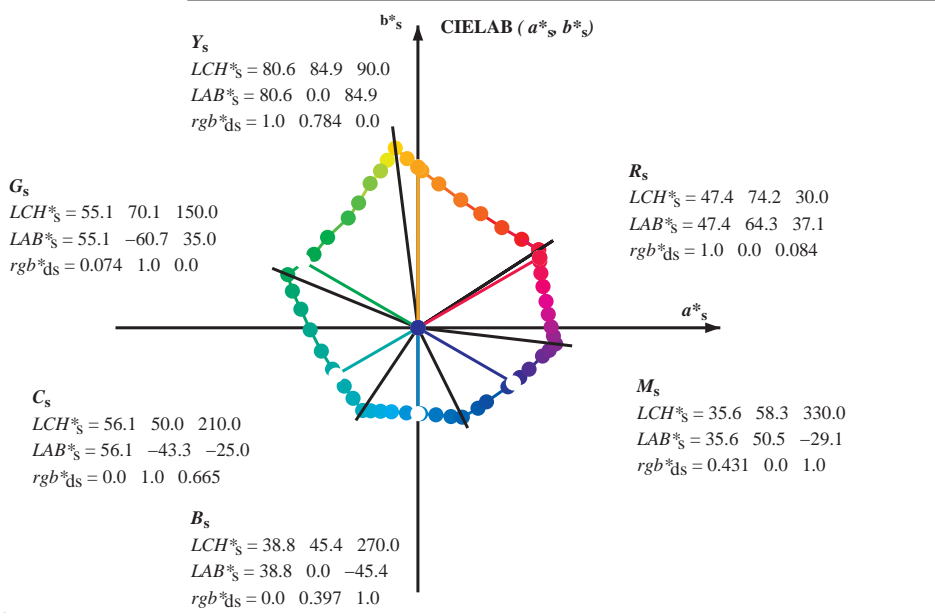
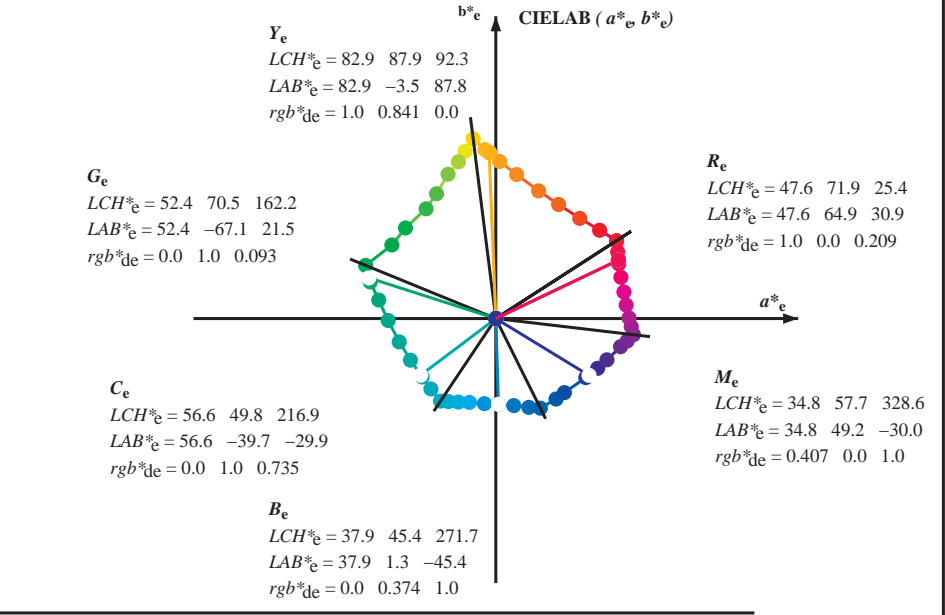
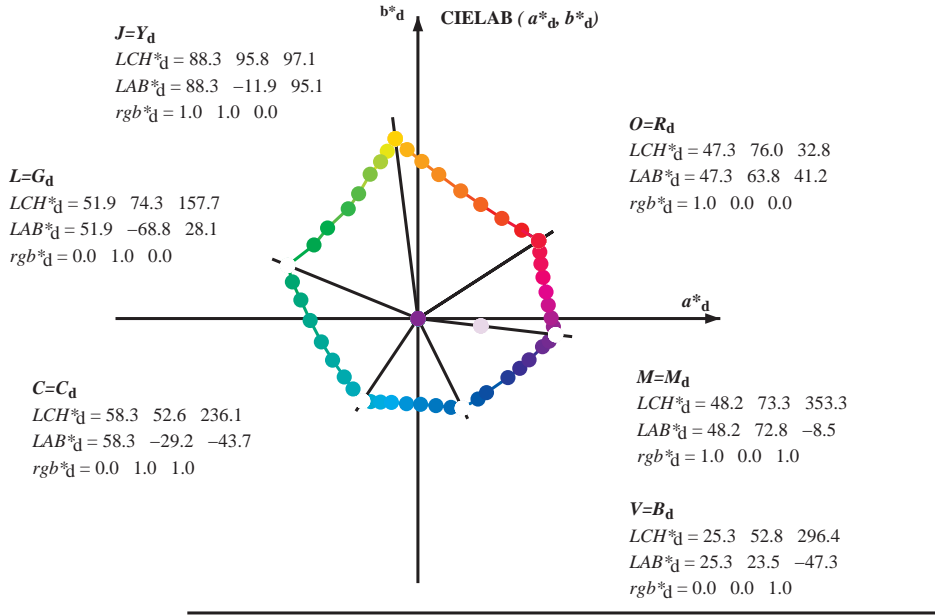
voir fichiers similaires: <http://130.149.60.45/~farbmetrik/RF05/RF05L0FP.PDF> / .PS
informations techniques: <http://www.ps.bam.de> ou <http://130.149.60.45/~farbmetrik>

TUB enregistrement: 20130201 - RF05/RF05L0FP.PDF / .PS
application pour la mesure des sorties sur offset, séparation cmykn6* (CMYK)
TUB matériel: code=rh4ta

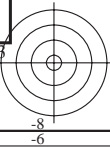
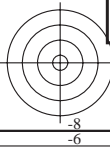
Couleur maximale dans le système colorimétrique : Offset standard print; separation cmy6*, D65 pour l'entrée et sortie; Six angles de teinte à 60 degrés couleurs standard *RYGCBM*_s; $h_{ab,ds} = 30.0, 90.0, 150.0, 210.0, 270.0, 330.0$;
Six angles de teinte des couleurs périphériques *RYGCBM*_d; $h_{ab,d} = 32.8, 97.2, 157.8, 236.2, 296.4, 353.3$; Six angles de teinte des couleurs élémentaires *RYGCBM*_e; $h_{ab,e} = 25.5, 92.3, 162.2, 217.0, 271.7, 328.6$

voir fichiers similaires: <http://130.149.60.45/~farbmetrik/RF05/RF05.LOFP.PDF> / .PS
informations techniques: <http://www.ps.bam.de> ou <http://130.149.60.45/~farbmetrik>

TUB enregistrement: 20130201 -RF05/RF05LOFP.PDF /.PS TUB matériel: code=rh4ta
application pour la mesure des sorties sur offset, séparation cmy6* (CMYK)

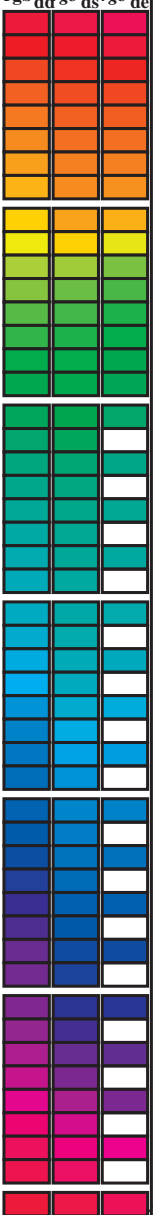


$(a^*_d, b^*_d), (a^*_s, b^*_s), (a^*_e, b^*_e)$
 $rgb^*_e LCH^*_e LAB^*_e$
 $h_{ab,s} rgb^*_s$
 $h_{ab,s} = atan [r^*_d cos(30) + g^*_d cos(150)] / [r^*_d sin(30) + g^*_d sin(150) + b^*_d sin(270)]$ (1)
 $h_{ab,s}$
 $s: h_{ab,s} = 30.0, 90.0, 150.0, 210.0, 270.0, 330.0, 390.0 (i=0,6)$
 $h_{48ab,sij} = h_{ab,si} + j [h_{ab,si+1} - h_{ab,si}] / 8 (i = 0, 1, ..., 5; j = 0, 1, ..., 7)$ (2)
 $h_{360ab,sij} = h_{ab,si} + j [h_{ab,si+1} - h_{ab,si}] / 60 (i = 0, 1, ..., 5; j = 0, 1, ..., 59)$ (3)
 $h_{ab,e}$
 $e: h_{ab,e} = 25.5, 92.3, 162.2, 217.0, 271.7, 328.6, 385.5 (i=0,6)$
 $h_{48ab,eij} = h_{ab,ei} + j [h_{ab,ei+1} - h_{ab,ei}] / 8 (i = 0, 1, ..., 5; j = 0, 1, ..., 7)$ (4)
 $h_{360ab,eij} = h_{ab,ei} + j [h_{ab,ei+1} - h_{ab,ei}] / 60 (i = 0, 1, ..., 5; j = 0, 1, ..., 59)$ (5)
 $h_{ab,d}$
 rgb^*_{de}



Couleur maximale dans le système colorimétrique : Offset standard print; separation cmyn6*, D65 pour l'entrée et sortie; Six angles de teinte à 60 degrés couleurs standard RYGCMB_s; h_{ab,ds} = 30.0, 90.0, 150.0, 210.0, 270.0, 330.0;
Six angles de teinte des couleurs périphériques RYGCMB_d; h_{ab,d} = 32.8, 97.2, 157.8, 236.2, 296.4, 353.3; Six angles de teinte des couleurs élémentaires RYGCMB_c; h_{ab,c} = 25.5, 92.3, 162.2, 217.0, 271.7, 328.6

Table with 15 columns: h_{ab,d}, h_{ab,s}, h_{ab,e}, r_{gb}^a, d_{d64M}, LAB*, ddx64M (x=LabCh), r_{gb}^a, ddx361M, LAB*, ddx361M (x=LabCh), r_{gb}^a, dsx361M, LAB*, dsx361M (x=LabCh), r_{gb}^a, dex361M, LAB*, dex361M. The table contains 390 rows of colorimetric data.

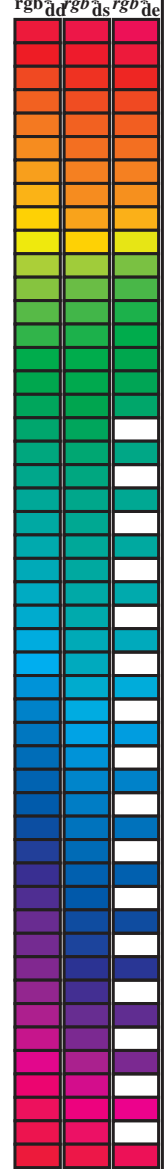


voir fichiers similaires: http://130.149.60.45/~farbmetrik/RF05/RF05.HTM
informations techniques: http://www.ps.bam.de ou http://130.149.60.45/~farbmetrik

TUB enregistrement: 20130201 -RF05/RF05LOFP.PDF /.PS
application pour la mesure des sorties sur offset, séparation cmyn6* (CMYK)
TUB matériel: code=rh4tra

Couleur maximale dans le système colorimétrique : Offset standard print; separation cmy6*, D65 pour l'entrée et sortie; Six angles de teinte à 60 degrés couleurs standard *RYGCBM_s*; $h_{ab,ds} = 30.0, 90.0, 150.0, 210.0, 270.0, 330.0$;
Six angles de teinte des couleurs périphériques *RYGCBM_d*; $h_{ab,d} = 32.8, 97.2, 157.8, 236.2, 296.4, 353.3$; Six angles de teinte des couleurs élémentaires *RYGCBM_c*; $h_{ab,e} = 25.5, 92.3, 162.2, 217.0, 271.7, 328.6$

<i>h_{ab,d}</i>	<i>h_{ab,s}</i>	<i>h_{ab,e}</i>	<i>rgb^{b*}_{dd64M}</i>	<i>LAB^{b*}_{ddx64M (x=LabCh)}</i>	<i>rgb^{b*}_{dex361M}</i>	<i>LAB^{b*}_{dex361M}</i>
32.8	30.0	25.4	1.0 0.0 0.0	47.3 63.8 41.2 76.0 32.8	1.0 0.0 0.209	47.6 64.9 30.9 71.9 25
40.4	37.5	33.8	1.0 0.125 0.0	51.2 54.9 46.7 72.1 40.4	1.0 0.007 0.0	47.6 63.4 41.6 75.8 33
50.0	45.0	42.1	1.0 0.25 0.0	56.0 44.4 53.0 69.1 50.0	1.0 0.148 0.0	52.1 53.0 48.1 71.6 42
61.1	52.5	50.5	1.0 0.375 0.0	61.4 33.2 60.3 68.8 61.1	1.0 0.25 0.0	56.0 44.5 53.0 69.2 49
71.4	60.0	58.8	1.0 0.5 0.0	67.2 22.6 67.6 71.2 71.4	1.0 0.35 0.0	60.3 35.6 59.0 69.0 58
81.7	67.5	67.2	1.0 0.625 0.0	73.6 11.0 76.1 76.9 81.7	1.0 0.442 0.0	64.5 27.8 64.5 70.2 66
88.5	75.0	75.6	1.0 0.75 0.0	79.2 2.0 83.0 83.1 88.5	1.0 0.55 0.0	69.8 18.3 71.3 73.6 75
93.6	82.5	83.9	1.0 0.875 0.0	84.2 -5.7 89.4 89.6 93.6	1.0 0.655 0.0	75.0 9.0 77.9 78.5 83
97.1	90.0	92.3	1.0 1.0 0.0	88.3 -11.9 95.1 95.8 97.1	1.0 0.842 0.0	83.0 -3.4 87.8 87.9 92
100.3	97.5	101.0	0.875 1.0 0.0	85.8 -16.2 88.6 90.0 100.3	0.871 1.0 0.0	85.8 -16.2 88.4 89.9 100
103.3	105.0	109.7	0.75 1.0 0.0	82.9 -19.7 83.0 85.3 103.3	0.599 1.0 0.0	76.2 -26.6 74.3 78.9 109
108.3	112.5	118.5	0.625 1.0 0.0	77.0 -25.2 76.3 80.4 108.3	0.455 1.0 0.0	71.4 -33.4 63.2 71.6 117
115.3	120.0	127.2	0.5 1.0 0.0	72.7 -31.3 66.0 73.1 115.3	0.327 1.0 0.0	65.8 -41.3 54.4 68.4 127
122.4	127.5	136.0	0.375 1.0 0.0	68.9 -36.9 58.1 68.8 122.4	0.244 1.0 0.0	60.7 -48.1 47.5 67.6 135
134.9	135.0	144.7	0.25 1.0 0.0	60.8 -47.8 47.8 67.6 134.9	0.124 1.0 0.0	57.4 -54.9 38.9 67.4 144
144.6	142.5	153.4	0.125 1.0 0.0	57.4 -54.9 38.9 67.3 144.6	0.047 1.0 0.0	54.0 -63.8 32.7 71.7 152
157.7	150.0	162.2	0.0 1.0 0.0	51.9 -68.8 28.1 74.3 157.7	0.0 1.0 0.093	52.4 -67.0 21.5 70.5 162
163.7	157.5	169.0	0.0 1.0 0.125	52.5 -66.4 19.3 69.1 163.7	0.0 1.0 0.209	53.1 -63.5 12.8 64.9 168
170.9	165.0	175.9	0.0 1.0 0.25	53.2 -61.9 9.8 62.7 170.9	0.0 1.0 0.311	53.7 -59.7 4.3 59.9 175
181.0	172.5	182.7	0.0 1.0 0.375	54.1 -56.9 -1.0 56.9 181.0	0.0 1.0 0.387	54.2 -56.4 -2.2 56.5 182
193.5	180.0	189.6	0.0 1.0 0.5	54.8 -51.0 -12.3 52.5 193.5	0.0 1.0 0.46	54.6 -53.1 -8.9 54.0 189
205.9	187.5	196.4	0.0 1.0 0.625	55.8 -45.1 -21.9 50.1 205.9	0.0 1.0 0.524	55.0 -50.0 -14.3 52.1 195
218.4	195.0	203.2	0.0 1.0 0.75	56.7 -38.9 -30.9 49.7 218.4	0.0 1.0 0.598	55.6 -46.5 -19.9 50.7 203
227.3	202.5	210.1	0.0 1.0 0.875	57.5 -34.3 -37.2 50.6 227.3	0.0 1.0 0.662	56.1 -43.4 -24.7 50.1 209
236.1	210.0	216.9	0.0 1.0 1.0	58.3 -29.2 -43.7 52.6 236.1	0.0 1.0 0.736	56.7 -39.7 -29.9 49.8 216
240.3	217.5	223.8	0.0 0.875 1.0	55.2 -25.0 -43.9 50.5 240.3	0.0 1.0 0.819	57.2 -36.4 -34.4 50.3 223
245.8	225.0	230.6	0.0 0.75 1.0	51.7 -19.7 -44.1 48.3 245.8	0.0 1.0 0.922	57.9 -32.5 -39.7 51.4 230
252.5	232.5	237.5	0.0 0.625 1.0	47.7 -13.9 -44.4 46.5 252.5	0.0 0.974 1.0	57.7 -28.3 -43.7 52.2 237
262.3	240.0	244.3	0.0 0.5 1.0	42.7 -6.0 -45.0 45.4 262.3	0.0 0.785 1.0	52.7 -21.1 -44.1 49.0 244
271.7	247.5	251.2	0.0 0.375 1.0	37.9 1.3 -45.4 45.4 271.7	0.0 0.659 1.0	48.9 -15.4 -44.3 47.1 250
281.6	255.0	258.0	0.0 0.25 1.0	33.3 9.4 -46.0 47.0 281.6	0.0 0.555 1.0	45.0 -9.4 -44.8 45.9 258
290.3	262.5	264.8	0.0 0.125 1.0	28.6 17.4 -46.9 50.1 290.3	0.0 0.472 1.0	41.7 -4.3 -45.1 45.4 264
296.4	270.0	271.7	0.0 0.0 1.0	25.3 23.5 -47.3 52.8 296.4	0.0 0.375 1.0	37.9 1.4 -45.3 45.5 271
306.7	277.5	278.8	0.125 0.0 1.0	29.3 31.8 -42.6 53.1 306.7	0.0 0.291 1.0	34.9 6.8 -45.9 46.5 278
312.7	285.0	285.9	0.25 0.0 1.0	31.5 36.2 -39.2 53.4 312.7	0.0 0.188 1.0	31.0 13.3 -46.6 48.5 285
326.7	292.5	293.0	0.375 0.0 1.0	33.8 47.6 -31.2 56.9 326.7	0.0 0.079 1.0	27.4 19.6 -47.1 51.1 292
333.9	300.0	300.1	0.5 0.0 1.0	37.8 53.8 -26.3 59.9 333.9	0.046 0.0 1.0	26.8 26.6 -45.7 53.0 300
339.6	307.5	307.2	0.625 0.0 1.0	40.9 58.8 -21.8 62.7 339.6	0.0 0.126 1.0	29.4 31.9 -42.5 53.2 306
347.2	315.0	314.3	0.75 0.0 1.0	43.1 65.9 -14.9 67.6 347.2	0.265 0.0 1.0	31.8 37.7 -38.4 53.8 314
350.2	322.5	321.4	0.875 0.0 1.0	45.9 69.4 -11.9 70.5 350.2	0.324 0.0 1.0	32.9 43.2 -34.8 55.5 321
353.3	330.0	328.6	1.0 0.0 1.0	48.2 72.8 -8.5 73.3 353.3	0.407 0.0 1.0	34.9 49.3 -30.0 57.7 328
356.5	337.5	335.7	1.0 0.0 0.875	48.2 71.6 -4.3 71.7 356.5	0.529 0.0 1.0	38.6 55.0 -25.3 60.6 335
360.3	345.0	342.8	1.0 0.0 0.75	48.1 70.4 0.3 70.4 360.3	0.678 0.0 1.0	41.9 61.9 -19.0 64.8 342
365.8	352.5	349.9	1.0 0.0 0.625	48.0 68.9 7.1 69.3 365.8	0.842 0.0 1.0	45.2 68.6 -12.7 69.8 349
371.6	360.0	357.0	1.0 0.0 0.5	47.7 67.7 14.0 69.1 371.6	0.949 0.0 1.0	47.3 71.5 -9.9 72.2 352
378.2	367.5	364.1	1.0 0.0 0.375	47.7 66.1 21.8 69.6 378.2	1.0 0.0 0.765	48.2 70.6 -0.1 70.6 359
383.9	375.0	371.2	1.0 0.0 0.25	47.7 65.0 28.9 71.2 383.9	1.0 0.0 0.563	47.9 68.4 10.6 69.2 368
388.6	382.5	378.3	1.0 0.0 0.125	47.4 64.4 35.1 73.4 388.6	1.0 0.0 0.408	47.8 66.7 19.8 69.6 376
392.8	390.0	385.4	1.0 0.0 0.0	47.3 63.8 41.2 76.0 392.8	1.0 0.0 0.209	47.6 64.9 30.9 71.9 385



voir fichiers similaires: <http://130.149.60.45/~farbmetrik/RF05/RF05.LOFP.PDF> / .PS
informations techniques: <http://www.ps.bam.de> ou <http://130.149.60.45/~farbmetrik>

TUB enregistrement: 20130201-RF05/RF05LOFP.PDF /.PS
application pour la mesure des sorties sur offset, séparation cmy6* (CMYK)
TUB matériel: code=rh4ta

Couleur maximale dans le système colorimétrique : Offset standard print; separation cmy6*, D65 pour l'entrée et sortie; Six angles de teinte à 60 degrés couleurs standard *RYGCBM_s*; $h_{ab,ds} = 30.0, 90.0, 150.0, 210.0, 270.0, 330.0$;
Six angles de teinte des couleurs périphériques *RYGCBM_d*; $h_{ab,d} = 32.8, 97.2, 157.8, 236.2, 296.4, 353.3$; Six angles de teinte des couleurs élémentaires *RYGCBM_c*; $h_{ab,e} = 25.5, 92.3, 162.2, 217.0, 271.7, 328.6$

$h_{ab,d}$	$h_{ab,s}$	$h_{ab,e}$	rgb^*_d	$dd361M$	LAB^*_d	$dx361Mi$	$(x=LabCh)$	R_d	rgb^*_s	$ds361Mi$	LAB^*_s	$dsx361Mi$	$(x=LabCh)$	R_s	rgb^*_e	$de361Mi$	LAB^*_e	$dex361Mi$	$(x=LabCh)$	R_e	rgb^*_d	$dd361Mi$	rgb^*_s	$ds361Mi$	rgb^*_e	$de361Mi$									
32	30	25	1.0	0.0	0.0	47.3	63.8	41.2	76.0	32	1.0	0.0	0.084	47.4	64.3	37.1	74.3	30	1.0	0.0	0.0	1.0	0.0	0.0	1.0	0.0	0.18	47.6	64.8	32.4	72.5	26	1.0	0.017	0.0
33	31	26	1.0	0.016	0.0	47.8	62.7	42.0	75.4	33	1.0	0.0	0.054	47.4	64.2	38.6	74.9	31	1.0	0.017	0.0	1.0	0.0	0.0	1.0	0.0	0.15	47.5	64.6	33.9	73.0	27	1.0	0.033	0.0
34	32	27	1.0	0.033	0.0	48.3	61.5	42.8	74.9	34	1.0	0.0	0.025	47.4	64.0	40.0	75.5	32	1.0	0.033	0.0	1.0	0.0	0.0	1.0	0.0	0.119	47.5	64.4	35.5	73.6	28	1.0	0.05	0.0
35	33	28	1.0	0.05	0.0	48.9	60.3	43.6	74.4	35	1.0	0.0003	0.0	47.5	63.7	41.3	75.9	33	1.0	0.005	0.0	1.0	0.0	0.0	1.0	0.0	0.086	47.4	64.3	37.0	74.2	29	1.0	0.067	0.0
36	34	29	1.0	0.066	0.0	49.4	59.1	44.3	73.9	36	1.0	0.0019	0.0	48.0	62.5	42.2	75.4	34	1.0	0.067	0.0	1.0	0.0	0.0	1.0	0.0	0.053	47.4	64.2	38.6	74.9	31	1.0	0.083	0.0
37	35	31	1.0	0.083	0.0	49.9	57.9	45.1	73.4	37	1.0	0.0036	0.0	48.5	61.4	43.0	74.9	35	1.0	0.083	0.0	1.0	0.0	0.0	1.0	0.0	0.02	47.4	64.0	40.2	75.6	32	1.0	0.1	0.0
38	36	32	1.0	0.1	0.0	50.4	56.7	45.7	72.9	38	1.0	0.0052	0.0	49.0	60.2	43.7	74.4	36	1.0	0.1	0.0	1.0	0.0	0.0	1.0	0.0	0.007	47.6	63.4	41.6	75.8	33	1.0	0.117	0.0
39	37	33	1.0	0.116	0.0	50.9	55.5	46.4	72.3	39	1.0	0.0069	0.0	49.5	59.0	44.5	73.9	37	1.0	0.117	0.0	1.0	0.0007	0.0	1.0	0.0	0.026	48.2	62.1	42.5	75.2	34	1.0	0.133	0.0
41	38	34	1.0	0.133	0.0	51.5	54.2	47.2	71.9	41	1.0	0.0085	0.0	50.0	57.8	45.2	73.4	38	1.0	0.133	0.0	1.0	0.0026	0.0	1.0	0.0	0.044	48.7	60.8	43.4	74.6	35	1.0	0.15	0.0
42	39	35	1.0	0.15	0.0	52.1	52.8	48.1	71.5	42	1.0	0.0101	0.0	50.5	56.6	45.9	72.9	39	1.0	0.15	0.0	1.0	0.0044	0.0	1.0	0.0	0.062	49.3	59.5	44.2	74.1	36	1.0	0.167	0.0
43	40	36	1.0	0.166	0.0	52.8	51.4	49.0	71.1	43	1.0	0.0118	0.0	51.0	55.4	46.5	72.4	40	1.0	0.167	0.0	1.0	0.0062	0.0	1.0	0.0	0.081	49.8	58.1	45.0	73.5	37	1.0	0.183	0.0
44	41	37	1.0	0.183	0.0	53.4	50.1	49.9	70.7	44	1.0	0.0132	0.0	51.5	54.3	47.2	72.0	41	1.0	0.183	0.0	1.0	0.0081	0.0	1.0	0.0	0.099	50.4	56.8	45.8	72.9	38	1.0	0.2	0.0
46	42	38	1.0	0.2	0.0	54.1	48.7	50.7	70.3	46	1.0	0.0145	0.0	52.0	53.2	47.9	71.7	42	1.0	0.2	0.0	1.0	0.0099	0.0	1.0	0.0	0.117	51.0	55.5	46.5	72.4	39	1.0	0.217	0.0
47	43	39	1.0	0.216	0.0	54.7	47.3	51.5	69.9	47	1.0	0.0158	0.0	52.5	52.2	48.7	71.3	43	1.0	0.217	0.0	1.0	0.0117	0.0	1.0	0.0	0.133	51.5	54.2	47.3	71.9	41	1.0	0.233	0.0
48	44	41	1.0	0.233	0.0	55.3	45.8	52.2	69.5	48	1.0	0.0172	0.0	53.0	51.1	49.3	71.0	44	1.0	0.233	0.0	1.0	0.0133	0.0	1.0	0.0	0.148	52.1	53.0	48.1	71.6	42	1.0	0.25	0.0
50	45	42	1.0	0.25	0.0	56.0	44.4	53.0	69.1	50	1.0	0.0185	0.0	53.5	50.0	50.0	70.7	45	1.0	0.25	0.0	1.0	0.0148	0.0	1.0	0.0	0.162	52.7	51.9	48.9	71.2	43	1.0	0.267	0.0
51	46	43	1.0	0.266	0.0	56.7	43.0	54.1	69.1	51	1.0	0.0198	0.0	54.0	48.9	50.7	70.4	46	1.0	0.267	0.0	1.0	0.0162	0.0	1.0	0.0	0.177	53.2	50.6	49.6	70.9	44	1.0	0.283	0.0
52	47	44	1.0	0.283	0.0	57.4	41.5	55.1	69.1	52	1.0	0.0211	0.0	54.5	47.8	51.3	70.1	47	1.0	0.283	0.0	1.0	0.0177	0.0	1.0	0.0	0.191	53.8	49.4	50.4	70.6	45	1.0	0.3	0.0
54	48	45	1.0	0.3	0.0	58.2	40.1	56.2	69.0	54	1.0	0.0224	0.0	55.0	46.7	51.9	69.8	48	1.0	0.3	0.0	1.0	0.0191	0.0	1.0	0.0	0.206	54.3	48.2	51.1	70.2	46	1.0	0.317	0.0
55	49	46	1.0	0.316	0.0	58.9	38.6	57.1	69.0	55	1.0	0.0237	0.0	55.5	45.6	52.4	69.5	49	1.0	0.317	0.0	1.0	0.0206	0.0	1.0	0.0	0.22	54.9	47.0	51.7	69.9	47	1.0	0.333	0.0
57	50	47	1.0	0.333	0.0	59.6	37.1	58.1	68.9	57	1.0	0.025	0.0	56.0	44.5	53.0	69.2	50	1.0	0.333	0.0	1.0	0.022	0.0	1.0	0.0	0.235	55.5	45.7	52.4	69.5	48	1.0	0.35	0.0
58	51	48	1.0	0.35	0.0	60.3	35.5	59.0	68.9	58	1.0	0.0261	0.0	56.5	43.5	53.7	69.2	51	1.0	0.35	0.0	1.0	0.0235	0.0	1.0	0.0	0.25	56.0	44.5	53.0	69.2	49	1.0	0.367	0.0
60	52	49	1.0	0.366	0.0	61.0	34.0	59.9	68.9	60	1.0	0.0272	0.0	57.0	42.6	54.5	69.1	52	1.0	0.367	0.0	1.0	0.025	0.0	1.0	0.0	0.262	56.6	43.4	53.8	69.1	51	1.0	0.383	0.0
61	53	51	1.0	0.383	0.0	61.8	32.5	60.8	69.0	61	1.0	0.0283	0.0	57.5	41.6	55.2	69.1	53	1.0	0.383	0.0	1.0	0.0262	0.0	1.0	0.0	0.275	57.1	42.4	54.6	69.1	52	1.0	0.4	0.0
63	54	52	1.0	0.4	0.0	62.5	31.2	61.9	69.3	63	1.0	0.0295	0.0	58.0	40.6	55.9	69.1	54	1.0	0.4	0.0	1.0	0.0275	0.0	1.0	0.0	0.287	57.6	41.3	55.4	69.1	53	1.0	0.417	0.0
64	55	53	1.0	0.416	0.0	63.3	29.8	62.9	69.6	64	1.0	0.0306	0.0	58.5	39.6	56.6	69.1	55	1.0	0.417	0.0	1.0	0.0287	0.0	1.0	0.0	0.3	58.2	40.2	56.2	69.1	54	1.0	0.433	0.0
65	56	54	1.0	0.433	0.0	64.1	28.4	63.9	70.0	65	1.0	0.0317	0.0	58.9	38.6	57.2	69.0	56	1.0	0.433	0.0	1.0	0.03	0.0	1.0	0.0	0.312	58.7	39.0	56.9	69.0	55	1.0	0.45	0.0
67	57	55	1.0	0.45	0.0	64.9	27.0	64.9	70.3	67	1.0	0.0328	0.0	59.4	37.6	57.9	69.0	57	1.0	0.45	0.0	1.0	0.0312	0.0	1.0	0.0	0.325	59.3	37.9	57.7	69.0	56	1.0	0.467	0.0
68	58	56	1.0	0.466	0.0	65.6	25.6	65.8	70.6	68	1.0	0.034	0.0	59.9	36.6	58.5	69.0	58	1.0	0.467	0.0	1.0	0.0325	0.0	1.0	0.0	0.337	59.8	36.8	58.4	69.0	57	1.0	0.483	0.0
70	59	57	1.0	0.483	0.0	66.4	24.1	66.7	70.9	70	1.0	0.0351	0.0	60.4	35.5	59.1	69.0	59	1.0	0.483	0.0	1.0	0.0337	0.0	1.0	0.0	0.35	60.3	35.6	59.0	69.0	58	1.0	0.5	0.0
71	60	58	1.0	0.5	0.0	67.2	22.6	67.6	71.2	71	1.0	0.0362	0.0	60.9	34.5	59.7	68.9	60	1.0	0.5	0.0	1.0	0.035	0.0	1.0	0.0	0.362	60.9	34.5	59.7	68.9	60	1.0	0.517	0.0
72	61	60	1.0	0.516	0.0	68.0	21.2	68.8	72.0	72	1.0	0.0373	0.0	61.4	33.4	60.3	68.9	61	1.0	0.517	0.0	1.0	0.0362	0.0	1.0	0.0	0.375	61.4	33.3	60.3	68.9	61	1.0	0.533	0.0
74	62	61	1.0	0.533	0.0	68.9	19.7	70.0	72.8	74	1.0	0.0385	0.0	61.9	32.4	61.0	69.1	62	1.0	0.533	0.0	1.0	0.0375	0.0	1.0	0.0	0.388	62.0	32.2	61.2	69.1	62	1.0	0.55	0.0
75	63	62	1.0	0.55	0.0	69.7	18.2	71.2	73.5	75	1.0	0.0397	0.0	62.5	31.5	61.8	69.3	63	1.0	0.55	0.0	1.0	0.0388	0.0	1.0	0.0	0.402	62.7	31.1	62.0	69.4	63	1.0	0.567	0.0
76	64	63	1.0	0.566	0.0	70.6	16.7	72.4	74.3	76	1.0	0.0409	0.0	63.0	30.5	62.5	69.6	64	1.0	0.567	0.0	1.0	0.0402	0.0	1.0	0.0	0.415	63.3	30.0	62.9	69.7	64	1.0	0.583	0.0
78	65	64	1.0	0.583	0.0	71.5	15.1	73.5	75.0	78	1.0	0.0421	0.0	63.6	29.5	63.2	69.8	65	1.0	0.583	0.0	1.0	0.0415	0.0	1.0	0.0	0.428	63.9	28.9	63.7	69.9	65	1.0	0.6	0.0
79	66	65	1.0	0.6	0.0	72.3	13.5	74.6	75.8	79	1.0	0.0434	0.0	64.2	28.5	64.0	70.0	66	1.0	0.6	0.0	1.0	0.0428	0.0	1.0	0.0	0.442	64.5	27.8	64.5	70.2	66	1.0	0.617	0.0
81	67	66																																	

Couleur maximale dans le système colorimétrique : Offset standard print; separation cmy6*, D65 pour l'entrée et sortie; Six angles de teinte à 60 degrés couleurs standard *RYGCBM_s*; *h_{ab,ds}* = 30.0, 90.0, 150.0, 210.0, 270.0, 330.0; Six angles de teinte des couleurs périphériques *RYGCBM_d*; *h_{ab,d}* = 32.8, 97.2, 157.8, 236.2, 296.4, 353.3; Six angles de teinte des couleurs élémentaires *RYGCBM_e*; *h_{ab,e}* = 25.5, 92.3, 162.2, 217.0, 271.7, 328.6

<i>h_{ab,d}</i>	<i>h_{ab,s}</i>	<i>h_{ab,e}</i>	<i>rgb[*]_{dd361M}</i>	<i>LAB[*]_{dsx361Mi}</i> (x=LabCh)	<i>rgb[*]_{ds361Mi}</i>	<i>LAB[*]_{dsx361Mi}</i> (x=LabCh)	<i>rgb[*]_{de361Mi}</i>	<i>LAB[*]_{dex361Mi}</i> (x=LabCh)	<i>rgb[*]_{dd361Mi}</i>	<i>LAB[*]_{dsx361Mi}</i> (x=LabCh)	<i>rgb[*]_{de361Mi}</i>	<i>LAB[*]_{dex361Mi}</i> (x=LabCh)	<i>rgb[*]_{dd361Mi}</i>	<i>LAB[*]_{dex361Mi}</i> (x=LabCh)																																
88	75	75	1.0	0.75	0.0	79.2	2.0	83.0	83.1	88	1.0	0.543	0.0	69.4	19.0	70.7	73.2	75	1.0	0.75	0.0	1.0	0.555	0.0	70.0	17.9	71.6	73.8	76	1.0	0.767	0.0	1.0	0.564	0.0	70.5	17.0	72.2	74.2	76	1.0	0.767	0.0			
89	76	76	1.0	0.766	0.0	79.9	1.0	83.9	83.9	89	1.0	0.567	0.0	70.7	16.7	72.4	74.3	77	1.0	0.783	0.0	1.0	0.577	0.0	71.2	15.8	73.1	74.8	77	1.0	0.783	0.0	1.0	0.577	0.0	71.2	15.8	73.1	74.8	77	1.0	0.783	0.0			
89	77	77	1.0	0.783	0.0	80.6	0.0	84.8	84.8	89	1.0	0.579	0.0	71.3	15.6	73.3	74.9	78	1.0	0.8	0.0	1.0	0.591	0.0	71.9	14.5	74.0	75.4	78	1.0	0.8	0.0	1.0	0.591	0.0	71.9	14.5	74.0	75.4	78	1.0	0.8	0.0			
90	78	78	1.0	0.8	0.0	81.2	-0.9	85.7	85.7	90	1.0	0.591	0.0	71.9	14.4	74.1	75.5	79	1.0	0.817	0.0	1.0	0.604	0.0	72.6	13.1	74.9	76.0	80	1.0	0.817	0.0	1.0	0.604	0.0	72.6	13.1	74.9	76.0	80	1.0	0.817	0.0			
91	79	80	1.0	0.816	0.0	81.9	-1.9	86.5	86.5	91	1.0	0.604	0.0	72.5	13.2	74.9	76.0	80	1.0	0.833	0.0	1.0	0.618	0.0	73.3	11.8	75.8	76.7	81	1.0	0.833	0.0	1.0	0.618	0.0	73.3	11.8	75.8	76.7	81	1.0	0.833	0.0			
91	80	81	1.0	0.833	0.0	82.6	-3.0	87.4	87.4	91	1.0	0.616	0.0	73.2	12.0	75.6	76.6	81	1.0	0.85	0.0	1.0	0.635	0.0	74.1	10.4	76.8	77.5	82	1.0	0.85	0.0	1.0	0.635	0.0	74.1	10.4	76.8	77.5	82	1.0	0.85	0.0			
92	81	82	1.0	0.85	0.0	83.2	-4.0	88.2	88.3	92	1.0	0.629	0.0	73.8	10.7	76.5	77.2	82	1.0	0.867	0.0	1.0	0.655	0.0	75.0	9.0	77.9	78.5	83	1.0	0.867	0.0	1.0	0.655	0.0	75.0	9.0	77.9	78.5	83	1.0	0.867	0.0			
93	82	83	1.0	0.866	0.0	83.9	-5.1	89.0	89.2	93	1.0	0.648	0.0	74.7	9.5	77.5	78.1	83	1.0	0.883	0.0	1.0	0.675	0.0	75.9	7.6	79.1	79.5	84	1.0	0.883	0.0	1.0	0.675	0.0	75.9	7.6	79.1	79.5	84	1.0	0.883	0.0			
93	83	84	1.0	0.883	0.0	84.5	-6.1	89.8	90.0	93	1.0	0.666	0.0	75.5	8.3	78.6	79.0	84	1.0	0.9	0.0	1.0	0.696	0.0	76.8	6.1	80.2	80.5	85	1.0	0.9	0.0	1.0	0.696	0.0	76.8	6.1	80.2	80.5	85	1.0	0.9	0.0			
94	84	85	1.0	0.9	0.0	85.1	-6.9	90.6	90.8	94	1.0	0.684	0.0	76.3	7.0	79.6	79.9	85	1.0	0.917	0.0	1.0	0.716	0.0	77.8	4.6	81.3	81.5	86	1.0	0.917	0.0	1.0	0.716	0.0	77.8	4.6	81.3	81.5	86	1.0	0.917	0.0			
94	85	86	1.0	0.916	0.0	85.6	-7.7	91.3	91.7	94	1.0	0.703	0.0	77.1	5.6	80.6	80.8	86	1.0	0.933	0.0	1.0	0.736	0.0	78.7	3.1	82.4	82.5	87	1.0	0.933	0.0	1.0	0.736	0.0	78.7	3.1	82.4	82.5	87	1.0	0.933	0.0			
95	86	87	1.0	0.933	0.0	86.1	-8.5	92.1	92.5	95	1.0	0.721	0.0	78.0	4.3	81.6	81.7	87	1.0	0.95	0.0	1.0	0.759	0.0	79.7	1.5	83.6	83.6	88	1.0	0.95	0.0	1.0	0.759	0.0	79.7	1.5	83.6	83.6	88	1.0	0.95	0.0			
95	87	88	1.0	0.95	0.0	86.7	-9.3	92.9	93.3	95	1.0	0.739	0.0	78.8	2.9	82.5	82.6	88	1.0	0.967	0.0	1.0	0.787	0.0	80.8	0.0	85.0	85.0	90	1.0	0.967	0.0	1.0	0.787	0.0	80.8	0.0	85.0	85.0	90	1.0	0.967	0.0			
96	88	90	1.0	0.966	0.0	87.2	-10.2	93.6	94.2	96	1.0	0.76	0.0	79.7	1.5	83.6	83.6	89	1.0	0.983	0.0	1.0	0.814	0.0	81.9	-1.7	86.5	86.5	91	1.0	0.983	0.0	1.0	0.814	0.0	81.9	-1.7	86.5	86.5	91	1.0	0.983	0.0			
96	89	91	1.0	0.983	0.0	87.8	-11.1	94.3	95.0	96	1.0	0.785	0.0	80.7	0.0	84.9	84.9	90	1.0	1.0	0.0	1.0	0.842	0.0	83.0	-3.4	87.8	87.9	92	1.0	1.0	0.0	1.0	0.842	0.0	83.0	-3.4	87.8	87.9	92	1.0	1.0	0.0			
97	90	92	1.0	1.0	0.0	88.3	-11.9	95.1	95.8	97	1.0	0.809	0.0	81.7	-1.4	86.2	86.2	91	1.0	0.983	1.0	0.0	1.0	0.871	0.0	84.1	-5.3	89.2	89.4	93	1.0	0.983	1.0	0.0	1.0	0.871	0.0	84.1	-5.3	89.2	89.4	93	1.0	0.983	1.0	0.0
97	91	93	0.983	1.0	0.0	88.0	-12.5	94.2	95.1	97	1.0	0.834	0.0	82.7	-3.0	87.5	87.5	92	1.0	0.967	1.0	0.0	1.0	0.91	0.0	85.4	-7.3	91.1	91.4	94	1.0	0.967	1.0	0.0	1.0	0.91	0.0	85.4	-7.3	91.1	91.4	94	1.0	0.967	1.0	0.0
98	92	94	0.966	1.0	0.0	87.7	-13.1	93.4	94.3	98	1.0	0.859	0.0	83.6	-4.5	88.7	88.8	93	1.0	0.95	1.0	0.0	1.0	0.951	0.0	86.8	-9.4	93.0	93.4	95	1.0	0.95	1.0	0.0	1.0	0.951	0.0	86.8	-9.4	93.0	93.4	95	1.0	0.95	1.0	0.0
98	93	95	0.95	1.0	0.0	87.3	-13.7	92.5	93.5	98	1.0	0.887	0.0	84.7	-6.2	90.0	90.3	94	1.0	0.933	1.0	0.0	1.0	0.993	0.0	88.1	-11.5	94.8	95.5	96	1.0	0.933	1.0	0.0	1.0	0.993	0.0	88.1	-11.5	94.8	95.5	96	1.0	0.933	1.0	0.0
98	94	96	0.933	1.0	0.0	87.0	-14.3	91.6	92.7	98	1.0	0.923	0.0	85.8	-7.9	91.7	92.0	95	1.0	0.917	1.0	0.0	1.0	0.963	1.0	0.0	87.6	-13.2	93.2	94.1	98	1.0	0.917	1.0	0.0	1.0	0.963	1.0	0.0	1.0	0.917	1.0	0.0			
99	95	98	0.916	1.0	0.0	86.6	-14.8	90.8	92.0	99	1.0	0.958	0.0	87.0	-9.7	93.3	93.8	96	1.0	0.9	1.0	0.0	1.0	0.917	1.0	0.0	86.7	-14.8	90.8	92.0	99	1.0	0.9	1.0	0.0	1.0	0.917	1.0	0.0	1.0	0.9	1.0	0.0			
99	96	99	0.9	1.0	0.0	86.3	-15.4	89.9	91.2	99	1.0	0.994	0.0	88.2	-11.5	94.8	95.6	97	1.0	0.883	1.0	0.0	1.0	0.871	1.0	0.0	85.8	-16.2	88.4	89.9	100	1.0	0.883	1.0	0.0	1.0	0.871	1.0	0.0	1.0	0.883	1.0	0.0			
100	97	100	0.883	1.0	0.0	86.0	-15.9	89.0	90.4	100	1.0	0.968	1.0	0.0	87.7	-13.0	93.5	94.4	98	1.0	0.867	1.0	0.0	1.0	0.823	1.0	0.0	84.7	-17.7	86.3	88.1	101	1.0	0.867	1.0	0.0	1.0	0.823	1.0	0.0						
100	98	101	0.866	1.0	0.0	85.6	-16.4	88.2	89.7	100	1.0	0.929	1.0	0.0	86.9	-14.4	91.4	92.6	99	1.0	0.85	1.0	0.0	1.0	0.774	1.0	0.0	83.5	-19.0	84.1	86.2	102	1.0	0.85	1.0	0.0	1.0	0.774	1.0	0.0						
100	99	102	0.85	1.0	0.0	85.2	-16.9	87.4	89.1	100	1.0	0.89	1.0	0.0	86.2	-15.7	89.4	90.8	100	1.0	0.833	1.0	0.0	1.0	0.735	1.0	0.0	82.3	-20.3	82.2	84.7	103	1.0	0.833	1.0	0.0	1.0	0.735	1.0	0.0						
101	100	103	0.833	1.0	0.0	84.8	-17.4	86.7	88.4	101	1.0	0.849	1.0	0.0	85.3	-16.9	87.5	89.1	101	1.0	0.817	1.0	0.0	1.0	0.706	1.0	0.0	80.9	-21.7	80.7	83.6	105	1.0	0.817	1.0	0.0	1.0	0.706	1.0	0.0						
101	101	105	0.816	1.0	0.0	84.5	-17.9	86.0	87.8	101	1.0	0.807	1.0	0.0	84.3	-18.1	85.6	87.5	102	1.0	0.8	1.0	0.0	1.0	0.676	1.0	0.0	79.5	-23.0	79.1	82.4	106	1.0	0.8	1.0	0.0	1.0	0.676	1.0	0.0						
102	102	106	0.8	1.0	0.0	84.1	-18.3	85.2	87.2	102	1.0	0.765	1.0	0.0	83.3	-19.2	83.7	85.9	103	1.0	0.783	1.0	0.0	1.0	0.647	1.0	0.0	78.1	-24.3	77.5	81.3	107	1.0	0.783	1.0	0.0	1.0	0.647	1.0	0.0						
102	103	107	0.783	1.0	0.0	83.7	-18.8	84.5	86.5	102	1.0	0.734	1.0	0.0	82.2	-20.4	82.2	84.7	104	1.0	0.767	1.0	0.0	1.0	0.62	1.0	0.0	76.9	-25.5	75.9	80.1	108	1.0	0.767	1.0	0.0	1.0	0.62	1.0	0.0						
102	104	108	0.766	1.0	0.0	83.3	-19.2	83.7	85.9	102	1.0	0.709	1.0	0.0	81.0	-21.6	80.9	83.7	105	1.0	0.75	1.0	0.0	1.0	0.599	1.0	0.0	76.2	-26.6	74.3	78.9	109	1.0	0.75	1.0	0.0	1.0	0.599	1.0	0.0						
103	105	109	0.75	1.0	0.0	82.9	-19.7	83.0	85.3	103	1.0	0.684	1.0	0.0	79.9	-22.7	79.5	82.7	106	1.0	0.733	1.0	0.0	1.0	0.578	1.0	0.0	75.5	-27.7	72.6	77.7	110	1.0	0.733												

Couleur maximale dans le système colorimétrique : Offset standard print; séparation cmy6*, D65 pour l'entrée et sortie; Six angles de teinte à 60 degrés couleurs standard *RYGCBM_s*; *h_{ab,ds}* = 30.0, 90.0, 150.0, 210.0, 270.0, 330.0; Six angles de teinte des couleurs périphériques *RYGCBM_d*; *h_{ab,d}* = 32.8, 97.2, 157.8, 236.2, 296.4, 353.3; Six angles de teinte des couleurs élémentaires *RYGCBM_e*; *h_{ab,e}* = 25.5, 92.3, 162.2, 217.0, 271.7, 328.6

<i>h_{ab,d}</i>	<i>h_{ab,s}</i>	<i>h_{ab,e}</i>	<i>rgb*_{dd361M}</i>	<i>LAB*_{dsx361Mi}</i> (x=LabCh)	<i>rgb*_{ds361Mi}</i>	<i>LAB*_{dsx361Mi}</i> (x=LabCh)	<i>rgb*_{dd361Mi}</i>	<i>LAB*_{de361Mi}</i> (x=LabCh)	<i>rgb*_{dd361Mi}</i>	<i>LAB*_{dex361Mi}</i> (x=LabCh)	<i>rgb*_{dd361Mi}</i>	<i>rgb*_{dd}</i>	<i>rgb*_{ds}</i>	<i>rgb*_{de}</i>																		
115	120	127	0.5	1.0	0.0	72.7	-31.3	66.0	73.1	115	0.418	1.0	0.0	70.3	-35.1	60.9	70.3	120	0.5	1.0	0.0	0.327	1.0	0.0	65.8	-41.3	54.4	68.4	127	0.5	1.0	0.0
116	121	128	0.483	1.0	0.0	72.2	-32.1	65.0	72.5	116	0.4	1.0	0.0	69.7	-35.8	59.8	69.7	121	0.483	1.0	0.0	0.315	1.0	0.0	65.1	-42.3	53.5	68.3	128	0.483	1.0	0.0
117	122	129	0.466	1.0	0.0	71.7	-32.9	63.9	71.9	117	0.383	1.0	0.0	69.2	-36.5	58.6	69.1	122	0.467	1.0	0.0	0.303	1.0	0.0	64.3	-43.3	52.5	68.2	129	0.467	1.0	0.0
118	123	130	0.45	1.0	0.0	71.2	-33.7	62.9	71.4	118	0.369	1.0	0.0	68.5	-37.4	57.7	68.8	123	0.45	1.0	0.0	0.292	1.0	0.0	63.6	-44.3	51.5	68.1	130	0.45	1.0	0.0
119	124	131	0.433	1.0	0.0	70.7	-34.5	61.8	70.8	119	0.359	1.0	0.0	67.9	-38.3	56.9	68.7	124	0.433	1.0	0.0	0.28	1.0	0.0	62.8	-45.3	50.6	67.9	131	0.433	1.0	0.0
120	125	133	0.416	1.0	0.0	70.2	-35.2	60.8	70.2	120	0.349	1.0	0.0	67.3	-39.2	56.2	68.6	125	0.417	1.0	0.0	0.269	1.0	0.0	62.1	-46.2	49.5	67.8	133	0.417	1.0	0.0
121	126	134	0.4	1.0	0.0	69.6	-35.9	59.7	69.6	121	0.339	1.0	0.0	66.6	-40.2	55.4	68.5	126	0.4	1.0	0.0	0.257	1.0	0.0	61.3	-47.2	48.5	67.7	134	0.4	1.0	0.0
121	127	135	0.383	1.0	0.0	69.1	-36.5	58.6	69.1	121	0.329	1.0	0.0	66.0	-41.1	54.6	68.4	127	0.383	1.0	0.0	0.244	1.0	0.0	60.7	-48.1	47.5	67.6	135	0.383	1.0	0.0
123	128	136	0.366	1.0	0.0	68.3	-37.7	57.4	68.7	123	0.319	1.0	0.0	65.3	-42.0	53.8	68.3	128	0.367	1.0	0.0	0.229	1.0	0.0	60.3	-49.0	46.5	67.6	136	0.367	1.0	0.0
124	129	137	0.35	1.0	0.0	67.3	-39.2	56.2	68.6	124	0.309	1.0	0.0	64.7	-42.8	53.0	68.2	129	0.35	1.0	0.0	0.214	1.0	0.0	59.9	-49.9	45.4	67.6	137	0.35	1.0	0.0
126	130	138	0.333	1.0	0.0	66.2	-40.8	54.9	68.4	126	0.299	1.0	0.0	64.1	-43.7	52.2	68.1	130	0.333	1.0	0.0	0.199	1.0	0.0	59.5	-50.8	44.4	67.5	138	0.333	1.0	0.0
128	131	140	0.316	1.0	0.0	65.1	-42.3	53.6	68.2	128	0.289	1.0	0.0	63.4	-44.5	51.3	68.0	131	0.317	1.0	0.0	0.184	1.0	0.0	59.1	-51.7	43.3	67.5	140	0.317	1.0	0.0
129	132	141	0.3	1.0	0.0	64.0	-43.7	52.2	68.1	129	0.28	1.0	0.0	62.8	-45.4	50.5	67.9	132	0.3	1.0	0.0	0.169	1.0	0.0	58.6	-52.5	42.2	67.5	141	0.3	1.0	0.0
131	133	142	0.283	1.0	0.0	63.0	-45.1	50.8	67.9	131	0.27	1.0	0.0	62.1	-46.2	49.6	67.8	133	0.283	1.0	0.0	0.154	1.0	0.0	58.2	-53.3	41.1	67.4	142	0.283	1.0	0.0
133	134	143	0.266	1.0	0.0	61.9	-46.5	49.3	67.8	133	0.26	1.0	0.0	61.5	-47.0	48.7	67.8	134	0.267	1.0	0.0	0.139	1.0	0.0	57.8	-54.1	40.0	67.4	143	0.267	1.0	0.0
134	135	144	0.25	1.0	0.0	60.8	-47.8	47.8	67.6	134	0.249	1.0	0.0	60.9	-47.7	47.8	67.7	135	0.25	1.0	0.0	0.124	1.0	0.0	57.4	-54.9	38.9	67.4	144	0.25	1.0	0.0
136	136	145	0.233	1.0	0.0	60.4	-48.8	46.7	67.6	136	0.237	1.0	0.0	60.5	-48.5	47.0	67.6	136	0.233	1.0	0.0	0.113	1.0	0.0	56.9	-56.2	38.1	68.0	145	0.233	1.0	0.0
137	137	147	0.216	1.0	0.0	59.9	-49.8	45.6	67.5	137	0.224	1.0	0.0	60.1	-49.3	46.1	67.6	137	0.217	1.0	0.0	0.102	1.0	0.0	56.4	-57.5	37.3	68.6	147	0.217	1.0	0.0
138	138	148	0.2	1.0	0.0	59.4	-50.8	44.4	67.5	138	0.211	1.0	0.0	59.8	-50.1	45.2	67.6	138	0.2	1.0	0.0	0.091	1.0	0.0	55.9	-58.8	36.4	69.2	148	0.2	1.0	0.0
140	139	149	0.183	1.0	0.0	59.0	-51.8	43.2	67.4	140	0.198	1.0	0.0	59.4	-50.9	44.3	67.5	139	0.183	1.0	0.0	0.08	1.0	0.0	55.4	-60.0	35.6	69.9	149	0.183	1.0	0.0
141	140	150	0.166	1.0	0.0	58.5	-52.7	42.0	67.4	141	0.185	1.0	0.0	59.1	-51.6	43.4	67.5	140	0.167	1.0	0.0	0.069	1.0	0.0	55.0	-61.3	34.6	70.5	150	0.167	1.0	0.0
142	141	151	0.15	1.0	0.0	58.1	-53.6	40.8	67.4	142	0.172	1.0	0.0	58.7	-52.3	42.5	67.5	141	0.15	1.0	0.0	0.058	1.0	0.0	54.5	-62.5	33.7	71.1	151	0.15	1.0	0.0
144	142	152	0.133	1.0	0.0	57.6	-54.5	39.5	67.3	144	0.159	1.0	0.0	58.4	-53.0	41.5	67.4	142	0.133	1.0	0.0	0.047	1.0	0.0	54.0	-63.8	32.7	71.7	152	0.133	1.0	0.0
145	143	154	0.116	1.0	0.0	57.0	-55.9	38.3	67.8	145	0.147	1.0	0.0	58.0	-53.7	40.6	67.4	143	0.117	1.0	0.0	0.035	1.0	0.0	53.5	-65.0	31.7	72.4	154	0.117	1.0	0.0
147	144	155	0.1	1.0	0.0	56.3	-57.8	37.1	68.7	147	0.134	1.0	0.0	57.7	-54.4	39.6	67.4	144	0.1	1.0	0.0	0.024	1.0	0.0	53.0	-66.2	30.6	73.0	155	0.1	1.0	0.0
149	145	156	0.083	1.0	0.0	55.5	-59.7	35.8	69.6	149	0.122	1.0	0.0	57.3	-55.2	38.7	67.5	145	0.083	1.0	0.0	0.013	1.0	0.0	52.5	-67.4	29.5	73.6	156	0.083	1.0	0.0
150	146	157	0.066	1.0	0.0	54.8	-61.6	34.4	70.6	150	0.112	1.0	0.0	56.9	-56.3	38.1	68.0	146	0.067	1.0	0.0	0.002	1.0	0.0	52.0	-68.5	28.3	74.2	157	0.067	1.0	0.0
152	147	158	0.049	1.0	0.0	54.1	-63.4	32.9	71.5	152	0.103	1.0	0.0	56.4	-57.4	37.4	68.6	147	0.05	1.0	0.0	0.0	1.0	0.02	52.1	-68.4	26.7	73.6	158	0.05	1.0	0.0
154	148	159	0.033	1.0	0.0	53.4	-65.3	31.4	72.4	154	0.093	1.0	0.0	56.0	-58.5	36.6	69.1	148	0.033	1.0	0.0	0.0	1.0	0.044	52.2	-68.0	24.9	72.5	159	0.033	1.0	0.0
156	149	161	0.016	1.0	0.0	52.6	-67.1	29.8	73.4	156	0.084	1.0	0.0	55.6	-59.6	35.9	69.7	149	0.017	1.0	0.0	0.0	1.0	0.069	52.3	-67.6	23.2	71.5	161	0.017	1.0	0.0
157	150	162	0.0	1.0	0.0	51.9	-68.8	28.1	74.3	157	0.074	1.0	0.0	55.2	-60.7	35.1	70.2	150	0.0	1.0	0.0	0.0	1.0	0.093	52.4	-67.0	21.5	70.5	162	0.0	1.0	0.0
158	151	163	0.0	1.0	0.016	52.0	-68.5	26.9	73.6	158	0.065	1.0	0.0	54.8	-61.8	34.3	70.7	151	0.0	1.0	0.017	0.0	1.0	0.112	52.5	-66.6	20.2	69.7	163	0.0	1.0	0.017
159	152	164	0.0	1.0	0.033	52.1	-68.3	25.7	72.9	159	0.055	1.0	0.0	54.4	-62.8	33.5	71.3	152	0.0	1.0	0.033	0.0	1.0	0.13	52.6	-66.2	18.9	68.9	164	0.0	1.0	0.033
160	153	164	0.0	1.0	0.05	52.2	-68.0	24.5	72.2	160	0.046	1.0	0.0	53.9	-63.9	32.6	71.8	153	0.0	1.0	0.05	0.0	1.0	0.146	52.7	-65.7	17.7	68.1	164	0.0	1.0	0.05
160	154	165	0.0	1.0	0.066	52.2	-67.6	23.3	71.6	160	0.036	1.0	0.0	53.5	-64.9	31.7	72.3	154	0.0	1.0	0.067	0.0	1.0	0.162	52.8	-65.2	16.4	67.3	165	0.0	1.0	0.067
161	155	166	0.0	1.0	0.083	52.3	-67.3	22.1	70.9	161	0.027	1.0	0.0	53.1	-65.9	30.8	72.9	155	0.0	1.0	0.083	0.0	1.0	0.178	52.9	-64.6	15.2	66.5	166	0.0	1.0	0.083
162	156	167	0.0	1.0	0.1	52.4	-66.9	21.0	70.2	162	0.017	1.0	0.0	52.7	-67.0	29.9	73.4	156	0.0	1.0	0.1	0.0	1.0	0.193	53.0	-64.1	14.0	65.7	167	0.0	1.0	0.1
163	157	168	0.0	1.0	0.116	52.5	-66.6	19.9	69.5	163	0.008	1.0	0.0	52.3	-68.0	28.9	73.9	157	0.0	1.0	0.117	0.0	1.0	0.209	53.1	-63.5	12.8	64.9	168	0.0	1.0	0.117
164	158	169	0.0	1.0	0.133	52.6	-66.1	18.6	68.7	164	0.0	1.0	0.004	52.0	-68.7	27.8	74.2	158	0.0	1.0	0.133	0.0	1.0	0.225	53.2	-62.9	11.6	64.1	169	0.0	1.0	0.133
165	159	170	0.0	1.0	0.15	52.7	-65.6	17.3	67.9	165	0.0	1.0	0.025	52.1	-68.3	26.3	73.3	159	0.0	1.0	0.15	0.0	1.0	0.241	53.2	-62.3	10.5	63.3	170	0.		

Couleur maximale dans le système colorimétrique : Offset standard print; separation cmy6*, D65 pour l'entrée et sortie; Six angles de teinte à 60 degrés couleurs standard *RYGCBM_s*; *h_{ab,ds}* = 30.0, 90.0, 150.0, 210.0, 270.0, 330.0;
Six angles de teinte des couleurs périphériques *RYGCBM_d*; *h_{ab,d}* = 32.8, 97.2, 157.8, 236.2, 296.4, 353.3; Six angles de teinte des couleurs élémentaires *RYGCBM_c*; *h_{ab,e}* = 25.5, 92.3, 162.2, 217.0, 271.7, 328.6

<i>h_{ab,d}</i>	<i>h_{ab,s}</i>	<i>h_{ab,e}</i>	<i>rgb[*]_{dd361M}</i>	<i>LAB[*]_{dsx361Mi}</i> (x=LabCh)	<i>rgb[*]_{ds361Mi}</i>	<i>LAB[*]_{dsx361Mi}</i> (x=LabCh)	<i>rgb[*]_{de361Mi}</i>	<i>LAB[*]_{dex361Mi}</i> (x=LabCh)	<i>rgb[*]_{dd361Mi}</i>	<i>LAB[*]_{ds361Mi}</i>	<i>rgb[*]_{de361Mi}</i>	<i>LAB[*]_{dex361Mi}</i> (x=LabCh)	<i>rgb[*]_{dd361Mi}</i>	<i>rgb[*]_{dd}</i>	<i>rgb[*]_{ds}</i>	<i>rgb[*]_{de}</i>
170	165	175	0.0	1.0	0.25	53.2	-61.9	9.8	62.7	170	0.0	1.0	0.25			
172	166	176	0.0	1.0	0.266	53.4	-61.4	8.2	61.9	172	0.0	1.0	0.267			
173	167	177	0.0	1.0	0.283	53.5	-60.8	6.7	61.2	173	0.0	1.0	0.283			
175	168	178	0.0	1.0	0.3	53.6	-60.2	5.2	60.4	175	0.0	1.0	0.3			
176	169	179	0.0	1.0	0.316	53.7	-59.5	3.7	59.6	176	0.0	1.0	0.317			
177	170	180	0.0	1.0	0.333	53.8	-58.8	2.3	58.9	177	0.0	1.0	0.333			
179	171	181	0.0	1.0	0.35	53.9	-58.1	0.9	58.1	179	0.0	1.0	0.35			
180	172	182	0.0	1.0	0.366	54.0	-57.3	-0.4	57.3	180	0.0	1.0	0.367			
181	173	183	0.0	1.0	0.383	54.1	-56.6	-1.8	56.6	181	0.0	1.0	0.383			
183	174	184	0.0	1.0	0.4	54.2	-55.9	-3.5	56.0	183	0.0	1.0	0.4			
185	175	185	0.0	1.0	0.416	54.3	-55.2	-5.0	55.5	185	0.0	1.0	0.417			
186	176	186	0.0	1.0	0.433	54.4	-54.5	-6.6	54.9	186	0.0	1.0	0.433			
188	177	186	0.0	1.0	0.45	54.5	-53.7	-8.0	54.3	188	0.0	1.0	0.45			
190	178	187	0.0	1.0	0.466	54.6	-52.8	-9.5	53.7	190	0.0	1.0	0.467			
191	179	188	0.0	1.0	0.483	54.7	-52.0	-10.9	53.1	191	0.0	1.0	0.483			
193	180	189	0.0	1.0	0.5	54.8	-51.0	-12.3	52.5	193	0.0	1.0	0.5			
195	181	190	0.0	1.0	0.516	54.9	-50.4	-13.7	52.2	195	0.0	1.0	0.517			
196	182	191	0.0	1.0	0.533	55.1	-49.6	-15.0	51.9	196	0.0	1.0	0.533			
198	183	192	0.0	1.0	0.55	55.2	-48.9	-16.3	51.6	198	0.0	1.0	0.55			
200	184	193	0.0	1.0	0.566	55.3	-48.1	-17.6	51.2	200	0.0	1.0	0.567			
201	185	194	0.0	1.0	0.583	55.5	-47.3	-18.9	50.9	201	0.0	1.0	0.583			
203	186	195	0.0	1.0	0.6	55.6	-46.4	-20.1	50.6	203	0.0	1.0	0.6			
205	187	195	0.0	1.0	0.616	55.7	-45.5	-21.3	50.3	205	0.0	1.0	0.617			
206	188	196	0.0	1.0	0.633	55.8	-44.7	-22.5	50.1	206	0.0	1.0	0.633			
208	189	197	0.0	1.0	0.65	56.0	-44.0	-23.8	50.1	208	0.0	1.0	0.65			
210	190	198	0.0	1.0	0.666	56.1	-43.2	-25.0	50.0	210	0.0	1.0	0.667			
211	191	199	0.0	1.0	0.683	56.2	-42.4	-26.3	49.9	211	0.0	1.0	0.683			
213	192	200	0.0	1.0	0.7	56.3	-41.6	-27.5	49.9	213	0.0	1.0	0.7			
215	193	201	0.0	1.0	0.716	56.5	-40.8	-28.6	49.8	215	0.0	1.0	0.717			
216	194	202	0.0	1.0	0.733	56.6	-39.9	-29.8	49.8	216	0.0	1.0	0.733			
218	195	203	0.0	1.0	0.75	56.7	-38.9	-30.9	49.7	218	0.0	1.0	0.75			
219	196	204	0.0	1.0	0.766	56.8	-38.4	-31.7	49.8	219	0.0	1.0	0.767			
220	197	205	0.0	1.0	0.783	56.9	-37.8	-32.6	49.9	220	0.0	1.0	0.783			
221	198	206	0.0	1.0	0.8	57.0	-37.2	-33.5	50.1	221	0.0	1.0	0.8			
223	199	206	0.0	1.0	0.816	57.1	-36.6	-34.3	50.2	223	0.0	1.0	0.817			
224	200	207	0.0	1.0	0.833	57.3	-36.0	-35.2	50.3	224	0.0	1.0	0.833			
225	201	208	0.0	1.0	0.85	57.4	-35.3	-36.0	50.4	225	0.0	1.0	0.85			
226	202	209	0.0	1.0	0.866	57.5	-34.6	-36.8	50.6	226	0.0	1.0	0.867			
227	203	210	0.0	1.0	0.883	57.6	-34.0	-37.7	50.8	227	0.0	1.0	0.883			
229	204	211	0.0	1.0	0.9	57.7	-33.4	-38.6	51.0	229	0.0	1.0	0.9			
230	205	212	0.0	1.0	0.916	57.8	-32.8	-39.4	51.3	230	0.0	1.0	0.917			
231	206	213	0.0	1.0	0.933	57.9	-32.1	-40.3	51.6	231	0.0	1.0	0.933			
232	207	214	0.0	1.0	0.95	58.0	-31.4	-41.2	51.8	232	0.0	1.0	0.95			
233	208	215	0.0	1.0	0.966	58.1	-30.7	-42.0	52.1	233	0.0	1.0	0.967			
235	209	216	0.0	1.0	0.983	58.2	-30.0	-42.9	52.3	235	0.0	1.0	0.983			
236	210	216	0.0	1.0	1.0	58.3	-29.2	-43.7	52.6	236	0.0	1.0	1.0			

voir fichiers similaires: <http://130.149.60.45/~farbmetrik/RF05/RF05.HTM>
informations techniques: <http://www.ps.bam.de> ou <http://130.149.60.45/~farbmetrik>

TUB enregistrement: 20130201 -RF05/RF05LOFP.PDF /.PS
application pour la mesure des sorties sur offset, séparation cmy6* (CMYK)
TUB matériel: code=rh44ra

Couleur maximale dans le système colorimétrique : Offset standard print; separation cmy6*, D65 pour l'entrée et sortie; Six angles de teinte à 60 degrés couleurs standard *RYGCBM_s*; *h_{ab,ds}* = 30.0, 90.0, 150.0, 210.0, 270.0, 330.0; Six angles de teinte des couleurs périphériques *RYGCBM_d*; *h_{ab,d}* = 32.8, 97.2, 157.8, 236.2, 296.4, 353.3; Six angles de teinte des couleurs élémentaires *RYGCBM_c*; *h_{ab,e}* = 25.5, 92.3, 162.2, 217.0, 271.7, 328.6

<i>h_{ab,d}</i>	<i>h_{ab,s}</i>	<i>h_{ab,e}</i>	<i>rgb[*]_{dd361M}</i>	<i>LAB[*]_{ddx361Mi (x=LabCh)}</i>	<i>rgb[*]_{ds361Mi}</i>	<i>LAB[*]_{dsx361Mi (x=LabCh)}</i>	<i>rgb[*]_{de361Mi}</i>	<i>LAB[*]_{dex361Mi (x=LabCh)}</i>	<i>rgb[*]_{dd361Mi}</i>	<i>LAB[*]_{dd361Mi}</i>	<i>rgb[*]_{ds361Mi}</i>	<i>LAB[*]_{ds361Mi}</i>	<i>rgb[*]_{de361Mi}</i>	<i>LAB[*]_{dex361Mi}</i>	<i>rgb[*]_{dd361Mi}</i>	<i>rgb[*]_{ds361Mi}</i>	<i>rgb[*]_{de361Mi}</i>																												
236	210	216	0.0	1.0	1.0	58.3	-29.2	-43.7	52.6	236	0.0	1.0	0.666	56.1	-43.2	-24.9	50.0	210	0.0	1.0	1.0	0.0	1.0	0.736	56.7	-39.7	-29.9	49.8	216	0.0	1.0	0.983	1.0	0.0	1.0	0.745	56.7	-39.2	-30.5	49.8	217	0.0	1.0	0.983	1.0
236	211	217	0.0	0.983	1.0	57.9	-28.7	-43.7	52.3	236	0.0	1.0	0.676	56.2	-42.8	-25.7	50.0	211	0.0	0.983	1.0	0.0	1.0	0.745	56.7	-39.2	-30.5	49.8	217	0.0	1.0	0.983	1.0												
237	212	218	0.0	0.966	1.0	57.5	-28.1	-43.8	52.0	237	0.0	1.0	0.686	56.3	-42.3	-26.4	50.0	212	0.0	0.967	1.0	0.0	1.0	0.755	56.8	-38.7	-31.1	49.8	218	0.0	1.0	0.967	1.0												
237	213	219	0.0	0.95	1.0	57.1	-27.5	-43.8	51.8	237	0.0	1.0	0.696	56.4	-41.8	-27.1	49.9	213	0.0	0.95	1.0	0.0	1.0	0.768	56.9	-38.3	-31.8	49.9	219	0.0	1.0	0.95	1.0												
238	214	220	0.0	0.933	1.0	56.7	-26.9	-43.9	51.5	238	0.0	1.0	0.706	56.4	-41.3	-27.8	49.9	214	0.0	0.933	1.0	0.0	1.0	0.781	57.0	-37.8	-32.4	50.0	220	0.0	1.0	0.933	1.0												
238	215	221	0.0	0.916	1.0	56.2	-26.4	-43.9	51.2	238	0.0	1.0	0.716	56.5	-40.8	-28.5	49.9	215	0.0	0.917	1.0	0.0	1.0	0.794	57.0	-37.4	-33.1	50.1	221	0.0	1.0	0.917	1.0												
239	216	222	0.0	0.9	1.0	55.8	-25.8	-43.9	50.9	239	0.0	1.0	0.726	56.6	-40.2	-29.2	49.8	216	0.0	0.9	1.0	0.0	1.0	0.807	57.1	-36.9	-33.8	50.2	222	0.0	1.0	0.9	1.0												
240	217	223	0.0	0.883	1.0	55.4	-25.2	-43.9	50.7	240	0.0	1.0	0.736	56.7	-39.7	-29.9	49.8	217	0.0	0.883	1.0	0.0	1.0	0.819	57.2	-36.4	-34.4	50.3	223	0.0	1.0	0.883	1.0												
240	218	224	0.0	0.866	1.0	55.0	-24.6	-43.9	50.4	240	0.0	1.0	0.746	56.7	-39.1	-30.5	49.8	218	0.0	0.867	1.0	0.0	1.0	0.832	57.3	-36.0	-35.1	50.4	224	0.0	1.0	0.867	1.0												
241	219	225	0.0	0.85	1.0	54.5	-23.9	-44.0	50.1	241	0.0	1.0	0.758	56.8	-38.6	-31.2	49.8	219	0.0	0.85	1.0	0.0	1.0	0.845	57.4	-35.5	-35.7	50.5	225	0.0	1.0	0.85	1.0												
242	220	226	0.0	0.833	1.0	54.1	-23.2	-44.0	49.8	242	0.0	1.0	0.772	56.9	-38.1	-32.0	49.9	220	0.0	0.833	1.0	0.0	1.0	0.858	57.5	-35.0	-36.3	50.6	226	0.0	1.0	0.833	1.0												
242	221	227	0.0	0.816	1.0	53.6	-22.5	-44.1	49.5	242	0.0	1.0	0.786	57.0	-37.7	-32.7	50.0	221	0.0	0.817	1.0	0.0	1.0	0.871	57.5	-34.4	-37.0	50.7	227	0.0	1.0	0.817	1.0												
243	222	227	0.0	0.8	1.0	53.1	-21.8	-44.1	49.2	243	0.0	1.0	0.8	57.1	-37.2	-33.4	50.1	222	0.0	0.8	1.0	0.0	1.0	0.884	57.6	-33.9	-37.6	50.8	227	0.0	1.0	0.8	1.0												
244	223	228	0.0	0.783	1.0	52.7	-21.1	-44.1	48.9	244	0.0	1.0	0.814	57.2	-36.6	-34.2	50.2	223	0.0	0.783	1.0	0.0	1.0	0.896	57.7	-33.5	-38.3	51.0	228	0.0	1.0	0.783	1.0												
245	224	229	0.0	0.766	1.0	52.2	-20.4	-44.1	48.6	245	0.0	1.0	0.828	57.3	-36.1	-34.9	50.3	224	0.0	0.767	1.0	0.0	1.0	0.909	57.8	-33.0	-39.0	51.2	229	0.0	1.0	0.767	1.0												
245	225	230	0.0	0.75	1.0	51.7	-19.7	-44.1	48.3	245	0.0	1.0	0.842	57.4	-35.6	-35.6	50.4	225	0.0	0.75	1.0	0.0	1.0	0.922	57.9	-32.5	-39.7	51.4	230	0.0	1.0	0.75	1.0												
246	226	231	0.0	0.733	1.0	51.2	-18.9	-44.2	48.1	246	0.0	1.0	0.856	57.5	-35.0	-36.3	50.5	226	0.0	0.733	1.0	0.0	1.0	0.935	57.9	-32.0	-40.4	51.6	231	0.0	1.0	0.733	1.0												
247	227	232	0.0	0.716	1.0	50.7	-18.1	-44.3	47.8	247	0.0	1.0	0.87	57.5	-34.4	-36.9	50.7	227	0.0	0.717	1.0	0.0	1.0	0.948	58.0	-31.5	-41.0	51.8	232	0.0	1.0	0.717	1.0												
248	228	233	0.0	0.7	1.0	50.1	-17.4	-44.3	47.6	248	0.0	1.0	0.884	57.6	-33.9	-37.7	50.8	228	0.0	0.7	1.0	0.0	1.0	0.961	58.1	-30.9	-41.7	52.0	233	0.0	1.0	0.7	1.0												
249	229	234	0.0	0.683	1.0	49.6	-16.6	-44.3	47.4	249	0.0	1.0	0.899	57.7	-33.4	-38.4	51.1	229	0.0	0.683	1.0	0.0	1.0	0.974	58.2	-30.4	-42.3	52.2	234	0.0	1.0	0.683	1.0												
250	230	235	0.0	0.666	1.0	49.1	-15.8	-44.4	47.1	250	0.0	1.0	0.913	57.8	-32.9	-39.2	51.3	230	0.0	0.667	1.0	0.0	1.0	0.987	58.3	-29.8	-43.0	52.4	235	0.0	1.0	0.667	1.0												
251	231	236	0.0	0.65	1.0	48.5	-15.0	-44.4	46.9	251	0.0	1.0	0.927	57.9	-32.3	-39.9	51.5	231	0.0	0.65	1.0	0.0	1.0	0.999	58.3	-29.2	-43.6	52.6	236	0.0	1.0	0.65	1.0												
252	232	237	0.0	0.633	1.0	48.0	-14.3	-44.4	46.6	252	0.0	1.0	0.941	58.0	-31.7	-40.7	51.7	232	0.0	0.633	1.0	0.0	1.0	0.974	1.0	57.7	-28.3	-43.7	52.2	237	0.0	1.0	0.633	1.0											
253	233	237	0.0	0.616	1.0	47.4	-13.4	-44.5	46.4	253	0.0	1.0	0.955	58.1	-31.2	-41.4	51.9	233	0.0	0.617	1.0	0.0	1.0	0.947	1.0	57.0	-27.4	-43.8	51.8	237	0.0	1.0	0.617	1.0											
254	234	238	0.0	0.6	1.0	46.7	-12.3	-44.6	46.3	254	0.0	1.0	0.969	58.2	-30.6	-42.1	52.2	234	0.0	0.6	1.0	0.0	1.0	0.919	1.0	56.4	-26.4	-43.8	51.3	238	0.0	1.0	0.6	1.0											
255	235	239	0.0	0.583	1.0	46.1	-11.3	-44.7	46.1	255	0.0	1.0	0.983	58.2	-29.9	-42.8	52.4	235	0.0	0.583	1.0	0.0	1.0	0.892	1.0	55.7	-25.5	-43.8	50.8	239	0.0	1.0	0.583	1.0											
257	236	240	0.0	0.566	1.0	45.4	-10.2	-44.8	46.0	257	0.0	1.0	0.997	58.3	-29.3	-43.5	52.6	236	0.0	0.567	1.0	0.0	1.0	0.867	1.0	55.0	-24.6	-43.9	50.4	240	0.0	1.0	0.567	1.0											
258	237	241	0.0	0.55	1.0	44.7	-9.1	-44.9	45.8	258	0.0	1.0	0.976	1.0	57.7	-28.4	-43.7	52.2	237	0.0	0.55	1.0	0.0	1.0	0.847	1.0	54.5	-23.7	-44.0	50.1	241	0.0	1.0	0.55	1.0										
259	238	242	0.0	0.533	1.0	44.1	-8.1	-45.0	45.7	259	0.0	1.0	0.946	1.0	57.0	-27.3	-43.8	51.7	238	0.0	0.533	1.0	0.0	1.0	0.826	1.0	53.9	-22.8	-44.0	49.7	242	0.0	1.0	0.533	1.0										
261	239	243	0.0	0.516	1.0	43.4	-7.0	-45.0	45.5	261	0.0	1.0	0.916	1.0	56.3	-26.3	-43.8	51.2	239	0.0	0.517	1.0	0.0	1.0	0.805	1.0	53.3	-22.0	-44.0	49.3	243	0.0	1.0	0.517	1.0										
262	240	244	0.0	0.5	1.0	42.7	-6.0	-45.0	45.4	262	0.0	1.0	0.886	1.0	55.5	-25.3	-43.8	50.7	240	0.0	0.5	1.0	0.0	1.0	0.785	1.0	52.7	-21.1	-44.1	49.0	244	0.0	1.0	0.5	1.0										
263	241	245	0.0	0.483	1.0	42.1	-5.0	-45.1	45.4	263	0.0	1.0	0.861	1.0	54.9	-24.3	-43.9	50.3	241	0.0	0.483	1.0	0.0	1.0	0.764	1.0	52.2	-20.2	-44.1	48.6	245	0.0	1.0	0.483	1.0										
264	242	246	0.0	0.466	1.0	41.4	-4.0	-45.2	45.4	264	0.0	1.0	0.838	1.0	54.2	-23.3	-44.0	49.9	242	0.0	0.467	1.0	0.0	1.0	0.745	1.0	51.6	-19.4	-44.1	48.3	246	0.0	1.0	0.467	1.0										
266	243	247	0.0	0.45	1.0	40.8	-3.0	-45.3	45.4	266	0.0	1.0	0.815	1.0	53.6	-22.4	-44.0	49.5	243	0.0	0.45	1.0	0.0	1.0	0.727	1.0	51.1	-18.6	-44.2	48.1	247	0.0	1.0	0.45	1.0										
267	244	248	0.0	0.433	1.0	40.2	-2.1	-45.3	45.4	267	0.0	1.0	0.793	1.0	53.0	-21.4	-44.1	49.1	244	0.0	0.433	1.0	0.0	1.0	0.71	1.0	50.5	-17.8	-44.2	47.8	248	0.0	1.0	0.433	1.0										
268	245	248	0.0	0.416	1.0	39.5	-1.1	-45.4	45.4	268	0.0	1.0	0.777	1.0	52.3	-20.5	-44.1	48.7	245	0.0	0.417	1.0	0.0	1.0	0.693	1.0	50.0	-17.0	-44.3	47.6	248	0.0	1.0	0.417	1.0										
269	246	249	0.0	0.4	1.0	38.9	-0.1	-45.4	45.4	269	0.0	1.0	0.748	1.0	51.7	-19.6	-44.1	48.4	246	0.0	0.4	1.0	0.0	1.0	0.676	1.0	49.4	-16.2	-44.3	47.3	249	0.0	1.0	0.4	1.0										
271	247	250	0.0	0.383	1.0	38.2	0.8	-45.4	45.4	271	0.0	1.0	0.729	1.0	51.1																														

Couleur maximale dans le système colorimétrique : Offset standard print; separation cmyn6*, D65 pour l'entrée et sortie; Six angles de teinte à 60 degrés couleurs standard *RYGCBM_s*; *h_{ab,ds}* = 30.0, 90.0, 150.0, 210.0, 270.0, 330.0;
Six angles de teinte des couleurs périphériques *RYGCBM_d*; *h_{ab,d}* = 32.8, 97.2, 157.8, 236.2, 296.4, 353.3; Six angles de teinte des couleurs élémentaires *RYGCBM_c*; *h_{ab,e}* = 25.5, 92.3, 162.2, 217.0, 271.7, 328.6

<i>h_{ab,d}</i>	<i>h_{ab,s}</i>	<i>h_{ab,e}</i>	<i>rgb[*]_{dd361M}</i>	<i>LAB[*]_{dsx361Mi}</i> (x=LabCh)	<i>rgb[*]_{ds361Mi}</i>	<i>LAB[*]_{dsx361Mi}</i> (x=LabCh)	<i>rgb[*]_{de361Mi}</i>	<i>LAB[*]_{dex361Mi}</i> (x=LabCh)	<i>rgb[*]_{de361Mi}</i>	<i>LAB[*]_{dex361Mi}</i> (x=LabCh)	<i>rgb[*]_{dd361Mi}</i>	<i>rgb[*]_{ds}</i>	<i>rgb[*]_{ds}</i>	<i>rgb[*]_{de}</i>																			
281	255	258	0.0	0.25	1.0	33.3	9.4	-46.0	47.0	281	0.0	0.594	1.0	46.5	-11.9	-44.6	46.3	255	0.0	0.25	1.0	0.0	0.555	1.0	45.0	-9.4	-44.8	45.9	258	0.0	0.25	1.0	
282	256	258	0.0	0.233	1.0	32.7	10.5	-46.2	47.4	282	0.0	0.581	1.0	46.0	-11.1	-44.7	46.2	256	0.0	0.233	1.0	0.0	0.543	1.0	44.5	-8.7	-44.9	45.8	258	0.0	0.233	1.0	
283	257	259	0.0	0.216	1.0	32.0	11.5	-46.4	47.8	283	0.0	0.568	1.0	45.5	-10.3	-44.8	46.1	257	0.0	0.217	1.0	0.0	0.532	1.0	44.1	-7.9	-44.9	45.7	259	0.0	0.217	1.0	
285	258	260	0.0	0.2	1.0	31.4	12.5	-46.5	48.2	285	0.0	0.556	1.0	45.0	-9.5	-44.8	45.9	258	0.0	0.2	1.0	0.0	0.52	1.0	43.6	-7.2	-44.9	45.6	260	0.0	0.2	1.0	
286	259	261	0.0	0.183	1.0	30.8	13.6	-46.7	48.6	286	0.0	0.543	1.0	44.5	-8.6	-44.9	45.8	259	0.0	0.183	1.0	0.0	0.508	1.0	43.1	-6.5	-44.9	45.5	261	0.0	0.183	1.0	
287	260	262	0.0	0.166	1.0	30.1	14.7	-46.8	49.0	287	0.0	0.53	1.0	44.0	-7.8	-44.9	45.7	260	0.0	0.167	1.0	0.0	0.497	1.0	42.7	-5.7	-45.0	45.4	262	0.0	0.167	1.0	
288	261	263	0.0	0.15	1.0	29.5	15.8	-46.9	49.4	288	0.0	0.517	1.0	43.5	-7.0	-44.9	45.6	261	0.0	0.15	1.0	0.0	0.484	1.0	42.2	-5.0	-45.0	45.4	263	0.0	0.15	1.0	
289	262	264	0.0	0.133	1.0	28.9	16.8	-46.9	49.9	289	0.0	0.505	1.0	43.0	-6.2	-44.9	45.5	262	0.0	0.133	1.0	0.0	0.472	1.0	41.7	-4.3	-45.1	45.4	264	0.0	0.133	1.0	
290	263	265	0.0	0.116	1.0	28.3	17.8	-47.0	50.3	290	0.0	0.491	1.0	42.5	-5.4	-45.0	45.4	263	0.0	0.117	1.0	0.0	0.46	1.0	41.2	-3.6	-45.2	45.4	265	0.0	0.117	1.0	
291	264	266	0.0	0.1	1.0	27.9	18.6	-47.1	50.6	291	0.0	0.478	1.0	41.9	-4.6	-45.1	45.4	264	0.0	0.1	1.0	0.0	0.448	1.0	40.8	-2.9	-45.2	45.4	266	0.0	0.1	1.0	
292	265	267	0.0	0.083	1.0	27.5	19.4	-47.1	51.0	292	0.0	0.465	1.0	41.4	-3.9	-45.2	45.4	265	0.0	0.083	1.0	0.0	0.436	1.0	40.3	-2.1	-45.3	45.4	267	0.0	0.083	1.0	
293	266	268	0.0	0.066	1.0	27.0	20.2	-47.2	51.4	293	0.0	0.451	1.0	40.9	-3.1	-45.2	45.4	266	0.0	0.067	1.0	0.0	0.423	1.0	39.8	-1.4	-45.3	45.4	268	0.0	0.067	1.0	
293	267	269	0.0	0.049	1.0	26.6	21.0	-47.3	51.7	293	0.0	0.438	1.0	40.4	-2.3	-45.3	45.4	267	0.0	0.05	1.0	0.0	0.411	1.0	39.4	-0.7	-45.3	45.4	269	0.0	0.05	1.0	
294	268	269	0.0	0.033	1.0	26.2	21.8	-47.3	52.1	294	0.0	0.425	1.0	39.9	-1.5	-45.3	45.4	268	0.0	0.033	1.0	0.0	0.399	1.0	38.9	0.0	-45.3	45.4	269	0.0	0.033	1.0	
295	269	270	0.0	0.016	1.0	25.7	22.6	-47.3	52.5	295	0.0	0.411	1.0	39.4	-0.7	-45.3	45.4	269	0.0	0.017	1.0	0.0	0.387	1.0	38.4	0.7	-45.3	45.4	270	0.0	0.017	1.0	
296	270	271	0.0	0.0	1.0	25.3	23.5	-47.3	52.8	296	B_d	0.0	0.398	1.0	38.8	0.0	-45.3	45.4	270B_s	0.0	0.0	1.0	0.0	0.375	1.0	37.9	1.4	-45.3	45.5	271B_e	0.0	0.0	1.0
297	271	272	0.016	0.0	1.0	25.8	24.6	-46.8	52.9	297	0.0	0.385	1.0	38.3	0.8	-45.3	45.4	271	0.017	0.0	1.0	0.0	0.363	1.0	37.5	2.1	-45.5	45.6	272	0.017	0.0	1.0	
299	272	273	0.033	0.0	1.0	26.3	25.8	-46.2	52.9	299	0.0	0.371	1.0	37.8	1.6	-45.4	45.5	272	0.033	0.0	1.0	0.0	0.351	1.0	37.1	2.9	-45.6	45.8	273	0.033	0.0	1.0	
300	273	274	0.05	0.0	1.0	26.9	26.9	-45.6	52.9	300	0.0	0.359	1.0	37.3	2.4	-45.5	45.7	273	0.05	0.0	1.0	0.0	0.339	1.0	36.6	3.7	-45.7	45.9	274	0.05	0.0	1.0	
301	274	275	0.066	0.0	1.0	27.4	28.0	-45.0	53.0	301	0.0	0.346	1.0	36.9	3.2	-45.6	45.8	274	0.067	0.0	1.0	0.0	0.327	1.0	36.2	4.4	-45.7	46.0	275	0.067	0.0	1.0	
303	275	276	0.083	0.0	1.0	27.9	29.1	-44.3	53.0	303	0.0	0.334	1.0	36.4	4.0	-45.7	46.0	275	0.083	0.0	1.0	0.0	0.315	1.0	35.7	5.2	-45.8	46.2	276	0.083	0.0	1.0	
304	276	277	0.1	0.0	1.0	28.5	30.2	-43.6	53.1	304	0.0	0.321	1.0	36.0	4.8	-45.8	46.1	276	0.1	0.0	1.0	0.0	0.303	1.0	35.3	6.0	-45.9	46.3	277	0.1	0.0	1.0	
306	277	278	0.116	0.0	1.0	29.0	31.2	-42.9	53.1	306	0.0	0.309	1.0	35.5	5.6	-45.8	46.3	277	0.117	0.0	1.0	0.0	0.291	1.0	34.9	6.8	-45.9	46.5	278	0.117	0.0	1.0	
307	278	279	0.133	0.0	1.0	29.4	32.1	-42.3	53.1	307	0.0	0.296	1.0	35.0	6.5	-45.9	46.4	278	0.133	0.0	1.0	0.0	0.279	1.0	34.4	7.6	-45.9	46.6	279	0.133	0.0	1.0	
307	279	280	0.15	0.0	1.0	29.7	32.7	-41.9	53.2	307	0.0	0.283	1.0	34.6	7.3	-45.9	46.6	279	0.15	0.0	1.0	0.0	0.267	1.0	34.0	8.3	-45.9	46.8	280	0.15	0.0	1.0	
308	280	281	0.166	0.0	1.0	30.0	33.3	-41.5	53.2	308	0.0	0.271	1.0	34.1	8.1	-45.9	46.7	280	0.167	0.0	1.0	0.0	0.256	1.0	33.5	9.1	-45.9	46.9	281	0.167	0.0	1.0	
309	281	282	0.183	0.0	1.0	30.3	33.9	-41.0	53.2	309	0.0	0.258	1.0	33.6	8.9	-45.9	46.9	281	0.183	0.0	1.0	0.0	0.243	1.0	33.1	9.9	-46.0	47.2	282	0.183	0.0	1.0	
310	282	283	0.2	0.0	1.0	30.6	34.5	-40.6	53.3	310	0.0	0.245	1.0	33.1	9.8	-46.0	47.1	282	0.2	0.0	1.0	0.0	0.229	1.0	32.5	10.8	-46.2	47.5	283	0.2	0.0	1.0	
311	283	284	0.216	0.0	1.0	30.9	35.0	-40.1	53.3	311	0.0	0.231	1.0	32.6	10.7	-46.2	47.5	283	0.217	0.0	1.0	0.0	0.215	1.0	32.0	11.6	-46.3	47.9	284	0.217	0.0	1.0	
311	284	285	0.233	0.0	1.0	31.2	35.6	-39.6	53.3	311	0.0	0.216	1.0	32.1	11.6	-46.3	47.8	284	0.233	0.0	1.0	0.0	0.202	1.0	31.5	12.5	-46.5	48.2	285	0.233	0.0	1.0	
312	285	285	0.25	0.0	1.0	31.5	36.2	-39.2	53.4	312	0.0	0.202	1.0	31.5	12.5	-46.5	48.2	285	0.25	0.0	1.0	0.0	0.188	1.0	31.0	13.3	-46.6	48.5	285	0.25	0.0	1.0	
314	286	286	0.266	0.0	1.0	31.8	37.8	-38.3	53.8	314	0.0	0.188	1.0	31.0	13.4	-46.6	48.6	286	0.267	0.0	1.0	0.0	0.175	1.0	30.5	14.2	-46.7	48.9	286	0.267	0.0	1.0	
316	287	287	0.283	0.0	1.0	32.1	39.4	-37.4	54.3	316	0.0	0.173	1.0	30.4	14.3	-46.7	48.9	287	0.283	0.0	1.0	0.0	0.161	1.0	30.0	15.1	-46.8	49.2	287	0.283	0.0	1.0	
318	288	288	0.3	0.0	1.0	32.4	40.9	-36.4	54.8	318	0.0	0.159	1.0	29.9	15.2	-46.8	49.3	288	0.3	0.0	1.0	0.0	0.147	1.0	29.5	16.0	-46.8	49.6	288	0.3	0.0	1.0	
320	289	289	0.316	0.0	1.0	32.7	42.4	-35.3	55.3	320	0.0	0.145	1.0	29.4	16.2	-46.8	49.6	289	0.317	0.0	1.0	0.0	0.134	1.0	28.9	16.9	-46.9	49.9	289	0.317	0.0	1.0	
322	290	290	0.333	0.0	1.0	33.0	43.9	-34.2	55.7	322	0.0	0.13	1.0	28.8	17.1	-46.9	50.0	290	0.333	0.0	1.0	0.0	0.118	1.0	28.4	17.8	-46.9	50.3	290	0.333	0.0	1.0	
323	291	291	0.35	0.0	1.0	33.3	45.4	-33.1	56.2	323	0.0	0.112	1.0	28.3	18.1	-47.0	50.4	291	0.35	0.0	1.0	0.0	0.098	1.0	27.9	18.7	-47.0	50.7	291	0.35	0.0	1.0	
325	292	292	0.366	0.0	1.0	33.6	46.9	-31.8	56.7	325	0.0	0.091	1.0	27.7	19.1	-47.1	50.9	292	0.367	0.0	1.0	0.0	0.079	1.0	27.4	19.6	-47.1	51.1	292	0.367	0.0	1.0	
327	293	293	0.383	0.0	1.0	34.0	48.0	-30.9	57.1	327	0.0	0.07	1.0	27.2	20.1	-47.1	51.3	293	0.383	0.0	1.0	0.0	0.059	1.0	26.9	20.6	-47.2	51.6	293	0.383	0.0	1.0	
328	294	294	0.4	0.0	1.0	34.6	48.9	-30.3	57.5	328	0.0	0.05	1.0	26.6	21.1	-47.2	51.8	294	0.4	0.0	1.0	0.0	0.04	1.0	26.4	21.6	-47.2						

Couleur maximale dans le système colorimétrique : Offset standard print; séparation cmyn6*, D65 pour l'entrée et sortie; Six angles de teinte à 60 degrés couleurs standard *RYGCBM_s*; *h_{ab,ds}* = 30.0, 90.0, 150.0, 210.0, 270.0, 330.0;
Six angles de teinte des couleurs périphériques *RYGCBM_d*; *h_{ab,d}* = 32.8, 97.2, 157.8, 236.2, 296.4, 353.3; Six angles de teinte des couleurs élémentaires *RYGCBM_e*; *h_{ab,e}* = 25.5, 92.3, 162.2, 217.0, 271.7, 328.6

<i>h_{ab,d}</i>	<i>h_{ab,s}</i>	<i>h_{ab,e}</i>	<i>rgb[*]</i>	<i>dd361M</i>	<i>LAB[*]</i>	<i>dsx361Mi</i> (x=LabCh)	<i>rgb[*]</i>	<i>ds361Mi</i>	<i>LAB[*]</i>	<i>dsx361Mi</i> (x=LabCh)	<i>rgb[*]</i>	<i>dd361Mi</i>	<i>LAB[*]</i>	<i>de361Mi</i>	<i>dex361Mi</i> (x=LabCh)	<i>rgb[*]</i>	<i>dd361Mi</i>															
333	300	300	0.5	0.0	1.0	37.8	53.8	-26.3	59.9	333	0.043	0.0	1.0	26.7	26.5	-45.8	53.0	300	0.5	0.0	1.0	0.046	0.0	1.0	26.8	26.6	-45.7	53.0	300	0.5	0.0	1.0
334	301	301	0.516	0.0	1.0	38.3	54.5	-25.7	60.3	334	0.056	0.0	1.0	27.1	27.3	-45.3	53.0	301	0.517	0.0	1.0	0.057	0.0	1.0	27.2	27.4	-45.3	53.0	301	0.517	0.0	1.0
335	302	302	0.533	0.0	1.0	38.7	55.2	-25.2	60.6	335	0.068	0.0	1.0	27.5	28.1	-44.9	53.0	302	0.533	0.0	1.0	0.068	0.0	1.0	27.5	28.2	-44.8	53.0	302	0.533	0.0	1.0
336	303	303	0.55	0.0	1.0	39.1	55.8	-24.6	61.0	336	0.08	0.0	1.0	27.9	28.9	-44.4	53.1	303	0.55	0.0	1.0	0.08	0.0	1.0	27.9	28.9	-44.4	53.1	303	0.55	0.0	1.0
336	304	303	0.566	0.0	1.0	39.5	56.5	-24.0	61.4	336	0.092	0.0	1.0	28.3	29.7	-43.9	53.1	304	0.567	0.0	1.0	0.091	0.0	1.0	28.3	29.7	-43.9	53.1	303	0.567	0.0	1.0
337	305	304	0.583	0.0	1.0	39.9	57.2	-23.4	61.8	337	0.104	0.0	1.0	28.7	30.5	-43.4	53.1	305	0.583	0.0	1.0	0.103	0.0	1.0	28.6	30.4	-43.5	53.1	304	0.583	0.0	1.0
338	306	305	0.6	0.0	1.0	40.3	57.8	-22.8	62.2	338	0.116	0.0	1.0	29.0	31.2	-42.9	53.1	306	0.6	0.0	1.0	0.114	0.0	1.0	29.0	31.1	-43.0	53.1	305	0.6	0.0	1.0
339	307	306	0.616	0.0	1.0	40.7	58.5	-22.1	62.5	339	0.13	0.0	1.0	29.4	32.0	-42.4	53.2	307	0.617	0.0	1.0	0.126	0.0	1.0	29.4	31.9	-42.5	53.2	306	0.617	0.0	1.0
340	308	307	0.633	0.0	1.0	41.1	59.3	-21.4	63.0	340	0.151	0.0	1.0	29.8	32.8	-41.8	53.2	308	0.633	0.0	1.0	0.146	0.0	1.0	29.7	32.6	-42.0	53.2	307	0.633	0.0	1.0
341	309	308	0.65	0.0	1.0	41.4	60.3	-20.5	63.7	341	0.172	0.0	1.0	30.2	33.5	-41.3	53.3	309	0.65	0.0	1.0	0.166	0.0	1.0	30.1	33.3	-41.5	53.2	308	0.65	0.0	1.0
342	310	309	0.666	0.0	1.0	41.7	61.3	-19.7	64.3	342	0.193	0.0	1.0	30.6	34.3	-40.7	53.3	310	0.667	0.0	1.0	0.186	0.0	1.0	30.4	34.0	-40.9	53.3	309	0.667	0.0	1.0
343	311	310	0.683	0.0	1.0	41.9	62.2	-18.8	65.0	343	0.214	0.0	1.0	30.9	35.0	-40.2	53.3	311	0.683	0.0	1.0	0.205	0.0	1.0	30.8	34.7	-40.4	53.3	310	0.683	0.0	1.0
344	312	311	0.7	0.0	1.0	42.2	63.2	-17.8	65.6	344	0.234	0.0	1.0	31.3	35.7	-39.6	53.4	312	0.7	0.0	1.0	0.225	0.0	1.0	31.1	35.4	-39.8	53.4	311	0.7	0.0	1.0
345	313	312	0.716	0.0	1.0	42.5	64.1	-16.9	66.3	345	0.252	0.0	1.0	31.6	36.5	-39.0	53.5	313	0.717	0.0	1.0	0.245	0.0	1.0	31.5	36.1	-39.3	53.4	312	0.717	0.0	1.0
346	314	313	0.733	0.0	1.0	42.8	65.0	-15.9	66.9	346	0.261	0.0	1.0	31.8	37.3	-38.5	53.7	314	0.733	0.0	1.0	0.256	0.0	1.0	31.7	36.8	-38.8	53.6	313	0.733	0.0	1.0
347	315	314	0.75	0.0	1.0	43.1	65.9	-14.9	67.6	347	0.27	0.0	1.0	31.9	38.2	-38.1	54.0	315	0.75	0.0	1.0	0.265	0.0	1.0	31.8	37.7	-38.4	53.8	314	0.75	0.0	1.0
347	316	315	0.766	0.0	1.0	43.5	66.4	-14.5	68.0	347	0.279	0.0	1.0	32.1	39.0	-37.6	54.2	316	0.767	0.0	1.0	0.273	0.0	1.0	32.0	38.5	-37.9	54.1	315	0.767	0.0	1.0
348	317	316	0.783	0.0	1.0	43.8	66.9	-14.1	68.4	348	0.288	0.0	1.0	32.3	39.8	-37.1	54.5	317	0.783	0.0	1.0	0.282	0.0	1.0	32.1	39.3	-37.4	54.3	316	0.783	0.0	1.0
348	318	317	0.8	0.0	1.0	44.2	67.3	-13.7	68.7	348	0.297	0.0	1.0	32.4	40.7	-36.5	54.7	318	0.8	0.0	1.0	0.29	0.0	1.0	32.3	40.0	-36.9	54.5	317	0.8	0.0	1.0
348	319	318	0.816	0.0	1.0	44.6	67.8	-13.3	69.1	348	0.306	0.0	1.0	32.6	41.5	-36.0	55.0	319	0.817	0.0	1.0	0.299	0.0	1.0	32.4	40.8	-36.4	54.8	318	0.817	0.0	1.0
349	320	319	0.833	0.0	1.0	45.0	68.3	-12.9	69.5	349	0.315	0.0	1.0	32.7	42.3	-35.4	55.2	320	0.833	0.0	1.0	0.307	0.0	1.0	32.6	41.6	-35.9	55.0	319	0.833	0.0	1.0
349	321	320	0.85	0.0	1.0	45.3	68.8	-12.5	69.9	349	0.324	0.0	1.0	32.9	43.1	-34.8	55.5	321	0.85	0.0	1.0	0.315	0.0	1.0	32.7	42.4	-35.4	55.3	320	0.85	0.0	1.0
350	322	321	0.866	0.0	1.0	45.7	69.2	-12.1	70.3	350	0.333	0.0	1.0	33.1	43.9	-34.2	55.8	322	0.867	0.0	1.0	0.324	0.0	1.0	32.9	43.2	-34.8	55.5	321	0.867	0.0	1.0
350	323	321	0.883	0.0	1.0	46.1	69.7	-11.7	70.7	350	0.342	0.0	1.0	33.2	44.7	-33.6	56.0	323	0.883	0.0	1.0	0.332	0.0	1.0	33.0	43.9	-34.2	55.7	321	0.883	0.0	1.0
350	324	322	0.9	0.0	1.0	46.4	70.1	-11.2	71.0	350	0.351	0.0	1.0	33.4	45.5	-33.0	56.3	324	0.9	0.0	1.0	0.341	0.0	1.0	33.2	44.7	-33.7	56.0	322	0.9	0.0	1.0
351	325	323	0.916	0.0	1.0	46.7	70.6	-10.8	71.4	351	0.359	0.0	1.0	33.5	46.3	-32.3	56.5	325	0.917	0.0	1.0	0.349	0.0	1.0	33.4	45.4	-33.1	56.2	323	0.917	0.0	1.0
351	326	324	0.933	0.0	1.0	47.0	71.0	-10.3	71.8	351	0.368	0.0	1.0	33.7	47.1	-31.6	56.8	326	0.933	0.0	1.0	0.358	0.0	1.0	33.5	46.2	-32.4	56.5	324	0.933	0.0	1.0
352	327	325	0.95	0.0	1.0	47.3	71.5	-9.9	72.2	352	0.379	0.0	1.0	34.0	47.9	-31.0	57.1	327	0.95	0.0	1.0	0.366	0.0	1.0	33.7	46.9	-31.8	56.7	325	0.95	0.0	1.0
352	328	326	0.966	0.0	1.0	47.6	71.9	-9.4	72.5	352	0.397	0.0	1.0	34.5	48.7	-30.4	57.5	328	0.967	0.0	1.0	0.375	0.0	1.0	33.8	47.6	-31.2	57.0	326	0.967	0.0	1.0
352	329	327	0.983	0.0	1.0	47.9	72.4	-9.0	72.9	352	0.414	0.0	1.0	35.1	49.6	-29.7	57.9	329	0.983	0.0	1.0	0.391	0.0	1.0	34.3	48.4	-30.6	57.3	327	0.983	0.0	1.0
353	330	328	1.0	0.0	1.0	48.2	72.8	-8.5	73.3	353	0.432	0.0	1.0	35.7	50.5	-29.1	58.3	330	1.0	0.0	1.0	0.407	0.0	1.0	34.9	49.3	-30.0	57.7	328	1.0	0.0	1.0
353	331	329	1.0	0.0	0.983	48.2	72.7	-7.9	73.1	353	0.449	0.0	1.0	36.2	51.4	-28.4	58.7	331	1.0	0.0	0.983	0.424	0.0	1.0	35.4	50.1	-29.4	58.1	329	1.0	0.0	0.983
354	332	330	1.0	0.0	0.966	48.2	72.5	-7.4	72.9	354	0.467	0.0	1.0	36.8	52.2	-27.7	59.1	332	1.0	0.0	0.967	0.441	0.0	1.0	35.9	50.9	-28.7	58.5	330	1.0	0.0	0.967
354	333	331	1.0	0.0	0.95	48.2	72.4	-6.8	72.7	354	0.484	0.0	1.0	37.4	53.1	-26.9	59.6	333	1.0	0.0	0.95	0.457	0.0	1.0	36.5	51.8	-28.1	58.9	331	1.0	0.0	0.95
355	334	332	1.0	0.0	0.933	48.2	72.2	-6.2	72.5	355	0.502	0.0	1.0	37.9	53.9	-26.2	60.0	334	1.0	0.0	0.933	0.474	0.0	1.0	37.0	52.6	-27.4	59.3	332	1.0	0.0	0.933
355	335	333	1.0	0.0	0.916	48.2	72.0	-5.7	72.3	355	0.524	0.0	1.0	38.5	54.8	-25.5	60.5	335	1.0	0.0	0.917	0.49	0.0	1.0	37.6	53.4	-26.7	59.7	333	1.0	0.0	0.917
355	336	334	1.0	0.0	0.9	48.2	71.9	-5.1	72.1	355	0.546	0.0	1.0	39.0	55.7	-24.7	61.0	336	1.0	0.0	0.9	0.508	0.0	1.0	38.1	54.2	-26.0	60.1	334	1.0	0.0	0.9
356	337	335	1.0	0.0	0.883	48.2	71.7	-4.6	71.8	356	0.567	0.0	1.0	39.6	56.6	-23.9	61.5	337	1.0	0.0	0.883	0.529	0.0	1.0	38.6	55.0	-25.3	60.6	335	1.0	0.0	0.883
356	338	336	1.0	0.0	0.866	48.2	71.5	-4.0	71.7	356	0.589	0.0	1.0	40.1	57.5	-23.1	62.0	338	1.0	0.0	0.867	0.55	0.0	1.0	39.1	55.9	-24.6	61.1	336	1.0	0.0	0.867
357	339	337	1.0	0.0	0.85	48.2	71.4	-3.3	71.5	357	0.611	0.0	1.0	40.7	58.3	-22.3	62.5	339	1.0	0.0	0.85	0.57	0.0	1.0	39.6	56.7	-23.8	61.5	337	1.0	0.0	0.85
357	340																															

Couleur maximale dans le système colorimétrique : Offset standard print; separation cmy6*, D65 pour l'entrée et sortie; Six angles de teinte à 60 degrés couleurs standard *RYGCBM_s*; *h_{ab,ds}* = 30.0, 90.0, 150.0, 210.0, 270.0, 330.0;
Six angles de teinte des couleurs périphériques *RYGCBM_d*; *h_{ab,d}* = 32.8, 97.2, 157.8, 236.2, 296.4, 353.3; Six angles de teinte des couleurs élémentaires *RYGCBM_c*; *h_{ab,c}* = 25.5, 92.3, 162.2, 217.0, 271.7, 328.6

voir fichiers similaires: <http://130.149.60.45/~farbmetrik/RF05/RF05.HTM>
informations techniques: <http://www.ps.bam.de> ou <http://130.149.60.45/~farbmetrik>

<i>h_{ab,d}</i>	<i>h_{ab,s}</i>	<i>h_{ab,c}</i>	<i>rgb[*]_{dd361M}</i>	<i>LAB[*]_{dsx361Mi}</i> (x=LabCh)	<i>rgb[*]_{ds361Mi}</i>	<i>LAB[*]_{dsx361Mi}</i> (x=LabCh)	<i>rgb[*]_{de361Mi}</i>	<i>LAB[*]_{dex361Mi}</i> (x=LabCh)	<i>rgb[*]_{dd361Mi}</i>	<i>rgb[*]_{de361Mi}</i>	<i>LAB[*]_{dex361Mi}</i> (x=LabCh)	<i>rgb[*]_{dd361Mi}</i>	<i>rgb[*]_{dd}</i>	<i>rgb[*]_{ds}</i>	<i>rgb[*]_{de}</i>																				
360	345	342	1.0	0.0	0.75	48.1	70.4	0.3	70.4	360	0.713	0.0	1.0	42.5	64.0	-17.0	66.2	345	1.0	0.0	0.75	0.678	0.0	1.0	41.9	61.9	-19.0	64.8	342	1.0	0.0	0.75			
361	346	343	1.0	0.0	0.733	48.1	70.3	1.3	70.3	361	0.73	0.0	1.0	42.8	64.9	-16.1	66.9	346	1.0	0.0	0.733	0.693	0.0	1.0	42.2	62.8	-18.2	65.4	343	1.0	0.0	0.733			
361	347	344	1.0	0.0	0.716	48.1	70.1	2.2	70.1	361	0.746	0.0	1.0	43.1	65.8	-15.1	67.5	347	1.0	0.0	0.717	0.709	0.0	1.0	42.4	63.7	-17.3	66.0	344	1.0	0.0	0.717			
362	348	345	1.0	0.0	0.7	48.1	69.9	3.1	70.0	362	0.782	0.0	1.0	43.9	66.9	-14.1	68.4	348	1.0	0.0	0.7	0.724	0.0	1.0	42.7	64.6	-16.4	66.6	345	1.0	0.0	0.7			
363	349	346	1.0	0.0	0.683	48.1	69.7	4.0	69.8	363	0.823	0.0	1.0	44.8	68.0	-13.1	69.3	349	1.0	0.0	0.683	0.74	0.0	1.0	43.0	65.4	-15.5	67.3	346	1.0	0.0	0.683			
364	350	347	1.0	0.0	0.666	48.0	69.5	4.9	69.7	364	0.864	0.0	1.0	45.7	69.2	-12.1	70.3	350	1.0	0.0	0.667	0.764	0.0	1.0	43.4	66.4	-14.5	68.0	347	1.0	0.0	0.667			
364	351	348	1.0	0.0	0.65	48.0	69.3	5.7	69.5	364	0.905	0.0	1.0	46.5	70.3	-11.0	71.2	351	1.0	0.0	0.65	0.803	0.0	1.0	44.3	67.5	-13.6	68.9	348	1.0	0.0	0.65			
365	352	349	1.0	0.0	0.633	48.0	69.0	6.6	69.3	365	0.946	0.0	1.0	47.3	71.4	-9.9	72.1	352	1.0	0.0	0.633	0.842	0.0	1.0	45.2	68.6	-12.7	69.8	349	1.0	0.0	0.633			
366	353	350	1.0	0.0	0.616	48.0	68.8	7.5	69.2	366	0.988	0.0	1.0	48.0	72.5	-8.8	73.1	353	1.0	0.0	0.617	0.881	0.0	1.0	46.1	69.7	-11.7	70.6	350	1.0	0.0	0.617			
367	354	351	1.0	0.0	0.6	47.9	68.7	8.5	69.2	367	1.0	0.0	0.973	48.3	72.6	-7.5	73.0	354	1.0	0.0	0.6	0.92	0.0	1.0	46.8	70.7	-10.7	71.5	351	1.0	0.0	0.6			
367	355	352	1.0	0.0	0.583	47.9	68.6	9.4	69.2	367	1.0	0.0	0.935	48.3	72.3	-6.2	72.5	355	1.0	0.0	0.583	0.959	0.0	1.0	47.5	71.8	-9.6	72.4	352	1.0	0.0	0.583			
368	356	353	1.0	0.0	0.566	47.9	68.4	10.3	69.2	368	1.0	0.0	0.896	48.3	71.9	-4.9	72.1	356	1.0	0.0	0.567	0.998	0.0	1.0	48.2	72.8	-8.5	73.3	353	1.0	0.0	0.567			
369	357	354	1.0	0.0	0.55	47.8	68.2	11.2	69.2	369	1.0	0.0	0.86	48.3	71.5	-3.6	71.6	357	1.0	0.0	0.55	1.0	0.0	0.965	48.3	72.6	-7.3	72.9	354	1.0	0.0	0.55			
370	358	355	1.0	0.0	0.533	47.8	68.1	12.1	69.1	370	1.0	0.0	0.827	48.2	71.2	-2.4	71.3	358	1.0	0.0	0.533	1.0	0.0	0.929	48.3	72.2	-6.0	72.5	355	1.0	0.0	0.533			
370	359	356	1.0	0.0	0.516	47.7	67.9	13.1	69.1	370	1.0	0.0	0.794	48.2	70.9	-1.1	70.9	359	1.0	0.0	0.517	1.0	0.0	0.892	48.3	71.8	-4.8	72.0	356	1.0	0.0	0.517			
371	360	352	1.0	0.0	0.5	47.7	67.7	14.0	69.1	371	1.0	0.0	0.761	48.2	70.6	0.0	70.6	360	1.0	0.0	0.5	0.949	0.0	1.0	47.3	71.5	-9.9	72.2	352	1.0	0.0	0.5			
372	361	353	1.0	0.0	0.483	47.7	67.5	15.0	69.2	372	1.0	0.0	0.735	48.1	70.3	1.2	70.3	361	1.0	0.0	0.483	0.995	0.0	1.0	48.2	72.7	-8.6	73.2	353	1.0	0.0	0.483			
373	362	354	1.0	0.0	0.466	47.7	67.3	16.1	69.2	373	1.0	0.0	0.712	48.1	70.1	2.4	70.1	362	1.0	0.0	0.467	1.0	0.0	0.962	48.3	72.5	-7.2	72.9	354	1.0	0.0	0.467			
374	363	355	1.0	0.0	0.45	47.7	67.2	17.1	69.3	374	1.0	0.0	0.69	48.1	69.8	3.7	69.9	363	1.0	0.0	0.45	1.0	0.0	0.919	48.3	72.1	-5.7	72.3	355	1.0	0.0	0.45			
375	364	356	1.0	0.0	0.433	47.7	67.0	18.2	69.4	375	1.0	0.0	0.667	48.1	69.5	4.9	69.7	364	1.0	0.0	0.433	1.0	0.0	0.876	48.3	71.7	-4.3	71.8	356	1.0	0.0	0.433			
376	365	357	1.0	0.0	0.416	47.7	66.7	19.2	69.5	376	1.0	0.0	0.645	48.1	69.2	6.1	69.5	365	1.0	0.0	0.417	1.0	0.0	0.839	48.3	71.4	-2.9	71.4	357	1.0	0.0	0.417			
376	366	358	1.0	0.0	0.4	47.7	66.5	20.3	69.5	376	1.0	0.0	0.623	48.0	68.9	7.2	69.3	366	1.0	0.0	0.4	1.0	0.0	0.802	48.2	71.0	-1.5	71.0	358	1.0	0.0	0.4			
377	367	359	1.0	0.0	0.383	47.7	66.3	21.3	69.6	377	1.0	0.0	0.601	48.0	68.8	8.4	69.3	367	1.0	0.0	0.383	1.0	0.0	0.765	48.2	70.6	-0.1	70.6	359	1.0	0.0	0.383			
378	368	360	1.0	0.0	0.366	47.7	66.1	22.3	69.7	378	1.0	0.0	0.58	47.9	68.6	9.6	69.3	368	1.0	0.0	0.367	1.0	0.0	0.735	48.1	70.3	1.2	70.3	360	1.0	0.0	0.367			
379	369	362	1.0	0.0	0.35	47.7	66.0	23.2	69.9	379	1.0	0.0	0.558	47.9	68.4	10.8	69.2	369	1.0	0.0	0.35	1.0	0.0	0.71	48.1	70.1	2.6	70.1	362	1.0	0.0	0.35			
380	370	363	1.0	0.0	0.333	47.7	65.8	24.2	70.2	380	1.0	0.0	0.536	47.8	68.1	12.0	69.2	370	1.0	0.0	0.333	1.0	0.0	0.685	48.1	69.8	3.9	69.9	363	1.0	0.0	0.333			
380	371	364	1.0	0.0	0.316	47.7	65.7	25.1	70.4	380	1.0	0.0	0.515	47.8	67.9	13.2	69.2	371	1.0	0.0	0.317	1.0	0.0	0.66	48.1	69.4	5.2	69.6	364	1.0	0.0	0.317			
381	372	365	1.0	0.0	0.3	47.7	65.6	26.0	70.6	381	1.0	0.0	0.494	47.8	67.7	14.4	69.2	372	1.0	0.0	0.3	1.0	0.0	0.635	48.1	69.1	6.6	69.4	365	1.0	0.0	0.3			
382	373	366	1.0	0.0	0.283	47.7	65.4	27.0	70.8	382	1.0	0.0	0.475	47.8	67.5	15.6	69.3	373	1.0	0.0	0.283	1.0	0.0	0.611	48.0	68.8	7.9	69.3	366	1.0	0.0	0.283			
383	374	367	1.0	0.0	0.266	47.7	65.2	27.9	71.0	383	1.0	0.0	0.456	47.8	67.3	16.8	69.3	374	1.0	0.0	0.267	1.0	0.0	0.587	48.0	68.6	9.2	69.3	367	1.0	0.0	0.267			
383	375	368	1.0	0.0	0.25	47.7	65.0	28.9	71.2	383	1.0	0.0	0.437	47.8	67.1	18.0	69.4	375	1.0	0.0	0.25	1.0	0.0	0.563	47.9	68.4	10.6	69.2	368	1.0	0.0	0.25			
384	376	369	1.0	0.0	0.233	47.6	65.0	29.7	71.5	384	1.0	0.0	0.418	47.8	66.8	19.2	69.5	376	1.0	0.0	0.233	1.0	0.0	0.539	47.8	68.2	11.9	69.2	369	1.0	0.0	0.233			
385	377	370	1.0	0.0	0.216	47.6	64.9	30.5	71.8	385	1.0	0.0	0.399	47.8	66.5	20.3	69.6	377	1.0	0.0	0.217	1.0	0.0	0.515	47.8	67.9	13.2	69.2	370	1.0	0.0	0.217			
385	378	372	1.0	0.0	0.2	47.6	64.9	31.4	72.1	385	1.0	0.0	0.38	47.8	66.3	21.5	69.7	378	1.0	0.0	0.2	1.0	0.0	0.492	47.8	67.6	14.5	69.2	372	1.0	0.0	0.2			
386	379	373	1.0	0.0	0.183	47.5	64.8	32.2	72.4	386	1.0	0.0	0.359	47.8	66.1	22.8	69.9	379	1.0	0.0	0.183	1.0	0.0	0.471	47.8	67.4	15.8	69.3	373	1.0	0.0	0.183			
387	380	374	1.0	0.0	0.166	47.5	64.7	33.0	72.7	387	1.0	0.0	0.337	47.8	65.9	24.0	70.2	380	1.0	0.0	0.167	1.0	0.0	0.45	47.8	67.2	17.2	69.4	374	1.0	0.0	0.167			
387	381	375	1.0	0.0	0.15	47.5	64.6	33.9	72.9	387	1.0	0.0	0.315	47.8	65.7	25.2	70.4	381	1.0	0.0	0.15	1.0	0.0	0.429	47.8	67.0	18.5	69.5	375	1.0	0.0	0.15			
388	382	376	1.0	0.0	0.133	47.4	64.5	34.7	73.2	388	1.0	0.0	0.293	47.7	65.5	26.5	70.7	382	1.0	0.0	0.133	1.0	0.0</												

RF0511L

TUB enregistrement: 20130201-RF05/RF05LOFP.PDF /.PS

TUB matériel: code=rha4ta

application pour la mesure des sorties sur offset, séparation cmykn6* (CMYK)

n	HC*File	rgb*File	icr*File	hsa*File	rgb*File	LabCM*File	cmykn*sep*File	cmyp*sep*File	hsa*File	rgb*File	LabCM*File	delta
324	R00Y_050_0500e	0.5	0.5	0.25	0.5	0.0	0.0	0.843	0.663	0.548	0.476	30.9
325	R00Y_050_0500e	0.5	0.0	0.125	0.5	0.0	0.0	0.84	0.426	0.554	47.8	64.9
326	R00Y_050_0500e	0.5	0.0	0.25	0.5	0.0	0.0	0.829	0.08	0.574	47.8	64.9
327	B61R_050_0500e	0.5	0.0	0.375	0.5	0.0	0.0	0.829	0.08	0.574	47.8	64.9
328	B61R_050_0500e	0.5	0.0	0.5	0.5	0.0	0.0	0.815	0.0	0.59	47.8	64.9
329	B40R_062_0620e	0.5	0.0	0.625	0.5	0.0	0.0	0.802	0.0	0.617	47.8	64.9
330	B34R_075_0750e	0.5	0.0	0.75	0.5	0.0	0.0	0.787	0.0	0.644	47.8	64.9
331	B28R_087_0870e	0.5	0.0	0.875	0.5	0.0	0.0	0.772	0.0	0.671	47.8	64.9
332	B23R_100_1000e	0.5	0.0	1.0	0.5	0.0	0.0	0.757	0.0	0.698	47.8	64.9
333	R23Y_100_0500e	0.5	0.125	0.5	0.5	0.066	0.0	0.742	0.0	0.725	47.8	64.9
334	R18Y_100_0370e	0.5	0.125	0.25	0.5	0.124	0.0	0.727	0.0	0.75	47.8	64.9
335	R18Y_100_0370e	0.5	0.125	0.25	0.5	0.124	0.0	0.712	0.0	0.765	47.8	64.9
336	B63R_080_0370e	0.5	0.125	0.375	0.5	0.124	0.0	0.697	0.0	0.78	47.8	64.9
337	B63R_080_0370e	0.5	0.125	0.375	0.5	0.124	0.0	0.682	0.0	0.795	47.8	64.9
338	B38R_062_0500e	0.5	0.125	0.625	0.5	0.261	0.0	0.667	0.0	0.81	47.8	64.9
339	B38R_062_0500e	0.5	0.125	0.625	0.5	0.261	0.0	0.652	0.0	0.825	47.8	64.9
340	B28R_087_0500e	0.5	0.125	0.875	0.5	0.497	0.0	0.637	0.0	0.84	47.8	64.9
341	B20R_100_0870e	0.5	0.125	1.0	0.5	0.714	0.0	0.622	0.0	0.855	47.8	64.9
342	R50Y_050_0500e	0.5	0.25	0.5	0.5	0.174	0.0	0.607	0.0	0.87	47.8	64.9
343	R31Y_050_0500e	0.5	0.25	0.25	0.5	0.202	0.0	0.592	0.0	0.885	47.8	64.9
344	R00Y_050_0250e	0.5	0.25	0.375	0.5	0.249	0.0	0.577	0.0	0.9	47.8	64.9
345	R00Y_050_0250e	0.5	0.25	0.375	0.5	0.249	0.0	0.562	0.0	0.915	47.8	64.9
346	B50R_062_0250e	0.5	0.25	0.625	0.5	0.487	0.0	0.547	0.0	0.93	47.8	64.9
347	B34R_062_0250e	0.5	0.25	0.625	0.5	0.351	0.0	0.532	0.0	0.945	47.8	64.9
348	B28R_075_0250e	0.5	0.25	0.75	0.5	0.326	0.0	0.517	0.0	0.96	47.8	64.9
349	B23R_087_0250e	0.5	0.25	0.875	0.5	0.272	0.0	0.502	0.0	0.975	47.8	64.9
350	B18R_100_0250e	0.5	0.25	1.0	0.5	0.237	0.0	0.487	0.0	0.99	47.8	64.9
351	R68Y_050_0370e	0.5	0.375	0.5	0.5	0.31	0.0	0.472	0.0	1.005	47.8	64.9
352	R50Y_050_0370e	0.5	0.375	0.25	0.5	0.337	0.0	0.457	0.0	1.02	47.8	64.9
353	R00Y_050_0120e	0.5	0.375	0.375	0.5	0.375	0.0	0.442	0.0	1.035	47.8	64.9
354	R00Y_050_0120e	0.5	0.375	0.375	0.5	0.375	0.0	0.427	0.0	1.05	47.8	64.9
355	B28R_062_0250e	0.5	0.375	0.625	0.5	0.425	0.0	0.412	0.0	1.065	47.8	64.9
356	B28R_062_0250e	0.5	0.375	0.625	0.5	0.425	0.0	0.397	0.0	1.08	47.8	64.9
357	B18R_087_0370e	0.5	0.375	0.75	0.5	0.475	0.0	0.382	0.0	1.095	47.8	64.9
358	B18R_087_0370e	0.5	0.375	0.75	0.5	0.475	0.0	0.367	0.0	1.11	47.8	64.9
359	B09R_100_0620e	0.5	0.375	1.0	0.5	0.526	0.0	0.352	0.0	1.125	47.8	64.9
360	Y00G_050_0500e	0.5	0.5	0.25	0.5	0.42	0.0	0.337	0.0	1.14	47.8	64.9
361	Y00G_050_0370e	0.5	0.5	0.125	0.5	0.44	0.0	0.322	0.0	1.155	47.8	64.9
362	Y00G_050_0250e	0.5	0.5	0.25	0.5	0.46	0.0	0.307	0.0	1.17	47.8	64.9
363	Y00G_050_0120e	0.5	0.5	0.375	0.5	0.48	0.0	0.292	0.0	1.185	47.8	64.9
364	NY_0500e	0.5	0.5	0.5	0.5	0.5	0.0	0.277	0.0	1.2	47.8	64.9
365	B00R_062_0120e	0.5	0.625	0.125	0.562	0.7	0.0	0.262	0.0	1.215	47.8	64.9
366	B00R_075_0250e	0.5	0.625	0.25	0.625	0.7	0.0	0.247	0.0	1.23	47.8	64.9
367	B00R_087_0370e	0.5	0.625	0.375	0.687	0.7	0.0	0.232	0.0	1.245	47.8	64.9
368	B00R_100_0500e	0.5	0.625	0.5	0.75	0.7	0.0	0.217	0.0	1.26	47.8	64.9
369	Y18G_062_0620e	0.5	0.625	0.625	0.312	1.0	0.0	0.202	0.0	1.275	47.8	64.9
370	Y18G_062_0620e	0.5	0.625	0.625	0.312	1.0	0.0	0.187	0.0	1.29	47.8	64.9
371	Y31G_062_0370e	0.5	0.625	0.25	0.625	0.375	0.0	0.172	0.0	1.305	47.8	64.9
372	Y31G_062_0370e	0.5	0.625	0.25	0.625	0.375	0.0	0.157	0.0	1.32	47.8	64.9
373	G00B_062_0120e	0.5	0.625	0.125	0.562	1.0	0.0	0.142	0.0	1.335	47.8	64.9
374	G00B_062_0120e	0.5	0.625	0.125	0.562	1.0	0.0	0.127	0.0	1.35	47.8	64.9
375	G50B_087_0370e	0.5	0.625	0.375	0.687	1.0	0.0	0.112	0.0	1.365	47.8	64.9
376	G50B_087_0370e	0.5	0.625	0.375	0.687	1.0	0.0	0.097	0.0	1.38	47.8	64.9
377	G80B_100_0500e	0.5	0.625	0.5	0.75	0.75	0.0	0.082	0.0	1.395	47.8	64.9
378	Y31G_075_0750e	0.5	0.75	0.25	0.75	0.387	0.0	0.067	0.0	1.41	47.8	64.9
379	Y38G_075_0750e	0.5	0.75	0.125	0.625	0.437	0.0	0.052	0.0	1.425	47.8	64.9
380	Y46G_075_0750e	0.5	0.75	0.25	0.625	0.437	0.0	0.037	0.0	1.44	47.8	64.9
381	Y62G_075_0750e	0.5	0.75	0.375	0.625	0.437	0.0	0.022	0.0	1.455	47.8	64.9
382	G00B_075_0250e	0.5	0.75	0.25	0.625	0.5	0.0	0.007	0.0	1.47	47.8	64.9
383	G28B_075_0250e	0.5	0.75	0.625	0.5	0.75	0.0	0.0	0.0	1.485	47.8	64.9
384	G50B_075_0250e	0.5	0.75	0.25	0.625	1.0	0.0	0.0	0.0	1.5	47.8	64.9
385	G68B_087_0370e	0.5	0.75	0.375	0.687	1.0	0.0	0.0	0.0	1.515	47.8	64.9
386	G75B_100_0500e	0.5	0.75	0.5	0.75	1.0	0.0	0.0	0.0	1.53	47.8	64.9
387	Y41G_087_0500e	0.5	0.875	0.125	0.875	0.437	0.0	0.0	0.0	1.545	47.8	64.9
388	Y50G_087_0500e	0.5	0.875	0.25	0.875	0.437	0.0	0.0	0.0	1.56	47.8	64.9
389	Y61G_087_0500e	0.5	0.875	0.375	0.875	0.437	0.0	0.0	0.0	1.575	47.8	64.9
390	Y62G_087_0500e	0.5	0.875	0.5	0.875	0.437	0.0	0.0	0.0	1.59	47.8	64.9
391	G00B_087_0370e	0.5	0.875	0.375	0.687	1.0	0.0	0.0	0.0	1.605	47.8	64.9
392	G15B_087_0370e	0.5	0.875	0.625	0.687	1.0	0.0	0.0	0.0	1.62	47.8	64.9
393	G34B_087_0370e	0.5	0.875	0.75	0.687	1.0	0.0	0.0	0.0	1.635	47.8	64.9
394	G50B_087_0370e	0.5	0.875	0.375	0.687	1.0	0.0	0.0	0.0	1.65	47.8	64.9
395	G61B_100_0500e	0.5	0.875	0.5	0.75	1.0	0.0	0.0	0.0	1.665	47.8	64.9
396	Y50G_100_0500e	0.5	1.0	0.0	0.5	1.0	0.0	0.0	0.0	1.68	47.8	64.9
397	Y58G_100_0870e	0.5	1.0	0.125	1.0	0.875	0.0	0.0	0.0	1.695	47.8	64.9
398	Y68G_100_0750e	0.5	1.0	0.25	1.0	0.75	0.0	0.0	0.0	1.71	47.8	64.9
399	Y81G_100_0620e	0.5	1.0	0.375	1.0	0.625	0.0	0.0	0.0	1.725	47.8	64.9
400	G00B_100_0500e	0.5	1.0	0.5	1.0	0.625	0.0	0.0	0.0	1.74	47.8	64.9
401	G11B_100_0500e	0.5	1.0	0.625	1.0	0.5	0.0	0.0	0.0	1.755	47.8	64.9
402	G28B_100_0500e	0.5	1.0	0.75	1.0	0.5	0.0	0.0	0.0	1.77	47.8	64.9
403	G38B_100_0500e	0.5	1.0	0.875	1.0	0.5	0.0	0.0	0.0	1.785	47.8	64.9
404	G50B_100_0500e	0.5	1.0	1.0	1.0	0.5	0.0	0.0	0.0	1.8	47.8	64.9

voir fichiers similaires: <http://130.149.60.45/~farbmetrik/RF05/RF05.HTM>
 informations techniques: <http://www.pis.bam.de> ou <http://130.149.60.45/~farbmetrik>

entrée : rgb/cmyk -> rgbd
 sortie : linéarisation 3D selon cmyk*de

graphique TUB-RF05; code de teinte: H*e=G75Be
 couleurs et différences, ΔE*_{uv}

RF050 - 2433-F

3-1132330-F0

http://130.149.60.45/~farbmetrik/RF05/RF05LOFP.PDF /.PS; linéarisation 3D
F: linéarisation 3D RF05/RF05LF30FP.DAT dans fichier (F), page 25/33

Table with 15 columns: n, HHC*F05, Rgb*F05, iet*F05, Hsa*F05, rrgb*F05, LabCM*F05, cmyn*sep*F05, cmyn*sep*Rate, LabCM*F05, rrgb*F05, Hsa*F05, LabCM*F05, LabCM*F05, delta. Rows list various color calibration patches and their corresponding values.

voir fichiers similaires: http://130.149.60.45/~farbmetrik/RF05/RF05.HTM
informations techniques: http://www.ps.bam.de ou http://130.149.60.45/~farbmetrik

entrée : rgb/cmyk -> rgbd
sortie : linéarisation 3D selon cmyk*de

graphique TUB-RF05; code de teinte: H*e=G75Be
couleurs et différences, ΔE*^{ab}

RF050-TN; 25/33-F

3-1132430-F0

3-1132430-F0

http://130.149.60.45/~farbmetrik/RF05/RF05L0FP.PDF /.PS; linéarisation 3D F: linéarisation 3D RF05/RF05LF30FP.DAT dans fichier (F), page 29/33

Table with 10 columns: n, H/C*F0e, r/gb*F0e, i/cr*F0e, H/s*F0e, r/gb*F0e, Lab/Cb*F0e, cmyn*sep.F0e, r/gb*F0e, Lab/Cb*F0e, delta. Rows 729-809.

entrée : rgb/cmyk -> r/gb/de sortie : linéarisation 3D selon cmyk*de

graphique TUB-RF05; code de teinte: H*e=G75Be couleurs et différences, ΔE*^{*}

RF0511L

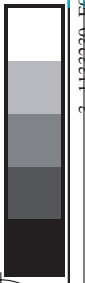
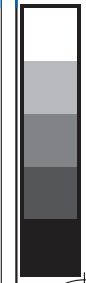
TUB enregistrement: 20130201-RF05/RF05LOFP.PDF /.PS

TUB matériel: code=rha4ta

application pour la mesure des sorties sur offset, séparation cmyk6* (CMYK)

http://130.149.60.45/~farbmetrik/RF05/RF05LOFP.PDF /.PS; linéarisation 3D
F: linéarisation 3D RF05/RF05LF30FP.DAT dans fichier (F), page 30/33

n	HC*File	rgb*File	icr*File	hsa*File	rgb*File	LabC*File	cmyk*sep*File	hsa*File	rgb*File	LabC*File	delta
810	NW_1000e	0.875 0.875 1.0	1.0 1.0 1.0	1.0 1.0 1.0	0.954 0.954 1.0	0.0 0.0 0.0	0.0 0.0 0.0	360 360 360	1.0 1.0 1.0	95.4 95.4 100	0.0 0.0 0.0
811	BOOR_100.012e	0.875 0.875 1.0	1.0 1.0 1.0	1.0 1.0 1.0	0.921 1.0	0.0 0.0 0.0	0.157 0.157 0.157	248 248 248	0.0 0.0 0.0	37.9 37.9 37.9	0.0 0.0 0.0
812	BOOR_100.025e	0.75 0.75 1.0	1.0 1.0 1.0	1.0 1.0 1.0	0.843 1.0	0.0 0.0 0.0	0.295 0.295 0.295	248 248 248	0.0 0.0 0.0	37.9 37.9 37.9	0.0 0.0 0.0
813	BOOR_100.037e	0.625 0.625 1.0	1.0 1.0 1.0	1.0 1.0 1.0	0.765 1.0	0.0 0.0 0.0	0.419 0.419 0.419	248 248 248	0.0 0.0 0.0	37.9 37.9 37.9	0.0 0.0 0.0
814	BOOR_100.050e	0.5 0.5 1.0	1.0 1.0 1.0	1.0 1.0 1.0	0.687 1.0	0.0 0.0 0.0	0.569 0.569 0.569	248 248 248	0.0 0.0 0.0	37.9 37.9 37.9	0.0 0.0 0.0
815	BOOR_100.062e	0.375 0.375 1.0	1.0 1.0 1.0	1.0 1.0 1.0	0.609 1.0	0.0 0.0 0.0	0.758 0.758 0.758	248 248 248	0.0 0.0 0.0	37.9 37.9 37.9	0.0 0.0 0.0
816	BOOR_100.075e	0.25 0.25 1.0	1.0 1.0 1.0	1.0 1.0 1.0	0.531 1.0	0.0 0.0 0.0	1.0 1.0 1.0	248 248 248	0.0 0.0 0.0	37.9 37.9 37.9	0.0 0.0 0.0
817	BOOR_100.087e	0.125 0.125 1.0	1.0 1.0 1.0	1.0 1.0 1.0	0.452 1.0	0.0 0.0 0.0	1.5 1.5 1.5	248 248 248	0.0 0.0 0.0	37.9 37.9 37.9	0.0 0.0 0.0
818	BOOR_100.100e	0.0 0.0 1.0	1.0 1.0 1.0	1.0 1.0 1.0	0.374 1.0	0.0 0.0 0.0	2.0 2.0 2.0	248 248 248	0.0 0.0 0.0	37.9 37.9 37.9	0.0 0.0 0.0
819	YOOC_100.012e	0.875 0.875 1.0	1.0 1.0 1.0	1.0 1.0 1.0	0.98 0.875	0.0 0.0 0.0	0.032 0.032 0.032	360 360 360	1.0 1.0 1.0	95.4 95.4 100	0.0 0.0 0.0
820	BOOR_087.012e	0.875 0.875 1.0	1.0 1.0 1.0	1.0 1.0 1.0	0.796 0.875	0.0 0.0 0.0	0.161 0.161 0.161	248 248 248	0.0 0.0 0.0	37.9 37.9 37.9	0.0 0.0 0.0
821	BOOR_087.025e	0.75 0.75 1.0	1.0 1.0 1.0	1.0 1.0 1.0	0.718 0.875	0.0 0.0 0.0	0.322 0.322 0.322	248 248 248	0.0 0.0 0.0	37.9 37.9 37.9	0.0 0.0 0.0
822	BOOR_087.037e	0.625 0.625 1.0	1.0 1.0 1.0	1.0 1.0 1.0	0.64 0.875	0.0 0.0 0.0	0.484 0.484 0.484	248 248 248	0.0 0.0 0.0	37.9 37.9 37.9	0.0 0.0 0.0
823	BOOR_087.050e	0.5 0.5 1.0	1.0 1.0 1.0	1.0 1.0 1.0	0.562 0.875	0.0 0.0 0.0	0.646 0.646 0.646	248 248 248	0.0 0.0 0.0	37.9 37.9 37.9	0.0 0.0 0.0
824	BOOR_087.062e	0.375 0.375 1.0	1.0 1.0 1.0	1.0 1.0 1.0	0.484 0.875	0.0 0.0 0.0	0.808 0.808 0.808	248 248 248	0.0 0.0 0.0	37.9 37.9 37.9	0.0 0.0 0.0
825	BOOR_087.075e	0.25 0.25 1.0	1.0 1.0 1.0	1.0 1.0 1.0	0.406 0.875	0.0 0.0 0.0	1.0 1.0 1.0	248 248 248	0.0 0.0 0.0	37.9 37.9 37.9	0.0 0.0 0.0
826	BOOR_087.087e	0.125 0.125 1.0	1.0 1.0 1.0	1.0 1.0 1.0	0.327 0.875	0.0 0.0 0.0	1.5 1.5 1.5	248 248 248	0.0 0.0 0.0	37.9 37.9 37.9	0.0 0.0 0.0
827	BOOR_087.100e	0.0 0.0 1.0	1.0 1.0 1.0	1.0 1.0 1.0	0.249 0.875	0.0 0.0 0.0	2.0 2.0 2.0	248 248 248	0.0 0.0 0.0	37.9 37.9 37.9	0.0 0.0 0.0
828	YOOC_100.025e	0.875 0.875 1.0	1.0 1.0 1.0	1.0 1.0 1.0	0.96 0.75	0.0 0.0 0.0	0.052 0.052 0.052	360 360 360	1.0 1.0 1.0	95.4 95.4 100	0.0 0.0 0.0
829	YOOC_100.037e	0.75 0.75 1.0	1.0 1.0 1.0	1.0 1.0 1.0	0.885 0.75	0.0 0.0 0.0	0.189 0.189 0.189	360 360 360	1.0 1.0 1.0	95.4 95.4 100	0.0 0.0 0.0
830	NW_075e	0.625 0.625 1.0	1.0 1.0 1.0	1.0 1.0 1.0	0.808 0.75	0.0 0.0 0.0	0.332 0.332 0.332	360 360 360	1.0 1.0 1.0	95.4 95.4 100	0.0 0.0 0.0
831	BOOR_075.012e	0.625 0.625 1.0	1.0 1.0 1.0	1.0 1.0 1.0	0.718 0.75	0.0 0.0 0.0	0.484 0.484 0.484	360 360 360	1.0 1.0 1.0	95.4 95.4 100	0.0 0.0 0.0
832	BOOR_075.025e	0.5 0.5 1.0	1.0 1.0 1.0	1.0 1.0 1.0	0.639 0.75	0.0 0.0 0.0	0.646 0.646 0.646	360 360 360	1.0 1.0 1.0	95.4 95.4 100	0.0 0.0 0.0
833	BOOR_075.037e	0.375 0.375 1.0	1.0 1.0 1.0	1.0 1.0 1.0	0.562 0.75	0.0 0.0 0.0	0.808 0.808 0.808	360 360 360	1.0 1.0 1.0	95.4 95.4 100	0.0 0.0 0.0
834	BOOR_075.050e	0.25 0.25 1.0	1.0 1.0 1.0	1.0 1.0 1.0	0.484 0.75	0.0 0.0 0.0	1.0 1.0 1.0	360 360 360	1.0 1.0 1.0	95.4 95.4 100	0.0 0.0 0.0
835	BOOR_075.062e	0.125 0.125 1.0	1.0 1.0 1.0	1.0 1.0 1.0	0.406 0.75	0.0 0.0 0.0	1.5 1.5 1.5	360 360 360	1.0 1.0 1.0	95.4 95.4 100	0.0 0.0 0.0
836	BOOR_075.075e	0.0 0.0 1.0	1.0 1.0 1.0	1.0 1.0 1.0	0.327 0.75	0.0 0.0 0.0	2.0 2.0 2.0	360 360 360	1.0 1.0 1.0	95.4 95.4 100	0.0 0.0 0.0
837	YOOC_100.037e	0.875 0.875 1.0	1.0 1.0 1.0	1.0 1.0 1.0	0.98 0.625	0.0 0.0 0.0	0.032 0.032 0.032	360 360 360	1.0 1.0 1.0	95.4 95.4 100	0.0 0.0 0.0
838	YOOC_087.025e	0.875 0.875 1.0	1.0 1.0 1.0	1.0 1.0 1.0	0.835 0.625	0.0 0.0 0.0	0.114 0.114 0.114	360 360 360	1.0 1.0 1.0	95.4 95.4 100	0.0 0.0 0.0
839	YOOC_087.037e	0.75 0.75 1.0	1.0 1.0 1.0	1.0 1.0 1.0	0.75 0.625	0.0 0.0 0.0	0.229 0.229 0.229	360 360 360	1.0 1.0 1.0	95.4 95.4 100	0.0 0.0 0.0
840	NW_062e	0.625 0.625 1.0	1.0 1.0 1.0	1.0 1.0 1.0	0.625 0.625	0.0 0.0 0.0	0.443 0.443 0.443	360 360 360	1.0 1.0 1.0	95.4 95.4 100	0.0 0.0 0.0
841	BOOR_062.012e	0.625 0.625 1.0	1.0 1.0 1.0	1.0 1.0 1.0	0.546 0.625	0.0 0.0 0.0	0.605 0.605 0.605	360 360 360	1.0 1.0 1.0	95.4 95.4 100	0.0 0.0 0.0
842	BOOR_062.025e	0.5 0.5 1.0	1.0 1.0 1.0	1.0 1.0 1.0	0.468 0.625	0.0 0.0 0.0	0.767 0.767 0.767	360 360 360	1.0 1.0 1.0	95.4 95.4 100	0.0 0.0 0.0
843	BOOR_062.037e	0.375 0.375 1.0	1.0 1.0 1.0	1.0 1.0 1.0	0.39 0.625	0.0 0.0 0.0	0.929 0.929 0.929	360 360 360	1.0 1.0 1.0	95.4 95.4 100	0.0 0.0 0.0
844	BOOR_062.050e	0.25 0.25 1.0	1.0 1.0 1.0	1.0 1.0 1.0	0.312 0.625	0.0 0.0 0.0	1.0 1.0 1.0	360 360 360	1.0 1.0 1.0	95.4 95.4 100	0.0 0.0 0.0
845	BOOR_062.062e	0.125 0.125 1.0	1.0 1.0 1.0	1.0 1.0 1.0	0.234 0.625	0.0 0.0 0.0	1.5 1.5 1.5	360 360 360	1.0 1.0 1.0	95.4 95.4 100	0.0 0.0 0.0
846	YOOC_100.050e	0.0 0.0 1.0	1.0 1.0 1.0	1.0 1.0 1.0	0.156 0.625	0.0 0.0 0.0	2.0 2.0 2.0	360 360 360	1.0 1.0 1.0	95.4 95.4 100	0.0 0.0 0.0
847	YOOC_087.037e	0.875 0.875 1.0	1.0 1.0 1.0	1.0 1.0 1.0	0.815 0.5	0.0 0.0 0.0	0.132 0.132 0.132	360 360 360	1.0 1.0 1.0	95.4 95.4 100	0.0 0.0 0.0
848	YOOC_087.050e	0.75 0.75 1.0	1.0 1.0 1.0	1.0 1.0 1.0	0.729 0.5	0.0 0.0 0.0	0.254 0.254 0.254	360 360 360	1.0 1.0 1.0	95.4 95.4 100	0.0 0.0 0.0
849	YOOC_062.012e	0.625 0.625 1.0	1.0 1.0 1.0	1.0 1.0 1.0	0.605 0.5	0.0 0.0 0.0	0.409 0.409 0.409	360 360 360	1.0 1.0 1.0	95.4 95.4 100	0.0 0.0 0.0
850	NW_050e	0.5 0.5 1.0	1.0 1.0 1.0	1.0 1.0 1.0	0.5 0.5	0.0 0.0 0.0	0.581 0.581 0.581	360 360 360	1.0 1.0 1.0	95.4 95.4 100	0.0 0.0 0.0
851	BOOR_050.012e	0.375 0.375 1.0	1.0 1.0 1.0	1.0 1.0 1.0	0.421 0.5	0.0 0.0 0.0	0.743 0.743 0.743	360 360 360	1.0 1.0 1.0	95.4 95.4 100	0.0 0.0 0.0
852	BOOR_050.025e	0.25 0.25 1.0	1.0 1.0 1.0	1.0 1.0 1.0	0.343 0.5	0.0 0.0 0.0	0.905 0.905 0.905	360 360 360	1.0 1.0 1.0	95.4 95.4 100	0.0 0.0 0.0
853	BOOR_050.037e	0.125 0.125 1.0	1.0 1.0 1.0	1.0 1.0 1.0	0.265 0.5	0.0 0.0 0.0	1.0 1.0 1.0	360 360 360	1.0 1.0 1.0	95.4 95.4 100	0.0 0.0 0.0
854	BOOR_050.050e	0.0 0.0 1.0	1.0 1.0 1.0	1.0 1.0 1.0	0.187 0.5	0.0 0.0 0.0	1.5 1.5 1.5	360 360 360	1.0 1.0 1.0	95.4 95.4 100	0.0 0.0 0.0
855	YOOC_100.062e	0.0 0.0 1.0	1.0 1.0 1.0	1.0 1.0 1.0	0.109 0.375	0.0 0.0 0.0	2.0 2.0 2.0	360 360 360	1.0 1.0 1.0	95.4 95.4 100	0.0 0.0 0.0
856	YOOC_087.050e	0.875 0.875 1.0	1.0 1.0 1.0	1.0 1.0 1.0	0.795 0.375	0.0 0.0 0.0	0.166 0.166 0.166	360 360 360	1.0 1.0 1.0	95.4 95.4 100	0.0 0.0 0.0
857	YOOC_087.062e	0.75 0.75 1.0	1.0 1.0 1.0	1.0 1.0 1.0	0.713 0.375	0.0 0.0 0.0	0.288 0.288 0.288	360 360 360	1.0 1.0 1.0	95.4 95.4 100	0.0 0.0 0.0
858	YOOC_062.025e	0.625 0.625 1.0	1.0 1.0 1.0	1.0 1.0 1.0	0.585 0.375	0.0 0.0 0.0	0.451 0.451 0.451	360 360 360	1.0 1.0 1.0	95.4 95.4 100	0.0 0.0 0.0
859	YOOC_050.012e	0.5 0.5 1.0	1.0 1.0 1.0	1.0 1.0 1.0	0.468 0.375	0.0 0.0 0.0	0.613 0.613 0.613	360 360 360	1.0 1.0 1.0	95.4 95.4 100	0.0 0.0 0.0
860	NW_037e	0.375 0.375 1.0	1.0 1.0 1.0	1.0 1.0 1.0	0.375 0.375	0.0 0.0 0.0	0.775 0.775 0.775	360 360 360	1.0 1.0 1.0	95.4 95.4 100	0.0 0.0 0.0
861	BOOR_037.012e	0.25 0.25 1.0	1.0 1.0 1.0	1.0 1.0 1.0	0.296 0.375	0.0 0.0 0.0	0.937 0.937 0.937	360 360 360	1.0 1.0 1.0	95.4 95.4 100	0.0 0.0 0.0
862	BOOR_037.025e	0.125 0.125 1.0	1.0 1.0 1.0	1.0 1.0 1.0	0.218 0.375	0.0 0.0 0.0	1.0 1.0 1.0	360 360 360	1.0 1.0 1.0	95.4 95.4 100	0.0 0.0 0.0
863	BOOR_037.037e	0.0 0.0 1.0	1.0 1.0 1.0	1.0 1.0 1.0	0.14 0.375	0.0 0.0 0.0	1.5 1.5 1.5	360 360 360	1.0 1.0 1.0	95.4 95.4 100	0.0 0.0 0.0
864	YOOC_100.075e	0.0 0.0 1.0	1.0 1.0 1.0	1.0 1.0 1.0	0.062 0.375	0.0 0.0 0.0	2.0 2.0 2.0	360 360 360	1.0 1.0 1.0	95.4 95.4 100	0.0 0.0 0.0
865	YOOC_087.050e	0.875 0.875 1.0	1.0 1.0 1.0	1.0 1.0 1.0	0.718 0.25	0.0 0.0 0.0	0.179 0.179 0.179	360 360 360	1.0 1.0 1.0	95.4 95.4 100	0.0 0.0 0.0
866	YOOC_087.062e	0.75 0.75 1.0	1.0 1.0 1.0	1.0 1.0 1.0	0.639 0.25	0.0 0.0 0.0	0.301 0.301 0.301	360 360 360	1.0 1.0 1.0	95.4 95.4 100	0.0 0.0 0.0
867	YOOC_062.037e	0.625 0.625 1.0	1.0 1.0 1.0	1.0 1.0 1.0	0.562 0.25	0.0 0.0 0.0	0.423 0.423 0.423	360 360 360	1.0 1.0 1.0	95.4 95.4 100	0.0 0.0 0.0
868	YOOC_050.037e	0.5 0.5 1.0	1.0 1.0 1.0	1.0 1.0 1.0	0.484 0.25	0.0 0.0 0.0	0.545 0.545 0.545	360 360 360	1.0 1.0 1.0	95.4 95.4 100	0.0 0.0 0.0
869	YOOC_037.012e	0.375 0.375 1.0	1.0 1.0 1.0	1.0 1.0 1.0	0.385 0.25	0.0 0.0 0.0	0.667 0.667 0.667	360 360 360	1.0 1.0 1.0	95.4 95.4 100	0.0 0.0 0.0
870	NW_025e	0.25 0.25 1.0	1.0 1.0 1.0	1.0 1.							



n	HC*Fate	rgb*Fate	icT*Fate	hsa*Fate	rgb*Fate	LabC*Fate	cmyp*sep*Fate	cmyp*sep*Fate	hsa*Fate	rgb*Fate	LabC*Fate	cmyp*sep*Fate	cmyp*sep*Fate	hsa*Fate	rgb*Fate	LabC*Fate	cmyp*sep*Fate	cmyp*sep*Fate	hsa*Fate	rgb*Fate	LabC*Fate	cmyp*sep*Fate	cmyp*sep*Fate	
1053	NW_086de	0.866	0.866	0.866	0.866	0.866	0.866	0.866	0.866	0.866	0.866	0.866	0.866	0.866	0.866	0.866	0.866	0.866	0.866	0.866	0.866	0.866	0.866	0.866
1054	NW_093de	0.933	0.933	0.933	0.933	0.933	0.933	0.933	0.933	0.933	0.933	0.933	0.933	0.933	0.933	0.933	0.933	0.933	0.933	0.933	0.933	0.933	0.933	0.933
1055	NW_100de	1.0	1.0	1.0	1.0	1.0	1.0	1.0	1.0	1.0	1.0	1.0	1.0	1.0	1.0	1.0	1.0	1.0	1.0	1.0	1.0	1.0	1.0	1.0
1056	NW_006de	0.066	0.066	0.066	0.066	0.066	0.066	0.066	0.066	0.066	0.066	0.066	0.066	0.066	0.066	0.066	0.066	0.066	0.066	0.066	0.066	0.066	0.066	0.066
1057	NW_013de	0.133	0.133	0.133	0.133	0.133	0.133	0.133	0.133	0.133	0.133	0.133	0.133	0.133	0.133	0.133	0.133	0.133	0.133	0.133	0.133	0.133	0.133	0.133
1058	NW_020de	0.2	0.2	0.2	0.2	0.2	0.2	0.2	0.2	0.2	0.2	0.2	0.2	0.2	0.2	0.2	0.2	0.2	0.2	0.2	0.2	0.2	0.2	0.2
1060	NW_026de	0.266	0.266	0.266	0.266	0.266	0.266	0.266	0.266	0.266	0.266	0.266	0.266	0.266	0.266	0.266	0.266	0.266	0.266	0.266	0.266	0.266	0.266	0.266
1061	NW_033de	0.333	0.333	0.333	0.333	0.333	0.333	0.333	0.333	0.333	0.333	0.333	0.333	0.333	0.333	0.333	0.333	0.333	0.333	0.333	0.333	0.333	0.333	0.333
1062	NW_040de	0.4	0.4	0.4	0.4	0.4	0.4	0.4	0.4	0.4	0.4	0.4	0.4	0.4	0.4	0.4	0.4	0.4	0.4	0.4	0.4	0.4	0.4	0.4
1063	NW_046de	0.466	0.466	0.466	0.466	0.466	0.466	0.466	0.466	0.466	0.466	0.466	0.466	0.466	0.466	0.466	0.466	0.466	0.466	0.466	0.466	0.466	0.466	0.466
1064	NW_053de	0.533	0.533	0.533	0.533	0.533	0.533	0.533	0.533	0.533	0.533	0.533	0.533	0.533	0.533	0.533	0.533	0.533	0.533	0.533	0.533	0.533	0.533	0.533
1065	NW_060de	0.6	0.6	0.6	0.6	0.6	0.6	0.6	0.6	0.6	0.6	0.6	0.6	0.6	0.6	0.6	0.6	0.6	0.6	0.6	0.6	0.6	0.6	0.6
1066	NW_066de	0.666	0.666	0.666	0.666	0.666	0.666	0.666	0.666	0.666	0.666	0.666	0.666	0.666	0.666	0.666	0.666	0.666	0.666	0.666	0.666	0.666	0.666	0.666
1067	NW_073de	0.734	0.734	0.734	0.734	0.734	0.734	0.734	0.734	0.734	0.734	0.734	0.734	0.734	0.734	0.734	0.734	0.734	0.734	0.734	0.734	0.734	0.734	0.734
1068	NW_080de	0.8	0.8	0.8	0.8	0.8	0.8	0.8	0.8	0.8	0.8	0.8	0.8	0.8	0.8	0.8	0.8	0.8	0.8	0.8	0.8	0.8	0.8	0.8
1069	NW_086de	0.866	0.866	0.866	0.866	0.866	0.866	0.866	0.866	0.866	0.866	0.866	0.866	0.866	0.866	0.866	0.866	0.866	0.866	0.866	0.866	0.866	0.866	0.866
1070	NW_093de	0.933	0.933	0.933	0.933	0.933	0.933	0.933	0.933	0.933	0.933	0.933	0.933	0.933	0.933	0.933	0.933	0.933	0.933	0.933	0.933	0.933	0.933	0.933
1071	NW_100de	1.0	1.0	1.0	1.0	1.0	1.0	1.0	1.0	1.0	1.0	1.0	1.0	1.0	1.0	1.0	1.0	1.0	1.0	1.0	1.0	1.0	1.0	1.0
1072	NW_006de	0.066	0.066	0.066	0.066	0.066	0.066	0.066	0.066	0.066	0.066	0.066	0.066	0.066	0.066	0.066	0.066	0.066	0.066	0.066	0.066	0.066	0.066	0.066
1073	NW_013de	0.133	0.133	0.133	0.133	0.133	0.133	0.133	0.133	0.133	0.133	0.133	0.133	0.133	0.133	0.133	0.133	0.133	0.133	0.133	0.133	0.133	0.133	0.133
1074	ROX_100_100de	1.0	1.0	1.0	1.0	1.0	1.0	1.0	1.0	1.0	1.0	1.0	1.0	1.0	1.0	1.0	1.0	1.0	1.0	1.0	1.0	1.0	1.0	1.0
1075	GS0B_100_100de	0.0	0.0	0.0	0.0	0.0	0.0	0.0	0.0	0.0	0.0	0.0	0.0	0.0	0.0	0.0	0.0	0.0	0.0	0.0	0.0	0.0	0.0	0.0
1076	Y06C_100_100de	1.0	1.0	1.0	1.0	1.0	1.0	1.0	1.0	1.0	1.0	1.0	1.0	1.0	1.0	1.0	1.0	1.0	1.0	1.0	1.0	1.0	1.0	1.0
1077	B06M_100_100de	0.0	0.0	0.0	0.0	0.0	0.0	0.0	0.0	0.0	0.0	0.0	0.0	0.0	0.0	0.0	0.0	0.0	0.0	0.0	0.0	0.0	0.0	0.0
1078	B08L_100_100de	0.0	0.0	0.0	0.0	0.0	0.0	0.0	0.0	0.0	0.0	0.0	0.0	0.0	0.0	0.0	0.0	0.0	0.0	0.0	0.0	0.0	0.0	0.0
1079	B50R_100_100de	1.0	1.0	1.0	1.0	1.0	1.0	1.0	1.0	1.0	1.0	1.0	1.0	1.0	1.0	1.0	1.0	1.0	1.0	1.0	1.0	1.0	1.0	1.0

delta