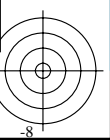
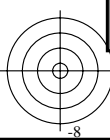
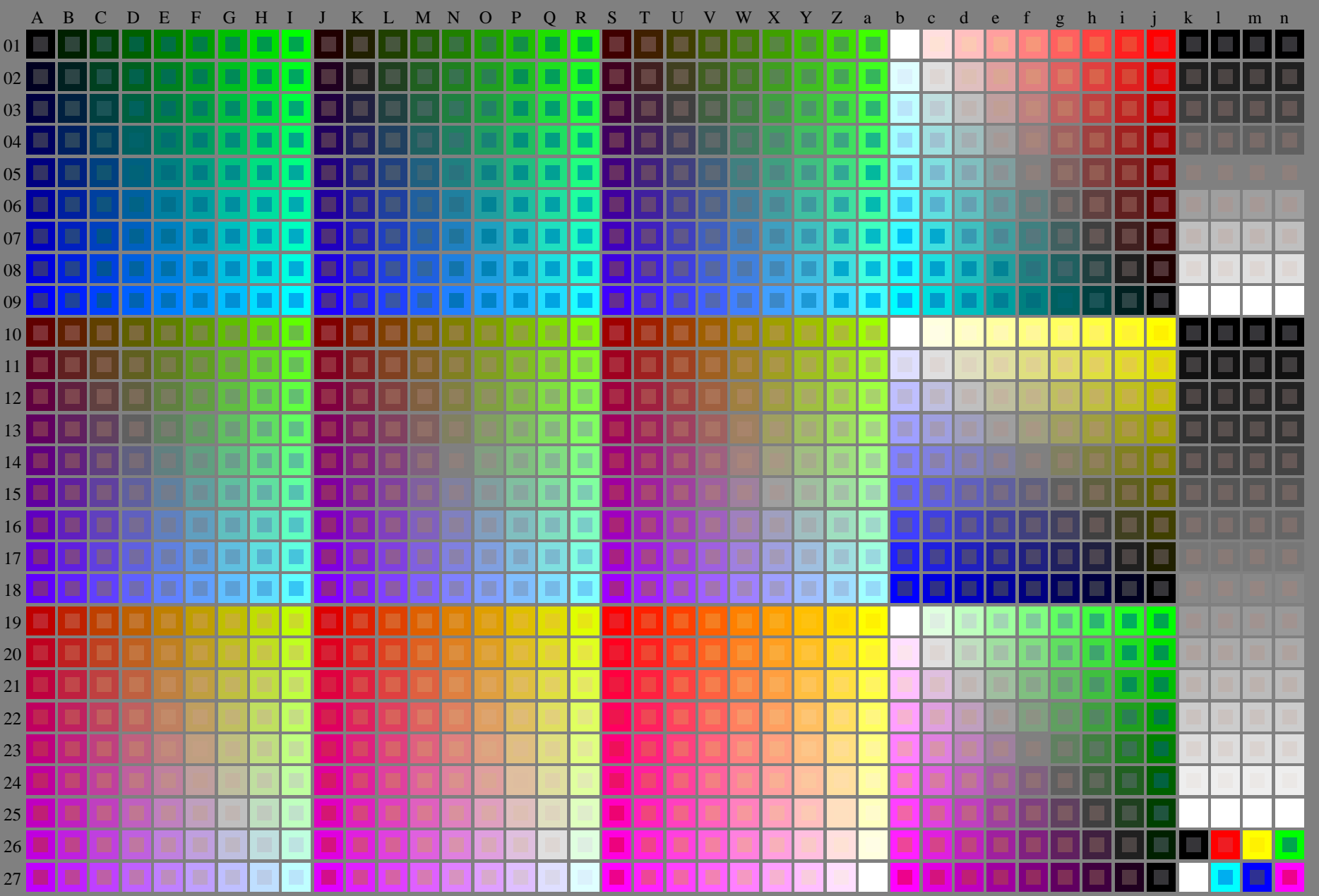


voir fichiers similaires: <http://130.149.60.45/~farbmetrik/RF52/RF52.HTM>
informations techniques: <http://www.ps.bam.de> ou <http://130.149.60.45/~farbmetrik>

TUB enregistrement: 20130201-RF52/RF52L0NA.TXT /.PS
application pour la mesure de sortie sur écran
TUB matériel: code=rh4ta



3-013030-L0 RF520-7N

rgb + cmy0 (A..j + k26..n27), 000n (k), w (l), nnn0 (m), www (n), 3D=0

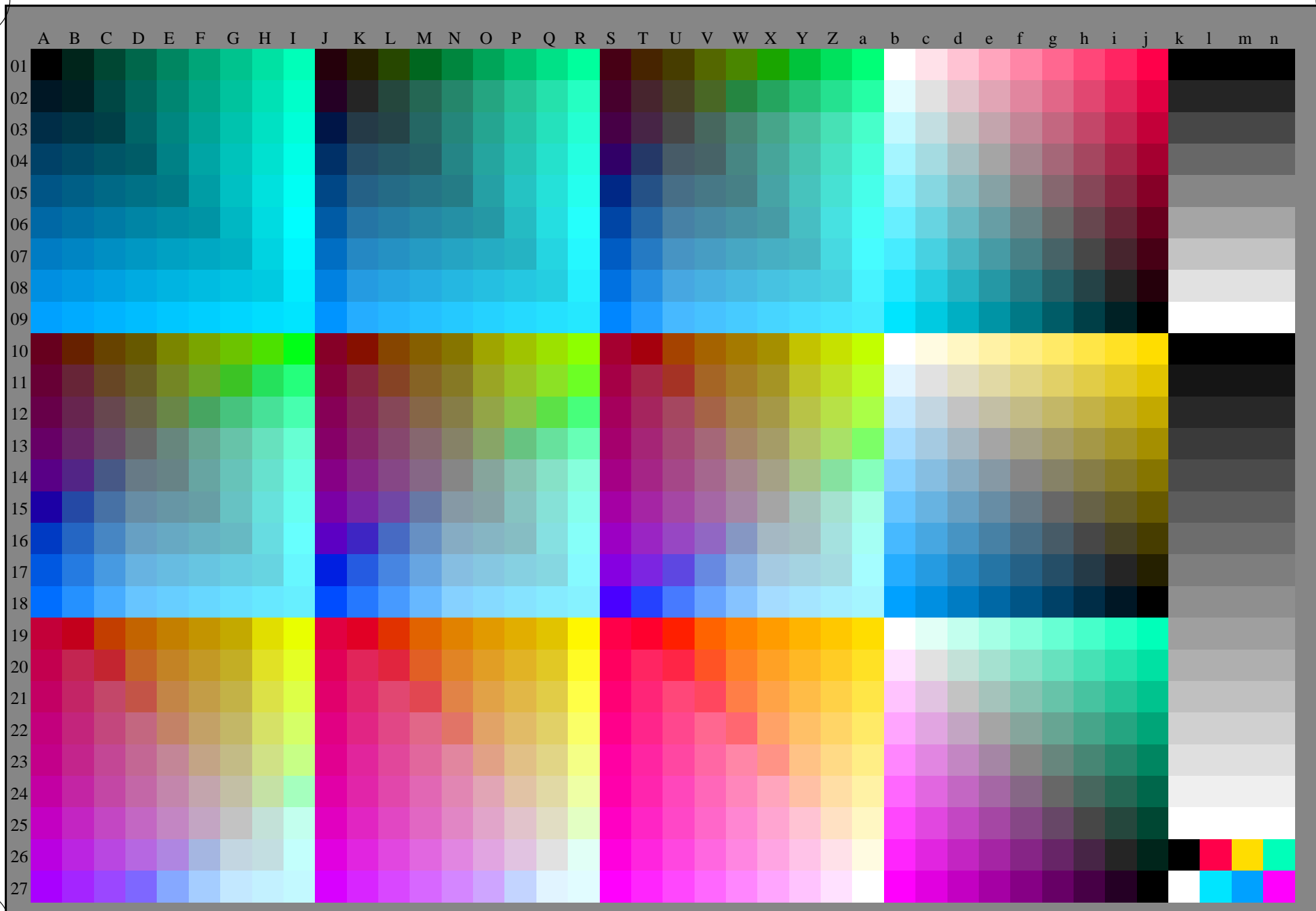
graphique TUB-RF52; 1080 couleurs standard
graphique conforme à DIN 33872, 3D=0, de=1, sRGB

entrée : rgb/cmyk -> rgb/cmyk
sortie : aucun changement



voir fichiers similaires: <http://130.149.60.45/~farbmetrik/RF52/RF52.HTM>
informations techniques: <http://www.ps.bam.de> ou <http://130.149.60.45/~farbmetrik>

TUB enregistrement: 20130201-RF52/RF52L0NA.TXT /.PS TUB matériel: code=rha4ta
application pour la mesure de sortie sur écran, aucune séparation



3-013130-L0 RF520-71

rgb(A_n), 3D=0

graphique TUB-RF52; 1080 couleurs standard
graphique conforme à DIN 33872, 3D=0, de=1, sRGB

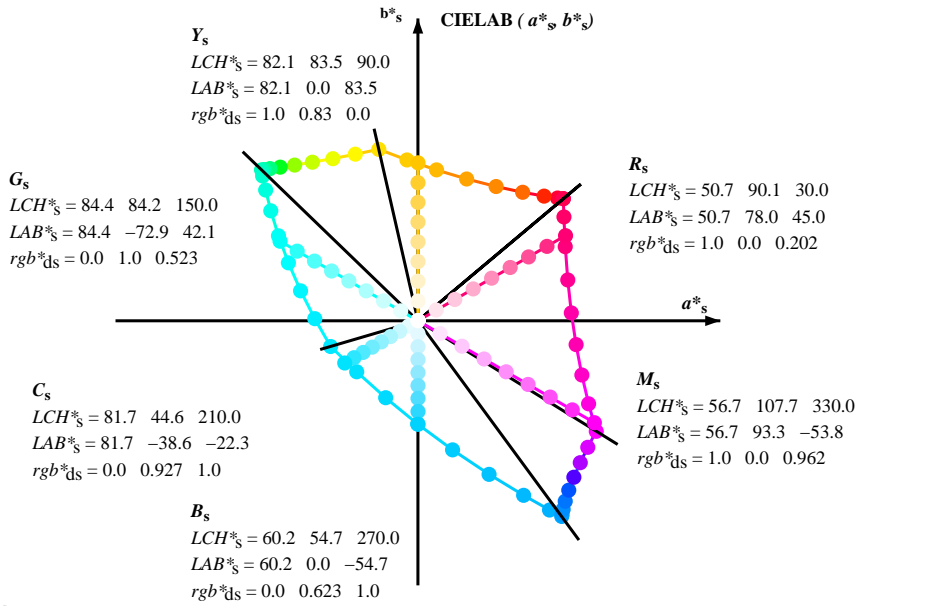
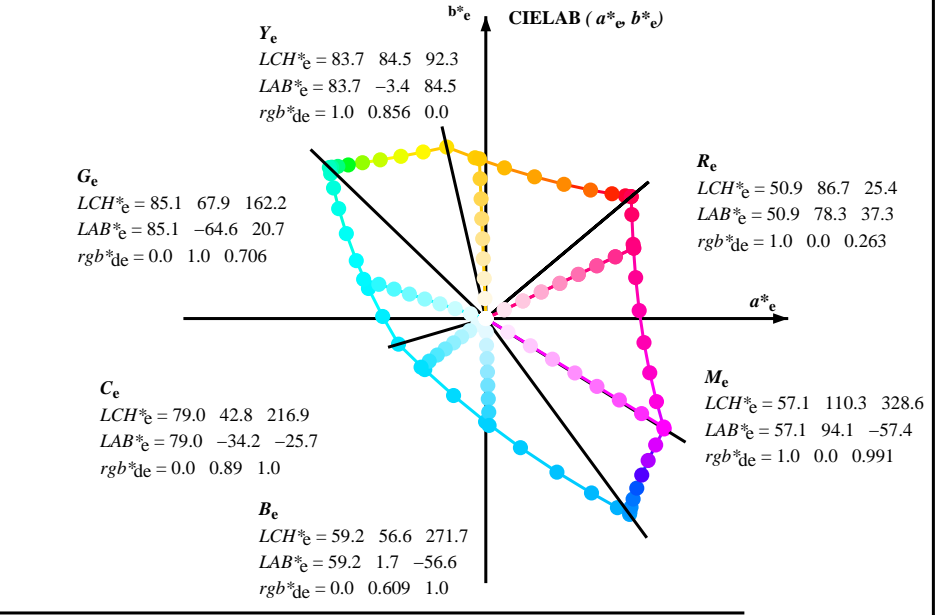
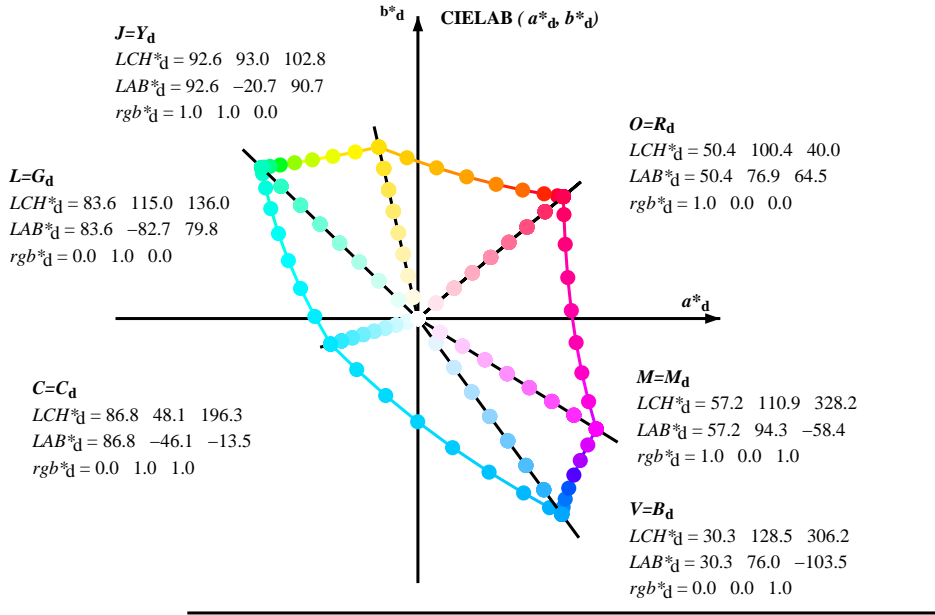
entrée : rgb/cmyk -> rgb_e
sortie : transférer à rgb_e

3-013130-F0

Couleur maximale dans le système colorimétrique : sRGB standard device; no separation, D65 pour l'entrée et sortie; Six angles de teinte à 60 degrés couleurs standard RYGBM_s; h_{ab,ds} = 30.0, 90.0, 150.0, 210.0, 270.0, 330.0; Six angles de teinte des couleurs périphériques RYGBM_d; h_{ab,d} = 40.0, 102.9, 136.0, 196.4, 306.3, 328.2; Six angles de teinte des couleurs élémentaires RYGBM_e; h_{ab,e} = 25.5, 92.3, 162.2, 217.0, 271.7, 328.6

voir fichiers similaires: http://130.149.60.45/~farbmetrik/RF52/RF52.HTM
informations techniques: http://www.ps.bam.de ou http://130.149.60.45/~farbmetrik

TUB enregistrement: 20130201-RF52/RF52LONA.TXT /.PS
application pour la mesure de sortie sur écran, aucune séparation
TUB matériel: code=rh4ta



(a*_d b*_d), (a*_s b*_s), (a*_e b*_e)
rgb* LCH* LAB*
h_{ab,s} rgb*
h_{ab,s} = atan [r*_d cos(30) + g*_d cos(150)] / [r*_d sin(30) + g*_d sin(150) + b*_d sin(270)] (1)}

h_{ab,s}}
s: h_{ab,s} = 30.0, 90.0, 150.0, 210.0, 270.0, 330.0, 390.0 (i=0,6)

h_{48ab,sij} = h_{ab,si} + j [h_{ab,si+1} - h_{ab,si}] / 8 (i = 0, 1, ..., 5; j = 0, 1, ..., 7) (2)}}}}

h_{360ab,sij} = h_{ab,si} + j [h_{ab,si+1} - h_{ab,si}] / 60 (i = 0, 1, ..., 5; j = 0, 1, ..., 59) (3)}}}}

h_{ab,e}}
e: h_{ab,e} = 25.5, 92.3, 162.2, 217.0, 271.7, 328.6, 385.5 (i=0,6)

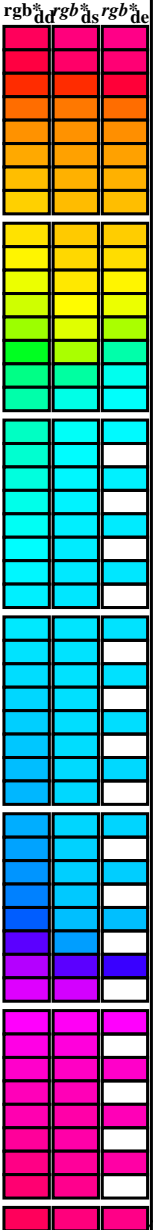
h_{48ab,eij} = h_{ab,ei} + j [h_{ab,ei+1} - h_{ab,ei}] / 8 (i = 0, 1, ..., 5; j = 0, 1, ..., 7) (4)}}}}

h_{360ab,eij} = h_{ab,ei} + j [h_{ab,ei+1} - h_{ab,ei}] / 60 (i = 0, 1, ..., 5; j = 0, 1, ..., 59) (5)}}}}

h_{ab,d}}
rgb*_{d}}

Couleur maximale dans le système colorimétrique : sRGB standard device; no separation, D65 pour l'entrée et sortie; Six angles de teinte à 60 degrés couleurs standard RYGBM_s; h_{ab,ds} = 30.0, 90.0, 150.0, 210.0, 270.0, 330.0;
Six angles de teinte des couleurs périphériques RYGBM_d; h_{ab,d} = 40.0, 102.9, 136.0, 196.4, 306.3, 328.2; Six angles de teinte des couleurs élémentaires RYGBM_e; h_{ab,e} = 25.5, 92.3, 162.2, 217.0, 271.7, 328.6

Table with 48 columns and 48 rows of color data. Columns are grouped into LAB* and RGB* sections. Each row contains numerical values for color coordinates.

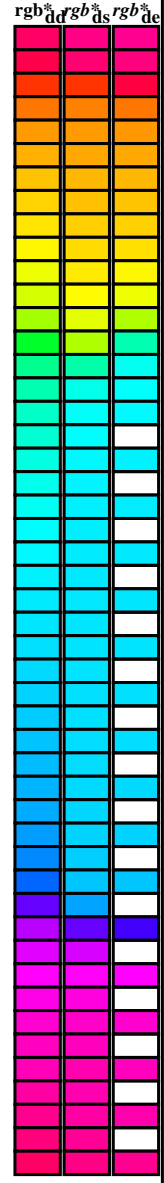


voir fichiers similaires: http://130.149.60.45/~farbmetrik/RF52/RF52LONA.TXT /.PS
informations techniques: http://www.ps.bam.de ou http://130.149.60.45/~farbmetrik

TUB enregistrement: 20130201-RF52/RF52LONA.TXT /.PS TUB matériel: code=rh4ta
application pour la mesure de sortie sur écran, aucune séparation

Couleur maximale dans le système colorimétrique : sRGB standard device; no separation, D65 pour l'entrée et sortie; Six angles de teinte à 60 degrés couleurs standard *RYGCBM_s*; $h_{ab,ds} = 30.0, 90.0, 150.0, 210.0, 270.0, 330.0$;
Six angles de teinte des couleurs périphériques *RYGCBM_d*; $h_{ab,d} = 40.0, 102.9, 136.0, 196.4, 306.3, 328.2$; Six angles de teinte des couleurs élémentaires *RYGCBM_c*; $h_{ab,c} = 25.5, 92.3, 162.2, 217.0, 271.7, 328.6$

<i>h_{ab,d}</i>	<i>h_{ab,s}</i>	<i>h_{ab,e}</i>	<i>rgb^a_{dd64M}</i>	<i>LAB^a_{ddx64M (x=LabCh)}</i>	<i>rgb^a_{dex361M}</i>	<i>LAB^a_{dex361M}</i>
40.0	30.0	25.4	1.0 0.0 0.0	50.4 76.9 64.5 100.4 40.0	1.0 0.0 0.263 50.9	78.3 37.3 86.7 25
41.3	37.5	33.8	1.0 0.125 0.0	51.5 73.9 64.9 98.3 41.3	1.0 0.0 0.156 50.7	77.7 51.0 92.9 33
44.6	45.0	42.1	1.0 0.25 0.0	54.0 66.7 65.9 93.8 44.6	1.0 0.157 0.0	52.2 72.0 65.3 97.2 42
50.7	52.5	50.5	1.0 0.375 0.0	58.2 55.4 67.9 87.7 50.7	1.0 0.358 0.0	57.7 56.9 67.8 88.6 49
59.7	60.0	58.8	1.0 0.5 0.0	63.6 41.3 71.0 82.2 59.7	1.0 0.488 0.0	63.1 42.8 70.9 82.8 58
71.0	67.5	67.2	1.0 0.625 0.0	70.1 25.7 75.0 79.3 71.0	1.0 0.577 0.0	67.6 31.8 73.9 80.5 66
82.9	75.0	75.6	1.0 0.75 0.0	77.2 9.8 79.7 80.4 82.9	1.0 0.673 0.0	72.8 19.8 77.3 79.8 75
93.8	82.5	83.9	1.0 0.875 0.0	84.8 -5.7 85.0 85.2 93.8	1.0 0.755 0.0	77.5 9.3 80.1 80.6 83
102.8	90.0	92.3	1.0 1.0 0.0	92.6 -20.7 90.7 93.0 102.8	1.0 0.857 0.0	83.7 -3.3 84.5 84.6 92
110.5	97.5	101.0	0.875 1.0 0.0	90.4 -33.1 88.1 94.1 110.5	1.0 0.967 0.0	90.6 -16.4 89.5 91.0 100
117.6	105.0	109.7	0.75 1.0 0.0	88.5 -44.9 85.8 96.8 117.6	0.888 1.0 0.0	90.7 -31.7 88.5 94.0 109
123.6	112.5	118.5	0.625 1.0 0.0	86.9 -55.8 83.9 100.7 123.6	0.743 1.0 0.0	88.5 -45.4 85.8 97.1 117
128.3	120.0	127.2	0.5 1.0 0.0	85.7 -65.2 82.4 105.1 128.3	0.529 1.0 0.0	86.0 -62.9 82.9 104.1 127
131.8	127.5	136.0	0.375 1.0 0.0	84.7 -72.8 81.2 109.1 131.8	0.132 1.0 0.0	83.8 -81.2 80.1 114.1 135
134.1	135.0	144.7	0.25 1.0 0.0	84.1 -78.2 80.5 112.2 134.1	0.0 1.0 0.41	84.1 -76.8 54.3 94.1 144
135.5	142.5	153.4	0.125 1.0 0.0	83.7 -81.4 80.0 114.2 135.5	0.0 1.0 0.573	84.6 -70.9 36.3 79.8 152
136.0	150.0	162.2	0.0 1.0 0.0	83.6 -82.7 79.8 115.0 136.0	0.0 1.0 0.706	85.2 -64.6 20.7 67.9 162
137.0	157.5	169.0	0.0 1.0 0.125	83.6 -82.1 76.6 112.3 137.0	0.0 1.0 0.778	85.5 -60.6 12.2 61.9 168
139.3	165.0	175.9	0.0 1.0 0.25	83.8 -80.5 69.1 106.1 139.3	0.0 1.0 0.847	85.9 -56.4 4.0 56.7 175
143.2	172.5	182.7	0.0 1.0 0.375	84.0 -77.8 58.1 97.1 143.2	0.0 1.0 0.9	86.2 -53.2 -2.0 53.3 182
148.6	180.0	189.6	0.0 1.0 0.5	84.3 -73.7 44.9 86.4 148.6	0.0 1.0 0.952	86.6 -49.8 -8.3 50.6 189
155.8	187.5	196.4	0.0 1.0 0.625	84.7 -68.5 30.6 75.0 155.8	0.0 1.0 0.997	86.9 -46.3 -13.2 48.3 195
165.6	195.0	203.2	0.0 1.0 0.75	85.3 -62.0 15.9 64.0 165.6	0.0 0.963	1.0 84.3 -42.5 -18.2 46.4 203
178.8	202.5	210.1	0.0 1.0 0.875	86.0 -54.5 1.0 54.5 178.8	0.0 0.929	1.0 81.8 -38.8 -22.1 44.7 209
196.3	210.0	216.9	0.0 1.0 1.0	86.8 -46.1 -13.5 48.1 196.3	0.0 0.89	1.0 79.1 -34.2 -25.7 42.9 216
219.8	217.5	223.8	0.0 0.875 1.0	77.9 -32.3 -27.0 42.1 219.8	0.0 0.859	1.0 76.9 -30.7 -29.0 42.4 223
247.2	225.0	230.6	0.0 0.75 1.0	69.1 -17.0 -40.7 44.1 247.2	0.0 0.826	1.0 74.5 -27.1 -33.1 43.0 230
269.8	232.5	237.5	0.0 0.625 1.0	60.3 -0.1 -54.6 54.6 269.8	0.0 0.797	1.0 72.4 -23.5 -36.3 43.4 237
285.0	240.0	244.3	0.0 0.5 1.0	51.7 18.3 -68.3 70.7 285.0	0.0 0.763	1.0 70.1 -18.9 -39.5 44.0 244
294.8	247.5	251.2	0.0 0.375 1.0	43.8 37.6 -81.2 89.5 294.8	0.0 0.731	1.0 67.8 -15.0 -43.1 45.8 250
301.1	255.0	258.0	0.0 0.25 1.0	37.1 55.9 -92.3 107.9 301.1	0.0 0.69	1.0 64.9 -10.1 -48.0 49.2 258
304.8	262.5	264.8	0.0 0.125 1.0	32.4 69.5 -100.0 121.8 304.8	0.0 0.655	1.0 62.4 -5.0 -51.8 52.1 264
306.2	270.0	271.7	0.0 0.0 1.0	30.3 76.0 -103.5 128.5 306.2	0.0 0.609	1.0 59.3 1.7 -56.5 56.6 271
306.6	277.5	278.8	0.125 0.0 1.0	31.0 76.2 -102.4 127.7 306.6	0.0 0.555	1.0 55.5 9.3 -62.9 63.7 278
307.5	285.0	285.9	0.25 0.0 1.0	32.6 76.8 -99.8 125.9 307.5	0.0 0.488	1.0 51.0 19.9 -69.6 72.5 285
309.2	292.5	293.0	0.375 0.0 1.0	35.1 77.9 -95.5 123.3 309.2	0.0 0.404	1.0 45.7 32.7 -78.5 85.2 292
311.6	300.0	300.1	0.5 0.0 1.0	38.5 79.8 -89.7 120.0 311.6	0.0 0.27	1.0 38.2 52.8 -90.6 105.0 300
314.8	307.5	307.2	0.625 0.0 1.0	42.7 82.5 -82.7 116.8 314.8	0.0 0.146	0.0 31.3 76.4 -102.0 127.5 306
318.8	315.0	314.3	0.75 0.0 1.0	47.2 85.8 -75.1 114.0 318.8	0.0 0.605	0.0 42.1 82.1 -83.8 117.4 314
323.3	322.5	321.4	0.875 0.0 1.0	52.1 89.8 -66.9 112.0 323.3	0.0 0.811	0.0 49.7 87.9 -71.0 113.1 321
328.2	330.0	328.6	1.0 0.0 1.0	57.2 94.3 -58.4 110.9 328.2	0.0 0.992	0.0 57.2 94.2 -57.4 110.3 328
334.0	337.5	335.7	1.0 0.0 0.875	55.6 90.3 -43.9 100.4 334.0	0.0 0.856	0.0 55.4 89.9 -41.4 99.0 335
341.6	345.0	342.8	1.0 0.0 0.75	54.2 86.7 -28.6 91.3 341.6	1.0 0.0	0.0 735 54.1 86.5 -26.6 90.6 342
351.4	352.5	349.9	1.0 0.0 0.625	53.0 83.6 -12.6 84.6 351.4	1.0 0.0	0.0 665 53.3 84.5 -15.6 86.0 349
362.9	360.0	357.0	1.0 0.0 0.5	52.0 81.1 4.1 81.2 362.9	1.0 0.0	0.0 618 53.0 83.6 -11.6 84.4 352
375.2	367.5	364.1	1.0 0.0 0.375	51.3 79.2 21.6 82.1 375.2	1.0 0.0	0.0 533 52.3 82.2 -0.1 82.2 359
386.7	375.0	371.2	1.0 0.0 0.25	50.8 77.9 39.2 87.2 386.7	1.0 0.0	0.0 441 51.7 80.7 12.5 81.7 368
395.4	382.5	378.3	1.0 0.0 0.125	50.6 77.2 54.9 94.8 395.4	1.0 0.0	0.0 361 51.3 79.3 23.6 82.8 376
400.0	390.0	385.4	1.0 0.0 0.0	50.4 76.9 64.5 100.4 400.0	1.0 0.0	0.0 263 50.9 78.3 37.3 86.7 385



voir fichiers similaires: <http://130.149.60.45/~farbmetrik/RF52/RF52L0NA.TXT /.PS>
informations techniques: <http://www.ps.bam.de> ou <http://130.149.60.45/~farbmetrik>

TUB enregistrement: 20130201-RF52/RF52L0NA.TXT /.PS TUB matériel: code=rh4ta
application pour la mesure de sortie sur écran, aucune séparation

Couleur maximale dans le système colorimétrique : sRGB standard device; no separation, D65 pour l'entrée et sortie; Six angles de teinte à 60 degrés couleurs standard *RYGCBM_s*; *h_{ab,ds}* = 30.0, 90.0, 150.0, 210.0, 270.0, 330.0; Six angles de teinte des couleurs périphériques *RYGCBM_d*; *h_{ab,d}* = 40.0, 102.9, 136.0, 306.3, 328.2; Six angles de teinte des couleurs élémentaires *RYGCBM_c*; *h_{ab,c}* = 25.5, 92.3, 162.2, 217.0, 271.7, 328.6

<i>h_{ab,d}</i>	<i>h_{ab,s}</i>	<i>h_{ab,c}</i>	<i>rgb^a_{dd361M}</i>	<i>LAB^a_{ddx361Mi (x=LabCh)}</i>	<i>R_d</i>	<i>rgb^a_{ds361Mi}</i>	<i>LAB^a_{dsx361Mi (x=LabCh)}</i>	<i>R_s</i>	<i>rgb^a_{dd361Mi}</i>	<i>LAB^a_{de361Mi}</i>	<i>LAB^a_{dex361Mi (x=LabCh)}</i>	<i>rgb^a_{dd361Mi}</i>	<i>rgb^a_{dd}</i>	<i>rgb^a_{ds}</i>	<i>rgb^a_{de}</i>
40	30	25	1.0 0.0 0.0	50.4 76.9 64.5 100.4 40	1.0	1.0 0.0 0.203 50.8 78.0 45.1 90.1 30	1.0	1.0 0.0 0.0	1.0 0.0 0.263 50.9 78.3 37.3 86.7 25	1.0	1.0 0.0 0.0				
40	31	26	1.0 0.016 0.0	50.6 76.5 64.6 100.1 40	1.0	1.0 0.0 0.189 50.7 78.0 46.9 91.0 31	1.0	1.0 0.017 0.0	1.0 0.0 0.251 50.9 78.0 39.0 87.2 26	1.0	1.0 0.017 0.0				
40	32	27	1.0 0.033 0.0	50.7 76.1 64.6 99.8 40	1.0	1.0 0.0 0.174 50.7 77.9 48.7 91.8 32	1.0	1.0 0.033 0.0	1.0 0.0 0.236 50.8 78.0 41.0 88.1 27	1.0	1.0 0.033 0.0				
40	33	28	1.0 0.05 0.0	50.9 75.7 64.7 99.6 40	1.0	1.0 0.0 0.16 50.7 77.7 50.5 92.7 33	1.0	1.0 0.05 0.0	1.0 0.0 0.22 50.8 78.1 43.0 89.1 28	1.0	1.0 0.05 0.0				
40	34	29	1.0 0.066 0.0	51.0 75.3 64.7 99.3 40	1.0	1.0 0.0 0.146 50.6 77.6 52.3 93.6 34	1.0	1.0 0.067 0.0	1.0 0.0 0.204 50.8 78.0 44.9 90.1 29	1.0	1.0 0.067 0.0				
40	35	31	1.0 0.083 0.0	51.1 74.9 64.8 99.0 40	1.0	1.0 0.0 0.131 50.6 77.3 54.2 94.4 35	1.0	1.0 0.083 0.0	1.0 0.0 0.188 50.7 78.0 46.9 91.0 31	1.0	1.0 0.083 0.0				
41	36	32	1.0 0.1 0.0	51.3 74.5 64.8 98.7 41	1.0	1.0 0.0 0.11 50.6 77.3 56.1 95.5 36	1.0	1.0 0.1 0.0	1.0 0.0 0.172 50.7 77.9 49.0 92.0 32	1.0	1.0 0.1 0.0				
41	37	33	1.0 0.116 0.0	51.4 74.1 64.9 98.5 41	1.0	1.0 0.0 0.082 50.6 77.2 58.2 96.7 37	1.0	1.0 0.117 0.0	1.0 0.0 0.156 50.7 77.7 51.0 92.9 33	1.0	1.0 0.117 0.0				
41	38	34	1.0 0.133 0.0	51.7 73.4 65.0 98.0 41	1.0	1.0 0.0 0.055 50.5 77.2 60.3 98.0 38	1.0	1.0 0.133 0.0	1.0 0.0 0.14 50.6 77.5 53.0 93.9 34	1.0	1.0 0.133 0.0				
41	39	35	1.0 0.15 0.0	52.0 72.4 65.2 97.4 41	1.0	1.0 0.0 0.028 50.5 77.1 62.4 99.2 39	1.0	1.0 0.15 0.0	1.0 0.0 0.123 50.6 77.2 55.1 94.9 35	1.0	1.0 0.15 0.0				
42	40	36	1.0 0.166 0.0	52.3 71.4 65.3 96.8 42	1.0	1.0 0.0 0.0 50.5 76.9 64.6 100.4 40	1.0	1.0 0.167 0.0	1.0 0.0 0.093 50.6 77.3 57.4 96.3 36	1.0	1.0 0.167 0.0				
42	41	37	1.0 0.183 0.0	52.7 70.5 65.5 96.2 42	1.0	1.0 0.095 0.0 51.3 74.6 64.9 98.9 41	1.0	1.0 0.183 0.0	1.0 0.0 0.062 50.5 77.2 59.7 97.6 37	1.0	1.0 0.183 0.0				
43	42	38	1.0 0.2 0.0	53.0 69.5 65.6 95.6 43	1.0	1.0 0.151 0.0 52.1 72.4 65.2 97.5 42	1.0	1.0 0.2 0.0	1.0 0.0 0.032 50.5 77.1 62.1 99.0 38	1.0	1.0 0.2 0.0				
43	43	39	1.0 0.216 0.0	53.4 68.6 65.7 95.0 43	1.0	1.0 0.188 0.0 52.8 70.3 65.5 96.1 43	1.0	1.0 0.217 0.0	1.0 0.0 0.001 50.5 76.9 64.5 100.4 39	1.0	1.0 0.217 0.0				
44	44	41	1.0 0.233 0.0	53.7 67.6 65.8 94.4 44	1.0	1.0 0.225 0.0 53.6 68.2 65.8 94.8 44	1.0	1.0 0.233 0.0	1.0 0.102 0.0 51.4 74.4 64.9 98.8 41	1.0	1.0 0.233 0.0				
44	45	42	1.0 0.25 0.0	54.0 66.7 65.9 93.8 44	1.0	1.0 0.256 0.0 54.3 66.1 66.1 93.5 45	1.0	1.0 0.25 0.0	1.0 0.157 0.0 52.2 72.0 65.3 97.2 42	1.0	1.0 0.25 0.0				
45	46	43	1.0 0.266 0.0	54.6 65.1 66.3 93.0 45	1.0	1.0 0.277 0.0 55.0 64.3 66.6 92.5 46	1.0	1.0 0.267 0.0	1.0 0.199 0.0 53.0 69.6 65.6 95.7 43	1.0	1.0 0.267 0.0				
46	47	44	1.0 0.283 0.0	55.1 63.6 66.6 92.2 46	1.0	1.0 0.297 0.0 55.6 62.4 66.9 91.5 47	1.0	1.0 0.283 0.0	1.0 0.24 0.0 53.9 67.3 65.9 94.2 44	1.0	1.0 0.283 0.0				
47	48	45	1.0 0.3 0.0	55.7 62.1 66.9 91.3 47	1.0	1.0 0.318 0.0 56.3 60.6 67.3 90.5 48	1.0	1.0 0.3 0.0	1.0 0.267 0.0 54.7 65.1 66.4 93.0 45	1.0	1.0 0.3 0.0				
47	49	46	1.0 0.316 0.0	56.2 60.6 67.2 90.5 47	1.0	1.0 0.338 0.0 57.0 58.7 67.6 89.5 49	1.0	1.0 0.317 0.0	1.0 0.29 0.0 55.4 63.1 66.8 91.9 46	1.0	1.0 0.317 0.0				
48	50	47	1.0 0.333 0.0	56.8 59.1 67.5 89.7 48	1.0	1.0 0.359 0.0 57.7 56.9 67.8 88.5 50	1.0	1.0 0.333 0.0	1.0 0.313 0.0 56.2 61.0 67.2 90.8 47	1.0	1.0 0.333 0.0				
49	51	48	1.0 0.35 0.0	57.3 57.6 67.7 88.9 49	1.0	1.0 0.378 0.0 58.3 55.1 68.1 87.6 51	1.0	1.0 0.35 0.0	1.0 0.336 0.0 56.9 59.0 67.5 89.7 48	1.0	1.0 0.35 0.0				
50	52	49	1.0 0.366 0.0	57.9 56.2 67.9 88.1 50	1.0	1.0 0.392 0.0 58.9 53.6 68.6 87.0 52	1.0	1.0 0.367 0.0	1.0 0.358 0.0 57.7 56.9 67.8 88.6 49	1.0	1.0 0.367 0.0				
51	53	51	1.0 0.383 0.0	58.5 54.5 68.2 87.3 51	1.0	1.0 0.406 0.0 59.6 52.0 69.0 86.4 53	1.0	1.0 0.383 0.0	1.0 0.379 0.0 58.4 55.0 68.1 87.6 51	1.0	1.0 0.383 0.0				
52	54	52	1.0 0.4 0.0	59.3 52.6 68.8 86.6 52	1.0	1.0 0.42 0.0 60.2 50.4 69.4 85.8 54	1.0	1.0 0.4 0.0	1.0 0.395 0.0 59.1 53.2 68.7 86.9 52	1.0	1.0 0.4 0.0				
53	55	53	1.0 0.416 0.0	60.0 50.7 69.3 85.9 53	1.0	1.0 0.433 0.0 60.8 48.8 69.8 85.2 55	1.0	1.0 0.417 0.0	1.0 0.41 0.0 59.7 51.5 69.1 86.2 53	1.0	1.0 0.417 0.0				
54	56	54	1.0 0.433 0.0	60.7 48.8 69.7 85.1 54	1.0	1.0 0.447 0.0 61.4 47.3 70.1 84.5 56	1.0	1.0 0.433 0.0	1.0 0.426 0.0 60.4 49.7 69.6 85.5 54	1.0	1.0 0.433 0.0				
56	57	55	1.0 0.45 0.0	61.4 46.9 70.1 84.4 56	1.0	1.0 0.461 0.0 62.0 45.7 70.4 83.9 57	1.0	1.0 0.45 0.0	1.0 0.441 0.0 61.1 48.0 69.9 84.8 55	1.0	1.0 0.45 0.0				
57	58	56	1.0 0.466 0.0	62.2 45.1 70.4 83.6 57	1.0	1.0 0.475 0.0 62.6 44.1 70.7 83.3 58	1.0	1.0 0.467 0.0	1.0 0.457 0.0 61.8 46.2 70.3 84.1 56	1.0	1.0 0.467 0.0				
58	59	57	1.0 0.483 0.0	62.9 43.2 70.7 82.9 58	1.0	1.0 0.489 0.0 63.2 42.6 70.9 82.7 59	1.0	1.0 0.483 0.0	1.0 0.472 0.0 62.5 44.5 70.6 83.4 57	1.0	1.0 0.483 0.0				
59	60	58	1.0 0.5 0.0	63.6 41.3 71.0 82.2 59	1.0	1.0 0.502 0.0 63.8 41.1 71.2 82.2 60	1.0	1.0 0.5 0.0	1.0 0.488 0.0 63.1 42.8 70.9 82.8 58	1.0	1.0 0.5 0.0				
61	61	60	1.0 0.516 0.0	64.5 39.3 71.7 81.8 61	1.0	1.0 0.513 0.0 64.4 39.7 71.6 81.9 61	1.0	1.0 0.517 0.0	1.0 0.502 0.0 63.8 41.1 71.2 82.2 60	1.0	1.0 0.517 0.0				
62	62	61	1.0 0.533 0.0	65.3 37.2 72.4 81.4 62	1.0	1.0 0.525 0.0 64.9 38.3 72.1 81.7 62	1.0	1.0 0.533 0.0	1.0 0.515 0.0 64.4 39.5 71.7 81.9 61	1.0	1.0 0.533 0.0				
64	63	62	1.0 0.55 0.0	66.2 35.1 73.0 81.0 64	1.0	1.0 0.536 0.0 65.5 37.0 72.5 81.4 63	1.0	1.0 0.55 0.0	1.0 0.527 0.0 65.1 38.0 72.2 81.6 62	1.0	1.0 0.55 0.0				
65	64	63	1.0 0.566 0.0	67.1 33.0 73.5 80.6 65	1.0	1.0 0.547 0.0 66.1 35.6 72.9 81.1 64	1.0	1.0 0.567 0.0	1.0 0.54 0.0 65.7 36.5 72.7 81.3 63	1.0	1.0 0.567 0.0				
67	65	64	1.0 0.583 0.0	67.9 31.0 74.0 80.3 67	1.0	1.0 0.558 0.0 66.7 34.2 73.3 80.9 65	1.0	1.0 0.583 0.0	1.0 0.552 0.0 66.4 34.9 73.1 81.0 64	1.0	1.0 0.583 0.0				
68	66	65	1.0 0.6 0.0	68.8 28.9 74.5 79.9 68	1.0	1.0 0.569 0.0 67.2 32.8 73.7 80.6 66	1.0	1.0 0.6 0.0	1.0 0.564 0.0 67.0 33.4 73.5 80.7 65	1.0	1.0 0.6 0.0				
70	67	66	1.0 0.616 0.0	69.6 26.8 74.8 79.5 70	1.0	1.0 0.58 0.0 67.8 31.4 74.0 80.4 67	1.0	1.0 0.617 0.0	1.0 0.577 0.0 67.6 31.8 73.9 80.5 66	1.0	1.0 0.617 0.0				
71	68	67	1.0 0.633 0.0	70.5 24.7 75.4 79.4 71	1.0	1.0 0.591 0.0 68.4 30.0 74.3 80.1 68	1.0	1.0 0.633 0.0	1.0 0.589 0.0 68.3 30.3 74.2 80.2 67	1.0	1.0 0.633 0.0				
73	69	68	1.0 0.65 0.0	71.5 22.7 76.2 79.5 73	1.0	1.0 0.602 0.0 69.0 28.6 74.6 79.9 69	1.0	1.0 0.65 0.0	1.0 0.602 0.0 68.9 28.7 74.5 79.9 68	1.0	1.0 0.65 0.0				
75	70	70	1.0 0.666 0.0	72.4 20.6 76.9 79.7 75	1.0	1.0 0.614 0.0 69.5 27.2 74.8 79.6 70	1.0	1.0 0.667 0.0	1.0 0.614 0.0 69.5 27.2 74.8 79.6 70	1.0	1.0 0.667 0.0				
76	71	71	1.0 0.683 0.0	73.4 18.5 77.6 79.8 76	1.0	1.0 0.625 0.0 70.1 25.8 75.0 79.4 71	1.0	1.0 0.683 0.0	1.0 0.626 0.0 70.2 25.6 75.1 79.4 71	1.0	1.0 0.683 0.0				
78	72	72	1.0 0.7 0.0	74.3 16.3 78.2 79.9 78	1.0	1.0 0.635 0.0 70.7 24.5 75.6 79.4 72	1.0	1.0 0.7 0.0	1.0 0.638 0.0 70.9 24.2 75.7 79.5 72	1.0	1.0 0.7 0.0				
79	73	73	1.0 0.716 0.0	75.3 14.2 78.8 80.1 79	1.0	1.0 0.646 0.0 71.3 23.3 76.1 79.5 73	1.0	1.0 0.717 0.0	1.0 0.65 0.0 71.5 22.8 76.2 79.6 73	1.0	1.0 0.717 0.0				
81	74	74	1.0 0.733 0.0	76.2 12.0 79.3 80.2 81	1.0	1.0 0.656 0.0 71.9 21.9 76.5 79.6 74	1.0	1.0 0.733 0.0	1.0 0.661 0.0 72.2 21.3 76.8 79.7 74	1.0	1.0 0.733 0.0				
82	75	75	1.0 0.75 0.0	77.2 9.8 79.7 80.4 82	1.0	1.0 0.667 0.0 72.5 20.6 77.0 79.7 75	1.0	1.0 0.75 0.0	1.0 0.673 0.0 72.8 19.8 77.3 79.8 75	1.0	1.0 0.75 0.0				

voir fichiers similaires: <http://130.149.60.45/~farbmetrik/RF52/RF52L0NA.TXT /.PS>
informations techniques: <http://www.ps.bam.de> ou <http://130.149.60.45/~farbmetrik>

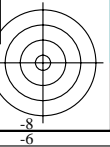
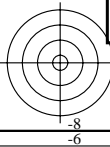
TUB enregistrement: 20130201 -RF52/RF52L0NA.TXT /.PS
application pour la mesure de sortie sur écran, aucune séparation
TUB matériel: code=rha4ta

Couleur maximale dans le système colorimétrique : sRGB standard device; no separation, D65 pour l'entrée et sortie; Six angles de teinte à 60 degrés couleurs standard RYGCMB_s; h_{ab,ds} = 30.0, 90.0, 150.0, 210.0, 270.0, 330.0; Six angles de teinte des couleurs périphériques RYGCMB_d; h_{ab,d} = 40.0, 102.9, 136.0, 196.4, 306.3, 328.2; Six angles de teinte des couleurs élémentaires RYGCMB_e; h_{ab,e} = 25.5, 92.3, 162.2, 217.0, 271.7, 328.6

Table with 18 columns: h_{ab,d}, h_{ab,s}, h_{ab,e}, r_{gb}^{ab}*, d_{s361}Mi, LAB^{ab}*, d_{sx361}Mi (x=LabCh), r_{gb}^{ab}*, d_{s361}Mi, LAB^{ab}*, d_{sx361}Mi (x=LabCh), r_{gb}^{ab}*, d_{s361}Mi, LAB^{ab}*, d_{sx361}Mi (x=LabCh), r_{gb}^{ab}*, d_{s361}Mi, LAB^{ab}*, d_{sx361}Mi (x=LabCh), r_{gb}^{ab}*, d_{s361}Mi, LAB^{ab}*, d_{sx361}Mi (x=LabCh). Rows 82-128.

TUB enregistrement: 20130201 -RF52/RF52L0NA.TXT /.PS TUB matériel: code=rh4ta application pour la mesure de sortie sur écran, aucune séparation

voir fichiers similaires: http://130.149.60.45/~farbmetrik/RF52/RF52.HTM informations techniques: http://www.ps.bam.de ou http://130.149.60.45/~farbmetrik



Couleur maximale dans le système colorimétrique : sRGB standard device; no separation, D65 pour l'entrée et sortie; Six angles de teinte à 60 degrés couleurs standard RYGCMB_s; h_{ab,ds} = 30.0, 90.0, 150.0, 210.0, 270.0, 330.0;

Six angles de teinte des couleurs périphériques RYGCMB_d: h_{ab,d} = 40.0, 102.9, 136.0, 196.4, 306.3, 328.2; Six angles de teinte des couleurs élémentaires RYGCMB_c: h_{ab,c} = 25.5, 92.3, 162.2, 217.0, 271.7, 328.6

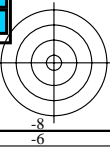
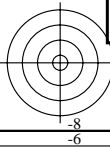
h _{ab,d}	h _{ab,s}	h _{ab,e}	rgb [*] dd361M	LAB [*] ddx361Mi (x=LabCh)	rgb [*] ds361Mi	LAB [*] dsx361Mi (x=LabCh)	rgb [*] dd361Mi	rgb [*] de361Mi	LAB [*] dex361Mi (x=LabCh)	rgb [*] dd361Mi	rgb [*] dd361Mi	rgb [*] dd361Mi	rgb [*] dd361Mi																						
128	120	127	0.5	1.0	0.0	85.7	-65.2	82.4	105.1	128	0.7	1.0	0.0	87.9	-49.1	85.3	98.4	120	0.5	1.0	0.0	0.529	1.0	0.0	86.0	-62.9	82.9	104.1	127	0.5	1.0	0.0			
128	121	128	0.483	1.0	0.0	85.5	-66.2	82.3	105.6	128	0.68	1.0	0.0	87.7	-50.9	84.9	99.1	121	0.483	1.0	0.0	0.498	1.0	0.0	85.7	-65.3	82.4	105.2	128	0.483	1.0	0.0			
129	122	129	0.466	1.0	0.0	85.4	-67.2	82.1	106.1	129	0.659	1.0	0.0	87.4	-52.8	84.6	99.7	122	0.467	1.0	0.0	0.456	1.0	0.0	85.4	-67.8	82.1	106.5	129	0.467	1.0	0.0			
129	123	130	0.45	1.0	0.0	85.3	-68.2	82.0	106.7	129	0.638	1.0	0.0	87.1	-54.6	84.2	100.4	123	0.45	1.0	0.0	0.414	1.0	0.0	85.1	-70.3	81.7	107.9	130	0.45	1.0	0.0			
130	124	131	0.433	1.0	0.0	85.2	-69.2	81.8	107.2	130	0.615	1.0	0.0	86.9	-56.5	83.9	101.1	124	0.433	1.0	0.0	0.372	1.0	0.0	84.7	-72.9	81.3	109.2	131	0.433	1.0	0.0			
130	125	133	0.416	1.0	0.0	85.0	-70.2	81.7	107.8	130	0.589	1.0	0.0	86.6	-58.4	83.6	102.1	125	0.417	1.0	0.0	0.309	1.0	0.0	84.4	-75.6	80.9	110.8	133	0.417	1.0	0.0			
131	126	134	0.4	1.0	0.0	84.9	-71.3	81.5	108.3	131	0.562	1.0	0.0	86.3	-60.4	83.3	103.0	126	0.4	1.0	0.0	0.244	1.0	0.0	84.1	-78.3	80.5	112.4	134	0.4	1.0	0.0			
131	127	135	0.383	1.0	0.0	84.8	-72.3	81.3	108.8	131	0.536	1.0	0.0	86.1	-62.4	83.0	103.9	127	0.383	1.0	0.0	0.132	1.0	0.0	83.8	-81.2	80.1	114.1	135	0.383	1.0	0.0			
132	128	136	0.366	1.0	0.0	84.7	-73.2	81.2	109.3	132	0.51	1.0	0.0	85.8	-64.4	82.6	104.8	128	0.367	1.0	0.0	0.0	1.0	0.073	83.7	-82.3	78.0	113.5	136	0.367	1.0	0.0			
132	129	137	0.35	1.0	0.0	84.6	-73.9	81.1	109.7	132	0.477	1.0	0.0	85.5	-66.5	82.3	105.8	129	0.35	1.0	0.0	0.0	1.0	0.165	83.7	-81.6	74.2	110.4	137	0.35	1.0	0.0			
132	130	138	0.333	1.0	0.0	84.5	-74.6	81.0	110.1	132	0.442	1.0	0.0	85.3	-68.7	82.0	107.0	130	0.333	1.0	0.0	0.0	1.0	0.227	83.8	-80.8	70.5	107.3	138	0.333	1.0	0.0			
132	131	140	0.316	1.0	0.0	84.4	-75.3	80.9	110.6	132	0.406	1.0	0.0	85.0	-70.9	81.6	108.1	131	0.317	1.0	0.0	0.0	1.0	0.273	83.8	-80.0	67.0	104.5	140	0.317	1.0	0.0			
133	132	141	0.3	1.0	0.0	84.3	-76.0	80.8	111.0	133	0.368	1.0	0.0	84.7	-73.1	81.2	109.3	132	0.3	1.0	0.0	0.0	1.0	0.311	83.9	-79.3	63.7	101.8	141	0.3	1.0	0.0			
133	133	142	0.283	1.0	0.0	84.2	-76.8	80.7	111.4	133	0.314	1.0	0.0	84.5	-75.4	80.9	110.7	133	0.283	1.0	0.0	0.0	1.0	0.349	84.0	-78.4	60.4	99.0	142	0.283	1.0	0.0			
133	134	143	0.266	1.0	0.0	84.2	-77.5	80.6	111.8	133	0.261	1.0	0.0	84.2	-77.7	80.6	112.0	134	0.267	1.0	0.0	0.0	1.0	0.383	84.0	-77.5	57.3	96.4	143	0.267	1.0	0.0			
134	135	144	0.25	1.0	0.0	84.1	-78.2	80.5	112.2	134	0.173	1.0	0.0	83.9	-80.2	80.3	113.5	135	0.25	1.0	0.0	0.0	1.0	0.41	84.1	-76.8	54.3	94.1	144	0.25	1.0	0.0			
134	136	145	0.233	1.0	0.0	84.0	-78.7	80.4	112.5	134	0.004	1.0	0.0	83.6	-82.6	79.9	115.0	136	0.233	1.0	0.0	0.0	1.0	0.437	84.2	-75.9	51.5	91.8	145	0.233	1.0	0.0			
134	137	147	0.216	1.0	0.0	84.0	-79.1	80.4	112.8	134	0.0	1.0	0.125	83.7	-82.1	76.6	112.3	137	0.217	1.0	0.0	0.0	1.0	0.464	84.2	-75.0	48.7	89.5	147	0.217	1.0	0.0			
134	138	148	0.2	1.0	0.0	83.9	-79.5	80.3	113.0	134	0.0	1.0	0.178	83.7	-81.4	73.4	109.7	138	0.2	1.0	0.0	0.0	1.0	0.491	84.3	-74.1	45.9	87.2	148	0.2	1.0	0.0			
134	139	149	0.183	1.0	0.0	83.9	-79.9	80.2	113.3	134	0.0	1.0	0.231	83.8	-80.7	70.3	107.1	139	0.183	1.0	0.0	0.0	1.0	0.513	84.4	-73.3	43.4	85.2	149	0.183	1.0	0.0			
135	140	150	0.166	1.0	0.0	83.8	-80.4	80.2	113.5	135	0.0	1.0	0.271	83.8	-80.1	67.3	104.7	140	0.167	1.0	0.0	0.0	1.0	0.533	84.5	-72.5	41.0	83.4	150	0.167	1.0	0.0			
135	141	151	0.15	1.0	0.0	83.8	-80.8	80.1	113.8	135	0.0	1.0	0.303	83.9	-79.4	64.4	102.3	141	0.15	1.0	0.0	0.0	1.0	0.553	84.5	-71.7	38.6	81.6	151	0.15	1.0	0.0			
135	142	152	0.133	1.0	0.0	83.7	-81.2	80.1	114.1	135	0.0	1.0	0.335	83.9	-78.7	61.6	100.0	142	0.133	1.0	0.0	0.0	1.0	0.573	84.6	-70.9	36.3	79.8	152	0.133	1.0	0.0			
135	143	154	0.116	1.0	0.0	83.7	-81.5	80.0	114.2	135	0.0	1.0	0.368	84.0	-77.9	58.8	97.7	143	0.117	1.0	0.0	0.0	1.0	0.593	84.7	-70.0	34.1	77.9	154	0.117	1.0	0.0			
135	144	155	0.1	1.0	0.0	83.7	-81.7	80.0	114.4	135	0.0	1.0	0.393	84.1	-77.3	56.2	95.6	144	0.1	1.0	0.0	0.0	1.0	0.614	84.7	-69.0	31.9	76.1	155	0.1	1.0	0.0			
135	145	156	0.083	1.0	0.0	83.7	-81.9	80.0	114.5	135	0.0	1.0	0.416	84.1	-76.6	53.7	93.6	145	0.083	1.0	0.0	0.0	1.0	0.631	84.8	-68.2	29.8	74.5	156	0.083	1.0	0.0			
135	146	157	0.066	1.0	0.0	83.7	-82.0	79.9	114.6	135	0.0	1.0	0.439	84.2	-75.9	51.3	91.7	146	0.067	1.0	0.0	0.0	1.0	0.646	84.9	-67.5	27.9	73.2	157	0.067	1.0	0.0			
135	147	158	0.049	1.0	0.0	83.6	-82.2	79.9	114.7	135	0.0	1.0	0.462	84.2	-75.1	48.8	89.7	147	0.05	1.0	0.0	0.0	1.0	0.661	85.0	-66.9	26.1	71.9	158	0.05	1.0	0.0			
135	148	159	0.033	1.0	0.0	83.6	-82.4	79.9	114.8	135	0.0	1.0	0.485	84.3	-74.3	46.5	87.7	148	0.033	1.0	0.0	0.0	1.0	0.676	85.0	-66.2	24.3	70.6	159	0.033	1.0	0.0			
135	149	161	0.016	1.0	0.0	83.6	-82.6	79.9	114.9	135	0.0	1.0	0.506	84.4	-73.5	44.2	85.9	149	0.017	1.0	0.0	0.0	1.0	0.691	85.1	-65.4	22.5	69.2	161	0.017	1.0	0.0			
136	150	162	0.0	1.0	0.0	83.6	-82.7	79.8	115.0	136	G _d	0.0	1.0	0.523	84.4	-72.9	42.1	84.3	150	G _s	0.0	1.0	0.0	0.0	1.0	0.706	85.2	-64.6	20.7	67.9	162	G _c	0.0	1.0	0.0
136	151	163	0.0	1.0	0.016	83.6	-82.7	79.4	114.6	136	0.0	1.0	0.541	84.5	-72.3	40.1	82.7	151	0.0	1.0	0.017	0.0	1.0	0.718	85.2	-63.9	19.4	66.9	163	0.0	1.0	0.017			
136	152	164	0.0	1.0	0.033	83.6	-82.6	79.0	114.3	136	0.0	1.0	0.558	84.5	-71.6	38.1	81.2	152	0.0	1.0	0.033	0.0	1.0	0.73	85.3	-63.2	18.1	65.9	164	0.0	1.0	0.033			
136	153	164	0.0	1.0	0.05	83.6	-82.5	78.5	113.9	136	0.0	1.0	0.575	84.6	-70.8	36.1	79.6	153	0.0	1.0	0.05	0.0	1.0	0.741	85.3	-62.5	16.8	64.8	164	0.0	1.0	0.05			
136	154	165	0.0	1.0	0.066	83.6	-82.4	78.1	113.5	136	0.0	1.0	0.592	84.7	-70.0	34.2	78.0	154	0.0	1.0	0.067	0.0	1.0	0.752	85.4	-61.9	15.6	63.9	165	0.0	1.0	0.067			
136	155	166	0.0	1.0	0.083	83.6	-82.3	77.6	113.2	136	0.0	1.0	0.61	84.7	-69.2	32.3	76.5	155	0.0	1.0	0.083	0.0	1.0	0.761	85.4	-61.5	14.5	63.2	166	0.0	1.0	0.083			
136	156	167	0.0	1.0	0.1	83.6	-82.2	77.2	112.8	136	0.0	1.0	0.626	84.8	-68.4	30.5	74.9	156	0.0	1.0	0.1	0.0	1.0	0.77	85.5	-61.1	13.3	62.6	167	0.0	1.0	0.1			
136	157	168	0.0	1.0	0.116	83.6	-82.1	76.8	112.5	136	0.0	1.0	0.639	84.9	-67.8	28.8	73.8	157	0.0	1.0	0.117	0.0	1.0	0.778	85.5	-60.6	12.2	61.9	168	0.0	1.0	0.117			
137	158	169	0.0	1.0	0.133	83.6	-82.0	76.0	111.9	137	0.0	1.0	0.652	84.9	-67.3	27.2	72.7	158	0.0	1.0	0.133	0.0	1.0	0.787	85.6	-60.2	11.1	61.3	169	0.0	1.0	0.133			
137	159	170	0.0	1.0	0.15	83.7	-81.8	75.0	111.0	137	0.0	1.0	0.665	85.0	-66.7	25.6	71.6	159	0.0	1.0	0.15	0.0	1.0	0.795	85.6										

Couleur maximale dans le système colorimétrique : sRGB standard device; no separation, D65 pour l'entrée et sortie; Six angles de teinte à 60 degrés couleurs standard RYGCBM_s; h_{ab,ds} = 30.0, 90.0, 150.0, 210.0, 270.0, 330.0;
Six angles de teinte des couleurs périphériques RYGCBM_d; h_{ab,d} = 40.0, 102.9, 136.0, 196.4, 306.3, 328.2; Six angles de teinte des couleurs élémentaires RYGCBM_c; h_{ab,c} = 25.5, 92.3, 162.2, 217.0, 271.7, 328.6

h _{ab,d}	h _{ab,s}	h _{ab,e}	rgb ^{ab} * dd361M	LAB ^{ab} * ddx361Mi (x=LabCh)	rgb ^{ab} * ds361Mi	LAB ^{ab} * dsx361Mi (x=LabCh)	rgb ^{ab} * de361Mi	LAB ^{ab} * dex361Mi (x=LabCh)	rgb ^{ab} * dd361Mi	LAB ^{ab} * ddx361Mi (x=LabCh)	rgb ^{ab} * de361Mi	LAB ^{ab} * dex361Mi (x=LabCh)	rgb ^{ab} * dd361Mi	LAB ^{ab} * ddx361Mi (x=LabCh)	rgb ^{ab} * ds361Mi	LAB ^{ab} * dsx361Mi (x=LabCh)	rgb ^{ab} * de361Mi	LAB ^{ab} * dex361Mi (x=LabCh)	
196	210	216	0.0	1.0	1.0	86.8	-46.1	-13.5	48.1	196	0.0	0.922	1.0	81.3	-38.6	-22.2	44.7	210	C _s
199	211	217	0.0	0.983	1.0	85.6	-44.6	-15.8	47.3	199	0.0	0.983	1.0	81.3	-38.0	-22.8	44.4	211	
202	212	218	0.0	0.966	1.0	84.5	-42.9	-17.9	46.5	202	0.0	0.967	1.0	81.0	-37.3	-23.3	44.2	212	
205	213	219	0.0	0.95	1.0	83.3	-41.1	-19.8	45.7	205	0.0	0.911	1.0	80.6	-36.7	-23.8	43.9	213	
208	214	220	0.0	0.933	1.0	82.1	-39.3	-21.7	44.9	208	0.0	0.906	1.0	80.2	-36.1	-24.3	43.6	214	
212	215	221	0.0	0.916	1.0	80.9	-37.4	-23.4	44.1	212	0.0	0.901	1.0	79.8	-35.4	-24.8	43.4	215	
215	216	222	0.0	0.9	1.0	79.7	-35.4	-24.9	43.3	215	0.0	0.895	1.0	79.5	-34.8	-25.3	43.1	216	
218	217	223	0.0	0.883	1.0	78.5	-33.4	-26.3	42.5	218	0.0	0.89	1.0	79.1	-34.1	-25.7	42.9	217	
221	218	224	0.0	0.866	1.0	77.4	-31.5	-28.1	42.2	221	0.0	0.885	1.0	78.7	-33.5	-26.1	42.6	218	
225	219	225	0.0	0.85	1.0	76.2	-29.9	-30.2	42.5	225	0.0	0.879	1.0	78.3	-32.8	-26.6	42.4	219	
228	220	226	0.0	0.833	1.0	75.0	-28.1	-32.3	42.8	228	0.0	0.874	1.0	77.9	-32.2	-27.0	42.2	220	
232	221	227	0.0	0.816	1.0	73.8	-26.1	-34.2	43.1	232	0.0	0.87	1.0	77.6	-31.8	-27.6	42.2	221	
236	222	227	0.0	0.8	1.0	72.6	-24.0	-36.0	43.3	236	0.0	0.865	1.0	77.3	-31.3	-28.2	42.3	222	
239	223	228	0.0	0.783	1.0	71.4	-21.8	-37.7	43.6	239	0.0	0.861	1.0	77.0	-30.9	-28.8	42.4	223	
243	224	229	0.0	0.766	1.0	70.2	-19.5	-39.3	43.9	243	0.0	0.856	1.0	76.7	-30.4	-29.4	42.5	224	
247	225	230	0.0	0.75	1.0	69.1	-17.0	-40.7	44.1	247	0.0	0.851	1.0	76.3	-30.0	-30.0	42.5	225	
250	226	231	0.0	0.733	1.0	67.9	-15.3	-42.9	45.5	250	0.0	0.847	1.0	76.0	-29.5	-30.6	42.6	226	
253	227	232	0.0	0.716	1.0	66.7	-13.5	-44.9	46.9	253	0.0	0.842	1.0	75.7	-29.0	-31.1	42.7	227	
256	228	233	0.0	0.7	1.0	65.5	-11.4	-46.9	48.3	256	0.0	0.838	1.0	75.4	-28.5	-31.7	42.8	228	
259	229	234	0.0	0.683	1.0	64.4	-9.2	-48.8	49.7	259	0.0	0.833	1.0	75.0	-28.0	-32.2	42.8	229	
262	230	235	0.0	0.666	1.0	63.2	-6.8	-50.6	51.1	262	0.0	0.829	1.0	74.7	-27.5	-32.8	42.9	230	
265	231	236	0.0	0.65	1.0	62.0	-4.2	-52.3	52.5	265	0.0	0.824	1.0	74.4	-26.9	-33.3	43.0	231	
268	232	237	0.0	0.633	1.0	60.9	-1.5	-53.9	53.9	268	0.0	0.82	1.0	74.1	-26.4	-33.8	43.1	232	
270	233	237	0.0	0.616	1.0	59.7	0.8	-55.6	55.7	270	0.0	0.815	1.0	73.7	-25.9	-34.3	43.1	233	
272	234	238	0.0	0.6	1.0	58.6	2.9	-57.7	57.8	272	0.0	0.81	1.0	73.4	-25.3	-34.9	43.2	234	
274	235	239	0.0	0.583	1.0	57.4	5.1	-59.7	59.9	274	0.0	0.806	1.0	73.1	-24.7	-35.4	43.3	235	
276	236	240	0.0	0.566	1.0	56.3	7.4	-61.6	62.1	276	0.0	0.801	1.0	72.8	-24.1	-35.8	43.4	236	
278	237	241	0.0	0.55	1.0	55.2	10.0	-63.5	64.2	278	0.0	0.797	1.0	72.4	-23.6	-36.3	43.4	237	
280	238	242	0.0	0.533	1.0	54.0	12.6	-65.2	66.4	280	0.0	0.792	1.0	72.1	-23.0	-36.8	43.5	238	
283	239	243	0.0	0.516	1.0	52.9	15.4	-66.8	68.5	283	0.0	0.788	1.0	71.8	-22.3	-37.2	43.6	239	
285	240	244	0.0	0.5	1.0	51.7	18.3	-68.3	70.7	285	0.0	0.783	1.0	71.5	-21.7	-37.7	43.6	240	
286	241	245	0.0	0.483	1.0	50.7	20.6	-70.2	73.2	286	0.0	0.779	1.0	71.1	-21.1	-38.1	43.7	241	
287	242	246	0.0	0.466	1.0	49.6	22.9	-72.1	75.7	287	0.0	0.774	1.0	70.8	-20.5	-38.6	43.8	242	
288	243	247	0.0	0.45	1.0	48.6	25.4	-74.0	78.2	288	0.0	0.769	1.0	70.5	-19.8	-39.0	43.9	243	
290	244	248	0.0	0.433	1.0	47.5	28.0	-75.7	80.7	290	0.0	0.765	1.0	70.2	-19.2	-39.4	43.9	244	
291	245	248	0.0	0.416	1.0	46.5	30.6	-77.4	83.2	291	0.0	0.76	1.0	69.8	-18.5	-39.8	44.0	245	
292	246	249	0.0	0.4	1.0	45.4	33.3	-79.0	85.7	292	0.0	0.756	1.0	69.5	-17.8	-40.2	44.1	246	
294	247	250	0.0	0.383	1.0	44.3	36.2	-80.5	88.2	294	0.0	0.751	1.0	69.2	-17.2	-40.6	44.2	247	
295	248	251	0.0	0.366	1.0	43.4	38.7	-82.0	90.7	295	0.0	0.746	1.0	68.8	-16.6	-41.2	44.5	248	
296	249	252	0.0	0.35	1.0	42.5	41.0	-83.6	93.2	296	0.0	0.74	1.0	68.4	-16.0	-41.9	45.0	249	
296	250	253	0.0	0.333	1.0	41.6	43.4	-85.2	95.6	296	0.0	0.735	1.0	68.0	-15.4	-42.6	45.5	250	
297	251	254	0.0	0.316	1.0	40.7	45.8	-86.7	98.1	297	0.0	0.729	1.0	67.7	-14.8	-43.3	45.9	251	
298	252	255	0.0	0.3	1.0	39.8	48.2	-88.2	100.5	298	0.0	0.724	1.0	67.3	-14.2	-44.0	46.4	252	
299	253	256	0.0	0.283	1.0	38.9	50.7	-89.6	103.0	299	0.0	0.718	1.0	66.9	-13.6	-44.7	46.8	253	
300	254	257	0.0	0.266	1.0	38.0	53.3	-91.0	105.4	300	0.0	0.713	1.0	66.5	-12.9	-45.4	47.3	254	
301	255	258	0.0	0.25	1.0	37.1	55.9	-92.3	107.9	301	0.0	0.707	1.0	66.1	-12.3	-46.0	47.8	255	

voir fichiers similaires: <http://130.149.60.45/~farbmetrik/RF52/RF52L0NA.TXT /.PS>
informations techniques: <http://www.ps.bam.de> ou <http://130.149.60.45/~farbmetrik>

TUB enregistrement: 20130201 -RF52/RF52L0NA.TXT /.PS
application pour la mesure de sortie sur écran, aucune séparation
TUB matériel: code=rha4ta



Couleur maximale dans le système colorimétrique : sRGB standard device; no separation, D65 pour l'entrée et sortie; Six angles de teinte à 60 degrés couleurs standard *RYGCBM_s*; *h_{ab,ds}* = 30.0, 90.0, 150.0, 210.0, 270.0, 330.0;
Six angles de teinte des couleurs périphériques *RYGCBM_d*; *h_{ab,d}* = 40.0, 102.9, 136.0, 196.4, 306.3, 328.2; Six angles de teinte des couleurs élémentaires *RYGCBM_e*; *h_{ab,e}* = 25.5, 92.3, 162.2, 217.0, 271.7, 328.6

<i>h_{ab,d}</i>	<i>h_{ab,s}</i>	<i>h_{ab,e}</i>	<i>rgb[*]_{dd361M}</i>	<i>LAB[*]_{ddx361Mi}</i> (x=LabCh)	<i>rgb[*]_{ds361Mi}</i>	<i>LAB[*]_{dsx361Mi}</i> (x=LabCh)	<i>rgb[*]_{de361Mi}</i>	<i>LAB[*]_{dex361Mi}</i> (x=LabCh)	<i>rgb[*]_{dd361Mi}</i>	<i>LAB[*]_{dd361Mi}</i>	<i>rgb[*]_{de361Mi}</i>	<i>LAB[*]_{dex361Mi}</i> (x=LabCh)	<i>rgb[*]_{dd361Mi}</i>	<i>LAB[*]_{dd361Mi}</i>	<i>rgb[*]_{de361Mi}</i>	<i>LAB[*]_{dex361Mi}</i> (x=LabCh)	<i>rgb[*]_{dd361Mi}</i>	<i>LAB[*]_{dd361Mi}</i>	<i>rgb[*]_{de361Mi}</i>	<i>LAB[*]_{dex361Mi}</i> (x=LabCh)											
301	255	258	0.0	0.25 1.0	37.1	55.9	-92.3	107.9	301	0.0	0.707	1.0	66.1	-12.3	-46.0	47.8	255	0.0	0.25	1.0	0.0	0.69	1.0	64.9	-10.1	-48.0	49.2	258	0.0	0.25	1.0
301	256	258	0.0	0.233 1.0	36.5	57.6	-93.4	109.7	301	0.0	0.702	1.0	65.7	-11.6	-46.7	48.2	256	0.0	0.233	1.0	0.0	0.685	1.0	64.6	-9.4	-48.6	49.6	258	0.0	0.233	1.0
302	257	259	0.0	0.216 1.0	35.9	59.4	-94.5	111.6	302	0.0	0.696	1.0	65.3	-10.9	-47.3	48.7	257	0.0	0.217	1.0	0.0	0.68	1.0	64.2	-8.7	-49.1	50.0	259	0.0	0.217	1.0
302	258	260	0.0	0.2 1.0	35.2	61.2	-95.5	113.5	302	0.0	0.691	1.0	64.9	-10.1	-48.0	49.1	258	0.0	0.2	1.0	0.0	0.675	1.0	63.8	-8.0	-49.7	50.4	260	0.0	0.2	1.0
303	259	261	0.0	0.183 1.0	34.6	63.0	-96.6	115.3	303	0.0	0.685	1.0	64.5	-9.4	-48.6	49.6	259	0.0	0.183	1.0	0.0	0.67	1.0	63.5	-7.2	-50.2	50.9	261	0.0	0.183	1.0
303	260	262	0.0	0.166 1.0	34.0	64.8	-97.6	117.2	303	0.0	0.679	1.0	64.2	-8.6	-49.2	50.1	260	0.0	0.167	1.0	0.0	0.665	1.0	63.1	-6.5	-50.8	51.3	262	0.0	0.167	1.0
304	261	263	0.0	0.15 1.0	33.4	66.7	-98.6	119.1	304	0.0	0.674	1.0	63.8	-7.8	-49.8	50.5	261	0.0	0.15	1.0	0.0	0.66	1.0	62.8	-5.7	-51.3	51.7	263	0.0	0.15	1.0
304	262	264	0.0	0.133 1.0	32.8	68.6	-99.6	120.9	304	0.0	0.668	1.0	63.4	-7.0	-50.4	51.0	262	0.0	0.133	1.0	0.0	0.655	1.0	62.4	-5.0	-51.8	52.1	264	0.0	0.133	1.0
304	263	265	0.0	0.116 1.0	32.3	70.0	-100.3	122.3	304	0.0	0.663	1.0	63.0	-6.2	-51.0	51.5	263	0.0	0.117	1.0	0.0	0.65	1.0	62.1	-4.2	-52.3	52.5	265	0.0	0.117	1.0
305	264	266	0.0	0.1 1.0	32.0	70.8	-100.8	123.2	305	0.0	0.657	1.0	62.6	-5.3	-51.5	51.9	264	0.0	0.1	1.0	0.0	0.645	1.0	61.7	-3.4	-52.8	53.0	266	0.0	0.1	1.0
305	265	267	0.0	0.083 1.0	31.7	71.7	-101.2	124.1	305	0.0	0.652	1.0	62.2	-4.5	-52.1	52.4	265	0.0	0.083	1.0	0.0	0.64	1.0	61.4	-2.5	-53.2	53.4	267	0.0	0.083	1.0
305	266	268	0.0	0.066 1.0	31.5	72.5	-101.7	124.9	305	0.0	0.646	1.0	61.8	-3.6	-52.6	52.8	266	0.0	0.067	1.0	0.0	0.635	1.0	61.0	-1.7	-53.7	53.8	268	0.0	0.067	1.0
305	267	269	0.0	0.049 1.0	31.2	73.4	-102.2	125.8	305	0.0	0.641	1.0	61.4	-2.7	-53.1	53.3	267	0.0	0.05	1.0	0.0	0.63	1.0	60.6	-0.8	-54.1	54.2	269	0.0	0.05	1.0
305	268	269	0.0	0.033 1.0	30.9	74.3	-102.6	126.7	305	0.0	0.635	1.0	61.0	-1.8	-53.6	53.8	268	0.0	0.033	1.0	0.0	0.624	1.0	60.3	0.0	-54.6	54.7	269	0.0	0.033	1.0
306	269	270	0.0	0.016 1.0	30.6	75.1	-103.1	127.6	306	0.0	0.63	1.0	60.6	-0.8	-54.1	54.2	269	0.0	0.017	1.0	0.0	0.617	1.0	59.8	0.8	-55.6	55.7	270	0.0	0.017	1.0
306	270	271	0.0	0.0 1.0	30.3	76.0	-103.5	128.5	306	0.0	0.624	1.0	60.2	0.0	-54.7	54.8	270	0.0	0.0	1.0	0.0	0.609	1.0	59.3	1.7	-56.5	56.6	271	0.0	0.0	1.0
306	271	272	0.016	0.0 1.0	30.4	76.0	-103.4	128.4	306	0.0	0.615	1.0	59.7	1.0	-55.7	55.9	271	0.0	0.017	0.0 1.0	0.0	0.602	1.0	58.7	2.7	-57.5	57.6	272	0.0	0.017	0.0 1.0
306	272	273	0.033	0.0 1.0	30.5	76.1	-103.3	128.3	306	0.0	0.607	1.0	59.1	2.0	-56.8	56.9	272	0.033	0.0 1.0	0.0	0.594	1.0	58.2	3.7	-58.4	58.6	273	0.033	0.0 1.0	0.0	
306	273	274	0.05	0.0 1.0	30.6	76.1	-103.1	128.2	306	0.0	0.599	1.0	58.5	3.0	-57.8	58.0	273	0.05	0.0 1.0	0.0	0.586	1.0	57.7	4.8	-59.4	59.7	274	0.05	0.0 1.0	0.0	
306	274	275	0.066	0.0 1.0	30.7	76.1	-103.0	128.1	306	0.0	0.591	1.0	58.0	4.1	-58.8	59.0	274	0.067	0.0 1.0	0.0	0.578	1.0	57.1	5.8	-60.3	60.7	275	0.067	0.0 1.0	0.0	
306	275	276	0.083	0.0 1.0	30.8	76.2	-102.8	128.0	306	0.0	0.583	1.0	57.4	5.2	-59.8	60.1	275	0.083	0.0 1.0	0.0	0.57	1.0	56.6	7.0	-61.2	61.7	276	0.083	0.0 1.0	0.0	
306	276	277	0.1	0.0 1.0	30.9	76.2	-102.7	127.9	306	0.0	0.574	1.0	56.9	6.4	-60.7	61.2	276	0.1	0.0 1.0	0.0	0.563	1.0	56.1	8.1	-62.0	62.7	277	0.1	0.0 1.0	0.0	
306	277	278	0.116	0.0 1.0	30.9	76.2	-102.5	127.8	306	0.0	0.566	1.0	56.3	7.6	-61.7	62.2	277	0.117	0.0 1.0	0.0	0.555	1.0	55.5	9.3	-62.9	63.7	278	0.117	0.0 1.0	0.0	
306	278	279	0.133	0.0 1.0	31.1	76.3	-102.3	127.6	306	0.0	0.558	1.0	55.7	8.8	-62.6	63.3	278	0.133	0.0 1.0	0.0	0.547	1.0	55.0	10.5	-63.7	64.7	279	0.133	0.0 1.0	0.0	
306	279	280	0.15	0.0 1.0	31.3	76.3	-101.9	127.4	306	0.0	0.55	1.0	55.2	10.1	-63.5	64.3	279	0.15	0.0 1.0	0.0	0.539	1.0	54.5	11.7	-64.5	65.7	280	0.15	0.0 1.0	0.0	
306	280	281	0.166	0.0 1.0	31.5	76.4	-101.6	127.1	306	0.0	0.541	1.0	54.6	11.4	-64.3	65.4	280	0.167	0.0 1.0	0.0	0.531	1.0	53.9	13.0	-65.3	66.7	281	0.167	0.0 1.0	0.0	
307	281	282	0.183	0.0 1.0	31.7	76.5	-101.2	126.9	307	0.0	0.533	1.0	54.1	12.7	-65.1	66.5	281	0.183	0.0 1.0	0.0	0.524	1.0	53.4	14.3	-66.1	67.7	282	0.183	0.0 1.0	0.0	
307	282	283	0.2	0.0 1.0	31.9	76.6	-100.9	126.7	307	0.0	0.525	1.0	53.5	14.0	-66.0	67.5	282	0.2	0.0 1.0	0.0	0.516	1.0	52.9	15.6	-66.8	68.7	283	0.2	0.0 1.0	0.0	
307	283	284	0.216	0.0 1.0	32.1	76.6	-100.5	126.4	307	0.0	0.517	1.0	52.9	15.4	-66.7	68.6	283	0.217	0.0 1.0	0.0	0.508	1.0	52.3	16.9	-67.5	69.7	284	0.217	0.0 1.0	0.0	
307	284	285	0.233	0.0 1.0	32.3	76.7	-100.1	126.2	307	0.0	0.508	1.0	52.4	16.9	-67.5	69.7	284	0.233	0.0 1.0	0.0	0.5	1.0	51.8	18.3	-68.2	70.7	285	0.233	0.0 1.0	0.0	
307	285	285	0.25	0.0 1.0	32.6	76.8	-99.8	125.9	307	0.0	0.5	1.0	51.8	18.3	-68.2	70.7	285	0.25	0.0 1.0	0.0	0.488	1.0	51.0	19.9	-69.6	72.5	285	0.25	0.0 1.0	0.0	
307	286	286	0.266	0.0 1.0	32.9	77.0	-99.2	125.6	307	0.0	0.488	1.0	51.0	20.0	-69.7	72.6	286	0.267	0.0 1.0	0.0	0.476	1.0	50.3	21.6	-71.0	74.3	286	0.267	0.0 1.0	0.0	
308	287	287	0.283	0.0 1.0	33.2	77.1	-98.6	125.2	308	0.0	0.475	1.0	50.2	21.8	-71.2	74.5	287	0.283	0.0 1.0	0.0	0.464	1.0	49.5	23.3	-72.4	76.1	287	0.283	0.0 1.0	0.0	
308	288	288	0.3	0.0 1.0	33.6	77.3	-98.1	124.9	308	0.0	0.462	1.0	49.4	23.6	-72.6	76.4	288	0.3	0.0 1.0	0.0	0.452	1.0	48.8	25.1	-73.7	77.9	288	0.3	0.0 1.0	0.0	
308	289	289	0.316	0.0 1.0	33.9	77.4	-97.5	124.5	308	0.0	0.45	1.0	48.6	25.5	-74.0	78.3	289	0.317	0.0 1.0	0.0	0.44	1.0	48.0	26.9	-75.0	79.8	289	0.317	0.0 1.0	0.0	
308	290	290	0.333	0.0 1.0	34.3	77.6	-96.9	124.1	308	0.0	0.437	1.0	47.8	27.4	-75.3	80.2	290	0.333	0.0 1.0	0.0	0.428	1.0	47.2	28.8	-76.2	81.6	290	0.333	0.0 1.0	0.0	
308	291	291	0.35	0.0 1.0	34.9	77.7	-96.3	123.8	308	0.0	0.424	1.0	47.0	29.4	-76.6	82.1	291	0.35	0.0 1.0	0.0	0.416	1.0	46.5	30.7	-77.4	83.4	291	0.35	0.0 1.0	0.0	
309	292	292	0.366	0.0 1.0	34.6	77.9	-95.7	123.4	309	0.0	0.412	1.0	46.2	31.5	-77.8	84.1	292	0.367	0.0 1.0	0.0	0.404	1.0	45.7	32.7	-78.5	85.2	292	0.367	0.0 1.0	0.0	
309	293	293	0.383	0.0 1.0	35.3	78.1	-95.1	123.0	309	0.0	0.399	1.0	45.4	33.6	-79.0	86.0	293	0.383	0.0 1.0	0.0	0.392	1.0	44.9	34.7	-79.7	87.0	293	0.383	0.0 1.0	0.0	
309	294	294	0.4	0.0 1.0	35.8	78.3	-94.3	122.6	309	0.0	0.386	1.0	44.6	35.7	-80.2	87.9	294	0.4	0.0 1.0	0.0	0.38										

Couleur maximale dans le système colorimétrique : sRGB standard device; no separation, D65 pour l'entrée et sortie; Six angles de teinte à 60 degrés couleurs standard RYGCMB_s; h_{ab,ds} = 30.0, 90.0, 150.0, 210.0, 270.0, 330.0;
Six angles de teinte des couleurs périphériques RYGCMB_d; h_{ab,d} = 40.0, 102.9, 136.0, 196.4, 306.3, 328.2; Six angles de teinte des couleurs élémentaires RYGCMB_e; h_{ab,e} = 25.5, 92.3, 162.2, 217.0, 271.7, 328.6

h _{ab,d}	h _{ab,s}	h _{ab,e}	rgb [*] _{dd361M}	LAB [*] _{dx361Mi (x=LabCh)}	rgb [*] _{ds361Mi}	LAB [*] _{dsx361Mi (x=LabCh)}	rgb [*] _{dd361Mi}	LAB [*] _{de361Mi}	rgb [*] _{dex361Mi (x=LabCh)}	rgb [*] _{dd361Mi}																									
311	300	300	0.5	0.0	1.0	38.5	79.8	-89.7	120.0	311	0.0	0.274	1.0	38.4	52.2	-90.4	104.5	300	0.5	0.0	1.0	0.0	0.27	1.0	38.2	52.8	-90.6	105.0	300	0.5	0.0	1.0			
312	301	301	0.516	0.0	1.0	39.1	80.2	-88.7	119.6	312	0.0	0.254	1.0	37.4	55.3	-91.9	107.4	301	0.517	0.0	1.0	0.0	0.251	1.0	37.2	55.7	-92.1	107.7	301	0.517	0.0	1.0			
312	302	302	0.533	0.0	1.0	39.6	80.6	-87.8	119.2	312	0.0	0.222	1.0	36.1	58.8	-94.1	111.0	302	0.533	0.0	1.0	0.0	0.22	1.0	36.0	59.1	-94.2	111.3	302	0.533	0.0	1.0			
312	303	303	0.55	0.0	1.0	40.2	80.9	-86.9	118.8	312	0.0	0.188	1.0	34.8	62.6	-96.3	114.9	303	0.55	0.0	1.0	0.0	0.187	1.0	34.8	62.6	-96.3	115.0	303	0.55	0.0	1.0			
313	304	304	0.566	0.0	1.0	40.7	81.3	-86.0	118.3	313	0.0	0.153	1.0	33.5	66.4	-98.4	118.8	304	0.567	0.0	1.0	0.0	0.154	1.0	33.6	66.3	-98.3	118.6	304	0.567	0.0	1.0			
313	305	305	0.583	0.0	1.0	41.3	81.6	-85.1	117.9	313	0.0	0.109	1.0	32.2	70.4	-100.4	122.7	305	0.583	0.0	1.0	0.0	0.117	1.0	32.4	70.0	-100.2	122.3	304	0.583	0.0	1.0			
314	306	305	0.6	0.0	1.0	41.8	82.0	-84.1	117.5	314	0.0	0.024	1.0	30.8	74.8	-102.8	127.2	306	0.6	0.0	1.0	0.0	0.036	1.0	31.0	74.2	-102.5	126.6	305	0.6	0.0	1.0			
314	307	306	0.616	0.0	1.0	42.4	82.3	-83.2	117.0	314	0.172	0.0	1.0	31.6	76.5	-101.4	127.1	307	0.617	0.0	1.0	0.146	0.0	1.0	31.3	76.4	-102.0	127.5	306	0.617	0.0	1.0			
315	308	307	0.633	0.0	1.0	43.0	82.7	-82.2	116.6	315	0.287	0.0	1.0	33.2	77.2	-98.6	125.3	308	0.633	0.0	1.0	0.263	0.0	1.0	32.9	77.0	-99.3	125.7	307	0.633	0.0	1.0			
315	309	308	0.65	0.0	1.0	43.6	83.2	-81.2	116.3	315	0.357	0.0	1.0	34.8	77.8	-96.0	123.7	309	0.65	0.0	1.0	0.335	0.0	1.0	34.3	77.6	-96.8	124.2	308	0.65	0.0	1.0			
316	310	309	0.666	0.0	1.0	44.2	83.7	-80.2	115.9	316	0.414	0.0	1.0	36.2	78.6	-93.6	122.3	310	0.667	0.0	1.0	0.396	0.0	1.0	35.8	78.3	-94.4	122.8	309	0.667	0.0	1.0			
316	311	310	0.683	0.0	1.0	44.8	84.1	-79.2	115.5	316	0.465	0.0	1.0	37.6	79.4	-91.2	121.0	311	0.683	0.0	1.0	0.445	0.0	1.0	37.1	79.1	-92.2	121.5	310	0.683	0.0	1.0			
317	312	311	0.7	0.0	1.0	45.4	84.6	-78.1	115.2	317	0.513	0.0	1.0	39.0	80.1	-88.9	119.8	312	0.7	0.0	1.0	0.493	0.0	1.0	38.4	79.8	-89.9	120.3	311	0.7	0.0	1.0			
317	313	312	0.716	0.0	1.0	46.0	85.0	-77.1	114.8	317	0.551	0.0	1.0	40.3	81.0	-86.8	118.8	313	0.717	0.0	1.0	0.532	0.0	1.0	39.6	80.6	-87.9	119.3	312	0.717	0.0	1.0			
318	314	313	0.733	0.0	1.0	46.6	85.4	-76.1	114.4	318	0.59	0.0	1.0	41.6	81.8	-84.6	117.8	314	0.733	0.0	1.0	0.569	0.0	1.0	40.8	81.4	-85.8	118.3	313	0.733	0.0	1.0			
318	315	314	0.75	0.0	1.0	47.2	85.8	-75.1	114.0	318	0.628	0.0	1.0	42.8	82.6	-82.5	116.8	315	0.75	0.0	1.0	0.605	0.0	1.0	42.1	82.1	-83.8	117.4	314	0.75	0.0	1.0			
319	316	315	0.766	0.0	1.0	47.9	86.4	-74.0	113.8	319	0.66	0.0	1.0	44.0	83.5	-80.6	116.1	316	0.767	0.0	1.0	0.639	0.0	1.0	43.2	82.9	-81.8	116.6	315	0.767	0.0	1.0			
320	317	316	0.783	0.0	1.0	48.5	87.0	-72.9	113.5	320	0.692	0.0	1.0	45.2	84.4	-78.6	115.4	317	0.783	0.0	1.0	0.669	0.0	1.0	44.3	83.8	-80.0	115.9	316	0.783	0.0	1.0			
320	318	317	0.8	0.0	1.0	49.2	87.5	-71.8	113.2	320	0.724	0.0	1.0	46.3	85.2	-76.6	114.7	318	0.8	0.0	1.0	0.699	0.0	1.0	45.4	84.6	-78.1	115.2	317	0.8	0.0	1.0			
321	319	318	0.816	0.0	1.0	49.8	88.1	-70.7	113.0	321	0.755	0.0	1.0	47.5	86.0	-74.7	114.0	319	0.817	0.0	1.0	0.729	0.0	1.0	46.5	85.4	-76.3	114.5	318	0.817	0.0	1.0			
321	320	319	0.833	0.0	1.0	50.5	88.6	-69.6	112.7	321	0.783	0.0	1.0	48.6	87.0	-72.9	113.6	320	0.833	0.0	1.0	0.758	0.0	1.0	47.6	86.2	-74.5	114.0	319	0.833	0.0	1.0			
322	321	320	0.85	0.0	1.0	51.2	89.1	-68.5	112.4	322	0.81	0.0	1.0	49.7	87.9	-71.1	113.1	321	0.85	0.0	1.0	0.785	0.0	1.0	48.6	87.1	-72.8	113.5	320	0.85	0.0	1.0			
323	322	321	0.866	0.0	1.0	51.8	89.6	-67.4	112.1	323	0.838	0.0	1.0	50.7	88.8	-69.3	112.7	322	0.867	0.0	1.0	0.811	0.0	1.0	49.7	87.9	-71.0	113.1	321	0.867	0.0	1.0			
323	323	321	0.883	0.0	1.0	52.5	90.1	-66.3	111.9	323	0.866	0.0	1.0	51.8	89.6	-67.4	112.2	323	0.883	0.0	1.0	0.837	0.0	1.0	50.7	88.8	-69.3	112.7	321	0.883	0.0	1.0			
324	324	322	0.9	0.0	1.0	53.2	90.8	-65.2	111.8	324	0.892	0.0	1.0	52.9	90.5	-65.7	111.9	324	0.9	0.0	1.0	0.864	0.0	1.0	51.7	89.5	-67.6	112.2	322	0.9	0.0	1.0			
324	325	323	0.916	0.0	1.0	53.8	91.4	-64.1	111.6	324	0.918	0.0	1.0	53.9	91.5	-64.0	111.7	325	0.917	0.0	1.0	0.889	0.0	1.0	52.8	90.4	-65.9	111.9	323	0.917	0.0	1.0			
325	326	324	0.933	0.0	1.0	54.5	92.0	-62.9	111.5	325	0.943	0.0	1.0	55.0	92.4	-62.2	111.5	326	0.933	0.0	1.0	0.913	0.0	1.0	53.7	91.3	-64.3	111.7	324	0.933	0.0	1.0			
326	327	325	0.95	0.0	1.0	55.2	92.6	-61.8	111.4	326	0.969	0.0	1.0	56.0	93.3	-60.5	111.3	327	0.95	0.0	1.0	0.937	0.0	1.0	54.7	92.2	-62.6	111.5	325	0.95	0.0	1.0			
326	328	326	0.966	0.0	1.0	55.9	93.2	-60.7	111.2	326	0.994	0.0	1.0	57.1	94.2	-58.7	111.0	328	0.967	0.0	1.0	0.961	0.0	1.0	55.7	93.1	-61.0	111.3	326	0.967	0.0	1.0			
327	329	327	0.983	0.0	1.0	56.6	93.8	-59.5	111.1	327	1.0	0.0	1.0	0.984	57.1	93.9	-56.4	109.6	329	0.983	0.0	1.0	0.985	0.0	1.0	56.7	93.9	-59.3	111.1	327	0.983	0.0	1.0		
328	330	328	1.0	0.0	1.0	57.2	94.3	-58.4	110.9	328	M _d	1.0	0.0	0.962	56.8	93.4	-53.8	107.8	330	M _s	1.0	0.0	1.0	1.0	0.0	0.992	57.2	94.2	-57.4	110.3	328	M _e	1.0	0.0	1.0
329	331	329	1.0	0.0	0.983	57.0	93.9	-56.4	109.5	329	1.0	0.0	0.941	56.5	92.7	-51.3	106.0	331	1.0	0.0	0.983	1.0	0.0	0.972	56.9	93.6	-54.9	108.6	329	1.0	0.0	0.983			
329	332	330	1.0	0.0	0.966	56.8	93.4	-54.4	108.1	329	1.0	0.0	0.919	56.2	92.0	-48.8	104.2	332	1.0	0.0	0.967	1.0	0.0	0.951	56.7	93.0	-52.5	106.9	330	1.0	0.0	0.967			
330	333	331	1.0	0.0	0.95	56.6	92.9	-52.4	106.7	330	1.0	0.0	0.898	55.9	91.2	-46.4	102.4	333	1.0	0.0	0.95	1.0	0.0	0.931	56.4	92.4	-50.2	105.2	331	1.0	0.0	0.95			
331	334	332	1.0	0.0	0.933	56.4	92.4	-50.5	105.3	331	1.0	0.0	0.876	55.7	90.4	-44.0	100.5	334	1.0	0.0	0.933	1.0	0.0	0.911	56.1	91.7	-47.8	103.4	332	1.0	0.0	0.933			
332	335	333	1.0	0.0	0.916	56.1	91.8	-48.6	103.9	332	1.0	0.0	0.86	55.5	90.0	-41.9	99.3	335	1.0	0.0	0.917	1.0	0.0	0.89	55.8	90.9	-45.5	101.7	333	1.0	0.0	0.917			
332	336	334	1.0	0.0	0.9	55.9	91.2	-46.7	102.5	332	1.0	0.0	0.843	55.3	89.6	-39.8	98.1	336	1.0	0.0	0.9	1.0	0.0	0.871	55.6	90.2	-43.3	100.2	334	1.0	0.0	0.9			
333	337	335	1.0	0.0	0.883	55.7	90.6	-44.8	101.1	333	1.0	0.0	0.827	55.1	89.2	-37.8	96.9	337	1.0	0.0	0.883	1.0	0.0	0.856	55.4	89.9	-41.4	99.0	335	1.0	0.0	0.883			
334	338	336	1.0	0.0	0.866	55.5	90.1	-42.8	99.8	334	1.0	0.0	0.811	54.9	88.8	-35.8	95.8	338	1.0	0.0	0.867	1.0	0.0	0.84	55.2	89.6	-39.4	97.9	336	1.0	0.0	0.867			
335	339	337	1.0	0.0	0.85	55.3	89.8	-40.7	98.6	335	1.0	0.0	0.794	54.7	88.3	-33.8	94.6	339	1.0	0.0	0.85	1.0	0.0	0.825	55.1	89.2	-37.5	96.8	337	1.0	0.0	0.85			
336	340	338																																	

nif	HC*Fe	rgb*Fe	iet*Fe	hsa*Fe	rgb*Fe	LabCH*Fe	LabCH*Fe	rgb*Fe	DF*Fe	hsa*Fe	rgb*Fe	LabCH*Fe	LabCH*Fe	DF*Fe	hsa*Fe	rgb*Fe	LabCH*Fe	LabCH*Fe			
0/648	R00Y_100_100%	1.0	0.0	0.0	0.0	0.263	50.9	78.3	37.3	86.7	25.4	0.0	0.0	0.0	0.0	0.0	0.0	0.0	25.4		
1/657	R13Y_100_100%	1.0	0.0	0.5	37	0.0	0.156	50.6	77.6	50.9	92.9	33.2	1.0	0.0	0.156	50.6	77.6	50.9	92.9		
2/666	R25Y_100_100%	1.0	0.0	0.5	44	1.0	0.102	51.3	74.4	64.8	98.7	41.0	1.0	0.0	0.102	51.3	74.4	64.8	98.7		
3/675	R38Y_100_100%	1.0	0.0	0.5	52	1.0	0.358	50.0	57.6	56.9	67.8	88.5	49.9	1.0	0.358	50.0	57.6	56.9	67.8		
4/684	R50Y_100_100%	1.0	0.5	0.0	60	1.0	0.487	60.0	63.1	42.7	70.8	82.7	58.8	1.0	0.487	60.0	63.1	42.7	70.8		
5/693	R63Y_100_100%	1.0	0.0	0.5	68	1.0	0.589	0.0	68.2	30.2	74.2	80.1	67.8	1.0	0.589	0.0	68.2	30.2	74.2		
6/702	R75Y_100_100%	1.0	0.75	0.0	76	1.0	0.684	0.0	73.5	18.3	77.7	79.8	84.5	1.0	0.684	0.0	73.5	18.3	77.7		
7/711	R88Y_100_100%	1.0	0.875	0.0	83	1.0	0.767	0.0	78.3	7.7	80.7	81.0	84.5	1.0	0.767	0.0	78.3	7.7	80.7		
8/720	Y00G_100_100%	1.0	1.0	0.0	90	1.0	0.856	0.0	83.7	-3.4	84.5	84.5	84.5	1.0	0.856	0.0	83.7	-3.4	84.5		
9/639	Y13C_100_100%	0.875	1.0	0.0	97	1.0	0.966	0.0	90.5	-16.5	89.4	91.0	100.6	1.0	0.966	0.0	90.5	-16.5	89.4		
10/558	Y25C_100_100%	0.75	1.0	0.0	104	0.906	1.0	0.0	90.5	-16.5	89.4	91.0	100.6	1.0	0.906	1.0	0.0	90.5	-16.5	89.4	
11/477	Y38C_100_100%	0.625	1.0	0.0	112	0.743	1.0	0.0	88.4	-45.9	88.9	93.8	108.6	1.0	0.743	1.0	0.0	88.4	-45.9	88.9	
12/396	Y50C_100_100%	0.5	1.0	0.0	120	0.528	1.0	0.0	85.9	-55.7	87.1	117.9	154.4	1.0	0.528	1.0	0.0	85.9	-55.7	87.1	
13/315	Y63C_100_100%	0.375	1.0	0.0	128	0.315	1.0	0.0	85.7	-63.0	82.8	104.1	127.2	1.0	0.315	1.0	0.0	85.7	-63.0	82.8	
14/234	Y75C_100_100%	0.25	1.0	0.0	136	0.25	1.0	0.0	84.7	-72.8	80.4	112.2	134.1	1.0	0.25	1.0	0.0	84.7	-72.8	80.4	
15/153	Y88C_100_100%	0.125	1.0	0.0	143	0.125	1.0	0.0	84.1	-81.4	80.0	114.2	135.5	1.0	0.125	1.0	0.0	84.1	-81.4	80.0	
16/72	G00C_100_100%	0.0	1.0	0.0	150	0.0	1.0	0.0	85.6	-82.7	79.8	115.0	136.0	1.0	0.0	1.0	0.0	85.6	-82.7	79.8	
17/73	G13C_100_100%	0.0	1.0	0.125	157	0.0	1.0	0.125	83.6	-82.1	76.5	112.3	137.0	1.0	0.0	1.0	0.125	83.6	-82.1	76.5	
18/74	G25C_100_100%	0.0	1.0	0.25	164	0.0	1.0	0.25	83.6	-80.5	69.1	106.1	139.3	1.0	0.0	1.0	0.25	83.6	-80.5	69.1	
19/75	G38C_100_100%	0.0	1.0	0.375	172	0.0	1.0	0.375	84.0	-77.7	58.1	97.1	143.2	1.0	0.0	1.0	0.375	84.0	-77.7	58.1	
20/76	G50C_100_100%	0.0	1.0	0.5	180	0.0	1.0	0.5	84.3	-73.7	44.9	86.6	148.6	1.0	0.0	1.0	0.5	84.3	-73.7	44.9	
21/77	G63C_100_100%	0.0	1.0	0.625	188	0.0	1.0	0.625	84.7	-68.5	30.6	73.0	153.9	1.0	0.0	1.0	0.625	84.7	-68.5	30.6	
22/78	G75C_100_100%	0.0	1.0	0.75	196	0.0	1.0	0.75	85.3	-62.0	15.8	64.9	163.6	1.0	0.0	1.0	0.75	85.3	-62.0	15.8	
23/79	G88C_100_100%	0.0	1.0	0.875	203	0.0	1.0	0.875	86.0	-54.5	1.0	54.3	178.8	1.0	0.0	1.0	0.875	86.0	-54.5	1.0	
24/80	C00B_100_100%	0.0	1.0	0.0	210	0.0	1.0	0.0	86.8	-46.1	-13.5	196.3	18.7	1.0	0.0	1.0	0.0	86.8	-46.1	-13.5	
25/81	C13B_100_100%	0.0	1.0	0.0	217	0.0	1.0	0.0	87.5	-32.3	-27.0	219.8	2.8	1.0	0.0	1.0	0.0	87.5	-32.3	-27.0	
26/62	C25B_100_100%	0.0	1.0	0.0	224	0.0	1.0	0.0	89.1	-17.0	-40.7	241.1	247.2	1.0	0.0	1.0	0.0	89.1	-17.0	-40.7	
27/53	C38B_100_100%	0.0	1.0	0.0	232	0.0	1.0	0.0	90.3	-11.1	-54.6	269.8	32.0	1.0	0.0	1.0	0.0	90.3	-11.1	-54.6	
28/44	C50B_100_100%	0.0	1.0	0.0	240	0.0	1.0	0.0	91.7	18.3	-68.3	307.5	285.0	1.0	0.0	1.0	0.0	91.7	18.3	-68.3	
29/35	C63B_100_100%	0.0	1.0	0.0	248	0.0	1.0	0.0	93.0	-9.0	-89.7	351.6	311.6	1.0	0.0	1.0	0.0	93.0	-9.0	-89.7	
30/26	C75B_100_100%	0.0	1.0	0.0	256	0.0	1.0	0.0	94.5	-4.2	-92.3	407.9	301.1	1.0	0.0	1.0	0.0	94.5	-4.2	-92.3	
31/17	C88B_100_100%	0.0	1.0	0.0	263	0.0	1.0	0.0	96.4	-1.0	-100.0	472.9	304.8	1.0	0.0	1.0	0.0	96.4	-1.0	-100.0	
32/8	B00M_100_100%	0.0	0.0	1.0	270	0.0	0.0	1.0	100.0	128.5	306.2	92.5	232	1.0	0.0	0.0	1.0	100.0	128.5	306.2	
33/89	B13M_100_100%	0.125	0.0	1.0	277	0.0	0.0	1.0	100.0	128.5	306.2	92.5	232	1.0	0.0	0.0	1.0	100.0	128.5	306.2	
34/170	B25M_100_100%	0.25	0.0	1.0	284	0.0	0.5	1.0	100.0	128.5	306.2	92.5	232	1.0	0.0	0.5	1.0	100.0	128.5	306.2	
35/251	B38M_100_100%	0.375	0.0	1.0	292	0.0	0.0	1.0	100.0	128.5	306.2	92.5	232	1.0	0.0	0.0	1.0	100.0	128.5	306.2	
36/332	B50M_100_100%	0.5	0.0	1.0	300	0.0	0.0	1.0	100.0	128.5	306.2	92.5	232	1.0	0.0	0.0	1.0	100.0	128.5	306.2	
37/413	B63M_100_100%	0.625	0.0	1.0	308	0.0	0.263	0.0	1.0	100.0	128.5	306.2	92.5	1.0	0.0	0.263	0.0	1.0	100.0	128.5	306.2
38/494	B75M_100_100%	0.75	0.0	1.0	316	0.0	0.638	0.0	1.0	100.0	128.5	306.2	92.5	1.0	0.0	0.638	0.0	1.0	100.0	128.5	306.2
39/575	B88M_100_100%	0.875	0.0	1.0	323	0.0	0.837	0.0	1.0	100.0	128.5	306.2	92.5	1.0	0.0	0.837	0.0	1.0	100.0	128.5	306.2
40/656	M00R_100_100%	1.0	0.0	1.0	330	1.0	0.0	0.991	57.1	94.1	-57.4	110.3	328.2	1.0	0.0	0.991	57.1	94.1	-57.4	110.3	
41/655	M13R_100_100%	1.0	0.0	0.875	337	1.0	0.0	0.855	55.4	89.9	-41.4	99.0	335.2	1.0	0.0	0.855	55.4	89.9	-41.4	99.0	
42/654	M25R_100_100%	1.0	0.0	0.75	344	1.0	0.0	0.747	54.1	86.7	-28.6	91.3	341.6	1.0	0.0	0.747	54.1	86.7	-28.6	91.3	
43/653	M38R_100_100%	1.0	0.0	0.625	352	1.0	0.0	0.65	53.2	84.5	-15.7	85.9	349.4	1.0	0.0	0.65	53.2	84.5	-15.7	85.9	
44/652	M50R_100_100%	1.0	0.0	0.5	360	1.0	0.0	0.617	52.9	83.6	-11.6	84.4	352.0	1.0	0.0	0.617	52.9	83.6	-11.6	84.4	
45/651	M63R_100_100%	1.0	0.0	0.375	368	1.0	0.0	0.521	52.2	81.8	1.3	81.8	358	1.0	0.0	0.521	52.2	81.8	1.3	81.8	
46/650	M75R_100_100%	1.0	0.0	0.25	376	1.0	0.0	0.429	51.6	80.5	14.0	81.7	364	1.0	0.0	0.429	51.6	80.5	14.0	81.7	
47/649	M88R_100_100%	1.0	0.0	0.125	383	1.0	0.0	0.348	51.2	79.2	25.2	83.2	371.6	1.0	0.0	0.348	51.2	79.2	25.2	83.2	
48/648	R00Y_100_100%	1.0	0.0	0.0	390	1.0	0.0	0.263	50.9	78.3	37.3	86.7	25.4	1.0	0.0	0.263	50.9	78.3	37.3	86.7	
49/0	NV_00%	0.0	0.0	0.0	360	0.0	0.0	0.0	0.0	0.0	0.0	0.0	0.0	0.0	0.0	0.0	0.0	0.0	0.0	0.0	
50/91	NV_01%	0.125	0.0	0.0	360	0.125	0.125	0.125	11.0	0.0	0.0	0.0	0.0	0.0	0.0	0.0	0.0	0.0	0.0	0.0	
51/182	NV_02%	0.25	0.0	0.0	360	0.25	0.25	0.25	23.2	0.0	0.0	0.0	0.0	0.0	0.0	0.0	0.0	0.0	0.0	0.0	
52/273	NV_03%	0.375	0.0	0.0	360	0.375	0.375	0.375	35.3	0.0	0.0	0.0	0.0	0.0	0.0	0.0	0.0	0.0	0.0	0.0	
53/364	NV_05%	0.5	0.0	0.0	360	0.5	0.5	0.5	50.6	0.0	0.0	0.0	0.0	0.0	0.0	0.0	0.0	0.0	0.0	0.0	
54/455	NV_06%	0.625	0.0	0.0	360	0.625	0.625	0.625	62.7	0.0	0.0	0.0	0.0	0.0	0.0	0.0	0.0	0.0	0.0	0.0	
55/546	NV_07%	0.75	0.0	0.0	360	0.75	0.75	0.75	75.0	0.0	0.0	0.0	0.0	0.0	0.0	0.0	0.0	0.0	0.0	0.0	
56/637	NV_08%	0.875	0.0	0.0	360	0.875	0.875	0.875	87.4	0.0	0.0	0.0	0.0	0.0	0.0	0.0	0.0	0.0	0.0	0.0	
57/728	NV_10%	1.0	0.0	0.0	360	1.0	1.0	1.0	95.4	0.0	0.0	0.0	0.0	0.0	0.0	0.0	0.0	0.0	0.0	0.0	

RF520-7N; 14/29-F

graphique TUB-RF52; 1080 couleurs standard couleurs et différences, ΔE*_{uv}

entrée : rgb/cmyk -> rgbe sortie : transférer à rgbe

delta E*_{uv} = 26.3

TUB enregistrement: 20130201-RF52/RF52LONA.TXT /PS application pour la mesure de sortie sur écran, aucune séparation

TUB matériel: code=rha4ta

Table with 16 columns: n, HHC*Fe, rpb*Fe, icr*Fe, HsL*Fe, rpb*Fe, LabCH*Fe, LabCH*Fe, rpb*Fe, rpb*Fe, LabCH*Fe, DF*Fe, HsM*Fe, rpb*Fe, LabCH*Fe, LabCH*Fe. Rows 81-161.

entrée : rgb/cmyk -> rgbe sortie : transférer à rgbe

graphique TUB-RF52; 1080 couleurs standard couleurs et différences, ΔE*

RF5201N-1729-F

3-0131630-F0

TUB enregistrement: 20130201-RF52/RF52LONA.TXT /PS TUB matériel: code=rha4ta application pour la mesure de sortie sur écran, aucune séparation

Table with 24 columns: n, HHC%Fe, Rgb%Fe, iet%Fe, Hsa%Fe, Rgb%Fe, LabCh%Fe, iet%Fe, Hsa%Fe, Rgb%Fe, LabCh%Fe, Rgb%Fe, Hsa%Fe, LabCh%Fe, Rgb%Fe, DF%Fe, Hsa%Fe, Rgb%Fe, LabCh%Fe, Hsa%Fe, Rgb%Fe, LabCh%Fe, Hsa%Fe, Rgb%Fe, LabCh%Fe. Rows 162-242.

delta E* = 30.9

entrée : rgb/cmyk -> rgbe sortie : transférer à rgbe

graphique TUB-RF52; 1080 couleurs standard couleurs et différences, ΔE*

RF520-TN; 1829-F

3-0131730-F0

TUB enregistrement: 20130201-RF52/RF52LONA.TXT /PS application pour la mesure de sortie sur écran, aucune séparation

TUB matériel: code=rha4ta

voir fichiers similaires: http://130.149.60.45/~farbmetrik/RF52/RF52.HTM informations techniques: http://www.ps.bam.de ou http://130.149.60.45/~farbmetrik

Table with 323 rows and 10 columns: n, HHC*Fe, rpb*Fe, iet*Fe, hsa*Fe, rpb*Fe, LabCh*Fe, LabCh*Fe, rpb*Fe, LabCh*Fe. Each row contains numerical data for a specific file name.

entrée : rgb/cmyk -> rgbe sortie : transférer à rgbe

graphique TUB-RF52; 1080 couleurs standard couleurs et différences, ΔE*

RF520-TN; 19/29-F

3-0131830-F0

3-0131830-F0

TUB enregistrement: 20130201-RF52/RF52LONA.TXT /PS TUB matériel: code=rha4ta application pour la mesure de sortie sur écran, aucune séparation

Table with columns: n, HHC*Fe, Rgb*Fe, Ict*Fe, Hsa*Fe, Rgb*Fe, LabC*Fe, LabC*Fe, LabC*Fe, Rgb*Fe, Hsa*Fe, Rgb*Fe, LabC*Fe, LabC*Fe, DF*Fe, Rgb*Fe, Hsa*Fe, LabC*Fe, LabC*Fe, Rgb*Fe, Hsa*Fe, LabC*Fe, LabC*Fe. Rows list various colorimetric and photometric data points.

voir fichiers similaires: http://130.149.60.45/~farbmetrik/RF52/RF52LONA.TXT /PS; sortie de transfert informations techniques: http://www.pam.de ou http://130.149.60.45/~farbmetrik

entrée : rgb/cmyk -> rgbe sortie : transférer à rgbe

graphique TUB-RF52; 1080 couleurs standard couleurs et différences, ΔE*

RF520-TN; 21/29-F

3-0132030-F0

3-0132030-F0

TUB enregistrement: 20130201-RF52/RF52LONA.TXT /PS TUB matériel: code=rha4ta application pour la mesure de sortie sur écran, aucune séparation

Table with 10 columns: n, HC%Fe, rpb%Fe, iet%Fe, Hs%Fe, rpb%Fe, LabCh%Fe, LabCh%Fe, rpb%Fe, LabCh%Fe, DF%Fe, Hs%Fe, rpb%Fe, LabCh%Fe. Rows list various material codes and their corresponding numerical values.

entrée : rgb/cmyk -> rgbe sortie : transférer à rgbe

graphique TUB-RF52; 1080 couleurs standard couleurs et différences, ΔE*

RF520-TN: 25/29-F

3-0132430-F0

Table with 10 columns: n, H/C%Fe, Rgb%Fe, iEt%Fe, Hs%Fe, Rgb%Fe, LabC%Fe, iEt%Fe, Hs%Fe, Rgb%Fe, LabC%Fe. Rows 891-971. Includes a 'delta E*' = 22.0 note at the bottom right.

entrée : rgb/cmyk -> rgbe sortie : transférer à rgbe

graphique TUB-RF52; 1080 couleurs standard couleurs et différences, ΔE*

TUB enregistrement: 20130201-RF52/RF52L0NA.TXT /PS TUB matériel: code=rha4ta application pour la mesure de sortie sur écran, aucune séparation

n	HC*Fe	rgb*Fe	iet_Fe	hsa_Fe	rgb*Fe	LabCh*Fe	hsa_Fe	LabCh*Fe	rgb*Fe	DF*Fe	hsa_Me	rgb*Me	LabCh*Me	hsa_Me	DF*Me	LabCh*Me
1053	NW_086e	0.866	0.866	0.866	0.866	0.866	0.866	0.866	0.866	0.866	0.866	0.866	0.866	0.866	0.866	0.866
1054	NW_093e	0.933	0.933	0.933	0.933	0.933	0.933	0.933	0.933	0.933	0.933	0.933	0.933	0.933	0.933	0.933
1055	NW_100e	1.0	1.0	1.0	1.0	1.0	1.0	1.0	1.0	1.0	1.0	1.0	1.0	1.0	1.0	1.0
1056	NW_000e	0.0	0.0	0.0	0.0	0.0	0.0	0.0	0.0	0.0	0.0	0.0	0.0	0.0	0.0	0.0
1057	NW_006e	0.066	0.066	0.066	0.066	0.066	0.066	0.066	0.066	0.066	0.066	0.066	0.066	0.066	0.066	0.066
1058	NW_013e	0.133	0.133	0.133	0.133	0.133	0.133	0.133	0.133	0.133	0.133	0.133	0.133	0.133	0.133	0.133
1059	NW_020e	0.2	0.2	0.2	0.2	0.2	0.2	0.2	0.2	0.2	0.2	0.2	0.2	0.2	0.2	0.2
1060	NW_026e	0.266	0.266	0.266	0.266	0.266	0.266	0.266	0.266	0.266	0.266	0.266	0.266	0.266	0.266	0.266
1061	NW_033e	0.333	0.333	0.333	0.333	0.333	0.333	0.333	0.333	0.333	0.333	0.333	0.333	0.333	0.333	0.333
1062	NW_040e	0.4	0.4	0.4	0.4	0.4	0.4	0.4	0.4	0.4	0.4	0.4	0.4	0.4	0.4	0.4
1063	NW_046e	0.466	0.466	0.466	0.466	0.466	0.466	0.466	0.466	0.466	0.466	0.466	0.466	0.466	0.466	0.466
1064	NW_053e	0.533	0.533	0.533	0.533	0.533	0.533	0.533	0.533	0.533	0.533	0.533	0.533	0.533	0.533	0.533
1065	NW_060e	0.6	0.6	0.6	0.6	0.6	0.6	0.6	0.6	0.6	0.6	0.6	0.6	0.6	0.6	0.6
1066	NW_066e	0.666	0.666	0.666	0.666	0.666	0.666	0.666	0.666	0.666	0.666	0.666	0.666	0.666	0.666	0.666
1067	NW_073e	0.734	0.734	0.734	0.734	0.734	0.734	0.734	0.734	0.734	0.734	0.734	0.734	0.734	0.734	0.734
1068	NW_080e	0.8	0.8	0.8	0.8	0.8	0.8	0.8	0.8	0.8	0.8	0.8	0.8	0.8	0.8	0.8
1069	NW_086e	0.866	0.866	0.866	0.866	0.866	0.866	0.866	0.866	0.866	0.866	0.866	0.866	0.866	0.866	0.866
1070	NW_093e	0.933	0.933	0.933	0.933	0.933	0.933	0.933	0.933	0.933	0.933	0.933	0.933	0.933	0.933	0.933
1071	NW_100e	1.0	1.0	1.0	1.0	1.0	1.0	1.0	1.0	1.0	1.0	1.0	1.0	1.0	1.0	1.0
1072	NW_000e	0.0	0.0	0.0	0.0	0.0	0.0	0.0	0.0	0.0	0.0	0.0	0.0	0.0	0.0	0.0
1073	NW_006e	0.066	0.066	0.066	0.066	0.066	0.066	0.066	0.066	0.066	0.066	0.066	0.066	0.066	0.066	0.066
1074	ROY_100_100e	1.0	1.0	1.0	1.0	1.0	1.0	1.0	1.0	1.0	1.0	1.0	1.0	1.0	1.0	1.0
1075	GS0B_100_100e	0.0	0.0	0.0	0.0	0.0	0.0	0.0	0.0	0.0	0.0	0.0	0.0	0.0	0.0	0.0
1076	Y06C_100_100e	0.0	0.0	0.0	0.0	0.0	0.0	0.0	0.0	0.0	0.0	0.0	0.0	0.0	0.0	0.0
1077	B00L_100_100e	0.0	0.0	0.0	0.0	0.0	0.0	0.0	0.0	0.0	0.0	0.0	0.0	0.0	0.0	0.0
1078	B00R_100_100e	0.0	0.0	0.0	0.0	0.0	0.0	0.0	0.0	0.0	0.0	0.0	0.0	0.0	0.0	0.0
1079	B50R_100_100e	0.0	0.0	0.0	0.0	0.0	0.0	0.0	0.0	0.0	0.0	0.0	0.0	0.0	0.0	0.0

delta E** = 9.3

voir fichiers similaires: http://130.149.60.45/~farbmetrik/RF52/RF52.HTM informations techniques: http://www.ps.bam.de ou http://130.149.60.45/~farbmetrik

entrée : rgb/cmyk -> rgbe sortie : transférer à rgbe

graphique TUB-RF52; 1080 couleurs standard couleurs et différences, ΔE*