

Input and output: Laser Reflective System LRS18a

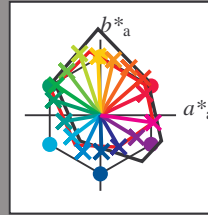
Data for any device (d)  
or elementary (e) colour:

$HIC^*_e$

Hue text for the 16 hues  
of this page:

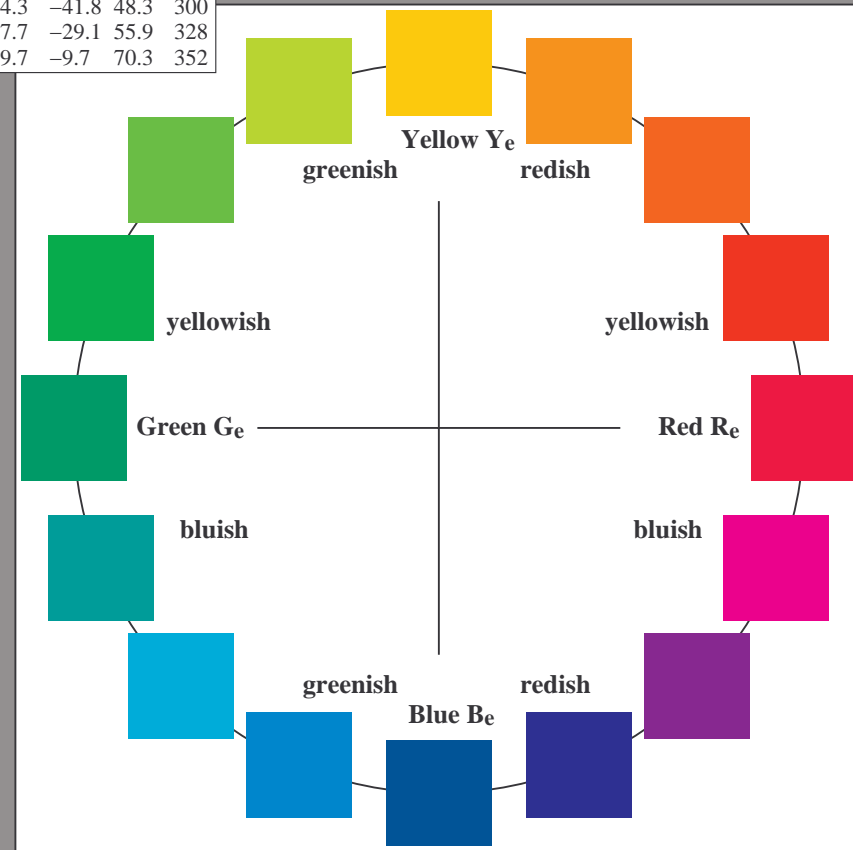
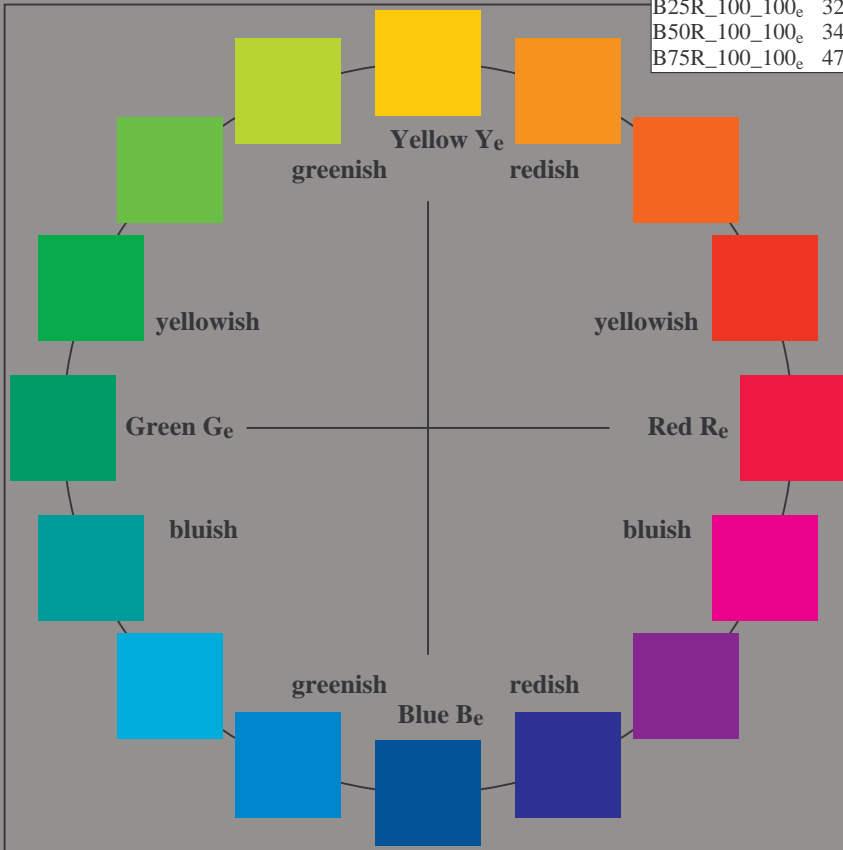
$H^*_e = R00Y_e, R25Y_e, \dots, B75R_e$

LRS18a $H^*_e$	$L^* = L^*_a a^*_a$	$b^*_a$	$C^*_{ab,a}$	$h^*_{ab,a}$	
R00Y_100_100_e	46.2	59.0	28.1	65.4	25
R25Y_100_100_e	50.6	56.2	48.9	74.5	41
R50Y_100_100_e	60.9	37.9	62.8	73.4	58
R75Y_100_100_e	71.8	17.3	73.4	75.4	76
Y00G_100_100_e	84.0	-3.1	78.1	78.1	92
Y25G_100_100_e	84.2	-27.4	81.4	85.9	108
Y50G_100_100_e	69.4	-44.3	58.2	73.2	127
Y75G_100_100_e	58.7	-58.5	39.6	70.6	145
G00B_100_100_e	55.0	-62.1	19.9	65.3	162
G25B_100_100_e	57.1	-47.9	-8.1	48.6	189
G50B_100_100_e	55.9	-37.6	-28.3	47.1	216
G75B_100_100_e	51.1	-23.0	-47.9	53.2	244
B00R_100_100_e	37.3	1.4	-48.1	48.1	271
B25R_100_100_e	32.0	24.3	-41.8	48.3	300
B50R_100_100_e	34.6	47.7	-29.1	55.9	328
B75R_100_100_e	47.4	69.7	-9.7	70.3	352



%Gamut  
 $u^*_{rel} = 114$   
 %Regularity  
 $g^*_{H,rel} = 28$   
 $g^*_{C,rel} = 38$

LRS18a Name	$L^* = L^*_a a^*_a$	$b^*_a$	$C^*_{ab,a}$	$h^*_{ab,a}$	
Re, Ma	46.2	59.0	28.1	65.4	25
Ye, Ma	84.0	-3.1	78.1	78.1	92
Ge, Ma	55.0	-62.1	19.9	65.3	162
Ce, Ma	55.9	-37.6	-28.3	47.1	216
Be, Ma	37.3	1.4	-48.1	48.1	271
Me, Ma	34.6	47.7	-29.1	55.9	328
Ne, Ma	24.5	0.0	0.0	0.0	0
We, Ma	96.3	0.0	0.0	0.0	0
Re, CIE	39.9	58.7	27.9	65.0	25
Ye, CIE	81.2	-2.8	71.5	71.6	92
Ge, CIE	52.2	-42.4	13.6	44.5	162
Be, CIE	30.5	1.4	-46.4	46.4	271



voir des dossiers similaires: <http://130.149.60.45/~farbmetrik/RF84/RF84.LOFP.PDF>  
 Informations techniques: <http://www.ps.bam.de> ou <http://130.149.60.45/~farbmetrik>

TUB enregistrement: 20130201-RF84/RF84LOFP.PDF /.PS  
 application pour la mesure de production de imprimante laser, séparation cmy0\* (CMY0)  
 TUB matériel: code=ih44ta

RF840-73 3-113131-L0

graphique TUB-RF84; cercle de teinte, 16 étapes,  $cf=1$   
 graphique selon DIN 33872, 3D=1,  $de=1$ ,  $cmy0^*$

données:  $rgb/cmyk \rightarrow rgb_{de}$   
 production: 3D-linearization à  $cmy0^*_{de}$

3-113131-F0