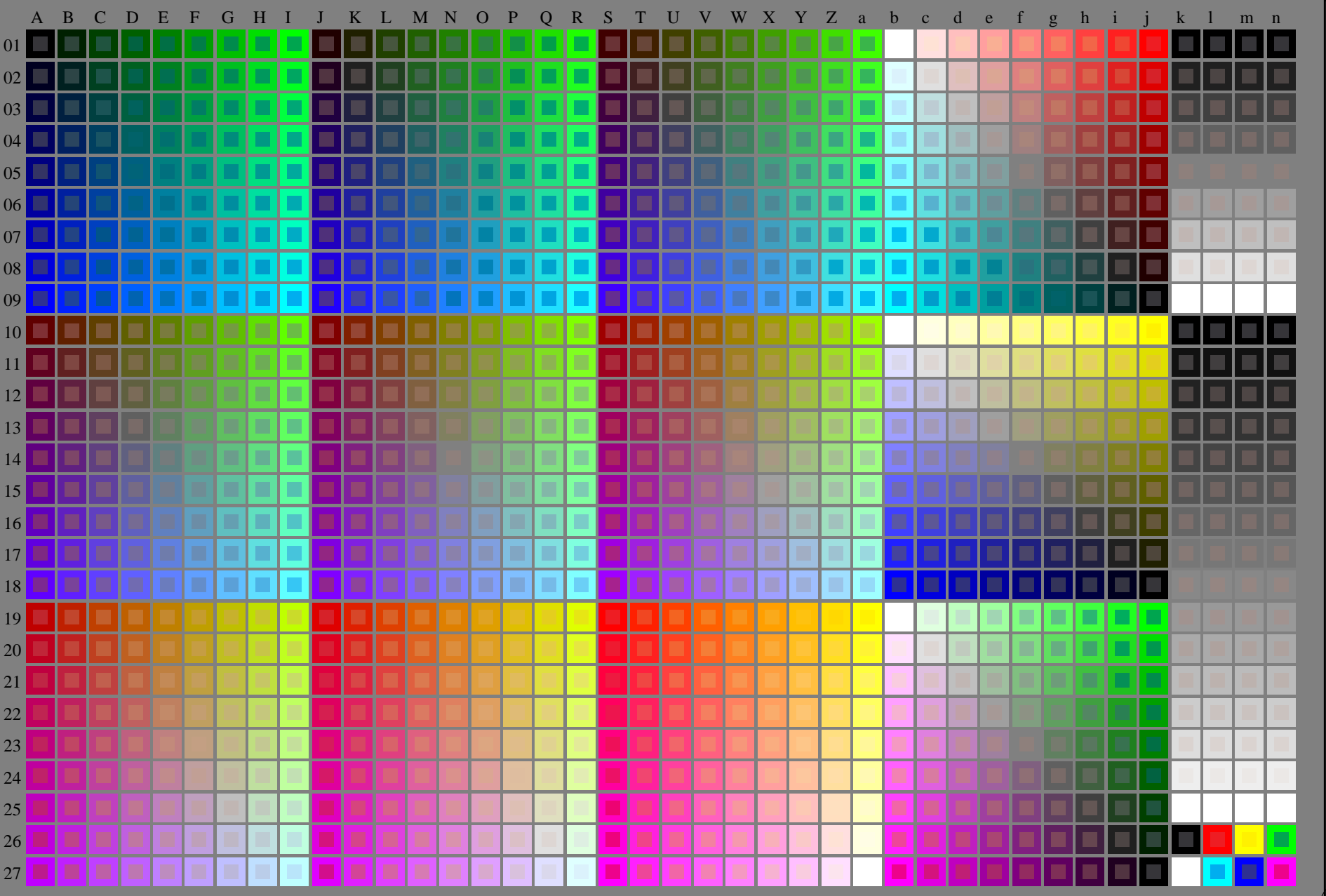


vedere dei file simili: <http://130.149.60.45/~farbmetrik/RI58/RI58.HTM>
informazioni tecniche: <http://www.ps.bam.de> o <http://130.149.60.45/~farbmetrik>



4-013031-L0 RI580-7N rgb + cmy0 (A..j + k26..n27), 000n (k), w (l), nnn0 (m), www (n), 3D=0

grafico TUB-RI58; 1080 colori standard immettere: *rgb/cmyk* -> *rgb/cmyk*
grafico conformemente a DIN 33872, 3D=0, de=1, *cmy0* uscita: nessun cambiamento

TUB iscrizione: 20130201-RI58/RI58LONP.PDF /.PS
la domanda per la misura uscita nella stampa di offset

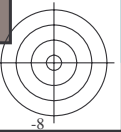
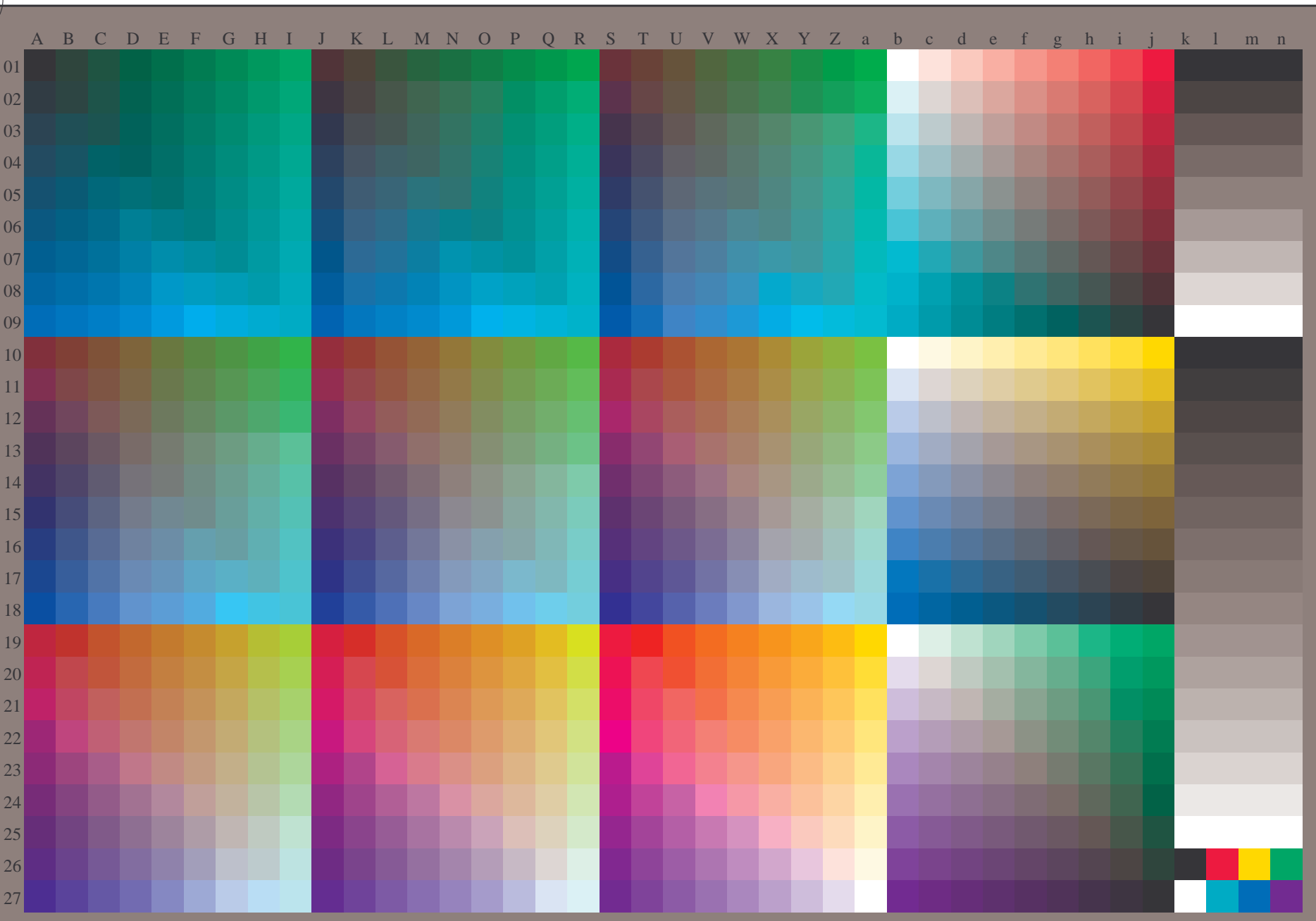
TUB materiale: code=rh4ta



vedere dei file simili: <http://130.149.60.45/~farbmetrik/RI58/RI58.HTM>
informazioni tecniche: <http://www.ps.bam.de> o <http://130.149.60.45/~farbmetrik>

TUB iscrizione: 20130201-RI58/RI58L0NP.PDF /.PS
la domanda per la misura uscita nella stampa di offset, separazione cmy0 (CMY0)

TUB materiale: code=rh4ta



4-013131-L0 RI580-71

rgb (A_n), 3D=0

grafico TUB-RI58; 1080 colori standard
grafico conformemente a DIN 33872, 3D=0, de=1, cmy0

immettere: $rgb/cmyk \rightarrow rgb_e$
uscita: trasferire a $cmy0_e$

4-013131-F0

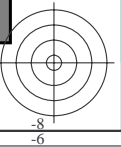
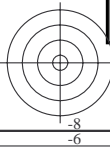
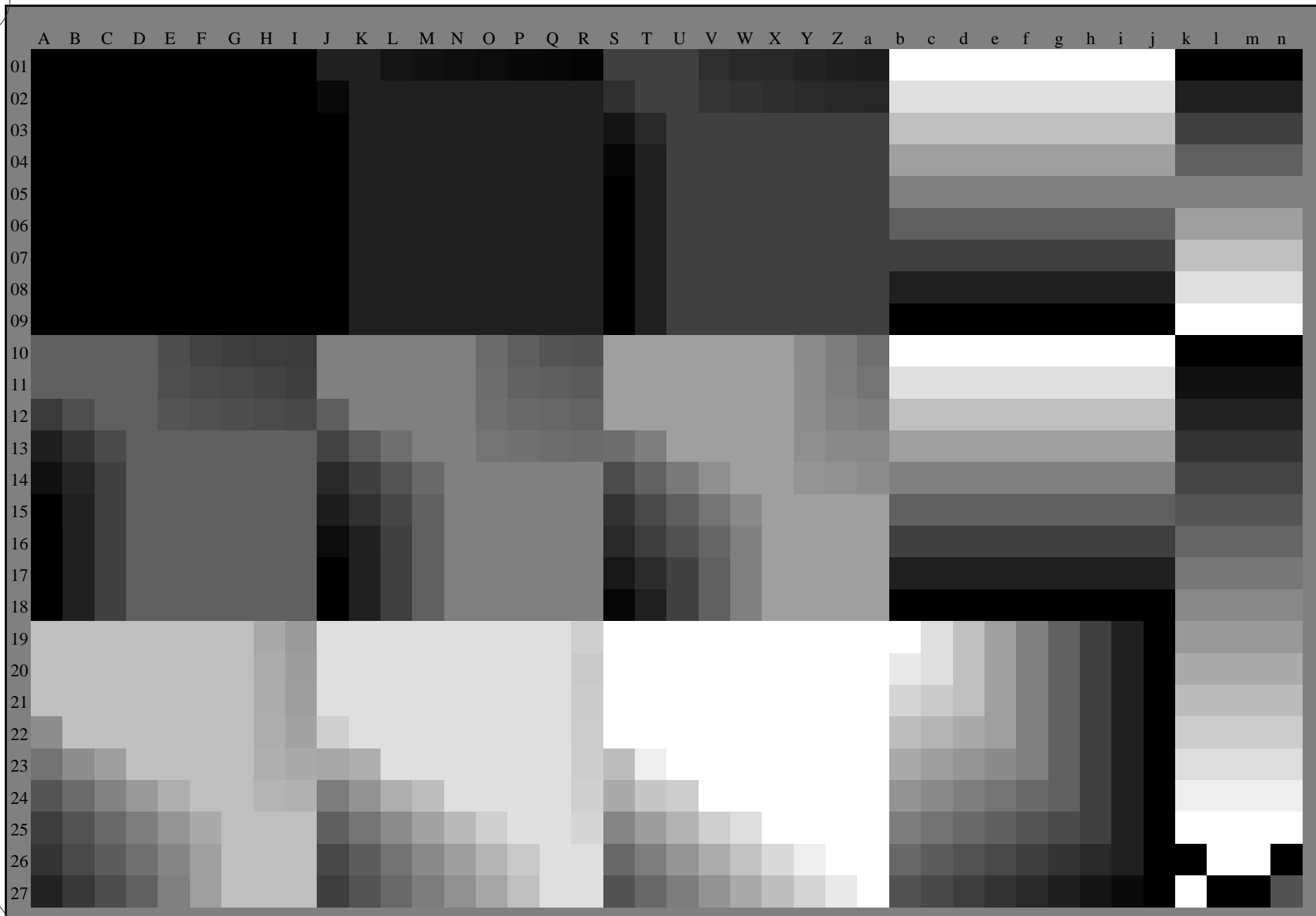
C M Y O L V



vedere dei file simili: <http://130.149.60.45/~farbmetrik/RI58/RI58.HTM>
informazioni tecniche: <http://www.ps.bam.de> o <http://130.149.60.45/~farbmetrik>

TUB iscrizione: 20130201-RI58/RI58L0NP.PDF /.PS
la domanda per la misura uscita nella stampa di offset, separazione cmy0 (CMY0)

TUB materiale: code=rh4ta



4-013231-L0 RI580-71

,3D=0

grafico TUB-RI58; 1080 colori standard
grafico conformemente a DIN 33872, 3D=0, de=1, cmy0

immettere: *rgb/cmyk* -> *rgb_e*
uscita: trasferire a *cmy0_e*

4-013231-F0

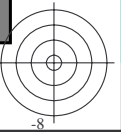
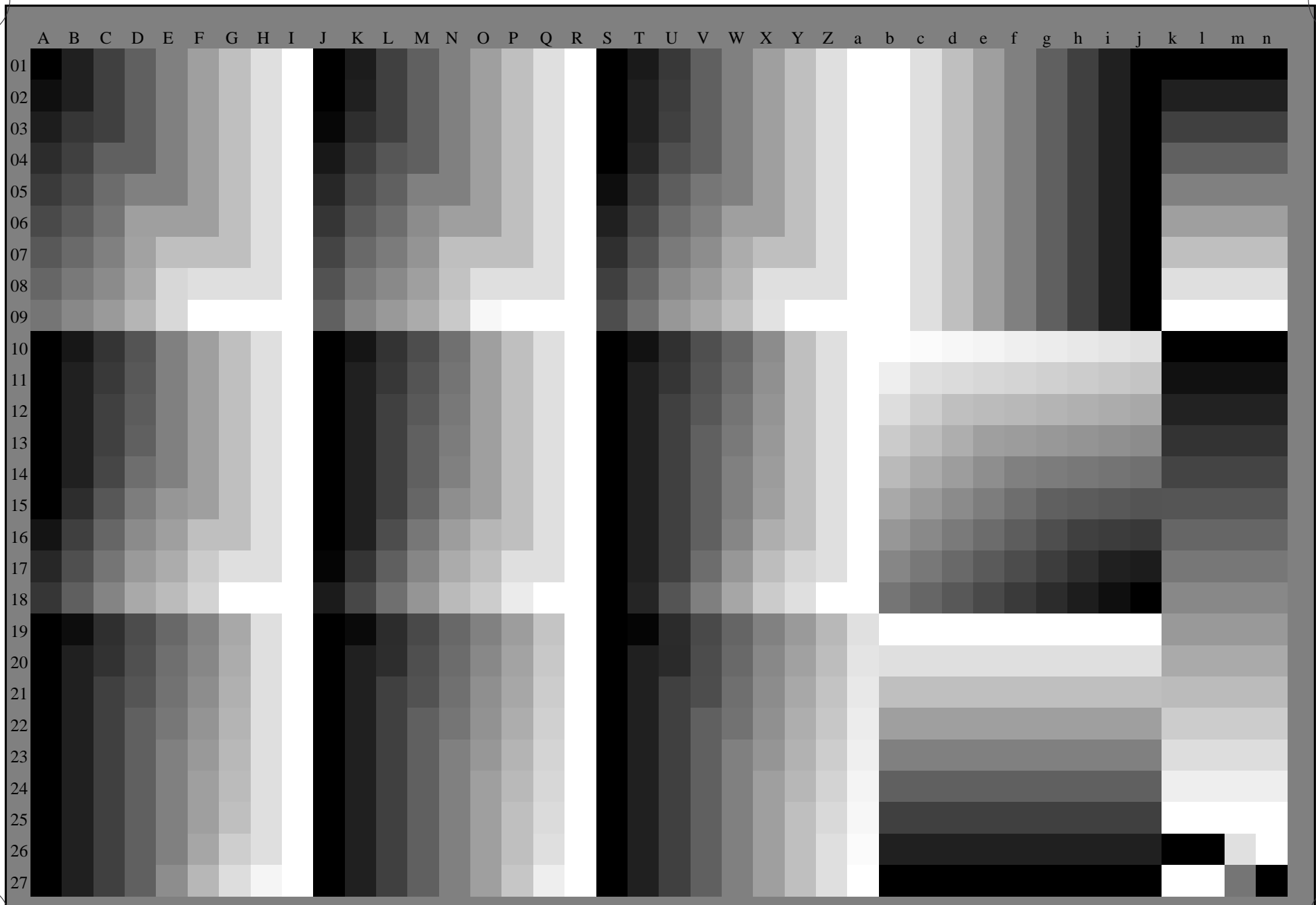
C M Y O L V



vedere dei file simili: <http://130.149.60.45/~farbmetrik/RI58/RI58.HTM>
informazioni tecniche: <http://www.ps.bam.de> o <http://130.149.60.45/~farbmetrik>

TUB iscrizione: 20130201-RI58/RI58L0NP.PDF /.PS
la domanda per la misura uscita nella stampa di offset, separazione cmy0 (CMY0)

TUB materiale: code=rh4ta



4-013331-L0 RI580-71

.3D=0

grafico TUB-RI58; 1080 colori standard
grafico conformemente a DIN 33872, 3D=0, de=1, cmy0

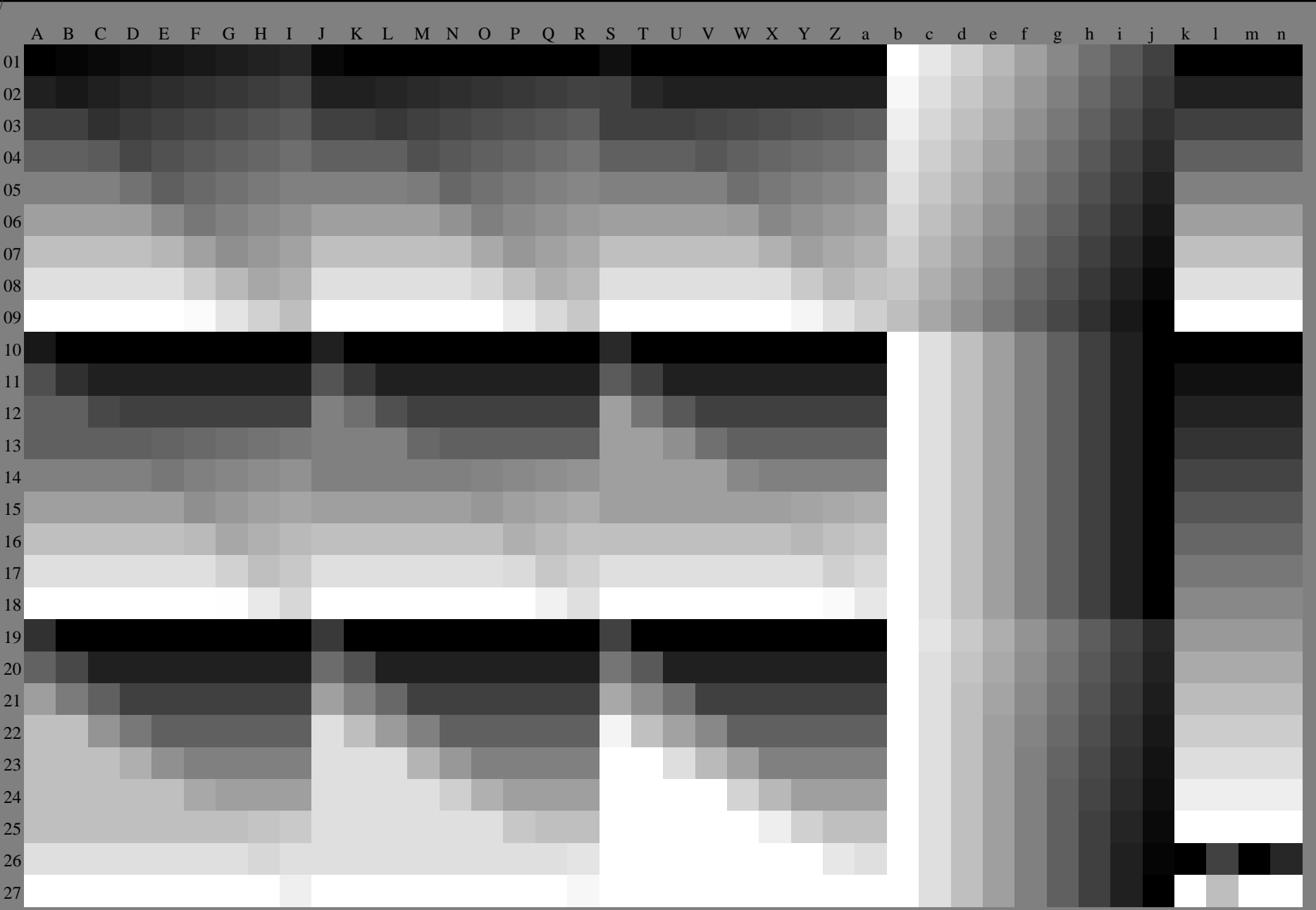
immettere: *rgb/cmyk* -> *rgb_e*
uscita: trasferire a *cmy0_e*

4-013331-F0

vedere dei file simili: <http://130.149.60.45/~farbmetrik/RI58/RI58.HTM>
informazioni tecniche: <http://www.ps.bam.de> o <http://130.149.60.45/~farbmetrik>

TUB iscrizione: 20130201-RI58/RI58L0NP.PDF /.PS
la domanda per la misura uscita nella stampa di offset, separazione cmy0 (CMY0)

TUB materiale: code=rh4ta



4-013431-L0 RI580-71

grafico TUB-RI58; 1080 colori standard
grafico conformemente a DIN 33872, 3D=0, de=1, cmy0

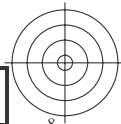
immettere: *rgb/cmyk* -> *rgb_e*
uscita: trasferire a *cmy0_e*

4-013431-F0



TUB iscrizione: 20130201-RI58/RI58L0NP.PDF /.PS TUB materiale: code=rh4ta
la domanda per la misura uscita nella stampa di offset, separazione cmy0 (CMY0)

vedere dei file simili: <http://130.149.60.45/~farbmetrik/RI58/RI58.HTM>
informazioni tecniche: <http://www.ps.bam.de> o <http://130.149.60.45/~farbmetrik>



4-013531-L0 RI580-71

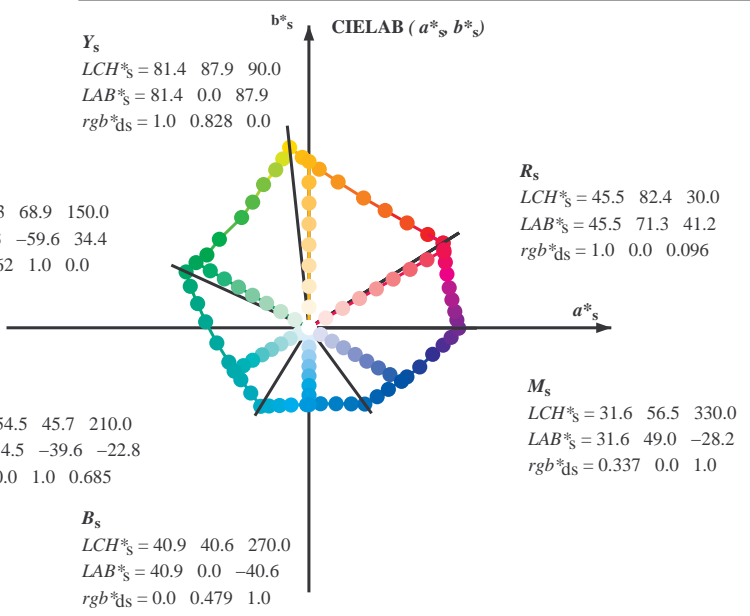
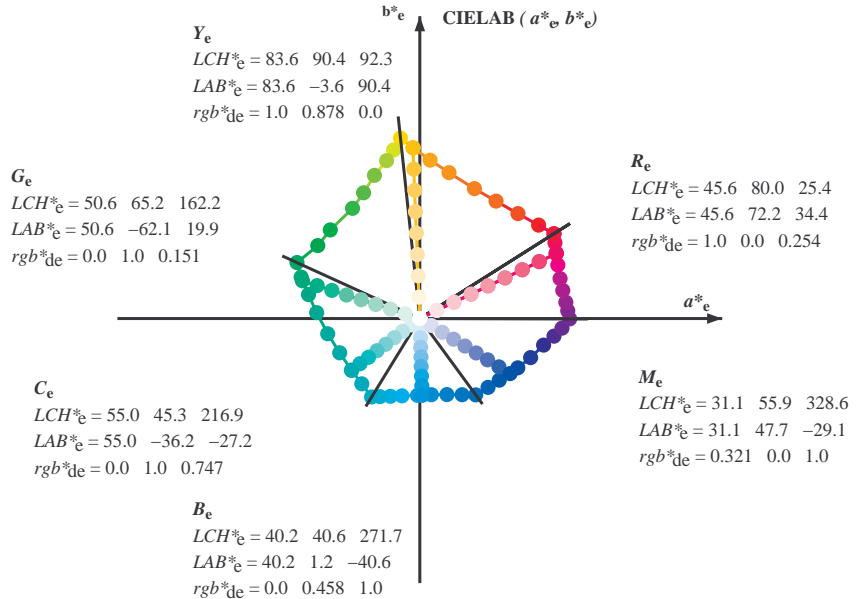
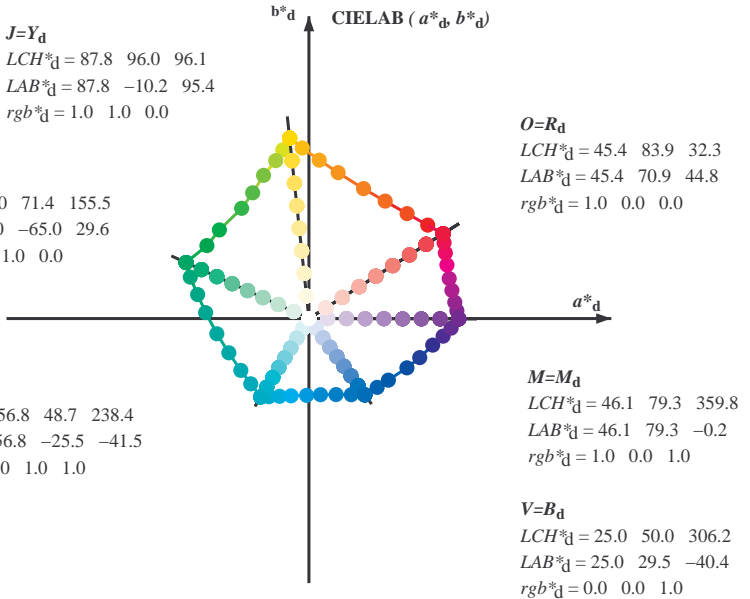
grafico TUB-RI58; 1080 colori standard
grafico conformemente a DIN 33872, 3D=0, de=1, cmy0

immettere: *rgb/cmyk* -> *rgbe*
uscita: trasferire a *cmy0e*



4-013531-F0

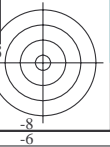
Data of Maximum color M in colorimetric system Offset standard print; separation cmy0*, D65 for input or output; Six hue angles of the 60 degree standard colours RYGCBS: $h_{ab,ds} = 30.0, 90.0, 150.0, 210.0, 270.0, 330.0$;
Six hue angles of the device colours RYGCBS: $h_{ab,d} = 32.3, 96.1, 155.5, 238.4, 306.2, 359.8$; Six hue angles of the elementary colours RYGCBS: $h_{ab,e} = 25.5, 92.3, 162.2, 217.0, 271.7, 328.6$



$(a^*_d, b^*_d), (a^*_s, b^*_s), (a^*_e, b^*_e)$
 $rgb^*_d, LCH^*_d, LAB^*_d$
 $h_{ab,s}, rgb^*_s$
 $h_{ab,s} = atan [r^*_d \cos(30) + g^*_d \cos(150)] / [r^*_d \sin(30) + g^*_d \sin(150) + b^*_d \sin(270)]$ (1)
 $h_{ab,s}$
 $s: h_{ab,s} = 30.0, 90.0, 150.0, 210.0, 270.0, 330.0, 390.0 (i=0,6)$
 $h_{48ab,sij} = h_{ab,si} + j [h_{ab,si+1} - h_{ab,si}] / 8 (i = 0, 1, \dots, 5; j = 0, 1, \dots, 7)$ (2)
 $h_{360ab,sij} = h_{ab,si} + j [h_{ab,si+1} - h_{ab,si}] / 60 (i = 0, 1, \dots, 5; j = 0, 1, \dots, 59)$ (3)
 $h_{ab,e}$
 $e: h_{ab,e} = 25.5, 92.3, 162.2, 217.0, 271.7, 328.6, 385.5 (i=0,6)$
 $h_{48ab,eij} = h_{ab,ei} + j [h_{ab,ei+1} - h_{ab,ei}] / 8 (i = 0, 1, \dots, 5; j = 0, 1, \dots, 7)$ (4)
 $h_{360ab,eij} = h_{ab,ei} + j [h_{ab,ei+1} - h_{ab,ei}] / 60 (i = 0, 1, \dots, 5; j = 0, 1, \dots, 59)$ (5)
 $h_{ab}, h_{ab,d}$
 rgb^*_e

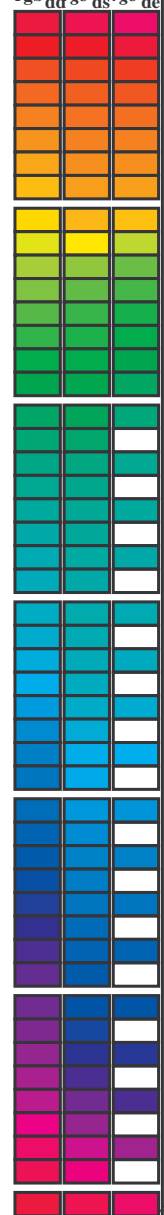
vedere dei file simili: http://130.149.60.45/~farbmetrik/RI58/RI58LONP.PDF /PS
informazioni tecniche: http://www.ps.bam.de o http://130.149.60.45/~farbmetrik

TUB iscrizione: 20130201-RI58/RI58LONP.PDF /PS
la domanda per la misura uscita nella stampa di offset, separazione cmy0 (CMY0)
TUB materiale: code=rh4ta



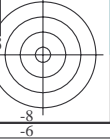
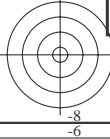
Data of maximum color M in colorimetric system Offset standard print; separation cmy0*, D65 for input or output; Six hue angles of the 60 degree standard colours RYGBM_s: h_{ab,ds} = 30.0, 90.0, 150.0, 210.0, 270.0, 330.0;
Six hue angles of the device colours RYGBM_d: h_{ab,d} = 32.3, 96.1, 155.5, 238.4, 306.2, 359.8; Six hue angles of the elementary colours RYGBM_e: h_{ab,e} = 25.5, 92.3, 162.2, 217.0, 271.7, 328.6

Table with 15 columns: h_{ab,d}, h_{ab,s}, h_{ab,e}, r_{gb}^a, d_{dx64M}, LAB*, ddx64M (x=LabCh), r_{gb}^b, d_{dx361M}, LAB*, ddx361M (x=LabCh), r_{gb}^c, d_{dsx361M}, LAB*, ddsx361M (x=LabCh), r_{gb}^d, d_{dex361M}, LAB*, dex361M. The table contains 392 rows of color data.



vedere dei file simili: http://130.149.60.45/~farbmetrik/RI58/RI58LONP.PDF /.PS
informazioni tecniche: http://www.ps.bam.de o http://130.149.60.45/~farbmetrik

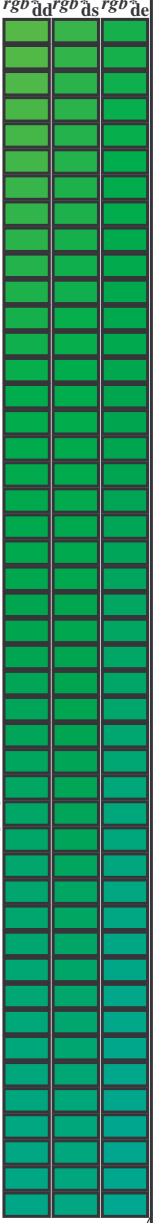
TUB iscrizione: 20130201-RI58/RI58LONP.PDF /.PS
la domanda per la misura uscita nella stampa di offset, separazione cmy0 (CMY0)
TUB materiale: code=rhatha



Data of Maximum color M in colorimetric system Offset standard print; separation cmy0*; D65 for input or output; Six hue angles of the 60 degree standard colours RYGBM_s: h_{ab,ds} = 30.0, 90.0, 150.0, 210.0, 270.0, 330.0;

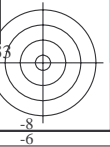
Six hue angles of the device colours RYGBM_d: h_{ab,d} = 32.3, 96.1, 155.5, 238.4, 306.2, 359.8; Six hue angles of the elementary colours RYGBM_e: h_{ab,e} = 25.5, 92.3, 162.2, 217.0, 271.7, 328.6

Table with 17 columns: h_{ab,d}, h_{ab,s}, h_{ab,e}, rgb*dd361M, LAB*dsx361Mi (x=LabCh), LAB*ds361Mi, rgb*dd361Mi, LAB*dex361Mi (x=LabCh), LAB*ds361Mi, rgb*dd361Mi, LAB*dex361Mi, LAB*ds361Mi, rgb*dd361Mi, LAB*dex361Mi, LAB*ds361Mi, rgb*dd361Mi, LAB*dex361Mi. Rows 114-167.



vedere dei file simili: http://130.149.60.45/~farbmetrik/RI58/RI58LONP.PDF /.PS; uscita di trasferimento

TUB iscrizione: 20130201-RI58/RI58LONP.PDF /.PS La domanda per la misura uscita nella stampa di offset, separazione cmy0 (CMY0) TUB materiale: code=rh4ta



Data of Maximum color M in colorimetric system Offset standard print; separation cmy0*; D65 for input or output; Six hue angles of the 60 degree standard colours RYGBM_S: h_{ab,ds} = 30.0, 90.0, 150.0, 210.0, 270.0, 330.0;

Six hue angles of the device colours RYGBM_d: h_{ab,d} = 32.3, 96.1, 155.5, 238.4, 306.2, 359.8; Six hue angles of the elementary colours RYGBM_e: h_{ab,e} = 25.5, 92.3, 162.2, 217.0, 271.7, 328.6

Table with 24 columns: h_{ab,d}, h_{ab,s}, h_{ab,e}, rgb*dd361M, LAB* ddx361Mi (x=LabCh), rgb*ds361Mi, LAB* dsx361Mi (x=LabCh), rgb*dd361Mi, rgb*dc361Mi, LAB* dex361Mi (x=LabCh), rgb*dd361Mi, and three columns for rgb*dd, rgb*ds, and rgb*de. Rows 167-238.

vedere dei file simili: http://130.149.60.45/~farbmetrik/RI58/RI58LONP.PDF /.PS informazioni tecniche: http://www.ps.bam.de o http://130.149.60.45/~farbmetrik

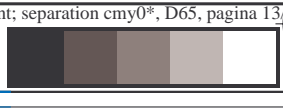
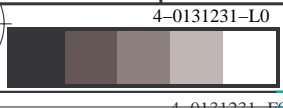
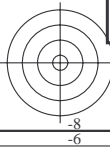
TUB iscrizione: 20130201-RI58/RI58LONP.PDF /.PS La domanda per la misura uscita nella stampa di offset, separazione cmy0 (CMY0) TUB materiale: code=rh4ta

4-0131231-L0 RI580-71 LAB*a0, YN=0%, XYZnw=3.6, 4.2, 6.1, 85.4, 89.1, 104.8, LAB*nw=24.4, 0.0, 0.0, 95.6, 0.0, 0.0

uscita: Offset standard print; separation cmy0*; D65, pagina 13/33

grafico TUB-RI58; 1080 colori standard cerchio delle tinte a 48 passi; rgb-LabCh*tavole

immettere: rgb/cmyk -> rgb_e uscita: trasferire a cmy0_e



Data of Maximum color M in colorimetric system Offset standard print; separation cmy0*; D65 for input or output; Six hue angles of the 60 degree standard colours RYGBM_s: h_{ab,ds} = 30.0, 90.0, 150.0, 210.0, 270.0, 330.0;

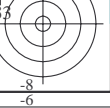
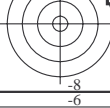
Six hue angles of the device colours RYGBM_d: h_{ab,d} = 32.3, 96.1, 155.5, 238.4, 306.2, 359.8; Six hue angles of the elementary colours RYGBM_e: h_{ab,e} = 25.5, 92.3, 162.2, 217.0, 271.7, 328.6

Table with 15 columns: h_{ab,d}, h_{ab,s}, h_{ab,e}, r_{gb}*_dd361M, LAB*_ddx361Mi (x=LabCh), r_{gb}*_ds361Mi, LAB*_dsx361Mi (x=LabCh), r_{gb}*_dd361Mi, LAB*_de361Mi, dex361Mi (x=LabCh), r_{gb}*_dd361Mi, LAB*_dd361Mi, r_{gb}*_ds361Mi, LAB*_ds361Mi, r_{gb}*_de361Mi. Rows 340-366.



vedere dei file simili: http://130.149.60.45/~farbmetrik/RI58/RI58LONP.PDF /PS informazioni tecniche: http://www.ps.bam.de o http://130.149.60.45/~farbmetrik

TUB iscrizione: 20130201-RI58/RI58LONP.PDF /PS La domanda per la misura uscita nella stampa di offset, separazione cmy0 (CMY0) TUB materiale: code=rh4ta



Data of Maximum color M in colorimetric system Offset standard print; separation cmy0*; D65 for input or output; Six hue angles of the 60 degree standard colours RYGBM_s: h_{ab,ds} = 30.0, 90.0, 150.0, 210.0, 270.0, 330.0;
Six hue angles of the device colours RYGBM_d: h_{ab,d} = 32.3, 96.1, 155.5, 238.4, 306.2, 359.8; Six hue angles of the elementary colours RYGBM_e: h_{ab,e} = 25.5, 92.3, 162.2, 217.0, 271.7, 328.6

Table with columns: h_{ab,d}, h_{ab,s}, h_{ab,e}, r_{gb}*_dd361M, LAB*_*_d361Mi (x=LabCh), r_{gb}*_ds361Mi, LAB*_*_s361Mi (x=LabCh), r_{gb}*_de361Mi, LAB*_*_e361Mi (x=LabCh), r_{gb}*_dd361Mi, LAB*_*_d361Mi, r_{gb}*_ds361Mi, LAB*_*_s361Mi, r_{gb}*_de361Mi, LAB*_*_e361Mi, r_{gb}*_dd361Mi, r_{gb}*_ds361Mi, r_{gb}*_de361Mi. Rows 366-392.

vedere dei file simili: http://130.149.60.45/~farbmetrik/RI58/RI58.HTM
informazioni tecniche: http://www.ps.bam.de o http://130.149.60.45/~farbmetrik

TUB iscrizione: 20130201-RI58/RI58LONP.PDF /.PS
La domanda per la misura uscita nella stampa di offset, separazione cmy0 (CMY0)
TUB materiale: code=rhatha



http://130.149.60.45/~farbmetrik/RI58/RI58LONP.PDF /.PS; uscita di trasferimento
N: nessun 3D-linearizzazione (OL) nel file (F) o PS-startup (S), pagina 18/33

Table with 30 columns: nuf, HHC*Fe, rgb*Fe, icr*Fe, Hs*Fe, LabC0*Fe, LabC1*Fe, LabC2*Fe, LabC3*Fe, LabC4*Fe, LabC5*Fe, LabC6*Fe, LabC7*Fe, LabC8*Fe, LabC9*Fe, LabC10*Fe, LabC11*Fe, LabC12*Fe, LabC13*Fe, LabC14*Fe, LabC15*Fe, LabC16*Fe, LabC17*Fe, LabC18*Fe, LabC19*Fe, LabC20*Fe, LabC21*Fe, LabC22*Fe, LabC23*Fe, LabC24*Fe, LabC25*Fe, LabC26*Fe, LabC27*Fe, LabC28*Fe, LabC29*Fe, LabC30*Fe. Rows include various color patches and their corresponding numerical values.

immettere: rgb/cmyk -> rgbe
uscita: trasferire a cmy0e

RI580-7N, 18/33-F

grafico TUB-RI58; 1080 colori standard
colori e la differenza, ΔE*

4-0131731-10
4-0131731-10



http://130.149.60.45/~farbmetrik/RI58/RI58LONP.PDF /.PS; uscita di trasferimento
N: nessun 3D-linearizzazione (OL) nel file (F) o PS-startup (S), pagina 20/33

grafico TUB-RI58; 1080 colori standard
colori e la differenza, ΔE*
immettere: rgb/cmyk -> rgbe
uscita: trasferire a cmy0e

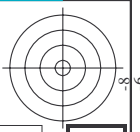
Table with 10 columns: n/F, H/C/Mc, r/g/b, i/c/t, h/s, r/g/b, Lab/C/M, r/g/b, Fe, Lab/C/M, r/g/b, Fe, Lab/C/M, r/g/b, Fe, Lab/C/M, r/g/b, Fe, Lab/C/M, r/g/b, Fe. It contains a dense grid of numerical data for 80 different color patches.



TUB iscrizione: 20130201-RI58/RI58LONP.PDF /.PS

TUB materiale: code=rha4ta

la domanda per la misura uscita nella stampa di offset, separazione cmy0 (CMY0)



http://130.149.60.45/~farbmetrik/RI58/RI58LONP.PDF /.PS; uscita di trasferimento N: nessun 3D-linearizzazione (OL) nel file (F) o PS-startup (S), pagina 2/133

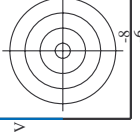
Table with 16 columns: n, HHC*Fe, rpb*Fe, iet*Fe, Hs*Fe, rpb*Fe, LabCH*Fe, LabCH*Fe, rpb*Fe, LabCH*Fe, DF*Fe, rpb*Fe, LabCH*Fe, rpb*Fe, LabCH*Fe, LabCH*Fe. Rows include various color codes like B00Y, B25K, B15K, etc.

immettere: rgb/cmyk -> rgbe uscita: trasferire a cmy0e

grafico TUB-RI58; 1080 colori standard colori e la differenza, ΔE*



vedere dei file simili: http://130.149.60.45/~farbmetrik/RI58/RI58.HTM informazioni tecniche: http://www.ps.bam.de o http://130.149.60.45/~farbmetrik



RI580IL

TUB iscrizione: 20130201-RI58/RI58LONP.PDF /.PS la domanda per la misura uscita nella stampa di offset, separazione cmy0 (CMY0)

TUB materiale: code=rha4ta

http://130.149.60.45/~farbmetrik/RI58/RI58LONP.PDF /.PS; uscita di trasferimento N: nessun 3D-linearizzazione (OL) nel file (F) o PS-startup (S), pagina 24/33

Table with 25 columns: n, HHC*, Fe, rpb, Fe, iet, Fe, Hs, Fe, rpb, Fe, LabCH*, Fe, rpb, Fe, LabCH*, Fe, DFe*, Fe, rpb, Fe, LabCH*, Fe, rpb, Fe. Rows 324-404.

immettere: rgb/cmyk -> rgbe uscita: trasferire a cmy0e

vedere dei file simili: http://130.149.60.45/~farbmetrik/RI58/RI58LONP.PDF /.PS informazioni tecniche: http://www.ps.bam.de o http://130.149.60.45/~farbmetrik

4-0132331-F0

RI580-7N, 24/33-F3

grafico TUB-RI58; 1080 colori standard colori e la differenza, ΔE*

http://130.149.60.45/~farbmetrik/RI58/RI58LONP.PDF /.PS; uscita di trasferimento N: nessun 3D-linearizzazione (OL) o PS-startup (S), pagina 25/33

Table with 405 rows and 14 columns (n, HHC*, RGB*, IET*, IHS*, RGB*, LAB*, DF*, RGB*, LAB*, HMC*, LAB*, RGB*, LAB*). Each row contains a series of numerical values for different color channels.

4-0132431-F0

RI5801L-7N, 2533-F

delta E* = 15.9

grafico TUB-RI58; 1080 colori standard colori e la differenza, ΔE*

immettere: rgb/cmyk -> rgbe uscita: trasferire a cmy0e

http://130.149.60.45/~farbmetrik/RI58/RI58LONP.PDF /.PS; uscita di trasferimento
N: nessun 3D-linearizzazione (OL) nel file (F) o PS-startup (S), pagina 28/33

Table with columns: n, HHC*Fe, rpb*Fe, icr*Fe, Hs*Fe, rpb*Fe, LabC*Fe, LabCH*Fe, LabCH*Fe, LabCH*Fe, DF*Fe, Hs*Fe, rpb*Fe, LabCH*Fe, LabCH*Fe. Rows list various color and grayscale patches.

RI5801-7N, 28/33-F

grafico TUB-RI58; 1080 colori standard
colori e la differenza, ΔE*

immettere: rgb/cmyk -> rgbe
uscita: trasferire a cmy0e

RI5801L

TUB iscrizione: 20130201-RI58/RI58LONP.PDF /PS TUB materiale: code=rha4ta
la domanda per la misura uscita nella stampa di offset, separazione cmy0 (CMY0)

Table with 27 columns: n, HHC*Fe, rpb*Fe, icr*Fe, Hs_Fe, rpb*Fe, LabC*Fe, LabCH*Fe, rpb*Fe, rpb*Fe, LabCH*Fe, DF*Fe, Ham*Fe, rpb*Fe, LabCH*Fe, LabCH*Fe, LabCH*Fe, LabCH*Fe, LabCH*Fe, LabCH*Fe, LabCH*Fe, LabCH*Fe, LabCH*Fe, LabCH*Fe, LabCH*Fe, LabCH*Fe, LabCH*Fe, LabCH*Fe, LabCH*Fe. The table contains a dense grid of numerical data for various color calibration patches.

http://130.149.60.45/~farbmetrik/RI58/RI58LONP.PDF /PS; uscita di trasferimento
N: nessun 3D-linearizzazione (OL) nel file (F) o PS-startup (S), pagina 30/33

immettere: rgb/cmyk -> rgbe
uscita: trasferire a cmy0e

vedere dei file simili: http://130.149.60.45/~farbmetrik/RI58/RI58LONP.PDF /PS
informazioni tecniche: http://www.ps.bam.de o http://130.149.60.45/~farbmetrik

4-0132931-F0

grafico TUB-RI58; 1080 colori standard
colori e la differenza, ΔE*

RI580-7N; 3033-F

delta E* = 12.1

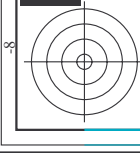


TUB iscrizione: 20130201-RI58/RI58LONP.PDF /PS TUB materiale: code=rha4ta
la domanda per la misura uscita nella stampa di offset, separazione cmy0 (CMY0)

http://130.149.60.45/~farbmetrik/RI58/RI58LONP.PDF /PS; uscita di trasferimento
N: nessun 3D-linearizzazione (OL) o PS-startup (S), pagina 31/33

Table with columns: n, HbC%Fe, rpb%Fe, iet%Fe, hsb%Fe, LabChP%Fe, rpb%Fe, LabChP%Fe, DF%Fe, HamE, LabChP%Fe, rpb%Fe, LabChP%Fe. Contains 90 rows of numerical data.

immettere: rgb/cmyk -> rgbe
uscita: trasferire a cmy0e



vedere dei file simili: http://130.149.60.45/~farbmetrik/RI58/RI58LONP.PDF /PS
informazioni tecniche: http://www.ps.bam.de o http://130.149.60.45/~farbmetrik

n	HC*Fe	rgb*Fe	ict*Fe	hsa*Fe	rgb*Fe	LabCIE*Fe	LabCIE*Fe	rgb*Fe	DF*Fe	HaM*E	rgb*Me	LabCIE*Me	00
1053	NW_086e	0.866	0.866	0.866	0.866	0.866	86.0	0.0	0.0	0.0	0.0	95.6	0.0
1054	NW_093e	0.933	0.933	0.933	0.933	0.933	90.8	0.0	0.0	0.0	0.0	95.6	0.0
1055	NW_100e	1.0	1.0	1.0	1.0	1.0	95.6	0.0	0.0	0.0	0.0	95.6	0.0
1056	NW_000e	0.0	0.0	0.0	0.0	0.0	24.3	0.0	0.0	0.0	0.0	95.6	0.0
1057	NW_006e	0.066	0.066	0.066	0.066	0.066	29.0	0.0	0.0	0.0	0.0	95.6	0.0
1058	NW_013e	0.133	0.133	0.133	0.133	0.133	33.8	0.0	0.0	0.0	0.0	95.6	0.0
1059	NW_020e	0.2	0.2	0.2	0.2	0.2	38.6	0.0	0.0	0.0	0.0	95.6	0.0
1060	NW_026e	0.266	0.266	0.266	0.266	0.266	43.3	0.0	0.0	0.0	0.0	95.6	0.0
1061	NW_033e	0.333	0.333	0.333	0.333	0.333	48.1	0.0	0.0	0.0	0.0	95.6	0.0
1062	NW_040e	0.4	0.4	0.4	0.4	0.4	52.8	0.0	0.0	0.0	0.0	95.6	0.0
1063	NW_046e	0.466	0.466	0.466	0.466	0.466	57.5	0.0	0.0	0.0	0.0	95.6	0.0
1064	NW_053e	0.533	0.533	0.533	0.533	0.533	62.3	0.0	0.0	0.0	0.0	95.6	0.0
1065	NW_060e	0.6	0.6	0.6	0.6	0.6	67.1	0.0	0.0	0.0	0.0	95.6	0.0
1066	NW_066e	0.666	0.666	0.666	0.666	0.666	71.8	0.0	0.0	0.0	0.0	95.6	0.0
1067	NW_073e	0.734	0.734	0.734	0.734	0.734	76.6	0.0	0.0	0.0	0.0	95.6	0.0
1068	NW_080e	0.8	0.8	0.8	0.8	0.8	81.3	0.0	0.0	0.0	0.0	95.6	0.0
1069	NW_086e	0.866	0.866	0.866	0.866	0.866	86.0	0.0	0.0	0.0	0.0	95.6	0.0
1070	NW_093e	0.933	0.933	0.933	0.933	0.933	90.8	0.0	0.0	0.0	0.0	95.6	0.0
1071	NW_100e	1.0	1.0	1.0	1.0	1.0	95.6	0.0	0.0	0.0	0.0	95.6	0.0
1072	NW_000e	0.0	0.0	0.0	0.0	0.0	24.3	0.0	0.0	0.0	0.0	95.6	0.0
1073	ROXY_100_100e	1.0	1.0	1.0	1.0	1.0	95.6	0.0	0.0	0.0	0.0	95.6	0.0
1074	ROXY_100_100e	1.0	1.0	1.0	1.0	1.0	95.6	0.0	0.0	0.0	0.0	95.6	0.0
1075	GS0B_100_100e	0.0	1.0	1.0	0.5	390	45.6	72.2	34.4	80.0	25.4	45.3	216.9
1076	Y06C_100_100e	1.0	1.0	0.0	1.0	0.5	210	-36.2	-27.2	45.3	216.9	45.3	216.9
1077	B06C_100_100e	0.0	0.0	1.0	1.0	0.5	210	36.2	27.2	45.3	216.9	45.3	216.9
1078	B08C_100_100e	0.0	1.0	1.0	1.0	0.5	240	40.2	1.2	10.9	40.6	40.6	40.6
1079	B50B_100_100e	1.0	0.0	1.0	1.0	0.5	350	50.6	92.1	19.9	45.2	45.2	45.2
							0.321	0.0	1.0	0.0	0.0	31.1	47.7
													328.6

delta E** = 10.3

http://130.149.60.45/~farbmetrik/RI58/RI58LONP.PDF /.PS; uscita di trasferimento
 N: nessun 3D-linearizzazione (OL) nel file (F) o PS-startup (S), pagina 33/33

immettere: rgb/cmyk -> rgbe
 uscita: trasferire a cmy0e