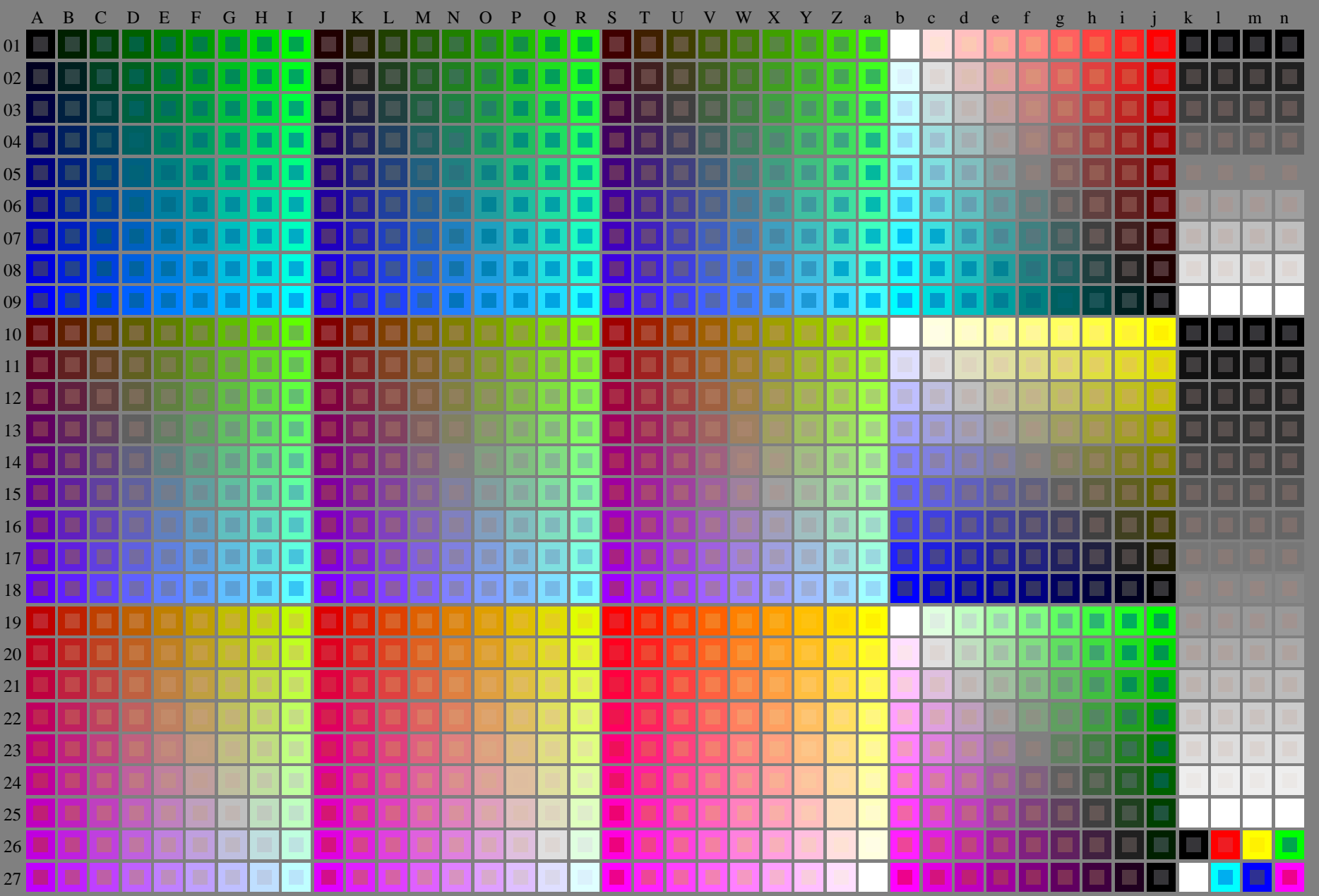


vedere dei file simili: <http://130.149.60.45/~farbmetrik/RI59/RI59.HTM>
informazioni tecniche: <http://www.ps.bam.de> o <http://130.149.60.45/~farbmetrik>

TUB iscrizione: 20130201-RI59/RI59L0FA.TXT /.PS
la domanda per la misura di uscita della stampante laser

TUB materiale: code=rh4ta

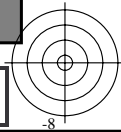
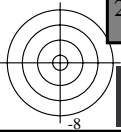


4-103030-L0 RI590-7N

rgb + cmy0 (A, j + k26, n27), 000n (k), w (l), nnn0 (m), www (n), 3D = 1

grafico TUB-RI59; 1080 colori standard
grafico conformemente a DIN 33872, 3D=1, de=0, cmyk*

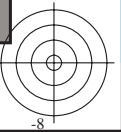
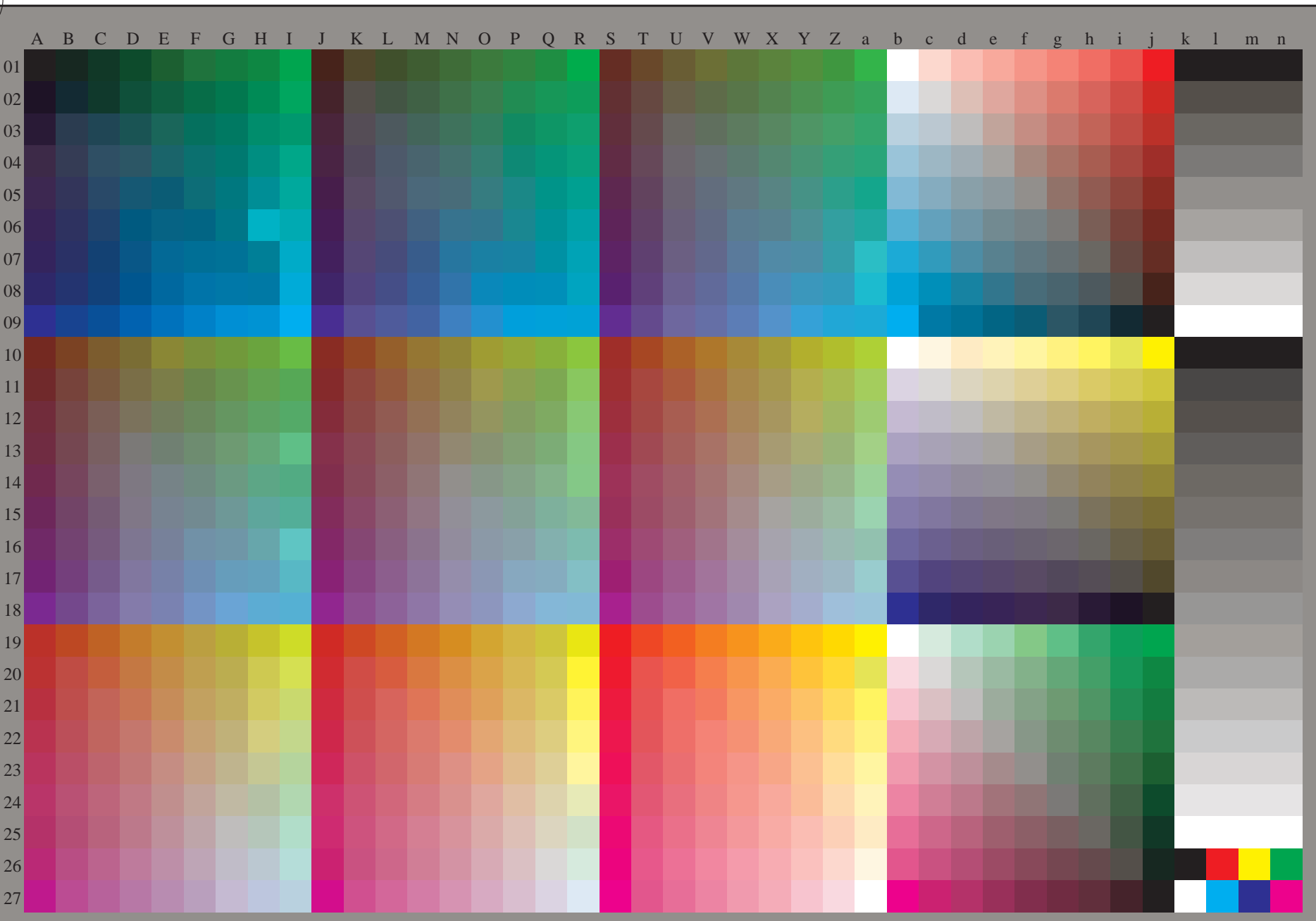
immettere: *rgb/cmyk* -> *rgb/cmyk*
uscita: nessun cambiamento





vedere dei file simili: <http://130.149.60.45/~farbmetrik/RI59/RI59.HTM>
informazioni tecniche: <http://www.ps.bam.de> o <http://130.149.60.45/~farbmetrik>

TUB iscrizione: 20130201-RI59/RI59L0FA.TXT /.PS
la domanda per la misura di uscita della stampante laser, separazione cmyⁿ6* (CMYK)
TUB materiale: code=rh4ta



4-103130-L0 RI590-72

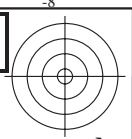
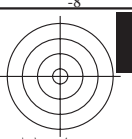
rgb (A_n), 3D=1

grafico TUB-RI59; 1080 colori standard
grafico conformemente a DIN 33872, 3D=1, de=0, cmyk*

immettere: *rgb/cmyk* -> *rgb_{dd}*
uscita: 3D-linearizzazione a *cmyk_{dd}**

4-103130-F0

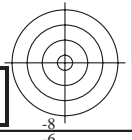
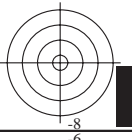
C M Y O L V



vedere dei file simili: <http://130.149.60.45/~farbmetrik/RI59/RI59.HTM>
informazioni tecniche: <http://www.ps.bam.de> o <http://130.149.60.45/~farbmetrik>

TUB iscrizione: 20130201-RI59/RI59L0FA.TXT /.PS
la domanda per la misura di uscita della stampante laser, separazione cmy_n6* (CMYK)

TUB materiale: code=rh4ta



4-103230-L0 RI590-72

grafico TUB-RI59; 1080 colori standard
grafico conformemente a DIN 33872, 3D=1, de=0, cmyk*

immettere: $rgb/cmyk \rightarrow rgb_{dd}$
uscita: 3D-linearizzazione a $cmyk^*_{dd}$

4-103230-F0

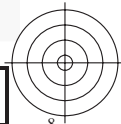
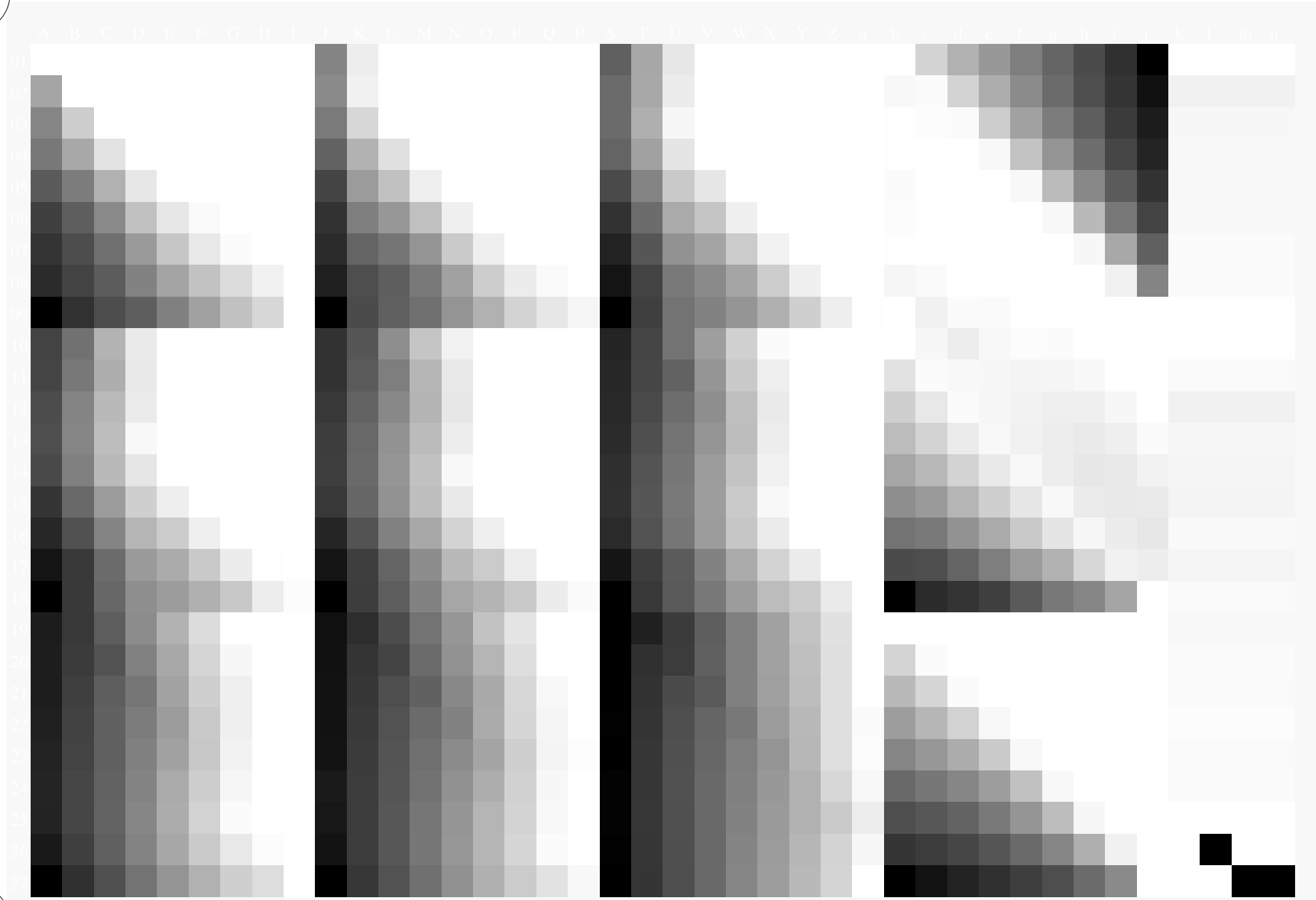




vedere dei file simili: <http://130.149.60.45/~farbmetrik/RI59/RI59.HTM>
informazioni tecniche: <http://www.ps.bam.de> o <http://130.149.60.45/~farbmetrik>

TUB iscrizione: 20130201-RI59/RI59L0FA.TXT /.PS
la domanda per la misura di uscita della stampante laser, separazione cmyk* (CMYK)

TUB materiale: code=rh4ta



4-103330-L0 RI590-72

grafico TUB-RI59; 1080 colori standard
grafico conformemente a DIN 33872, 3D=1, de=0, cmyk*

immettere: $rgb/cmyk \rightarrow rgb_{dd}$
uscita: 3D-linearizzazione a $cmyk^*_{dd}$

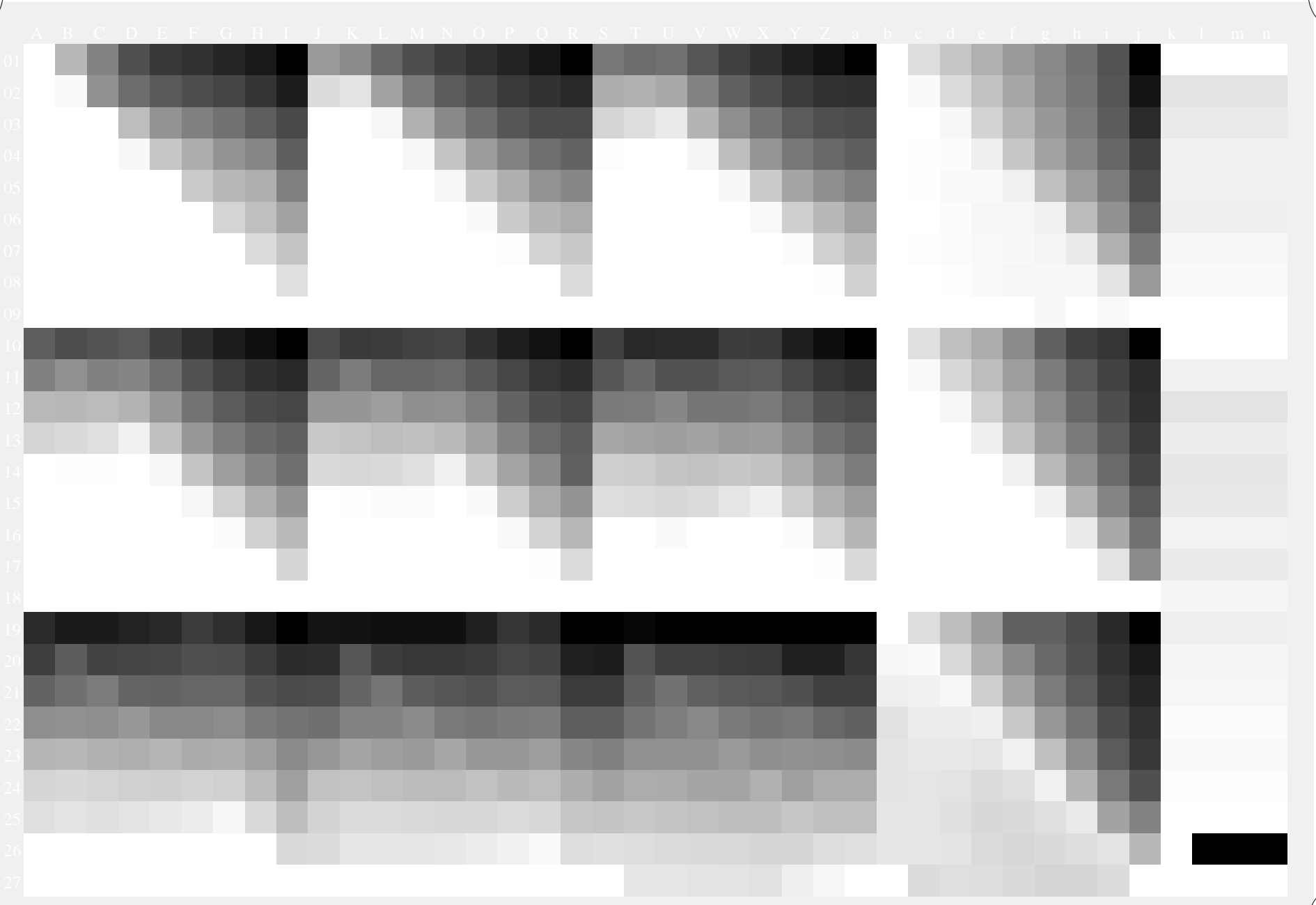
4-103330-F0



vedere dei file simili: <http://130.149.60.45/~farbmetrik/RI59/RI59.HTM>
informazioni tecniche: <http://www.ps.bam.de> o <http://130.149.60.45/~farbmetrik>

TUB iscrizione: 20130201-RI59/RI59L0FA.TXT /.PS
la domanda per la misura di uscita della stampante laser, separazione cmyk* (CMYK)

TUB materiale: code=rh4ta



4-103430-L0 RI590-72

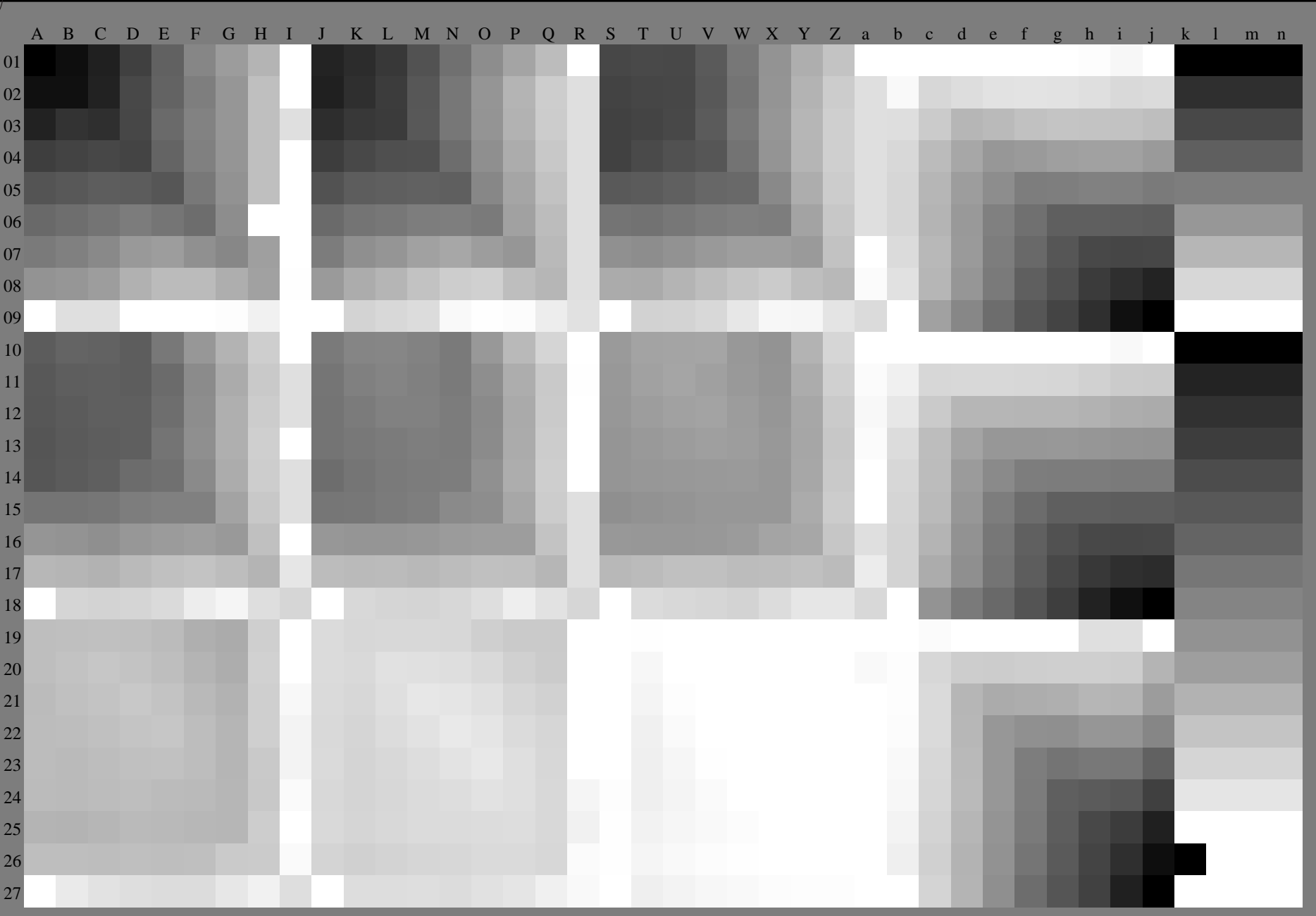
grafico TUB-RI59; 1080 colori standard
grafico conformemente a DIN 33872, 3D=1, de=0, cmyk*

immettere: $rgb/cmyk \rightarrow rgb_{dd}$
uscita: 3D-linearizzazione a $cmyk^*_{dd}$

4-103430-F0

vedere dei file simili: <http://130.149.60.45/~farbmetrik/RI59/RI59.HTM>
informazioni tecniche: <http://www.ps.bam.de> o <http://130.149.60.45/~farbmetrik>

TUB iscrizione: 20130201-RI59/RI59L0FA.TXT /.PS
la domanda per la misura di uscita della stampante laser, separazione cmyk6* (CMYK)
TUB materiale: code=rh4ta



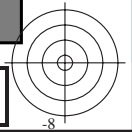
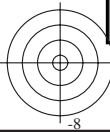
4-103530-L0 RI590-72

.3D=1

grafico TUB-RI59; 1080 colori standard
grafico conformemente a DIN 33872, 3D=1, de=0, cmyk*

immettere: *rgb/cmyk* -> *rgb_{dd}*
uscita: 3D-linearizzazione a *cmyk₆*_{dd}*

4-103530-F0

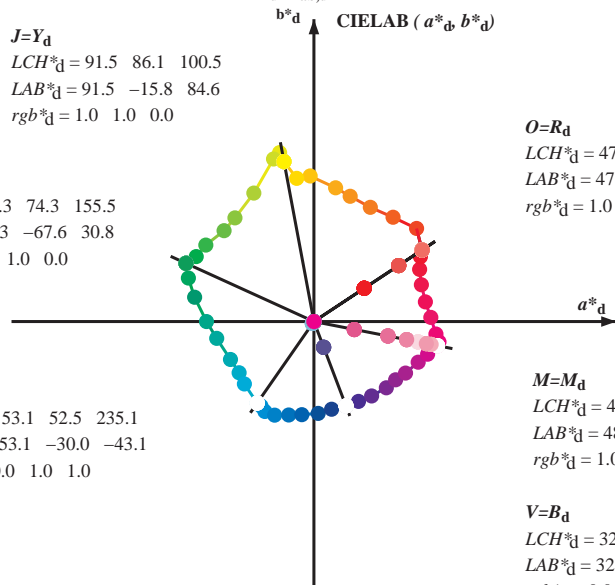


Data of Maximum color M in colorimetric system Laser printer output; separation cmy₆*, D65 for input or output; Six hue angles of the 60 degree standard colours RYGBM_s: $h_{ab,ds} = 30.0, 90.0, 150.0, 210.0, 270.0, 330.0$;
 Six hue angles of the device colours RYGBM_d: $h_{ab,d} = 33.5, 100.6, 155.5, 235.2, 290.8, 348.9$; Six hue angles of the elementary colours RYGBM_e: $h_{ab,e} = 25.5, 92.3, 162.2, 217.0, 271.7, 328.6$

$J=Y_d$
 $LCH^*_d = 91.5 \ 86.1 \ 100.5$
 $LAB^*_d = 91.5 \ -15.8 \ 84.6$
 $rgb^*_d = 1.0 \ 1.0 \ 0.0$

$L=G_d$
 $LCH^*_d = 54.3 \ 74.3 \ 155.5$
 $LAB^*_d = 54.3 \ -67.6 \ 30.8$
 $rgb^*_d = 0.0 \ 1.0 \ 0.0$

$C=C_d$
 $LCH^*_d = 53.1 \ 52.5 \ 235.1$
 $LAB^*_d = 53.1 \ -30.0 \ -43.1$
 $rgb^*_d = 0.0 \ 1.0 \ 1.0$



$O=R_d$
 $LCH^*_d = 47.5 \ 68.6 \ 33.4$
 $LAB^*_d = 47.5 \ 57.2 \ 37.8$
 $rgb^*_d = 1.0 \ 0.0 \ 0.0$

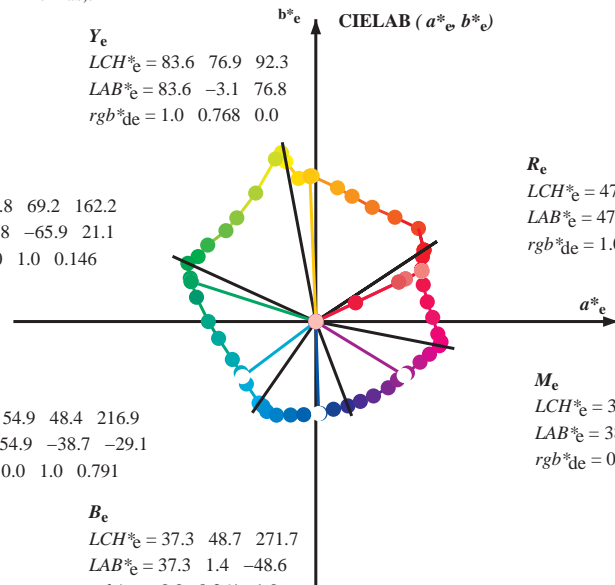
$M=M_d$
 $LCH^*_d = 48.1 \ 66.6 \ 348.9$
 $LAB^*_d = 48.1 \ 65.4 \ -12.7$
 $rgb^*_d = 1.0 \ 0.0 \ 1.0$

$V=B_d$
 $LCH^*_d = 32.5 \ 47.7 \ 290.8$
 $LAB^*_d = 32.5 \ 16.9 \ -44.6$
 $rgb^*_d = 0.0 \ 0.0 \ 1.0$

Y_e
 $LCH^*_e = 83.6 \ 76.9 \ 92.3$
 $LAB^*_e = 83.6 \ -3.1 \ 76.8$
 $rgb^*_{de} = 1.0 \ 0.768 \ 0.0$

G_e
 $LCH^*_e = 53.8 \ 69.2 \ 162.2$
 $LAB^*_e = 53.8 \ -65.9 \ 21.1$
 $rgb^*_{de} = 0.0 \ 1.0 \ 0.146$

C_e
 $LCH^*_e = 54.9 \ 48.4 \ 216.9$
 $LAB^*_e = 54.9 \ -38.7 \ -29.1$
 $rgb^*_{de} = 0.0 \ 1.0 \ 0.791$



R_e
 $LCH^*_e = 47.5 \ 62.1 \ 25.4$
 $LAB^*_e = 47.5 \ 56.0 \ 26.7$
 $rgb^*_{de} = 1.0 \ 0.0 \ 0.263$

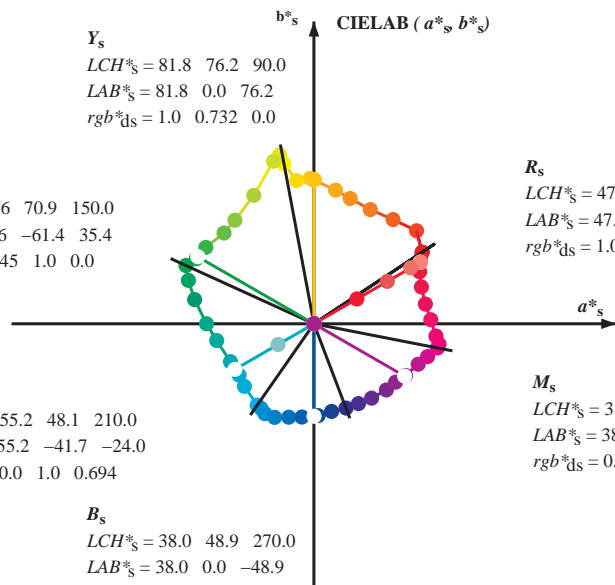
M_e
 $LCH^*_e = 38.5 \ 54.7 \ 328.6$
 $LAB^*_e = 38.5 \ 46.7 \ -28.5$
 $rgb^*_{de} = 0.584 \ 0.0 \ 1.0$

B_e
 $LCH^*_e = 37.3 \ 48.7 \ 271.7$
 $LAB^*_e = 37.3 \ 1.4 \ -48.6$
 $rgb^*_{de} = 0.0 \ 0.261 \ 1.0$

Y_s
 $LCH^*_s = 81.8 \ 76.2 \ 90.0$
 $LAB^*_s = 81.8 \ 0.0 \ 76.2$
 $rgb^*_{ds} = 1.0 \ 0.732 \ 0.0$

G_s
 $LCH^*_s = 57.6 \ 70.9 \ 150.0$
 $LAB^*_s = 57.6 \ -61.4 \ 35.4$
 $rgb^*_{ds} = 0.145 \ 1.0 \ 0.0$

C_s
 $LCH^*_s = 55.2 \ 48.1 \ 210.0$
 $LAB^*_s = 55.2 \ -41.7 \ -24.0$
 $rgb^*_{ds} = 0.0 \ 1.0 \ 0.694$



R_s
 $LCH^*_s = 47.6 \ 65.0 \ 30.0$
 $LAB^*_s = 47.6 \ 56.3 \ 32.5$
 $rgb^*_{ds} = 1.0 \ 0.0 \ 0.157$

M_s
 $LCH^*_s = 38.9 \ 55.3 \ 330.0$
 $LAB^*_s = 38.9 \ 47.9 \ -27.6$
 $rgb^*_{ds} = 0.612 \ 0.0 \ 1.0$

B_s
 $LCH^*_s = 38.0 \ 48.9 \ 270.0$
 $LAB^*_s = 38.0 \ 0.0 \ -48.9$
 $rgb^*_{ds} = 0.0 \ 0.283 \ 1.0$

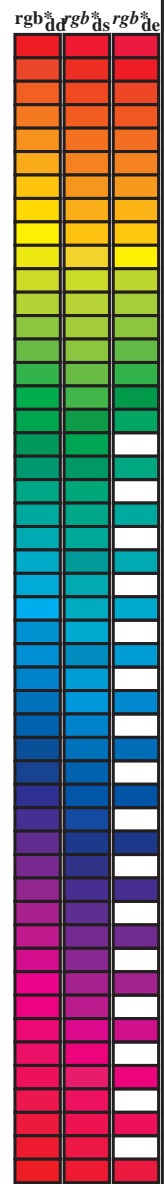
$(a^*_d, b^*_d), (a^*_s, b^*_s), (a^*_e, b^*_e)$
 $rgb^*_e LCH^*_s LAB^*_s$
 $h_{ab,s} rgb^*_s$
 $h_{ab,s} = atan [r^*_d cos(30) + g^*_d cos(150)] / [r^*_d sin(30) + g^*_d sin(150) + b^*_d sin(270)]$ (1)
 $h_{ab,s}$
 $s: h_{ab,s} = 30.0, 90.0, 150.0, 210.0, 270.0, 330.0, 390.0 (i=0,6)$
 $h_{48ab,sij} = h_{ab,si} + j [h_{ab,si+1} - h_{ab,si}] / 8 (i = 0, 1, \dots, 5; j = 0, 1, \dots, 7)$ (2)
 $h_{360ab,sij} = h_{ab,si} + j [h_{ab,si+1} - h_{ab,si}] / 60 (i = 0, 1, \dots, 5; j = 0, 1, \dots, 59)$ (3)
 $h_{ab,e}$
 $e: h_{ab,e} = 25.5, 92.3, 162.2, 217.0, 271.7, 328.6, 385.5 (i=0,6)$
 $h_{48ab,eij} = h_{ab,ei} + j [h_{ab,ei+1} - h_{ab,ei}] / 8 (i = 0, 1, \dots, 5; j = 0, 1, \dots, 7)$ (4)
 $h_{360ab,eij} = h_{ab,ei} + j [h_{ab,ei+1} - h_{ab,ei}] / 60 (i = 0, 1, \dots, 5; j = 0, 1, \dots, 59)$ (5)
 $h_{ab}, h_{ab,d}$
 rgb^*_d

vedere dei file simili: http://130.149.60.45/~farbmetrik/RI59/RI59.HTM
 informazioni tecniche: http://www.ps.bam.de o http://130.149.60.45/~farbmetrik

TUB iscrizione: 20130201-RI59/RI59L0FA.TXT /PS
 la domanda per la misura di uscita della stampante laser, separazione cmy₆* (CMYK)
 TUB materiale: code=rh4ta

Data of Maximum color M in colorimetric system Laser printer output; separation cmy⁶*, D65 for input or output; Six hue angles of the 60 degree standard colours RY⁶CBM_c: h_{ab,ds} = 30.0, 90.0, 150.0, 210.0, 270.0, 330.0;
Six hue angles of the device colours RY⁶CBM_d: h_{ab,d} = 33.5, 100.6, 155.5, 235.2, 290.8, 348.9; Six hue angles of the elementary colours RY⁶CBM_e: h_{ab,e} = 25.5, 92.3, 162.2, 217.0, 271.7, 328.6

h _{ab,d}	h _{ab,s}	h _{ab,e}	rgb* dd64M	LAB* ddx64M (x=LabCh)	rgb* dex361M	LAB* dex361M
33.4	30.0	25.4	1.0 0.0 0.0	47.5 57.2 37.8 68.6 33.4	1.0 0.0 0.263 47.6	56.1 26.7 62.1 25
42.1	37.5	33.8	1.0 0.125 0.0	51.9 54.3 49.2 73.2 42.1	1.0 0.0 0.012 47.6	57.2 37.5 68.4 33
52.8	45.0	42.1	1.0 0.25 0.0	58.2 41.8 55.1 69.2 52.8	1.0 0.125 0.0	52.0 54.3 49.2 73.3 42
63.7	52.5	50.5	1.0 0.375 0.0	64.6 29.8 60.4 67.3 63.7	1.0 0.216 0.0	56.6 45.2 53.9 70.3 49
73.8	60.0	58.8	1.0 0.5 0.0	70.5 19.2 66.2 69.0 73.8	1.0 0.32 0.0	61.8 35.2 58.4 68.2 58
80.7	67.5	67.2	1.0 0.625 0.0	74.9 11.4 70.7 71.6 80.7	1.0 0.412 0.0	66.4 26.9 62.3 67.9 66
91.5	75.0	75.6	1.0 0.75 0.0	82.9 -2.0 76.9 77.0 91.5	1.0 0.532 0.0	71.6 17.3 67.5 69.7 75
96.8	82.5	83.9	1.0 0.875 0.0	87.6 -9.0 75.7 76.3 96.8	1.0 0.655 0.0	76.9 8.4 72.5 73.0 83
100.5	90.0	92.3	1.0 1.0 0.0	91.5 -15.8 84.6 86.1 100.5	1.0 0.769 0.0	83.7 -3.0 76.8 76.9 92
101.4	97.5	101.0	0.875 1.0 0.0	92.8 -18.1 89.4 91.2 101.4	1.0 0.996 0.0	91.5 -15.5 84.4 85.8 100
103.9	105.0	109.7	0.75 1.0 0.0	90.1 -21.3 86.0 88.6 103.9	0.684 1.0 0.0	84.7 -27.5 76.7 81.5 109
115.0	112.5	118.5	0.625 1.0 0.0	79.9 -31.7 67.9 75.0 115.0	0.595 1.0 0.0	77.8 -34.4 65.0 73.6 117
127.3	120.0	127.2	0.5 1.0 0.0	70.9 -41.7 54.8 68.9 127.3	0.501 1.0 0.0	71.0 -41.6 54.9 68.9 127
134.7	127.5	136.0	0.375 1.0 0.0	66.5 -47.5 48.0 67.6 134.7	0.366 1.0 0.0	66.2 -48.2 47.6 67.8 135
144.7	135.0	144.7	0.25 1.0 0.0	60.6 -57.2 40.4 70.1 144.7	0.25 1.0 0.0	60.6 -57.1 40.5 70.1 144
151.0	142.5	153.4	0.125 1.0 0.0	57.0 -62.2 34.4 71.1 151.0	0.073 1.0 0.0	55.9 -64.4 33.0 72.5 152
155.5	150.0	162.2	0.0 1.0 0.0	54.3 -67.6 30.8 74.3 155.5	0.0 1.0 0.147 53.8	-65.9 21.1 69.3 162
160.8	157.5	169.0	0.0 1.0 0.125 53.8	-66.4 23.0 70.2 160.8	0.0 1.0 0.251 53.8	-63.0 12.7 64.4 168
168.5	165.0	175.9	0.0 1.0 0.25 53.7	-63.1 12.8 64.4 168.5	0.0 1.0 0.331 54.4	-59.3 4.2 59.5 175
179.9	172.5	182.7	0.0 1.0 0.375 54.7	-56.8 0.0 56.8 179.9	0.0 1.0 0.405 54.8	-55.6 -2.1 55.7 182
189.8	180.0	189.6	0.0 1.0 0.5 55.0	-51.4 -8.9 52.2 189.8	0.0 1.0 0.497 55.0	-51.5 -8.6 52.3 189
204.4	187.5	196.4	0.0 1.0 0.625 55.3	-44.1 -20.0 48.5 204.4	0.0 1.0 0.553 55.2	-48.6 -13.9 50.7 195
214.4	195.0	203.2	0.0 1.0 0.75 55.2	-39.5 -27.1 47.9 214.4	0.0 1.0 0.615 55.3	-44.7 -19.2 48.8 203
221.9	202.5	210.1	0.0 1.0 0.875 54.4	-36.7 -33.0 49.4 221.9	0.0 1.0 0.69 55.3	-41.8 -23.8 48.2 209
235.1	210.0	216.9	0.0 1.0 1.0 53.1	-30.0 -43.1 52.5 235.1	0.0 1.0 0.792 55.0	-38.6 -29.0 48.4 216
237.9	217.5	223.8	0.0 0.875 1.0 53.1	-27.9 -44.7 52.7 237.9	0.0 1.0 0.888 54.3	-36.1 -34.1 49.8 223
241.3	225.0	230.6	0.0 0.75 1.0 52.9	-25.9 -47.5 54.1 241.3	0.0 1.0 0.957 53.6	-32.5 -39.7 51.5 230
247.2	232.5	237.5	0.0 0.625 1.0 50.5	-20.8 -49.5 53.7 247.2	0.0 0.916 1.0 53.1	-28.6 -44.1 52.7 237
254.9	240.0	244.3	0.0 0.5 1.0 46.1	-13.3 -49.4 51.1 254.9	0.0 0.686 1.0 51.7	-23.3 -48.5 54.0 244
262.6	247.5	251.2	0.0 0.375 1.0 41.4	-6.3 -49.2 49.6 262.6	0.0 0.568 1.0 48.6	-17.2 -49.5 52.6 250
272.6	255.0	258.0	0.0 0.25 1.0 36.8	2.2 -48.5 48.6 272.6	0.0 0.449 1.0 44.2	-10.4 -49.4 50.6 258
281.4	262.5	264.8	0.0 0.125 1.0 35.0	9.4 -46.3 47.3 281.4	0.0 0.353 1.0 40.6	-4.7 -49.2 49.5 264
290.8	270.0	271.7	0.0 0.0 1.0 32.5	16.9 -44.6 47.7 290.8	0.0 0.261 1.0 37.3	1.5 -48.6 48.7 271
299.2	277.5	278.8	0.125 0.0 1.0 31.6	23.6 -42.2 48.4 299.2	0.0 0.169 1.0 35.7	7.0 -47.2 47.8 278
307.8	285.0	285.9	0.25 0.0 1.0 31.0	30.5 -39.3 49.8 307.8	0.0 0.065 1.0 33.9	13.1 -45.6 47.5 285
317.5	292.5	293.0	0.375 0.0 1.0 34.2	38.2 -35.0 51.8 317.5	0.026 0.0 1.0 32.4	18.4 -44.1 47.9 292
324.4	300.0	300.1	0.5 0.0 1.0 37.2	43.1 -30.8 53.0 324.4	0.139 0.0 1.0 31.5	24.4 -41.9 48.6 300
330.6	307.5	307.2	0.625 0.0 1.0 39.1	48.4 -27.2 55.6 330.6	0.235 0.0 1.0 31.1	29.8 -39.7 49.7 306
338.7	315.0	314.3	0.75 0.0 1.0 41.8	55.1 -21.4 59.1 338.7	0.335 0.0 1.0 33.2	35.8 -36.5 51.2 314
343.9	322.5	321.4	0.875 0.0 1.0 45.6	60.1 -17.3 62.6 343.9	0.439 0.0 1.0 35.8	40.8 -32.9 52.5 321
348.9	330.0	328.6	1.0 0.0 1.0 48.1	65.4 -12.7 66.6 348.9	0.584 0.0 1.0 38.5	46.8 -28.4 54.8 328
350.7	337.5	335.7	1.0 0.0 0.875 49.5	66.1 -10.7 67.0 350.7	0.696 0.0 1.0 40.7	52.3 -24.0 57.6 335
354.2	345.0	342.8	1.0 0.0 0.75 49.3	64.5 -6.5 64.8 354.2	0.848 0.0 1.0 44.9	59.1 -18.2 61.9 342
361.9	352.5	349.9	1.0 0.0 0.625 48.0	61.8 2.1 61.8 361.9	0.910 0.0 1.0 48.6	65.6 -12.1 66.8 349
370.0	360.0	357.0	1.0 0.0 0.5 47.8	58.9 10.4 59.9 370.0	1.0 0.0 0.828 49.5	65.6 -9.0 66.2 352
378.9	367.5	364.1	1.0 0.0 0.375 47.4	56.8 19.5 60.0 378.9	1.0 0.0 0.659 48.4	62.7 -0.1 62.7 359
386.2	375.0	371.2	1.0 0.0 0.25 47.5	55.9 27.5 62.3 386.2	1.0 0.0 0.519 47.8	59.5 9.2 60.2 368
391.3	382.5	378.3	1.0 0.0 0.125 47.6	56.3 34.2 65.9 391.3	1.0 0.0 0.408 47.5	57.6 17.1 60.0 376
393.4	390.0	385.4	1.0 0.0 0.0 47.5	57.2 37.8 68.6 393.4	1.0 0.0 0.263 47.6	56.1 26.7 62.1 385



vedere dei file simili: <http://130.149.60.45/~farbmetrik/RI59/RI59L0FA.TXT> / .PS
informazioni tecniche: <http://www.ps.bam.de> o <http://130.149.60.45/~farbmetrik>

TUB iscrizione: 20130201-RI59/RI59L0FA.TXT /.PS
la domanda per la misura di uscita della stampante laser, separazione cmy⁶* (CMYK)
TUB materiale: code=rh4ta

Data of Maximum color M in colorimetric system Laser printer output; separation cmy⁶*, D65 for input or output; Six hue angles of the 60 degree standard colours RY⁶CBM_s; h_{ab,ds} = 30.0, 90.0, 150.0, 210.0, 270.0, 330.0;

Six hue angles of the device colours RY⁶CBM_d; h_{ab,d} = 33.5, 100.6, 155.5, 235.2, 290.8, 348.9; Six hue angles of the elementary colours RY⁶CBM_e; h_{ab,e} = 25.5, 92.3, 162.2, 217.0, 271.7, 328.6

h _{ab,d}	h _{ab,s}	h _{ab,e}	rgb* _{dd361M}	LAB* _{ddx361Mi (x=LabCh)}	rgb* _{ds361Mi}	LAB* _{dsx361Mi (x=LabCh)}	rgb* _{dd361Mi}	LAB* _{de361Mi}	LAB* _{dex361Mi (x=LabCh)}	rgb* _{dd361Mi}	rgb* _{dd}	rgb* _{ds}	rgb* _{de}
127	120	127	0.5	1.0	0.0	70.9	-41.7	54.8	68.9	127	0.5	1.0	0.0
128	121	128	0.483	1.0	0.0	70.4	-42.6	53.9	68.7	128	0.483	1.0	0.0
129	122	129	0.466	1.0	0.0	69.8	-43.4	53.0	68.5	129	0.466	1.0	0.0
130	123	130	0.45	1.0	0.0	69.2	-44.2	52.1	68.3	130	0.45	1.0	0.0
131	124	131	0.433	1.0	0.0	68.6	-45.0	51.2	68.2	131	0.433	1.0	0.0
132	125	133	0.416	1.0	0.0	68.0	-45.7	50.3	68.0	132	0.416	1.0	0.0
133	126	134	0.4	1.0	0.0	67.4	-46.5	49.4	67.8	133	0.4	1.0	0.0
134	127	135	0.383	1.0	0.0	66.8	-47.2	48.5	67.7	134	0.383	1.0	0.0
135	128	136	0.366	1.0	0.0	66.1	-48.2	47.5	67.7	135	0.366	1.0	0.0
136	129	137	0.35	1.0	0.0	65.4	-49.5	46.6	68.1	136	0.35	1.0	0.0
138	130	138	0.333	1.0	0.0	64.6	-50.9	45.7	68.4	138	0.333	1.0	0.0
139	131	140	0.316	1.0	0.0	63.8	-52.2	44.7	68.7	139	0.316	1.0	0.0
140	132	141	0.3	1.0	0.0	63.0	-53.5	43.7	69.1	140	0.3	1.0	0.0
142	133	142	0.283	1.0	0.0	62.2	-54.7	42.6	69.4	142	0.283	1.0	0.0
143	134	143	0.266	1.0	0.0	61.4	-56.0	41.5	69.7	143	0.266	1.0	0.0
144	135	144	0.25	1.0	0.0	60.6	-57.2	40.4	70.1	144	0.25	1.0	0.0
145	136	145	0.233	1.0	0.0	60.1	-57.9	39.6	70.2	145	0.233	1.0	0.0
146	137	147	0.216	1.0	0.0	59.6	-58.6	38.9	70.3	146	0.216	1.0	0.0
147	138	148	0.2	1.0	0.0	59.1	-59.3	38.1	70.5	147	0.2	1.0	0.0
148	139	149	0.183	1.0	0.0	58.7	-59.9	37.3	70.6	148	0.183	1.0	0.0
148	140	150	0.166	1.0	0.0	58.2	-60.6	36.4	70.7	148	0.166	1.0	0.0
149	141	151	0.15	1.0	0.0	57.7	-61.2	35.6	70.9	149	0.15	1.0	0.0
150	142	152	0.133	1.0	0.0	57.2	-61.9	34.8	71.0	150	0.133	1.0	0.0
151	143	154	0.116	1.0	0.0	56.8	-62.5	34.1	71.3	151	0.116	1.0	0.0
151	144	155	0.1	1.0	0.0	56.4	-63.3	33.7	71.7	151	0.1	1.0	0.0
152	145	156	0.083	1.0	0.0	56.1	-64.0	33.2	72.1	152	0.083	1.0	0.0
153	146	157	0.066	1.0	0.0	55.7	-64.7	32.8	72.6	153	0.066	1.0	0.0
153	147	158	0.049	1.0	0.0	55.4	-65.5	32.3	73.0	153	0.049	1.0	0.0
154	148	159	0.033	1.0	0.0	55.0	-66.2	31.8	73.5	154	0.033	1.0	0.0
154	149	161	0.016	1.0	0.0	54.7	-66.9	31.3	73.9	154	0.016	1.0	0.0
155	150	162	0.0	1.0	0.0	54.3	-67.6	30.8	74.3	155	0.0	1.0	0.0
156	151	163	0.0	1.0	0.016	54.2	-67.5	29.7	73.8	156	0.0	1.0	0.017
156	152	164	0.0	1.0	0.033	54.2	-67.4	28.6	73.2	156	0.0	1.0	0.033
157	153	164	0.0	1.0	0.05	54.1	-67.2	27.6	72.7	157	0.0	1.0	0.05
158	154	165	0.0	1.0	0.066	54.0	-67.1	26.6	72.1	158	0.0	1.0	0.067
159	155	166	0.0	1.0	0.083	53.9	-66.9	25.5	71.6	159	0.0	1.0	0.083
159	156	167	0.0	1.0	0.1	53.9	-66.7	24.5	71.1	159	0.0	1.0	0.1
160	157	168	0.0	1.0	0.116	53.8	-66.5	23.5	70.5	160	0.0	1.0	0.117
161	158	169	0.0	1.0	0.133	53.8	-66.2	22.3	69.9	161	0.0	1.0	0.133
162	159	170	0.0	1.0	0.15	53.8	-65.8	20.8	69.1	162	0.0	1.0	0.15
163	160	171	0.0	1.0	0.166	53.8	-65.5	19.4	68.3	163	0.0	1.0	0.167
164	161	172	0.0	1.0	0.183	53.8	-65.0	18.1	67.5	164	0.0	1.0	0.183
165	162	173	0.0	1.0	0.2	53.8	-64.6	16.7	66.7	165	0.0	1.0	0.2
166	163	174	0.0	1.0	0.216	53.7	-64.1	15.4	66.0	166	0.0	1.0	0.217
167	164	175	0.0	1.0	0.233	53.7	-63.6	14.1	65.2	167	0.0	1.0	0.233
168	165	175	0.0	1.0	0.25	53.7	-63.1	12.8	64.4	168	0.0	1.0	0.25

4-1031130-L0 RI590-72 LAB*ta0, YN=0%, XYZnw=3.9, 4.1, 4.1, 84.7, 89.6, 93.9, LAB*nw=23.9, 0.0, 0.0, 95.8, 0.0, 0.0

uscita: Laser printer output; separation cmy⁶*, D65, pagina 12/33

grafico TUB-RI59; 1080 colori standard
 cerchio delle tinte a 48 passi; rgb-LabCh*tavole

immettere: rgb/cmyk -> rgb_{dd}
 uscita: 3D-linearizzazione a cmyk*_{dd}

vedere dei file simili: http://130.149.60.45/~farbmetrik/RI59/RI59.HTM
 informazioni tecniche: http://www.ps.bam.de o http://130.149.60.45/~farbmetrik

TUB iscrizione: 20130201-RI59/RI59L0FA.TXT /.PS
 la domanda per la misura di uscita della stampante laser, separazione cmy⁶* (CMYK)
 TUB materiale: code=rh4ta

Data of Maximum color M in colorimetric system Laser printer output; separation cmy6*, D65 for input or output; Six hue angles of the 60 degree standard colours RYGBM₆: h_{ab,ds} = 30.0, 90.0, 150.0, 210.0, 270.0, 330.0;

Six hue angles of the device colours RYGBM_d: h_{ab,d} = 33.5, 100.6, 155.5, 235.2, 290.8, 348.9; Six hue angles of the elementary colours RYGBM_e: h_{ab,e} = 25.5, 92.3, 162.2, 217.0, 271.7, 328.6

h _{ab,d}	h _{ab,s}	h _{ab,e}	rgb* dd361M	LAB* ddx361Mi (x=LabCh)	rgb* ds361Mi	LAB* dsx361Mi (x=LabCh)	rgb* dd361Mi	LAB* de361Mi	rgb* dex361Mi (x=LabCh)	rgb* dd361Mi	rgb* ds	rgb* de	
168	165	175	0.0	1.0	0.25	53.7	-63.1	12.8	64.4	168	0.0	1.0	0.25
170	166	176	0.0	1.0	0.266	53.9	-62.4	10.9	63.4	170	0.0	1.0	0.267
171	167	177	0.0	1.0	0.283	54.0	-61.7	9.1	62.4	171	0.0	1.0	0.283
173	168	178	0.0	1.0	0.3	54.1	-60.9	7.3	61.3	173	0.0	1.0	0.3
174	169	179	0.0	1.0	0.316	54.3	-60.1	5.6	60.3	174	0.0	1.0	0.317
176	170	180	0.0	1.0	0.333	54.4	-59.2	3.9	59.3	176	0.0	1.0	0.333
177	171	181	0.0	1.0	0.35	54.5	-58.2	2.3	58.3	177	0.0	1.0	0.35
179	172	182	0.0	1.0	0.366	54.7	-57.3	0.8	57.3	179	0.0	1.0	0.367
180	173	183	0.0	1.0	0.383	54.7	-56.5	-0.6	56.5	180	0.0	1.0	0.383
181	174	184	0.0	1.0	0.4	54.8	-55.8	-1.8	55.9	181	0.0	1.0	0.4
183	175	185	0.0	1.0	0.416	54.8	-55.2	-3.1	55.2	183	0.0	1.0	0.417
184	176	185	0.0	1.0	0.433	54.8	-54.5	-4.3	54.6	184	0.0	1.0	0.433
185	177	186	0.0	1.0	0.45	54.9	-53.7	-5.5	54.0	185	0.0	1.0	0.45
187	178	187	0.0	1.0	0.466	54.9	-53.0	-6.6	53.4	187	0.0	1.0	0.467
188	179	188	0.0	1.0	0.483	55.0	-52.2	-7.8	52.8	188	0.0	1.0	0.483
189	180	189	0.0	1.0	0.5	55.0	-51.4	-8.9	52.2	189	0.0	1.0	0.5
191	181	190	0.0	1.0	0.516	55.0	-50.6	-10.5	51.7	191	0.0	1.0	0.517
193	182	191	0.0	1.0	0.533	55.1	-49.7	-12.1	51.2	193	0.0	1.0	0.533
195	183	192	0.0	1.0	0.55	55.1	-48.8	-13.7	50.7	195	0.0	1.0	0.55
197	184	193	0.0	1.0	0.566	55.2	-47.8	-15.2	50.2	197	0.0	1.0	0.567
199	185	194	0.0	1.0	0.583	55.2	-46.8	-16.6	49.7	199	0.0	1.0	0.583
201	186	195	0.0	1.0	0.6	55.2	-45.8	-18.0	49.2	201	0.0	1.0	0.6
203	187	195	0.0	1.0	0.616	55.3	-44.7	-19.4	48.7	203	0.0	1.0	0.617
205	188	196	0.0	1.0	0.633	55.3	-43.8	-20.5	48.4	205	0.0	1.0	0.633
206	189	197	0.0	1.0	0.65	55.3	-43.3	-21.5	48.3	206	0.0	1.0	0.65
207	190	198	0.0	1.0	0.666	55.3	-42.7	-22.5	48.3	207	0.0	1.0	0.667
209	191	199	0.0	1.0	0.683	55.2	-42.1	-23.4	48.2	209	0.0	1.0	0.683
210	192	200	0.0	1.0	0.7	55.2	-41.5	-24.4	48.1	210	0.0	1.0	0.7
211	193	201	0.0	1.0	0.716	55.2	-40.8	-25.3	48.0	211	0.0	1.0	0.717
213	194	202	0.0	1.0	0.733	55.2	-40.2	-26.2	48.0	213	0.0	1.0	0.733
214	195	203	0.0	1.0	0.75	55.2	-39.5	-27.1	47.9	214	0.0	1.0	0.75
215	196	204	0.0	1.0	0.766	55.1	-39.2	-27.9	48.1	215	0.0	1.0	0.767
216	197	205	0.0	1.0	0.783	55.0	-38.8	-28.7	48.3	216	0.0	1.0	0.783
217	198	206	0.0	1.0	0.8	54.9	-38.5	-29.5	48.5	217	0.0	1.0	0.8
218	199	206	0.0	1.0	0.816	54.8	-38.1	-30.3	48.7	218	0.0	1.0	0.817
219	200	207	0.0	1.0	0.833	54.7	-37.7	-31.1	48.9	219	0.0	1.0	0.833
220	201	208	0.0	1.0	0.85	54.6	-37.3	-31.9	49.1	220	0.0	1.0	0.85
221	202	209	0.0	1.0	0.866	54.5	-36.9	-32.6	49.3	221	0.0	1.0	0.867
222	203	210	0.0	1.0	0.883	54.3	-36.4	-33.7	49.6	222	0.0	1.0	0.883
224	204	211	0.0	1.0	0.9	54.2	-35.6	-35.1	50.0	224	0.0	1.0	0.9
226	205	212	0.0	1.0	0.916	54.0	-34.8	-36.5	50.4	226	0.0	1.0	0.917
228	206	213	0.0	1.0	0.933	53.8	-33.9	-37.8	50.8	228	0.0	1.0	0.933
229	207	214	0.0	1.0	0.95	53.6	-33.0	-39.2	51.2	229	0.0	1.0	0.95
231	208	215	0.0	1.0	0.966	53.4	-32.0	-40.5	51.7	231	0.0	1.0	0.967
233	209	216	0.0	1.0	0.983	53.3	-31.0	-41.8	52.1	233	0.0	1.0	0.983
235	210	216	0.0	1.0	1.0	53.1	-30.0	-43.1	52.5	235	0.0	1.0	1.0

4-1031230-L0 RI590-72 LAB*ta0, YN=0%, XYZnw=3.9, 4.1, 4.1, 84.7, 89.6, 93.9, LAB*nw=23.9, 0.0, 0.0, 95.8, 0.0, 0.0

uscita: Laser printer output; separation cmy6*, D65, pagina 13/33

grafico TUB-RI59; 1080 colori standard
 cerchio delle tinte a 48 passi; rgb-LabCh*tavole

immettere: rgb/cmyk -> rgb_{dd}
 uscita: 3D-linearizzazione a cmyk*_{dd}

vedere dei file simili: http://130.149.60.45/~farbmetrik/RI59/RI59.HTM
 informazioni tecniche: http://www.ps.bam.de o http://130.149.60.45/~farbmetrik

TUB iscrizione: 20130201-RI59/RI59L0FA.TXT /.PS
 la domanda per la misura di uscita della stampante laser, separazione cmy6* (CMYK)
 TUB materiale: code=rh4ta

nrf	HC*Fid	rgb_Fid	icr_Fid	hsa_Fid	rgb*Fid	LabC*Fid	cmyp*_sep_Fid	hsa_Mid	rgb*_Mid	LabC*_Mid	delta
0/648	R00Y_100_100ad	1.0	0.0	0.0	0.0	0.0	0.0	390	1.0	1.0	0.0
1/657	R13Y_100_100ad	0.0	1.0	0.5	0.0	0.0	0.0	37	0.0	0.873	0.0005
2/666	R25Y_100_100ad	0.0	1.0	0.5	0.0	0.0	0.0	36	0.0	0.767	0.0
3/675	R35Y_100_100ad	0.0	1.0	0.5	0.0	0.0	0.0	42	0.0	0.632	0.0
4/684	R50Y_100_100ad	0.0	1.0	0.5	0.0	0.0	0.0	51	0.0	0.5	0.0
5/693	R63Y_100_100ad	0.0	1.0	0.5	0.0	0.0	0.0	58	0.0	0.367	0.0
6/702	R75Y_100_100ad	0.0	1.0	0.5	0.0	0.0	0.0	68	0.0	0.233	0.0001
7/711	R88Y_100_100ad	0.0	1.0	0.5	0.0	0.0	0.0	77	0.0	0.117	0.0
8/720	Y00G_100_100ad	1.0	0.0	0.0	1.0	0.0	0.0	89	1.0	1.0	0.0
9/639	Y13C_100_100ad	0.875	1.0	0.0	0.0	0.0	0.0	96	0.883	1.0	0.0
10/558	Y25C_100_100ad	0.75	1.0	0.0	0.0	0.0	0.0	102	0.766	1.0	0.0
11/477	Y38C_100_100ad	0.625	1.0	0.0	0.0	0.0	0.0	111	0.633	1.0	0.0
12/396	Y50G_100_100ad	0.5	1.0	0.0	0.0	0.0	0.0	119	0.5	1.0	0.0
13/315	Y63G_100_100ad	0.375	1.0	0.0	0.0	0.0	0.0	128	0.366	1.0	0.0
14/234	Y75G_100_100ad	0.25	1.0	0.0	0.0	0.0	0.0	137	0.233	1.0	0.0
15/153	Y88G_100_100ad	0.125	1.0	0.0	0.0	0.0	0.0	143	0.116	1.0	0.0
16/72	G00C_100_100ad	0.0	1.0	0.0	1.0	0.0	0.0	149	0.0	0.0	0.0
17/73	G13C_100_100ad	0.0	1.0	0.0	1.0	0.0	0.0	156	0.0	0.884	0.0
18/74	G25C_100_100ad	0.0	1.0	0.0	1.0	0.0	0.0	162	0.0	0.766	0.0
19/75	G38C_100_100ad	0.0	1.0	0.0	1.0	0.0	0.0	171	0.0	0.632	0.0
20/76	G50C_100_100ad	0.0	1.0	0.0	1.0	0.0	0.0	178	0.0	0.5	0.0
21/77	G63C_100_100ad	0.0	1.0	0.0	1.0	0.0	0.0	188	0.0	0.364	0.0
22/78	G75C_100_100ad	0.0	1.0	0.0	1.0	0.0	0.0	197	0.0	0.239	0.0
23/79	G88C_100_100ad	0.0	1.0	0.0	1.0	0.0	0.0	203	0.0	0.123	0.0001
24/70	C00B_100_100ad	0.0	1.0	0.0	0.0	1.0	0.0	210	0.0	1.0	0.0
25/71	C13B_100_100ad	0.0	1.0	0.0	0.0	1.0	0.0	216	0.0	0.883	0.0
26/62	C25B_100_100ad	0.0	1.0	0.0	0.0	1.0	0.0	222	0.0	0.766	0.0
27/53	C38B_100_100ad	0.0	1.0	0.0	0.0	1.0	0.0	231	0.0	0.633	0.0
28/44	C50B_100_100ad	0.0	1.0	0.0	0.0	1.0	0.0	240	0.0	0.5	0.0
29/35	C63B_100_100ad	0.0	1.0	0.0	0.0	1.0	0.0	248	0.0	0.366	0.0
30/26	C75B_100_100ad	0.0	1.0	0.0	0.0	1.0	0.0	257	0.0	0.233	0.0
31/17	C88B_100_100ad	0.0	1.0	0.0	0.0	1.0	0.0	263	0.0	0.116	0.0
32/8	B00M_100_100ad	0.0	1.0	0.0	0.0	0.0	1.0	270	0.0	0.0	0.0
33/89	B13M_100_100ad	0.125	0.0	1.0	0.0	0.0	1.0	276	0.116	0.0	0.0
34/170	B25M_100_100ad	0.25	0.0	1.0	0.0	0.0	1.0	282	0.233	0.0	0.0
35/251	B38M_100_100ad	0.375	0.0	1.0	0.0	0.0	1.0	291	0.366	0.0	0.0
36/332	B50M_100_100ad	0.5	0.0	1.0	0.0	0.0	1.0	300	0.5	0.0	0.0
37/413	B63M_100_100ad	0.625	0.0	1.0	0.0	0.0	1.0	308	0.633	0.0	0.0
38/494	B75M_100_100ad	0.75	0.0	1.0	0.0	0.0	1.0	317	0.766	0.0	0.0
39/575	B88M_100_100ad	0.875	0.0	1.0	0.0	0.0	1.0	323	0.883	0.0	0.0
40/656	M00R_100_100ad	1.0	0.0	1.0	0.0	0.0	0.0	330	1.0	0.0	0.0
41/655	M13R_100_100ad	0.0	0.0	0.875	1.0	0.0	0.0	336	0.0	0.883	0.0
42/654	M25R_100_100ad	1.0	0.0	0.75	1.0	0.0	0.0	342	1.0	0.766	0.0
43/653	M38R_100_100ad	1.0	0.0	0.625	1.0	0.0	0.0	351	1.0	0.633	0.0
44/652	M50R_100_100ad	1.0	0.0	0.5	1.0	0.0	0.0	360	1.0	0.5	0.0
45/651	M63R_100_100ad	1.0	0.0	0.375	1.0	0.0	0.0	368	1.0	0.366	0.0
46/650	M75R_100_100ad	1.0	0.0	0.25	1.0	0.0	0.0	377	1.0	0.233	0.0
47/649	M88R_100_100ad	1.0	0.0	0.125	1.0	0.0	0.0	383	1.0	0.116	0.0
48/648	R00Y_100_100ad	1.0	0.0	0.0	1.0	0.0	0.0	389	1.0	0.0	0.0
49/0	NV_000ad	0.0	0.0	0.0	0.0	0.0	0.0	390	1.0	0.0	0.0
50/91	NV_013ad	0.125	0.0	0.0	0.0	0.0	0.0	360	0.0	0.116	0.0
51/182	NV_025ad	0.25	0.0	0.0	0.0	0.0	0.0	360	0.0	0.233	0.0
52/273	NV_038ad	0.375	0.0	0.0	0.0	0.0	0.0	360	0.0	0.5	0.0
53/364	NV_050ad	0.5	0.0	0.0	0.0	0.0	0.0	360	0.0	0.632	0.0
54/455	NV_063ad	0.625	0.0	0.0	0.0	0.0	0.0	360	0.0	0.766	0.0
55/546	NV_075ad	0.75	0.0	0.0	0.0	0.0	0.0	360	0.0	0.883	0.0
56/637	NV_088ad	0.875	0.0	0.0	0.0	0.0	0.0	360	0.0	1.0	0.0
57/728	NV_100ad	1.0	0.0	0.0	0.0	0.0	0.0	360	0.0	1.0	0.0

immettere: rgb/cmyk -> rgbd
uscita: 3D-linearizzazione a cmyk*dd

grafico TUB-RI59; 1080 colori standard
colori e la differenza, ΔE^*

RI590-7N_18/33-F

4-1031730-F0

4-1031730-F0

http://130.149.60.45/~farbmetrik/RI59/RI59L0FA.TXT /.PS; 3D-linearizzazione
F: 3D-linearizzazione RI59/RI59L30FA.DAT nel file (F), pagina 19/33

nif	HC*Fid	rgp_Fid	icr_Fid	hsa_Fid	rgp*Fid	LabCh*Fid	cmyn*_sep_Fid	rgp**Fid	hsa**Fid	LabCh**Fid	delta
0/648	ROXY_100_1000d	1.0	0.0	0.0	0.0	0.0	0.0	1.0	0.0	0.0	0.0
1/668	R25Y_100_1000d	0.0	0.5	0.5	0.0	57.5	0.0	0.0	389	57.5	37.8
2/684	R50Y_100_1000d	0.0	0.5	0.5	0.0	47.5	0.0	0.0	389	47.5	37.8
3/702	R75Y_100_1000d	0.0	0.5	0.5	0.0	37.5	0.0	0.0	389	37.5	37.8
4/720	Y00C_100_1000d	0.0	0.5	0.5	0.0	0.0	0.0	0.0	389	0.0	0.0
5/738	Y25C_100_1000d	0.0	0.5	0.5	0.0	0.0	0.0	0.0	389	0.0	0.0
6/756	Y50C_100_1000d	0.0	0.5	0.5	0.0	0.0	0.0	0.0	389	0.0	0.0
7/774	Y75C_100_1000d	0.0	0.5	0.5	0.0	0.0	0.0	0.0	389	0.0	0.0
8/792	CO0B_100_1000d	0.0	0.5	0.5	0.0	0.0	0.0	0.0	389	0.0	0.0
9/772	CO0B_100_1000d	0.0	0.5	0.5	0.0	0.0	0.0	0.0	389	0.0	0.0
10/776	G25B_100_1000d	0.0	0.5	0.5	0.0	54.5	0.0	0.0	389	54.5	37.8
11/780	G50B_100_1000d	0.0	0.5	0.5	0.0	44.5	0.0	0.0	389	44.5	37.8
12/444	G75B_100_1000d	0.0	0.5	0.5	0.0	34.5	0.0	0.0	389	34.5	37.8
13/8	B00M_100_1000d	0.0	0.5	0.5	0.0	0.0	0.0	0.0	389	0.0	0.0
14/332	B25R_100_1000d	0.5	0.0	0.0	0.0	37.5	0.0	0.0	389	37.5	37.8
15/656	B50R_100_1000d	0.0	0.5	0.5	0.0	0.0	0.0	0.0	389	0.0	0.0
16/652	B75R_100_1000d	0.0	0.5	0.5	0.0	0.0	0.0	0.0	389	0.0	0.0
17/648	ROXY_100_1000d	1.0	0.0	0.0	0.0	0.0	0.0	0.0	389	0.0	0.0
18/688	ROXY_100_0500d	1.0	0.5	0.5	0.0	28.6	0.0	0.0	389	28.6	37.8
19/706	R50Y_100_0500d	0.0	0.5	0.5	0.0	18.9	0.0	0.0	389	18.9	37.8
20/724	R50Y_100_0500d	0.0	0.5	0.5	0.0	9.6	0.0	0.0	389	9.6	37.8
21/400	Y00C_100_0500d	0.5	0.0	0.0	0.0	0.0	0.0	0.0	389	0.0	0.0
22/400	Y25C_100_0500d	0.5	0.0	0.0	0.0	0.0	0.0	0.0	389	0.0	0.0
23/400	Y50C_100_0500d	0.5	0.0	0.0	0.0	0.0	0.0	0.0	389	0.0	0.0
24/400	Y75C_100_0500d	0.5	0.0	0.0	0.0	0.0	0.0	0.0	389	0.0	0.0
25/692	B50R_100_0500d	0.0	0.5	0.5	0.0	0.0	0.0	0.0	389	0.0	0.0
26/688	ROXY_100_0500d	1.0	0.5	0.5	0.0	28.6	0.0	0.0	389	28.6	37.8
27/506	ROXY_075_0500d	0.75	0.25	0.25	0.0	53.7	0.0	0.0	389	53.7	37.8
28/524	R50Y_075_0500d	0.75	0.25	0.25	0.0	43.7	0.0	0.0	389	43.7	37.8
29/542	Y00C_075_0500d	0.75	0.25	0.25	0.0	0.0	0.0	0.0	389	0.0	0.0
30/380	Y50C_075_0500d	0.5	0.5	0.5	0.0	0.0	0.0	0.0	389	0.0	0.0
31/218	CO0B_075_0500d	0.25	0.75	0.75	0.0	0.0	0.0	0.0	389	0.0	0.0
32/222	G50B_075_0500d	0.25	0.75	0.75	0.0	0.0	0.0	0.0	389	0.0	0.0
33/186	BO0R_075_0500d	0.25	0.75	0.75	0.0	0.0	0.0	0.0	389	0.0	0.0
34/510	B50R_075_0500d	0.75	0.25	0.25	0.0	0.0	0.0	0.0	389	0.0	0.0
35/506	ROXY_075_0500d	0.75	0.25	0.25	0.0	28.6	0.0	0.0	389	28.6	37.8
36/324	ROXY_050_0500d	0.5	0.0	0.0	0.0	35.7	0.0	0.0	389	35.7	37.8
37/342	R50Y_050_0500d	0.5	0.5	0.5	0.0	25.7	0.0	0.0	389	25.7	37.8
38/360	Y00C_050_0500d	0.5	0.5	0.5	0.0	0.0	0.0	0.0	389	0.0	0.0
39/198	Y50C_050_0500d	0.25	0.5	0.5	0.0	0.0	0.0	0.0	389	0.0	0.0
40/36	CO0B_050_0500d	0.0	0.5	0.5	0.0	0.0	0.0	0.0	389	0.0	0.0
41/40	G50B_050_0500d	0.0	0.5	0.5	0.0	0.0	0.0	0.0	389	0.0	0.0
42/4	BO0R_050_0500d	0.0	0.5	0.5	0.0	0.0	0.0	0.0	389	0.0	0.0
43/328	B50R_050_0500d	0.5	0.0	0.0	0.0	0.0	0.0	0.0	389	0.0	0.0
44/324	ROXY_050_0500d	0.5	0.0	0.0	0.0	0.0	0.0	0.0	389	0.0	0.0
45/0	NW_0000d	0.0	0.0	0.0	0.0	0.0	0.0	0.0	360	0.0	0.0
46/91	NW_0150d	0.125	0.125	0.125	0.0	32.8	0.0	0.0	360	32.8	37.8
47/182	NW_0250d	0.25	0.25	0.25	0.0	22.8	0.0	0.0	360	22.8	37.8
48/375	NW_0380d	0.375	0.375	0.375	0.0	12.8	0.0	0.0	360	12.8	37.8
49/364	NW_0500d	0.5	0.5	0.5	0.0	0.0	0.0	0.0	360	0.0	0.0
50/455	NW_0650d	0.625	0.625	0.625	0.0	0.0	0.0	0.0	360	0.0	0.0
51/456	NW_0800d	0.75	0.75	0.75	0.0	0.0	0.0	0.0	360	0.0	0.0
52/678	NW_0880d	0.875	0.875	0.875	0.0	0.0	0.0	0.0	360	0.0	0.0
53/728	NW_1000d	1.0	1.0	1.0	0.0	0.0	0.0	0.0	360	0.0	0.0

immettere: rgb/cmyk -> rgbd
uscita: 3D-linearizzazione a cmyk*dd

grafico TUB-RI59; 1080 colori standard
colori e la differenza, ΔE*

RI590-7N_19/33-F

4-1031830-F0

http://130.149.60.45/~farbmetrik/RI59/RI59LOFA.TXT /PS; 3D-linearizzazione
F: 3D-linearizzazione RI59/RI59L30FA.DAT nel file (F), pagina 21/33

Table with 16 columns: n, HHC*Fid, rpb_Fid, icr_Fid, hsa_Fid, rpb*Fid, LabCM*Fid, cmyk*_sep, Fud, rpb*Fid, hsa*Fid, delta, LabCM*Fid, rpb*Fid, hsa*Fid, delta. Rows 81-161.

immettere: rgb/cmyk -> rgbd
uscita: 3D-linearizzazione a cmyk*dd

grafico TUB-RI59; 1080 colori standard
colori e la differenza, ΔE*

RI590-7N; 21/33-F

4-1032030-F0

http://130.149.60.45/~farbmetrik/RI59/RI59L0FA.TXT /.PS; 3D-linearizzazione
F: 3D-linearizzazione RI59/RI59L30FA.DAT nel file (F), pagina 22/33

Table with columns: n, HHC*Fid, rpb_Fid, icr_Fid, hsa_Fid, rpb*Fid, LabCH*Fid, cmyk*_sep,Fid, rpb*Fid, hsa*Fid, LabCH*Fid, delta. Rows 162-242.

RI590-7N, 2233-F

grafico TUB-RI59; 1080 colori standard
colori e la differenza, ΔE*

immettere: rgb/cmyk -> rgbd
uscita: 3D-linearizzazione a cmyk*dd

http://130.149.60.45/~farbmetrik/RI59/RI59LOFA.TXT /PS; 3D-linearizzazione
F: 3D-linearizzazione RI59/RI59L30FA.DAT nel file (F), pagina 23/33

Table with columns: n, HHC*Fid, rpb_Fid, icr_Fid, hsa_Fid, rpb*Fid, LabCm*Fid, cmyk*_sep,Fid, LabCm*_Fid, delta, hsa*Fid, rpb*Fid, LabCm*_Fid, LabCm*_Fid. It contains a large grid of numerical data for various color calibration patches.

immettere: rgb/cmyk -> rgbd
uscita: 3D-linearizzazione a cmyk*dd

grafico TUB-RI59; 1080 colori standard
colori e la differenza, ΔE*

http://130.149.60.45/~farbmetrik/RI59/RI59LOFA.TXT /PS; 3D-linearizzazione
F: 3D-linearizzazione RI59/RI59L30FA.DAT nel file (F), pagina 25/33

Table with 10 columns: n, HHC*Fid, rpb_Fid, icr_Fid, hsa_Fid, rpb*Fid, LabCM*Fid, cmyk*_sep,Fid, Hsa*Fid, LabCM*Fid, delta. Rows include color codes like R00Y, R00M, R00C, etc.

immettere: rgb/cmyk -> rgbd
uscita: 3D-linearizzazione a cmyk*dd

immettere: rgb/cmyk -> rgbd
uscita: 3D-linearizzazione a cmyk*dd

Table with 14 columns: n, HIC*Fid, rpb_Fid, icr_Fid, hsa_Fid, rpb*Fid, LabCh*Fid, cmyk*_sep, cmyk*_Fid, rpb**Fid, hsa**Fid, LabCh**Fid, delta. Rows correspond to color patches from 486 to 566.

http://130.149.60.45/~farbmetrik/RI59/RI59LOFA.TXT / PS; 3D-linearizzazione
F: 3D-linearizzazione RI59/RI59L30FA.DAT nel file (F), pagina 27/33

Table with columns: n, HHC*Fid, rpb_Fid, icr_Fid, hsa_Fid, rpb*Fid, LabCM*Fid, cmyk*_sep,Fid, rpb**Fid, LabCM**Fid, rpb**Fid, LabCM**Fid, delta. Rows 567-647.

grafico TUB-RI59; 1080 colori standard
colori e la differenza, ΔE*

immettere: rgb/cmyk -> rgbd
uscita: 3D-linearizzazione a cmyk*dd

http://130.149.60.45/~farbmetrik/RI59/RI59LOFA.TXT /.PS; 3D-linearizzazione
F: 3D-linearizzazione RI59/RI59L30FA.DAT nel file (F), pagina 31/33

Table with columns: n, HIC*Fid, rpb_Fid, icr_Fid, hsa_Fid, rpb*Fid, LabC*Fid, cmyk*_sep,Fid, hsa*Fid, rpb*Fid, LabC*Fid, delta. Rows contain data for various color patches and printing conditions.

grafico TUB-RI59; 1080 colori standard
colori e la differenza, ΔE*

immettere: rgb/cmyk -> rgbd
uscita: 3D-linearizzazione a cmyk*dd

n	HC*Fid	rgb_Fid	icr_Fid	hsa_Fid	rgb*Fid	LabC*Fid	cmyp*_sep_Fid	cmyp*_sep_Fid	cmyp*_sep_Fid	hsa_did	rgb*_did	LabC*_did	delta
1053	NW_0860ad	0.866	0.866	0.866	0.866	0.866	0.0	0.019	0.02	0.164	0.005	0.005	0.0
1054	NW_0975ad	0.933	0.933	0.933	0.933	0.933	0.0	0.016	0.005	0.103	0.005	0.005	0.0
1055	NW_1000ad	1.0	1.0	1.0	1.0	1.0	0.0	0.0	0.0	0.0	0.0	0.0	0.0
1056	NW_1000ad	0.0	0.0	0.0	0.0	0.0	0.0	0.0	0.0	0.0	0.0	0.0	0.0
1057	NW_1000ad	0.066	0.066	0.066	0.066	0.066	0.0	0.005	0.054	0.865	0.054	0.054	0.0
1058	NW_0133ad	0.133	0.133	0.133	0.133	0.133	0.0	0.034	0.068	0.76	0.034	0.034	0.0
1059	NW_0266ad	0.266	0.266	0.266	0.266	0.266	0.0	0.039	0.092	0.701	0.039	0.039	0.0
1060	NW_0333ad	0.333	0.333	0.333	0.333	0.333	0.0	0.044	0.109	0.652	0.044	0.044	0.0
1061	NW_0466ad	0.466	0.466	0.466	0.466	0.466	0.0	0.038	0.078	0.608	0.038	0.038	0.0
1062	NW_0533ad	0.533	0.533	0.533	0.533	0.533	0.0	0.023	0.048	0.539	0.023	0.023	0.0
1063	NW_0533ad	0.4	0.4	0.4	0.4	0.4	0.0	0.028	0.064	0.482	0.028	0.028	0.0
1064	NW_0533ad	0.533	0.533	0.533	0.533	0.533	0.0	0.017	0.04	0.427	0.017	0.017	0.0
1065	NW_0666ad	0.666	0.666	0.666	0.666	0.666	0.0	0.015	0.038	0.381	0.015	0.015	0.0
1066	NW_0666ad	0.6	0.6	0.6	0.6	0.6	0.0	0.017	0.033	0.301	0.017	0.017	0.0
1067	NW_0734ad	0.734	0.734	0.734	0.734	0.734	0.0	0.001	0.011	0.23	0.001	0.001	0.0
1068	NW_0866ad	0.866	0.866	0.866	0.866	0.866	0.0	0.019	0.02	0.164	0.019	0.019	0.0
1069	NW_0866ad	0.866	0.866	0.866	0.866	0.866	0.0	0.016	0.005	0.103	0.016	0.016	0.0
1070	NW_0975ad	0.933	0.933	0.933	0.933	0.933	0.0	0.0	0.0	0.0	0.0	0.0	0.0
1071	NW_1000ad	1.0	1.0	1.0	1.0	1.0	0.0	0.0	0.0	0.0	0.0	0.0	0.0
1072	NW_1000ad	0.0	0.0	0.0	0.0	0.0	0.0	0.0	0.0	0.0	0.0	0.0	0.0
1073	ROY_100_100ad	1.0	1.0	1.0	1.0	1.0	0.0	0.0	0.0	0.0	0.0	0.0	0.0
1074	ROY_100_100ad	0.0	0.0	0.0	0.0	0.0	0.0	0.0	0.0	0.0	0.0	0.0	0.0
1075	GY0B_100_100ad	0.0	0.0	0.0	0.0	0.0	0.0	0.0	0.0	0.0	0.0	0.0	0.0
1076	GY0B_100_100ad	1.0	1.0	1.0	1.0	1.0	0.0	0.0	0.0	0.0	0.0	0.0	0.0
1077	BY0B_100_100ad	0.0	0.0	0.0	0.0	0.0	0.0	0.0	0.0	0.0	0.0	0.0	0.0
1078	BY0B_100_100ad	1.0	1.0	1.0	1.0	1.0	0.0	0.0	0.0	0.0	0.0	0.0	0.0
1079	BY0B_100_100ad	0.0	0.0	0.0	0.0	0.0	0.0	0.0	0.0	0.0	0.0	0.0	0.0
1079	BY0B_100_100ad	1.0	1.0	1.0	1.0	1.0	0.0	0.0	0.0	0.0	0.0	0.0	0.0

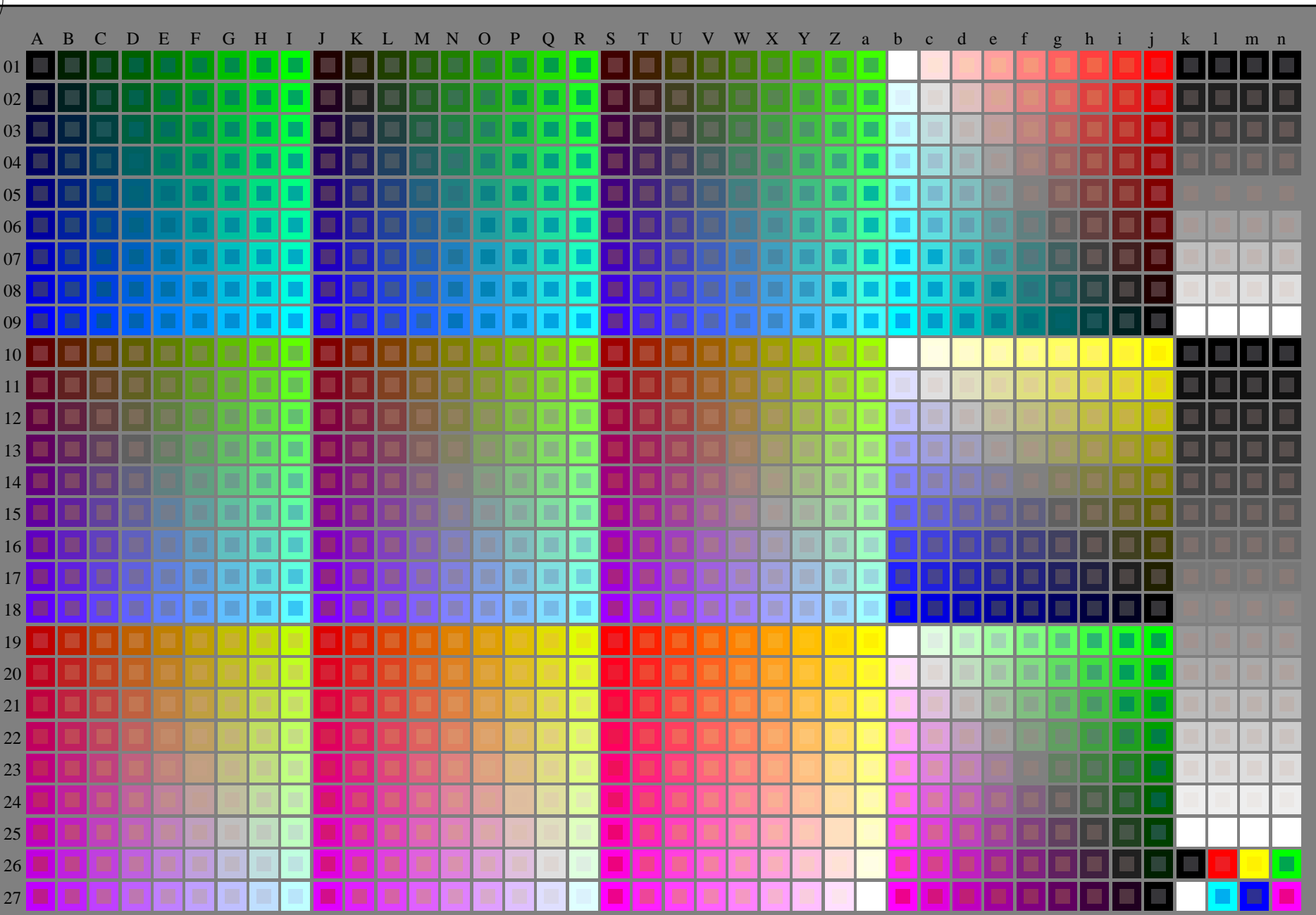
immettere: rgb/cmyk -> rgbdd
 uscita: 3D-linearizzazione a cmyk*dd

grafico TUB-RI59; 1080 colori standard
 colori e la differenza, ΔE*

vedere dei file simili: <http://130.149.60.45/~farbmetrik/RI59/RI59.HTM>
informazioni tecniche: <http://www.ps.bam.de> o <http://130.149.60.45/~farbmetrik>

TUB iscrizione: 20130201-RI59/RI59L0FA.TXT /.PS
la domanda per la misura di uscita della stampante laser

TUB materiale: code=rh4ta

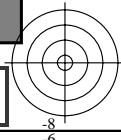
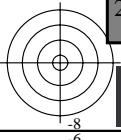


4-113030-L0 RI590-7N

rgb + cmy0 (A, j + k26, n27), 000n (k), w (l), nnn0 (m), www (n), 3D=1

grafico TUB-RI59; 1080 colori standard
grafico conformemente a DIN 33872, 3D=1, de=1, cmyk*

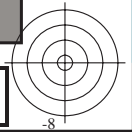
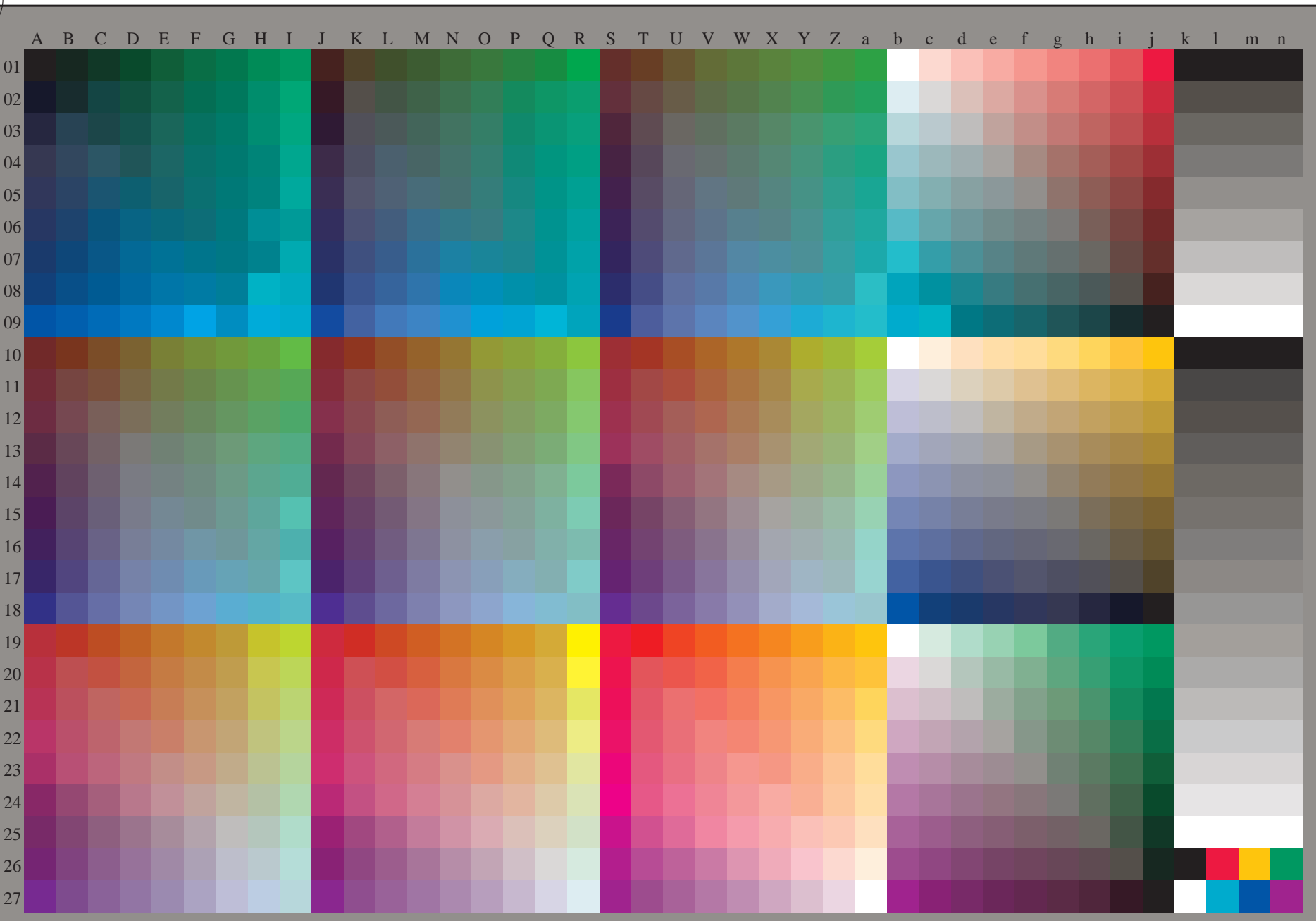
immettere: *rgb/cmyk* -> *rgb/cmyk*
uscita: nessun cambiamento





vedere dei file simili: <http://130.149.60.45/~farbmetrik/RI59/RI59.HTM>
informazioni tecniche: <http://www.ps.bam.de> o <http://130.149.60.45/~farbmetrik>

TUB iscrizione: 20130201-RI59/RI59L0FA.TXT /.PS
la domanda per la misura di uscita della stampante laser, separazione cmyk* (CMYK)
TUB materiale: code=rh4ta



4-113130-L0 RI590-73

rgb (A_n), 3D = 1

grafico TUB-RI59; 1080 colori standard
grafico conformemente a DIN 33872, 3D=1, de=1, cmyk*

immettere: $rgb/cmyk \rightarrow rgb_{de}$
uscita: 3D-linearizzazione a $cmyk^*_{de}$

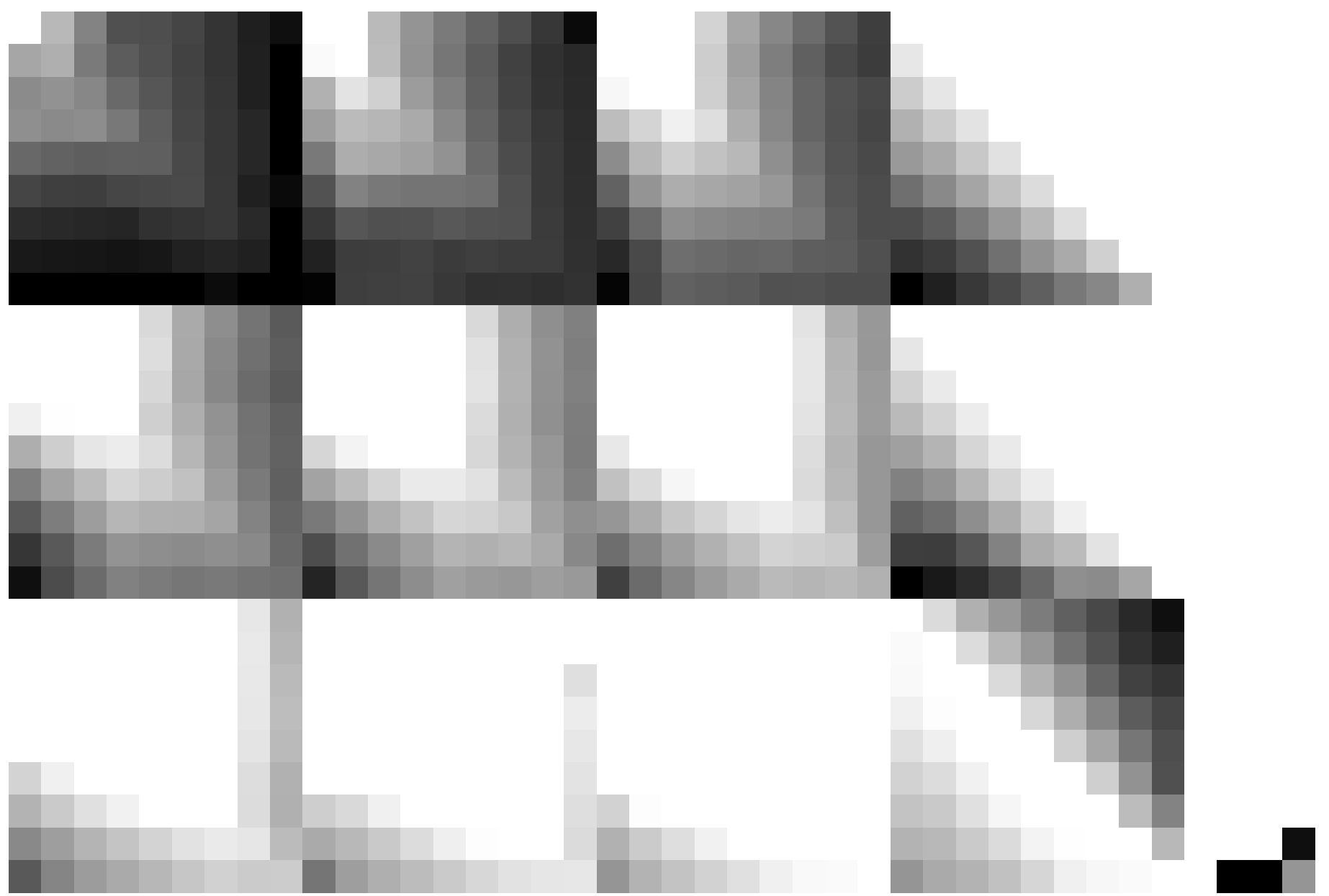
4-113130-F0

C M Y O L V

vedere dei file simili: <http://130.149.60.45/~farbmetrik/RI59/RI59.HTM>
informazioni tecniche: <http://www.ps.bam.de> o <http://130.149.60.45/~farbmetrik>

TUB iscrizione: 20130201-RI59/RI59L0FA.TXT /.PS
la domanda per la misura di uscita della stampante laser, separazione cmyk* (CMYK)

TUB materiale: code=rh4ta

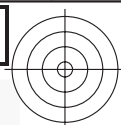


4-113230-L0 RI590-73

grafico TUB-RI59; 1080 colori standard
grafico conformemente a DIN 33872, 3D=1, de=1, cmyk*

immettere: $rgb/cmyk \rightarrow rgb_{de}$
uscita: 3D-linearizzazione a $cmyk^*_{de}$

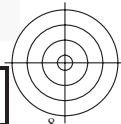
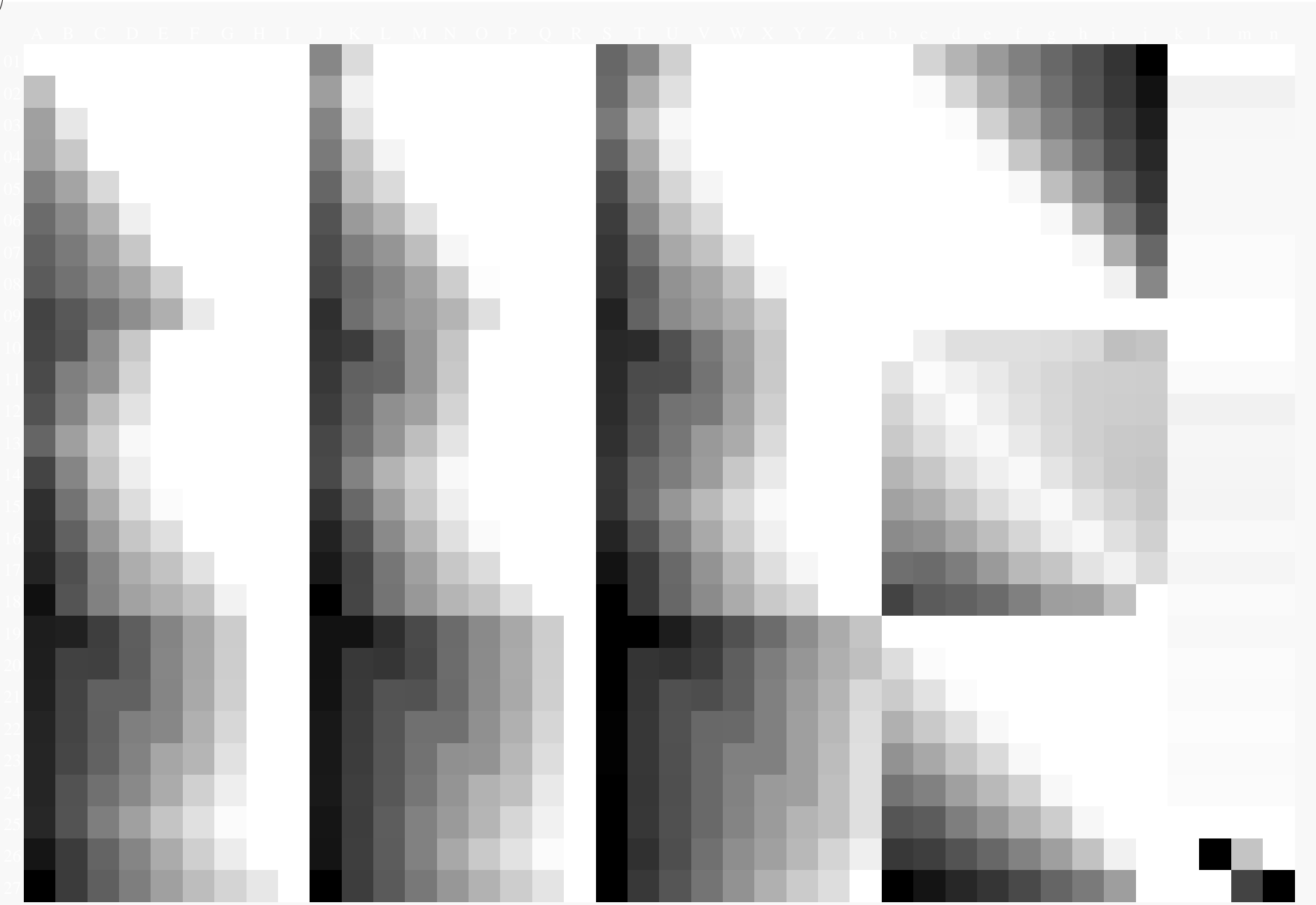
4-113230-F0



vedere dei file simili: <http://130.149.60.45/~farbmetrik/RI59/RI59.HTM>
informazioni tecniche: <http://www.ps.bam.de> o <http://130.149.60.45/~farbmetrik>

TUB iscrizione: 20130201-RI59/RI59L0FA.TXT /.PS
la domanda per la misura di uscita della stampante laser, separazione cmyk6* (CMYK)

TUB materiale: code=rh4ta



4-113330-L0 RI590-73

grafico TUB-RI59; 1080 colori standard
grafico conformemente a DIN 33872, 3D=1, de=1, cmyk*

immettere: $rgb/cmyk \rightarrow rgb_{de}$
uscita: 3D-linearizzazione a $cmyk^*_{de}$

4-113330-F0

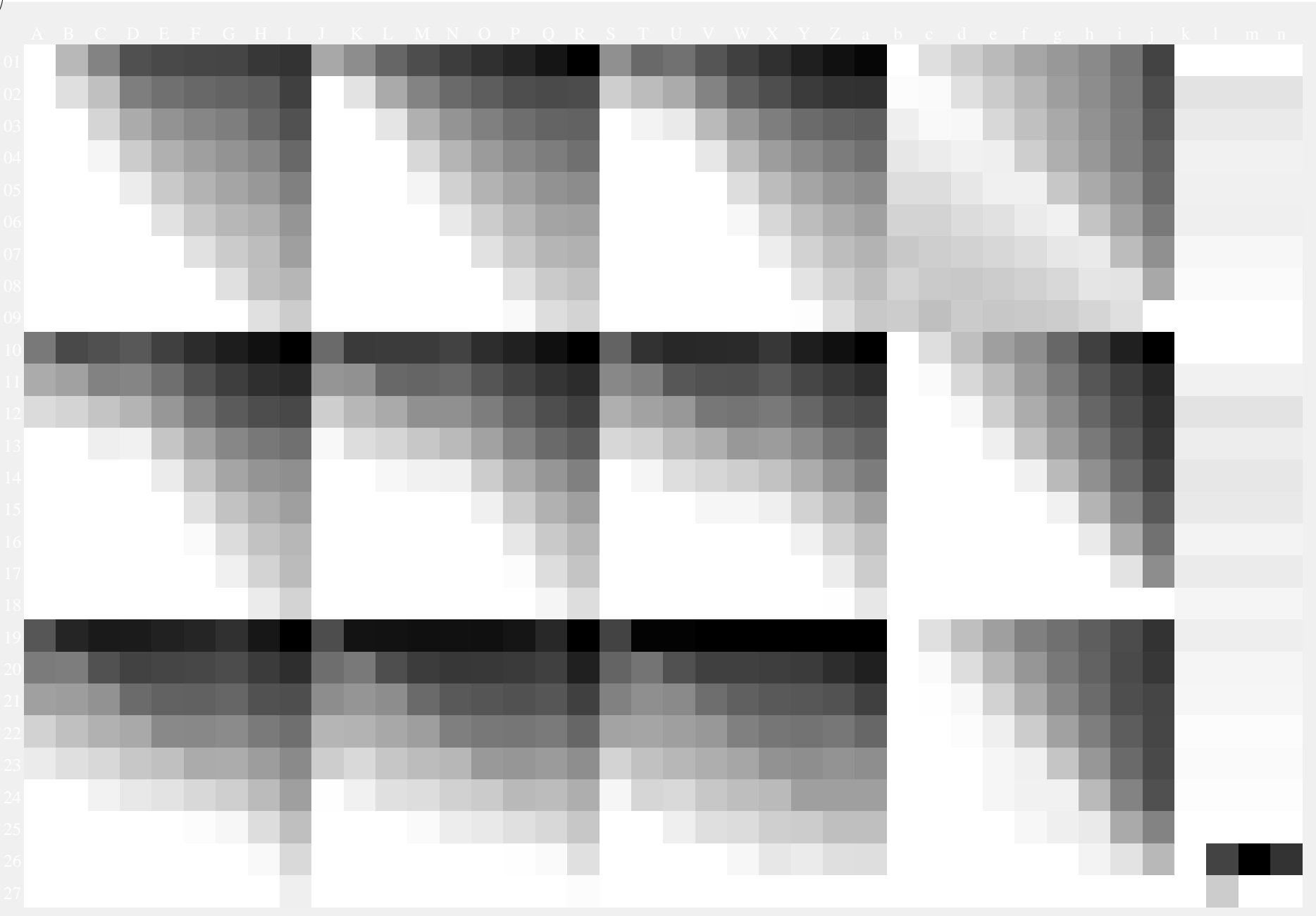




vedere dei file simili: <http://130.149.60.45/~farbmetrik/RI59/RI59.HTM>
informazioni tecniche: <http://www.ps.bam.de> o <http://130.149.60.45/~farbmetrik>

TUB iscrizione: 20130201-RI59/RI59L0FA.TXT /.PS
la domanda per la misura di uscita della stampante laser, separazione cmyk* (CMYK)

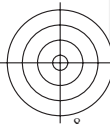
TUB materiale: code=rh4ta



4-113430-L0 RI590-73

grafico TUB-RI59; 1080 colori standard
grafico conformemente a DIN 33872, 3D=1, de=1, cmyk*

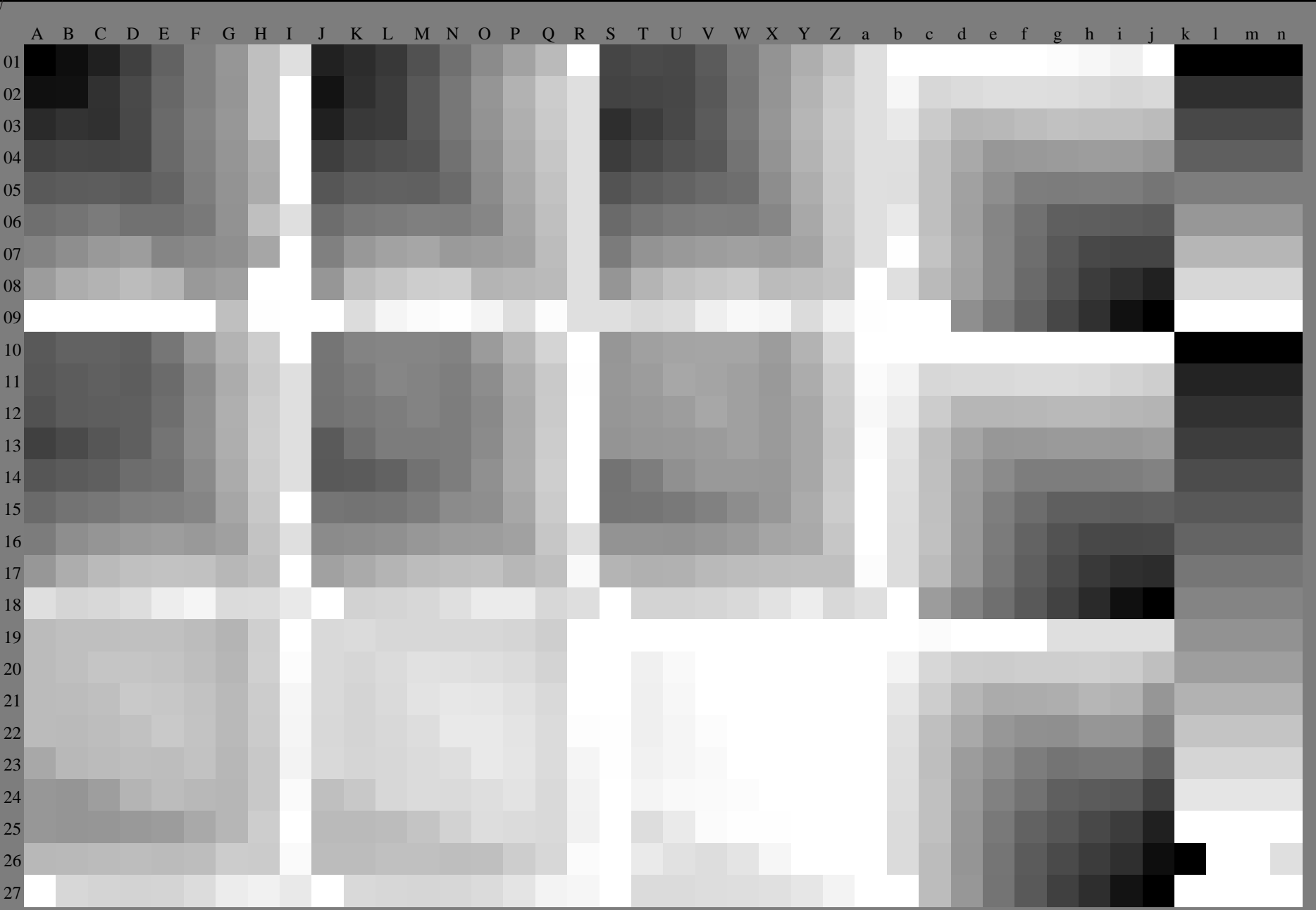
immettere: $rgb/cmyk \rightarrow rgb_{de}$
uscita: 3D-linearizzazione a $cmyk^*_{de}$



4-113430-F0

vedere dei file simili: <http://130.149.60.45/~farbmetrik/RI59/RI59.HTM>
informazioni tecniche: <http://www.ps.bam.de> o <http://130.149.60.45/~farbmetrik>

TUB iscrizione: 20130201-RI59/RI59L0FA.TXT /.PS
la domanda per la misura di uscita della stampante laser, separazione cmyk* (CMYK)
TUB materiale: code=rh4ta



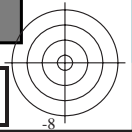
4-113530-L0 RI590-73

,3D=1

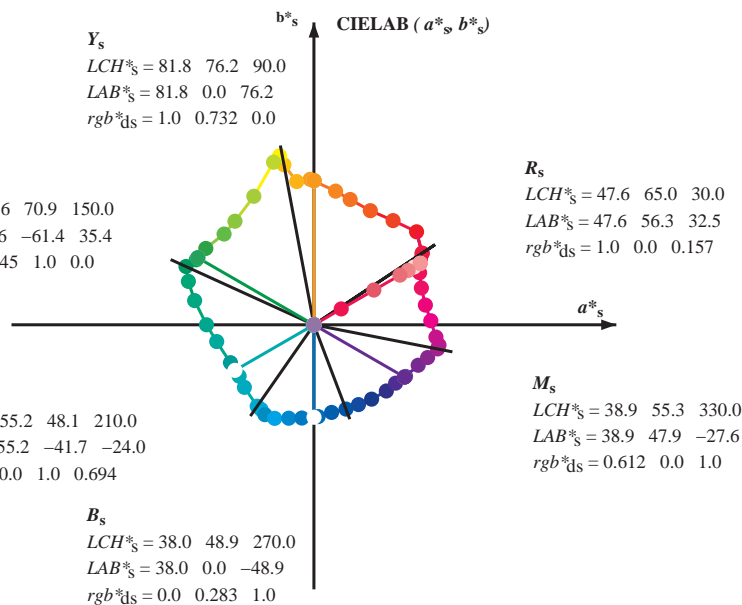
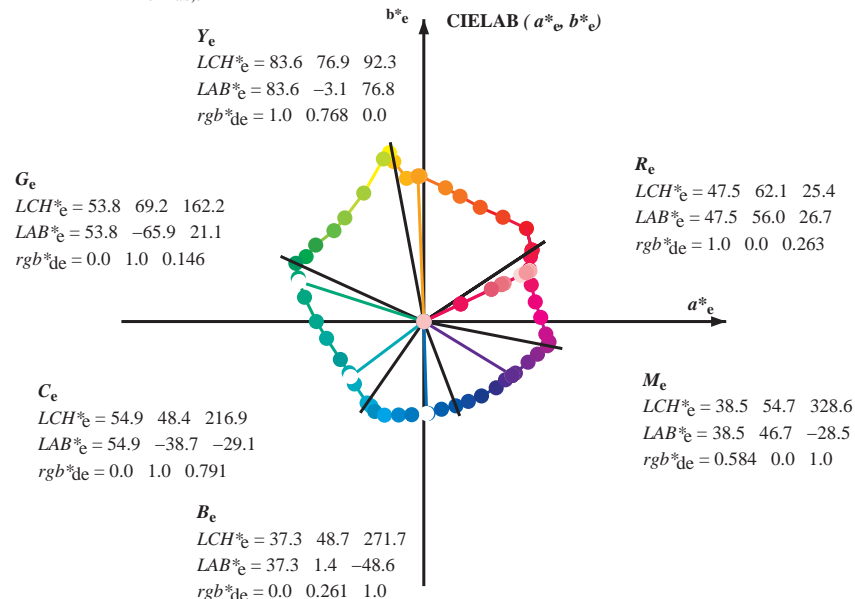
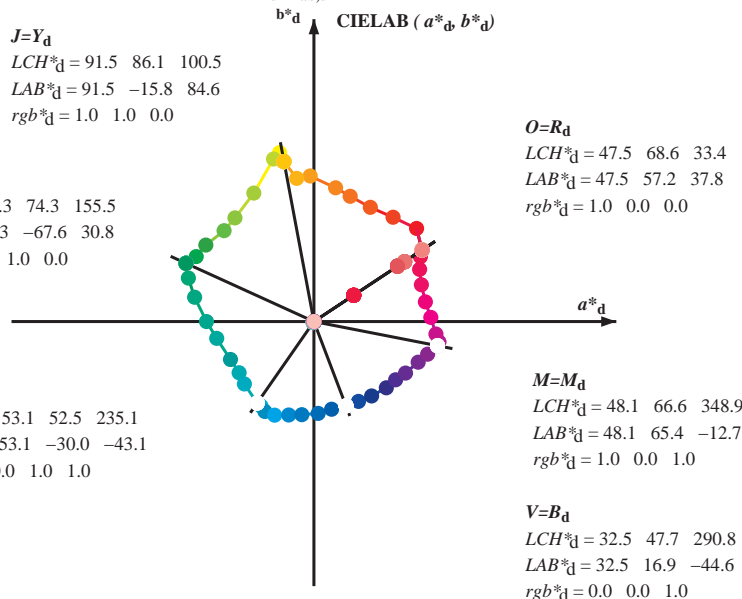
grafico TUB-RI59; 1080 colori standard
grafico conformemente a DIN 33872, 3D=1, de=1, cmyk*

immettere: $rgb/cmyk \rightarrow rgb_{de}$
uscita: 3D-linearizzazione a $cmyk^*_{de}$

4-113530-F0



Data of Maximum color M in colorimetric system Laser printer output; separation cmy₆*, D65 for input or output; Six hue angles of the 60 degree standard colours RYGBM_s: $h_{ab,ds} = 30.0, 90.0, 150.0, 210.0, 270.0, 330.0$;
 Six hue angles of the device colours RYGBM_d: $h_{ab,d} = 33.5, 100.6, 155.5, 235.2, 290.8, 348.9$; Six hue angles of the elementary colours RYGBM_e: $h_{ab,e} = 25.5, 92.3, 162.2, 217.0, 271.7, 328.6$



$(a^*_d, b^*_d), (a^*_s, b^*_s), (a^*_e, b^*_e)$
 $rgb^*_d, LCH^*_d, LAB^*_d$
 $h_{ab,s}, rgb^*_s$
 $h_{ab,s} = atan [r^*_d \cos(30) + g^*_d \cos(150)] / [r^*_d \sin(30) + g^*_d \sin(150) + b^*_d \sin(270)]$ (1)
 $h_{ab,s}$
 $s: h_{ab,s} = 30.0, 90.0, 150.0, 210.0, 270.0, 330.0, 390.0 (i=0,6)$
 $h_{48ab,sij} = h_{ab,si} + j [h_{ab,si+1} - h_{ab,si}] / 8 (i = 0, 1, \dots, 5; j = 0, 1, \dots, 7)$ (2)
 $h_{360ab,sij} = h_{ab,si} + j [h_{ab,si+1} - h_{ab,si}] / 60 (i = 0, 1, \dots, 5; j = 0, 1, \dots, 59)$ (3)
 $h_{ab,e}$
 $e: h_{ab,e} = 25.5, 92.3, 162.2, 217.0, 271.7, 328.6, 385.5 (i=0,6)$
 $h_{48ab,eij} = h_{ab,ei} + j [h_{ab,ei+1} - h_{ab,ei}] / 8 (i = 0, 1, \dots, 5; j = 0, 1, \dots, 7)$ (4)
 $h_{360ab,eij} = h_{ab,ei} + j [h_{ab,ei+1} - h_{ab,ei}] / 60 (i = 0, 1, \dots, 5; j = 0, 1, \dots, 59)$ (5)
 $h_{ab}, h_{ab,d}$
 rgb^*_e

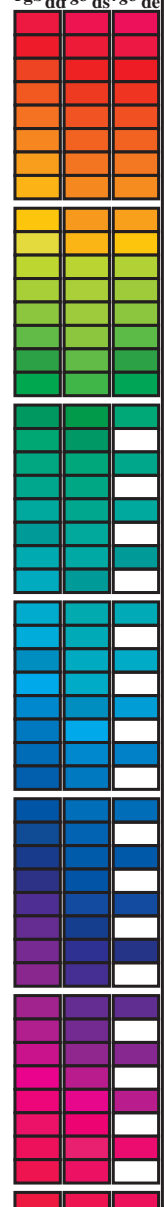
vedere dei file simili: http://130.149.60.45/~farbmetrik/RI59/RI59.HTM
 informazioni tecniche: http://www.ps.bam.de o http://130.149.60.45/~farbmetrik

TUB iscrizione: 20130201-RI59/RI59L0FA.TXT /.PS
 la domanda per la misura di uscita della stampante laser, separazione cmy₆*(CMYK)
 TUB materiale: code=rh4ta

Data of maximum color M in colorimetric system Laser printer output; separation cmyn6*, D65 for input or output; Six hue angles of the 60 degree standard colours RYGBM₆: h_{ab,ds} = 30.0, 90.0, 150.0, 210.0, 270.0, 330.0;

Six hue angles of the device colours RYGBM_d: h_{ab,d} = 33.5, 100.6, 155.5, 235.2, 290.8, 348.9; Six hue angles of the elementary colours RYGBM_e: h_{ab,e} = 25.5, 92.3, 162.2, 217.0, 271.7, 328.6

Table with 18 columns: h_{ab,d}, h_{ab,s}, h_{ab,e}, r_{gb}*, dd64M, LAB*_{64M} (x=LabCh), r_{gb}*, ddx361M, LAB*_{361M} (x=LabCh), r_{gb}*, dsx361M, LAB*_{361M} (x=LabCh), r_{gb}*, dex361M, LAB*_{361M} (x=LabCh), r_{gb}*, dsx361M, LAB*_{361M} (x=LabCh), r_{gb}*, dex361M, LAB*_{361M} (x=LabCh), r_{gb}*, dsx361M, LAB*_{361M} (x=LabCh), r_{gb}*, dex361M, LAB*_{361M} (x=LabCh). The table contains 393 rows of color data.



TUB iscrizione: 20130201-RI59/RI59L0FA.TXT /.PS
La domanda per la misura di uscita della stampante laser, separazione cmyn6* (CMYK)
TUB materiale: code=rhatha

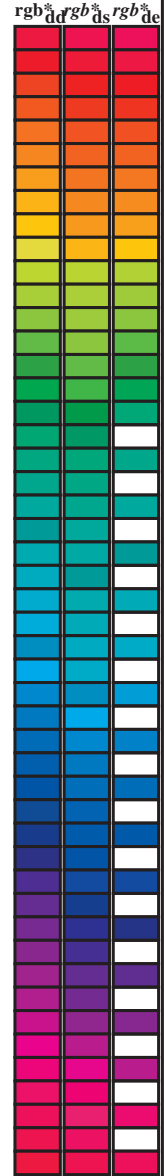
vedere dei file simili: http://130.149.60.45/~farbmetrik/RI59/RI59.HTM
informazioni tecniche: http://www.ps.bam.de o http://130.149.60.45/~farbmetrik

grafico TUB-RI59; 1080 colori standard
cerchio delle tinte a 48 passi; rgb-LabCh*tavole

immettere: rgb/cmyk -> rgb_{de}
uscita: 3D-linearizzazione a cm_yk*_{de}

Data of Maximum color M in colorimetric system Laser printer output; separation cmy6*, D65 for input or output; Six hue angles of the 60 degree standard colours RYGBM_s: h_{ab,ds} = 30.0, 90.0, 150.0, 210.0, 270.0, 330.0;
 Six hue angles of the device colours RYGBM_d: h_{ab,d} = 33.5, 100.6, 155.5, 235.2, 290.8, 348.9; Six hue angles of the elementary colours RYGBM_e: h_{ab,e} = 25.5, 92.3, 162.2, 217.0, 271.7, 328.6

h _{ab,d}	h _{ab,s}	h _{ab,e}	rgb* _{dd64M}	LAB* _{ddx64M} (x=LabCh)	rgb* _{dex361M}	LAB* _{dex361M}
33.4	30.0	25.4	1.0 0.0 0.0	47.5 57.2 37.8 68.6 33.4	33.4	1.0 0.0 0.263 47.6 56.1 26.7 62.1 25
42.1	37.5	33.8	1.0 0.125 0.0	51.9 54.3 49.2 73.2 42.1	42.1	1.0 0.0 0.012 47.6 57.2 37.5 68.4 33
52.8	45.0	42.1	1.0 0.25 0.0	58.2 41.8 55.1 69.2 52.8	52.8	1.0 0.125 0.0 52.0 54.3 49.2 73.3 42
63.7	52.5	50.5	1.0 0.375 0.0	64.6 29.8 60.4 67.3 63.7	63.7	1.0 0.216 0.0 56.6 45.2 53.9 70.3 49
73.8	60.0	58.8	1.0 0.5 0.0	70.5 19.2 66.2 69.0 73.8	73.8	1.0 0.32 0.0 61.8 35.2 58.4 68.2 58
80.7	67.5	67.2	1.0 0.625 0.0	74.9 11.4 70.7 71.6 80.7	80.7	1.0 0.412 0.0 66.4 26.9 62.3 67.9 66
91.5	75.0	75.6	1.0 0.75 0.0	82.9 -2.0 76.9 77.0 91.5	91.5	1.0 0.532 0.0 71.6 17.3 67.5 69.7 75
96.8	82.5	83.9	1.0 0.875 0.0	87.6 -9.0 75.7 76.3 96.8	96.8	1.0 0.655 0.0 76.9 8.4 72.5 73.0 83
100.5	90.0	92.3	1.0 1.0 0.0	91.5 -15.8 84.6 86.1 100.5	100.5	1.0 0.769 0.0 83.7 -3.0 76.8 76.9 92
101.4	97.5	101.0	0.875 1.0 0.0	92.8 -18.1 89.4 91.2 101.4	101.4	1.0 0.996 0.0 91.5 -15.5 84.4 85.8 100
103.9	105.0	109.7	0.75 1.0 0.0	90.1 -21.3 86.0 88.6 103.9	103.9	0.684 1.0 0.0 84.7 -27.5 76.7 81.5 109
115.0	112.5	118.5	0.625 1.0 0.0	79.9 -31.7 67.9 75.0 115.0	115.0	0.595 1.0 0.0 77.8 -34.4 65.0 73.6 117
127.3	120.0	127.2	0.5 1.0 0.0	70.9 -41.7 54.8 68.9 127.3	127.3	0.501 1.0 0.0 71.0 -41.6 54.9 68.9 127
134.7	127.5	136.0	0.375 1.0 0.0	66.5 -47.5 48.0 67.6 134.7	134.7	0.366 1.0 0.0 66.2 -48.2 47.6 67.8 135
144.7	135.0	144.7	0.25 1.0 0.0	60.6 -57.2 40.4 70.1 144.7	144.7	0.25 1.0 0.0 60.6 -57.1 40.5 70.1 144
151.0	142.5	153.4	0.125 1.0 0.0	57.0 -62.2 34.4 71.1 151.0	151.0	0.073 1.0 0.0 55.9 -64.4 33.0 72.5 152
155.5	150.0	162.2	0.0 1.0 0.0	54.3 -67.6 30.8 74.3 155.5	155.5	0.0 1.0 0.147 53.8 -65.9 21.1 69.3 162
160.8	157.5	169.0	0.0 1.0 0.125 53.8	-66.4 23.0 70.2 160.8	160.8	0.0 1.0 0.251 53.8 -63.0 12.7 64.4 168
168.5	165.0	175.9	0.0 1.0 0.25 53.7	-63.1 12.8 64.4 168.5	168.5	0.0 1.0 0.331 54.4 -59.3 4.2 59.5 175
179.9	172.5	182.7	0.0 1.0 0.375 54.7	-56.8 0.0 56.8 179.9	179.9	0.0 1.0 0.405 54.8 -55.6 -2.1 55.7 182
189.8	180.0	189.6	0.0 1.0 0.5 55.0	-51.4 -8.9 52.2 189.8	189.8	0.0 1.0 0.497 55.0 -51.5 -8.6 52.3 189
204.4	187.5	196.4	0.0 1.0 0.625 55.3	-44.1 -20.0 48.5 204.4	204.4	0.0 1.0 0.553 55.2 -48.6 -13.9 50.7 195
214.4	195.0	203.2	0.0 1.0 0.75 55.2	-39.5 -27.1 47.9 214.4	214.4	0.0 1.0 0.615 55.3 -44.7 -19.2 48.8 203
221.9	202.5	210.1	0.0 1.0 0.875 54.4	-36.7 -33.0 49.4 221.9	221.9	0.0 1.0 0.69 55.3 -41.8 -23.8 48.2 209
235.1	210.0	216.9	0.0 1.0 1.0 53.1	-30.0 -43.1 52.5 235.1	235.1	0.0 1.0 0.792 55.0 -38.6 -29.0 48.4 216
237.9	217.5	223.8	0.0 0.875 1.0 53.1	-27.9 -44.7 52.7 237.9	237.9	0.0 1.0 0.888 54.3 -36.1 -34.1 49.8 223
241.3	225.0	230.6	0.0 0.75 1.0 52.9	-25.9 -47.5 54.1 241.3	241.3	0.0 1.0 0.957 53.6 -32.5 -39.7 51.5 230
247.2	232.5	237.5	0.0 0.625 1.0 50.5	-20.8 -49.5 53.7 247.2	247.2	0.0 0.916 1.0 53.1 -28.6 -44.1 52.7 237
254.9	240.0	244.3	0.0 0.5 1.0 46.1	-13.3 -49.4 51.1 254.9	254.9	0.0 0.686 1.0 51.7 -23.3 -48.5 54.0 244
262.6	247.5	251.2	0.0 0.375 1.0 41.4	-6.3 -49.2 49.6 262.6	262.6	0.0 0.568 1.0 48.6 -17.2 -49.5 52.6 250
272.6	255.0	258.0	0.0 0.25 1.0 36.8	2.2 -48.5 48.6 272.6	272.6	0.0 0.449 1.0 44.2 -10.4 -49.4 50.6 258
281.4	262.5	264.8	0.0 0.125 1.0 35.0	9.4 -46.3 47.3 281.4	281.4	0.0 0.353 1.0 40.6 -4.7 -49.2 49.5 264
290.8	270.0	271.7	0.0 0.0 1.0 32.5	16.9 -44.6 47.7 290.8	290.8	0.0 0.261 1.0 37.3 1.5 -48.6 48.7 271
299.2	277.5	278.8	0.125 0.0 1.0 31.6	23.6 -42.2 48.4 299.2	299.2	0.0 0.169 1.0 35.7 7.0 -47.2 47.8 278
307.8	285.0	285.9	0.25 0.0 1.0 31.0	30.5 -39.3 49.8 307.8	307.8	0.0 0.065 1.0 33.9 13.1 -45.6 47.5 285
317.5	292.5	293.0	0.375 0.0 1.0 34.2	38.2 -35.0 51.8 317.5	317.5	0.026 0.0 1.0 32.4 18.4 -44.1 47.9 292
324.4	300.0	300.1	0.5 0.0 1.0 37.2	43.1 -30.8 53.0 324.4	324.4	0.139 0.0 1.0 31.5 24.4 -41.9 48.6 300
330.6	307.5	307.2	0.625 0.0 1.0 39.1	48.4 -27.2 55.6 330.6	330.6	0.235 0.0 1.0 31.1 29.8 -39.7 49.7 306
338.7	315.0	314.3	0.75 0.0 1.0 41.8	55.1 -21.4 59.1 338.7	338.7	0.335 0.0 1.0 33.2 35.8 -36.5 51.2 314
343.9	322.5	321.4	0.875 0.0 1.0 45.6	60.1 -17.3 62.6 343.9	343.9	0.439 0.0 1.0 35.8 40.8 -32.9 52.5 321
348.9	330.0	328.6	1.0 0.0 1.0 48.1	65.4 -12.7 66.6 348.9	348.9	0.584 0.0 1.0 38.5 46.8 -28.4 54.8 328
350.7	337.5	335.7	1.0 0.0 0.875 49.5	66.1 -10.7 67.0 350.7	350.7	0.696 0.0 1.0 40.7 52.3 -24.0 57.6 335
354.2	345.0	342.8	1.0 0.0 0.75 49.3	64.5 -6.5 64.8 354.2	354.2	0.848 0.0 1.0 44.9 59.1 -18.2 61.9 342
361.9	352.5	349.9	1.0 0.0 0.625 48.0	61.8 2.1 61.8 361.9	361.9	0.910 0.0 1.0 48.6 65.6 -12.1 66.8 349
370.0	360.0	357.0	1.0 0.0 0.5 47.8	58.9 10.4 59.9 370.0	370.0	1.0 0.0 0.828 49.5 65.6 -9.0 66.2 352
378.9	367.5	364.1	1.0 0.0 0.375 47.4	56.8 19.5 60.0 378.9	378.9	1.0 0.0 0.659 48.4 62.7 -0.1 62.7 359
386.2	375.0	371.2	1.0 0.0 0.25 47.5	55.9 27.5 62.3 386.2	386.2	1.0 0.0 0.519 47.8 59.5 9.2 60.2 368
391.3	382.5	378.3	1.0 0.0 0.125 47.6	56.3 34.2 65.9 391.3	391.3	1.0 0.0 0.408 47.5 57.6 17.1 60.0 376
393.4	390.0	385.4	1.0 0.0 0.0 47.5	57.2 37.8 68.6 393.4	393.4	1.0 0.0 0.263 47.6 56.1 26.7 62.1 385



vedere dei file simili: http://130.149.60.45/~farbmetrik/RI59/RI59L0FA.TXT /PS
 informazioni tecniche: http://www.ps.bam.de o http://130.149.60.45/~farbmetrik

TUB iscrizione: 20130201-RI59/RI59L0FA.TXT /PS
 la domanda per la misura di uscita della stampante laser, separazione cmy6* (CMYK)
 TUB materiale: code=rhata4ta

Data of Maximum color M in colorimetric system Laser printer output; separation cmy⁶*, D65 for input or output; Six hue angles of the 60 degree standard colours RY⁶CBM_s: h_{ab,ds} = 30.0, 90.0, 150.0, 210.0, 270.0, 330.0;

Six hue angles of the device colours RY⁶CBM_d: h_{ab,d} = 33.5, 100.6, 155.5, 235.2, 290.8, 348.9; Six hue angles of the elementary colours RY⁶CBM_e: h_{ab,e} = 25.5, 92.3, 162.2, 217.0, 271.7, 328.6

h _{ab,d}	h _{ab,s}	h _{ab,e}	rgb* _{dd361M}	LAB* _{ddx361Mi (x=LabCh)}	rgb* _{ds361Mi}	LAB* _{dsx361Mi (x=LabCh)}	rgb* _{dd361Mi}	LAB* _{de361Mi}	LAB* _{dex361Mi (x=LabCh)}	rgb* _{dd361Mi}	rgb* _{dd361Mi}	rgb* _{ds361Mi}	rgb* _{de361Mi}
127	120	127	0.5	1.0	0.0	70.9	-41.7	54.8	68.9	127	0.5	1.0	0.0
128	121	128	0.483	1.0	0.0	70.4	-42.6	53.9	68.7	128	0.483	1.0	0.0
129	122	129	0.466	1.0	0.0	69.8	-43.4	53.0	68.5	129	0.466	1.0	0.0
130	123	130	0.45	1.0	0.0	69.2	-44.2	52.1	68.3	130	0.45	1.0	0.0
131	124	131	0.433	1.0	0.0	68.6	-45.0	51.2	68.2	131	0.433	1.0	0.0
132	125	133	0.416	1.0	0.0	68.0	-45.7	50.3	68.0	132	0.416	1.0	0.0
133	126	134	0.4	1.0	0.0	67.4	-46.5	49.4	67.8	133	0.4	1.0	0.0
134	127	135	0.383	1.0	0.0	66.8	-47.2	48.5	67.7	134	0.383	1.0	0.0
135	128	136	0.366	1.0	0.0	66.1	-48.2	47.5	67.7	135	0.366	1.0	0.0
136	129	137	0.35	1.0	0.0	65.4	-49.5	46.6	68.1	136	0.35	1.0	0.0
138	130	138	0.333	1.0	0.0	64.6	-50.9	45.7	68.4	138	0.333	1.0	0.0
139	131	140	0.316	1.0	0.0	63.8	-52.2	44.7	68.7	139	0.316	1.0	0.0
140	132	141	0.3	1.0	0.0	63.0	-53.5	43.7	69.1	140	0.3	1.0	0.0
142	133	142	0.283	1.0	0.0	62.2	-54.7	42.6	69.4	142	0.283	1.0	0.0
143	134	143	0.266	1.0	0.0	61.4	-56.0	41.5	69.7	143	0.266	1.0	0.0
144	135	144	0.25	1.0	0.0	60.6	-57.2	40.4	70.1	144	0.25	1.0	0.0
145	136	145	0.233	1.0	0.0	60.1	-57.9	39.6	70.2	145	0.233	1.0	0.0
146	137	147	0.216	1.0	0.0	59.6	-58.6	38.9	70.3	146	0.216	1.0	0.0
147	138	148	0.2	1.0	0.0	59.1	-59.3	38.1	70.5	147	0.2	1.0	0.0
148	139	149	0.183	1.0	0.0	58.7	-59.9	37.3	70.6	148	0.183	1.0	0.0
148	140	150	0.166	1.0	0.0	58.2	-60.6	36.4	70.7	148	0.166	1.0	0.0
149	141	151	0.15	1.0	0.0	57.7	-61.2	35.6	70.9	149	0.15	1.0	0.0
150	142	152	0.133	1.0	0.0	57.2	-61.9	34.8	71.0	150	0.133	1.0	0.0
151	143	154	0.116	1.0	0.0	56.8	-62.5	34.1	71.3	151	0.116	1.0	0.0
151	144	155	0.1	1.0	0.0	56.4	-63.3	33.7	71.7	151	0.1	1.0	0.0
152	145	156	0.083	1.0	0.0	56.1	-64.0	33.2	72.1	152	0.083	1.0	0.0
153	146	157	0.066	1.0	0.0	55.7	-64.7	32.8	72.6	153	0.066	1.0	0.0
153	147	158	0.049	1.0	0.0	55.4	-65.5	32.3	73.0	153	0.049	1.0	0.0
154	148	159	0.033	1.0	0.0	55.0	-66.2	31.8	73.5	154	0.033	1.0	0.0
154	149	161	0.016	1.0	0.0	54.7	-66.9	31.3	73.9	154	0.016	1.0	0.0
155	150	162	0.0	1.0	0.0	54.3	-67.6	30.8	74.3	155	0.0	1.0	0.0
156	151	163	0.0	1.0	0.016	54.2	-67.5	29.7	73.8	156	0.0	1.0	0.017
156	152	164	0.0	1.0	0.033	54.2	-67.4	28.6	73.2	156	0.0	1.0	0.033
157	153	164	0.0	1.0	0.05	54.1	-67.2	27.6	72.7	157	0.0	1.0	0.05
158	154	165	0.0	1.0	0.066	54.0	-67.1	26.6	72.1	158	0.0	1.0	0.067
159	155	166	0.0	1.0	0.083	53.9	-66.9	25.5	71.6	159	0.0	1.0	0.083
159	156	167	0.0	1.0	0.1	53.9	-66.7	24.5	71.1	159	0.0	1.0	0.1
160	157	168	0.0	1.0	0.116	53.8	-66.5	23.5	70.5	160	0.0	1.0	0.117
161	158	169	0.0	1.0	0.133	53.8	-66.2	22.3	69.9	161	0.0	1.0	0.133
162	159	170	0.0	1.0	0.15	53.8	-65.8	20.8	69.1	162	0.0	1.0	0.15
163	160	171	0.0	1.0	0.166	53.8	-65.5	19.4	68.3	163	0.0	1.0	0.167
164	161	172	0.0	1.0	0.183	53.8	-65.0	18.1	67.5	164	0.0	1.0	0.183
165	162	173	0.0	1.0	0.2	53.8	-64.6	16.7	66.7	165	0.0	1.0	0.2
166	163	174	0.0	1.0	0.216	53.7	-64.1	15.4	66.0	166	0.0	1.0	0.217
167	164	175	0.0	1.0	0.233	53.7	-63.6	14.1	65.2	167	0.0	1.0	0.233
168	165	175	0.0	1.0	0.25	53.7	-63.1	12.8	64.4	168	0.0	1.0	0.25

4-1131130-L0 RI590-73

LAB*ta0, YN=0%, XYZnw=3.9, 4.1, 4.1, 84.7, 89.6, 93.9, LAB*nw=23.9, 0.0, 0.0, 95.8, 0.0, 0.0

uscita: Laser printer output; separation cmy⁶*, D65, pagina 12/33

grafico TUB-RI59; 1080 colori standard
 cerchio delle tinte a 48 passi; rgb-LabCh*tavole

immettere: rgb/cmyk -> rgb_{de}
 uscita: 3D-linearizzazione a cmyk*_{de}

4-1131130-F0

vedere dei file simili: http://130.149.60.45/~farbmetrik/RI59/RI59.HTM
 informazioni tecniche: http://www.ps.bam.de o http://130.149.60.45/~farbmetrik

TUB iscrizione: 20130201-RI59/RI59L0FA.TXT /.PS
 la domanda per la misura di uscita della stampante laser, separazione cmy⁶* (CMYK)
 TUB materiale: code=rh4ta

http://130.149.60.45/~farbmetrik/RI59/RI59L0FA.TXT /.PS; 3D-linearizzazione
F: 3D-linearizzazione RI59/RI59L30FA.DAT nel file (F), pagina 22/33

Table with 24 columns: n, HHC*File, rpb*File, icr*File, hsa*File, rpb*File, LabCM*File, cmyk*sep, cmyk*File, LabCM*File, hsa*File, rpb*File, LabCM*File, delta. Rows 162-242 list various color patches and their corresponding colorimetric data.

immettere: rgb/cmyk -> rgdb
uscita: 3D-linearizzazione a cmyk*de

grafico TUB-RI59; 1080 colori standard
colori e la differenza, ΔE*

<http://130.149.60.45/~farbmetrik/RI59/RI59LOFA.TXT / PS; 3D-linearizzazione>
F: 3D-linearizzazione RI59/RI59L30FA.DAT nel file (F), pagina 23/33

Table with 32 columns: n, HHC*File, rgb*File, icr*File, hsa*File, rgb*File, LabCM*File, cmyk*sep, cmyk*File, hsa*File, rgb*File, LabCM*File, delta. Rows 243-323.

grafico TUB-RI59; 1080 colori standard
colori e la differenza, ΔE*

immettere: rgb/cmyk -> rgdb
uscita: 3D-linearizzazione a cmyk*de

http://130.149.60.45/~farbmetrik/RI59/RI59LOFA.TXT /.PS; 3D-linearizzazione
F: 3D-linearizzazione RI59/RI59L30FA.DAT nel file (F), pagina 24/33

Table with 40 columns: n, HHC*File, rgb*File, icr*File, hsa*File, rgb*File, LabCM*File, cmyk*sep,File, cmyk*File, LabCM*File, Hsa*File, rgb*File, LabCM*File, delta. Rows include color codes like R00Y, B00M, etc.

immettere: rgb/cmyk -> rgbd
uscita: 3D-linearizzazione a cmyk*de

<http://130.149.60.45/~farbmetrik/RI59/RI59LOFA.TXT> / PS; 3D-linearizzazione
F: 3D-linearizzazione RI59/RI59L30FA.DAT nel file (F), pagina 25/33

Table with 15 columns: n, HHC*File, rpb_Efile, icr_Efile, hsa_Efile, rpb*File, LabCM*File, cmyk*sep_Efile, hsa*File, rpb*File, LabCM*File, delta, and 15 unlabeled columns. The table contains 485 rows of data.

immettere: rgb/cmyk -> rgbd
uscita: 3D-linearizzazione a cmyk*de

grafico TUB-RI59; 1080 colori standard
colori e la differenza, ΔE*

<http://130.149.60.45/~farbmetrik/RI59/RI59LOFA.TXT / PS; 3D-linearizzazione>
F: 3D-linearizzazione RI59/RI59L30FA.DAT nel file (F), pagina 26/33

Table with 10 columns: n, HHC*File, rgb*File, icr*File, hsa*File, rgb*File, LabCM*File, cmyk*sep,File, delta, LabCM*File. Rows include color codes like R00Y, R01Y, R02Y, etc.

immettere: *rgb/cmyk* -> *rgbd*
uscita: 3D-linearizzazione a *cmyk**de

grafico TUB-RI59; 1080 colori standard
colori e la differenza, ΔE*

RI590-7N; 2633-F

4-1132530-F0

4-1132530-F0

<http://130.149.60.45/~farbmetrik/RI59/RI59LOFA.TXT /.PS; 3D-linearizzazione>
F: 3D-linearizzazione RI59/RI59L30FA.DAT nel file (F), pagina 27/33

Table with 15 columns: n, HHC*File, rgb*File, icr*File, Hsa*File, rgb*File, LabCM*File, cmyk*sep, cmyk*File, LabCM*File, Hsa*File, rgb*File, LabCM*File, LabCM*File, delta. Rows contain numerical data for various file types and color channels.

immettere: rgb/cmyk -> rgbd
uscita: 3D-linearizzazione a cmyk*de

grafico TUB-RI59; 1080 colori standard
colori e la differenza, ΔE*

<http://130.149.60.45/~farbmetrik/RI59/RI59LOFA.TXT /.PS; 3D-linearizzazione>
F: 3D-linearizzazione RI59/RI59L30FA.DAT nel file (F), pagina 28/33

Table with 10 columns: n, HHC*File, rpb*File, icr*File, Hs*File, rpb*File, LabCM*File, cmyk*sep, rpb*File, LabCM*File, delta. Rows 648-728.

grafico TUB-RI59; 1080 colori standard
colori e la differenza, ΔE*

immettere: rgb/cmyk -> rgbd
uscita: 3D-linearizzazione a cmyk*de

http://130.149.60.45/~farbmetrik/RI59/RI59LOFA.TXT /.PS; 3D-linearizzazione
F: 3D-linearizzazione RI59/RI59L30FA.DAT nel file (F), pagina 31/33

Table with 15 columns: n, H/C*F, r/g/b*F, i/c/t*F, h/s*F, r/g/b*F, LabC/M*F, LabC/M*F, cmyk*sep, cmyk*sep, r/g/b*F, h/s*F, LabC/M*F, LabC/M*F, delta. The table contains 971 rows of data for various color patches.

immettere: r/g/b/cmyk -> r/g/b/d
uscita: 3D-linearizzazione a cmyk*de

grafico TUB-RI59; 1080 colori standard
colori e la differenza, ΔE*

n	HC*File	rgb*File	iet*File	hsa*File	rgb*File	LabCM*File	cmyn6*sep*File	hsa*File	rgb*File	LabCM*File
972	NW_000de	0.125	0.0	0.0	0.0	23.8	0.0	360	1.0	1.0
973	NW_012de	0.125	0.125	0.0	0.0	23.8	0.0	360	1.0	1.0
974	NW_025de	0.25	0.25	0.0	0.0	41.8	0.0	360	1.0	1.0
975	NW_037de	0.375	0.375	0.0	0.0	59.8	0.0	360	1.0	1.0
976	NW_050de	0.5	0.5	0.0	0.0	77.8	0.0	360	1.0	1.0
977	NW_062de	0.625	0.625	0.0	0.0	95.8	0.0	360	1.0	1.0
978	NW_075de	0.75	0.75	0.0	0.0	113.8	0.0	360	1.0	1.0
979	NW_087de	0.875	0.875	0.0	0.0	131.8	0.0	360	1.0	1.0
980	NW_100de	1.0	1.0	0.0	0.0	149.8	0.0	360	1.0	1.0
981	NW_100de	0.0	0.0	0.0	0.0	23.8	0.0	360	1.0	1.0
982	NW_012de	0.125	0.125	0.0	0.0	23.8	0.0	360	1.0	1.0
983	NW_025de	0.25	0.25	0.0	0.0	41.8	0.0	360	1.0	1.0
984	NW_037de	0.375	0.375	0.0	0.0	59.8	0.0	360	1.0	1.0
985	NW_050de	0.5	0.5	0.0	0.0	77.8	0.0	360	1.0	1.0
986	NW_062de	0.625	0.625	0.0	0.0	95.8	0.0	360	1.0	1.0
987	NW_075de	0.75	0.75	0.0	0.0	113.8	0.0	360	1.0	1.0
988	NW_087de	0.875	0.875	0.0	0.0	131.8	0.0	360	1.0	1.0
989	NW_100de	1.0	1.0	0.0	0.0	149.8	0.0	360	1.0	1.0
990	NW_100de	0.0	0.0	0.0	0.0	23.8	0.0	360	1.0	1.0
991	NW_012de	0.125	0.125	0.0	0.0	23.8	0.0	360	1.0	1.0
992	NW_025de	0.25	0.25	0.0	0.0	41.8	0.0	360	1.0	1.0
993	NW_037de	0.375	0.375	0.0	0.0	59.8	0.0	360	1.0	1.0
994	NW_050de	0.5	0.5	0.0	0.0	77.8	0.0	360	1.0	1.0
995	NW_062de	0.625	0.625	0.0	0.0	95.8	0.0	360	1.0	1.0
996	NW_075de	0.75	0.75	0.0	0.0	113.8	0.0	360	1.0	1.0
997	NW_087de	0.875	0.875	0.0	0.0	131.8	0.0	360	1.0	1.0
998	NW_100de	1.0	1.0	0.0	0.0	149.8	0.0	360	1.0	1.0
999	NW_100de	0.0	0.0	0.0	0.0	23.8	0.0	360	1.0	1.0
1000	NW_012de	0.125	0.125	0.0	0.0	23.8	0.0	360	1.0	1.0
1001	NW_025de	0.25	0.25	0.0	0.0	41.8	0.0	360	1.0	1.0
1002	NW_037de	0.375	0.375	0.0	0.0	59.8	0.0	360	1.0	1.0
1003	NW_050de	0.5	0.5	0.0	0.0	77.8	0.0	360	1.0	1.0
1004	NW_062de	0.625	0.625	0.0	0.0	95.8	0.0	360	1.0	1.0
1005	NW_075de	0.75	0.75	0.0	0.0	113.8	0.0	360	1.0	1.0
1006	NW_087de	0.875	0.875	0.0	0.0	131.8	0.0	360	1.0	1.0
1007	NW_100de	1.0	1.0	0.0	0.0	149.8	0.0	360	1.0	1.0
1008	NW_100de	0.0	0.0	0.0	0.0	23.8	0.0	360	1.0	1.0
1009	NW_012de	0.125	0.125	0.0	0.0	23.8	0.0	360	1.0	1.0
1010	NW_025de	0.25	0.25	0.0	0.0	41.8	0.0	360	1.0	1.0
1011	NW_037de	0.375	0.375	0.0	0.0	59.8	0.0	360	1.0	1.0
1012	NW_050de	0.5	0.5	0.0	0.0	77.8	0.0	360	1.0	1.0
1013	NW_062de	0.625	0.625	0.0	0.0	95.8	0.0	360	1.0	1.0
1014	NW_075de	0.75	0.75	0.0	0.0	113.8	0.0	360	1.0	1.0
1015	NW_087de	0.875	0.875	0.0	0.0	131.8	0.0	360	1.0	1.0
1016	NW_100de	1.0	1.0	0.0	0.0	149.8	0.0	360	1.0	1.0
1017	NW_100de	0.0	0.0	0.0	0.0	23.8	0.0	360	1.0	1.0
1018	NW_012de	0.125	0.125	0.0	0.0	23.8	0.0	360	1.0	1.0
1019	NW_025de	0.25	0.25	0.0	0.0	41.8	0.0	360	1.0	1.0
1020	NW_037de	0.375	0.375	0.0	0.0	59.8	0.0	360	1.0	1.0
1021	NW_050de	0.5	0.5	0.0	0.0	77.8	0.0	360	1.0	1.0
1022	NW_062de	0.625	0.625	0.0	0.0	95.8	0.0	360	1.0	1.0
1023	NW_075de	0.75	0.75	0.0	0.0	113.8	0.0	360	1.0	1.0
1024	NW_087de	0.875	0.875	0.0	0.0	131.8	0.0	360	1.0	1.0
1025	NW_100de	1.0	1.0	0.0	0.0	149.8	0.0	360	1.0	1.0
1026	NW_100de	0.0	0.0	0.0	0.0	23.8	0.0	360	1.0	1.0
1027	NW_012de	0.125	0.125	0.0	0.0	23.8	0.0	360	1.0	1.0
1028	NW_025de	0.25	0.25	0.0	0.0	41.8	0.0	360	1.0	1.0
1029	NW_037de	0.375	0.375	0.0	0.0	59.8	0.0	360	1.0	1.0
1030	NW_050de	0.5	0.5	0.0	0.0	77.8	0.0	360	1.0	1.0
1031	NW_062de	0.625	0.625	0.0	0.0	95.8	0.0	360	1.0	1.0
1032	NW_075de	0.75	0.75	0.0	0.0	113.8	0.0	360	1.0	1.0
1033	NW_087de	0.875	0.875	0.0	0.0	131.8	0.0	360	1.0	1.0
1034	NW_100de	1.0	1.0	0.0	0.0	149.8	0.0	360	1.0	1.0
1035	NW_100de	0.0	0.0	0.0	0.0	23.8	0.0	360	1.0	1.0
1036	NW_012de	0.125	0.125	0.0	0.0	23.8	0.0	360	1.0	1.0
1037	NW_025de	0.25	0.25	0.0	0.0	41.8	0.0	360	1.0	1.0
1038	NW_037de	0.375	0.375	0.0	0.0	59.8	0.0	360	1.0	1.0
1039	NW_050de	0.5	0.5	0.0	0.0	77.8	0.0	360	1.0	1.0
1040	NW_062de	0.625	0.625	0.0	0.0	95.8	0.0	360	1.0	1.0
1041	NW_075de	0.75	0.75	0.0	0.0	113.8	0.0	360	1.0	1.0
1042	NW_087de	0.875	0.875	0.0	0.0	131.8	0.0	360	1.0	1.0
1043	NW_100de	1.0	1.0	0.0	0.0	149.8	0.0	360	1.0	1.0
1044	NW_100de	0.0	0.0	0.0	0.0	23.8	0.0	360	1.0	1.0
1045	NW_012de	0.125	0.125	0.0	0.0	23.8	0.0	360	1.0	1.0
1046	NW_025de	0.25	0.25	0.0	0.0	41.8	0.0	360	1.0	1.0
1047	NW_037de	0.375	0.375	0.0	0.0	59.8	0.0	360	1.0	1.0
1048	NW_050de	0.5	0.5	0.0	0.0	77.8	0.0	360	1.0	1.0
1049	NW_062de	0.625	0.625	0.0	0.0	95.8	0.0	360	1.0	1.0
1050	NW_075de	0.75	0.75	0.0	0.0	113.8	0.0	360	1.0	1.0
1051	NW_087de	0.875	0.875	0.0	0.0	131.8	0.0	360	1.0	1.0
1052	NW_100de	1.0	1.0	0.0	0.0	149.8	0.0	360	1.0	1.0

RI590-7N_3233-F

grafico TUB-RI59; 1080 colori standard
colori e la differenza, ΔE*

immettere: rgb/cmyk -> rgbde
uscita: 3D-linearizzazione a cmyk*de

4-1133130-F0



http://130.149.60.45/~farbmetrik/RI59/RI59L0FA.TXT /.PS; 3D-linearizzazione
F: 3D-linearizzazione RI59/RI59L130FA.DAT nel file (F), pagina 33/33

n	HC*File	rgb*File	ier*File	hsa*File	rgb*File	LabC*File	cmyn*sep*File	cmyp*sep*File	LabC*File	hsa*File	rgb*File	LabC*File					
1053	NW_086de	0.866	0.866	0.866	0.866	0.866	0.0	0.0	0.164	0.02	0.019	0.0	95.8	0.0	0.0	0.0	0.0
1054	NW_093de	0.933	0.933	0.933	0.933	0.933	0.0	0.0	0.103	0.005	0.016	0.0	95.8	0.0	0.0	0.0	0.0
1055	NW_100de	1.0	1.0	1.0	1.0	1.0	0.0	0.0	0.0	0.0	0.0	0.0	95.8	0.0	0.0	0.0	0.0
1056	NW_006de	0.066	0.066	0.066	0.066	0.066	0.0	0.0	0.0	0.0	0.0	0.0	95.8	0.0	0.0	0.0	0.0
1057	NW_013de	0.133	0.133	0.133	0.133	0.133	0.0	0.0	0.0	0.054	0.016	0.0	95.8	0.0	0.0	0.0	0.0
1058	NW_020de	0.2	0.2	0.2	0.2	0.2	0.0	0.0	0.809	0.109	0.034	0.0	95.8	0.0	0.0	0.0	0.0
1059	NW_026de	0.266	0.266	0.266	0.266	0.266	0.0	0.0	0.76	0.039	0.053	0.0	95.8	0.0	0.0	0.0	0.0
1060	NW_033de	0.333	0.333	0.333	0.333	0.333	0.0	0.0	0.701	0.044	0.078	0.0	95.8	0.0	0.0	0.0	0.0
1061	NW_040de	0.4	0.4	0.4	0.4	0.4	0.0	0.0	0.608	0.023	0.085	0.0	95.8	0.0	0.0	0.0	0.0
1062	NW_046de	0.466	0.466	0.466	0.466	0.466	0.0	0.0	0.539	0.078	0.038	0.0	95.8	0.0	0.0	0.0	0.0
1063	NW_053de	0.533	0.533	0.533	0.533	0.533	0.0	0.0	0.482	0.04	0.023	0.0	95.8	0.0	0.0	0.0	0.0
1064	NW_060de	0.6	0.6	0.6	0.6	0.6	0.0	0.0	0.427	0.028	0.064	0.0	95.8	0.0	0.0	0.0	0.0
1065	NW_066de	0.666	0.666	0.666	0.666	0.666	0.0	0.0	0.381	0.017	0.015	0.0	95.8	0.0	0.0	0.0	0.0
1066	NW_073de	0.734	0.734	0.734	0.734	0.734	0.0	0.0	0.301	0.017	0.011	0.0	95.8	0.0	0.0	0.0	0.0
1067	NW_080de	0.8	0.8	0.8	0.8	0.8	0.0	0.0	0.23	0.002	0.001	0.0	95.8	0.0	0.0	0.0	0.0
1068	NW_086de	0.866	0.866	0.866	0.866	0.866	0.0	0.0	0.164	0.005	0.016	0.0	95.8	0.0	0.0	0.0	0.0
1069	NW_093de	0.933	0.933	0.933	0.933	0.933	0.0	0.0	0.103	0.002	0.001	0.0	95.8	0.0	0.0	0.0	0.0
1070	NW_100de	1.0	1.0	1.0	1.0	1.0	0.0	0.0	0.0	0.0	0.0	0.0	95.8	0.0	0.0	0.0	0.0
1071	NW_006de	0.0	0.0	0.0	0.0	0.0	0.0	0.0	0.0	0.0	0.0	0.0	95.8	0.0	0.0	0.0	0.0
1072	NW_013de	0.1	0.1	0.1	0.1	0.1	0.0	0.0	0.0	0.0	0.0	0.0	95.8	0.0	0.0	0.0	0.0
1073	RO0_100_100de	1.0	1.0	1.0	1.0	1.0	0.0	0.0	0.0	0.0	0.0	0.0	95.8	0.0	0.0	0.0	0.0
1074	RO0_100_100de	1.0	1.0	1.0	1.0	1.0	0.0	0.0	0.0	0.0	0.0	0.0	95.8	0.0	0.0	0.0	0.0
1075	GY0_100_100de	0.0	1.0	1.0	1.0	0.0	0.0	0.0	0.0	0.0	0.0	0.0	95.8	0.0	0.0	0.0	0.0
1076	Y0_100_100de	1.0	0.0	1.0	1.0	0.0	0.0	0.0	0.0	0.0	0.0	0.0	95.8	0.0	0.0	0.0	0.0
1077	B0_100_100de	0.0	0.0	1.0	1.0	0.0	0.0	0.0	0.0	0.0	0.0	0.0	95.8	0.0	0.0	0.0	0.0
1078	B0R_100_100de	0.0	0.0	1.0	1.0	0.0	0.0	0.0	0.0	0.0	0.0	0.0	95.8	0.0	0.0	0.0	0.0
1079	B50R_100_100de	0.0	0.0	1.0	1.0	0.0	0.0	0.0	0.0	0.0	0.0	0.0	95.8	0.0	0.0	0.0	0.0

delta

immettere: rgb/cmyk -> rgbde
uscita: 3D-linearizzazione a cmyk*de

grafico TUB-RI59; 1080 colori standard
colori e la differenza, ΔE^*

4-113320-F0

RI590-7N_3333-F