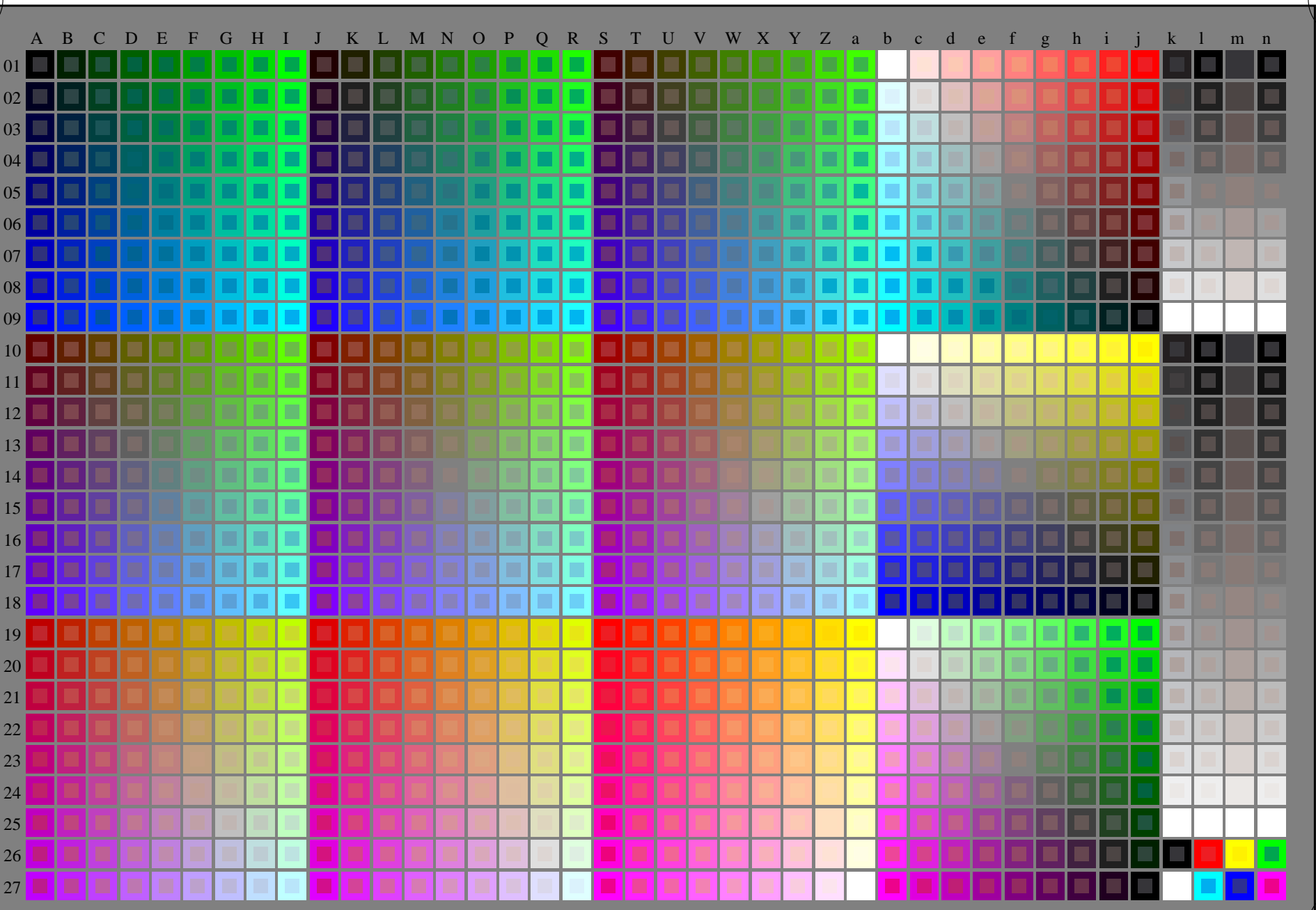


http://130.149.60.45/~farbmetrik/RN60/RN60L0FA.TXT /.PS; start output
F: 3D-linearisering RN60/RN60LJ30FA.DAT i fil (F), side 1/2

se lignende filer: <http://130.149.60.45/~farbmetrik/RN60/RN60.HTM>
teknisk informasjon: <http://www.ps.bam.de> eller <http://130.149.60.45/~farbmetrik>



TUB registrering: 20150701-RN60/RN60L0FA.TXT /.PS
anvendelse for måling av laserprinter output

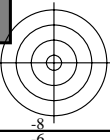
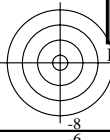
TUB-material: code=rh4ta

RN60-7N_RGB 5-103034-L0

rgb (A_j + k26_n27), 000n (k), w (l), nnn0 (m), www (n), 3D = 1

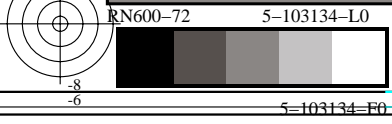
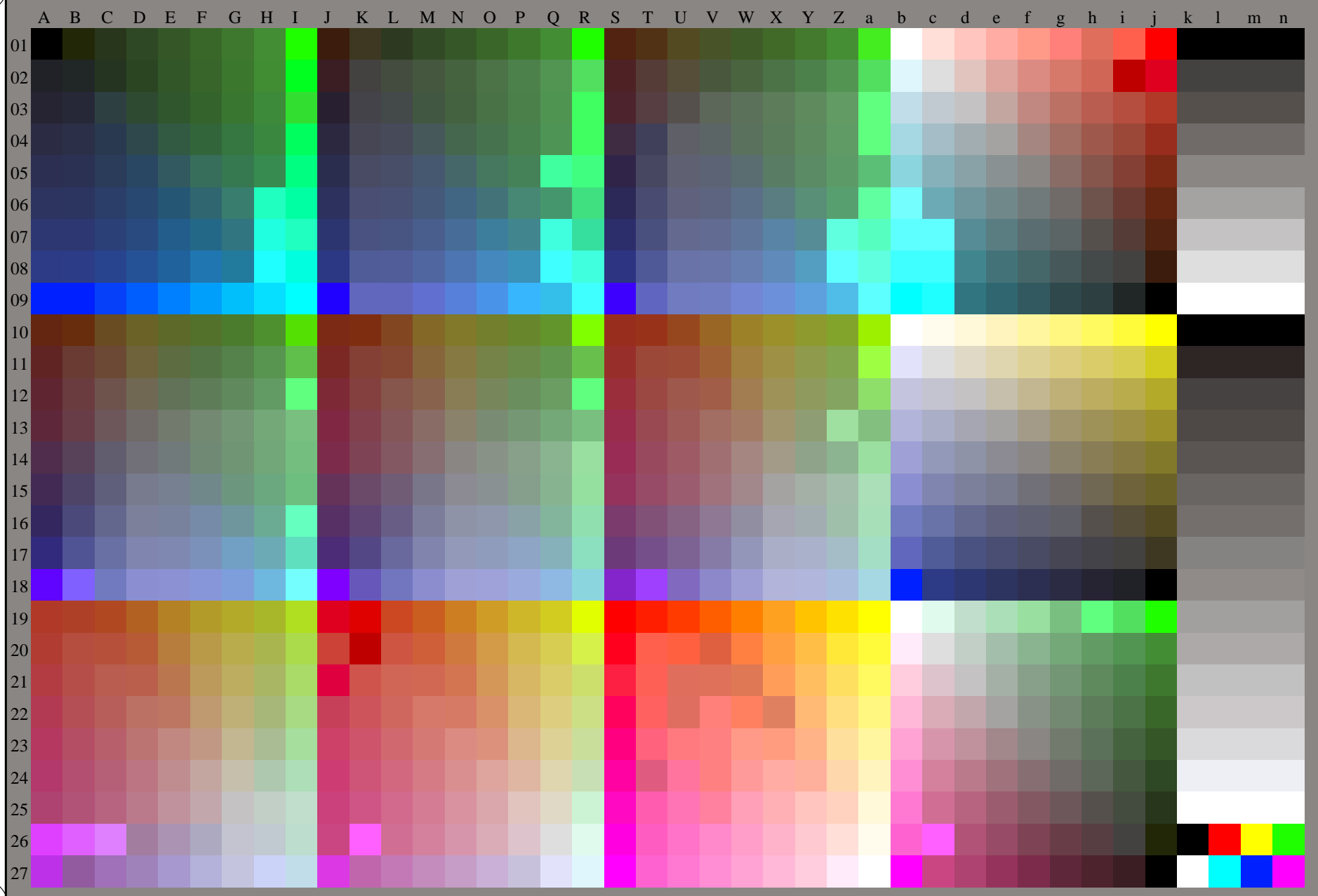
TUB-prøveplansje RN60; 1080 standard farger, cf=1
prøveplansje infølge DIN 33872

input: *rgb/cmyk* -> *rgb/cmyk*
output: ingen endring



se lignende filer: <http://130.149.60.45/~farbmetrik/RN60/RN60L0FA.TXT> / .PS
teknisk informasjon: <http://www.ps.bam.de> eller <http://130.149.60.45/~farbmetrik>

TUB registrering: 20150701-RN60/RN60L0FA.TXT /.PS TUB-material: code=rh4ta
anvendelse for måling av laserprinter output, ingen separasjon rgb* (RGB)



TUB-prøveplansje RN60; 1080 standard farger, $cf=1$
prøveplansje infølge DIN 33872, 3D=1, $de=0$, rgb^*

input: $rgb/cmyk \rightarrow rgb_{dd}$
output: 3D-linearisering til rgb^*_{dd}

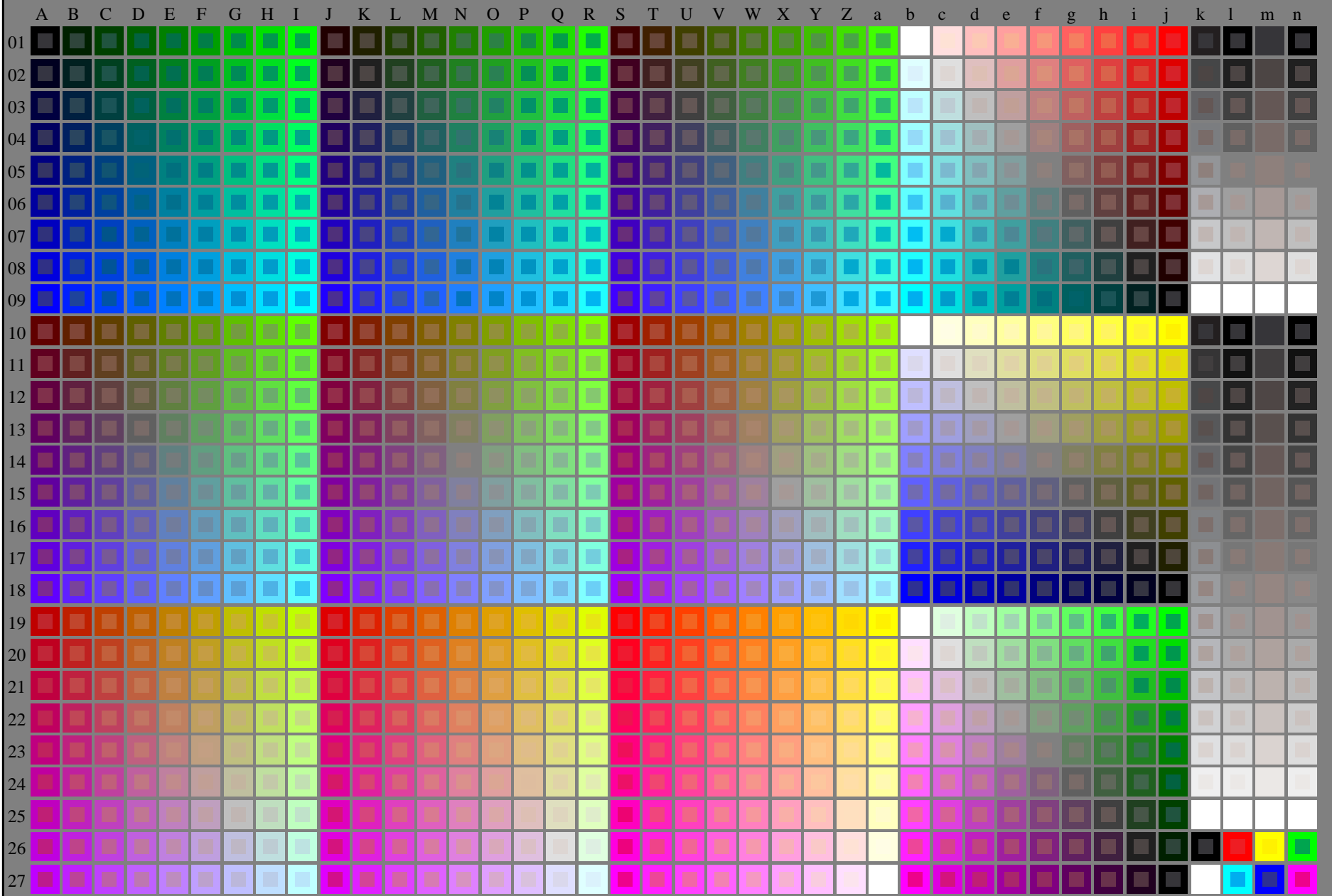


http://130.149.60.45/~farbmetrik/RN60/RN60L0FA.TXT /.PS; start output
F: 3D-linearisering RN60/RN60LJ30FA.DAT i fil (F), side 1/2

se lignende filer: <http://130.149.60.45/~farbmetrik/RN60/RN60.HTM>
teknisk informasjon: <http://www.ps.bam.de> eller <http://130.149.60.45/~farbmetrik>

TUB registrering: 20150701-RN60/RN60L0FA.TXT /.PS
anvendelse for måling av laserprinter output

TUB-material: code=rh4ta



RN600-7N_RGB 5-113034-L0

rgb (A_j + k26_n27), 000n (k), w (l), nnn0 (m), www (n), 3D = 1

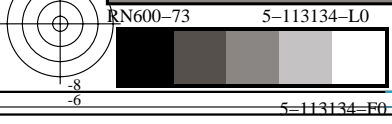
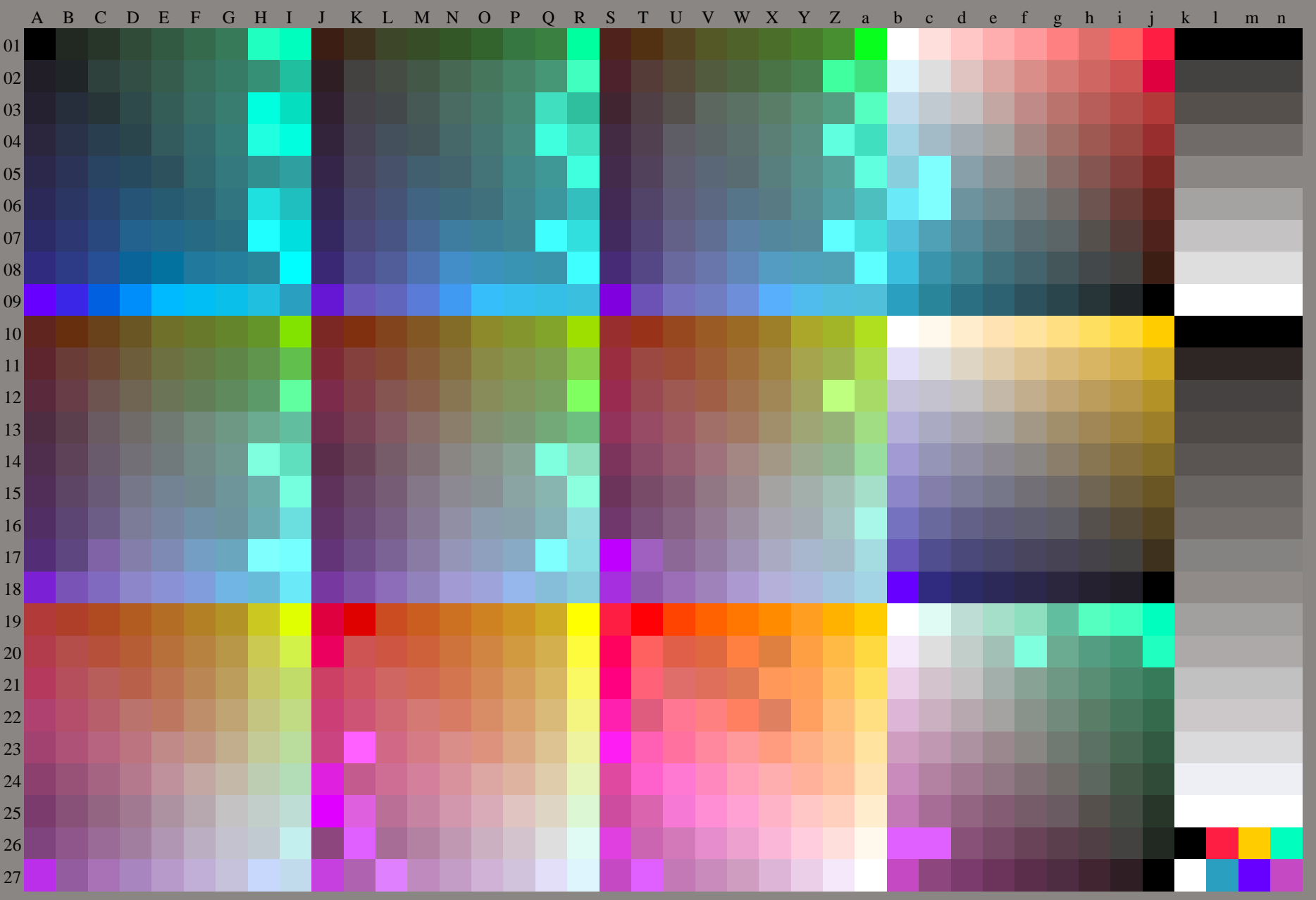
TUB-prøveplansje RN60; 1080 standard farger, cf=1
prøveplansje infølge DIN 33872

input: *rgb/cmyk* -> *rgb/cmyk*
output: ingen endring

C M Y O L V

se lignende filer: <http://130.149.60.45/~farbmetrik/RN60/RN60L0FA.TXT> / .PS
teknisk informasjon: <http://www.ps.bam.de> eller <http://130.149.60.45/~farbmetrik>

TUB registrering: 20150701-RN60/RN60L0FA.TXT /.PS TUB-material: code=rh4ta
anvendelse for måling av laserprinter output, ingen separasjon rgb* (RGB)



TUB-prøveplansje RN60; 1080 standard farger, $cf=1$
prøveplansje infølge DIN 33872, 3D=1, $de=1$, rgb^*

input: $rgb/cmyk \rightarrow rgb_{de}$
output: 3D-linearisering til rgb^*_{de}

