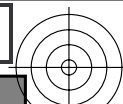
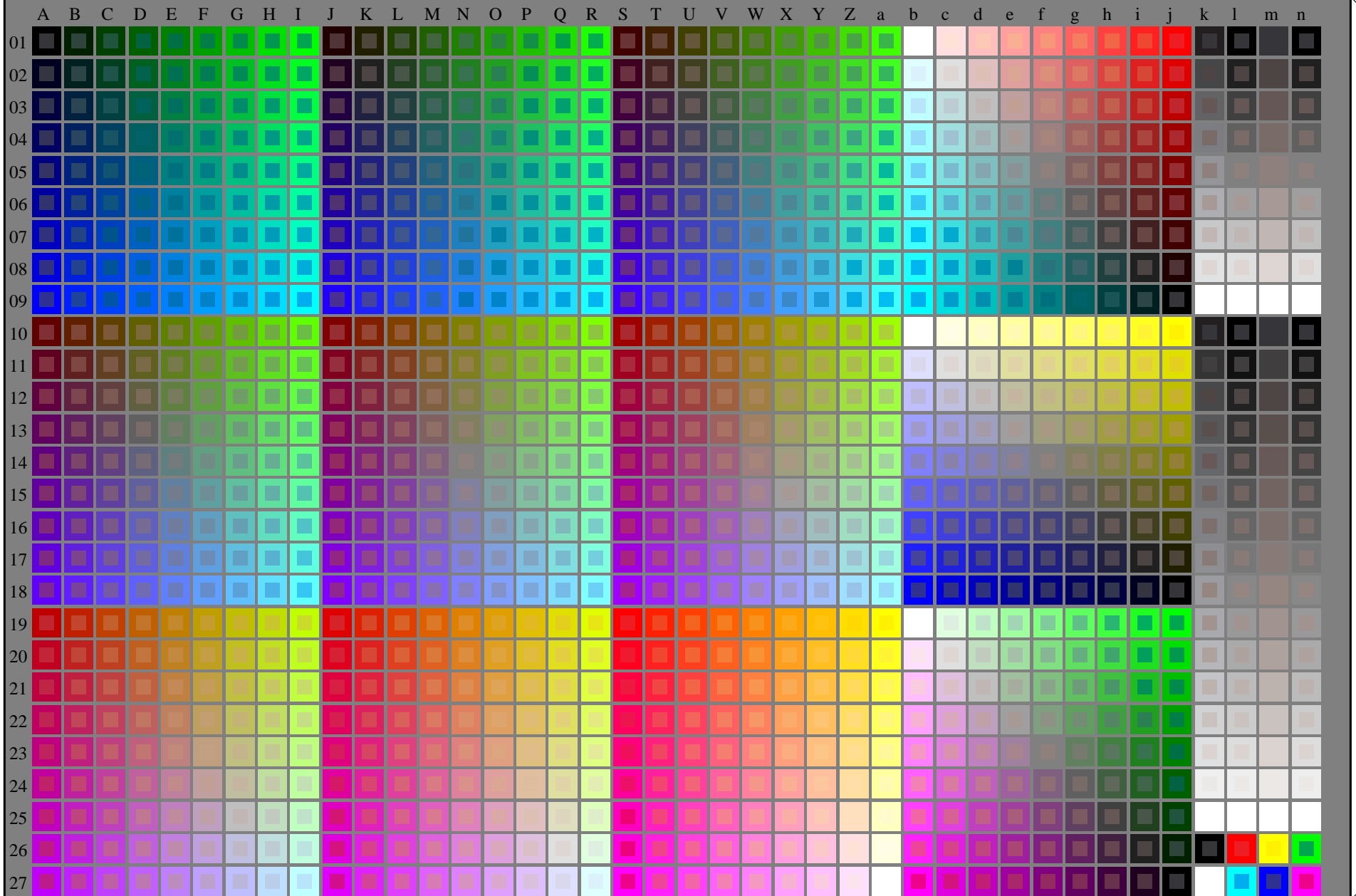


http://130.149.60.45/~farbmetrik/RN60/RN60LONP.PDF /.PS; start output
N: ingen 3D-linearisering (OL) i fil (F) eller PS-startup (S), side 1/2

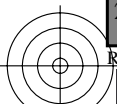


se lignende filer: <http://130.149.60.45/~farbmetrik/RN60/RN60LONP.PDF> /PS
teknisk informasjon: <http://www.ps.bam.de> eller <http://130.149.60.45/~farbmetrik>



TUB registrering: 20150701-RN60/RN60LONP.PDF /.PS
anvendelse for måling av laserprinter output

TUB-material: code=rh4ta



rgb(A_j + k26_{n27}), 000n(k), w(l), nnn0(m), www(n), 3D=0
TUB-prøveplansje RN60; 1080 standard farger, cf=1
prøveplansje infølge DIN 33872

input: rgb/cmyk -> rgb/cmyk
output: ingen endring

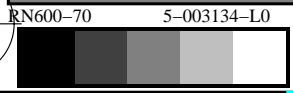
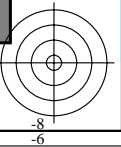
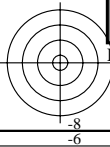
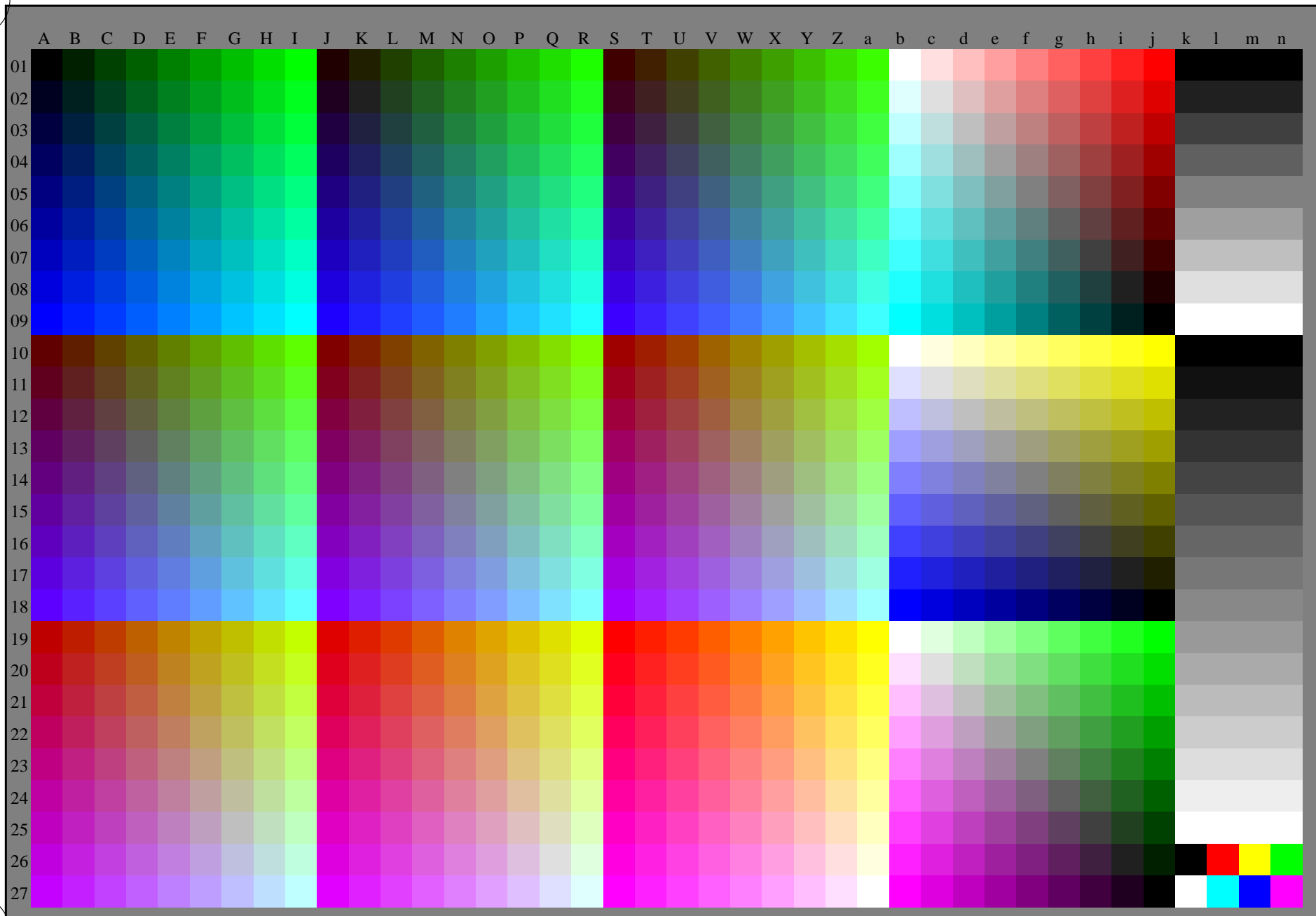


C M Y O L V



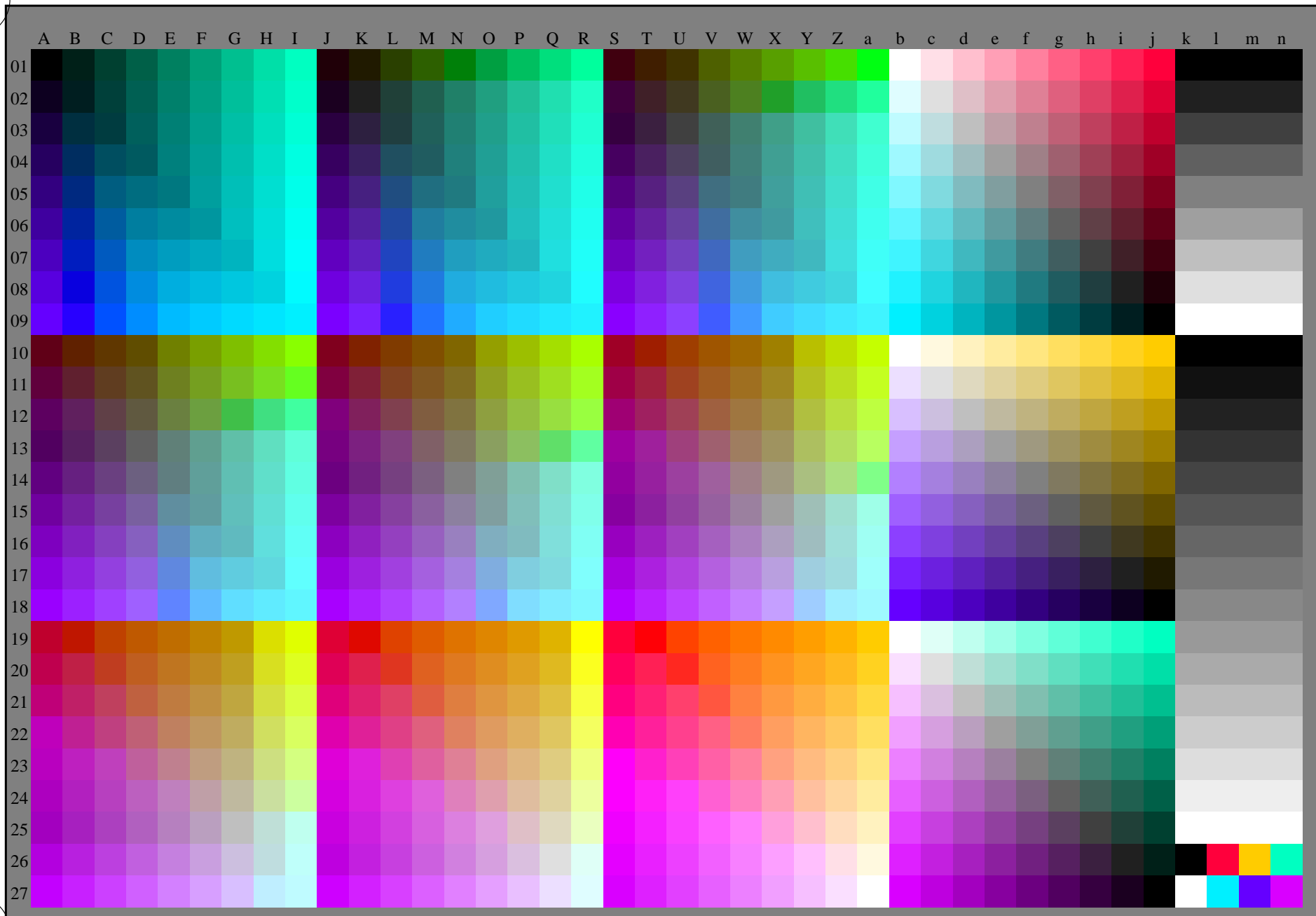
se lignende filer: <http://130.149.60.45/~farbmetrik/RN60/RN60.HTM>
teknisk informasjon: <http://www.ps.bam.de> eller <http://130.149.60.45/~farbmetrik>

TUB registrering: 20150701-RN60/RN60L0NP.PDF /.PS TUB-material: code=rh4ta
anvendelse for måling av laserprinter output, ingen separasjon rgb (RGB)



se lignende filer: <http://130.149.60.45/~farbmetrik/RN60/RN60.HTM>
teknisk informasjon: <http://www.ps.bam.de> eller <http://130.149.60.45/~farbmetrik>

TUB registrering: 20150701-RN60/RN60L0NP.PDF /.PS TUB-material: code=rh4ta
anvendelse for måling av laserprinter output, ingen separasjon rgb (RGB)



RN600-71 5-013134-L0

TUB-prøveplansje RN60; 1080 standard farger, $cf=1$
prøveplansje infølge DIN 33872, 3D=0, $de=1$, rgb

input: $rgb/cmyk \rightarrow rgb_e$
output: overføring til rgb_e

5-013134-F0