

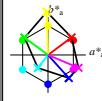
http://130.149.60.45/~farbmetrik/RN81/RN81L0N1.TXT /PS; start output
 N: ingen 3D-linearisering (OL) i fil (F) eller PS-startup (S), side 1/1

Input og output: Laserer-Reflektiv-System LRS18a

Data for ethvert apparat (d) eller
 elementefarge (e):

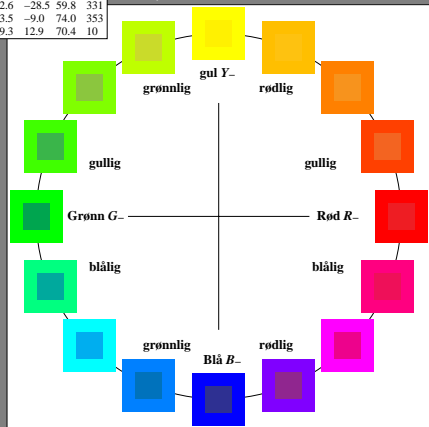
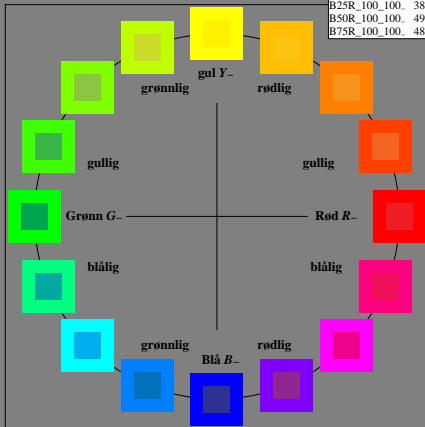
HIC^*
 fargetonetekst for fargene
 på denne siden:
 $H^*_e = R00Y_ R25Y_ \dots B75R_$

ORS20a; adapterte (a) CIELAB data					
H^*_e	$L^* = L^*_a$	a^*_a	b^*_a	$C^*_{:aba}$	$h^*_{:aba}$
R00Y_100_100_	48.4	66.1	40.2	77.3	31
R25Y_100_100_	56.8	48.0	50.5	69.6	46
R50Y_100_100_	68.6	25.0	63.9	68.6	68
R75Y_100_100_	80.6	4.8	77.2	77.3	86
Y00G_100_100_	90.2	-9.6	88.2	88.7	96
Y25G_100_100_	83.2	-18.4	79.9	81.9	102
Y50G_100_100_	73.3	-31.7	62.7	70.2	116
Y75G_100_100_	62.0	-49.7	43.2	65.8	139
G00B_100_100_	55.8	-65.2	33.8	73.4	152
G25B_100_100_	59.3	-50.3	-9.0	51.0	190
G50B_100_100_	63.0	-30.5	-42.0	51.9	234
G75B_100_100_	45.7	-5.7	-44.6	44.9	262
B00R_100_100_	27.5	25.9	-47.3	53.9	298
B25R_100_100_	38.3	52.6	-28.5	59.8	331
B50R_100_100_	49.5	73.5	-9.0	74.0	353
B75R_100_100_	48.9	69.3	12.9	70.4	10



%Omfang
 $u^*_{:rel} = 114$
 %Regularitet
 $g^*_{:H,rel} = 28$
 $g^*_{:C,rel} = 38$

LRS18a; adapterte (a) CIELAB data					
navn	$L^* = L^*_a$	a^*_a	b^*_a	$C^*_{:aba}$	$h^*_{:aba}$
R_ Ma	32.5	62.3	46.4	77.7	36
Y_ Ma	82.7	-3.1	113.9	114.0	91
G_ Ma	39.4	-61.8	45.8	76.9	143
C_ Ma	47.8	-26.8	-34.2	43.4	231
B_ Ma	10.1	55.1	-61.0	82.2	312
M_ Ma	34.5	80.6	-33.9	87.5	337
N_ Ma	6.2	0.0	0.0	0.0	0
W_ Ma	91.9	0.0	0.0	0.0	0
R_ CIE	39.9	58.7	27.9	65.0	25
Y_ CIE	81.2	-2.8	71.5	71.6	92
G_ CIE	52.2	-42.4	13.6	44.5	162
B_ CIE	30.5	1.4	-46.4	46.4	271



se følgende filer: <http://130.149.60.45/~farbmetrik/RN81/RN81.HTM>
 teknisk informasjon: <http://www.ps.bam.de> eller <http://130.149.60.45/~farbmetrik>

EN810-7N RGB 5-003034-L0

TUB-prøveplansje RN81; 16-trinns fargetonesirkel, $cf=1$
 prøveplansje infølge DIN 33872

input: rgb/cmyk \rightarrow rgb/cmyk
 output: ingen endring

TUB registrering: 20150701-RN81/RN81L0N1.TXT /PS
 anvendelse for måling av laserprinter output

TUB-material: code=matata