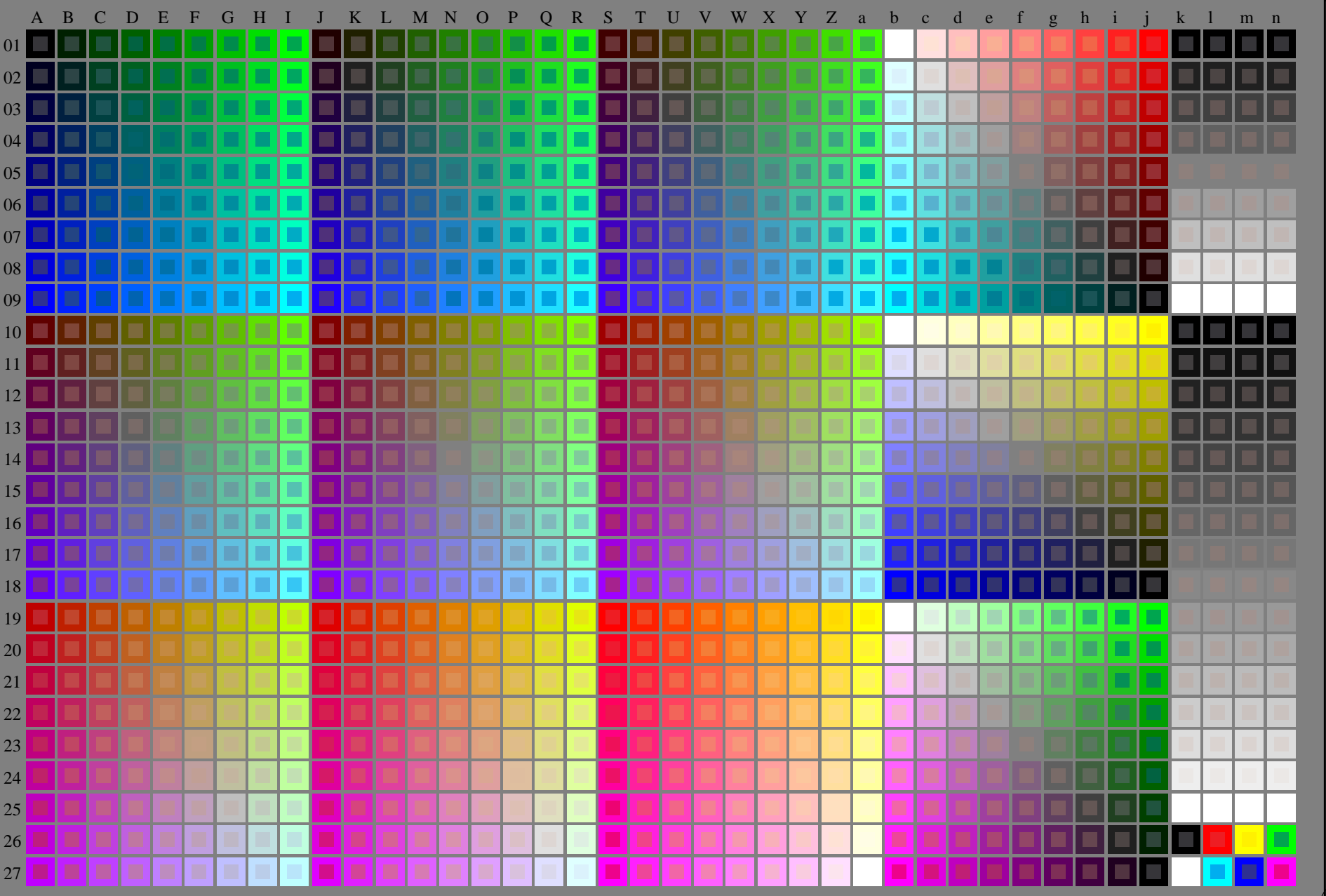


vea archivos semejantes: <http://130.149.60.45/~farbmetrik/RS58/RS58.HTM>  
información técnica: <http://www.ps.bam.de> o <http://130.149.60.45/~farbmetrik>



2-113031-L0 RS580-7N

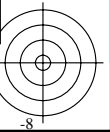
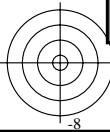
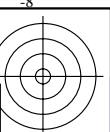
rgb + cmy0 (A..j + k26..n27), 000n (k), w (l), nnn0 (m), www (n), 3D=1

gráfico TUB-RS58; 1080 colores estándar  
gráfico según a DIN 33872, 3D=1, de=1, cmy0\*

entrada: *rgb/cmyk* -> *rgb/cmyk*  
salida: ningún cambio

TUB matrícula: 20130201-RS58/RS58L0FA.TXT /.PS  
aplicación para la medida salida en la impresión offset

TUB material: code=rh4ta

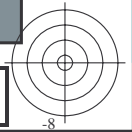
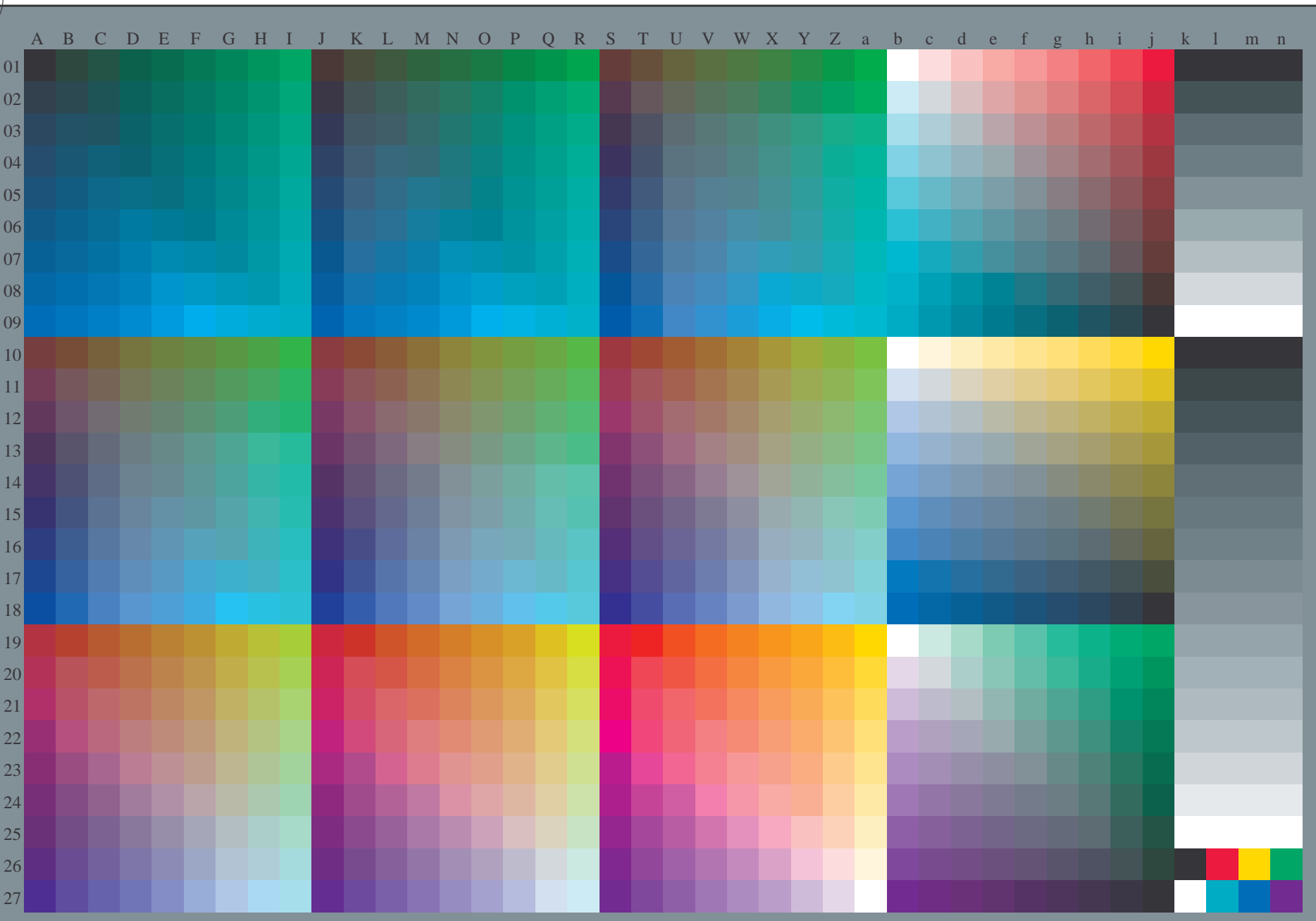




vea archivos semejantes: <http://130.149.60.45/~farbmetrik/RS58/RS58L0FA.TXT> / .PS  
información técnica: <http://www.ps.bam.de> o <http://130.149.60.45/~farbmetrik>

TUB matrícula: 20130201-RS58/RS58L0FA.TXT /.PS  
aplicación para la medida salida en la impresión offset, separación cmy0\* (CMY0)

TUB material: code=rh4ta



2-113131-L0 RS580-73

rgb (A\_n), 3D=1

gráfico TUB-RS58; 1080 colores estándar  
gráfico según a DIN 33872, 3D=1, de=1, cmy0\*

entrada: *rgb/cmyk* -> *rgb*<sub>de</sub>  
salida: 3D-linealización a *cmy0\**<sub>de</sub>

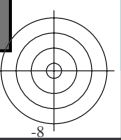
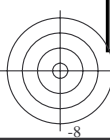
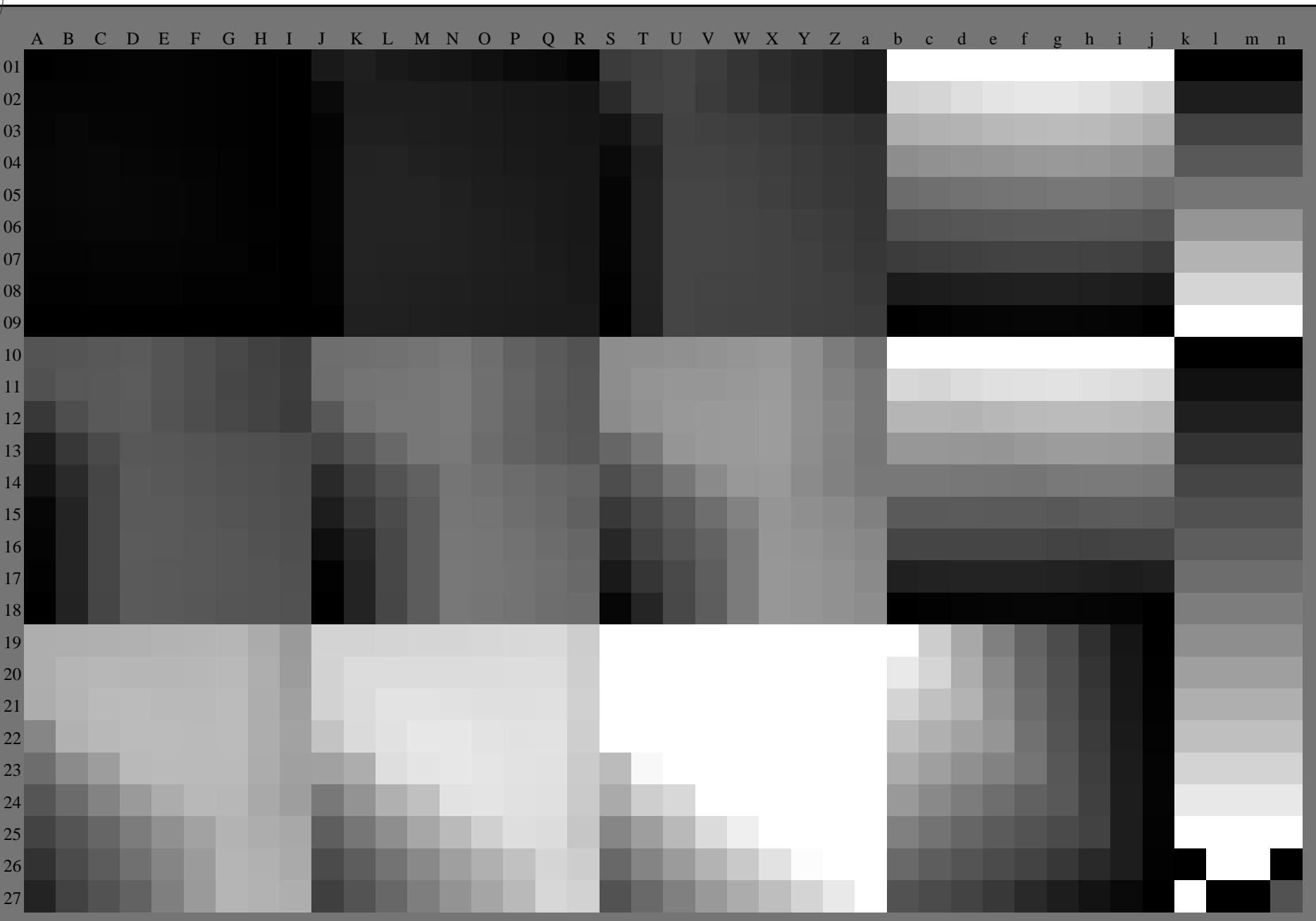
2=113131=F0

C M Y O L V



vea archivos semejantes: <http://130.149.60.45/~farbmetrik/RS58/RS58.HTM>  
información técnica: <http://www.ps.bam.de> o <http://130.149.60.45/~farbmetrik>

TUB matrícula: 20130201-RS58/RS58L0FA.TXT /.PS TUB material: code=rh4ta  
aplicación para la medida salida en la impresión offset, separación cmy0\* (CMY0)



2-113231-L0 RS580-73 ,3D=1

gráfico TUB-RS58; 1080 colores estándar  
gráfico según a DIN 33872, 3D=1, de=1, cmy0\*

entrada: *rgb/cmyk* -> *rgb*<sub>de</sub>  
salida: 3D-linealización a *cmy0*\*<sub>de</sub>

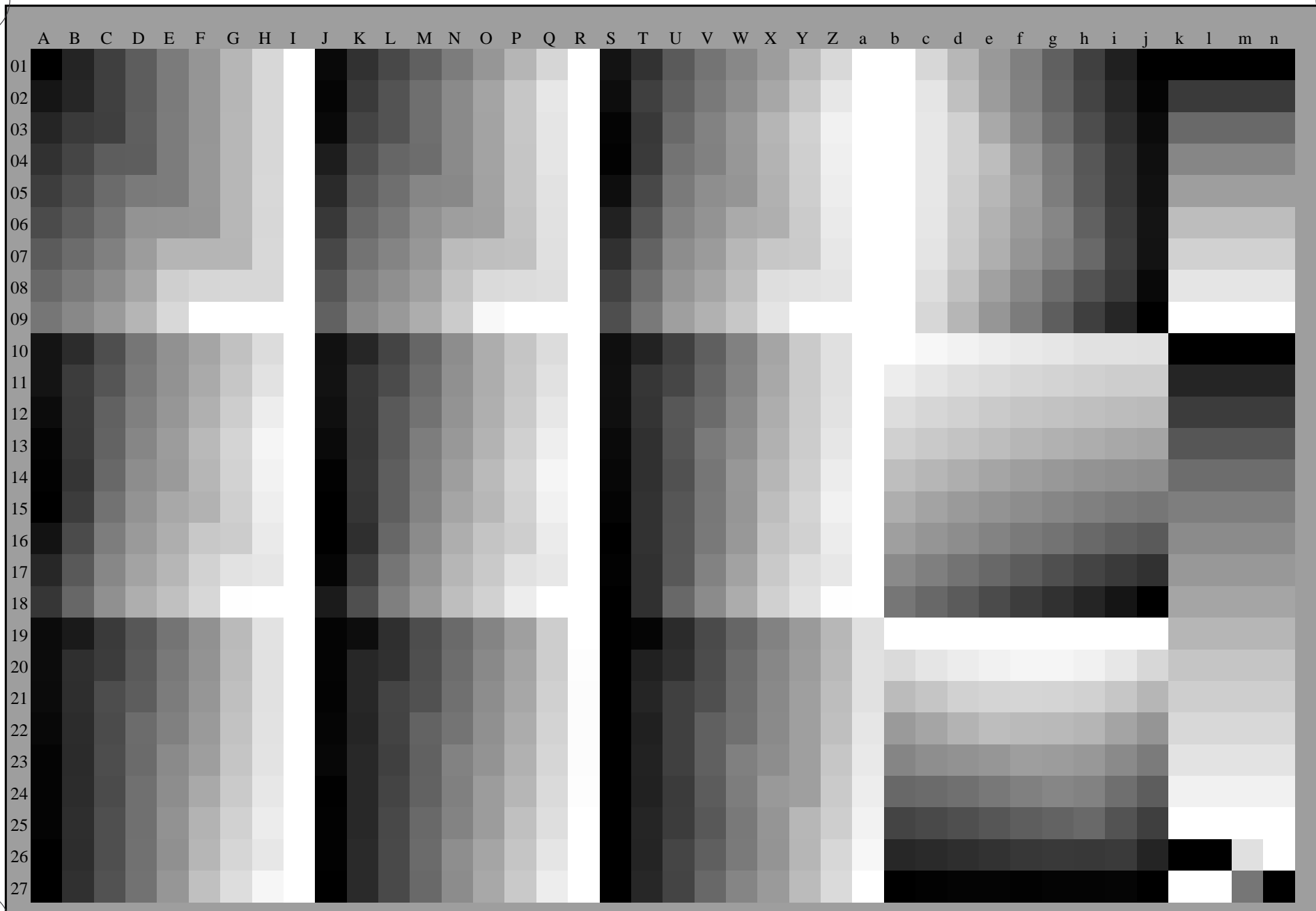
2=113231=F0

C M Y O L V



vea archivos semejantes: <http://130.149.60.45/~farbmetrik/RS58/RS58.HTM>  
información técnica: <http://www.ps.bam.de> o <http://130.149.60.45/~farbmetrik>

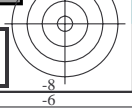
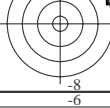
TUB matrícula: 20130201-RS58/RS58L0FA.TXT /.PS  
aplicación para la medida salida en la impresión offset, separación cmy0\* (CMY0)  
TUB material: code=rh4ta



2-113331-L0 RS580-73 ,3D=1

gráfico TUB-RS58; 1080 colores estándar  
gráfico según a DIN 33872, 3D=1, de=1, cmy0\*

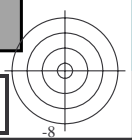
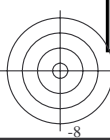
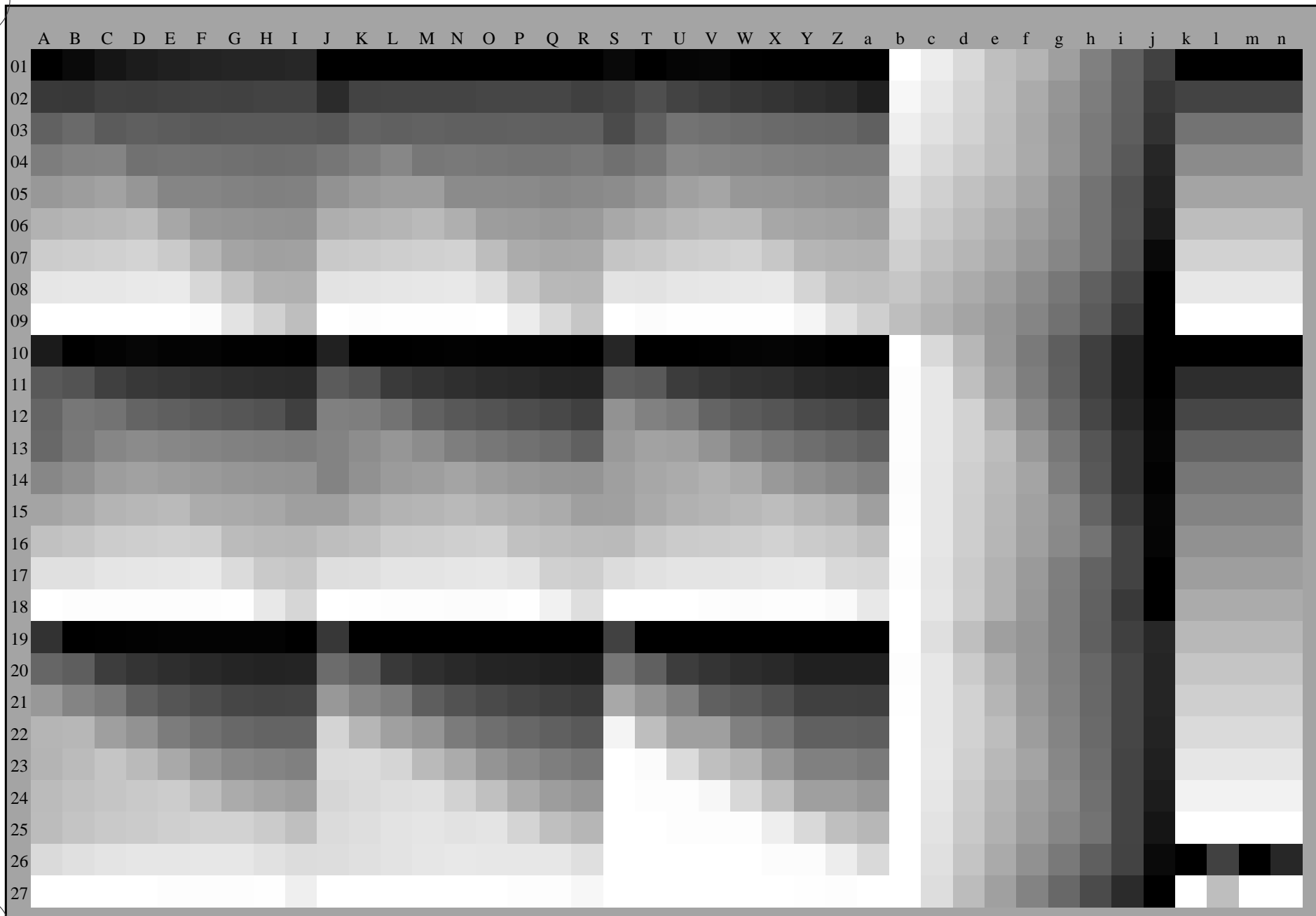
entrada: *rgb/cmyk* -> *rgb*<sub>de</sub>  
salida: 3D-linealización a *cmy0*\*<sub>de</sub>





vea archivos semejantes: <http://130.149.60.45/~farbmetrik/RS58/RS58.HTM>  
información técnica: <http://www.ps.bam.de> o <http://130.149.60.45/~farbmetrik>

TUB matrícula: 20130201-RS58/RS58L0FA.TXT /.PS TUB material: code=rh4ta  
aplicación para la medida salida en la impresión offset, separación cmy0\* (CMY0)



2-113431-L0 RS580-73

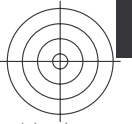
.3D=1

gráfico TUB-RS58; 1080 colores estándar  
gráfico según a DIN 33872, 3D=1, de=1, cmy0\*

entrada: *rgb/cmyk* -> *rgb*<sub>de</sub>  
salida: 3D-linealización a *cmy0*\*<sub>de</sub>

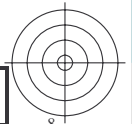
2=113431=F0

C M Y O L V



vea archivos semejantes: <http://130.149.60.45/~farbmetrik/RS58/RS58.HTM>  
información técnica: <http://www.ps.bam.de> o <http://130.149.60.45/~farbmetrik>

TUB matrícula: 20130201-RS58/RS58L0FA.TXT /.PS TUB material: code=rh4ta  
aplicación para la medida salida en la impresión offset, separación cmy0\* (CMY0)

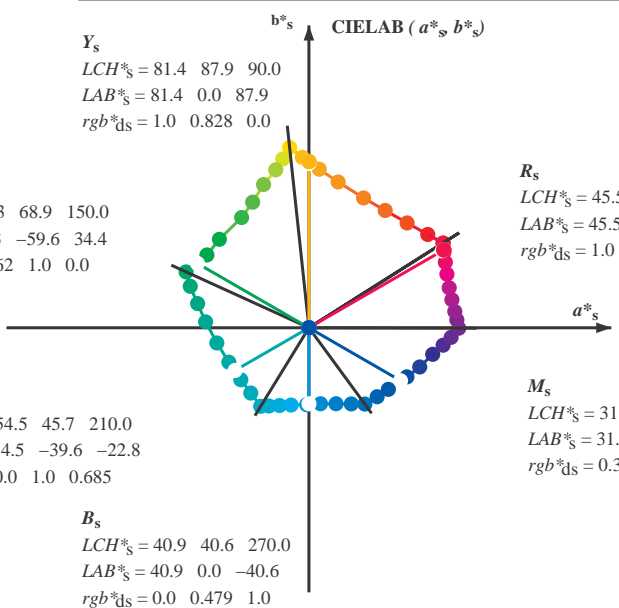
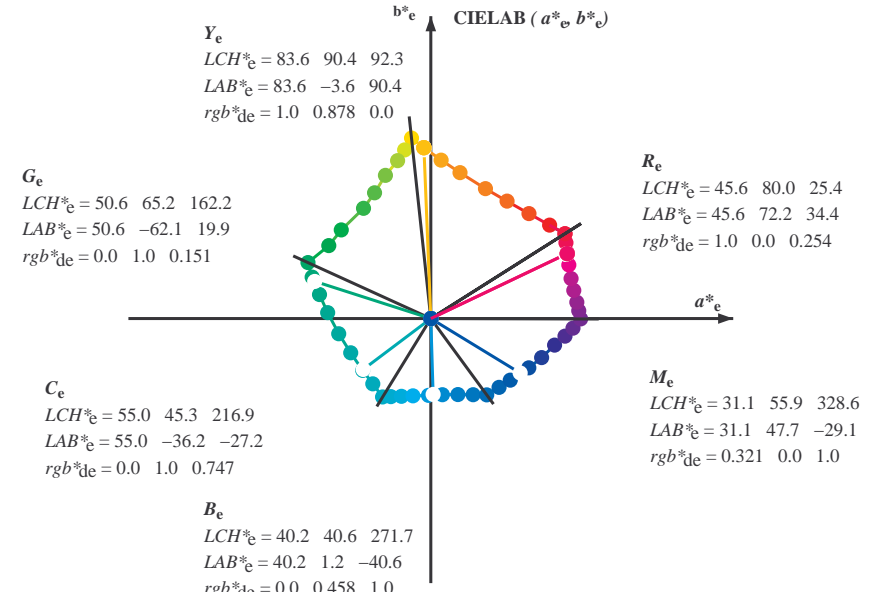
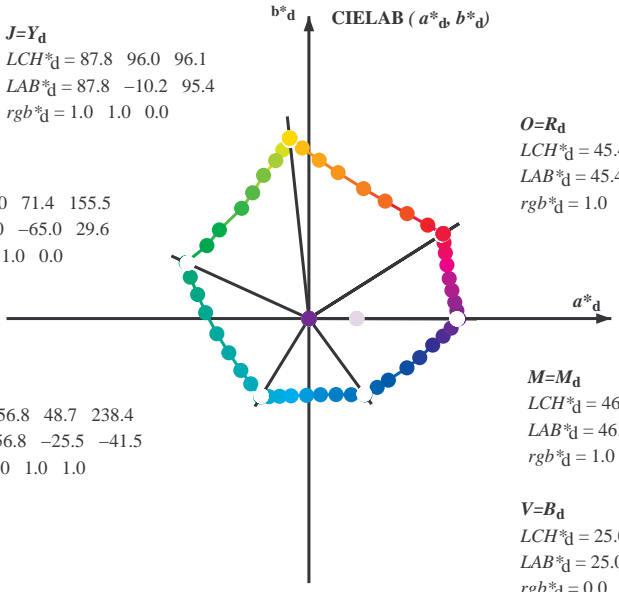


2-113531-L0 RS580-73

gráfico TUB-RS58; 1080 colores estándar  
gráfico según a DIN 33872, 3D=1, de=1, cmy0\*

entrada: *rgb/cmyk* -> *rgb*<sub>de</sub>  
salida: 3D-linealización a *cmy0*\*<sub>de</sub>

Data of Maximum color M in colorimetric system Offset standard print; separation cmy0\*, D65 for input or output; Six hue angles of the 60 degree standard colours RYGCBS:  $h_{ab,ds} = 30.0, 90.0, 150.0, 210.0, 270.0, 330.0$ ; Six hue angles of the device colours RYGCBS:  $h_{ab,d} = 32.3, 96.1, 155.5, 238.4, 306.2, 359.8$ ; Six hue angles of the elementary colours RYGCBS:  $h_{ab,e} = 25.5, 92.3, 162.2, 217.0, 271.7, 328.6$



$(a^*_d, b^*_d), (a^*_s, b^*_s), (a^*_e, b^*_e)$   
 $rgb^*_d, LCH^*_d, LAB^*_d$   
 $h_{ab,s}, rgb^*_s$   
 $h_{ab,s} = atan [ r^*_d \cos(30) + g^*_d \cos(150) ] / [ r^*_d \sin(30) + g^*_d \sin(150) + b^*_d \sin(270) ]$  (1)  
 $h_{ab,s}$   
 $s: h_{ab,s} = 30.0, 90.0, 150.0, 210.0, 270.0, 330.0, 390.0 (i=0,6)$   
 $h_{48ab,sij} = h_{ab,si} + j [h_{ab,si+1} - h_{ab,si}] / 8 (i = 0, 1, \dots, 5; j = 0, 1, \dots, 7)$  (2)  
 $h_{360ab,sij} = h_{ab,si} + j [h_{ab,si+1} - h_{ab,si}] / 60 (i = 0, 1, \dots, 5; j = 0, 1, \dots, 59)$  (3)  
 $h_{ab,e}$   
 $e: h_{ab,e} = 25.5, 92.3, 162.2, 217.0, 271.7, 328.6, 385.5 (i=0,6)$   
 $h_{48ab,eij} = h_{ab,ei} + j [h_{ab,ei+1} - h_{ab,ei}] / 8 (i = 0, 1, \dots, 5; j = 0, 1, \dots, 7)$  (4)  
 $h_{360ab,eij} = h_{ab,ei} + j [h_{ab,ei+1} - h_{ab,ei}] / 60 (i = 0, 1, \dots, 5; j = 0, 1, \dots, 59)$  (5)  
 $h_{ab}, h_{ab,d}$   
 $rgb^*_{de}$

vea archivos semejantes: http://130.149.60.45/~farbmetrik/RS58/RS58.HTM  
información técnica: http://www.ps.bam.de o http://130.149.60.45/~farbmetrik

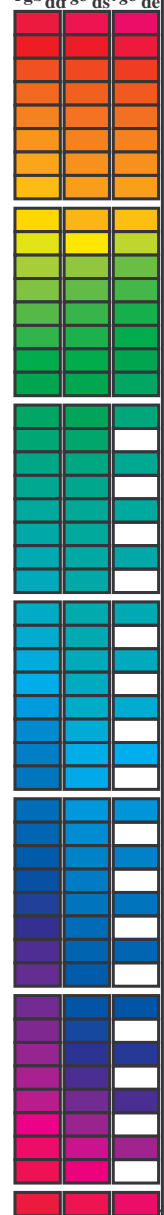
TUB matrícula: 20130201-RS58/RS58L0FA.TXT /.PS  
aplicación para la medida salida en la impresión offset, separación cmy0\* (CMY0)  
TUB material: code=rh4ta

Data of maximum color M in colorimetric system offset standard print; separation cmy0\*, D65 for input or output; Six hue angles of the 60 degree standard colours RYGBCM<sub>s</sub>: h<sub>ab,ds</sub> = 30.0, 90.0, 150.0, 210.0, 270.0, 330.0; Six hue angles of the device colours RYGBCM<sub>d</sub>: h<sub>ab,d</sub> = 32.3, 96.1, 155.5, 238.4, 306.2, 359.8; Six hue angles of the elementary colours RYGBCM<sub>e</sub>: h<sub>ab,e</sub> = 25.5, 92.3, 162.2, 217.0, 271.7, 328.6

Table with 24 columns: h<sub>ab,d</sub>, h<sub>ab,s</sub>, h<sub>ab,e</sub>, r<sub>gb</sub><sup>a</sup>, d<sub>dx64M</sub>, LAB\*<sub>ddx64M</sub> (x=LabCh), r<sub>gb</sub><sup>b</sup>, d<sub>dx361M</sub>, LAB\*<sub>ddx361M</sub> (x=LabCh), r<sub>gb</sub><sup>c</sup>, d<sub>dsx361M</sub>, LAB\*<sub>dsx361M</sub> (x=LabCh), r<sub>gb</sub><sup>d</sup>, d<sub>dex361M</sub>, LAB\*<sub>dex361M</sub> (x=LabCh), r<sub>gb</sub><sup>a</sup>, r<sub>gb</sub><sup>b</sup>, r<sub>gb</sub><sup>c</sup>, r<sub>gb</sub><sup>d</sup>

vea archivos semejantes: http://130.149.60.45/~farbmetrik/RS58/RS58.HTM  
información técnica: http://www.ps.bam.de o http://130.149.60.45/~farbmetrik

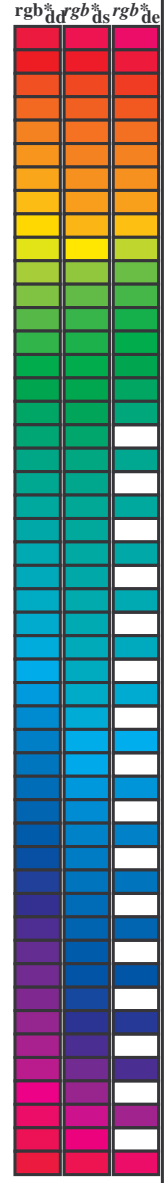
TUB matrícula: 20130201-RS58/RS58LOFA.TXT /.PS  
aplicación para la medida salida en la impresión offset, separación cmy0\* (CMY0)  
TUB material: code=rh4tra





Data of Maximum color M in colorimetric system Offset standard print; separation cmy0\*, D65 for input or output; Six hue angles of the 60 degree standard colours RYGBM<sub>s</sub>: h<sub>ab,ds</sub> = 30.0, 90.0, 150.0, 210.0, 270.0, 330.0;  
Six hue angles of the device colours RYGBM<sub>d</sub>: h<sub>ab,d</sub> = 32.3, 96.1, 155.5, 238.4, 306.2, 359.8; Six hue angles of the elementary colours RYGBM<sub>c</sub>: h<sub>ab,e</sub> = 25.5, 92.3, 162.2, 217.0, 271.7, 328.6

h <sub>ab,d</sub>	h <sub>ab,s</sub>	h <sub>ab,e</sub>	rgb* dd64M	LAB* ddx64M (x=LabCh)	rgb* dex361M	LAB* dex361M
32.3	30.0	25.4	1.0 0.0 0.0	45.4 70.9 44.8 83.9 32.3	1.0 0.0 0.255	45.7 72.2 34.4 80.0 25
38.1	37.5	33.8	1.0 0.125 0.0	48.9 62.8 49.4 79.9 38.1	1.0 0.021 0.0	46.0 69.6 45.7 83.3 33
46.8	45.0	42.1	1.0 0.25 0.0	53.6 51.9 55.5 76.0 46.8	1.0 0.183 0.0	51.1 57.9 52.5 78.1 42
56.9	52.5	50.5	1.0 0.375 0.0	59.1 40.3 62.0 74.0 56.9	1.0 0.288 0.0	55.4 48.5 57.8 75.4 49
67.1	60.0	58.8	1.0 0.5 0.0	64.9 28.9 68.6 74.5 67.1	1.0 0.398 0.0	60.3 38.3 63.5 74.1 58
78.6	67.5	67.2	1.0 0.625 0.0	72.1 15.4 77.1 78.6 78.6	1.0 0.494 0.0	64.6 29.5 68.4 74.5 66
86.2	75.0	75.6	1.0 0.75 0.0	77.9 5.4 83.8 84.0 86.2	1.0 0.592 0.0	70.2 19.3 75.2 77.6 75
92.1	82.5	83.9	1.0 0.875 0.0	83.4 -3.4 90.2 90.2 92.1	1.0 0.703 0.0	75.8 9.4 81.5 82.0 83
96.1	90.0	92.3	1.0 1.0 0.0	87.8 -10.2 95.4 96.0 96.1	1.0 0.879 0.0	83.6 -3.6 90.4 90.5 92
98.8	97.5	101.0	0.875 1.0 0.0	84.3 -13.9 89.2 90.3 98.8	0.807 1.0 0.0	82.4 -15.8 86.2 87.7 100
101.8	105.0	109.7	0.75 1.0 0.0	80.7 -17.5 83.5 85.3 101.8	0.583 1.0 0.0	73.7 -26.1 72.7 77.3 109
107.6	112.5	118.5	0.625 1.0 0.0	75.3 -24.0 75.7 79.4 107.6	0.434 1.0 0.0	68.0 -32.9 62.2 70.5 117
114.0	120.0	127.2	0.5 1.0 0.0	70.6 -29.7 66.5 72.8 114.0	0.322 1.0 0.0	62.6 -40.8 53.8 67.6 127
121.4	127.5	136.0	0.375 1.0 0.0	65.7 -35.6 58.3 68.3 121.4	0.249 1.0 0.0	58.4 -47.4 46.8 66.6 135
135.3	135.0	144.7	0.25 1.0 0.0	58.4 -47.3 46.8 66.6 135.3	0.122 1.0 0.0	54.6 -54.2 38.4 66.5 144
144.4	142.5	153.4	0.125 1.0 0.0	54.7 -53.9 38.5 66.3 144.4	0.03 1.0 0.0	51.2 -62.4 32.0 70.2 152
155.5	150.0	162.2	0.0 1.0 0.0	50.0 -65.0 29.6 71.4 155.5	0.0 1.0 0.151	50.7 -62.0 19.9 65.2 162
160.7	157.5	169.0	0.0 1.0 0.125	50.5 -62.8 21.9 66.5 160.7	0.0 1.0 0.261	51.3 -58.5 11.8 59.8 168
167.7	165.0	175.9	0.0 1.0 0.25	51.2 -58.9 12.7 60.3 167.7	0.0 1.0 0.364	52.0 -55.0 3.9 55.2 175
176.7	172.5	182.7	0.0 1.0 0.375	52.0 -54.5 3.1 54.6 176.7	0.0 1.0 0.43	52.5 -52.2 -2.0 52.3 182
189.3	180.0	189.6	0.0 1.0 0.5	52.9 -48.6 -8.0 49.3 189.3	0.0 1.0 0.502	53.0 -48.5 -8.1 49.3 189
203.2	187.5	196.4	0.0 1.0 0.625	54.0 -42.3 -18.1 46.1 203.2	0.0 1.0 0.56	53.5 -45.9 -13.1 47.8 195
217.2	195.0	203.2	0.0 1.0 0.75	55.0 -36.0 -27.4 45.3 217.2	0.0 1.0 0.626	54.1 -42.3 -18.1 46.1 203
228.3	202.5	210.1	0.0 1.0 0.875	55.8 -30.7 -34.5 46.2 228.3	0.0 1.0 0.682	54.5 -39.6 -22.6 45.7 209
238.4	210.0	216.9	0.0 1.0 1.0	56.8 -25.5 -41.5 48.7 238.4	0.0 1.0 0.747	55.0 -36.1 -27.2 45.3 216
242.9	217.5	223.8	0.0 0.875 1.0	54.1 -21.1 -41.3 46.4 242.9	0.0 1.0 0.819	55.5 -33.2 -31.3 45.8 223
249.3	225.0	230.6	0.0 0.75 1.0	50.4 -15.5 -41.1 43.9 249.3	0.0 1.0 0.904	56.1 -29.6 -36.1 46.8 230
256.9	232.5	237.5	0.0 0.625 1.0	46.5 -9.4 -40.8 41.9 256.9	0.0 1.0 0.983	56.7 -26.2 -40.5 48.4 237
268.2	240.0	244.3	0.0 0.5 1.0	41.7 -1.2 -40.6 40.6 268.2	0.0 0.847 1.0	53.3 -19.8 -41.3 45.9 244
278.6	247.5	251.2	0.0 0.375 1.0	37.3 6.1 -40.2 40.7 278.6	0.0 0.726 1.0	49.7 -14.3 -41.1 43.6 250
289.6	255.0	258.0	0.0 0.25 1.0	32.8 14.3 -40.2 42.7 289.6	0.0 0.613 1.0	46.1 -8.6 -40.8 41.9 258
299.0	262.5	264.8	0.0 0.125 1.0	28.6 22.4 -40.2 46.1 299.0	0.0 0.542 1.0	43.4 -3.9 -40.8 41.1 264
306.2	270.0	271.7	0.0 0.0 1.0	25.0 29.5 -40.4 50.0 306.2	0.0 0.458 1.0	40.3 1.2 -40.6 40.7 271
314.7	277.5	278.8	0.125 0.0 1.0	27.9 36.0 -36.4 51.2 314.7	0.0 0.378 1.0	37.5 5.9 -40.2 40.7 278
322.1	285.0	285.9	0.25 0.0 1.0	28.8 41.9 -32.5 53.1 322.1	0.0 0.292 1.0	34.4 11.6 -40.3 42.0 285
333.3	292.5	293.0	0.375 0.0 1.0	32.7 51.8 -26.0 58.0 333.3	0.0 0.211 1.0	31.5 16.8 -40.3 43.8 292
340.5	300.0	300.1	0.5 0.0 1.0	35.6 58.6 -20.7 62.1 340.5	0.0 0.106 1.0	28.1 23.5 -40.3 46.7 300
347.9	307.5	307.2	0.625 0.0 1.0	38.1 65.4 -14.0 66.9 347.9	0.0 0.009 0.0	25.3 30.1 -40.1 50.2 306
352.5	315.0	314.3	0.75 0.0 1.0	41.8 71.0 -9.2 71.6 352.5	0.0 0.12 0.0	27.8 35.8 -36.5 51.2 314
356.1	322.5	321.4	0.875 0.0 1.0	44.2 75.2 -5.0 75.3 356.1	0.0 0.231 0.0	28.7 41.1 -33.2 52.9 321
359.8	330.0	328.6	1.0 0.0 1.0	46.1 79.3 -0.2 79.3 359.8	0.0 0.322 0.0	31.1 47.8 -29.1 56.0 328
363.0	337.5	335.7	1.0 0.0 0.875	45.9 78.2 4.1 78.3 363.0	0.0 0.408 0.0	33.5 53.7 -24.7 59.1 335
366.4	345.0	342.8	1.0 0.0 0.75	45.9 77.1 8.6 77.6 366.4	0.0 0.539 0.0	36.4 60.8 -18.7 63.7 342
371.1	352.5	349.9	1.0 0.0 0.625	46.0 75.6 14.8 77.0 371.1	0.0 0.667 0.0	39.3 67.4 -12.4 68.5 349
375.9	360.0	357.0	1.0 0.0 0.5	45.9 74.2 21.1 77.1 375.9	0.0 0.736 0.0	41.4 70.5 -9.7 71.1 352
381.2	367.5	364.1	1.0 0.0 0.375	45.8 72.9 28.3 78.3 381.2	0.0 0.81 0.0	46.1 79.3 -0.1 79.3 359
385.6	375.0	371.2	1.0 0.0 0.25	45.6 72.1 34.6 80.0 385.6	0.0 0.887 0.0	46.0 76.5 11.8 77.4 368
389.3	382.5	378.3	1.0 0.0 0.125	45.5 71.4 40.1 81.9 389.3	0.0 0.967 0.0	45.9 74.1 22.0 77.3 376
392.3	390.0	385.4	1.0 0.0 0.0	45.4 70.9 44.8 83.9 392.3	1.0 0.0 0.255	45.7 72.2 34.4 80.0 385



vea archivos semejantes: <http://130.149.60.45/~farbmetrik/RS58/RS58L0FA.TXT> / .PS  
información técnica: <http://www.ps.bam.de> o <http://130.149.60.45/~farbmetrik>

TUB matrícula: 20130201-RS58/RS58L0FA.TXT / .PS  
aplicación para la medida salida en la impresión offset, separación cmy0\* (CMY0)  
TUB material: code=rh4ta

Data of Maximum color M in colorimetric system Offset standard print; separation cmy0\*, D65 for input or output; Six hue angles of the 60 degree standard colours RYGBM<sub>s</sub>: h<sub>ab,ds</sub> = 30.0, 90.0, 150.0, 210.0, 270.0, 330.0;  
Six hue angles of the device colours RYGBM<sub>d</sub>: h<sub>ab,d</sub> = 32.3, 96.1, 155.5, 238.4, 306.2, 359.8; Six hue angles of the elementary colours RYGBM<sub>e</sub>: h<sub>ab,e</sub> = 25.5, 92.3, 162.2, 217.0, 271.7, 328.6

h <sub>ab,d</sub>	h <sub>ab,s</sub>	h <sub>ab,e</sub>	rgb* dd361M	LAB* ddx361Mi (x=LabCh)	R <sub>d</sub>	rgb* ds361Mi	LAB* dsx361Mi (x=LabCh)	R <sub>s</sub>	rgb* dd361Mi	LAB* de361Mi	R <sub>e</sub>	rgb* dd361Mi	rgb* dd	rgb* ds	rgb* de
32	30	25	1.0 0.0 0.0	45.4 70.9 44.8 83.9 32		1.0 0.0 0.0	0.096 45.5 71.4 41.2 82.4 30		1.0 0.0 0.0	0.0 0.0 0.0		1.0 0.0 0.0			
33	31	26	1.0 0.016 0.0	45.9 69.8 45.5 83.4 33		1.0 0.0 0.055	45.5 71.2 42.8 83.1 31		1.0 0.017 0.0		1.0 0.0 0.218	45.6 72.0 36.1 80.6 26	1.0 0.017 0.0		
33	32	27	1.0 0.033 0.0	46.3 68.8 46.1 82.8 33		1.0 0.0 0.013	45.5 71.0 44.4 83.7 32		1.0 0.033 0.0		1.0 0.0 0.18	45.6 71.8 37.7 81.1 27	1.0 0.033 0.0		
34	33	28	1.0 0.05 0.0	46.8 67.7 46.8 82.3 34		1.0 0.015 0.0	45.9 70.0 45.5 83.5 33		1.0 0.05 0.0		1.0 0.0 0.142	45.6 71.6 39.4 81.7 28	1.0 0.05 0.0		
35	34	29	1.0 0.066 0.0	47.3 66.6 47.4 81.8 35		1.0 0.036 0.0	46.5 68.6 46.3 82.8 34		1.0 0.067 0.0		1.0 0.0 0.099	45.5 71.4 41.1 82.4 29	1.0 0.067 0.0		
36	35	31	1.0 0.083 0.0	47.7 65.5 48.0 81.2 36		1.0 0.057 0.0	47.1 67.3 47.1 82.1 35		1.0 0.083 0.0		1.0 0.0 0.053	45.5 71.2 42.9 83.1 31	1.0 0.083 0.0		
36	36	32	1.0 0.1 0.0	48.2 64.4 48.5 80.7 36		1.0 0.079 0.0	47.6 65.9 47.9 81.4 36		1.0 0.1 0.0		1.0 0.0 0.006	45.5 71.0 44.6 83.8 32	1.0 0.1 0.0		
37	37	33	1.0 0.116 0.0	48.6 63.3 49.1 80.2 37		1.0 0.1 0.0	48.2 64.5 48.6 80.7 37		1.0 0.117 0.0		1.0 0.021 0.0	46.0 69.6 45.7 83.3 33	1.0 0.117 0.0		
38	38	34	1.0 0.133 0.0	49.2 62.1 49.8 79.6 38		1.0 0.121 0.0	48.8 63.1 49.3 80.1 38		1.0 0.133 0.0		1.0 0.044 0.0	46.7 68.1 46.6 82.5 34	1.0 0.133 0.0		
39	39	35	1.0 0.15 0.0	49.8 60.7 50.7 79.1 39		1.0 0.137 0.0	49.4 61.8 50.1 79.6 39		1.0 0.15 0.0		1.0 0.068 0.0	47.4 66.6 47.5 81.8 35	1.0 0.15 0.0		
41	40	36	1.0 0.166 0.0	50.5 59.2 51.6 78.6 41		1.0 0.151 0.0	49.9 60.6 50.9 79.1 40		1.0 0.167 0.0		1.0 0.092 0.0	48.0 65.0 48.3 81.0 36	1.0 0.167 0.0		
42	41	37	1.0 0.183 0.0	51.1 57.8 52.5 78.1 42		1.0 0.166 0.0	50.5 59.4 51.6 78.7 41		1.0 0.183 0.0		1.0 0.116 0.0	48.7 63.5 49.1 80.2 37	1.0 0.183 0.0		
43	42	38	1.0 0.2 0.0	51.7 56.3 53.3 77.5 43		1.0 0.18 0.0	51.0 58.1 52.3 78.2 42		1.0 0.2 0.0		1.0 0.135 0.0	49.3 62.0 49.9 79.6 38	1.0 0.2 0.0		
44	43	39	1.0 0.216 0.0	52.4 54.9 54.0 77.0 44		1.0 0.194 0.0	51.6 56.9 53.0 77.8 43		1.0 0.217 0.0		1.0 0.151 0.0	49.9 60.7 50.8 79.1 39	1.0 0.217 0.0		
45	44	41	1.0 0.233 0.0	53.0 53.4 54.8 76.5 45		1.0 0.209 0.0	52.1 55.6 53.7 77.3 44		1.0 0.233 0.0		1.0 0.167 0.0	50.5 59.3 51.7 78.6 41	1.0 0.233 0.0		
46	45	42	1.0 0.25 0.0	53.6 51.9 55.5 76.0 46		1.0 0.223 0.0	52.7 54.4 54.4 76.9 45		1.0 0.25 0.0		1.0 0.183 0.0	51.1 57.9 52.5 78.1 42	1.0 0.25 0.0		
48	46	43	1.0 0.266 0.0	54.4 50.4 56.5 75.7 48		1.0 0.237 0.0	53.2 53.1 55.0 76.4 46		1.0 0.267 0.0		1.0 0.198 0.0	51.7 56.5 53.2 77.6 43	1.0 0.267 0.0		
49	47	44	1.0 0.283 0.0	55.1 48.9 57.4 75.4 49		1.0 0.251 0.0	53.7 51.8 55.6 76.0 47		1.0 0.283 0.0		1.0 0.214 0.0	52.3 55.1 54.0 77.1 44	1.0 0.283 0.0		
50	48	45	1.0 0.3 0.0	55.8 47.4 58.4 75.2 50		1.0 0.264 0.0	54.3 50.7 56.3 75.8 48		1.0 0.3 0.0		1.0 0.23 0.0	52.9 53.7 54.7 76.6 45	1.0 0.3 0.0		
52	49	46	1.0 0.316 0.0	56.6 45.8 59.2 74.9 52		1.0 0.276 0.0	54.8 49.6 57.1 75.6 49		1.0 0.317 0.0		1.0 0.246 0.0	53.5 52.3 55.4 76.1 46	1.0 0.317 0.0		
53	50	47	1.0 0.333 0.0	57.3 44.2 60.1 74.6 53		1.0 0.288 0.0	55.4 48.5 57.8 75.4 50		1.0 0.333 0.0		1.0 0.261 0.0	54.2 51.0 56.2 75.9 47	1.0 0.333 0.0		
54	51	48	1.0 0.35 0.0	58.0 42.7 60.9 74.4 54		1.0 0.301 0.0	55.9 47.3 58.5 75.2 51		1.0 0.35 0.0		1.0 0.274 0.0	54.8 49.8 57.0 75.6 48	1.0 0.35 0.0		
56	52	49	1.0 0.366 0.0	58.8 41.1 61.7 74.1 56		1.0 0.313 0.0	56.5 46.2 59.1 75.0 52		1.0 0.367 0.0		1.0 0.288 0.0	55.4 48.5 57.8 75.4 49	1.0 0.367 0.0		
57	53	51	1.0 0.383 0.0	59.5 39.5 62.5 74.0 57		1.0 0.326 0.0	57.0 45.0 59.8 74.8 53		1.0 0.383 0.0		1.0 0.302 0.0	56.0 47.2 58.5 75.2 51	1.0 0.383 0.0		
59	54	52	1.0 0.4 0.0	60.3 38.1 63.5 74.1 59		1.0 0.338 0.0	57.6 43.9 60.4 74.6 54		1.0 0.4 0.0		1.0 0.316 0.0	56.6 45.9 59.3 75.0 52	1.0 0.4 0.0		
60	55	53	1.0 0.416 0.0	61.0 36.6 64.5 74.1 60		1.0 0.35 0.0	58.1 42.7 61.0 74.4 55		1.0 0.417 0.0		1.0 0.33 0.0	57.2 44.6 60.0 74.8 53	1.0 0.417 0.0		
61	56	54	1.0 0.433 0.0	61.8 35.1 65.4 74.2 61		1.0 0.363 0.0	58.6 41.5 61.5 74.2 56		1.0 0.433 0.0		1.0 0.343 0.0	57.8 43.3 60.6 74.5 54	1.0 0.433 0.0		
63	57	55	1.0 0.45 0.0	62.6 33.6 66.2 74.3 63		1.0 0.375 0.0	59.2 40.3 62.1 74.0 57		1.0 0.45 0.0		1.0 0.357 0.0	58.4 42.0 61.3 74.3 55	1.0 0.45 0.0		
64	58	56	1.0 0.466 0.0	63.3 32.0 67.1 74.4 64		1.0 0.387 0.0	59.8 39.3 62.8 74.1 58		1.0 0.467 0.0		1.0 0.371 0.0	59.0 40.7 61.9 74.1 56	1.0 0.467 0.0		
65	59	57	1.0 0.483 0.0	64.1 30.5 67.9 74.4 65		1.0 0.4 0.0	60.3 38.2 63.5 74.1 59		1.0 0.483 0.0		1.0 0.385 0.0	59.6 39.5 62.7 74.1 57	1.0 0.483 0.0		
67	60	58	1.0 0.5 0.0	64.9 28.9 68.6 74.5 67		1.0 0.412 0.0	60.9 37.1 64.2 74.2 60		1.0 0.5 0.0		1.0 0.398 0.0	60.3 38.3 63.5 74.1 58	1.0 0.5 0.0		
68	61	60	1.0 0.516 0.0	65.8 27.2 69.9 75.0 68		1.0 0.424 0.0	61.4 36.0 64.9 74.2 61		1.0 0.517 0.0		1.0 0.412 0.0	60.9 37.1 64.2 74.2 60	1.0 0.517 0.0		
70	62	61	1.0 0.533 0.0	66.8 25.5 71.1 75.6 70		1.0 0.436 0.0	62.0 34.9 65.6 74.3 62		1.0 0.533 0.0		1.0 0.426 0.0	61.5 35.8 65.0 74.2 61	1.0 0.533 0.0		
71	63	62	1.0 0.55 0.0	67.7 23.8 72.3 76.1 71		1.0 0.449 0.0	62.6 33.7 66.2 74.3 63		1.0 0.55 0.0		1.0 0.439 0.0	62.1 34.6 65.7 74.3 62	1.0 0.55 0.0		
73	64	63	1.0 0.566 0.0	68.7 22.0 73.5 76.7 73		1.0 0.461 0.0	63.1 32.6 66.9 74.4 64		1.0 0.567 0.0		1.0 0.453 0.0	62.8 33.3 66.4 74.3 63	1.0 0.567 0.0		
74	65	64	1.0 0.583 0.0	69.7 20.2 74.6 77.3 74		1.0 0.473 0.0	63.7 31.5 67.5 74.4 65		1.0 0.583 0.0		1.0 0.467 0.0	63.4 32.1 67.1 74.4 64	1.0 0.583 0.0		
76	66	65	1.0 0.6 0.0	70.6 18.3 75.6 77.8 76		1.0 0.486 0.0	64.2 30.3 68.0 74.5 66		1.0 0.6 0.0		1.0 0.48 0.0	64.0 30.8 67.8 74.5 65	1.0 0.6 0.0		
77	67	66	1.0 0.616 0.0	71.6 16.4 76.6 78.4 77		1.0 0.498 0.0	64.8 29.1 68.6 74.5 67		1.0 0.617 0.0		1.0 0.494 0.0	64.6 29.5 68.4 74.5 66	1.0 0.617 0.0		
79	68	67	1.0 0.633 0.0	72.5 14.8 77.6 79.0 79		1.0 0.509 0.0	65.4 28.0 69.4 74.8 68		1.0 0.633 0.0		1.0 0.507 0.0	65.3 28.2 69.2 74.8 67	1.0 0.633 0.0		
80	69	68	1.0 0.65 0.0	73.2 13.6 78.5 79.7 80		1.0 0.52 0.0	66.1 26.9 70.2 75.2 69		1.0 0.65 0.0		1.0 0.519 0.0	66.0 27.0 70.1 75.2 68	1.0 0.65 0.0		
81	70	70	1.0 0.666 0.0	74.0 12.3 79.5 80.4 81		1.0 0.531 0.0	66.7 25.8 71.0 75.6 70		1.0 0.667 0.0		1.0 0.531 0.0	66.7 25.8 71.0 75.6 70	1.0 0.667 0.0		
82	71	71	1.0 0.683 0.0	74.8 11.0 80.4 81.1 82		1.0 0.542 0.0	67.3 24.7 71.8 75.9 71		1.0 0.683 0.0		1.0 0.543 0.0	67.4 24.6 71.9 76.0 71	1.0 0.683 0.0		
83	72	72	1.0 0.7 0.0	75.6 9.6 81.3 81.9 83		1.0 0.553 0.0	67.9 23.6 72.6 76.3 72		1.0 0.7 0.0		1.0 0.555 0.0	68.1 23.3 72.8 76.4 72	1.0 0.7 0.0		
84	73	73	1.0 0.716 0.0	76.3 8.3 82.2 82.6 84		1.0 0.564 0.0	68.6 22.4 73.3 76.6 73		1.0 0.717 0.0		1.0 0.568 0.0	68.8 22.0 73.6 76.8 73	1.0 0.717 0.0		
85	74	74	1.0 0.733 0.0	77.1 6.9 83.0 83.3 85		1.0 0.574 0.0	69.2 21.2 74.0 77.0 74		1.0 0.733 0.0		1.0 0.58 0.0	69.5 20.6 74.4 77.2 74	1.0 0.733 0.0		
86	75	75	1.0 0.75 0.0	77.9 5.4 83.8 84.0 86		1.0 0.585 0.0	69.8 20.0 74.7 77.4 75		1.0 0.75 0.0		1.0 0.592 0.0	70.2 19.3 75.2 77.6 75	1.0 0.75 0.0		

vea archivos semejantes: <http://130.149.60.45/~farbmetrik/RS58/RS58.HTM>  
información técnica: <http://www.ps.bam.de> o <http://130.149.60.45/~farbmetrik>

TUB matrícula: 20130201-RS58/RS58LOFA.TXT /.PS  
aplicación para la medida salida en la impresión offset, separación cmy0\* (CMY0)  
TUB material: code=rh4ta

Data of Maximum color M in colorimetric system Offset standard print; separation cmy0\*; D65 for input or output; Six hue angles of the 60 degree standard colours RYGCBM<sub>s</sub>: h<sub>ab,ds</sub> = 30.0, 90.0, 150.0, 210.0, 270.0, 330.0;  
Six hue angles of the device colours RYGCBM<sub>d</sub>: h<sub>ab,d</sub> = 32.3, 96.1, 155.5, 238.4, 306.2, 359.8; Six hue angles of the elementary colours RYGCBM<sub>e</sub>: h<sub>ab,e</sub> = 25.5, 92.3, 162.2, 217.0, 271.7, 328.6

h <sub>ab,d</sub>	h <sub>ab,s</sub>	h <sub>ab,e</sub>	rgb* dd361M	LAB* ddx361Mi (x=LabCh)	rgb* ds361Mi	LAB* dsx361Mi (x=LabCh)	rgb* dd361Mi	LAB* dex361Mi (x=LabCh)	rgb* dd361Mi	LAB* dex361Mi (x=LabCh)	rgb* dd361Mi	LAB* dex361Mi (x=LabCh)
86	75	75	1.0 0.75 0.0	77.9 5.4 83.8 84.0 86	1.0 0.585 0.0	69.8 20.0 74.7 77.4 75	1.0 0.75 0.0	1.0 0.592 0.0	70.2 19.3 75.2 77.6 75	1.0 0.75 0.0	1.0 0.75 0.0	
87	76	76	1.0 0.766 0.0	78.6 4.3 84.7 84.8 87	1.0 0.596 0.0	70.5 18.8 75.4 77.7 76	1.0 0.767 0.0	1.0 0.604 0.0	70.9 17.9 75.9 78.0 76	1.0 0.767 0.0	1.0 0.767 0.0	
87	77	77	1.0 0.783 0.0	79.4 3.2 85.6 85.7 87	1.0 0.607 0.0	71.1 17.6 76.1 78.1 77	1.0 0.783 0.0	1.0 0.616 0.0	71.6 16.5 76.6 78.4 77	1.0 0.783 0.0	1.0 0.783 0.0	
88	78	78	1.0 0.8 0.0	80.1 2.0 86.5 86.5 88	1.0 0.618 0.0	71.7 16.3 76.7 78.5 78	1.0 0.8 0.0	1.0 0.63 0.0	72.4 15.1 77.4 78.9 78	1.0 0.8 0.0	1.0 0.8 0.0	
89	79	80	1.0 0.816 0.0	80.8 0.8 87.3 87.3 89	1.0 0.631 0.0	72.4 15.1 77.5 78.9 79	1.0 0.817 0.0	1.0 0.648 0.0	73.2 13.8 78.5 79.7 80	1.0 0.817 0.0	1.0 0.817 0.0	
90	80	81	1.0 0.833 0.0	81.6 -0.3 88.2 88.2 90	1.0 0.647 0.0	73.2 13.8 78.4 79.6 80	1.0 0.833 0.0	1.0 0.667 0.0	74.1 12.3 79.5 80.5 81	1.0 0.833 0.0	1.0 0.833 0.0	
91	81	82	1.0 0.85 0.0	82.3 -1.5 89.0 89.0 91	1.0 0.664 0.0	73.9 12.6 79.4 80.4 81	1.0 0.85 0.0	1.0 0.685 0.0	74.9 10.9 80.5 81.3 82	1.0 0.85 0.0	1.0 0.85 0.0	
91	82	83	1.0 0.866 0.0	83.1 -2.8 89.8 89.8 91	1.0 0.68 0.0	74.7 11.3 80.3 81.1 82	1.0 0.867 0.0	1.0 0.703 0.0	75.8 9.4 81.5 82.0 83	1.0 0.867 0.0	1.0 0.867 0.0	
92	83	84	1.0 0.883 0.0	83.7 -3.8 90.5 90.6 92	1.0 0.697 0.0	75.5 10.0 81.2 81.8 83	1.0 0.883 0.0	1.0 0.721 0.0	76.6 7.9 82.4 82.8 84	1.0 0.883 0.0	1.0 0.883 0.0	
92	84	85	1.0 0.9 0.0	84.3 -4.7 91.3 91.4 92	1.0 0.713 0.0	76.2 8.6 82.0 82.5 84	1.0 0.9 0.0	1.0 0.74 0.0	77.5 6.4 83.4 83.6 85	1.0 0.9 0.0	1.0 0.9 0.0	
93	85	86	1.0 0.916 0.0	84.9 -5.6 92.0 92.2 93	1.0 0.729 0.0	77.0 7.2 82.9 83.2 85	1.0 0.917 0.0	1.0 0.76 0.0	78.4 4.8 84.4 84.6 86	1.0 0.917 0.0	1.0 0.917 0.0	
94	86	87	1.0 0.933 0.0	85.5 -6.5 92.7 92.9 94	1.0 0.746 0.0	77.7 5.9 83.7 83.9 86	1.0 0.933 0.0	1.0 0.784 0.0	79.4 3.2 85.7 85.7 87	1.0 0.933 0.0	1.0 0.933 0.0	
94	87	88	1.0 0.95 0.0	86.0 -7.4 93.4 93.7 94	1.0 0.766 0.0	78.6 4.4 84.7 84.8 87	1.0 0.95 0.0	1.0 0.807 0.0	80.5 1.6 86.9 86.9 88	1.0 0.95 0.0	1.0 0.95 0.0	
95	88	90	1.0 0.966 0.0	86.6 -8.3 94.1 94.5 95	1.0 0.787 0.0	79.6 3.0 85.8 85.9 88	1.0 0.967 0.0	1.0 0.831 0.0	81.5 0.0 88.1 88.1 90	1.0 0.967 0.0	1.0 0.967 0.0	
95	89	91	1.0 0.983 0.0	87.2 -9.2 94.8 95.2 95	1.0 0.808 0.0	80.5 1.5 86.9 86.9 89	1.0 0.983 0.0	1.0 0.854 0.0	82.6 -1.8 89.2 89.3 91	1.0 0.983 0.0	1.0 0.983 0.0	
96	90	92	1.0 1.0 0.0	87.8 -10.2 95.4 96.0 96	1.0 0.829 0.0	81.4 0.0 88.0 88.0 90	1.0 1.0 0.0	1.0 0.879 0.0	83.6 -3.6 90.4 90.5 92	1.0 1.0 0.0	1.0 1.0 0.0	
96	91	93	0.983 1.0 0.0	87.3 -10.7 94.6 95.2 96	1.0 0.85 0.0	82.4 -1.5 89.0 89.0 91	0.983 1.0 0.0	1.0 0.916 0.0	84.9 -5.5 92.0 92.2 93	0.983 1.0 0.0	0.983 1.0 0.0	
96	92	94	0.966 1.0 0.0	86.8 -11.2 93.8 94.5 96	1.0 0.871 0.0	83.3 -3.0 90.0 90.1 92	0.967 1.0 0.0	1.0 0.953 0.0	86.2 -7.5 93.6 93.9 94	0.967 1.0 0.0	0.967 1.0 0.0	
97	93	95	0.95 1.0 0.0	86.4 -11.7 93.0 93.7 97	1.0 0.901 0.0	84.4 -4.7 91.4 91.5 93	0.95 1.0 0.0	1.0 0.99 0.0	87.5 -9.6 95.1 95.6 95	0.95 1.0 0.0	0.95 1.0 0.0	
97	94	96	0.933 1.0 0.0	85.9 -12.2 92.2 93.0 97	1.0 0.933 0.0	85.5 -6.4 92.7 93.0 94	0.933 1.0 0.0	0.961 1.0 0.0	86.7 -11.3 93.6 94.3 96	0.933 1.0 0.0	0.933 1.0 0.0	
97	95	98	0.916 1.0 0.0	85.5 -12.7 91.3 92.2 97	1.0 0.965 0.0	86.6 -8.1 94.1 94.4 95	0.917 1.0 0.0	0.907 1.0 0.0	85.3 -12.9 90.9 91.8 98	0.917 1.0 0.0	0.917 1.0 0.0	
98	96	99	0.9 1.0 0.0	85.0 -13.2 90.5 91.5 98	1.0 0.997 0.0	87.7 -9.9 95.4 95.9 96	0.9 1.0 0.0	0.856 1.0 0.0	83.8 -14.4 88.4 89.6 99	0.9 1.0 0.0	0.9 1.0 0.0	
98	97	100	0.883 1.0 0.0	84.5 -13.6 89.7 90.7 98	0.959 1.0 0.0	86.7 -11.4 93.5 94.2 97	0.883 1.0 0.0	0.807 1.0 0.0	82.4 -15.8 86.2 87.7 100	0.883 1.0 0.0	0.883 1.0 0.0	
99	98	101	0.866 1.0 0.0	84.1 -14.1 88.9 90.0 99	0.914 1.0 0.0	85.4 -12.7 91.2 92.1 98	0.867 1.0 0.0	0.759 1.0 0.0	81.0 -17.2 84.0 85.7 101	0.867 1.0 0.0	0.867 1.0 0.0	
99	99	102	0.85 1.0 0.0	83.6 -14.6 88.1 89.3 99	0.869 1.0 0.0	84.2 -14.0 89.0 90.1 99	0.85 1.0 0.0	0.729 1.0 0.0	79.9 -18.6 82.3 84.4 102	0.85 1.0 0.0	0.85 1.0 0.0	
99	100	103	0.833 1.0 0.0	83.1 -15.1 87.4 88.7 99	0.827 1.0 0.0	83.0 -15.3 87.1 88.5 100	0.833 1.0 0.0	0.704 1.0 0.0	78.8 -20.0 80.8 83.2 103	0.833 1.0 0.0	0.833 1.0 0.0	
100	101	105	0.816 1.0 0.0	82.6 -15.6 86.6 88.0 100	0.785 1.0 0.0	81.8 -16.5 85.2 86.8 101	0.817 1.0 0.0	0.679 1.0 0.0	77.7 -21.3 79.2 82.0 105	0.817 1.0 0.0	0.817 1.0 0.0	
100	102	106	0.8 1.0 0.0	82.2 -16.1 85.8 87.3 100	0.747 1.0 0.0	80.6 -17.6 83.4 85.2 102	0.8 1.0 0.0	0.654 1.0 0.0	76.6 -22.6 77.6 80.8 106	0.8 1.0 0.0	0.8 1.0 0.0	
101	103	107	0.783 1.0 0.0	81.7 -16.6 85.1 86.7 101	0.725 1.0 0.0	79.7 -18.8 82.0 84.2 103	0.783 1.0 0.0	0.628 1.0 0.0	75.5 -23.8 76.0 79.6 107	0.783 1.0 0.0	0.783 1.0 0.0	
101	104	108	0.766 1.0 0.0	81.2 -17.0 84.3 86.0 101	0.703 1.0 0.0	78.7 -20.0 80.7 83.2 104	0.767 1.0 0.0	0.605 1.0 0.0	74.6 -25.0 74.3 78.4 108	0.767 1.0 0.0	0.767 1.0 0.0	
101	105	109	0.75 1.0 0.0	80.7 -17.5 83.5 85.3 101	0.682 1.0 0.0	77.8 -21.2 79.4 82.2 105	0.75 1.0 0.0	0.583 1.0 0.0	73.7 -26.1 72.7 77.3 109	0.75 1.0 0.0	0.75 1.0 0.0	
102	106	110	0.733 1.0 0.0	80.0 -18.4 82.5 84.6 102	0.66 1.0 0.0	76.8 -22.3 78.0 81.1 106	0.733 1.0 0.0	0.56 1.0 0.0	72.9 -27.1 71.0 76.1 110	0.733 1.0 0.0	0.733 1.0 0.0	
103	107	112	0.716 1.0 0.0	79.3 -19.3 81.5 83.8 103	0.638 1.0 0.0	75.9 -23.3 76.6 80.1 107	0.717 1.0 0.0	0.538 1.0 0.0	72.0 -28.1 69.3 74.9 112	0.717 1.0 0.0	0.717 1.0 0.0	
104	108	113	0.7 1.0 0.0	78.5 -20.2 80.5 83.0 104	0.617 1.0 0.0	75.0 -24.3 75.2 79.1 108	0.7 1.0 0.0	0.515 1.0 0.0	71.2 -29.0 67.7 73.7 113	0.7 1.0 0.0	0.7 1.0 0.0	
104	109	114	0.683 1.0 0.0	77.8 -21.1 79.4 82.2 104	0.598 1.0 0.0	74.3 -25.3 73.8 78.1 109	0.683 1.0 0.0	0.494 1.0 0.0	70.4 -30.0 66.1 72.6 114	0.683 1.0 0.0	0.683 1.0 0.0	
105	110	115	0.666 1.0 0.0	77.1 -22.0 78.4 81.4 105	0.579 1.0 0.0	73.6 -26.2 72.4 77.0 110	0.667 1.0 0.0	0.474 1.0 0.0	69.6 -31.0 64.8 71.9 115	0.667 1.0 0.0	0.667 1.0 0.0	
106	111	116	0.65 1.0 0.0	76.4 -22.8 77.3 80.6 106	0.559 1.0 0.0	72.9 -27.1 71.0 76.0 111	0.65 1.0 0.0	0.454 1.0 0.0	68.8 -32.0 63.5 71.2 116	0.65 1.0 0.0	0.65 1.0 0.0	
107	112	117	0.633 1.0 0.0	75.6 -23.6 76.2 79.8 107	0.54 1.0 0.0	72.1 -28.0 69.5 75.0 112	0.633 1.0 0.0	0.434 1.0 0.0	68.0 -32.9 62.2 70.5 117	0.633 1.0 0.0	0.633 1.0 0.0	
108	113	119	0.616 1.0 0.0	75.0 -24.4 75.1 79.0 108	0.521 1.0 0.0	71.4 -28.8 68.1 74.0 113	0.617 1.0 0.0	0.414 1.0 0.0	67.3 -33.8 60.9 69.7 119	0.617 1.0 0.0	0.617 1.0 0.0	
108	114	120	0.6 1.0 0.0	74.3 -25.3 73.9 78.1 108	0.501 1.0 0.0	70.7 -29.6 66.6 72.9 114	0.6 1.0 0.0	0.394 1.0 0.0	66.5 -34.7 59.6 69.0 120	0.6 1.0 0.0	0.6 1.0 0.0	
109	115	121	0.583 1.0 0.0	73.7 -26.1 72.7 77.2 109	0.484 1.0 0.0	70.0 -30.4 65.5 72.3 115	0.583 1.0 0.0	0.375 1.0 0.0	65.7 -35.5 58.3 68.3 121	0.583 1.0 0.0	0.583 1.0 0.0	
110	116	122	0.566 1.0 0.0	73.1 -26.9 71.4 76.3 110	0.467 1.0 0.0	69.3 -31.3 64.4 71.7 116	0.567 1.0 0.0	0.364 1.0 0.0	65.1 -36.6 57.4 68.2 122	0.567 1.0 0.0	0.567 1.0 0.0	
111	117	123	0.55 1.0 0.0	72.4 -27.6 70.2 75.5 111	0.45 1.0 0.0	68.7 -32.2 63.3 71.0 117	0.55 1.0 0.0	0.354 1.0 0.0	64.5 -37.7 56.6 68.0 123	0.55 1.0 0.0	0.55 1.0 0.0	
112	118	124	0.533 1.0 0.0	71.8 -28.3 69.0 74.6 112	0.433 1.0 0.0	68.0 -33.0 62.2 70.4 118	0.533 1.0 0.0	0.343 1.0 0.0	63.9 -38.8 55.7 67.9 124	0.533 1.0 0.0	0.533 1.0 0.0	
113	119	126	0.516 1.0 0.0	71.2 -29.0 67.7 73.7 113	0.416 1.0 0.0	67.3 -33.7 61.1 69.8 119	0.517 1.0 0.0	0.333 1.0 0.0	63.3 -39.8 54.7 67.8 126	0.517 1.0 0.0	0.517 1.0 0.0	
114	120	127	0.5 1.0 0.0	70.6 -29.7 66.5 72.8 114	0.399 1.0 0.0	66.7 -34.5 59.9 69.2 120	0.5 1.0 0.0	0.322 1.0 0.0	62.6 -40.8 53.8 67.6 127	0.5 1.0 0.0	0.5 1.0 0.0	



vea archivos semejantes: <http://130.149.60.45/~farbmetrik/RS58/RS58.HTM>  
información técnica: <http://www.ps.bam.de> o <http://130.149.60.45/~farbmetrik>

TUB matrícula: 20130201-RS58/RS58L0FA.TXT /.PS  
aplicación para la medida salida en la impresión offset, separación cmy0\* (CMY0)  
TUB material: code=rh4ta

Data of Maximum color M in colorimetric system Offset standard print; separation cmy0\*; D65 for input or output; Six hue angles of the 60 degree standard colours RYGCBM<sub>s</sub>: h<sub>ab,ds</sub> = 30.0, 90.0, 150.0, 210.0, 270.0, 330.0; Six hue angles of the device colours RYGCBM<sub>d</sub>: h<sub>ab,d</sub> = 32.3, 96.1, 155.5, 238.4, 306.2, 359.8; Six hue angles of the elementary colours RYGCBM<sub>e</sub>: h<sub>ab,e</sub> = 25.5, 92.3, 162.2, 217.0, 271.7, 328.6

h <sub>ab,d</sub>	h <sub>ab,s</sub>	h <sub>ab,e</sub>	rgb* dd361M	LAB* ddx361Mi (x=LabCh)	rgb* ds361Mi	LAB* dsx361Mi (x=LabCh)	rgb* dd361Mi	LAB* dex361Mi (x=LabCh)	rgb* dd361Mi	LAB* dex361Mi (x=LabCh)	rgb* dd361Mi	LAB* dex361Mi (x=LabCh)	rgb* dd361Mi	LAB* dex361Mi (x=LabCh)	rgb* dd361Mi	LAB* dex361Mi (x=LabCh)	rgb* dd361Mi	LAB* dex361Mi (x=LabCh)														
114	120	127	0.5	1.0	0.0	70.6	-29.7	66.5	72.8	114	0.399	1.0	0.0	66.7	-34.5	59.9	69.2	120	0.5	1.0	0.0	0.322	1.0	0.0	62.6	-40.8	53.8	67.6	127	0.5	1.0	0.0
115	121	128	0.483	1.0	0.0	69.9	-30.5	65.4	72.2	115	0.382	1.0	0.0	66.0	-35.2	58.8	68.6	121	0.483	1.0	0.0	0.312	1.0	0.0	62.0	-41.8	52.9	67.5	128	0.483	1.0	0.0
116	122	129	0.466	1.0	0.0	69.3	-31.4	64.3	71.6	116	0.37	1.0	0.0	65.4	-36.1	57.9	68.3	122	0.466	1.0	0.0	0.301	1.0	0.0	61.4	-42.8	51.9	67.3	129	0.466	1.0	0.0
117	123	130	0.45	1.0	0.0	68.6	-32.2	63.2	71.0	117	0.361	1.0	0.0	64.9	-37.0	57.1	68.1	123	0.45	1.0	0.0	0.291	1.0	0.0	60.8	-43.8	50.9	67.2	130	0.45	1.0	0.0
117	124	131	0.433	1.0	0.0	68.0	-33.0	62.1	70.4	117	0.352	1.0	0.0	64.4	-37.9	56.4	68.0	124	0.433	1.0	0.0	0.28	1.0	0.0	60.2	-44.7	49.9	67.0	131	0.433	1.0	0.0
118	125	133	0.416	1.0	0.0	67.3	-33.8	61.0	69.8	118	0.343	1.0	0.0	63.8	-38.8	55.6	67.9	125	0.416	1.0	0.0	0.27	1.0	0.0	59.6	-45.6	48.9	66.9	133	0.416	1.0	0.0
119	126	134	0.4	1.0	0.0	66.7	-34.5	59.9	69.2	119	0.334	1.0	0.0	63.3	-39.7	54.8	67.8	126	0.4	1.0	0.0	0.259	1.0	0.0	59.0	-46.5	47.8	66.8	134	0.4	1.0	0.0
120	127	135	0.383	1.0	0.0	66.0	-35.2	58.8	68.6	120	0.325	1.0	0.0	62.8	-40.6	54.0	67.6	127	0.383	1.0	0.0	0.249	1.0	0.0	58.4	-47.4	46.8	66.6	135	0.383	1.0	0.0
122	128	136	0.366	1.0	0.0	65.2	-36.4	57.6	68.2	122	0.316	1.0	0.0	62.3	-41.5	53.2	67.5	128	0.366	1.0	0.0	0.233	1.0	0.0	57.9	-48.3	45.8	66.6	136	0.366	1.0	0.0
124	129	137	0.35	1.0	0.0	64.2	-38.2	56.2	67.9	124	0.307	1.0	0.0	61.7	-42.3	52.4	67.4	129	0.35	1.0	0.0	0.217	1.0	0.0	57.4	-49.2	44.7	66.6	137	0.35	1.0	0.0
126	130	138	0.333	1.0	0.0	63.2	-39.8	54.7	67.7	126	0.298	1.0	0.0	61.2	-43.1	51.5	67.3	130	0.333	1.0	0.0	0.201	1.0	0.0	57.0	-50.0	43.7	66.5	138	0.333	1.0	0.0
127	131	140	0.316	1.0	0.0	62.3	-41.4	53.2	67.5	127	0.289	1.0	0.0	60.7	-44.0	50.7	67.2	131	0.316	1.0	0.0	0.185	1.0	0.0	56.5	-50.9	42.7	66.5	140	0.316	1.0	0.0
129	132	141	0.3	1.0	0.0	61.3	-43.0	51.7	67.3	129	0.28	1.0	0.0	60.2	-44.8	49.8	67.0	132	0.3	1.0	0.0	0.169	1.0	0.0	56.0	-51.7	41.6	66.5	141	0.3	1.0	0.0
131	133	142	0.283	1.0	0.0	60.3	-44.5	50.1	67.0	131	0.271	1.0	0.0	59.6	-45.5	48.9	66.9	133	0.283	1.0	0.0	0.153	1.0	0.0	55.5	-52.5	40.5	66.4	142	0.283	1.0	0.0
133	134	143	0.266	1.0	0.0	59.3	-45.9	48.5	66.8	133	0.262	1.0	0.0	59.1	-46.3	48.0	66.8	134	0.266	1.0	0.0	0.137	1.0	0.0	55.1	-53.3	39.4	66.4	143	0.266	1.0	0.0
135	135	144	0.25	1.0	0.0	58.4	-47.3	46.8	66.6	135	0.253	1.0	0.0	58.6	-47.0	47.1	66.7	135	0.25	1.0	0.0	0.122	1.0	0.0	54.6	-54.2	38.4	66.5	144	0.25	1.0	0.0
136	136	145	0.233	1.0	0.0	57.9	-48.3	45.8	66.5	136	0.241	1.0	0.0	58.1	-47.8	46.3	66.6	136	0.233	1.0	0.0	0.108	1.0	0.0	54.1	-55.4	37.6	67.0	145	0.233	1.0	0.0
137	137	147	0.216	1.0	0.0	57.4	-49.2	44.7	66.5	137	0.227	1.0	0.0	57.7	-48.6	45.4	66.6	137	0.216	1.0	0.0	0.095	1.0	0.0	53.6	-56.6	36.7	67.6	147	0.216	1.0	0.0
138	138	148	0.2	1.0	0.0	56.9	-50.1	43.6	66.5	138	0.213	1.0	0.0	57.3	-49.4	44.5	66.6	138	0.2	1.0	0.0	0.082	1.0	0.0	53.1	-57.8	35.8	68.1	148	0.2	1.0	0.0
140	139	149	0.183	1.0	0.0	56.4	-51.0	42.5	66.4	140	0.2	1.0	0.0	56.9	-50.1	43.6	66.5	139	0.183	1.0	0.0	0.069	1.0	0.0	52.6	-59.0	34.9	68.6	149	0.183	1.0	0.0
141	140	150	0.166	1.0	0.0	55.9	-51.9	41.4	66.4	141	0.186	1.0	0.0	56.5	-50.8	42.7	66.5	140	0.166	1.0	0.0	0.056	1.0	0.0	52.1	-60.1	34.0	69.2	150	0.166	1.0	0.0
142	141	151	0.15	1.0	0.0	55.4	-52.7	40.3	66.4	142	0.172	1.0	0.0	56.1	-51.6	41.8	66.5	141	0.15	1.0	0.0	0.043	1.0	0.0	51.7	-61.3	33.0	69.7	151	0.15	1.0	0.0
143	142	152	0.133	1.0	0.0	54.9	-53.5	39.1	66.3	143	0.159	1.0	0.0	55.7	-52.3	40.9	66.4	142	0.133	1.0	0.0	0.03	1.0	0.0	51.2	-62.4	32.0	70.2	152	0.133	1.0	0.0
145	143	154	0.116	1.0	0.0	54.4	-54.7	38.0	66.6	145	0.145	1.0	0.0	55.3	-52.9	40.0	66.4	143	0.116	1.0	0.0	0.016	1.0	0.0	50.7	-63.5	30.9	70.8	154	0.116	1.0	0.0
146	144	155	0.1	1.0	0.0	53.7	-56.2	37.0	67.3	146	0.131	1.0	0.0	54.9	-53.6	39.0	66.4	144	0.1	1.0	0.0	0.003	1.0	0.0	50.2	-64.6	29.9	71.3	155	0.1	1.0	0.0
148	145	156	0.083	1.0	0.0	53.1	-57.7	35.9	68.0	148	0.119	1.0	0.0	54.5	-54.5	38.2	66.6	145	0.083	1.0	0.0	0.0	1.0	0.021	50.1	-64.6	28.3	70.6	156	0.083	1.0	0.0
149	146	157	0.066	1.0	0.0	52.5	-59.2	34.7	68.7	149	0.107	1.0	0.0	54.1	-55.5	37.5	67.1	146	0.066	1.0	0.0	0.0	1.0	0.049	50.3	-64.2	26.5	69.5	157	0.066	1.0	0.0
151	147	158	0.049	1.0	0.0	51.9	-60.7	33.5	69.4	151	0.096	1.0	0.0	53.7	-56.5	36.8	67.5	147	0.049	1.0	0.0	0.0	1.0	0.077	50.4	-63.7	24.8	68.4	158	0.049	1.0	0.0
152	148	159	0.033	1.0	0.0	51.3	-62.2	32.2	70.0	152	0.085	1.0	0.0	53.2	-57.6	36.0	68.0	148	0.033	1.0	0.0	0.0	1.0	0.104	50.5	-63.1	23.1	67.3	159	0.033	1.0	0.0
154	149	161	0.016	1.0	0.0	50.6	-63.6	30.9	70.7	154	0.074	1.0	0.0	52.8	-58.6	35.3	68.4	149	0.016	1.0	0.0	0.0	1.0	0.13	50.6	-62.6	21.5	66.3	161	0.016	1.0	0.0
155	150	162	0.0	1.0	0.0	50.0	-65.0	29.6	71.4	155	G <sub>d</sub> 0.062	1.0	0.0	52.4	-59.6	34.5	68.9	150	G <sub>s</sub> 0.0	1.0	0.0	0.0	1.0	0.151	50.7	-62.0	19.9	65.2	162	G <sub>e</sub> 0.0	1.0	0.0
156	151	163	0.0	1.0	0.016	50.1	-64.7	28.5	70.7	156	0.051	1.0	0.0	52.0	-60.6	33.6	69.4	151	0.0	1.0	0.017	0.0	1.0	0.167	50.8	-61.6	18.7	64.4	163	0.0	1.0	0.017
156	152	164	0.0	1.0	0.033	50.1	-64.5	27.4	70.1	156	0.04	1.0	0.0	51.5	-61.6	32.8	69.8	152	0.0	1.0	0.033	0.0	1.0	0.183	50.9	-61.1	17.5	63.6	164	0.0	1.0	0.033
157	153	164	0.0	1.0	0.05	50.2	-64.2	26.4	69.4	157	0.028	1.0	0.0	51.1	-62.5	31.9	70.3	153	0.0	1.0	0.05	0.0	1.0	0.2	51.0	-60.6	16.3	62.8	164	0.0	1.0	0.05
158	154	165	0.0	1.0	0.066	50.3	-63.9	25.4	68.8	158	0.017	1.0	0.0	50.7	-63.5	31.0	70.7	154	0.0	1.0	0.067	0.0	1.0	0.216	51.0	-60.0	15.1	62.0	165	0.0	1.0	0.067
159	155	166	0.0	1.0	0.083	50.3	-63.6	24.4	68.1	159	0.006	1.0	0.0	50.3	-64.4	30.1	71.2	155	0.0	1.0	0.083	0.0	1.0	0.232	51.1	-59.5	14.0	61.2	166	0.0	1.0	0.083
159	156	167	0.0	1.0	0.1	50.4	-63.3	23.4	67.5	159	0.0	1.0	0.012	50.1	-64.7	28.9	71.0	156	0.0	1.0	0.1	0.0	1.0	0.248	51.2	-58.9	12.9	60.4	167	0.0	1.0	0.1
160	157	168	0.0	1.0	0.116	50.5	-62.9	22.4	66.8	160	0.0	1.0	0.035	50.2	-64.4	27.4	70.0	157	0.0	1.0	0.117	0.0	1.0	0.261	51.3	-58.5	11.8	59.8	168	0.0	1.0	0.117
161	158	169	0.0	1.0	0.133	50.5	-62.5	21.2	66.1	161	0.0	1.0	0.059	50.3	-64.0	25.9	69.1	158	0.0	1.0	0.133	0.0	1.0	0.274	51.4	-58.1	10.8	59.2	169	0.0	1.0	0.133
162	159	170	0.0	1.0	0.15	50.6	-62.1	19.9	65.2	162	0.0	1.0	0.083	50.4	-63.5	24.4	68.2	159	0.0	1.0	0.15	0.0	1.0	0.287	51.5	-57.7	9.7	58.6	170	0.0	1.0	0.1



Data of Maximum color M in colorimetric system Offset standard print; separation cmy0\*, D65 for input or output; Six hue angles of the 60 degree standard colours RYGCMB<sub>s</sub>: h<sub>ab,ds</sub> = 30.0, 90.0, 150.0, 210.0, 270.0, 330.0; Six hue angles of the device colours RYGCMB<sub>d</sub>: h<sub>ab,d</sub> = 32.3, 96.1, 155.5, 238.4, 306.2, 359.8; Six hue angles of the elementary colours RYGCMB<sub>e</sub>: h<sub>ab,e</sub> = 25.5, 92.3, 162.2, 217.0, 271.7, 328.6

h <sub>ab,d</sub>	h <sub>ab,s</sub>	h <sub>ab,e</sub>	rgb* dd361M	LAB* ddx361Mi (x=LabCh)	C <sub>d</sub>	rgb* ds361Mi	LAB* dsx361Mi (x=LabCh)	210C <sub>s</sub>	rgb* dd361Mi	LAB* de361Mi	216C <sub>e</sub>	rgb* dd361Mi	rgb* dd	rgb* ds	rgb* de																						
238	210	216	0.0	1.0	1.0	56.8	-25.5	-41.5	48.7	238	C <sub>d</sub>	0.0	1.0	0.685	54.5	-39.5	-22.8	45.7	210C <sub>s</sub>	0.0	1.0	1.0	0.0	1.0	0.747	55.0	-36.1	-27.2	45.3	216C <sub>e</sub>	0.0	1.0	1.0	0.0	1.0	0.983	1.0
239	211	217	0.0	0.983	1.0	56.4	-24.9	-41.5	48.4	239		0.0	1.0	0.694	54.6	-39.0	-23.4	45.7	211	0.0	0.983	1.0	0.0	1.0	0.757	55.1	-35.7	-27.8	45.4	217	0.0	0.983	1.0				
239	212	218	0.0	0.966	1.0	56.1	-24.3	-41.5	48.1	239		0.0	1.0	0.703	54.7	-38.6	-24.1	45.6	212	0.0	0.967	1.0	0.0	1.0	0.767	55.2	-35.3	-28.4	45.4	218	0.0	0.967	1.0				
240	213	219	0.0	0.95	1.0	55.7	-23.7	-41.5	47.8	240		0.0	1.0	0.712	54.7	-38.1	-24.7	45.6	213	0.0	0.95	1.0	0.0	1.0	0.778	55.2	-34.9	-29.0	45.5	219	0.0	0.95	1.0				
240	214	220	0.0	0.933	1.0	55.4	-23.1	-41.5	47.5	240		0.0	1.0	0.721	54.8	-37.6	-25.3	45.5	214	0.0	0.933	1.0	0.0	1.0	0.788	55.3	-34.5	-29.6	45.6	220	0.0	0.933	1.0				
241	215	221	0.0	0.916	1.0	55.0	-22.5	-41.4	47.2	241		0.0	1.0	0.73	54.9	-37.1	-26.0	45.4	215	0.0	0.917	1.0	0.0	1.0	0.798	55.4	-34.1	-30.2	45.7	221	0.0	0.917	1.0				
242	216	222	0.0	0.9	1.0	54.6	-22.0	-41.4	46.9	242		0.0	1.0	0.739	55.0	-36.6	-26.6	45.4	216	0.0	0.9	1.0	0.0	1.0	0.808	55.4	-33.6	-30.8	45.7	222	0.0	0.9	1.0				
242	217	223	0.0	0.883	1.0	54.3	-21.4	-41.4	46.6	242		0.0	1.0	0.747	55.0	-36.1	-27.2	45.3	217	0.0	0.883	1.0	0.0	1.0	0.819	55.5	-33.2	-31.3	45.8	223	0.0	0.883	1.0				
243	218	224	0.0	0.866	1.0	53.9	-20.7	-41.3	46.3	243		0.0	1.0	0.758	55.1	-35.6	-27.8	45.4	218	0.0	0.867	1.0	0.0	1.0	0.829	55.6	-32.7	-31.9	45.9	224	0.0	0.867	1.0				
244	219	225	0.0	0.85	1.0	53.4	-20.0	-41.3	45.9	244		0.0	1.0	0.769	55.2	-35.2	-28.5	45.4	219	0.0	0.85	1.0	0.0	1.0	0.839	55.6	-32.3	-32.5	45.9	225	0.0	0.85	1.0				
245	220	226	0.0	0.833	1.0	52.9	-19.2	-41.3	45.6	245		0.0	1.0	0.781	55.3	-34.8	-29.2	45.5	220	0.0	0.833	1.0	0.0	1.0	0.85	55.7	-31.8	-33.1	46.0	226	0.0	0.833	1.0				
245	221	227	0.0	0.816	1.0	52.4	-18.5	-41.3	45.3	245		0.0	1.0	0.792	55.3	-34.3	-29.8	45.6	221	0.0	0.817	1.0	0.0	1.0	0.86	55.8	-31.3	-33.6	46.1	227	0.0	0.817	1.0				
246	222	227	0.0	0.8	1.0	51.9	-17.7	-41.3	44.9	246		0.0	1.0	0.803	55.4	-33.9	-30.5	45.7	222	0.0	0.8	1.0	0.0	1.0	0.87	55.8	-30.8	-34.2	46.2	227	0.0	0.8	1.0				
247	223	228	0.0	0.783	1.0	51.4	-17.0	-41.2	44.6	247		0.0	1.0	0.815	55.5	-33.4	-31.1	45.8	223	0.0	0.783	1.0	0.0	1.0	0.881	55.9	-30.4	-34.8	46.3	228	0.0	0.783	1.0				
248	224	229	0.0	0.766	1.0	50.9	-16.2	-41.2	44.2	248		0.0	1.0	0.826	55.6	-32.9	-31.7	45.8	224	0.0	0.767	1.0	0.0	1.0	0.893	56.0	-30.0	-35.4	46.6	229	0.0	0.767	1.0				
249	225	230	0.0	0.75	1.0	50.4	-15.5	-41.1	43.9	249		0.0	1.0	0.837	55.6	-32.4	-32.4	45.9	225	0.0	0.75	1.0	0.0	1.0	0.904	56.1	-29.6	-36.1	46.8	230	0.0	0.75	1.0				
250	226	231	0.0	0.733	1.0	49.9	-14.7	-41.1	43.6	250		0.0	1.0	0.849	55.7	-31.9	-33.0	46.0	226	0.0	0.733	1.0	0.0	1.0	0.915	56.2	-29.1	-36.7	47.0	231	0.0	0.733	1.0				
251	227	232	0.0	0.716	1.0	49.4	-13.8	-41.1	43.4	251		0.0	1.0	0.86	55.8	-31.3	-33.6	46.1	227	0.0	0.717	1.0	0.0	1.0	0.926	56.3	-28.7	-37.4	47.2	232	0.0	0.717	1.0				
252	228	233	0.0	0.7	1.0	48.8	-13.0	-41.1	43.1	252		0.0	1.0	0.871	55.9	-30.8	-34.2	46.2	228	0.0	0.7	1.0	0.0	1.0	0.938	56.3	-28.2	-38.0	47.5	233	0.0	0.7	1.0				
253	229	234	0.0	0.683	1.0	48.3	-12.2	-41.1	42.9	253		0.0	1.0	0.883	55.9	-30.3	-34.9	46.4	229	0.0	0.683	1.0	0.0	1.0	0.949	56.4	-27.7	-38.6	47.7	234	0.0	0.683	1.0				
254	230	235	0.0	0.666	1.0	47.8	-11.4	-41.0	42.6	254		0.0	1.0	0.896	56.0	-29.9	-35.6	46.6	230	0.0	0.667	1.0	0.0	1.0	0.96	56.5	-27.2	-39.3	47.9	235	0.0	0.667	1.0				
255	231	236	0.0	0.65	1.0	47.3	-10.6	-41.0	42.3	255		0.0	1.0	0.908	56.1	-29.4	-36.3	46.9	231	0.0	0.65	1.0	0.0	1.0	0.972	56.6	-26.7	-39.9	48.2	236	0.0	0.65	1.0				
256	232	237	0.0	0.633	1.0	46.8	-9.8	-40.9	42.1	256		0.0	1.0	0.92	56.2	-28.9	-37.0	47.1	232	0.0	0.633	1.0	0.0	1.0	0.983	56.7	-26.2	-40.5	48.4	237	0.0	0.633	1.0				
257	233	237	0.0	0.616	1.0	46.2	-8.9	-40.9	41.8	257		0.0	1.0	0.933	56.3	-28.4	-37.7	47.4	233	0.0	0.617	1.0	0.0	1.0	0.994	56.8	-25.7	-41.1	48.6	237	0.0	0.617	1.0				
259	234	238	0.0	0.6	1.0	45.5	-7.8	-40.9	41.7	259		0.0	1.0	0.945	56.4	-27.9	-38.4	47.6	234	0.0	0.6	1.0	0.0	1.0	0.988	1.0	56.6	-25.0	-41.4	48.5	238	0.0	0.6	1.0			
260	235	239	0.0	0.583	1.0	44.9	-6.6	-41.0	41.5	260		0.0	1.0	0.957	56.5	-27.4	-39.1	47.9	235	0.0	0.583	1.0	0.0	1.0	0.962	1.0	56.0	-24.1	-41.4	48.1	239	0.0	0.583	1.0			
262	236	240	0.0	0.566	1.0	44.2	-5.5	-40.9	41.3	262		0.0	1.0	0.97	56.6	-26.8	-39.8	48.1	236	0.0	0.567	1.0	0.0	1.0	0.937	1.0	55.5	-23.2	-41.4	47.6	240	0.0	0.567	1.0			
263	237	241	0.0	0.55	1.0	43.6	-4.4	-40.9	41.1	263		0.0	1.0	0.982	56.7	-26.2	-40.5	48.4	237	0.0	0.55	1.0	0.0	1.0	0.911	1.0	54.9	-22.3	-41.4	47.1	241	0.0	0.55	1.0			
265	238	242	0.0	0.533	1.0	43.0	-3.3	-40.8	41.0	265		0.0	1.0	0.994	56.8	-25.7	-41.1	48.6	238	0.0	0.533	1.0	0.0	1.0	0.885	1.0	54.4	-21.4	-41.3	46.7	242	0.0	0.533	1.0			
266	239	243	0.0	0.516	1.0	42.3	-2.3	-40.7	40.8	266		0.0	0.985	1.0	56.5	-24.9	-41.4	48.5	239	0.0	0.517	1.0	0.0	1.0	0.864	1.0	53.9	-20.6	-41.3	46.3	243	0.0	0.517	1.0			
268	240	244	0.0	0.5	1.0	41.7	-1.2	-40.6	40.6	268		0.0	0.956	1.0	55.9	-23.9	-41.4	48.0	240	0.0	0.5	1.0	0.0	1.0	0.847	1.0	53.3	-19.8	-41.3	45.9	244	0.0	0.5	1.0			
269	241	245	0.0	0.483	1.0	41.1	-0.2	-40.6	40.6	269		0.0	0.928	1.0	55.3	-22.9	-41.4	47.4	241	0.0	0.483	1.0	0.0	1.0	0.829	1.0	52.8	-19.0	-41.3	45.6	245	0.0	0.483	1.0			
271	242	246	0.0	0.466	1.0	40.5	0.7	-40.6	40.6	271		0.0	0.9	1.0	54.7	-21.9	-41.3	46.9	242	0.0	0.467	1.0	0.0	1.0	0.811	1.0	52.3	-18.1	-41.2	45.2	246	0.0	0.467	1.0			
272	243	247	0.0	0.45	1.0	39.9	1.7	-40.6	40.6	272		0.0	0.873	1.0	54.1	-21.0	-41.3	46.4	243	0.0	0.45	1.0	0.0	1.0	0.793	1.0	51.7	-17.3	-41.2	44.8	247	0.0	0.45	1.0			
273	244	248	0.0	0.433	1.0	39.3	2.7	-40.6	40.6	273		0.0	0.854	1.0	53.5	-20.1	-41.3	46.1	244	0.0	0.433	1.0	0.0	1.0	0.775	1.0	51.2	-16.6	-41.1	44.5	248	0.0	0.433	1.0			
275	245	248	0.0	0.416	1.0	38.8	3.6	-40.5	40.6	275		0.0	0.834	1.0	53.0	-19.2	-41.3	45.7	245	0.0	0.417	1.0	0.0	1.0	0.757	1.0	50.7	-15.8	-41.1	44.1	248	0.0	0.417	1.0			
276	246	249	0.0	0.4	1.0	38.2	4.6	-40.4	40.7	276		0.0	0.815	1.0	52.4	-18.3	-41.3	45.3	246	0.0	0.4	1.0	0.0	1.0	0.741	1.0	50.2	-15.0	-41.0	43.8	249	0.0	0.4	1.0			
277	247	250	0.0	0.383	1.0	37.6	5.6	-40.3	40.7	277		0.0	0.795	1.0	51.8	-17.4	-41.2	44.9	247	0.0	0.383	1.0	0.0	1.0	0.726	1.0	49.7	-14.3	-41.1	43.6	250	0.0	0.383	1.0			
279	248	251	0.0	0.366	1.0	37.0	6.6	-40.2	40.8	279		0.0	0.775	1.0	51.2	-16.6	-41.1	44.5	248	0.0	0.367	1.0	0.0	1.0	0.711	1.0	49.2	-13.5	-41.0	43.4	251	0.0	0.367	1.0			
280	249	252	0.0	0.35	1.0	36.4	7.7	-40.3	41.1	2																											

Data of Maximum color M in colorimetric system Offset standard print; separation cmy0\*; D65 for input or output; Six hue angles of the 60 degree standard colours RYGCBM<sub>s</sub>: h<sub>ab,ds</sub> = 30.0, 90.0, 150.0, 210.0, 270.0, 330.0;  
Six hue angles of the device colours RYGCBM<sub>d</sub>: h<sub>ab,d</sub> = 32.3, 96.1, 155.5, 238.4, 306.2, 359.8; Six hue angles of the elementary colours RYGCBM<sub>c</sub>: h<sub>ab,c</sub> = 25.5, 92.3, 162.2, 217.0, 271.7, 328.6

h <sub>ab,d</sub>	h <sub>ab,s</sub>	h <sub>ab,e</sub>	rgb* dd361M	LAB* ddx361Mi (x=LabCh)	rgb* ds361Mi	LAB* dsx361Mi (x=LabCh)	rgb* dd361Mi	rgb* de361Mi	LAB* dex361Mi (x=LabCh)	rgb* dd361Mi	rgb* de361Mi	LAB* dex361Mi (x=LabCh)	rgb* dd361Mi	rgb* de361Mi	LAB* dex361Mi (x=LabCh)																				
289	255	258	0.0	0.25	1.0	32.8	14.3	-40.2	42.7	289	0.0	0.657	1.0	47.5	-10.9	-40.9	42.5	255	0.0	0.25	1.0	0.0	0.613	1.0	46.1	-8.6	-40.8	41.9	258	0.0	0.25	1.0			
290	256	258	0.0	0.233	1.0	32.2	15.3	-40.3	43.1	290	0.0	0.641	1.0	47.0	-10.1	-40.9	42.2	256	0.0	0.233	1.0	0.0	0.603	1.0	45.7	-7.9	-40.9	41.7	258	0.0	0.233	1.0			
292	257	259	0.0	0.216	1.0	31.7	16.4	-40.3	43.6	292	0.0	0.624	1.0	46.5	-9.3	-40.8	42.0	257	0.0	0.217	1.0	0.0	0.593	1.0	45.3	-7.2	-40.9	41.6	259	0.0	0.217	1.0			
293	258	260	0.0	0.2	1.0	31.1	17.5	-40.4	44.0	293	0.0	0.613	1.0	46.1	-8.6	-40.8	41.9	258	0.0	0.2	1.0	0.0	0.583	1.0	44.9	-6.6	-40.9	41.5	260	0.0	0.2	1.0			
294	259	261	0.0	0.183	1.0	30.6	18.5	-40.4	44.5	294	0.0	0.602	1.0	45.7	-7.9	-40.9	41.7	259	0.0	0.183	1.0	0.0	0.573	1.0	44.5	-5.9	-40.9	41.4	261	0.0	0.183	1.0			
295	260	262	0.0	0.166	1.0	30.0	19.6	-40.4	44.9	295	0.0	0.591	1.0	45.3	-7.1	-40.9	41.6	260	0.0	0.167	1.0	0.0	0.562	1.0	44.1	-5.2	-40.9	41.3	262	0.0	0.167	1.0			
297	261	263	0.0	0.15	1.0	29.5	20.7	-40.4	45.4	297	0.0	0.58	1.0	44.8	-6.4	-40.9	41.5	261	0.0	0.15	1.0	0.0	0.552	1.0	43.7	-4.5	-40.9	41.2	263	0.0	0.15	1.0			
298	262	264	0.0	0.133	1.0	28.9	21.8	-40.3	45.8	298	0.0	0.569	1.0	44.4	-5.7	-40.9	41.4	262	0.0	0.133	1.0	0.0	0.542	1.0	43.4	-3.9	-40.8	41.1	264	0.0	0.133	1.0			
299	263	265	0.0	0.116	1.0	28.4	22.8	-40.3	46.3	299	0.0	0.558	1.0	44.0	-4.9	-40.9	41.3	263	0.0	0.117	1.0	0.0	0.532	1.0	43.0	-3.2	-40.8	41.0	265	0.0	0.117	1.0			
300	264	266	0.0	0.1	1.0	27.9	23.8	-40.4	46.9	300	0.0	0.547	1.0	43.5	-4.2	-40.8	41.2	264	0.0	0.1	1.0	0.0	0.522	1.0	42.6	-2.6	-40.7	40.9	266	0.0	0.1	1.0			
301	265	267	0.0	0.083	1.0	27.4	24.7	-40.4	47.4	301	0.0	0.536	1.0	43.1	-3.5	-40.8	41.1	265	0.0	0.083	1.0	0.0	0.512	1.0	42.2	-1.9	-40.7	40.8	267	0.0	0.083	1.0			
302	266	268	0.0	0.066	1.0	26.9	25.7	-40.4	47.9	302	0.0	0.525	1.0	42.7	-2.8	-40.7	40.9	266	0.0	0.067	1.0	0.0	0.502	1.0	41.8	-1.3	-40.6	40.7	268	0.0	0.067	1.0			
303	267	269	0.0	0.049	1.0	26.5	26.6	-40.5	48.4	303	0.0	0.514	1.0	42.3	-2.0	-40.7	40.8	267	0.0	0.05	1.0	0.0	0.491	1.0	41.4	-0.6	-40.6	40.7	269	0.0	0.05	1.0			
304	268	269	0.0	0.033	1.0	26.0	27.6	-40.4	49.0	304	0.0	0.503	1.0	41.8	-1.3	-40.6	40.7	268	0.0	0.033	1.0	0.0	0.48	1.0	41.0	0.0	-40.6	40.7	269	0.0	0.033	1.0			
305	269	270	0.0	0.016	1.0	25.5	28.6	-40.4	49.5	305	0.0	0.491	1.0	41.4	-0.6	-40.6	40.7	269	0.0	0.017	1.0	0.0	0.469	1.0	40.6	0.6	-40.6	40.7	270	0.0	0.017	1.0			
306	270	271	0.0	0.0	1.0	25.0	29.5	-40.4	50.0	306	B <sub>d</sub>	0.0	0.479	1.0	41.0	0.0	-40.6	40.7	270	B <sub>s</sub>	0.0	0.0	1.0	0.0	0.458	1.0	40.3	1.2	-40.6	40.7	271	B <sub>e</sub>	0.0	0.0	1.0
307	271	272	0.016	0.0	1.0	25.4	30.4	-39.9	50.2	307	0.0	0.467	1.0	40.6	0.7	-40.6	40.7	271	0.017	0.0	1.0	0.0	0.447	1.0	39.9	1.9	-40.5	40.7	272	0.017	0.0	1.0			
308	272	273	0.033	0.0	1.0	25.8	31.3	-39.4	50.4	308	0.0	0.455	1.0	40.2	1.4	-40.6	40.7	272	0.033	0.0	1.0	0.0	0.435	1.0	39.5	2.6	-40.5	40.7	273	0.033	0.0	1.0			
309	273	274	0.05	0.0	1.0	26.2	32.2	-38.9	50.5	309	0.0	0.443	1.0	39.7	2.1	-40.5	40.7	273	0.05	0.0	1.0	0.0	0.424	1.0	39.1	3.3	-40.5	40.7	274	0.05	0.0	1.0			
310	274	275	0.066	0.0	1.0	26.5	33.1	-38.4	50.7	310	0.0	0.431	1.0	39.3	2.8	-40.5	40.7	274	0.067	0.0	1.0	0.0	0.413	1.0	38.7	3.9	-40.4	40.7	275	0.067	0.0	1.0			
311	275	276	0.083	0.0	1.0	26.9	33.9	-37.8	50.8	311	0.0	0.419	1.0	38.9	3.5	-40.4	40.7	275	0.083	0.0	1.0	0.0	0.401	1.0	38.3	4.6	-40.3	40.7	276	0.083	0.0	1.0			
313	276	277	0.1	0.0	1.0	27.3	34.8	-37.3	51.0	313	0.0	0.407	1.0	38.5	4.3	-40.4	40.7	276	0.1	0.0	1.0	0.0	0.39	1.0	37.9	5.3	-40.3	40.7	277	0.1	0.0	1.0			
314	277	278	0.116	0.0	1.0	27.7	35.6	-36.7	51.1	314	0.0	0.395	1.0	38.1	5.0	-40.3	40.7	277	0.117	0.0	1.0	0.0	0.378	1.0	37.5	5.9	-40.2	40.7	278	0.117	0.0	1.0			
315	278	279	0.133	0.0	1.0	27.9	36.4	-36.2	51.3	315	0.0	0.383	1.0	37.6	5.7	-40.2	40.7	278	0.133	0.0	1.0	0.0	0.367	1.0	37.1	6.6	-40.2	40.8	279	0.133	0.0	1.0			
316	279	280	0.15	0.0	1.0	28.1	37.2	-35.7	51.6	316	0.0	0.371	1.0	37.2	6.4	-40.2	40.8	279	0.15	0.0	1.0	0.0	0.357	1.0	36.7	7.3	-40.2	41.0	280	0.15	0.0	1.0			
317	280	281	0.166	0.0	1.0	28.2	38.0	-35.2	51.9	317	0.0	0.36	1.0	36.8	7.1	-40.2	41.0	280	0.167	0.0	1.0	0.0	0.346	1.0	36.3	8.0	-40.3	41.2	281	0.167	0.0	1.0			
318	281	282	0.183	0.0	1.0	28.3	38.8	-34.7	52.1	318	0.0	0.348	1.0	36.4	7.8	-40.3	41.1	281	0.183	0.0	1.0	0.0	0.335	1.0	35.9	8.7	-40.3	41.3	282	0.183	0.0	1.0			
319	282	283	0.2	0.0	1.0	28.5	39.6	-34.2	52.4	319	0.0	0.337	1.0	36.0	8.6	-40.3	41.3	282	0.2	0.0	1.0	0.0	0.324	1.0	35.5	9.4	-40.3	41.5	283	0.2	0.0	1.0			
320	283	284	0.216	0.0	1.0	28.6	40.4	-33.7	52.6	320	0.0	0.326	1.0	35.6	9.3	-40.3	41.5	283	0.217	0.0	1.0	0.0	0.313	1.0	35.1	10.1	-40.3	41.7	284	0.217	0.0	1.0			
321	284	285	0.233	0.0	1.0	28.7	41.2	-33.1	52.9	321	0.0	0.314	1.0	35.2	10.1	-40.3	41.7	284	0.233	0.0	1.0	0.0	0.303	1.0	34.8	10.8	-40.3	41.9	285	0.233	0.0	1.0			
322	285	285	0.25	0.0	1.0	28.8	41.9	-32.5	53.1	322	0.0	0.303	1.0	34.8	10.8	-40.3	41.9	285	0.25	0.0	1.0	0.0	0.292	1.0	34.4	11.6	-40.3	42.0	285	0.25	0.0	1.0			
323	286	286	0.266	0.0	1.0	29.4	43.3	-31.8	53.8	323	0.0	0.291	1.0	34.3	11.6	-40.3	42.0	286	0.267	0.0	1.0	0.0	0.281	1.0	34.0	12.3	-40.3	42.2	286	0.267	0.0	1.0			
325	287	287	0.283	0.0	1.0	29.9	44.7	-31.1	54.4	325	0.0	0.28	1.0	33.9	12.3	-40.3	42.2	287	0.283	0.0	1.0	0.0	0.27	1.0	33.6	13.0	-40.2	42.4	287	0.283	0.0	1.0			
326	288	288	0.3	0.0	1.0	30.4	46.0	-30.3	55.1	326	0.0	0.269	1.0	33.5	13.1	-40.2	42.4	288	0.3	0.0	1.0	0.0	0.26	1.0	33.2	13.7	-40.2	42.5	288	0.3	0.0	1.0			
328	289	289	0.316	0.0	1.0	30.9	47.3	-29.4	55.7	328	0.0	0.257	1.0	33.1	13.9	-40.2	42.6	289	0.317	0.0	1.0	0.0	0.249	1.0	32.8	14.4	-40.1	42.7	289	0.317	0.0	1.0			
329	290	290	0.333	0.0	1.0	31.4	48.6	-28.5	56.4	329	0.0	0.245	1.0	32.7	14.6	-40.1	42.8	290	0.333	0.0	1.0	0.0	0.236	1.0	32.4	15.2	-40.2	43.1	290	0.333	0.0	1.0			
331	291	291	0.35	0.0	1.0	32.0	49.9	-27.5	57.0	331	0.0	0.232	1.0	32.2	15.5	-40.2	43.2	291	0.35	0.0	1.0	0.0	0.223	1.0	32.0	16.0	-40.3	43.4	291	0.35	0.0	1.0			
332	292	292	0.366	0.0	1.0	32.5	51.2	-26.5	57.7	332	0.0	0.219	1.0	31.8	16.3	-40.3	43.6	292	0.367	0.0	1.0	0.0	0.211	1.0	31.5	16.8	-40.3	43.8	292	0.367	0.0	1.0			
333	293	293	0.383	0.0	1.0	32.9	52.3	-25.7	58.3	333	0.0	0.205	1.0	31.4	17.2	-40.3	43.9	293	0.383	0.0	1.0	0.0	0.198	1.0	31.1	17.6	-40.3	44.1	293	0.383	0.0	1.0			
334	294	294	0.4	0.0	1.0	33.3	53.2	-25.0	58.8	334	0.0	0.192	1.0	30.9	18.0	-40.3	44.3	294	0.4	0.0	1.0	0.0	0.186	1.0	30.7	18.4	-40.4	44.5	294	0.4	0.0	1.0			
335	295	295	0.416	0.0	1.0	33.7	54.1	-24.4	59.4	335																									

Data of Maximum color M in colorimetric system Offset standard print; separation cmy0\*; D65 for input or output; Six hue angles of the 60 degree standard colours RYGCBM<sub>s</sub>: h<sub>ab,ds</sub> = 30.0, 90.0, 150.0, 210.0, 270.0, 330.0;  
Six hue angles of the device colours RYGCBM<sub>d</sub>: h<sub>ab,d</sub> = 32.3, 96.1, 155.5, 238.4, 306.2, 359.8; Six hue angles of the elementary colours RYGCBM<sub>e</sub>: h<sub>ab,e</sub> = 25.5, 92.3, 162.2, 217.0, 271.7, 328.6

h <sub>ab,d</sub>	h <sub>ab,s</sub>	h <sub>ab,e</sub>	rgb* dd361M	LAB* ddx361Mi (x=LabCh)	rgb* ds361Mi	LAB* dsx361Mi (x=LabCh)	rgb* dd361Mi	LAB* dex361Mi (x=LabCh)	rgb* dd361Mi	LAB* dex361Mi (x=LabCh)	rgb* dd361Mi	LAB* dex361Mi (x=LabCh)	rgb* dd361Mi	LAB* dex361Mi (x=LabCh)																		
340	300	300	0.5	0.0	1.0	35.6	58.6	-20.7	62.1	340	0.0	0.109	1.0	28.2	23.3	-40.3	46.6	300	0.5	0.0	1.0	0.0	0.106	1.0	28.1	23.5	-40.3	46.7	300	0.5	0.0	1.0
341	301	301	0.516	0.0	1.0	35.9	59.5	-19.9	62.8	341	0.0	0.091	1.0	27.7	24.3	-40.3	47.2	301	0.517	0.0	1.0	0.0	0.089	1.0	27.6	24.4	-40.3	47.2	301	0.517	0.0	1.0
342	302	302	0.533	0.0	1.0	36.2	60.5	-19.0	63.4	342	0.0	0.074	1.0	27.2	25.3	-40.4	47.7	302	0.533	0.0	1.0	0.0	0.073	1.0	27.2	25.4	-40.4	47.8	302	0.533	0.0	1.0
343	303	303	0.55	0.0	1.0	36.6	61.4	-18.2	64.0	343	0.0	0.056	1.0	26.7	26.3	-40.4	48.3	303	0.55	0.0	1.0	0.0	0.056	1.0	26.7	26.3	-40.4	48.3	303	0.55	0.0	1.0
344	304	303	0.566	0.0	1.0	36.9	62.3	-17.3	64.7	344	0.0	0.039	1.0	26.2	27.3	-40.4	48.9	304	0.567	0.0	1.0	0.0	0.039	1.0	26.2	27.3	-40.4	48.8	303	0.567	0.0	1.0
345	305	304	0.583	0.0	1.0	37.2	63.2	-16.4	65.3	345	0.0	0.021	1.0	25.7	28.3	-40.4	49.4	305	0.583	0.0	1.0	0.0	0.023	1.0	25.7	28.2	-40.4	49.4	304	0.583	0.0	1.0
346	306	305	0.6	0.0	1.0	37.6	64.1	-15.4	66.0	346	0.0	0.004	1.0	25.2	29.4	-40.3	50.0	306	0.6	0.0	1.0	0.0	0.006	1.0	25.3	29.2	-40.3	49.9	305	0.6	0.0	1.0
347	307	306	0.616	0.0	1.0	37.9	65.0	-14.5	66.6	347	0.011	0.0	1.0	25.3	30.2	-40.0	50.2	307	0.617	0.0	1.0	0.009	0.0	1.0	25.3	30.1	-40.1	50.2	306	0.617	0.0	1.0
348	308	307	0.633	0.0	1.0	38.3	65.8	-13.7	67.2	348	0.026	0.0	1.0	25.7	31.0	-39.6	50.3	308	0.633	0.0	1.0	0.023	0.0	1.0	25.6	30.8	-39.7	50.3	307	0.633	0.0	1.0
348	309	308	0.65	0.0	1.0	38.8	66.6	-13.1	67.9	348	0.041	0.0	1.0	26.0	31.8	-39.1	50.5	309	0.65	0.0	1.0	0.036	0.0	1.0	25.9	31.5	-39.3	50.4	308	0.65	0.0	1.0
349	310	309	0.666	0.0	1.0	39.3	67.3	-12.5	68.5	349	0.056	0.0	1.0	26.3	32.5	-38.7	50.6	310	0.667	0.0	1.0	0.05	0.0	1.0	26.2	32.3	-38.8	50.6	309	0.667	0.0	1.0
350	311	310	0.683	0.0	1.0	39.8	68.1	-11.9	69.1	350	0.07	0.0	1.0	26.7	33.3	-38.2	50.8	311	0.683	0.0	1.0	0.064	0.0	1.0	26.5	33.0	-38.4	50.7	310	0.683	0.0	1.0
350	312	311	0.7	0.0	1.0	40.3	68.8	-11.2	69.7	350	0.085	0.0	1.0	27.0	34.1	-37.7	50.9	312	0.7	0.0	1.0	0.078	0.0	1.0	26.9	33.7	-37.9	50.8	311	0.7	0.0	1.0
351	313	312	0.716	0.0	1.0	40.8	69.5	-10.6	70.4	351	0.1	0.0	1.0	27.3	34.8	-37.2	51.0	313	0.717	0.0	1.0	0.092	0.0	1.0	27.2	34.4	-37.5	51.0	312	0.717	0.0	1.0
351	314	313	0.733	0.0	1.0	41.3	70.3	-9.9	71.0	351	0.114	0.0	1.0	27.7	35.5	-36.7	51.2	314	0.733	0.0	1.0	0.106	0.0	1.0	27.5	35.1	-37.0	51.1	313	0.733	0.0	1.0
352	315	314	0.75	0.0	1.0	41.8	71.0	-9.2	71.6	352	0.13	0.0	1.0	27.9	36.3	-36.2	51.3	315	0.75	0.0	1.0	0.12	0.0	1.0	27.8	35.8	-36.5	51.2	314	0.75	0.0	1.0
353	316	315	0.766	0.0	1.0	42.1	71.6	-8.7	72.1	353	0.146	0.0	1.0	28.1	37.1	-35.7	51.6	316	0.767	0.0	1.0	0.135	0.0	1.0	28.0	36.6	-36.0	51.4	315	0.767	0.0	1.0
353	317	316	0.783	0.0	1.0	42.4	72.1	-8.1	72.6	353	0.163	0.0	1.0	28.2	37.9	-35.3	51.8	317	0.783	0.0	1.0	0.151	0.0	1.0	28.1	37.3	-35.6	51.7	316	0.783	0.0	1.0
353	318	317	0.8	0.0	1.0	42.7	72.7	-7.6	73.1	353	0.18	0.0	1.0	28.3	38.7	-34.8	52.1	318	0.8	0.0	1.0	0.167	0.0	1.0	28.2	38.1	-35.1	51.9	317	0.8	0.0	1.0
354	319	318	0.816	0.0	1.0	43.1	73.2	-7.0	73.6	354	0.197	0.0	1.0	28.5	39.5	-34.2	52.4	319	0.817	0.0	1.0	0.183	0.0	1.0	28.4	38.9	-34.7	52.1	318	0.817	0.0	1.0
354	320	319	0.833	0.0	1.0	43.4	73.8	-6.5	74.1	354	0.213	0.0	1.0	28.6	40.3	-33.7	52.6	320	0.833	0.0	1.0	0.199	0.0	1.0	28.5	39.6	-34.2	52.4	319	0.833	0.0	1.0
355	321	320	0.85	0.0	1.0	43.7	74.3	-5.9	74.6	355	0.23	0.0	1.0	28.7	41.1	-33.2	52.9	321	0.85	0.0	1.0	0.215	0.0	1.0	28.6	40.4	-33.7	52.6	320	0.85	0.0	1.0
355	322	321	0.866	0.0	1.0	44.0	74.9	-5.3	75.1	355	0.247	0.0	1.0	28.9	41.9	-32.6	53.1	322	0.867	0.0	1.0	0.231	0.0	1.0	28.7	41.1	-33.2	52.9	321	0.867	0.0	1.0
356	323	321	0.883	0.0	1.0	44.3	75.4	-4.7	75.6	356	0.259	0.0	1.0	29.2	42.7	-32.1	53.5	323	0.883	0.0	1.0	0.247	0.0	1.0	28.9	41.8	-32.6	53.1	321	0.883	0.0	1.0
356	324	322	0.9	0.0	1.0	44.6	76.0	-4.1	76.1	356	0.27	0.0	1.0	29.5	43.7	-31.6	54.0	324	0.9	0.0	1.0	0.258	0.0	1.0	29.2	42.7	-32.1	53.5	322	0.9	0.0	1.0
357	325	323	0.916	0.0	1.0	44.8	76.6	-3.5	76.6	357	0.282	0.0	1.0	29.9	44.6	-31.1	54.4	325	0.917	0.0	1.0	0.269	0.0	1.0	29.5	43.5	-31.7	53.9	323	0.917	0.0	1.0
357	326	324	0.933	0.0	1.0	45.1	77.1	-2.8	77.2	357	0.293	0.0	1.0	30.2	45.5	-30.6	54.8	326	0.933	0.0	1.0	0.28	0.0	1.0	29.8	44.4	-31.2	54.3	324	0.933	0.0	1.0
358	327	325	0.95	0.0	1.0	45.3	77.7	-2.2	77.7	358	0.304	0.0	1.0	30.6	46.4	-30.0	55.3	327	0.95	0.0	1.0	0.29	0.0	1.0	30.1	45.2	-30.7	54.7	325	0.95	0.0	1.0
358	328	326	0.966	0.0	1.0	45.6	78.2	-1.5	78.2	358	0.315	0.0	1.0	30.9	47.2	-29.4	55.7	328	0.967	0.0	1.0	0.301	0.0	1.0	30.5	46.1	-30.2	55.1	326	0.967	0.0	1.0
359	329	327	0.983	0.0	1.0	45.8	78.7	-0.8	78.7	359	0.326	0.0	1.0	31.3	48.1	-28.8	56.1	329	0.983	0.0	1.0	0.311	0.0	1.0	30.8	46.9	-29.6	55.6	327	0.983	0.0	1.0
359	330	328	1.0	0.0	1.0	46.1	79.3	-0.2	79.3	359	0.337	0.0	1.0	31.6	49.0	-28.2	56.6	330	1.0	0.0	1.0	0.322	0.0	1.0	31.1	47.8	-29.1	56.0	328	1.0	0.0	1.0
360	331	329	1.0	0.0	0.983	46.1	79.1	0.3	79.1	360	0.349	0.0	1.0	32.0	49.9	-27.5	57.0	331	1.0	0.0	0.983	0.332	0.0	1.0	31.5	48.6	-28.5	56.4	329	1.0	0.0	0.983
360	332	330	1.0	0.0	0.966	46.0	79.0	0.9	79.0	360	0.36	0.0	1.0	32.3	50.7	-26.9	57.5	332	1.0	0.0	0.967	0.343	0.0	1.0	31.8	49.4	-27.9	56.8	330	1.0	0.0	0.967
361	333	331	1.0	0.0	0.95	46.0	78.9	1.5	78.9	361	0.371	0.0	1.0	32.7	51.6	-26.2	57.9	333	1.0	0.0	0.95	0.354	0.0	1.0	32.1	50.3	-27.2	57.2	331	1.0	0.0	0.95
361	334	332	1.0	0.0	0.933	46.0	78.7	2.1	78.8	361	0.386	0.0	1.0	33.0	52.5	-25.5	58.4	334	1.0	0.0	0.933	0.364	0.0	1.0	32.4	51.1	-26.6	57.6	332	1.0	0.0	0.933
361	335	333	1.0	0.0	0.916	46.0	78.6	2.7	78.6	361	0.404	0.0	1.0	33.4	53.5	-24.8	59.0	335	1.0	0.0	0.917	0.375	0.0	1.0	32.8	51.9	-25.9	58.0	333	1.0	0.0	0.917
362	336	334	1.0	0.0	0.9	46.0	78.4	3.2	78.5	362	0.421	0.0	1.0	33.8	54.4	-24.1	59.6	336	1.0	0.0	0.9	0.391	0.0	1.0	33.1	52.8	-25.3	58.6	334	1.0	0.0	0.9
362	337	335	1.0	0.0	0.883	45.9	78.3	3.8	78.4	362	0.438	0.0	1.0	34.2	55.4	-23.4	60.1	337	1.0	0.0	0.883	0.408	0.0	1.0	33.5	53.7	-24.7	59.1	335	1.0	0.0	0.883
363	338	336	1.0	0.0	0.866	45.9	78.1	4.4	78.3	363	0.456	0.0	1.0	34.6	56.3	-22.6	60.7	338	1.0	0.0	0.867	0.424	0.0	1.0	33.9	54.6	-24.0	59.7	336	1.0	0.0	0.867
363	339	337	1.0	0.0	0.85	45.9	78.0	5.0	78.2	363	0.473	0.0	1.0	35.0	57.2	-21.9	61.3	339	1.0	0.0	0.85	0.441	0.0	1.0	34.3	55.5	-23.3	60.2	337	1.0	0.0	0.85
364	340	338	1.0	0.0	0.833	45.9	77.9	5.6	78.1	364	0.491	0.0																				



Data of Maximum color M in colorimetric system Offset standard print; separation cmy0\*; D65 for input or output; Six hue angles of the 60 degree standard colours RYGBM<sub>s</sub>: h<sub>ab,ds</sub> = 30.0, 90.0, 150.0, 210.0, 270.0, 330.0;

Six hue angles of the device colours RYGBM <sub>d</sub> : h <sub>ab,d</sub> = 32.3, 96.1, 155.5, 238.4, 306.2, 359.8; Six hue angles of the elementary colours RYGBM <sub>e</sub> : h <sub>ab,e</sub> = 25.5, 92.3, 162.2, 217.0, 271.7, 328.6																																
h <sub>ab,d</sub>	h <sub>ab,s</sub>	h <sub>ab,e</sub>	rgb <sup>*</sup> <sub>dd361M</sub>	LAB <sup>*</sup> <sub>ddx361Mi (x=LabCh)</sub>	rgb <sup>*</sup> <sub>ds361Mi</sub>	LAB <sup>*</sup> <sub>dsx361Mi (x=LabCh)</sub>	rgb <sup>*</sup> <sub>dd361Mi</sub>	LAB <sup>*</sup> <sub>de361Mi</sub>	rgb <sup>*</sup> <sub>dex361Mi (x=LabCh)</sub>	LAB <sup>*</sup> <sub>dd361Mi</sub>	rgb <sup>*</sup> <sub>dd361Mi</sub>	rgb <sup>*</sup> <sub>dd</sub>	rgb <sup>*</sup> <sub>ds</sub>	rgb <sup>*</sup> <sub>de</sub>																		
366	345	342	1.0	0.0	0.75	45.9	77.1	8.6	77.6	366	0.576	0.0	1.0	37.1	62.9	-16.7	65.1	345	1.0	0.0	0.75	0.539	0.0	1.0	36.4	60.8	-18.7	63.7	342	1.0	0.0	0.75
367	346	343	1.0	0.0	0.733	45.9	77.0	9.4	77.5	367	0.593	0.0	1.0	37.5	63.8	-15.8	65.7	346	1.0	0.0	0.733	0.555	0.0	1.0	36.7	61.7	-17.9	64.3	343	1.0	0.0	0.733
367	347	344	1.0	0.0	0.716	45.9	76.8	10.3	77.5	367	0.61	0.0	1.0	37.8	64.7	-14.8	66.4	347	1.0	0.0	0.717	0.571	0.0	1.0	37.0	62.6	-17.0	64.9	344	1.0	0.0	0.717
368	348	345	1.0	0.0	0.7	45.9	76.6	11.1	77.4	368	0.627	0.0	1.0	38.2	65.6	-13.8	67.1	348	1.0	0.0	0.7	0.587	0.0	1.0	37.3	63.5	-16.1	65.5	345	1.0	0.0	0.7
368	349	346	1.0	0.0	0.683	45.9	76.4	11.9	77.3	368	0.654	0.0	1.0	39.0	66.8	-12.9	68.1	349	1.0	0.0	0.683	0.603	0.0	1.0	37.7	64.3	-15.2	66.1	346	1.0	0.0	0.683
369	350	347	1.0	0.0	0.666	45.9	76.2	12.8	77.2	369	0.681	0.0	1.0	39.8	68.0	-11.9	69.1	350	1.0	0.0	0.667	0.619	0.0	1.0	38.0	65.2	-14.3	66.7	347	1.0	0.0	0.667
370	351	348	1.0	0.0	0.65	46.0	75.9	13.6	77.2	370	0.708	0.0	1.0	40.6	69.2	-10.9	70.1	351	1.0	0.0	0.65	0.641	0.0	1.0	38.6	66.2	-13.4	67.6	348	1.0	0.0	0.65
370	352	349	1.0	0.0	0.633	46.0	75.7	14.4	77.1	370	0.735	0.0	1.0	41.4	70.4	-9.8	71.1	352	1.0	0.0	0.633	0.667	0.0	1.0	39.3	67.4	-12.4	68.5	349	1.0	0.0	0.633
371	353	350	1.0	0.0	0.616	46.0	75.5	15.2	77.1	371	0.765	0.0	1.0	42.1	71.6	-8.7	72.1	353	1.0	0.0	0.617	0.692	0.0	1.0	40.1	68.5	-11.5	69.5	350	1.0	0.0	0.617
372	354	351	1.0	0.0	0.6	45.9	75.4	16.1	77.1	372	0.8	0.0	1.0	42.8	72.7	-7.5	73.1	354	1.0	0.0	0.6	0.717	0.0	1.0	40.9	69.6	-10.5	70.4	351	1.0	0.0	0.6
372	355	352	1.0	0.0	0.583	45.9	75.2	16.9	77.1	372	0.835	0.0	1.0	43.5	73.9	-6.4	74.2	355	1.0	0.0	0.583	0.743	0.0	1.0	41.6	70.7	-9.5	71.4	352	1.0	0.0	0.583
373	356	353	1.0	0.0	0.566	45.9	75.0	17.8	77.1	373	0.87	0.0	1.0	44.2	75.0	-5.1	75.2	356	1.0	0.0	0.567	0.774	0.0	1.0	42.3	71.9	-8.4	72.4	353	1.0	0.0	0.567
374	357	354	1.0	0.0	0.55	45.9	74.8	18.6	77.1	374	0.904	0.0	1.0	44.7	76.2	-3.9	76.3	357	1.0	0.0	0.55	0.807	0.0	1.0	42.9	73.0	-7.3	73.3	354	1.0	0.0	0.55
374	358	355	1.0	0.0	0.533	45.9	74.6	19.5	77.1	374	0.938	0.0	1.0	45.2	77.3	-2.6	77.3	358	1.0	0.0	0.533	0.84	0.0	1.0	43.6	74.1	-6.2	74.3	355	1.0	0.0	0.533
375	359	356	1.0	0.0	0.516	45.9	74.4	20.3	77.1	375	0.971	0.0	1.0	45.7	78.4	-1.3	78.4	359	1.0	0.0	0.517	0.873	0.0	1.0	44.2	75.1	-5.0	75.3	356	1.0	0.0	0.517
375	360	357	1.0	0.0	0.5	45.9	74.2	21.1	77.1	375	1.0	0.0	0.994	46.1	79.3	0.0	79.3	360	1.0	0.0	0.5	0.736	0.0	1.0	41.4	70.5	-9.7	71.1	352	1.0	0.0	0.5
376	361	353	1.0	0.0	0.483	45.8	74.1	22.1	77.3	376	1.0	0.0	0.955	46.1	79.0	1.4	79.0	361	1.0	0.0	0.483	0.771	0.0	1.0	42.2	71.8	-8.5	72.3	353	1.0	0.0	0.483
377	362	354	1.0	0.0	0.466	45.8	73.9	23.1	77.4	377	1.0	0.0	0.916	46.0	78.6	2.7	78.7	362	1.0	0.0	0.467	0.81	0.0	1.0	43.0	73.1	-7.2	73.4	354	1.0	0.0	0.467
378	363	355	1.0	0.0	0.45	45.8	73.8	24.0	77.6	378	1.0	0.0	0.876	46.0	78.3	4.1	78.4	363	1.0	0.0	0.45	0.849	0.0	1.0	43.8	74.4	-5.9	74.6	355	1.0	0.0	0.45
378	364	356	1.0	0.0	0.433	45.8	73.6	25.0	77.7	378	1.0	0.0	0.839	46.0	78.0	5.5	78.2	364	1.0	0.0	0.433	0.887	0.0	1.0	44.4	75.6	-4.5	75.8	356	1.0	0.0	0.433
379	365	357	1.0	0.0	0.416	45.8	73.4	25.9	77.9	379	1.0	0.0	0.802	46.0	77.7	6.8	78.0	365	1.0	0.0	0.417	0.925	0.0	1.0	45.0	76.9	-3.1	77.0	357	1.0	0.0	0.417
380	366	358	1.0	0.0	0.4	45.8	73.2	26.9	78.0	380	1.0	0.0	0.765	46.0	77.3	8.1	77.8	366	1.0	0.0	0.4	0.963	0.0	1.0	45.6	78.1	-1.6	78.1	358	1.0	0.0	0.4
380	367	359	1.0	0.0	0.383	45.8	73.0	27.8	78.2	380	1.0	0.0	0.734	46.0	77.0	9.5	77.6	367	1.0	0.0	0.383	1.0	0.0	1.0	46.1	79.3	-0.1	79.3	359	1.0	0.0	0.383
381	368	360	1.0	0.0	0.366	45.8	72.9	28.7	78.4	381	1.0	0.0	0.708	46.0	76.7	10.8	77.5	368	1.0	0.0	0.367	1.0	0.0	0.956	46.1	79.0	1.3	79.0	360	1.0	0.0	0.367
382	369	362	1.0	0.0	0.35	45.8	72.8	29.6	78.6	382	1.0	0.0	0.681	46.0	76.4	12.1	77.4	369	1.0	0.0	0.35	1.0	0.0	0.912	46.0	78.6	2.9	78.7	362	1.0	0.0	0.35
382	370	363	1.0	0.0	0.333	45.7	72.7	30.4	78.8	382	1.0	0.0	0.655	46.0	76.1	13.4	77.2	370	1.0	0.0	0.333	1.0	0.0	0.869	46.0	78.2	4.4	78.3	363	1.0	0.0	0.333
383	371	364	1.0	0.0	0.316	45.7	72.6	31.2	79.1	383	1.0	0.0	0.628	46.0	75.7	14.7	77.1	371	1.0	0.0	0.317	1.0	0.0	0.828	46.0	77.9	5.9	78.1	364	1.0	0.0	0.317
383	372	365	1.0	0.0	0.3	45.7	72.5	32.1	79.3	383	1.0	0.0	0.602	46.0	75.4	16.0	77.1	372	1.0	0.0	0.3	1.0	0.0	0.786	46.0	77.5	7.4	77.9	365	1.0	0.0	0.3
384	373	366	1.0	0.0	0.283	45.6	72.4	32.9	79.6	384	1.0	0.0	0.576	46.0	75.2	17.4	77.1	373	1.0	0.0	0.283	1.0	0.0	0.746	46.0	77.1	8.8	77.7	366	1.0	0.0	0.283
385	374	367	1.0	0.0	0.266	45.6	72.3	33.8	79.8	385	1.0	0.0	0.55	45.9	74.9	18.7	77.2	374	1.0	0.0	0.267	1.0	0.0	0.717	46.0	76.8	10.3	77.5	367	1.0	0.0	0.267
385	375	368	1.0	0.0	0.25	45.6	72.1	34.6	80.0	385	1.0	0.0	0.524	45.9	74.5	20.0	77.2	375	1.0	0.0	0.25	1.0	0.0	0.687	46.0	76.5	11.8	77.4	368	1.0	0.0	0.25
386	376	369	1.0	0.0	0.233	45.6	72.1	35.3	80.3	386	1.0	0.0	0.498	45.9	74.2	21.3	77.2	376	1.0	0.0	0.233	1.0	0.0	0.658	46.0	76.1	13.3	77.2	369	1.0	0.0	0.233
386	377	370	1.0	0.0	0.216	45.6	72.0	36.1	80.5	386	1.0	0.0	0.475	45.9	74.0	22.6	77.4	377	1.0	0.0	0.217	1.0	0.0	0.628	46.0	75.7	14.7	77.1	370	1.0	0.0	0.217
387	378	372	1.0	0.0	0.2	45.6	71.9	36.8	80.8	387	1.0	0.0	0.451	45.9	73.8	24.0	77.6	378	1.0	0.0	0.2	1.0	0.0	0.599	46.0	75.4	16.2	77.1	372	1.0	0.0	0.2
387	379	373	1.0	0.0	0.183	45.5	71.8	37.5	81.0	387	1.0	0.0	0.428	45.9	73.6	25.3	77.8	379	1.0	0.0	0.183	1.0	0.0	0.57	46.0	75.1	17.6	77.1	373	1.0	0.0	0.183
388	380	374	1.0	0.0	0.166	45.5	71.7	38.2	81.3	388	1.0	0.0	0.404	45.9	73.3	26.7	78.0	380	1.0	0.0	0.167	1.0	0.0	0.541	45.9	74.8	19.1	77.2	374	1.0	0.0	0.167
388	381	375	1.0	0.0	0.15	45.5	71.6	39.0	81.5	388	1.0	0.0	0.38	45.8	73.1	28.0	78.3	381	1.0	0.0	0.15	1.0	0.0	0.512	45.9	74.4	20.6	77.2	375	1.0	0.0	0.15
389	382	376	1.0	0.0	0.133	45.5	71.5	39.7	81.8	389	1.0	0.0	0.353	45.8	72.9	29.4	78.6	382	1.0	0.0	0.133	1.0	0.0	0.485	45.9	74.1	22.0	77.3	376	1.0	0.0	0.133
389	383	377	1.0	0.0	0.116	45.5	71.4	40.4	82.1	389	1.0	0.0	0.325	45.8	72.7	30.9	79.0	383	1.0	0.0	0.117	1.0	0.0	0.459	45.9	73.9	23.6	77.6	377	1.0	0.0	0.117
389	384	378	1.0	0.0	0.1	45.5	71.3	41.0	82.3	389	1.0	0.0	0.297	45.7	72.5	32.3	79.4	384	1.0	0.0	0.1	1.0	0.0	0.433	45.9	73.6	25.1	77.8	378	1.0	0.0	0.1
390	385	379	1.0	0.0	0.083	45.5	71.3	41.6																								

http://130.149.60.45/~farbmetrik/RS58/RS58L0FA.TXT /.PS; 3D-linealización F: 3D-linealización RS58/RS58LS30FA.DAT en archivo (F), página 18/33

Table with columns: nrf, HHC\*File, rgb\*File, icr\*File, hsa\*File, rgb\*File, LabC\*File, LabC\*File, cmy0\*sep\*File, rgb\*File, hsa\*File, LabC\*File, LabC\*File, delta. The table contains a large number of rows with numerical data for each column.

vea archivos semejantes: http://130.149.60.45/~farbmetrik/RS58/RS58.HTM información técnica: http://www.ps.bam.de o http://130.149.60.45/~farbmetrik

entrada: rgb/cmyk -> rgbd salida: 3D-linealización a cmy0\* de

gráfico TUB-RS58; 1080 colores estándar colores y diferencia en color, ΔE\*

RS580-TN; 1833-F

2-1131731-F0







http://130.149.60.45/~farbmetrik/RS58/RS58LOFA.TXT /.PS; 3D-linealización F: 3D-linealización RS58/RS58LS30FA.DAT en archivo (F), página 22/33

Table with 24 columns: n, HHC\*File, rgb\*File, icr\*File, hsa\*File, rgpb\*File, LabC0\*File, delta, cmy0\*sep,File, cmyp\*sep,File, hsa\*File, rgpb\*File, LabC0\*File, delta, cmy0\*sep,File, cmyp\*sep,File, hsa\*File, rgpb\*File, LabC0\*File, delta. Rows 162-242.

entrada: rgb/cmyk -> rgbd salida: 3D-linealización a cmy0\* de

gráfico TUB-RS58; 1080 colores estándar colores y diferencia en color, ΔE\*

RS580 - 22/33-F





http://130.149.60.45/~farbmetrik/RS58/RS58LOFA.TXT /.PS; 3D-linealización F: 3D-linealización RS58/RS58LS30FA.DAT en archivo (F), página 24/33

Table with 15 columns: n, HHC\*Fide, rpb\*Fide, icr\*Fide, rpb\*Fide, rha\*Fide, rpb\*Fide, LabCM\*Fide, cmy0\*sep\*Fide, rpb\*Fide, rha\*Fide, LabCM\*Fide, rpb\*Fide, LabCM\*Fide, delta. Rows 324-404.

entrada: rgb/cmyk -> rgbd salida: 3D-linealización a cmy0\* de









n	HC*File	rgb*File	icr*File	hsa*File	rgb*File	LabCM*File	cmyp*sep*File	cmyp*sep*File	hsa*File	rgb*File	LabCM*File	delta
567	R00Y_087.087a	0.875 0.0 0.125	0.875 0.875 0.437	390	0.875 0.0 0.224	42.9 63.1	0.173 0.986	0.0 0.0	0.986 0.0	0.0 0.0	45.6 72.2	34.4 80.0
568	R00Y_087.087a	0.875 0.0 0.125	0.875 0.875 0.437	382	0.875 0.0 0.424	43.2 64.3	0.175 0.983	0.0 0.0	0.978 0.0	0.0 0.0	45.8 74.4	34.4 80.0
569	R23Y_087.087a	0.875 0.0 0.375	0.875 0.875 0.437	374	0.875 0.0 0.627	42.4 67.2	0.175 0.986	0.0 0.0	0.986 0.0	0.0 0.0	45.9 76.8	34.4 80.0
570	B70R_087.087a	0.875 0.0 0.625	0.875 0.875 0.437	365	0.809 0.0 0.875	42.4 67.2	0.236 0.981	0.0 0.0	0.166 0.0	0.0 0.0	45.0 77.6	34.4 80.0
571	B63R_087.087a	0.875 0.0 0.625	0.875 0.875 0.437	355	0.485 0.0 0.875	35.1 64.0	0.368 0.976	0.0 0.0	0.145 0.0	0.0 0.0	41.6 70.7	34.4 80.0
572	B56R_087.087a	0.875 0.0 0.625	0.875 0.875 0.437	346	0.485 0.0 0.875	35.1 64.0	0.529 0.991	0.0 0.0	0.145 0.0	0.0 0.0	41.6 70.7	34.4 80.0
573	B50R_087.087a	0.875 0.0 0.625	0.875 0.875 0.437	338	0.371 0.0 0.875	32.7 47.7	0.606 0.963	0.0 0.0	0.133 0.0	0.0 0.0	38.8 68.0	34.4 80.0
574	B44R_100.100a	0.875 0.0 1.0	0.875 0.875 0.437	330	0.246 0.0 1.0	28.8 41.8	0.752 1.0	0.0 0.0	0.246 0.0	0.0 0.0	28.8 41.8	34.4 80.0
575	B44R_100.100a	0.875 0.0 1.0	0.875 0.875 0.437	323	0.875 0.038 0.0	43.9 59.5	0.171 0.947	0.0 0.0	0.0 0.0	0.0 0.0	46.6 68.0	34.4 80.0
576	R00Y_087.087a	0.875 0.125 0.125	0.875 0.75 0.5	390	0.875 0.125 0.316	49.2 54.1	0.138 0.847	0.0 0.0	0.254 0.0	0.0 0.0	45.6 72.2	34.4 80.0
577	R00Y_087.087a	0.875 0.125 0.125	0.875 0.75 0.5	381	0.875 0.125 0.509	49.4 55.7	0.142 0.847	0.0 0.0	0.254 0.0	0.0 0.0	45.6 72.2	34.4 80.0
578	R35Y_087.087a	0.875 0.125 0.375	0.875 0.75 0.5	371	0.875 0.125 0.745	49.4 58.4	0.147 0.844	0.0 0.0	0.286 0.0	0.0 0.0	45.9 77.8	34.4 80.0
579	R18Y_087.087a	0.875 0.125 0.375	0.875 0.75 0.5	360	0.677 0.125 0.875	46.0 52.8	0.321 0.852	0.0 0.0	0.321 0.0	0.0 0.0	41.4 70.4	34.4 80.0
580	R00Y_087.087a	0.875 0.125 0.625	0.875 0.75 0.5	349	0.577 0.125 0.875	43.2 48.2	0.443 0.844	0.0 0.0	0.443 0.0	0.0 0.0	37.6 64.3	34.4 80.0
581	B63R_087.087a	0.875 0.125 0.625	0.875 0.75 0.5	339	0.455 0.125 0.875	40.7 41.6	0.537 0.843	0.0 0.0	0.44 0.0	0.0 0.0	35.4 62.2	34.4 80.0
582	B57R_087.087a	0.875 0.125 0.625	0.875 0.75 0.5	330	0.366 0.125 0.875	35.8 38.5	0.635 0.836	0.0 0.0	0.44 0.0	0.0 0.0	31.1 47.7	34.4 80.0
583	B50R_087.087a	0.875 0.125 0.625	0.875 0.75 0.5	323	0.326 0.125 0.875	37.1 35.9	0.675 0.836	0.0 0.0	0.44 0.0	0.0 0.0	28.2 46.2	34.4 80.0
584	B43R_100.100a	0.875 0.125 1.0	0.875 0.75 0.5	310	0.875 0.176 0.125	50.5 49.9	0.169 0.814	0.0 0.0	0.169 0.0	0.0 0.0	51.7 66.5	34.4 80.0
585	R26Y_087.087a	0.875 0.25 0.125	0.875 0.75 0.5	46	0.875 0.25 0.409	55.4 45.1	0.135 0.733	0.0 0.0	0.309 0.0	0.0 0.0	47.3 65.5	34.4 80.0
586	R15Y_087.087a	0.875 0.25 0.125	0.875 0.75 0.5	39	0.875 0.25 0.606	55.6 46.9	0.111 0.739	0.0 0.0	0.309 0.0	0.0 0.0	45.6 72.2	34.4 80.0
587	R00Y_087.087a	0.875 0.25 0.375	0.875 0.625 0.562	390	0.875 0.25 0.875	55.6 46.9	0.119 0.739	0.0 0.0	0.309 0.0	0.0 0.0	45.6 72.2	34.4 80.0
588	R31Y_087.087a	0.875 0.25 0.375	0.875 0.625 0.562	379	0.682 0.25 0.875	52.0 42.8	0.128 0.733	0.0 0.0	0.309 0.0	0.0 0.0	45.9 77.6	34.4 80.0
589	B09R_087.087a	0.875 0.25 0.625	0.875 0.625 0.562	367	0.446 0.25 0.875	48.8 38.3	0.442 0.718	0.0 0.0	0.107 0.0	0.0 0.0	40.0 68.5	34.4 80.0
590	B09R_087.087a	0.875 0.25 0.625	0.875 0.625 0.562	355	0.411 0.25 0.875	48.8 38.3	0.597 0.714	0.0 0.0	0.107 0.0	0.0 0.0	31.1 47.7	34.4 80.0
591	B09R_087.087a	0.875 0.25 0.625	0.875 0.625 0.562	341	0.411 0.25 0.875	48.8 38.3	0.807 0.699	0.0 0.0	0.107 0.0	0.0 0.0	21.0 40.3	34.4 80.0
592	B23R_100.100a	0.875 0.25 1.0	0.875 0.625 0.562	321	0.875 0.289 0.0	53.0 49.4	0.168 0.699	0.0 0.0	0.289 0.0	0.0 0.0	40.3 59.7	34.4 80.0
593	R18Y_087.087a	0.875 0.375 0.125	0.875 0.75 0.5	49	0.875 0.375 0.125	55.1 39.2	0.144 0.691	0.0 0.0	0.144 0.0	0.0 0.0	44.2 55.3	34.4 80.0
594	R18Y_087.087a	0.875 0.375 0.125	0.875 0.75 0.5	49	0.875 0.375 0.125	55.1 39.2	0.144 0.691	0.0 0.0	0.144 0.0	0.0 0.0	44.2 55.3	34.4 80.0
595	R18Y_087.087a	0.875 0.375 0.125	0.875 0.75 0.5	49	0.875 0.375 0.125	55.1 39.2	0.144 0.691	0.0 0.0	0.144 0.0	0.0 0.0	44.2 55.3	34.4 80.0
596	R18Y_087.087a	0.875 0.375 0.125	0.875 0.75 0.5	41	0.875 0.375 0.125	57.3 36.1	0.108 0.682	0.0 0.0	0.145 0.0	0.0 0.0	48.6 63.4	34.4 80.0
597	R00Y_087.087a	0.875 0.375 0.375	0.875 0.5 0.625	390	0.875 0.375 0.502	61.7 36.1	0.108 0.682	0.0 0.0	0.145 0.0	0.0 0.0	48.6 63.4	34.4 80.0
598	R26Y_087.087a	0.875 0.375 0.375	0.875 0.5 0.625	376	0.743 0.375 0.703	61.9 38.0	0.106 0.616	0.0 0.0	0.145 0.0	0.0 0.0	45.6 72.2	34.4 80.0
599	R00Y_087.087a	0.875 0.375 0.625	0.875 0.5 0.625	360	0.636 0.375 0.875	56.9 35.2	0.246 0.616	0.0 0.0	0.145 0.0	0.0 0.0	41.4 70.4	34.4 80.0
600	B61R_087.087a	0.875 0.375 0.625	0.875 0.5 0.625	344	0.535 0.375 0.875	54.4 23.8	0.461 0.579	0.0 0.0	0.145 0.0	0.0 0.0	36.0 54.2	34.4 80.0
601	B50R_087.087a	0.875 0.375 0.625	0.875 0.5 0.625	330	0.489 0.375 0.875	50.0 25.5	0.584 0.584	0.0 0.0	0.145 0.0	0.0 0.0	31.1 47.7	34.4 80.0
602	B40R_100.100a	0.875 0.375 1.0	0.875 0.5 0.625	319	0.875 0.408 0.0	58.5 28.0	0.163 0.584	0.0 0.0	0.145 0.0	0.0 0.0	42.2 55.3	34.4 80.0
603	R58Y_087.087a	0.875 0.5 0.125	0.875 0.75 0.5	60	0.875 0.423 0.125	60.1 28.7	0.117 0.572	0.0 0.0	0.145 0.0	0.0 0.0	41.4 70.4	34.4 80.0
604	R58Y_087.087a	0.875 0.5 0.125	0.875 0.75 0.5	60	0.875 0.423 0.125	60.1 28.7	0.117 0.572	0.0 0.0	0.145 0.0	0.0 0.0	41.4 70.4	34.4 80.0
605	R58Y_087.087a	0.875 0.5 0.125	0.875 0.75 0.5	60	0.875 0.423 0.125	60.1 28.7	0.117 0.572	0.0 0.0	0.145 0.0	0.0 0.0	41.4 70.4	34.4 80.0
606	R23Y_087.087a	0.875 0.5 0.375	0.875 0.5 0.625	44	0.875 0.438 0.25	61.9 29.5	0.139 0.562	0.0 0.0	0.145 0.0	0.0 0.0	45.6 72.2	34.4 80.0
607	R18Y_087.087a	0.875 0.5 0.375	0.875 0.5 0.625	44	0.875 0.438 0.25	61.9 29.5	0.139 0.562	0.0 0.0	0.145 0.0	0.0 0.0	45.6 72.2	34.4 80.0
608	R18Y_087.087a	0.875 0.5 0.625	0.875 0.375 0.687	390	0.875 0.5 0.595	67.9 27.0	0.094 0.544	0.0 0.0	0.145 0.0	0.0 0.0	45.6 72.2	34.4 80.0
609	B63R_087.087a	0.875 0.5 0.625	0.875 0.375 0.687	371	0.875 0.5 0.81	68.0 29.2	0.22 2.2	0.0 0.0	0.145 0.0	0.0 0.0	45.6 72.2	34.4 80.0
610	B50R_087.087a	0.875 0.5 0.625	0.875 0.375 0.687	349	0.726 0.5 0.875	64.9 24.1	0.444 0.444	0.0 0.0	0.145 0.0	0.0 0.0	31.1 47.7	34.4 80.0
611	B38R_100.100a	0.875 0.5 1.0	0.875 0.375 0.687	330	0.62 0.5 0.875	62.5 17.9	0.622 0.444	0.0 0.0	0.145 0.0	0.0 0.0	27.7 46.2	34.4 80.0
612	R00Y_087.087a	0.875 0.5 1.0	0.875 0.75 0.5	316	0.875 0.5 0.75	51.0 61.8	0.157 0.481	0.0 0.0	0.145 0.0	0.0 0.0	41.4 70.4	34.4 80.0
613	R63Y_087.087a	0.875 0.625 0.125	0.875 0.75 0.5	71	0.875 0.507 0.0	63.8 18.0	0.137 0.456	0.0 0.0	0.145 0.0	0.0 0.0	41.4 70.4	34.4 80.0
614	R63Y_087.087a	0.875 0.625 0.125	0.875 0.75 0.5	71	0.875 0.532 0.125	65.5 18.4	0.137 0.456	0.0 0.0	0.145 0.0	0.0 0.0	41.4 70.4	34.4 80.0
615	R00Y_087.087a	0.875 0.625 0.375	0.875 0.625 0.562	67	0.875 0.574 0.375	69.3 19.1	0.137 0.456	0.0 0.0	0.145 0.0	0.0 0.0	41.4 70.4	34.4 80.0
616	R31Y_087.087a	0.875 0.625 0.375	0.875 0.625 0.562	60	0.875 0.592 0.5	70.9 19.6	0.105 0.386	0.0 0.0	0.145 0.0	0.0 0.0	41.4 70.4	34.4 80.0
617	R00Y_087.087a	0.875 0.625 0.625	0.875 0.75 0.5	390	0.875 0.625 0.688	74.2 18.0	0.105 0.386	0.0 0.0	0.145 0.0	0.0 0.0	41.4 70.4	34.4 80.0
618	R00Y_087.087a	0.875 0.625 0.625	0.875 0.75 0.5	360	0.809 0.625 0.875	73.1 17.9	0.139 0.386	0.0 0.0	0.145 0.0	0.0 0.0	41.4 70.4	34.4 80.0
619	B50R_087.087a	0.875 0.625 0.625	0.875 0.75 0.5	330	0.705 0.625 0.875	70.5 11.6	0.352 0.345	0.0 0.0	0.145 0.0	0.0 0.0	26.5 32.9	34.4 80.0
620	B34R_100.100a	0.875 0.625 1.0	0.875 0.75 0.5	311	0.649 0.625 1.0	69.7 12.3	0.352 0.345	0.0 0.0	0.145 0.0	0.0 0.0	26.5 32.9	34.4 80.0
621	R86Y_087.087a	0.875 0.75 0.125	0.875 0.75 0.5	81	0.875 0.615 0.0	69.3 8.2	0.152 0.376	0.0 0.0	0.145 0.0	0.0 0.0	41.4 70.4	34.4 80.0
622	R86Y_087.087a	0.875 0.75 0.125	0.875 0.75 0.5	81	0.875 0.638 0.125	71.1 8.1	0.152 0.376	0.0 0.0	0.145 0.0	0.0 0.0	41.4 70.4	34.4 80.0
623	R31Y_087.087a	0.875 0.75 0.375	0.875 0.625 0.562	79	0.875 0.655 0.275	72.3 8.5	0.134 0.356	0.0 0.0	0.145 0.0	0.0 0.0	41.4 70.4	34.4 80.0
624	R31Y_087.087a	0.875 0.75 0.375	0.875 0.625 0.562	79	0.875 0.655 0.275	72.3 8.5	0.134 0.356	0.0 0.0	0.145 0.0	0.0 0.0	41.4 70.4	34.4 80.0
625	R63Y_087.087a	0.875 0.75 0.625	0.875 0.375 0.687	76	0.875 0.703 0.5	74.3 9.2	0.119 0.303	0.0 0.0	0.145 0.0	0.0 0.0	41.4 70.4	34.4 80.0
626	R63Y_087.087a	0.875 0.75 0.625	0.875 0.375 0.687	76	0.875 0.703 0.5	74.3 9.2	0.119 0.303	0.0 0.0	0.145 0.0	0.0 0.0	41.4 70.4	34.4 80.0
627	R00Y_087.087a	0.875 0.75 0.625	0.875 0.375 0.687	60	0.875 0.724 0.625	77.8 8.0	0.117 0.285	0.0 0.0	0.145 0.0	0.0 0.0	41.4 70.4	34.4 80.0
628	B50R_087.087a	0.875 0.75 0.625	0.875 0.375 0.687	390								

http://130.149.60.45/~farbmetrik/RS58/RS58LOFA.TXT /.PS; 3D-linealización F: 3D-linealización RS58/RS58LS30FA.DAT en archivo (F), página 28/33

Table with 28 columns: n, HHC\*File, rpb\*File, icr\*File, rha\*File, rpb\*File, LabCM\*File, LabCM\*File, cmy0\*sep, cmy0\*sep, rha\*File, rpb\*File, LabCM\*File, LabCM\*File, delta. Rows list various color patches and their corresponding colorimetric data.

entrada: rgb/cmyk -> rgbd salida: 3D-linealización a cmy0\* de gráfico TUB-RS58; 1080 colores estándar colores y diferencia en color, ΔE\*<sup>\*</sup>

http://130.149.60.45/~farbmetrik/RS58/RS58LOFA.TXT /.PS; 3D-linealización F: 3D-linealización RS58/RS58LS30FA.DAT en archivo (F), página 29/33

Table with columns: n, HIC\*File, rpb\*File, icr\*File, hsa\*File, rpb\*File, LabC0\*File, cmy0\*sep\*File, rpb\*File, hsa\*File, LabC0\*File, delta. It contains a large grid of numerical data for various file types and color channels.

entrada: rgb/cmyk -> rgbde salida: 3D-linealización a cmy0\* de









