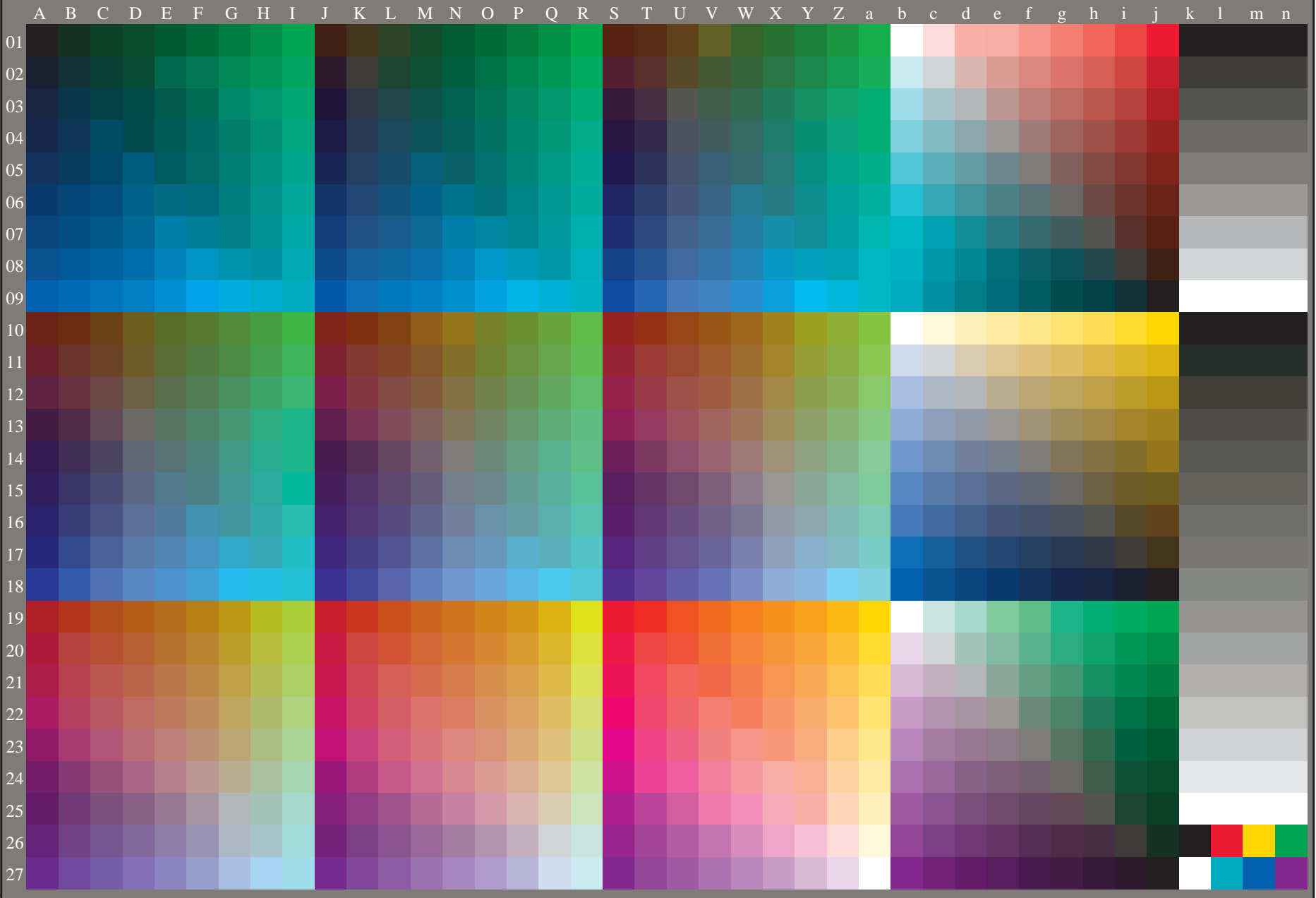


http://130.149.60.45/~farbmetrik/PE43/PE43L0FP.PDF /.PS; 3D-linearization
F: 3D-linearization PE43/PE43LE30FP.DAT in file (F), page 2/2

see similar files: <http://130.149.60.45/~farbmetrik/PE43/PE43L0FP.PDF> / .PS
technical information: <http://www.ps.bam.de> or <http://130.149.60.45/~farbmetrik>

TUB registration: 20130201-PE43/PE43L0FP.PDF /.PS
application for measurement of offset print output, separation cmykn6* (CMYK)
TUB material: code=thad4ta



1-113130-L0

PE430-73

TUB-test chart PE43; standard test chart
1080 standard colours, 3D=1, de=1, cmyk*

input: *rgb/cmyk* -> *rgb_{de}*
output: 3D-linearization to *cmyk*_{de}*

1-113130-F0