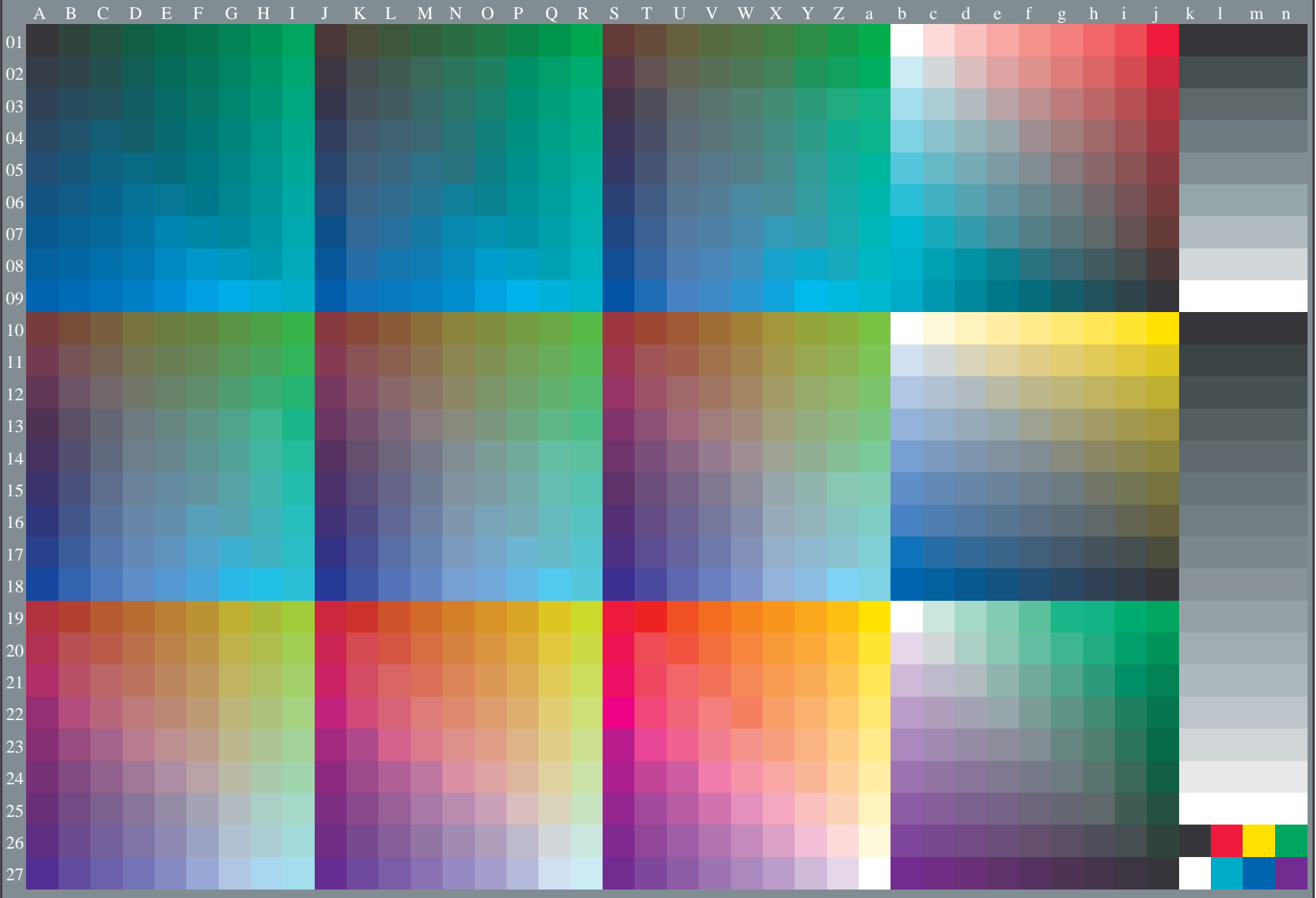


http://130.149.60.45/~farbmetrik/PE46/PE46L0FP.PDF /.PS; 3D-linearization
F: 3D-linearization PE46/PE46LE30FP.DAT in file (F), page 2/2

see similar files: <http://130.149.60.45/~farbmetrik/PE46/PE46L0FP.PDF> / .PS
technical information: <http://www.ps.bam.de> or <http://130.149.60.45/~farbmetrik>

TUB registration: 20130201-PE46/PE46L0FP.PDF /.PS
application for measurement of offset print output, separation $cmy0^*$ (CMY0)
TUB material: code=thad4ta



1-113131-L0

PE460-73

TUB-test chart PE46; standard test chart
1080 standard colours, 3D=1, de=1, $cmy0^*$

input: $rgb/cmyk \rightarrow rgb_{de}$
output: 3D-linearization to $cmy0^*_{de}$

1-113131-F0

C

M

Y

O

L

V

V
L
O
Y
M
C