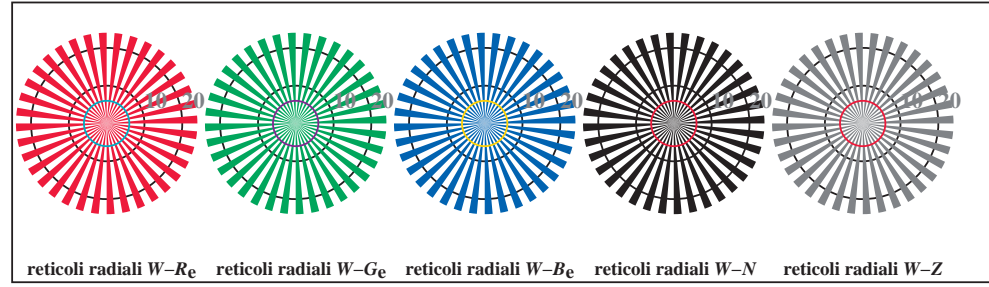


vedere dei file simili: <http://130.149.60.45/~farbmetrik/RE97/RE97.HTM>
Informazioni tecniche: <http://www.ps.bam.de> o <http://130.149.60.45/~farbmetrik>

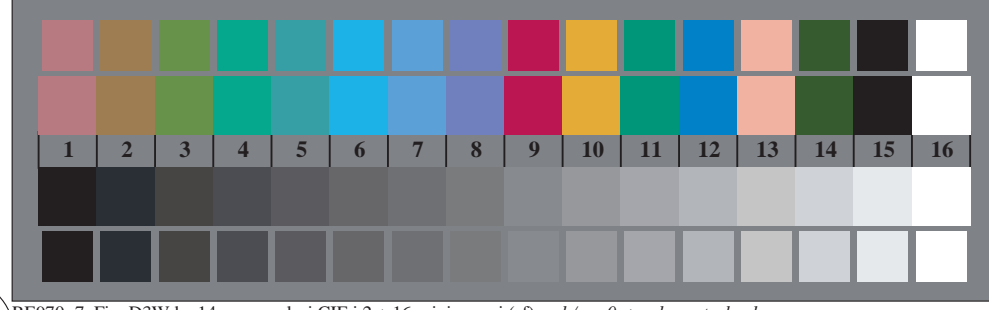
TUB iscrizione: 20130201-RE97/RE97L0FP.PDF /.PS
la domanda per la misura uscita nella stampa di offset, separazionecmy6* (CMYK)
TUB materiale: code=rhata



RE970-3, Fig. D1Wde: motivo floreale, 14 prova colori CIE i 2 + 16 grigio passi (sf); ; PS 4 colorimage



RE970-5, Fig. D2Wde: reticoli radiali W-Re; W-Ge; W-Be; W-N; PS operator rgb->rgbde setrgbcolor



RE970-7, Fig. D3Wde: 14 prova colori CIE i 2 + 16 grigio passi (sf); rgb/cmy0->rgbde setrgbcolor

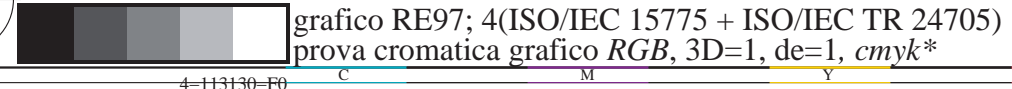
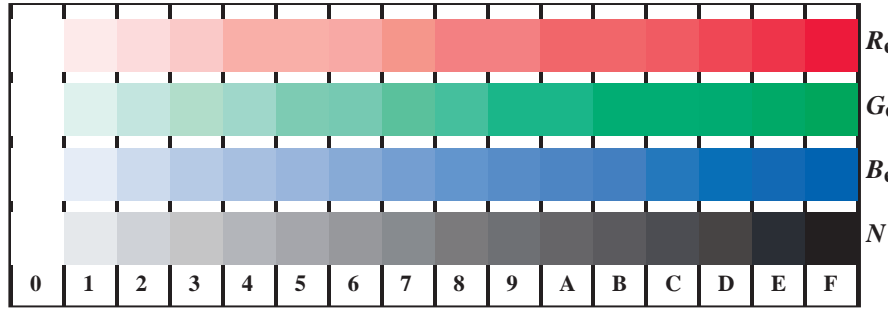
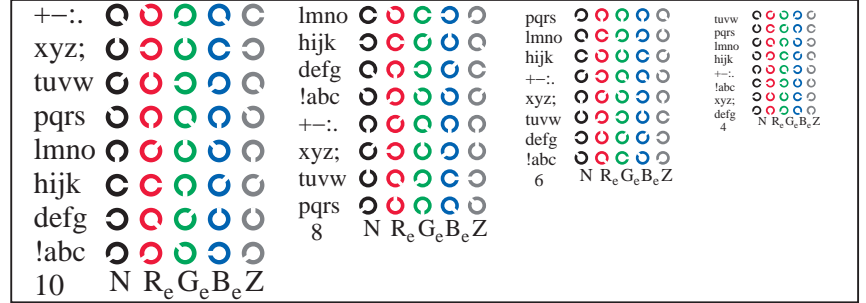


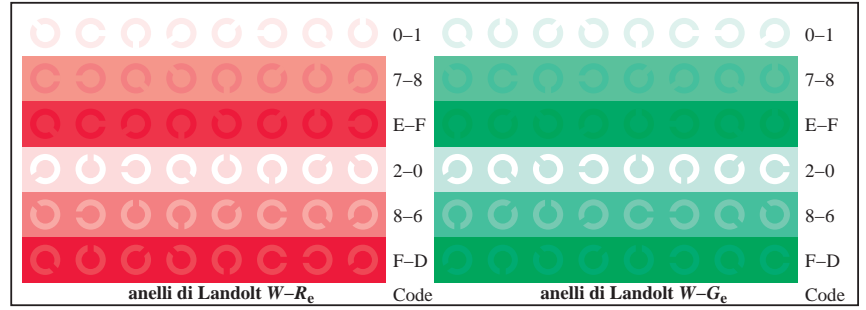
grafico RE97; 4(ISO/IEC 15775 + ISO/IEC TR 24705)
prova cromatica grafico RGB, 3D=1, de=1, cmyk*



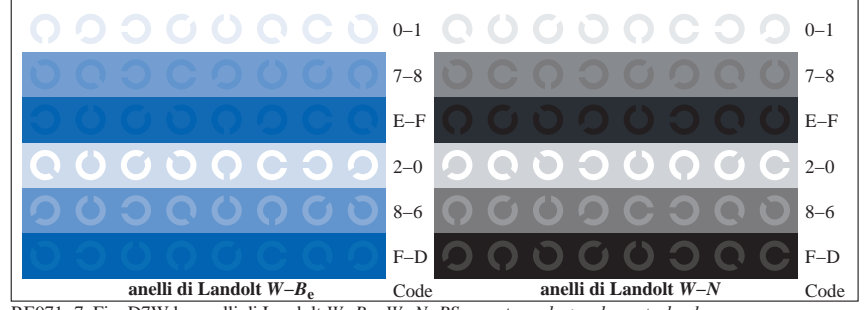
RE971-1, Fig. D4Wde: 16 equidistante passi W-Re; W-Ge; W-Be; W-N; rgb/cmy0->rgbde setrgbcolor



RE971-3, Fig. D5Wde: codice i Landolt anelli N; R_e; G_e; B_e; Z; PS operator rgb->rgbde setrgbcolor



RE971-5, Fig. D6Wde: anelli di Landolt W-Re; W-Ge; PS operator rgb->rgbde setrgbcolor



RE971-7, Fig. D7Wde: anelli di Landolt W-Be; W-N; PS operator rgb->rgbde setrgbcolor

immettere: rgb/cmyk -> rgbde
uscita: 3D-linearizzazione a cmyk*_{de}