

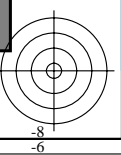
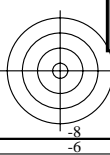
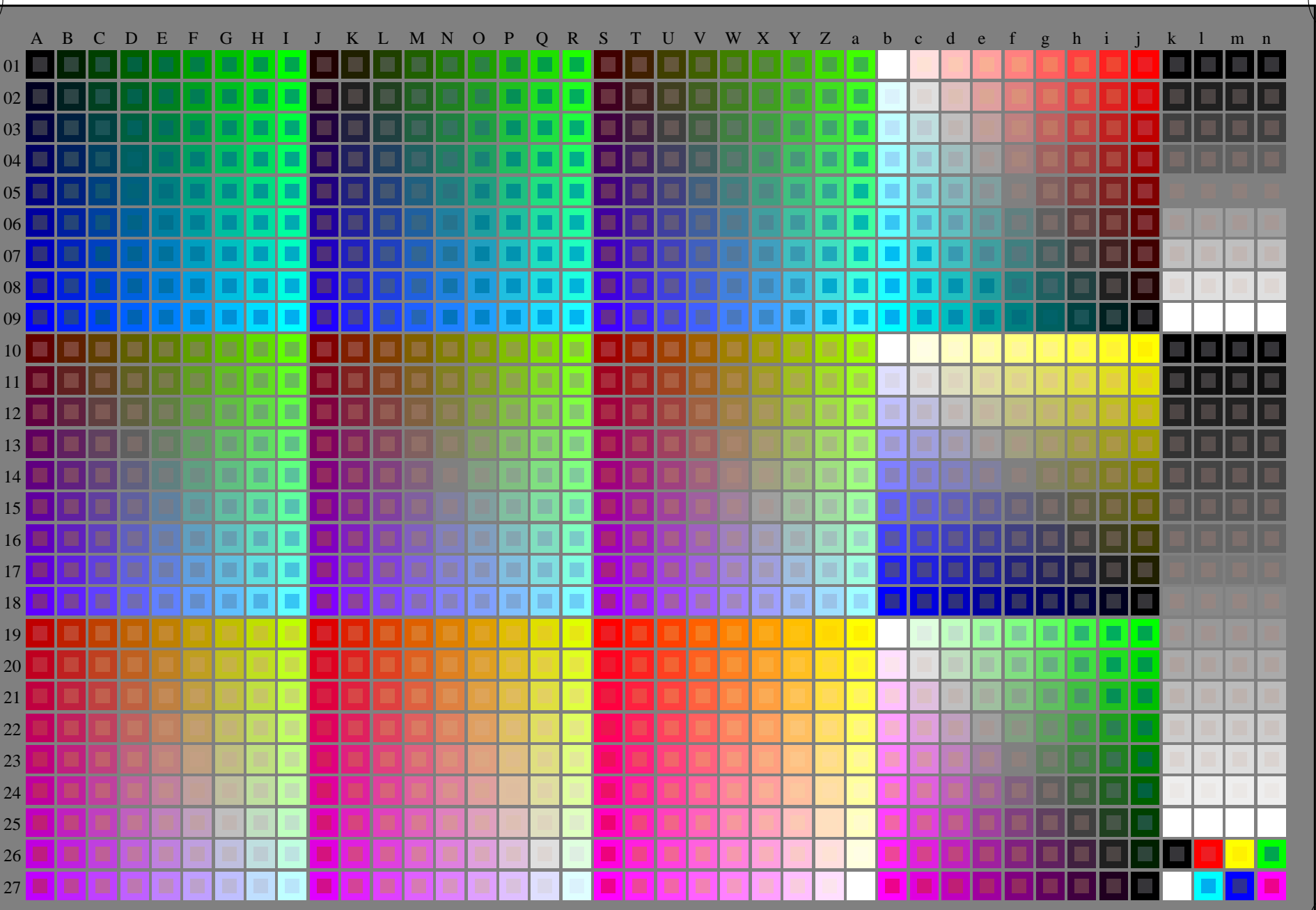
http://130.149.60.45/~farbmetrik/SS19/SS19L0NA.TXT /.PS; comience salida
N: ninguna 3D-linealización (OL) en archivo (F) o PS-startup (S), página 1/33



vea archivos semejantes: <http://130.149.60.45/~farbmetrik/SS19/SS19.HTM>
información técnica: <http://www.ps.bam.de> o <http://130.149.60.45/~farbmetrik>

TUB matrícula: 20130201-SS19/SS19L0NA.TXT /.PS
aplicación para la medida salida de impresora láser

TUB material: code=rh4ta



SS190-7N
gráfico TUB-SS19; 1080 colores estándar
gráfico según a DIN 33872

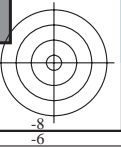
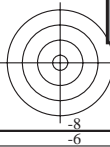
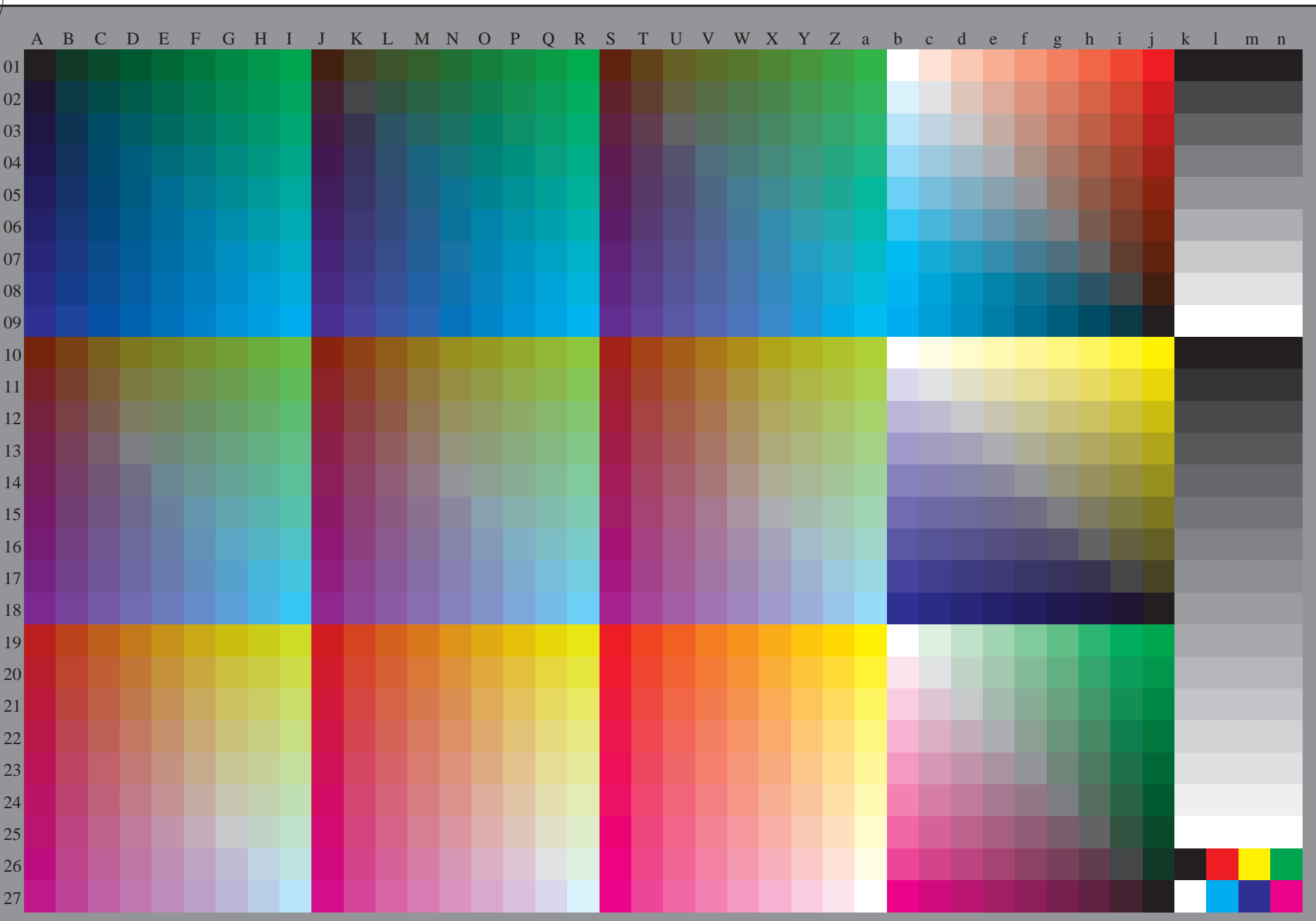
entrada: *rgb/cmyk* -> *rgb/cmyk*
salida: ningún cambio





vea archivos semejantes: <http://130.149.60.45/~farbmetrik/SS19/SS19.HTM>
información técnica: <http://www.ps.bam.de> o <http://130.149.60.45/~farbmetrik>

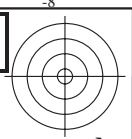
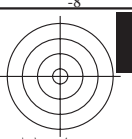
TUB matrícula: 20130201-SS19/SS19L0NA.TXT /.PS
aplicación para la medida salida de impresora láser, separación cmykn6 (CMYK)
TUB material: code=rh4ta



2-003130-L0 SS190-70 rgb (A_n, 3D=0)
gráfico TUB-SS19; 1080 colores estándar
gráfico según a DIN 33872, 3D=0, de=0, cmyk

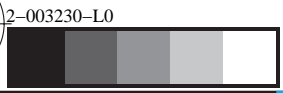
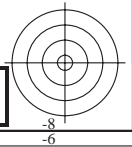
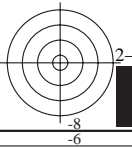
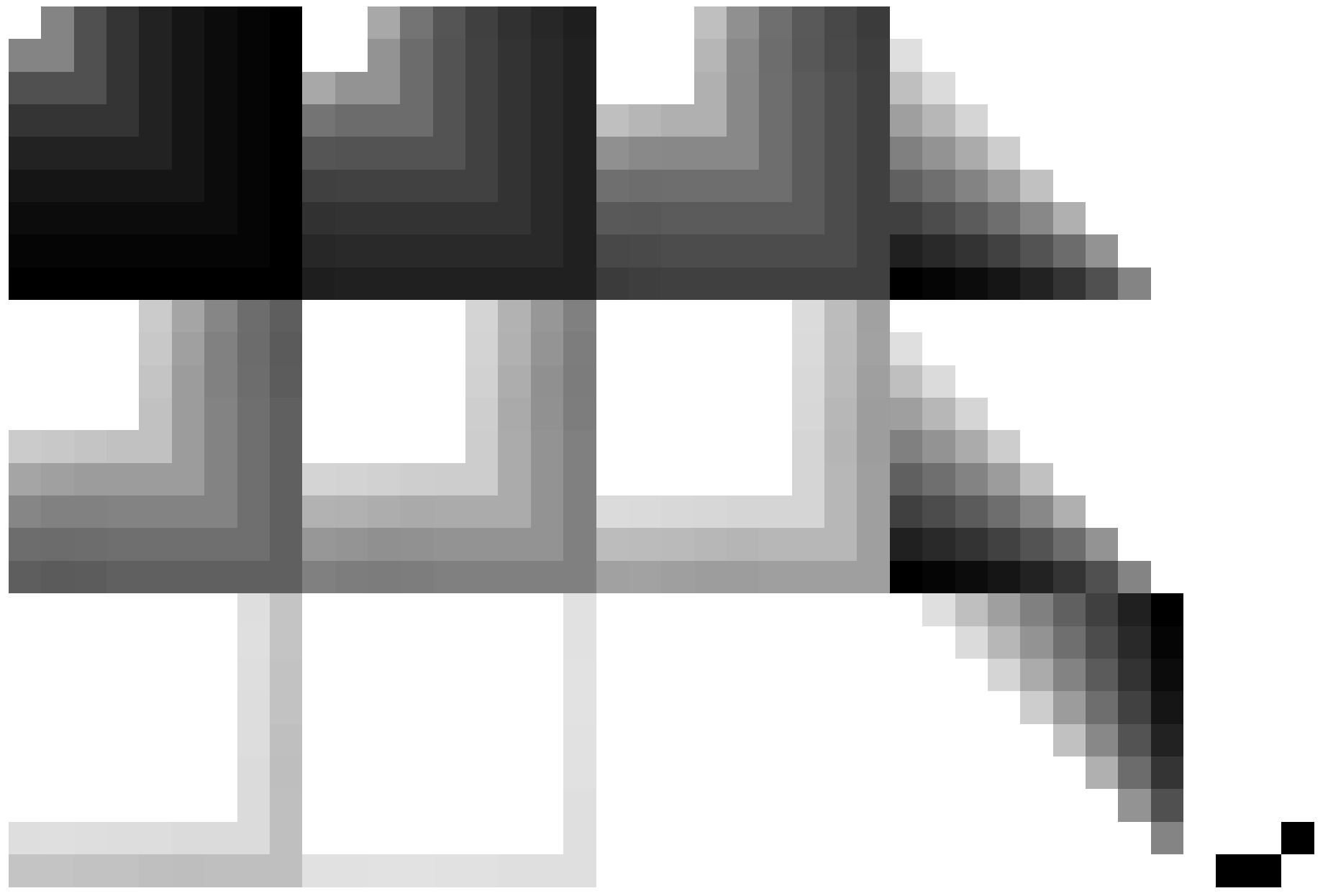
entrada: $rgb/cmyk \rightarrow rgb_d$
salida: transfiera a $cmyk_d$





vea archivos semejantes: <http://130.149.60.45/~farbmetrik/SS19/SS19.HTM>
información técnica: <http://www.ps.bam.de> o <http://130.149.60.45/~farbmetrik>

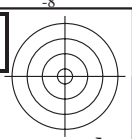
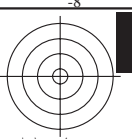
TUB matrícula: 20130201-SS19/SS19L0NA.TXT /.PS TUB material: code=rh4ta
aplicación para la medida salida de impresora láser, separacióncmykn6 (CMYK)



2-003230-L0 SS190-70
gráfico TUB-SS19; 1080 colores estándar
gráfico según a DIN 33872, 3D=0, de=0, cmyk

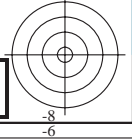
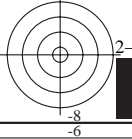
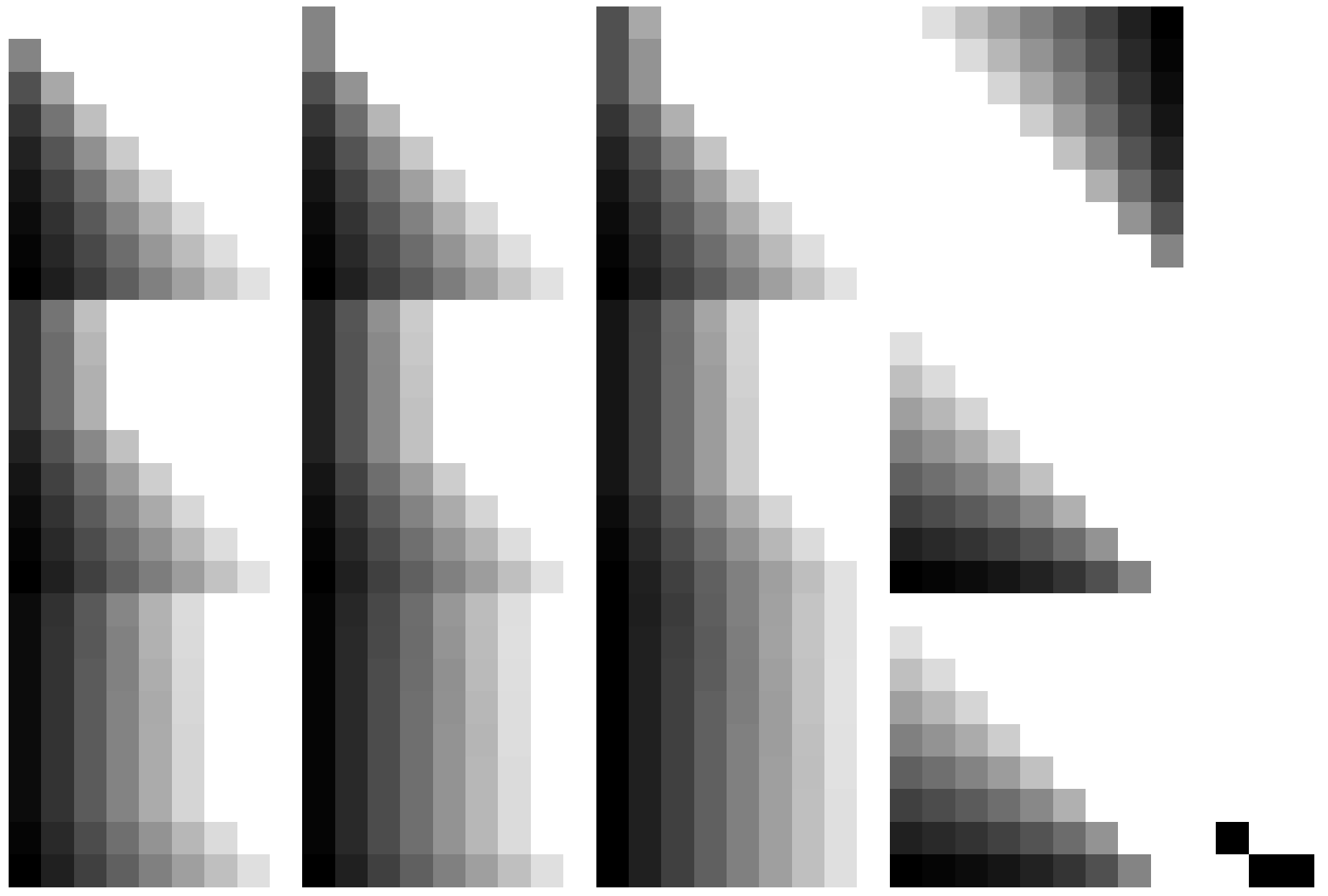
entrada: *rgb/cmyk* -> *rgb_d*
salida: transfiera a *cmyk_d*





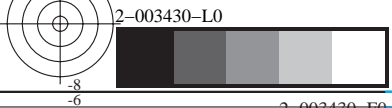
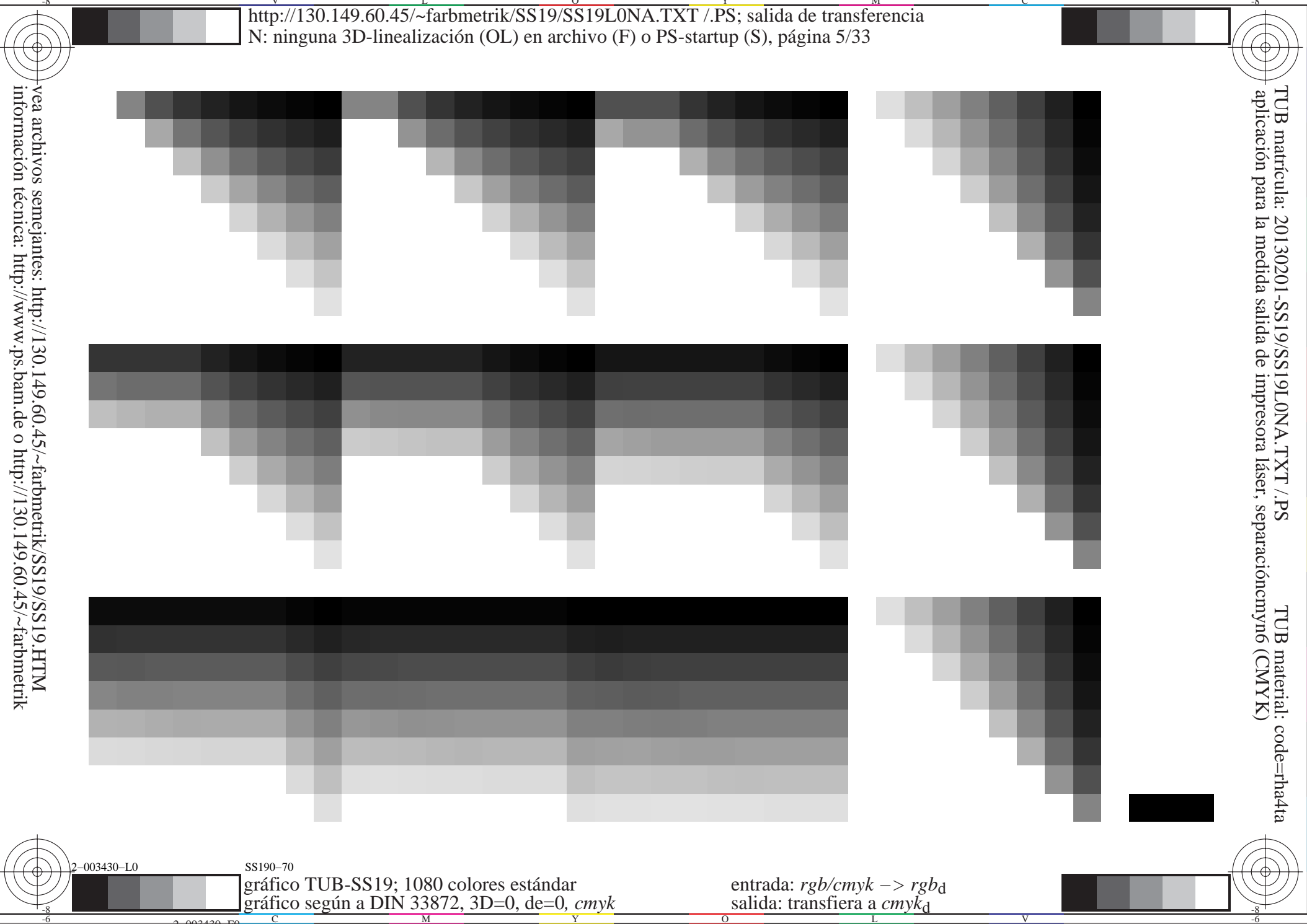
vea archivos semejantes: <http://130.149.60.45/~farbmetrik/SS19/SS19.HTM>
información técnica: <http://www.ps.bam.de> o <http://130.149.60.45/~farbmetrik>

TUB matrícula: 20130201-SS19/SS19L0NA.TXT /.PS TUB material: code=rh4ta
aplicación para la medida salida de impresora láser, separacióncmykn6 (CMYK)



TUB matrícula: 20130201-SS19/SS19L0NA.TXT /.PS TUB material: code=rh4ta
aplicación para la medida salida de impresora láser, separacióncmykn6 (CMYK)

vea archivos semejantes: <http://130.149.60.45/~farbmetrik/SS19/SS19.HTM>
información técnica: <http://www.ps.bam.de> o <http://130.149.60.45/~farbmetrik>



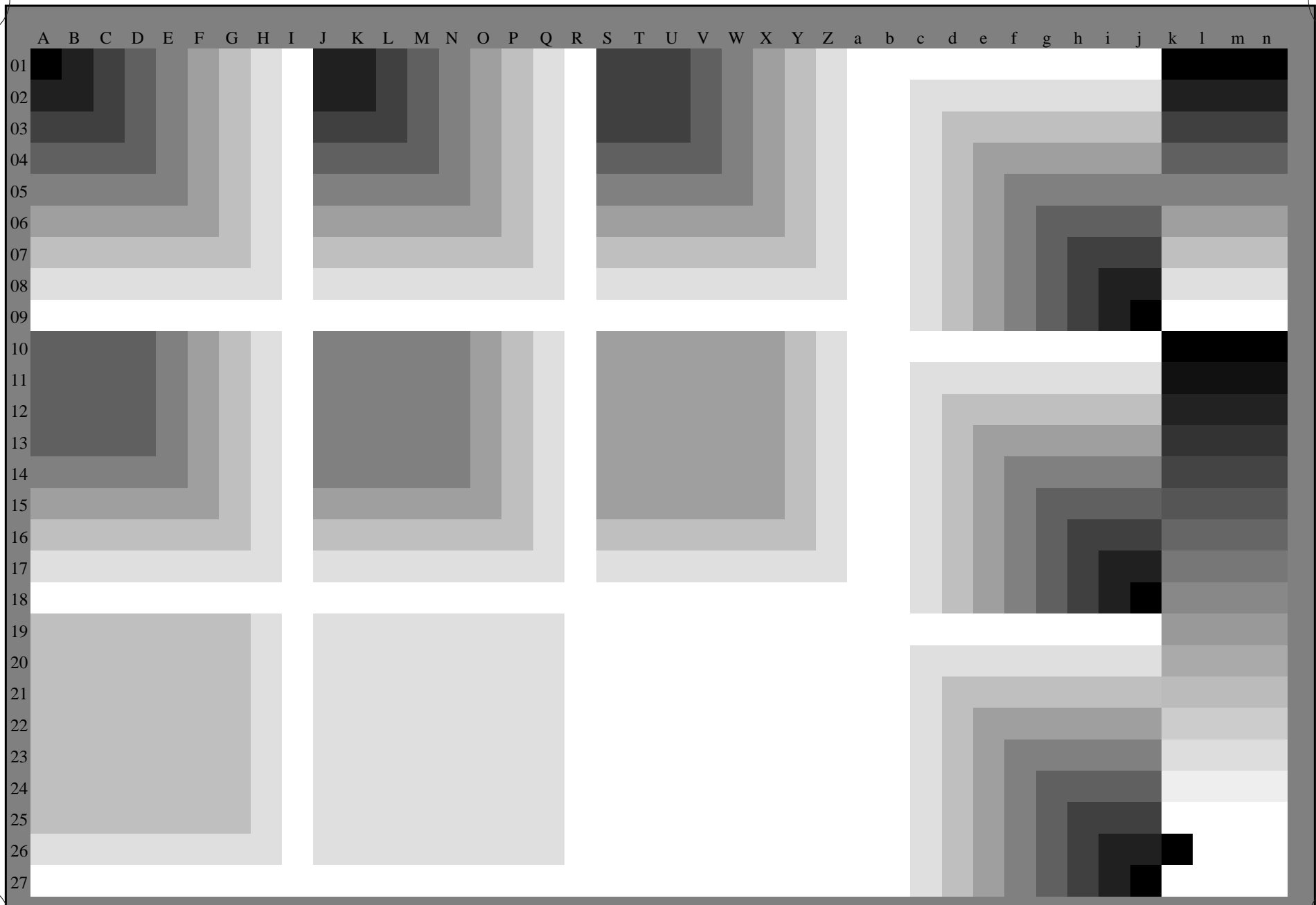
SS190-70
gráfico TUB-SS19; 1080 colores estándar
gráfico según a DIN 33872, 3D=0, de=0, cmyk

entrada: *rgb/cmyk* -> *rgb_d*
salida: transfiera a *cmyk_d*



vea archivos semejantes: <http://130.149.60.45/~farbmetrik/SS19/SS19.HTM>
información técnica: <http://www.ps.bam.de> o <http://130.149.60.45/~farbmetrik>

TUB matrícula: 20130201-SS19/SS19L0NA.TXT /.PS
aplicación para la medida salida de impresora láser, separacióncmykn6 (CMYK)
TUB material: code=rh4ta

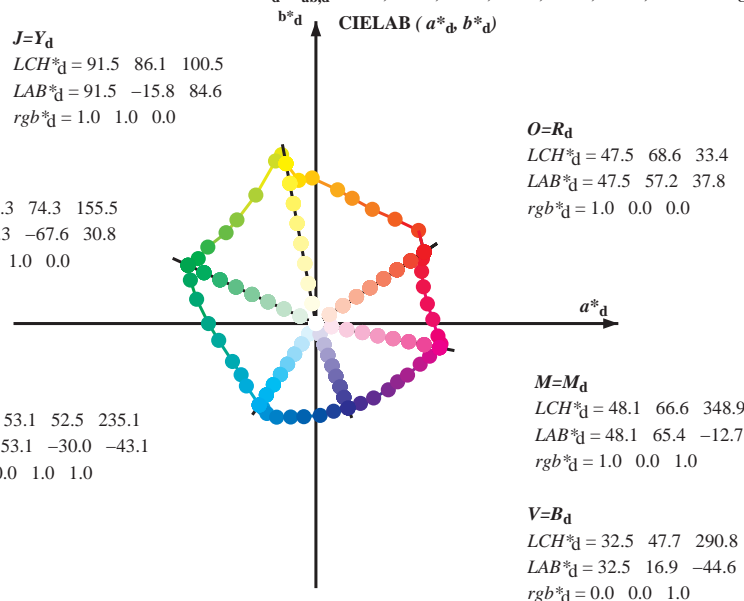


Data of Maximum color M in colorimetric system Laser printer output; separation cmy⁶, D65 for input or output; Six hue angles of the 60 degree standard colours RYGBM_s: $h_{ab,ds} = 30.0, 90.0, 150.0, 210.0, 270.0, 330.0$;
 Six hue angles of the device colours RYGBM_d: $h_{ab,d} = 33.5, 100.6, 155.5, 235.2, 290.8, 348.9$; Six hue angles of the elementary colours RYGBM_e: $h_{ab,e} = 25.5, 92.3, 162.2, 217.0, 271.7, 328.6$

$J=Y_d$
 $LCH^*_d = 91.5 \ 86.1 \ 100.5$
 $LAB^*_d = 91.5 \ -15.8 \ 84.6$
 $rgb^*_d = 1.0 \ 1.0 \ 0.0$

$L=G_d$
 $LCH^*_d = 54.3 \ 74.3 \ 155.5$
 $LAB^*_d = 54.3 \ -67.6 \ 30.8$
 $rgb^*_d = 0.0 \ 1.0 \ 0.0$

$C=C_d$
 $LCH^*_d = 53.1 \ 52.5 \ 235.1$
 $LAB^*_d = 53.1 \ -30.0 \ -43.1$
 $rgb^*_d = 0.0 \ 1.0 \ 1.0$



$O=R_d$
 $LCH^*_d = 47.5 \ 68.6 \ 33.4$
 $LAB^*_d = 47.5 \ 57.2 \ 37.8$
 $rgb^*_d = 1.0 \ 0.0 \ 0.0$

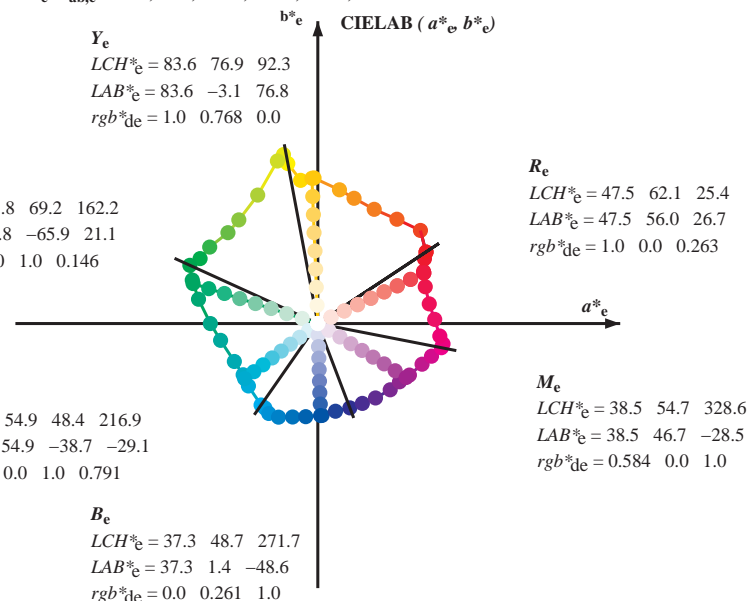
$M=M_d$
 $LCH^*_d = 48.1 \ 66.6 \ 348.9$
 $LAB^*_d = 48.1 \ 65.4 \ -12.7$
 $rgb^*_d = 1.0 \ 0.0 \ 1.0$

$V=B_d$
 $LCH^*_d = 32.5 \ 47.7 \ 290.8$
 $LAB^*_d = 32.5 \ 16.9 \ -44.6$
 $rgb^*_d = 0.0 \ 0.0 \ 1.0$

Y_e
 $LCH^*_e = 83.6 \ 76.9 \ 92.3$
 $LAB^*_e = 83.6 \ -3.1 \ 76.8$
 $rgb^*_{de} = 1.0 \ 0.768 \ 0.0$

G_e
 $LCH^*_e = 53.8 \ 69.2 \ 162.2$
 $LAB^*_e = 53.8 \ -65.9 \ 21.1$
 $rgb^*_{de} = 0.0 \ 1.0 \ 0.146$

C_e
 $LCH^*_e = 54.9 \ 48.4 \ 216.9$
 $LAB^*_e = 54.9 \ -38.7 \ -29.1$
 $rgb^*_{de} = 0.0 \ 1.0 \ 0.791$



R_e
 $LCH^*_e = 47.5 \ 62.1 \ 25.4$
 $LAB^*_e = 47.5 \ 56.0 \ 26.7$
 $rgb^*_{de} = 1.0 \ 0.0 \ 0.263$

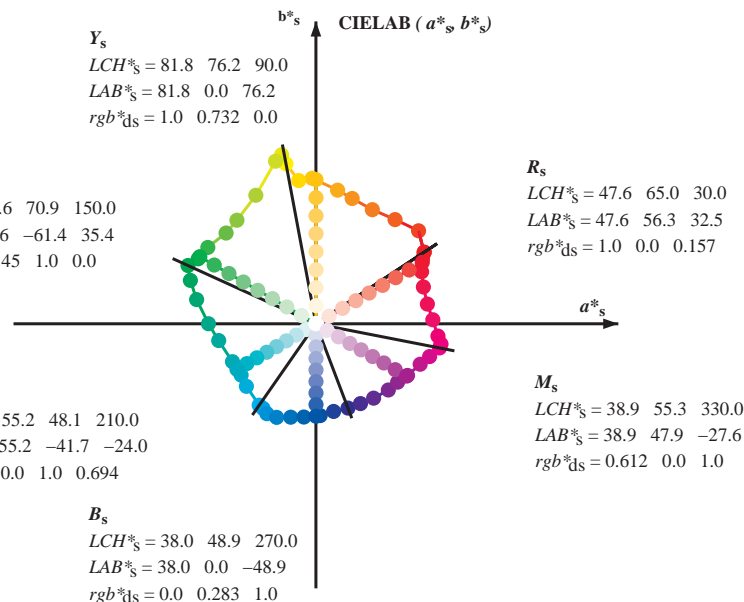
M_e
 $LCH^*_e = 38.5 \ 54.7 \ 328.6$
 $LAB^*_e = 38.5 \ 46.7 \ -28.5$
 $rgb^*_{de} = 0.584 \ 0.0 \ 1.0$

B_e
 $LCH^*_e = 37.3 \ 48.7 \ 271.7$
 $LAB^*_e = 37.3 \ 1.4 \ -48.6$
 $rgb^*_{de} = 0.0 \ 0.261 \ 1.0$

Y_s
 $LCH^*_s = 81.8 \ 76.2 \ 90.0$
 $LAB^*_s = 81.8 \ 0.0 \ 76.2$
 $rgb^*_{ds} = 1.0 \ 0.732 \ 0.0$

G_s
 $LCH^*_s = 57.6 \ 70.9 \ 150.0$
 $LAB^*_s = 57.6 \ -61.4 \ 35.4$
 $rgb^*_{ds} = 0.145 \ 1.0 \ 0.0$

C_s
 $LCH^*_s = 55.2 \ 48.1 \ 210.0$
 $LAB^*_s = 55.2 \ -41.7 \ -24.0$
 $rgb^*_{ds} = 0.0 \ 1.0 \ 0.694$



R_s
 $LCH^*_s = 47.6 \ 65.0 \ 30.0$
 $LAB^*_s = 47.6 \ 56.3 \ 32.5$
 $rgb^*_{ds} = 1.0 \ 0.0 \ 0.157$

M_s
 $LCH^*_s = 38.9 \ 55.3 \ 330.0$
 $LAB^*_s = 38.9 \ 47.9 \ -27.6$
 $rgb^*_{ds} = 0.612 \ 0.0 \ 1.0$

B_s
 $LCH^*_s = 38.0 \ 48.9 \ 270.0$
 $LAB^*_s = 38.0 \ 0.0 \ -48.9$
 $rgb^*_{ds} = 0.0 \ 0.283 \ 1.0$

$(a^*_d \ b^*_d), (a^*_s \ b^*_s), (a^*_e \ b^*_e)$
 $rgb^*_d \ LCH^*_d \ LAB^*_d$
 $h_{ab,s} \ rgb^*_s$
 $h_{ab,s} = atan [r^*_d \ cos(30) + g^*_d \ cos(150)] / [r^*_d \ sin(30) + g^*_d \ sin(150) + b^*_d \ sin(270)]$ (1)
 $h_{ab,s}$
 $s: h_{ab,s} = 30.0, 90.0, 150.0, 210.0, 270.0, 330.0, 390.0 \ (i=0,6)$
 $h_{48ab,sij} = h_{ab,si} + j [h_{ab,si+1} - h_{ab,si}] / 8 \ (i = 0, 1, \dots, 5; j = 0, 1, \dots, 7)$ (2)
 $h_{360ab,sij} = h_{ab,si} + j [h_{ab,si+1} - h_{ab,si}] / 60 \ (i = 0, 1, \dots, 5; j = 0, 1, \dots, 59)$ (3)
 $h_{ab,e}$
 $e: h_{ab,e} = 25.5, 92.3, 162.2, 217.0, 271.7, 328.6, 385.5 \ (i=0,6)$
 $h_{48ab,eij} = h_{ab,ei} + j [h_{ab,ei+1} - h_{ab,ei}] / 8 \ (i = 0, 1, \dots, 5; j = 0, 1, \dots, 7)$ (4)
 $h_{360ab,eij} = h_{ab,ei} + j [h_{ab,ei+1} - h_{ab,ei}] / 60 \ (i = 0, 1, \dots, 5; j = 0, 1, \dots, 59)$ (5)
 $h_{ab,e}$
 $h_{ab,d}$
 rgb^*_d

vea archivos semejantes: http://130.149.60.45/~farbmetrik/SS19/SS19.HTM
 información técnica: http://www.ps.bam.de o http://130.149.60.45/~farbmetrik

TUB matrícula: 20130201-SS19/SS19L0NA.TXT /.PS
 aplicación para la medida salida de impresora Láser, separacióncmy⁶ (CMYK)
 TUB material: code=rh4ta

Data of Maximum color M in colorimetric system Laser printer output; separation cmy6*, D65 for input or output; Six hue angles of the 60 degree standard colours RYGBM₆: h_{ab,ds} = 30.0, 90.0, 150.0, 210.0, 270.0, 330.0; Six hue angles of the device colours RYGBM_d: h_{ab,d} = 33.5, 100.6, 155.5, 235.2, 290.8, 348.9; Six hue angles of the elementary colours RYGBM_e: h_{ab,e} = 25.5, 92.3, 162.2, 217.0, 271.7, 328.6

Table with 30 columns: h_{ab,d}, h_{ab,s}, h_{ab,e}, r_{gb}^add64M, LAB*ddx64M (x=LabCh), r_{gb}^addx361M, LAB*ddx361M (x=LabCh), r_{gb}^adsx361M, LAB*dsx361M (x=LabCh), r_{gb}^adex361M, LAB*dex361M, LAB*dex361M, r_{gb}^add, r_{gb}^ads, r_{gb}^ade

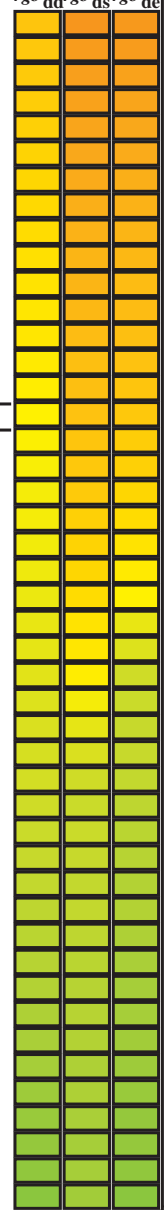
vea archivos semejantes: http://130.149.60.45/~farbmetrik/SS19/SS19.HTM
información técnica: http://www.ps.bam.de o http://130.149.60.45/~farbmetrik

TUB matrícula: 20130201-SS19/SS19L0NA.TXT /.PS
aplicación para la medida salida de impresora Láser, separacióncmy6 (CMYK)
TUB material: code=rh4ta

Data of Maximum color M in colorimetric system Laser printer output; separation cmyn6*, D65 for input or output; Six hue angles of the 60 degree standard colours RYGBM_s; h_{ab,ds} = 30.0, 90.0, 150.0, 210.0, 270.0, 330.0;

Six hue angles of the device colours RYGBM_d; h_{ab,d} = 33.5, 100.6, 155.5, 235.2, 290.8, 348.9; Six hue angles of the elementary colours RYGBM_e; h_{ab,e} = 25.5, 92.3, 162.2, 217.0, 271.7, 328.6

Table with columns for color data: h_ab,d, h_ab,s, h_ab,e, rgbb*, dd361M, LAB*, ddx361Mi (x=LabCh), rgbb*, ds361Mi, LAB*, dsx361Mi (x=LabCh), rgbb*, dd361Mi, LAB*, dex361Mi (x=LabCh), rgbb*, dd361Mi, LAB*, Yd, Ys, Ye, and Yc. It contains 1080 rows of color data.



vea archivos semejantes: http://130.149.60.45/~farbmetrik/SS19/SS19.HTM
información técnica: http://www.ps.bam.de o http://130.149.60.45/~farbmetrik

TUB matrícula: 20130201-SS19/SS19L0NA.TXT /.PS
aplicación para la medida salida de impresora Láser, separacióncmyn6 (CMYK)
TUB material: code=rh4ta

2-0031030-L0

SS190-70

LAB*la0, YN=0%, XYZnw=3.9, 4.1, 4.1, 84.7, 89.6, 93.9, LAB*nw=23.9, 0.0, 0.0, 95.8, 0.0, 0.0

salida: Laser printer output; separation cmyn6*, D65, página 11/33

gráfico TUB-SS19; 1080 colores estándar

entrada: rgb/cmyk -> rgbd

círculo de tono, 48 pasos; rgb-LabCh*mesas, 3D=0, de=0, cmyk

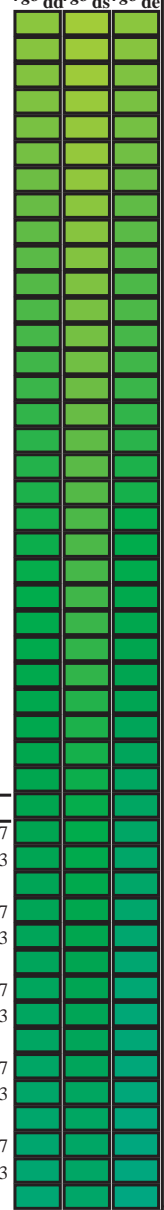
salida: transfiera a cmykD

2-0031030-F0

Data of Maximum color M in colorimetric system Laser printer output; separation cmyn6*, D65 for input or output; Six hue angles of the 60 degree standard colours RYGBM_s: h_{ab,ds} = 30.0, 90.0, 150.0, 210.0, 270.0, 330.0;

Six hue angles of the device colours RYGBM_d: h_{ab,d} = 33.5, 100.6, 155.5, 235.2, 290.8, 348.9; Six hue angles of the elementary colours RYGBM_e: h_{ab,e} = 25.5, 92.3, 162.2, 217.0, 271.7, 328.6

h _{ab,d}	h _{ab,s}	h _{ab,e}	rgb* dd361M	LAB* ddx361Mi (x=LabCh)	rgb* ds361Mi	LAB* dsx361Mi (x=LabCh)	rgb* dd361Mi	LAB* dex361Mi (x=LabCh)	rgb* dd361Mi	LAB* dex361Mi (x=LabCh)	rgb* dd361Mi	LAB* dex361Mi (x=LabCh)	rgb* dd361Mi	LAB* dex361Mi (x=LabCh)	rgb* dd361Mi	LAB* dex361Mi (x=LabCh)	rgb* dd361Mi	LAB* dex361Mi (x=LabCh)
127	120	127	0.5	1.0	0.0	70.9	-41.7	54.8	68.9	127	0.5	1.0	0.0	70.9	-41.7	54.8	68.9	127
128	121	128	0.483	1.0	0.0	70.4	-42.6	53.9	68.7	128	0.483	1.0	0.0	70.4	-42.6	53.9	68.7	128
129	122	129	0.466	1.0	0.0	69.8	-43.4	53.0	68.5	129	0.466	1.0	0.0	69.8	-43.4	53.0	68.5	129
130	123	130	0.45	1.0	0.0	69.2	-44.2	52.1	68.3	130	0.45	1.0	0.0	69.2	-44.2	52.1	68.3	130
131	124	131	0.433	1.0	0.0	68.6	-45.0	51.2	68.2	131	0.433	1.0	0.0	68.6	-45.0	51.2	68.2	131
132	125	132	0.416	1.0	0.0	68.0	-45.7	50.3	68.0	132	0.416	1.0	0.0	68.0	-45.7	50.3	68.0	132
133	126	133	0.4	1.0	0.0	67.4	-46.5	49.4	67.8	133	0.4	1.0	0.0	67.4	-46.5	49.4	67.8	133
134	127	134	0.383	1.0	0.0	66.8	-47.2	48.5	67.7	134	0.383	1.0	0.0	66.8	-47.2	48.5	67.7	134
135	128	135	0.366	1.0	0.0	66.1	-48.2	47.5	67.7	135	0.366	1.0	0.0	66.1	-48.2	47.5	67.7	135
136	129	136	0.35	1.0	0.0	65.4	-49.5	46.6	68.1	136	0.35	1.0	0.0	65.4	-49.5	46.6	68.1	136
138	130	138	0.333	1.0	0.0	64.6	-50.9	45.7	68.4	138	0.333	1.0	0.0	64.6	-50.9	45.7	68.4	138
139	131	140	0.316	1.0	0.0	63.8	-52.2	44.7	68.7	139	0.316	1.0	0.0	63.8	-52.2	44.7	68.7	139
140	132	141	0.3	1.0	0.0	63.0	-53.5	43.7	69.1	140	0.3	1.0	0.0	63.0	-53.5	43.7	69.1	140
142	133	142	0.283	1.0	0.0	62.2	-54.7	42.6	69.4	142	0.283	1.0	0.0	62.2	-54.7	42.6	69.4	142
143	134	143	0.266	1.0	0.0	61.4	-56.0	41.5	69.7	143	0.266	1.0	0.0	61.4	-56.0	41.5	69.7	143
144	135	144	0.25	1.0	0.0	60.6	-57.2	40.4	70.1	144	0.25	1.0	0.0	60.6	-57.2	40.4	70.1	144
145	136	145	0.233	1.0	0.0	60.1	-57.9	39.6	70.2	145	0.233	1.0	0.0	60.1	-57.9	39.6	70.2	145
146	137	147	0.216	1.0	0.0	59.6	-58.6	38.9	70.3	146	0.216	1.0	0.0	59.6	-58.6	38.9	70.3	146
147	138	148	0.2	1.0	0.0	59.1	-59.3	38.1	70.5	147	0.2	1.0	0.0	59.1	-59.3	38.1	70.5	147
148	139	149	0.183	1.0	0.0	58.7	-59.9	37.3	70.6	148	0.183	1.0	0.0	58.7	-59.9	37.3	70.6	148
148	140	150	0.166	1.0	0.0	58.2	-60.6	36.4	70.7	148	0.166	1.0	0.0	58.2	-60.6	36.4	70.7	148
149	141	151	0.15	1.0	0.0	57.7	-61.2	35.6	70.9	149	0.15	1.0	0.0	57.7	-61.2	35.6	70.9	149
150	142	152	0.133	1.0	0.0	57.2	-61.9	34.8	71.0	150	0.133	1.0	0.0	57.2	-61.9	34.8	71.0	150
151	143	154	0.116	1.0	0.0	56.8	-62.5	34.1	71.3	151	0.116	1.0	0.0	56.8	-62.5	34.1	71.3	151
151	144	155	0.1	1.0	0.0	56.4	-63.3	33.7	71.7	151	0.1	1.0	0.0	56.4	-63.3	33.7	71.7	151
152	145	156	0.083	1.0	0.0	56.1	-64.0	33.2	72.1	152	0.083	1.0	0.0	56.1	-64.0	33.2	72.1	152
153	146	157	0.066	1.0	0.0	55.7	-64.7	32.8	72.6	153	0.066	1.0	0.0	55.7	-64.7	32.8	72.6	153
153	147	158	0.049	1.0	0.0	55.4	-65.5	32.3	73.0	153	0.049	1.0	0.0	55.4	-65.5	32.3	73.0	153
154	148	159	0.033	1.0	0.0	55.0	-66.2	31.8	73.5	154	0.033	1.0	0.0	55.0	-66.2	31.8	73.5	154
154	149	161	0.016	1.0	0.0	54.7	-66.9	31.3	73.9	154	0.016	1.0	0.0	54.7	-66.9	31.3	73.9	154
155	150	162	0.0	1.0	0.0	54.3	-67.6	30.8	74.3	155	0.0	1.0	0.0	54.3	-67.6	30.8	74.3	155
156	151	163	0.0	1.0	0.016	54.2	-67.5	29.7	73.8	156	0.0	1.0	0.016	54.2	-67.5	29.7	73.8	156
156	152	164	0.0	1.0	0.033	54.2	-67.4	28.6	73.2	156	0.0	1.0	0.033	54.2	-67.4	28.6	73.2	156
157	153	164	0.0	1.0	0.05	54.1	-67.2	27.6	72.7	157	0.0	1.0	0.05	54.1	-67.2	27.6	72.7	157
158	154	165	0.0	1.0	0.066	54.0	-67.1	26.6	72.1	158	0.0	1.0	0.066	54.0	-67.1	26.6	72.1	158
159	155	166	0.0	1.0	0.083	53.9	-66.9	25.5	71.6	159	0.0	1.0	0.083	53.9	-66.9	25.5	71.6	159
159	156	167	0.0	1.0	0.1	53.9	-66.7	24.5	71.1	159	0.0	1.0	0.1	53.9	-66.7	24.5	71.1	159
160	157	168	0.0	1.0	0.116	53.8	-66.5	23.5	70.5	160	0.0	1.0	0.116	53.8	-66.5	23.5	70.5	160
161	158	169	0.0	1.0	0.133	53.8	-66.2	22.3	69.9	161	0.0	1.0	0.133	53.8	-66.2	22.3	69.9	161
162	159	170	0.0	1.0	0.15	53.8	-65.8	20.8	69.1	162	0.0	1.0	0.15	53.8	-65.8	20.8	69.1	162
163	160	171	0.0	1.0	0.166	53.8	-65.5	19.4	68.3	163	0.0	1.0	0.166	53.8	-65.5	19.4	68.3	163
164	161	172	0.0	1.0	0.183	53.8	-65.0	18.1	67.5	164	0.0	1.0	0.183	53.8	-65.0	18.1	67.5	164
165	162	173	0.0	1.0	0.2	53.8	-64.6	16.7	66.7	165	0.0	1.0	0.2	53.8	-64.6	16.7	66.7	165
166	163	174	0.0	1.0	0.216	53.7	-64.1	15.4	66.0	166	0.0	1.0	0.216	53.7	-64.1	15.4	66.0	166
167	164	175	0.0	1.0	0.233	53.7	-63.6	14.1	65.2	167	0.0	1.0	0.233	53.7	-63.6	14.1	65.2	167
168	165	175	0.0	1.0	0.25	53.7	-63.1	12.8	64.4	168	0.0	1.0	0.25	53.7	-63.1	12.8	64.4	168



vea archivos semejantes: http://130.149.60.45/~farbmetrik/SS19/SS19.HTM
 información técnica: http://www.ps.bam.de o http://130.149.60.45/~farbmetrik

TUB matrícula: 20130201-SS19/SS19L0NA.TXT /.PS
 aplicación para la medida salida de impresora Láser, separacióncmyn6 (CMYK)
 TUB material: code=rh4ta

Data of Maximum color M in colorimetric system Laser printer output; separation cmy⁶*, D65 for input or output; Six hue angles of the 60 degree standard colours RY⁶CB₆M₆: h_{ab,ds} = 30.0, 90.0, 150.0, 210.0, 270.0, 330.0;

Six hue angles of the device colours RY⁶CB₆M₆d: h_{ab,d} = 33.5, 100.6, 155.5, 235.2, 290.8, 348.9; Six hue angles of the elementary colours RY⁶CB₆M₆: h_{ab,e} = 25.5, 92.3, 162.2, 217.0, 271.7, 328.6

Table with 32 columns: h_{ab,d}, h_{ab,s}, h_{ab,e}, r⁶g⁶b⁶*, dd361M, LAB*₆*, ddx361Mi (x=LabCh), r⁶g⁶b⁶*, ds361Mi, LAB*₆*, dsx361Mi (x=LabCh), r⁶g⁶b⁶*, dd361Mi, r⁶g⁶b⁶*, de361Mi, LAB*₆*, dex361Mi (x=LabCh), r⁶g⁶b⁶*, dd361Mi, r⁶g⁶b⁶%, r⁶g⁶b⁶%, r⁶g⁶b⁶%, r⁶g⁶b⁶%. Rows 168-235.

vea archivos semejantes: http://130.149.60.45/~farbmetrik/SS19/SS19.HTM
información técnica: http://www.ps.bam.de o http://130.149.60.45/~farbmetrik

TUB matrícula: 20130201-SS19/SS19L0NA.TXT /.PS
aplicación para la medida salida de impresora Láser, separación cmy⁶ (CMYK)
TUB material: code=rha4ta

Data of Maximum color M in colorimetric system Laser printer output; separation cmyn6*, D65 for input or output; Six hue angles of the 60 degree standard colours RYGBM_s: h_{ab,ds} = 30.0, 90.0, 150.0, 210.0, 270.0, 330.0;

Six hue angles of the device colours RYGBM_d: h_{ab,d} = 33.5, 100.6, 155.5, 235.2, 290.8, 348.9; Six hue angles of the elementary colours RYGBM_e: h_{ab,e} = 25.5, 92.3, 162.2, 217.0, 271.7, 328.6

Table with columns for device colors (h_ab,d, h_ab,s, h_ab,e, rrgb*, dd361M, LAB*, ddx361Mi) and elementary colors (rgb*, de361Mi, LAB*, dex361Mi). It contains 27 rows of color data for 1080 standard colors.

vea archivos semejantes: http://130.149.60.45/~farbmetrik/SS19/SS19.HTM información técnica: http://www.ps.bam.de o http://130.149.60.45/~farbmetrik

TUB matrícula: 20130201-SS19/SS19L0NA.TXT /.PS TUB material: code=rh4ta aplicación para la medida salida de impresora Láser, separacióncmyn6 (CMYK)

Data of Maximum color M in colorimetric system Laser printer output; separation cmyn6*, D65 for input or output; Six hue angles of the 60 degree standard colours RYGBM_s: h_{ab,ds} = 30.0, 90.0, 150.0, 210.0, 270.0, 330.0; Six hue angles of the device colours RYGBCM_d: h_{ab,d} = 33.5, 100.6, 155.5, 235.2, 290.8, 348.9; Six hue angles of the elementary colours RYGBM_e: h_{ab,e} = 25.5, 92.3, 162.2, 217.0, 271.7, 328.6

Table with columns for device colors (h_{ab,d}, h_{ab,s}, h_{ab,e}, r_{gb}^{*}, dd361M), Lab* (LAB*, ddx361Mi (x=LabCh), ds361Mi, dsx361Mi (x=LabCh), LAB*), and elementary colors (r_{gb}^{*}, de361Mi, LAB*, dex361Mi (x=LabCh), r_{gb}^{*}, dd361Mi). Rows 324-354.

vea archivos semejantes: http://130.149.60.45/~farbmetrik/SS19/SS19.HTM información técnica: http://www.ps.bam.de o http://130.149.60.45/~farbmetrik

TUB matrícula: 20130201-SS19/SS19L0NA.TXT /.PS aplicación para la medida salida de impresora Láser, separacióncmyn6 (CMYK) TUB material: code=rha4ta

Table with columns for file names (e.g., R00Y_100_100a), colorimetric data (HIC, rgb, icf, hsi, LabCh, DE, hsiMd, rgbMd, LabChMd), and various numerical values. The table is organized into multiple sections with varying column counts.

delta E* = 2.9

TUB matrícula: 20130201-SS19/SS19L0NA.TXT /.PS aplicación para la medida salida de impresora Láser, separacióncmykn6 (CMYK) TUB material: code=rh4ta

vea archivos semejantes: http://130.149.60.45/~farbmetrik/SS19/SS19.HTM información técnica: http://www.ps.bam.de o http://130.149.60.45/~farbmetrik

Table with 8 columns of color data (HIC, rgb, icf, hsi, LabCh, rgb, LabCh, DE, hsi, rgb, LabCh) and 80 rows of color patches. Includes a 'delta E* = 10.8' label at the bottom right of the table area.

gráfico TUB-SS19; 1080 colores estándar colores y diferencia en color, ΔE*, 3D=0, de=0, cmyk

entrada: rgb/cmyk -> rgb salida: transfiera a cmyk

vea archivos semejantes: http://130.149.60.45/~farbmetrik/SS19/SS19.HTM información técnica: http://www.ps.bam.de o http://130.149.60.45/~farbmetrik

TUB matrícula: 20130201-SS19/SS19L0NA.TXT /.PS aplicación para la medida salida de impresora láser, separacióncmykn6 (CMYK) TUB material: code=rh4ta

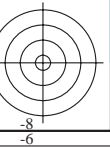
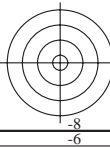


Table with 100 rows and multiple columns containing color calibration data for TUB material. Columns include color names (e.g., R00Y_012_012a), primary color values (HIC*, rgb*, iet*, hsi*), secondary color values (rgb*, LabCh*), and final color values (DE*, hsi, d, rgb*, LabCh*). A delta E* value of 8.5 is noted at the bottom right of the table.

gráfico TUB-SS19; 1080 colores estándar colores y diferencia en color, ΔE*, 3D=0, de=0, cmyk

entrada: rgb/cmyk -> rgb salida: transfiera a cmyk

vea archivos semejantes: http://130.149.60.45/~farbmetrik/SS19/SS19.HTM información técnica: http://www.ps.bam.de o http://130.149.60.45/~farbmetrik

TUB matrícula: 20130201-SS19/SS19L0NA.TXT / PS aplicación para la medida salida de impresora láser, separacióncmykn6 (CMYK) TUB material: code=rh4ta

Table with columns for color channels (HIC*Fa, rgb*Fa, iet*Fa, hsi*Fa, rgb*Fa, LabCh*Fa, DE*Fa, hsiMd, rgb*Md, LabCh*Md) and rows for various color patches (486-566). Includes a 'delta E*' = 6.2 value at the bottom right of the table area.

gráfico TUB-SS19; 1080 colores estándar
colores y diferencia en color, ΔE*, 3D=0, de=0, cmyk

entrada: rgb/cmyk -> rgbd
salida: transfiera a cmykd

vea archivos semejantes: http://130.149.60.45/~farbmetrik/SS19/SS19.HTM
información técnica: http://www.ps.bam.de o http://130.149.60.45/~farbmetrik

TUB matrícula: 20130201-SS19/SS19L0NA.TXT /.PS
aplicación para la medida salida de impresora Láser, separacióncmykn6 (CMYK)

TUB material: code=rh4ta

Table with columns for color names (HIC*Fa, rgb_Fa, icf_Fa, hsi_Fa, rgb*Fa, LabCh*Fa, DE*Fa, hsiMd, rgb*Md, LabCh*Md) and numerical values for each color, ranging from 648 to 728.

gráfico TUB-SS19; 1080 colores estándar colores y diferencia en color, ΔE*, 3D=0, de=0, cmyk

entrada: rgb/cmyk -> rgbΔ salida: transfiera a cmykΔ

vea archivos semejantes: http://130.149.60.45/~farbmetrik/SS19/SS19.HTM información técnica: http://www.ps.bam.de o http://130.149.60.45/~farbmetrik

TUB matrícula: 20130201-SS19/SS19L0NA.TXT /.PS TUB material: code=rh4ta aplicación para la medida salida de impresora laser, separacióncmykn6 (CMYK)

vea archivos semejantes: <http://130.149.60.45/~farbmetrik/SS19/SS19.HTM>
información técnica: <http://www.ps.bam.de> o <http://130.149.60.45/~farbmetrik>

Table with 49 columns (n, HIC*Fa, rgb*Fa, icf*Fa, hsi*Fa, rgb*Fa, LabCh*Fa, rGb*Fa, LabCh*Fa, DE*Fa, hsiMd, rGb*Md, LabCh*Md) and 89 rows of data.

delta E* = 7.8

gráfico TUB-SS19; 1080 colores estándar
colores y diferencia en color, ΔE*, 3D=0, de=0, cmyk

entrada: rgb/cmyk -> rgbd
salida: transfiera a cmykD

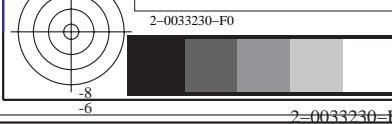
TUB matrícula: 20130201-SS19/SS19L0NA.TXT /.PS
aplicación para la medida salida de impresora láser, separacióncmykn6 (CMYK)
TUB material: code=rh4ta

vea archivos semejantes: <http://130.149.60.45/~farbmetrik/SS19/SS19.HTM>
 información técnica: <http://www.ps.bam.de> o <http://130.149.60.45/~farbmetrik>

TUB matrícula: 20130201-SS19/SS19L0NA.TXT /.PS TUB material: code=rh4ta
 aplicación para la medida salida de impresora láser, separación cmykn6 (CMYK)

n	HIC*Fa	rgb_Fa	icf_Fa	hsi_Fa	rgb*Fa	LabCh*Fa	rgb*Fa	LabCh*Fa	DE*Fa	hsiMd	rgb*Md	LabCh*Md												
1053	NW_086a	0.866	0.866	0.866	0.866	0.0	0.866	0.866	0.866	90.6	0.0	-0.1	0.1	266.5	4.4	360	1.0	1.0	1.0	95.8	0.0	0.0	0.0	0.0
1054	NW_093a	0.933	0.933	0.933	0.933	0.0	0.933	0.933	0.933	94.4	0.0	-0.2	0.2	278.1	3.4	360	1.0	1.0	1.0	95.8	0.0	0.0	0.0	0.0
1055	NW_100a	1.0	1.0	1.0	1.0	0.0	1.0	1.0	1.0	95.8	0.0	0.0	0.0	152.8	0.0	360	1.0	1.0	1.0	95.8	0.0	0.0	0.0	0.0
1056	NW_000a	0.0	0.0	0.0	0.0	0.0	0.0	0.0	0.0	18.1	0.0	0.2	0.2	83.2	5.6	360	1.0	1.0	1.0	95.8	0.0	0.0	0.0	0.0
1057	NW_006a	0.066	0.066	0.066	0.066	0.0	0.066	0.066	0.066	21.5	0.1	0.1	0.2	48.9	7.0	360	1.0	1.0	1.0	95.8	0.0	0.0	0.0	0.0
1058	NW_013a	0.133	0.133	0.133	0.133	0.0	0.133	0.133	0.133	28.9	0.0	-0.7	0.7	268.2	4.4	360	1.0	1.0	1.0	95.8	0.0	0.0	0.0	0.0
1059	NW_020a	0.2	0.2	0.2	0.2	0.0	0.2	0.2	0.2	37.3	0.0	-1.1	1.1	267.2	1.4	360	1.0	1.0	1.0	95.8	0.0	0.0	0.0	0.0
1060	NW_026a	0.266	0.266	0.266	0.266	0.0	0.266	0.266	0.266	44.2	0.0	-1.1	1.1	269.1	1.7	360	1.0	1.0	1.0	95.8	0.0	0.0	0.0	0.0
1061	NW_033a	0.333	0.333	0.333	0.333	0.0	0.333	0.333	0.333	49.9	0.0	-0.8	0.8	274.5	2.3	360	1.0	1.0	1.0	95.8	0.0	0.0	0.0	0.0
1062	NW_040a	0.4	0.4	0.4	0.4	0.0	0.4	0.4	0.4	53.8	0.0	-0.9	0.9	273.2	1.4	360	1.0	1.0	1.0	95.8	0.0	0.0	0.0	0.0
1063	NW_046a	0.466	0.466	0.466	0.466	0.0	0.466	0.466	0.466	59.7	0.0	-1.1	1.1	268.9	2.6	360	1.0	1.0	1.0	95.8	0.0	0.0	0.0	0.0
1064	NW_053a	0.533	0.533	0.533	0.533	0.0	0.533	0.533	0.533	65.4	0.0	-0.9	0.9	273.1	3.3	360	1.0	1.0	1.0	95.8	0.0	0.0	0.0	0.0
1065	NW_060a	0.6	0.6	0.6	0.6	0.0	0.6	0.6	0.6	70.2	0.0	-0.8	0.8	268.8	3.2	360	1.0	1.0	1.0	95.8	0.0	0.0	0.0	0.0
1066	NW_066a	0.666	0.666	0.666	0.666	0.0	0.666	0.666	0.666	75.5	0.0	-0.7	0.7	271.9	3.8	360	1.0	1.0	1.0	95.8	0.0	0.0	0.0	0.0
1067	NW_073a	0.734	0.734	0.734	0.734	0.0	0.734	0.734	0.734	80.8	0.0	-0.4	0.4	265.0	4.1	360	1.0	1.0	1.0	95.8	0.0	0.0	0.0	0.0
1068	NW_080a	0.8	0.8	0.8	0.8	0.0	0.8	0.8	0.8	85.3	0.0	-0.3	0.3	279.5	3.9	360	1.0	1.0	1.0	95.8	0.0	0.0	0.0	0.0
1069	NW_086a	0.866	0.866	0.866	0.866	0.0	0.866	0.866	0.866	90.2	0.0	0.0	0.0	252.2	4.0	360	1.0	1.0	1.0	95.8	0.0	0.0	0.0	0.0
1070	NW_093a	0.933	0.933	0.933	0.933	0.0	0.933	0.933	0.933	94.2	0.0	-0.2	0.2	289.2	3.2	360	1.0	1.0	1.0	95.8	0.0	0.0	0.0	0.0
1071	NW_100a	1.0	1.0	1.0	1.0	0.0	1.0	1.0	1.0	95.8	0.0	0.0	0.1	331.9	0.1	360	1.0	1.0	1.0	95.8	0.0	0.0	0.0	0.0
1072	NW_000a	0.0	0.0	0.0	0.0	0.0	0.0	0.0	0.0	19.2	0.1	0.2	0.2	58.1	4.6	360	1.0	1.0	1.0	95.8	0.0	0.0	0.0	0.0
1073	NW_100a	1.0	1.0	1.0	1.0	0.0	1.0	1.0	1.0	95.7	0.0	-0.2	0.2	284.6	0.2	360	1.0	1.0	1.0	95.8	0.0	0.0	0.0	0.0
1074	R00Y_100_100a	1.0	0.0	0.0	1.0	1.0	1.0	0.0	0.0	47.0	56.3	40.2	69.2	35.5	2.6	389	1.0	0.0	0.0	47.5	57.2	37.8	68.6	33.4
1075	G50B_100_100a	0.0	1.0	1.0	1.0	1.0	0.0	1.0	1.0	54.9	-30.4	-42.0	51.8	234.0	2.1	210	0.0	1.0	1.0	53.1	-30.0	-43.1	52.5	235.1
1076	Y00G_100_100a	1.0	1.0	0.0	1.0	1.0	0.0	1.0	1.0	91.5	-16.0	86.1	87.6	100.5	1.5	89	1.0	1.0	0.0	91.5	-15.8	84.6	86.1	100.5
1077	B00R_100_100a	0.0	0.0	1.0	1.0	1.0	0.0	1.0	1.0	30.7	21.3	-44.1	49.0	295.7	4.7	270	0.0	0.0	1.0	32.5	16.9	-44.6	47.7	290.8
1078	G00B_100_100a	0.0	1.0	0.0	1.0	1.0	0.0	1.0	0.0	54.6	-69.2	33.1	76.7	154.3	2.8	149	0.0	1.0	0.0	54.3	-67.6	30.8	74.3	155.5
1079	B50R_100_100a	1.0	0.0	1.0	1.0	1.0	1.0	0.0	1.0	48.3	66.3	-13.8	67.7	348.1	1.4	330	1.0	0.0	1.0	48.1	65.4	-12.7	66.6	348.9

delta E* = 3.0



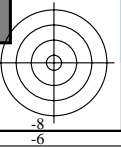
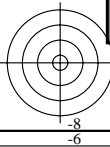
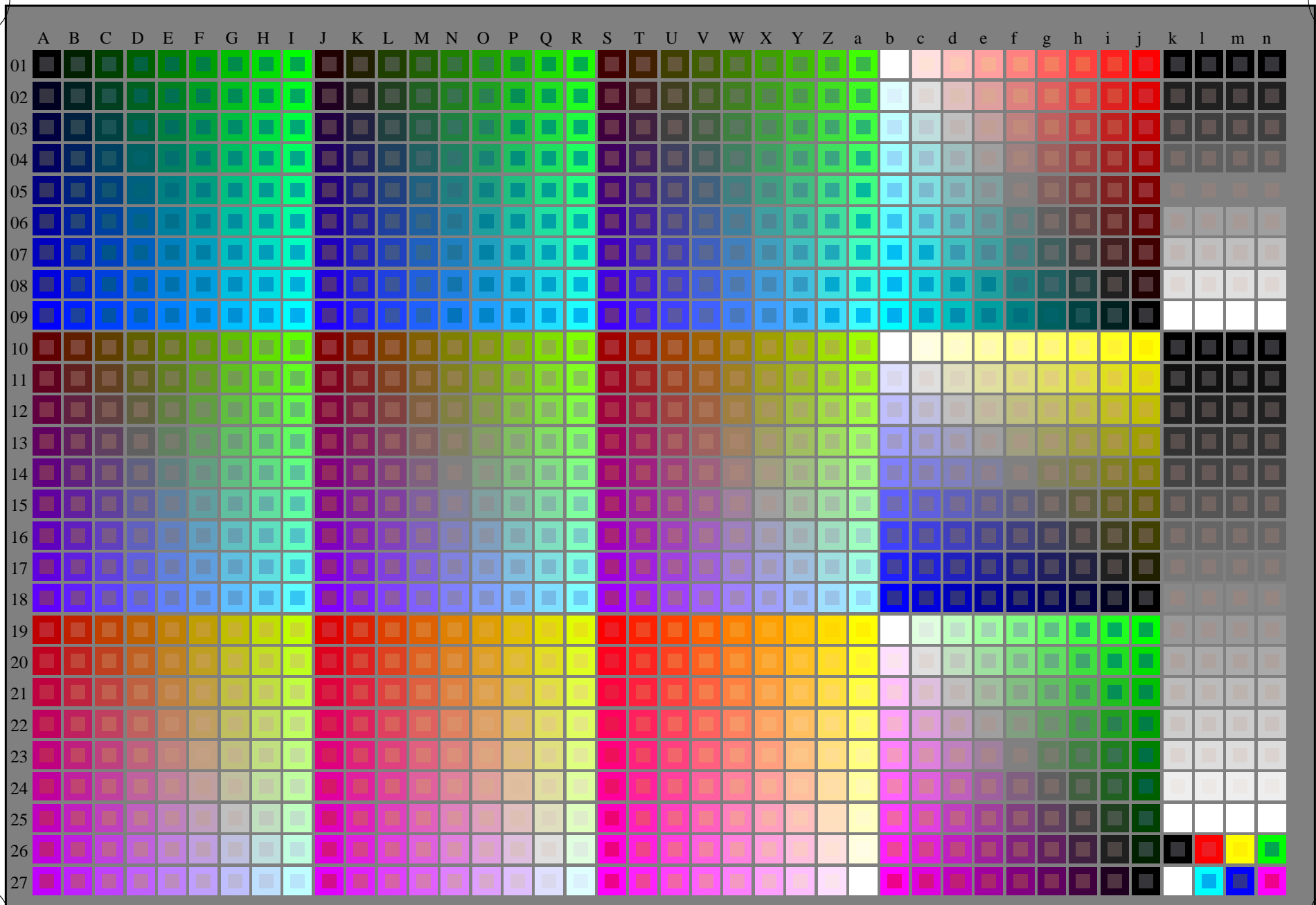
http://130.149.60.45/~farbmetrik/SS19/SS19L0NA.TXT /.PS; comience salida
N: ninguna 3D-linealización (OL) en archivo (F) o PS-startup (S), página 1/33



vea archivos semejantes: <http://130.149.60.45/~farbmetrik/SS19/SS19.HTM>
información técnica: <http://www.ps.bam.de> o <http://130.149.60.45/~farbmetrik>

TUB matrícula: 20130201-SS19/SS19L0NA.TXT /.PS
aplicación para la medida salida de impresora láser

TUB material: code=rh4ta



2-013030-L0 SS190-7N
gráfico TUB-SS19; 1080 colores estándar
gráfico según a DIN 33872

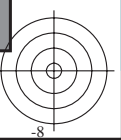
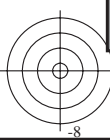
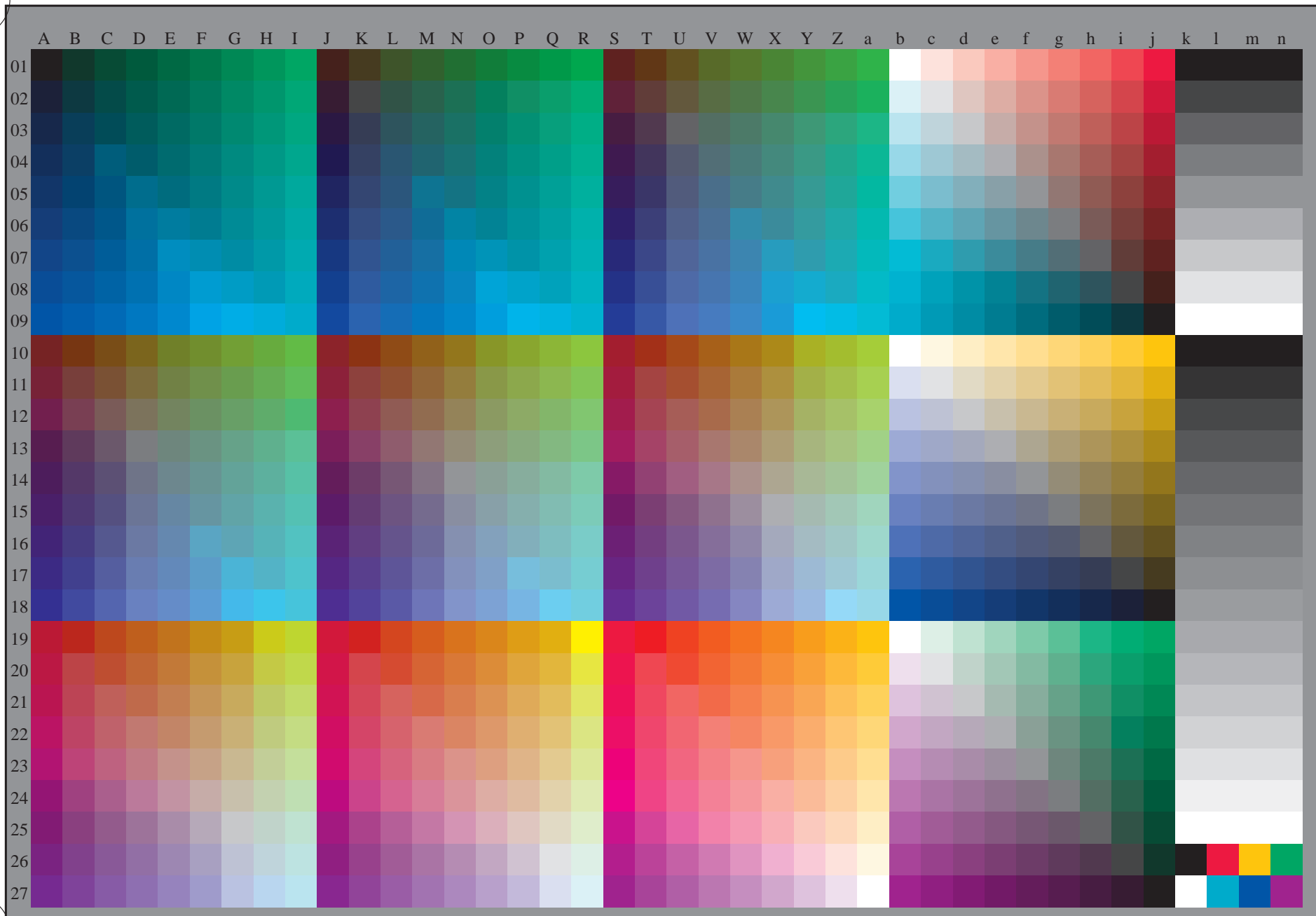
entrada: *rgb/cmyk* -> *rgb/cmyk*
salida: ningún cambio





vea archivos semejantes: <http://130.149.60.45/~farbmetrik/SS19/SS19.HTM>
información técnica: <http://www.ps.bam.de> o <http://130.149.60.45/~farbmetrik>

TUB matrícula: 20130201-SS19/SS19L0NA.TXT /.PS
aplicación para la medida salida de impresora láser, separacióncmykn6 (CMYK)
TUB material: code=rh4ta

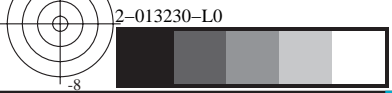
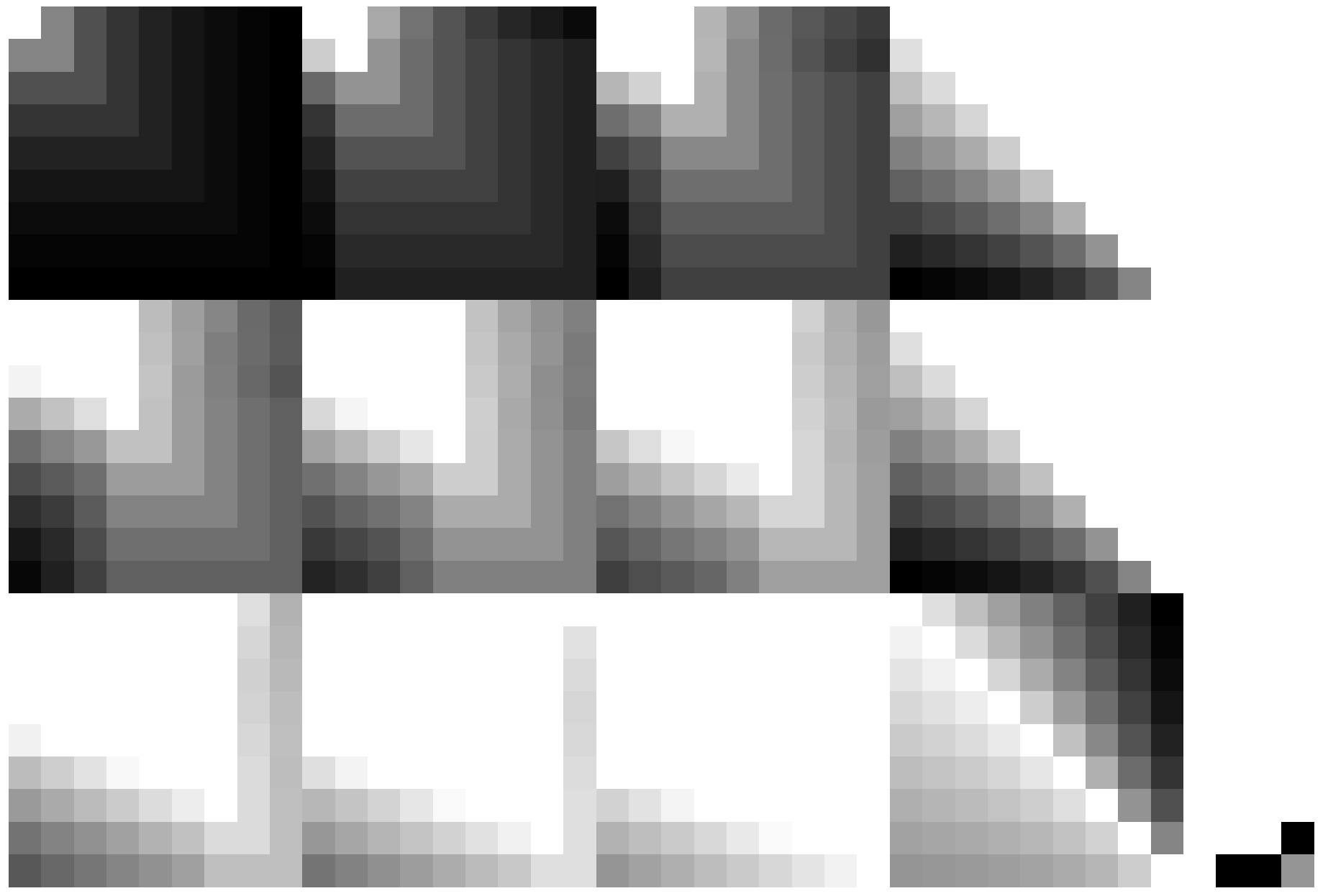


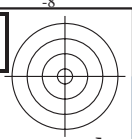
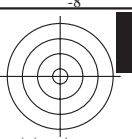
2-013130-L0 SS190-71 rgb (A_n), 3D=0
gráfico TUB-SS19; 1080 colores estándar
gráfico según a DIN 33872, 3D=0, de=1, cmyk

entrada: *rgb/cmyk* -> *rgb_e*
salida: transfiera a *cmyk_e*

vea archivos semejantes: <http://130.149.60.45/~farbmetrik/SS19/SS19.HTM>
información técnica: <http://www.ps.bam.de> o <http://130.149.60.45/~farbmetrik>

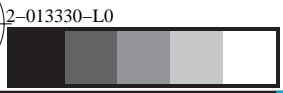
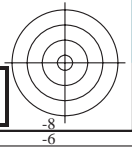
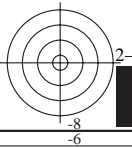
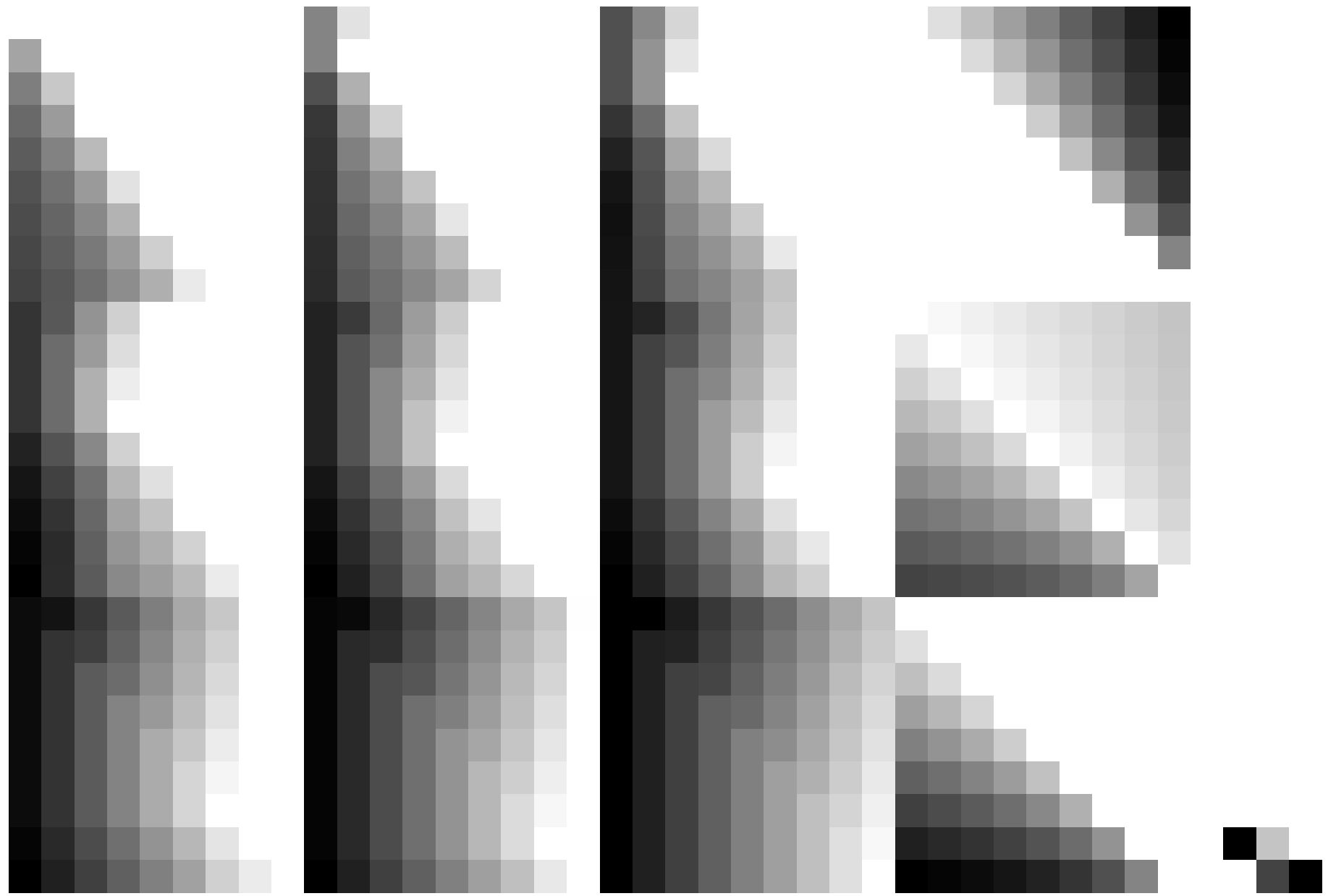
TUB matrícula: 20130201-SS19/SS19L0NA.TXT /.PS TUB material: code=rh4ta
aplicación para la medida salida de impresora láser, separacióncmykn6 (CMYK)





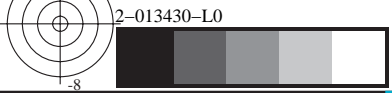
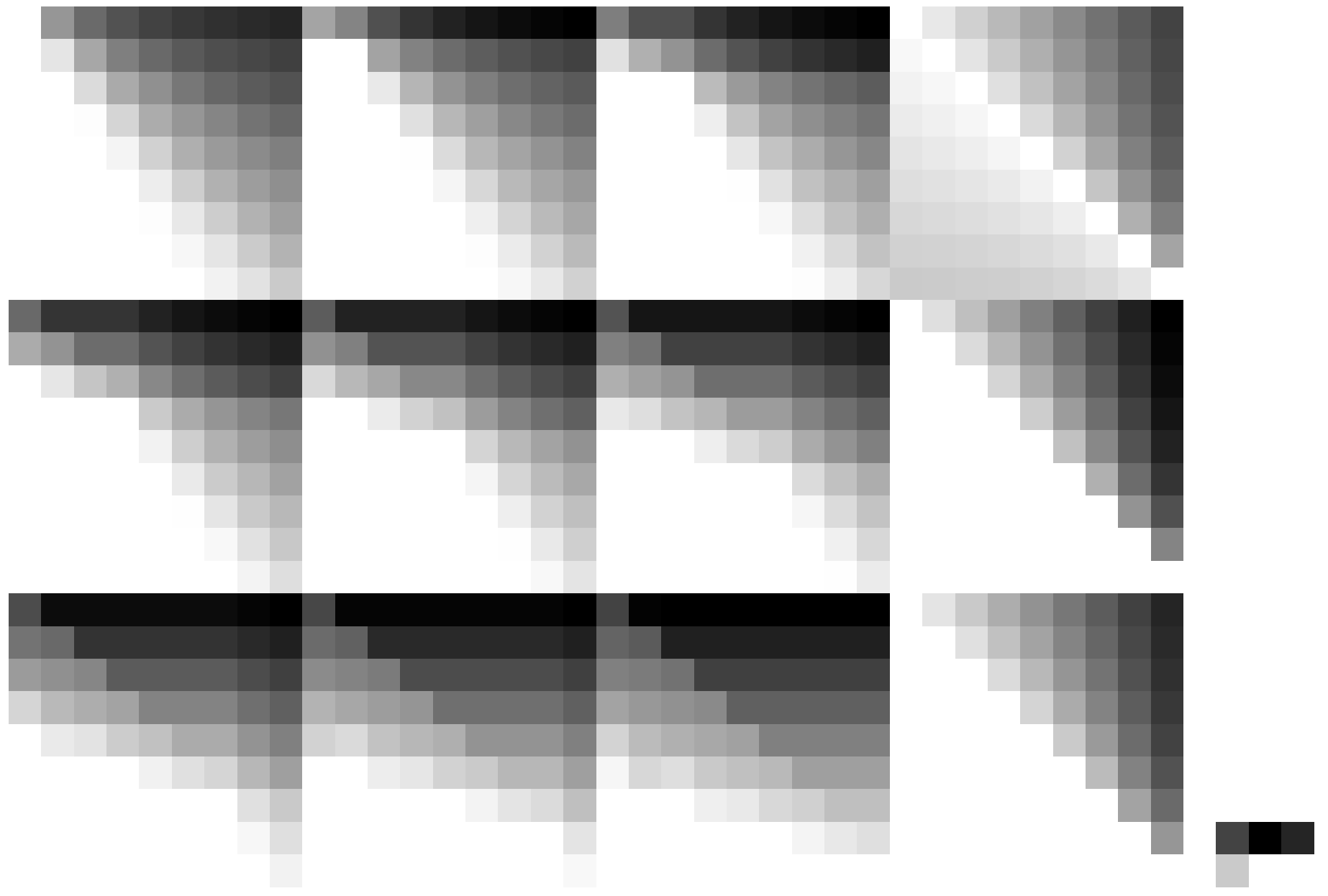
vea archivos semejantes: <http://130.149.60.45/~farbmetrik/SS19/SS19.HTM>
información técnica: <http://www.ps.bam.de> o <http://130.149.60.45/~farbmetrik>

TUB matrícula: 20130201-SS19/SS19L0NA.TXT /.PS TUB material: code=rh4ta
aplicación para la medida salida de impresora láser, separacióncmykn6 (CMYK)



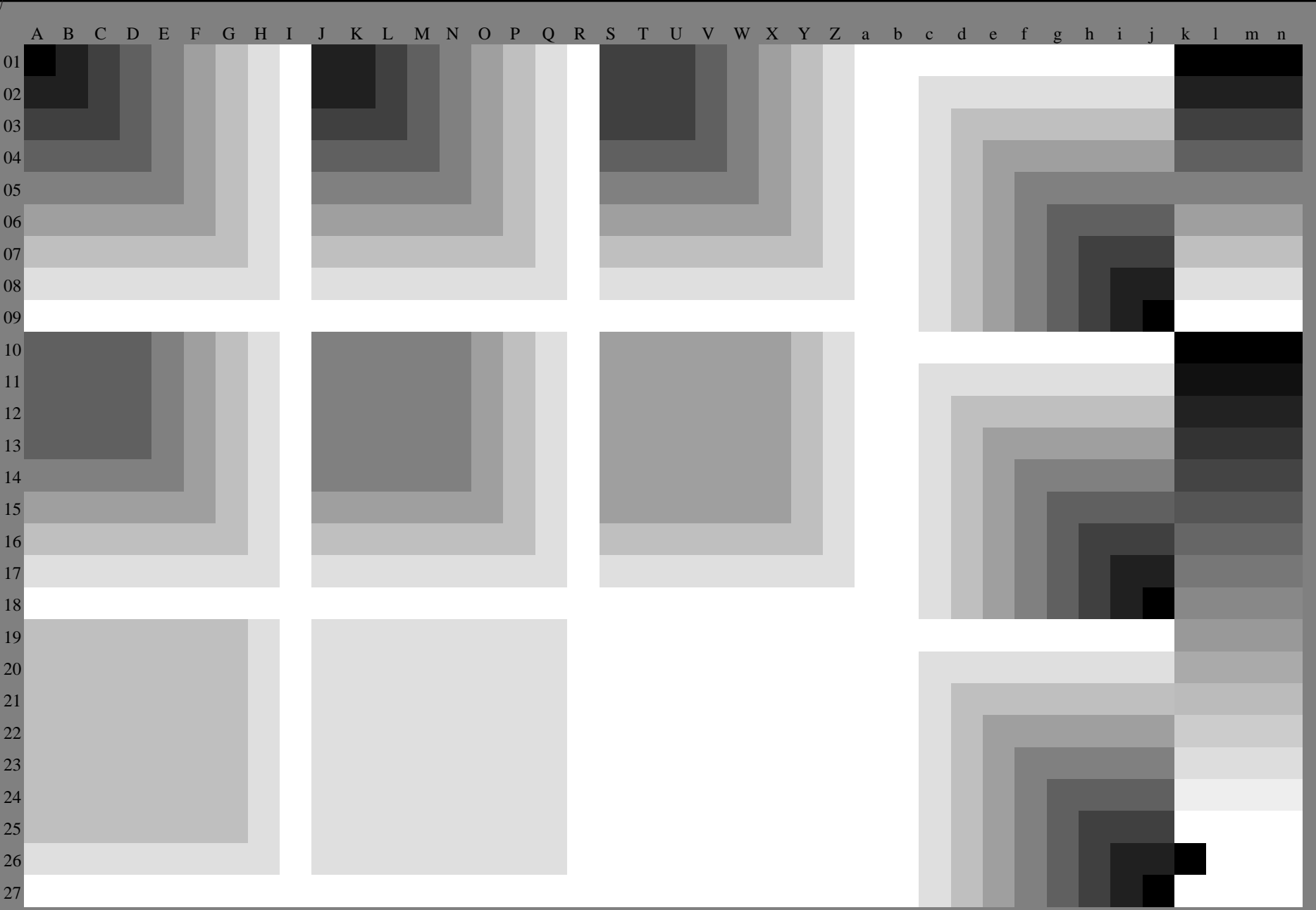
2-013330-L0 SS190-71
gráfico TUB-SS19; 1080 colores estándar
gráfico según a DIN 33872, 3D=0, de=1, *cmyk*

entrada: *rgb/cmyk* -> *rgb_e*
salida: transfiera a *cmyk_e*



vea archivos semejantes: <http://130.149.60.45/~farbmetrik/SS19/SS19.HTM>
información técnica: <http://www.ps.bam.de> o <http://130.149.60.45/~farbmetrik>

TUB matrícula: 20130201-SS19/SS19L0NA.TXT /.PS
aplicación para la medida salida de impresora láser, separacióncmykn6 (CMYK)
TUB material: code=rh4ta



SS190-71
gráfico TUB-SS19; 1080 colores estándar
gráfico según a DIN 33872, 3D=0, de=1, cmyk

entrada: *rgb/cmyk* -> *rgb_e*
salida: transfiera a *cmyk_e*

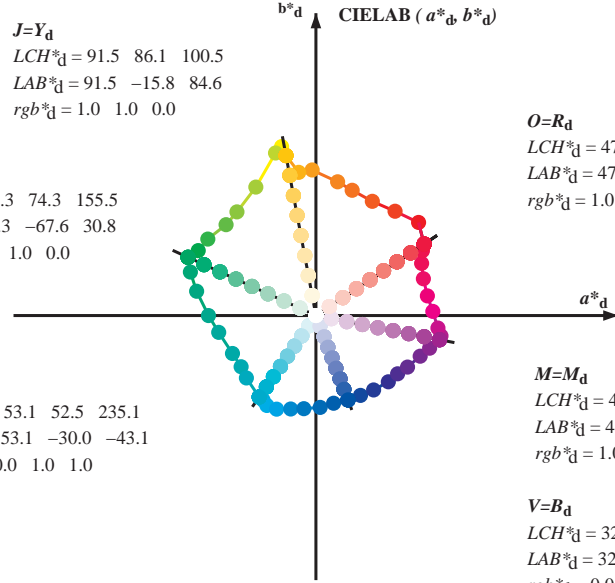


Data of Maximum color M in colorimetric system Laser printer output; separation cmy₆*, D65 for input or output; Six hue angles of the 60 degree standard colours RYGBM_s: $h_{ab,ds} = 30.0, 90.0, 150.0, 210.0, 270.0, 330.0$;
 Six hue angles of the device colours RYGBM_d: $h_{ab,d} = 33.5, 100.6, 155.5, 235.2, 290.8, 348.9$; Six hue angles of the elementary colours RYGBM_e: $h_{ab,e} = 25.5, 92.3, 162.2, 217.0, 271.7, 328.6$

$J=Y_d$
 $LCH^*_d = 91.5 \ 86.1 \ 100.5$
 $LAB^*_d = 91.5 \ -15.8 \ 84.6$
 $rgb^*_d = 1.0 \ 1.0 \ 0.0$

$L=G_d$
 $LCH^*_d = 54.3 \ 74.3 \ 155.5$
 $LAB^*_d = 54.3 \ -67.6 \ 30.8$
 $rgb^*_d = 0.0 \ 1.0 \ 0.0$

$C=C_d$
 $LCH^*_d = 53.1 \ 52.5 \ 235.1$
 $LAB^*_d = 53.1 \ -30.0 \ -43.1$
 $rgb^*_d = 0.0 \ 1.0 \ 1.0$



$O=R_d$
 $LCH^*_d = 47.5 \ 68.6 \ 33.4$
 $LAB^*_d = 47.5 \ 57.2 \ 37.8$
 $rgb^*_d = 1.0 \ 0.0 \ 0.0$

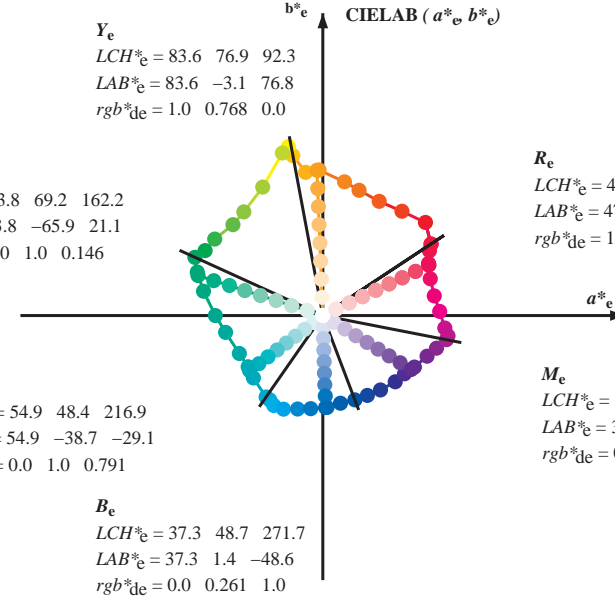
$M=M_d$
 $LCH^*_d = 48.1 \ 66.6 \ 348.9$
 $LAB^*_d = 48.1 \ 65.4 \ -12.7$
 $rgb^*_d = 1.0 \ 0.0 \ 1.0$

$V=B_d$
 $LCH^*_d = 32.5 \ 47.7 \ 290.8$
 $LAB^*_d = 32.5 \ 16.9 \ -44.6$
 $rgb^*_d = 0.0 \ 0.0 \ 1.0$

Y_e
 $LCH^*_e = 83.6 \ 76.9 \ 92.3$
 $LAB^*_e = 83.6 \ -3.1 \ 76.8$
 $rgb^*_{de} = 1.0 \ 0.768 \ 0.0$

G_e
 $LCH^*_e = 53.8 \ 69.2 \ 162.2$
 $LAB^*_e = 53.8 \ -65.9 \ 21.1$
 $rgb^*_{de} = 0.0 \ 1.0 \ 0.146$

C_e
 $LCH^*_e = 54.9 \ 48.4 \ 216.9$
 $LAB^*_e = 54.9 \ -38.7 \ -29.1$
 $rgb^*_{de} = 0.0 \ 1.0 \ 0.791$



R_e
 $LCH^*_e = 47.5 \ 62.1 \ 25.4$
 $LAB^*_e = 47.5 \ 56.0 \ 26.7$
 $rgb^*_{de} = 1.0 \ 0.0 \ 0.263$

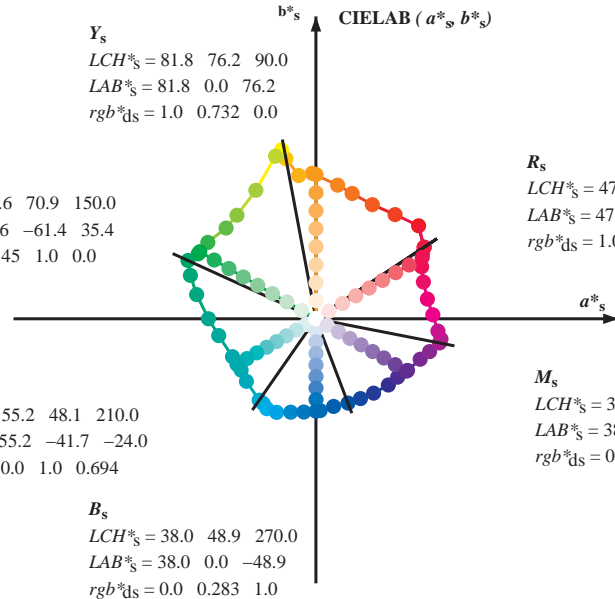
M_e
 $LCH^*_e = 38.5 \ 54.7 \ 328.6$
 $LAB^*_e = 38.5 \ 46.7 \ -28.5$
 $rgb^*_{de} = 0.584 \ 0.0 \ 1.0$

B_e
 $LCH^*_e = 37.3 \ 48.7 \ 271.7$
 $LAB^*_e = 37.3 \ 1.4 \ -48.6$
 $rgb^*_{de} = 0.0 \ 0.261 \ 1.0$

Y_s
 $LCH^*_s = 81.8 \ 76.2 \ 90.0$
 $LAB^*_s = 81.8 \ 0.0 \ 76.2$
 $rgb^*_{ds} = 1.0 \ 0.732 \ 0.0$

G_s
 $LCH^*_s = 57.6 \ 70.9 \ 150.0$
 $LAB^*_s = 57.6 \ -61.4 \ 35.4$
 $rgb^*_{ds} = 0.145 \ 1.0 \ 0.0$

C_s
 $LCH^*_s = 55.2 \ 48.1 \ 210.0$
 $LAB^*_s = 55.2 \ -41.7 \ -24.0$
 $rgb^*_{ds} = 0.0 \ 1.0 \ 0.694$



R_s
 $LCH^*_s = 47.6 \ 65.0 \ 30.0$
 $LAB^*_s = 47.6 \ 56.3 \ 32.5$
 $rgb^*_{ds} = 1.0 \ 0.0 \ 0.157$

M_s
 $LCH^*_s = 38.9 \ 55.3 \ 330.0$
 $LAB^*_s = 38.9 \ 47.9 \ -27.6$
 $rgb^*_{ds} = 0.612 \ 0.0 \ 1.0$

B_s
 $LCH^*_s = 38.0 \ 48.9 \ 270.0$
 $LAB^*_s = 38.0 \ 0.0 \ -48.9$
 $rgb^*_{ds} = 0.0 \ 0.283 \ 1.0$

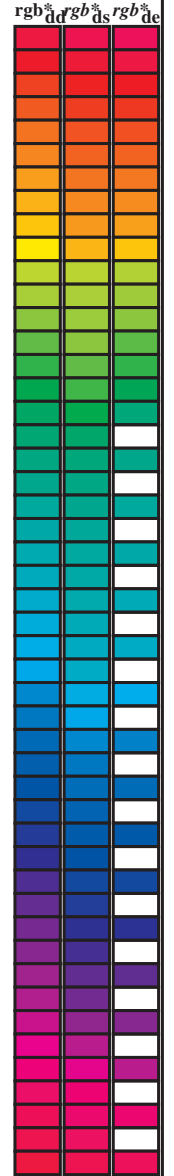
$(a^*_d, b^*_d), (a^*_s, b^*_s), (a^*_e, b^*_e)$
 $rgb^*_e LCH^*_s, LAB^*_s$
 $h_{ab,s} = atan [r^*_d cos(30) + g^*_d cos(150)] / [r^*_d sin(30) + g^*_d sin(150) + b^*_d sin(270)]$ (1)
 $h_{ab,s}$
 $s: h_{ab,s} = 30.0, 90.0, 150.0, 210.0, 270.0, 330.0, 390.0 (i=0,6)$
 $h_{48ab,sij} = h_{ab,si} + j [h_{ab,si+1} - h_{ab,si}] / 8 (i = 0, 1, \dots, 5; j = 0, 1, \dots, 7)$ (2)
 $h_{360ab,sij} = h_{ab,si} + j [h_{ab,si+1} - h_{ab,si}] / 60 (i = 0, 1, \dots, 5; j = 0, 1, \dots, 59)$ (3)
 $h_{ab,e}$
 $e: h_{ab,e} = 25.5, 92.3, 162.2, 217.0, 271.7, 328.6, 385.5 (i=0,6)$
 $h_{48ab,eij} = h_{ab,ei} + j [h_{ab,ei+1} - h_{ab,ei}] / 8 (i = 0, 1, \dots, 5; j = 0, 1, \dots, 7)$ (4)
 $h_{360ab,eij} = h_{ab,ei} + j [h_{ab,ei+1} - h_{ab,ei}] / 60 (i = 0, 1, \dots, 5; j = 0, 1, \dots, 59)$ (5)
 $h_{ab,d}$
 rgb^*_{de}

vea archivos semejantes: http://130.149.60.45/~farbmetrik/SS19/SS19.HTM
 información técnica: http://www.ps.bam.de o http://130.149.60.45/~farbmetrik

TUB matrícula: 20130201-SS19/SS19L0NA.TXT /.PS
 aplicación para la medida salida de impresora Láser, separacióncmy₆ (CMYK)
 TUB material: code=rh4ta

Data of Maximum color M in colorimetric system Laser printer output; separation cmyn6*, D65 for input or output; Six hue angles of the 60 degree standard colours RYGBM_c: h_{ab,ds} = 30.0, 90.0, 150.0, 210.0, 270.0, 330.0;
 Six hue angles of the device colours RYGBM_d: h_{ab,d} = 33.5, 100.6, 155.5, 235.2, 290.8, 348.9; Six hue angles of the elementary colours RYGBM_e: h_{ab,e} = 25.5, 92.3, 162.2, 217.0, 271.7, 328.6

h _{ab,d}	h _{ab,s}	h _{ab,e}	rgb* dd64M	LAB* ddx64M (x=LabCh)	rgb* dex361M	LAB* dex361M
33.4	30.0	25.4	1.0 0.0 0.0	47.5 57.2 37.8 68.6 33.4	1.0 0.0 0.263 47.6	56.1 26.7 62.1 25
42.1	37.5	33.8	1.0 0.125 0.0	51.9 54.3 49.2 73.2 42.1	1.0 0.0 0.012 47.6	57.2 37.5 68.4 33
52.8	45.0	42.1	1.0 0.25 0.0	58.2 41.8 55.1 69.2 52.8	1.0 0.125 0.0	52.0 54.3 49.2 73.3 42
63.7	52.5	50.5	1.0 0.375 0.0	64.6 29.8 60.4 67.3 63.7	1.0 0.216 0.0	56.6 45.2 53.9 70.3 49
73.8	60.0	58.8	1.0 0.5 0.0	70.5 19.2 66.2 69.0 73.8	1.0 0.32 0.0	61.8 35.2 58.4 68.2 58
80.7	67.5	67.2	1.0 0.625 0.0	74.9 11.4 70.7 71.6 80.7	1.0 0.412 0.0	66.4 26.9 62.3 67.9 66
91.5	75.0	75.6	1.0 0.75 0.0	82.9 -2.0 76.9 77.0 91.5	1.0 0.532 0.0	71.6 17.3 67.5 69.7 75
96.8	82.5	83.9	1.0 0.875 0.0	87.6 -9.0 75.7 76.3 96.8	1.0 0.655 0.0	76.9 8.4 72.5 73.0 83
100.5	90.0	92.3	1.0 1.0 0.0	91.5 -15.8 84.6 86.1 100.5	1.0 0.769 0.0	83.7 -3.0 76.8 76.9 92
101.4	97.5	101.0	0.875 1.0 0.0	92.8 -18.1 89.4 91.2 101.4	1.0 0.996 0.0	91.5 -15.5 84.4 85.8 100
103.9	105.0	109.7	0.75 1.0 0.0	90.1 -21.3 86.0 88.6 103.9	0.684 1.0 0.0	84.7 -27.5 76.7 81.5 109
115.0	112.5	118.5	0.625 1.0 0.0	79.9 -31.7 67.9 75.0 115.0	0.595 1.0 0.0	77.8 -34.4 65.0 73.6 117
127.3	120.0	127.2	0.5 1.0 0.0	70.9 -41.7 54.8 68.9 127.3	0.501 1.0 0.0	71.0 -41.6 54.9 68.9 127
134.7	127.5	136.0	0.375 1.0 0.0	66.5 -47.5 48.0 67.6 134.7	0.366 1.0 0.0	66.2 -48.2 47.6 67.8 135
144.7	135.0	144.7	0.25 1.0 0.0	60.6 -57.2 40.4 70.1 144.7	0.25 1.0 0.0	60.6 -57.1 40.5 70.1 144
151.0	142.5	153.4	0.125 1.0 0.0	57.0 -62.2 34.4 71.1 151.0	0.073 1.0 0.0	55.9 -64.4 33.0 72.5 152
155.5	150.0	162.2	0.0 1.0 0.0	54.3 -67.6 30.8 74.3 155.5	0.0 1.0 0.147 53.8	-65.9 21.1 69.3 162
160.8	157.5	169.0	0.0 1.0 0.125 53.8	-66.4 23.0 70.2 160.8	0.0 1.0 0.251 53.8	-63.0 12.7 64.4 168
168.5	165.0	175.9	0.0 1.0 0.25 53.7	-63.1 12.8 64.4 168.5	0.0 1.0 0.331 54.4	-59.3 4.2 59.5 175
179.9	172.5	182.7	0.0 1.0 0.375 54.7	-56.8 0.0 56.8 179.9	0.0 1.0 0.405 54.8	-55.6 -2.1 55.7 182
189.8	180.0	189.6	0.0 1.0 0.5 55.0	-51.4 -8.9 52.2 189.8	0.0 1.0 0.497 55.0	-51.5 -8.6 52.3 189
204.4	187.5	196.4	0.0 1.0 0.625 55.3	-44.1 -20.0 48.5 204.4	0.0 1.0 0.553 55.2	-48.6 -13.9 50.7 195
214.4	195.0	203.2	0.0 1.0 0.75 55.2	-39.5 -27.1 47.9 214.4	0.0 1.0 0.615 55.3	-44.7 -19.2 48.8 203
221.9	202.5	210.1	0.0 1.0 0.875 54.4	-36.7 -33.0 49.4 221.9	0.0 1.0 0.69 55.3	-41.8 -23.8 48.2 209
235.1	210.0	216.9	0.0 1.0 1.0 53.1	-30.0 -43.1 52.5 235.1	0.0 1.0 0.792 55.0	-38.6 -29.0 48.4 216
237.9	217.5	223.8	0.0 0.875 1.0 53.1	-27.9 -44.7 52.7 237.9	0.0 1.0 0.888 54.3	-36.1 -34.1 49.8 223
241.3	225.0	230.6	0.0 0.75 1.0 52.9	-25.9 -47.5 54.1 241.3	0.0 1.0 0.957 53.6	-32.5 -39.7 51.5 230
247.2	232.5	237.5	0.0 0.625 1.0 50.5	-20.8 -49.5 53.7 247.2	0.0 0.916 1.0 53.1	-28.6 -44.1 52.7 237
254.9	240.0	244.3	0.0 0.5 1.0 46.1	-13.3 -49.4 51.1 254.9	0.0 0.686 1.0 51.7	-23.3 -48.5 54.0 244
262.6	247.5	251.2	0.0 0.375 1.0 41.4	-6.3 -49.2 49.6 262.6	0.0 0.568 1.0 48.6	-17.2 -49.5 52.6 250
272.6	255.0	258.0	0.0 0.25 1.0 36.8	2.2 -48.5 48.6 272.6	0.0 0.449 1.0 44.2	-10.4 -49.4 50.6 258
281.4	262.5	264.8	0.0 0.125 1.0 35.0	9.4 -46.3 47.3 281.4	0.0 0.353 1.0 40.6	-4.7 -49.2 49.5 264
290.8	270.0	271.7	0.0 0.0 1.0 32.5	16.9 -44.6 47.7 290.8	0.0 0.261 1.0 37.3	1.5 -48.6 48.7 271
299.2	277.5	278.8	0.125 0.0 1.0 31.6	23.6 -42.2 48.4 299.2	0.0 0.169 1.0 35.7	7.0 -47.2 47.8 278
307.8	285.0	285.9	0.25 0.0 1.0 31.0	30.5 -39.3 49.8 307.8	0.0 0.065 1.0 33.9	13.1 -45.6 47.5 285
317.5	292.5	293.0	0.375 0.0 1.0 34.2	38.2 -35.0 51.8 317.5	0.026 0.0 1.0 32.4	18.4 -44.1 47.9 292
324.4	300.0	300.1	0.5 0.0 1.0 37.2	43.1 -30.8 53.0 324.4	0.139 0.0 1.0 31.5	24.4 -41.9 48.6 300
330.6	307.5	307.2	0.625 0.0 1.0 39.1	48.4 -27.2 55.6 330.6	0.235 0.0 1.0 31.1	29.8 -39.7 49.7 306
338.7	315.0	314.3	0.75 0.0 1.0 41.8	55.1 -21.4 59.1 338.7	0.335 0.0 1.0 33.2	35.8 -36.5 51.2 314
343.9	322.5	321.4	0.875 0.0 1.0 45.6	60.1 -17.3 62.6 343.9	0.439 0.0 1.0 35.8	40.8 -32.9 52.5 321
348.9	330.0	328.6	1.0 0.0 1.0 48.1	65.4 -12.7 66.6 348.9	0.584 0.0 1.0 38.5	46.8 -28.4 54.8 328
350.7	337.5	335.7	1.0 0.0 0.875 49.5	66.1 -10.7 67.0 350.7	0.696 0.0 1.0 40.7	52.3 -24.0 57.6 335
354.2	345.0	342.8	1.0 0.0 0.75 49.3	64.5 -6.5 64.8 354.2	0.848 0.0 1.0 44.9	59.1 -18.2 61.9 342
361.9	352.5	349.9	1.0 0.0 0.625 48.0	61.8 2.1 61.8 361.9	0.910 0.0 0.964 48.6	65.6 -12.1 66.8 349
370.0	360.0	357.0	1.0 0.0 0.5 47.8	58.9 10.4 59.9 370.0	1.0 0.0 0.828 49.5	65.6 -9.0 66.2 352
378.9	367.5	364.1	1.0 0.0 0.375 47.4	56.8 19.5 60.0 378.9	1.0 0.0 0.659 48.4	62.7 -0.1 62.7 359
386.2	375.0	371.2	1.0 0.0 0.25 47.5	55.9 27.5 62.3 386.2	1.0 0.0 0.519 47.8	59.5 9.2 60.2 368
391.3	382.5	378.3	1.0 0.0 0.125 47.6	56.3 34.2 65.9 391.3	1.0 0.0 0.408 47.5	57.6 17.1 60.0 376
393.4	390.0	385.4	1.0 0.0 0.0 47.5	57.2 37.8 68.6 393.4	1.0 0.0 0.263 47.6	56.1 26.7 62.1 385



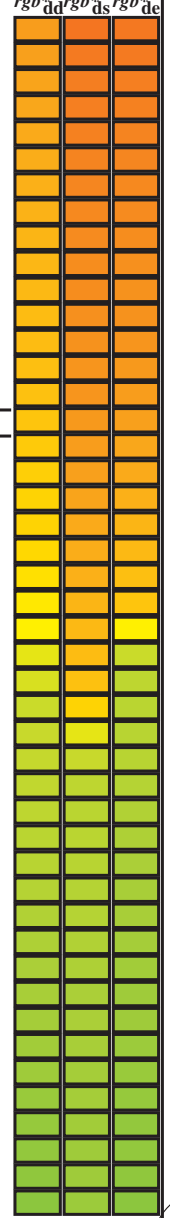
vea archivos semejantes: http://130.149.60.45/~farbmetrik/SS19/SS19.L0NA.TXT /PS
 información técnica: http://www.ps.bam.de o http://130.149.60.45/~farbmetrik

TUB matrícula: 20130201-SS19/SS19L0NA.TXT /PS
 aplicación para la medida salida de impresora láser, separación cmyn6 (CMYK)
 TUB material: code=rh4tra

Data of Maximum color M in colorimetric system Laser printer output; separation cmyn6*, D65 for input or output; Six hue angles of the 60 degree standard colours RYGBM_s; h_{ab,ds} = 30.0, 90.0, 150.0, 210.0, 270.0, 330.0;

Six hue angles of the device colours RYGBM_d; h_{ab,d} = 33.5, 100.6, 155.5, 235.2, 290.8, 348.9; Six hue angles of the elementary colours RYGBM_e; h_{ab,e} = 25.5, 92.3, 162.2, 217.0, 271.7, 328.6

Table with 15 columns of color data: h_ab,d, h_ab,s, h_ab,e, rgb*dd361M, LAB* ddx361Mi (x=LabCh), rgb*ds361Mi, LAB* dsx361Mi (x=LabCh), rgb*dd361Mi, LAB* de361Mi, LAB* dex361Mi (x=LabCh), rgb*dd361Mi, LAB* de361Mi, Y_d, Y_s, Y_e. Rows 2-127 show color patches.



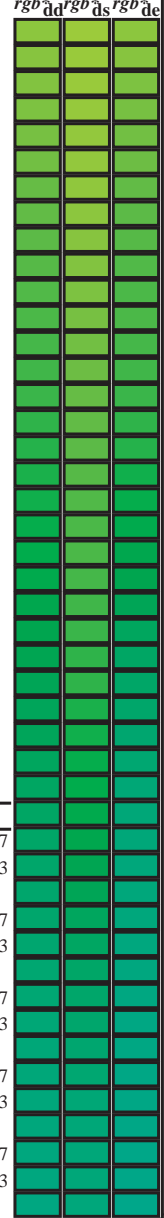
vea archivos semejantes: http://130.149.60.45/~farbmetrik/SS19/SS19.HTM informacion técnica: http://www.ps.bam.de o http://130.149.60.45/~farbmetrik

TUB matrícula: 20130201-SS19/SS19L0NA.TXT /.PS aplicación para la medida salida de impresora Láser, separacióncmyn6 (CMYK) TUB material: code=rh4ta

Data of Maximum color M in colorimetric system Laser printer output; separation cmyn6*, D65 for input or output; Six hue angles of the 60 degree standard colours RYGBM_s: h_{ab,ds} = 30.0, 90.0, 150.0, 210.0, 270.0, 330.0;

Six hue angles of the device colours RYGBM_d: h_{ab,d} = 33.5, 100.6, 155.5, 235.2, 290.8, 348.9; Six hue angles of the elementary colours RYGBM_e: h_{ab,e} = 25.5, 92.3, 162.2, 217.0, 271.7, 328.6

h _{ab,d}	h _{ab,s}	h _{ab,e}	rgb* dd361M	LAB* dxx361Mi (x=LabCh)	rgb* ds361Mi	LAB* dsx361Mi (x=LabCh)	rgb* dd361Mi	LAB* de361Mi	LAB* dex361Mi (x=LabCh)	rgb* dd361Mi	rgb* dd361Mi	rgb* dd361Mi	rgb* dd361Mi
127	120	127	0.5	1.0	0.0	70.9	-41.7	54.8	68.9	127	0.5	1.0	0.0
128	121	128	0.483	1.0	0.0	70.4	-42.6	53.9	68.7	128	0.483	1.0	0.0
129	122	129	0.466	1.0	0.0	69.8	-43.4	53.0	68.5	129	0.466	1.0	0.0
130	123	130	0.45	1.0	0.0	69.2	-44.2	52.1	68.3	130	0.45	1.0	0.0
131	124	131	0.433	1.0	0.0	68.6	-45.0	51.2	68.2	131	0.433	1.0	0.0
132	125	133	0.416	1.0	0.0	68.0	-45.7	50.3	68.0	132	0.416	1.0	0.0
133	126	134	0.4	1.0	0.0	67.4	-46.5	49.4	67.8	133	0.4	1.0	0.0
134	127	135	0.383	1.0	0.0	66.8	-47.2	48.5	67.7	134	0.383	1.0	0.0
135	128	136	0.366	1.0	0.0	66.1	-48.2	47.5	67.7	135	0.366	1.0	0.0
136	129	137	0.35	1.0	0.0	65.4	-49.5	46.6	68.1	136	0.35	1.0	0.0
138	130	138	0.333	1.0	0.0	64.6	-50.9	45.7	68.4	138	0.333	1.0	0.0
139	131	140	0.316	1.0	0.0	63.8	-52.2	44.7	68.7	139	0.316	1.0	0.0
140	132	141	0.3	1.0	0.0	63.0	-53.5	43.7	69.1	140	0.3	1.0	0.0
142	133	142	0.283	1.0	0.0	62.2	-54.7	42.6	69.4	142	0.283	1.0	0.0
143	134	143	0.266	1.0	0.0	61.4	-56.0	41.5	69.7	143	0.266	1.0	0.0
144	135	144	0.25	1.0	0.0	60.6	-57.2	40.4	70.1	144	0.25	1.0	0.0
145	136	145	0.233	1.0	0.0	60.1	-57.9	39.6	70.2	145	0.233	1.0	0.0
146	137	147	0.216	1.0	0.0	59.6	-58.6	38.9	70.3	146	0.216	1.0	0.0
147	138	148	0.2	1.0	0.0	59.1	-59.3	38.1	70.5	147	0.2	1.0	0.0
148	139	149	0.183	1.0	0.0	58.7	-59.9	37.3	70.6	148	0.183	1.0	0.0
148	140	150	0.166	1.0	0.0	58.2	-60.6	36.4	70.7	148	0.166	1.0	0.0
149	141	151	0.15	1.0	0.0	57.7	-61.2	35.6	70.9	149	0.15	1.0	0.0
150	142	152	0.133	1.0	0.0	57.2	-61.9	34.8	71.0	150	0.133	1.0	0.0
151	143	154	0.116	1.0	0.0	56.8	-62.5	34.1	71.3	151	0.116	1.0	0.0
151	144	155	0.1	1.0	0.0	56.4	-63.3	33.7	71.7	151	0.1	1.0	0.0
152	145	156	0.083	1.0	0.0	56.1	-64.0	33.2	72.1	152	0.083	1.0	0.0
153	146	157	0.066	1.0	0.0	55.7	-64.7	32.8	72.6	153	0.066	1.0	0.0
153	147	158	0.049	1.0	0.0	55.4	-65.5	32.3	73.0	153	0.049	1.0	0.0
154	148	159	0.033	1.0	0.0	55.0	-66.2	31.8	73.5	154	0.033	1.0	0.0
154	149	161	0.016	1.0	0.0	54.7	-66.9	31.3	73.9	154	0.016	1.0	0.0
155	150	162	0.0	1.0	0.0	54.3	-67.6	30.8	74.3	155	0.0	1.0	0.0
156	151	163	0.0	1.0	0.016	54.2	-67.5	29.7	73.8	156	0.0	1.0	0.017
156	152	164	0.0	1.0	0.033	54.2	-67.4	28.6	73.2	156	0.0	1.0	0.033
157	153	164	0.0	1.0	0.05	54.1	-67.2	27.6	72.7	157	0.0	1.0	0.05
158	154	165	0.0	1.0	0.066	54.0	-67.1	26.6	72.1	158	0.0	1.0	0.067
159	155	166	0.0	1.0	0.083	53.9	-66.9	25.5	71.6	159	0.0	1.0	0.083
159	156	167	0.0	1.0	0.1	53.9	-66.7	24.5	71.1	159	0.0	1.0	0.1
160	157	168	0.0	1.0	0.116	53.8	-66.5	23.5	70.5	160	0.0	1.0	0.117
161	158	169	0.0	1.0	0.133	53.8	-66.2	22.3	69.9	161	0.0	1.0	0.133
162	159	170	0.0	1.0	0.15	53.8	-65.8	20.8	69.1	162	0.0	1.0	0.15
163	160	171	0.0	1.0	0.166	53.8	-65.5	19.4	68.3	163	0.0	1.0	0.167
164	161	172	0.0	1.0	0.183	53.8	-65.0	18.1	67.5	164	0.0	1.0	0.183
165	162	173	0.0	1.0	0.2	53.8	-64.6	16.7	66.7	165	0.0	1.0	0.2
166	163	174	0.0	1.0	0.216	53.7	-64.1	15.4	66.0	166	0.0	1.0	0.217
167	164	175	0.0	1.0	0.233	53.7	-63.6	14.1	65.2	167	0.0	1.0	0.233
168	165	175	0.0	1.0	0.25	53.7	-63.1	12.8	64.4	168	0.0	1.0	0.25



vea archivos semejantes: http://130.149.60.45/~farbmetrik/SS19/SS19.HTM
 información técnica: http://www.ps.bam.de o http://130.149.60.45/~farbmetrik

TUB matrícula: 20130201-SS19/SS19L0NA.TXT /.PS
 aplicación para la medida salida de impresora Láser, separacióncmyn6 (CMYK)
 TUB material: code=rh4ta

Data of Maximum color M in colorimetric system Laser printer output; separation cmy6*, D65 for input or output; Six hue angles of the 60 degree standard colours RYGBM; $h_{ab,ds} = 30.0, 90.0, 150.0, 210.0, 270.0, 330.0$;

Table with columns: h_ab,d, h_ab,s, h_ab,e, rgb*dd361M, LAB*ddx361Mi (x=LabCh), rgb*ds361Mi, LAB*dsx361Mi (x=LabCh), rgb*de361Mi, LAB*dex361Mi (x=LabCh), rgb*dd361Mi, LAB*dd361Mi. Rows 168-235. Includes a color bar on the right with columns for red, green, blue, and yellow tones.

vea archivos semejantes: http://130.149.60.45/~farbmetrik/SS19/SS19.HTM información técnica: http://www.ps.bam.de o http://130.149.60.45/~farbmetrik

TUB matrícula: 20130201-SS19/SS19L0NA.TXT /.PS TUB material: code=rh4ta aplicación para la medida salida de impresora Láser, separacióncmy6 (CMYK)

Data of Maximum color M in colorimetric system Laser printer output; separation cmyn6*, D65 for input or output; Six hue angles of the 60 degree standard colours RYGBM_s: h_{ab,ds} = 30.0, 90.0, 150.0, 210.0, 270.0, 330.0;

Six hue angles of the device colours RYGBM_d: h_{ab,d} = 33.5, 100.6, 155.5, 235.2, 290.8, 348.9; Six hue angles of the elementary colours RYGBM_e: h_{ab,e} = 25.5, 92.3, 162.2, 217.0, 271.7, 328.6

h _{ab,d}	h _{ab,s}	h _{ab,e}	rgb* _{dd361M}				LAB* _{ddx361Mi} (x=LabCh)				C _d	rgb* _{ds361Mi}				LAB* _{dsx361Mi} (x=LabCh)				210C _s	rgb* _{de361Mi}				LAB* _{dex361Mi} (x=LabCh)				216C _e	rgb* _{dd361Mi}				rgb* _{ds361Mi}				rgb* _{de361Mi}																																																																																																																																																																																																																																																																																																																																																																																																																																																																																																																																																																																																																																								
			0.0	1.0	1.0	53.1	-30.0	-43.1	52.5	235		0.0	1.0	0.694	55.3	-41.6	-24.0	48.2	210C _s		0.0	1.0	1.0	1.0	0.0	1.0	0.792	55.0		-38.6	-29.0	48.4	216C _e	0.0	1.0	1.0	1.0	0.0	1.0	0.807	54.9	-38.3	-29.8	48.6	217	0.0	0.983	1.0	0.0	1.0	0.822	54.8	-37.9	-30.5	48.8	218	0.0	0.967	1.0	0.0	1.0	0.837	54.7	-37.6	-31.2	49.0	219	0.0	0.95	1.0	0.0	1.0	0.853	54.6	-37.2	-31.9	49.2	220	0.0	0.933	1.0	0.0	1.0	0.868	54.5	-36.9	-32.6	49.4	221	0.0	0.917	1.0	0.0	1.0	0.883	54.4	-36.5	-33.4	49.6	222	0.0	0.9	1.0	0.0	1.0	0.888	54.3	-36.1	-34.1	49.8	223	0.0	0.883	1.0	0.0	1.0	0.897	54.2	-35.7	-34.8	50.0	224	0.0	0.867	1.0	0.0	1.0	0.906	54.1	-35.3	-35.5	50.2	225	0.0	0.85	1.0	0.0	1.0	0.914	54.1	-34.9	-36.2	50.4	226	0.0	0.833	1.0	0.0	1.0	0.923	54.0	-34.4	-36.9	50.6	227	0.0	0.817	1.0	0.0	1.0	0.932	53.9	-34.0	-37.6	50.8	228	0.0	0.8	1.0	0.0	1.0	0.941	53.8	-33.5	-38.3	51.1	229	0.0	0.783	1.0	0.0	1.0	0.949	53.7	-33.0	-39.0	51.3	230	0.0	0.767	1.0	0.0	1.0	0.957	53.6	-32.5	-39.7	51.5	231	0.0	0.75	1.0	0.0	1.0	0.966	53.5	-32.0	-40.4	51.7	232	0.0	0.733	1.0	0.0	1.0	0.975	53.4	-31.5	-41.1	51.9	233	0.0	0.716	1.0	0.0	1.0	0.983	53.3	-31.0	-41.7	52.1	234	0.0	0.7	1.0	0.0	1.0	0.992	53.2	-30.4	-42.4	52.3	235	0.0	0.683	1.0	0.0	1.0	0.997	53.1	-29.9	-43.1	52.5	236	0.0	0.667	1.0	0.0	1.0	0.996	53.1	-29.2	-43.6	52.6	237	0.0	0.65	1.0	0.0	1.0	0.991	53.1	-28.6	-44.1	52.7	238	0.0	0.633	1.0	0.0	1.0	0.986	53.1	-28.0	-44.6	52.7	239	0.0	0.617	1.0	0.0	1.0	0.981	53.1	-27.4	-45.1	52.8	240	0.0	0.6	1.0	0.0	1.0	0.976	53.1	-26.8	-45.6	52.8	241	0.0	0.583	1.0	0.0	1.0	0.971	53.1	-26.2	-46.1	52.9	242	0.0	0.567	1.0	0.0	1.0	0.966	53.1	-25.6	-46.6	52.9	243	0.0	0.55	1.0	0.0	1.0	0.961	53.1	-25.0	-47.1	52.9	244	0.0	0.533	1.0	0.0	1.0	0.956	53.1	-24.4	-47.6	52.9	245	0.0	0.517	1.0	0.0	1.0	0.951	53.1	-23.8	-48.1	52.9	246	0.0	0.5	1.0	0.0	1.0	0.946	53.1	-23.2	-48.6	52.9	247	0.0	0.483	1.0	0.0	1.0	0.941	53.1	-22.6	-49.1	52.9	248	0.0	0.467	1.0	0.0	1.0	0.936	53.1	-22.0	-49.6	52.9	249	0.0	0.45	1.0	0.0	1.0	0.931	53.1	-21.4	-50.1	52.9	250	0.0	0.433	1.0	0.0	1.0	0.926	53.1	-20.8	-50.6	52.9	251	0.0	0.417	1.0	0.0	1.0	0.921	53.1	-20.2	-51.1	52.9	252	0.0	0.4	1.0	0.0	1.0	0.916	53.1	-19.6	-51.6	52.9	253	0.0	0.383	1.0	0.0	1.0	0.911	53.1	-19.0	-52.1	52.9	254	0.0	0.367	1.0	0.0	1.0	0.906	53.1	-18.4	-52.6	52.9	255	0.0	0.35	1.0	0.0	1.0	0.901	53.1	-17.8	-53.1	52.9	256	0.0	0.333	1.0	0.0	1.0	0.896	53.1	-17.2	-53.6	52.9	257	0.0	0.317	1.0	0.0	1.0	0.891	53.1	-16.6	-54.1	52.9	258	0.0	0.3	1.0	0.0	1.0	0.886	53.1	-16.0	-54.6	52.9	259	0.0	0.283	1.0	0.0	1.0	0.881	53.1	-15.4	-55.1	52.9	260	0.0	0.266	1.0	0.0	1.0	0.876	53.1	-14.8	-55.6	52.9	261	0.0	0.25	1.0	0.0	1.0	0.871	53.1	-14.2	-56.1	52.9	262	0.0	0.25	1.0	0.0	1.0	0.866	53.1	-13.6	-56.6	52.9	263	0.0	0.25	1.0	0.0	1.0	0.861	53.1	-13.0	-57.1	52.9	264	0.0	0.25	1.0	0.0	1.0	0.856	53.1	-12.4	-57.6	52.9	265	0.0	0.25	1.0	0.0	1.0	0.851	53.1	-11.8	-58.1	52.9	266	0.0	0.25	1.0	0.0	1.0	0.846	53.1	-11.2	-58.6	52.9	267	0.0	0.25	1.0	0.0	1.0	0.841	53.1	-10.6	-59.1	52.9	268	0.0	0.25	1.0	0.0	1.0	0.836	53.1	-10.0	-59.6	52.9	269	0.0	0.25	1.0	0.0	1.0	0.831	53.1	-9.4	-60.1	52.9	270	0.0	0.25	1.0	0.0	1.0	0.826	53.1	-8.8	-60.6	52.9	271	0.0	0.25	1.0	0.0	1.0	0.821	53.1	-8.2	-61.1	52.9	272	0.0	0.25	1.0	0.0

TUB matrícula: 20130201-SS19/SS19L0NA.TXT /.PS
aplicación para la medida salida de impresora Láser, separacióncmyn6 (CMYK)
TUB material: code=rh4ta

vea archivos semejantes: http://130.149.60.45/~farbmetrik/SS19/SS19.HTM
información técnica: http://www.ps.bam.de o http://130.149.60.45/~farbmetrik

Table with columns: n/j, HIC*Fe, rgb*Fe, icf*Fe, hsi*Fe, rgb*Fe, LabCh*Fe, rgb*Fe, LabCh*Fe, DE*Fe, hsiMe, rgb*Me, LabCh*Me. It contains multiple rows of color and material data, including various R00Y, R25Y, R50Y, R75Y, Y00G, Y25G, Y50G, Y75G, G00B, G25B, G50B, G75B, B00M, B25R, B50R, B75R, and NW series.

vea archivos semejantes: http://130.149.60.45/~farbmetrik/SS19/SS19.HTM
información técnica: http://www.ps.bam.de o http://130.149.60.45/~farbmetrik

TUB matrícula: 20130201-SS19/SS19L0NA.TXT /.PS
aplicación para la medida salida de impresora láser, separacióncmykn6 (CMYK)
TUB material: code=rh4ta

gráfico TUB-SS19; 1080 colores estándar
colores y diferencia en color, ΔE*, 3D=0, de=1, cmyk

entrada: rgb/cmyk -> rgb_e
salida: transfiera a cmyk_e

delta E* = 12.1

2-0131830-F0

SS190-7N, 19/33-F

2-0131830-F0

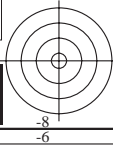


Table with 28 columns: n, HIC*Fe, rgb*Fe, icf*Fe, hsi*Fe, rgb*Fe, LabCh*Fe, rgb*Fe, LabCh*Fe, DE*Fe, hsi*Fe, rgb*Me, LabCh*Me. Rows 162-242. Includes a 'delta E*' = 11.0 value at the bottom right of the table area.

gráfico TUB-SS19; 1080 colores estándar colores y diferencia en color, ΔE*, 3D=0, de=1, cmyk

entrada: rgb/cmyk -> rgb salida: transfiera a cmyk

vea archivos semejantes: http://130.149.60.45/~farbmetrik/SS19/SS19.HTM información técnica: http://www.ps.bam.de o http://130.149.60.45/~farbmetrik

TUB matrícula: 20130201-SS19/SS19L0NA.TXT /.PS aplicación para la medida salida de impresora Láser, separacióncmykn6 (CMYK) TUB material: code=rh4ta

Table with columns for color channels (n, HIC*Fe, rgb*Fe, icf*Fe, hsi*Fe, rgb*Fe, LabCh*Fe, rgb*Fe, LabCh*Fe, DE*Fe, hsiMe, rgb*Me, LabCh*Me) and rows of color data.

delta E* = 10.9

gráfico TUB-SS19; 1080 colores estándar colores y diferencia en color, ΔE*, 3D=0, de=1, cmyk

entrada: rgb/cmyk -> rgb salida: transfiera a cmyk

vea archivos semejantes: http://130.149.60.45/~farbmetrik/SS19/SS19.HTM información técnica: http://www.ps.bam.de o http://130.149.60.45/~farbmetrik

TUB matrícula: 20130201-SS19/SS19L0NA.TXT /.PS TUB material: code=rh4ta aplicación para la medida salida de impresora Láser, separacióncmykn6 (CMYK)

Table with columns for color names (e.g., R00Y_087_087a, R36Y_087_087a), their primary and secondary color values (e.g., 0.875, 0.0, 0.125), and LabCh* values (e.g., 390, 382, 374). It lists 1080 color patches used in the TUB-SS19 printing process.

TUB matrícula: 20130201-SS19/SS19LONA.TXT /.PS
aplicación para la medida salida de impresora Láser, separacióncmykn6 (CMYK)

TUB material: code=rhatha

2-0132630-F0

SS190-7N, 2733-F

delta E** = 13.7

gráfico TUB-SS19; 1080 colores estándar
colores y diferencia en color, ΔE*, 3D=0, de=1, cmyk

entrada: rgb/cmyk -> rgb
salida: transfiera a cmyk

Table with columns for various color channels (HIC*Fe, rgb*Fe, icf*Fe, hsi*Fe, rgb*Fe, LabCh*Fe, DE*Fe, hsiMe, rgb*Me, LabCh*Me) and rows for different color patches (e.g., 648, 649, 650, etc.).

2-0132730-F0

SS190N-7N, 2833-F

delta E* = 15.8

gráfico TUB-SS19; 1080 colores estándar colores y diferencia en color, ΔE*, 3D=0, de=1, cmyk

entrada: rgb/cmyk -> rgb salida: transfiera a cmyk

2-0132730-F0

vea archivos semejantes: http://130.149.60.45/~farbmetrik/SS19/SS19.HTM información técnica: http://www.ps.bam.de o http://130.149.60.45/~farbmetrik

TUB matrícula: 20130201-SS19/SS19L0NA.TXT /PS aplicación para la medida salida de impresora láser, separacióncmykn6 (CMYK) TUB material: code=rh4ta

Table with columns for color names (e.g., HIC*Fe, rgb*Fe, icf*Fe, hsi*Fe, LabCh*Fe) and numerical values for each color. Includes a 'delta E*' = 11.3' label at the bottom right of the table area.

gráfico TUB-SS19; 1080 colores estándar colores y diferencia en color, ΔE*, 3D=0, de=1, cmyk

entrada: rgb/cmyk -> rgb salida: transfiera a cmyk

vea archivos semejantes: http://130.149.60.45/~farbmetrik/SS19/SS19.HTM información técnica: http://www.ps.bam.de o http://130.149.60.45/~farbmetrik

TUB matrícula: 20130201-SS19/SS19L0NA.TXT /PS TUB material: code=rh4ta aplicación para la medida salida de impresora láser, separacióncmykn6 (CMYK)

Table with columns for color channels (n, HIC*Fe, rgb*Fe, icf*Fe, hsi*Fe, LabCh*Fe) and their corresponding values for 1080 different color patches. Includes a 'delta E*' = 13.2' value at the bottom right of the table area.

gráfico TUB-SS19; 1080 colores estándar colores y diferencia en color, ΔE*, 3D=0, de=1, cmyk

entrada: rgb/cmyk -> rgb salida: transfiera a cmyk

vea archivos semejantes: http://130.149.60.45/~farbmetrik/SS19/SS19.HTM información técnica: http://www.ps.bam.de o http://130.149.60.45/~farbmetrik

TUB matrícula: 20130201-SS19/SS19L0NA.TXT /.PS TUB material: code=rh4ta aplicación para la medida salida de impresora láser, separacióncmykn6 (CMYK)

vea archivos semejantes: <http://130.149.60.45/~farbmetrik/SS19/SS19.HTM>
información técnica: <http://www.ps.bam.de> o <http://130.149.60.45/~farbmetrik>

TUB matrícula: 20130201-SS19/SS19L0NA.TXT /PS
aplicación para la medida salida de impresora Láser, separacióncmykn6 (CMYK)
TUB material: code=rh4ta

Table with columns: n, HIC*Fe, rgb*Fe, icf*Fe, hsi*Fe, rgb*Fe, LabCh*Fe, rgb*Fe, LabCh*Fe, DE*Fe, hsiMe, rgb*Me, LabCh*Me. Rows list various file names and their corresponding color calibration data.

delta E* = 10.5

2-0133030-F0

SS190-7N, 31-33-F

gráfico TUB-SS19; 1080 colores estándar
colores y diferencia en color, ΔE*, 3D=0, de=1, cmyk

entrada: rgb/cmyk -> rgb_e
salida: transfiera a cmyk_e

2-0133030-F0

vea archivos semejantes: <http://130.149.60.45/~farbmetrik/SS19/SS19.HTM>
 información técnica: <http://www.ps.bam.de> o <http://130.149.60.45/~farbmetrik>

n	HIC*Fe	rgb_Fe	icf_Fe	hsi_Fe	rgb*Fe	LabCh*Fe	rgb*Fe	LabCh*Fe	DE*Fe	hsiMe	rgb*Me	LabCh*Me
1053	NW_086e	0.866 0.866 0.866	0.866 0.0 0.866	360	0.866 0.866 0.866	86.1 0.0 0.0	0.0 0.0 0.0	0.0 0.0 0.0	266.5 4.4	360	1.0 1.0 1.0	95.8 0.0 0.0
1054	NW_093e	0.933 0.933 0.933	0.933 0.0 0.933	360	0.933 0.933 0.933	91.0 0.0 0.0	0.0 0.0 0.0	0.0 0.0 0.0	278.1 3.4	360	1.0 1.0 1.0	95.8 0.0 0.0
1055	NW_100e	1.0 1.0 1.0	1.0 0.0 1.0	360	1.0 1.0 1.0	95.8 0.0 0.0	0.0 0.0 0.0	0.0 0.0 0.0	152.8 0.0	360	1.0 1.0 1.0	95.8 0.0 0.0
1056	NW_000e	0.0 0.0 0.0	0.0 0.0 0.0	360	0.0 0.0 0.0	23.8 0.0 0.0	0.0 0.0 0.0	0.0 0.0 0.0	83.2 5.6	360	1.0 1.0 1.0	95.8 0.0 0.0
1057	NW_006e	0.066 0.066 0.066	0.066 0.0 0.066	360	0.066 0.066 0.066	28.6 0.0 0.0	0.0 0.0 0.0	0.0 0.0 0.0	48.9 7.0	360	1.0 1.0 1.0	95.8 0.0 0.0
1058	NW_013e	0.133 0.133 0.133	0.133 0.0 0.133	360	0.133 0.133 0.133	33.4 0.0 0.0	0.0 0.0 0.0	0.0 0.0 0.0	268.2 4.4	360	1.0 1.0 1.0	95.8 0.0 0.0
1059	NW_020e	0.2 0.2 0.2	0.2 0.0 0.2	360	0.2 0.2 0.2	38.2 0.0 0.0	0.0 0.0 0.0	0.0 0.0 0.0	267.2 1.4	360	1.0 1.0 1.0	95.8 0.0 0.0
1060	NW_026e	0.266 0.266 0.266	0.266 0.0 0.266	360	0.266 0.266 0.266	42.9 0.0 0.0	0.0 0.0 0.0	0.0 0.0 0.0	269.1 1.7	360	1.0 1.0 1.0	95.8 0.0 0.0
1061	NW_033e	0.333 0.333 0.333	0.333 0.0 0.333	360	0.333 0.333 0.333	47.8 0.0 0.0	0.0 0.0 0.0	0.0 0.0 0.0	274.5 2.3	360	1.0 1.0 1.0	95.8 0.0 0.0
1062	NW_040e	0.4 0.4 0.4	0.4 0.0 0.4	360	0.4 0.4 0.4	52.6 0.0 0.0	0.0 0.0 0.0	0.0 0.0 0.0	273.2 1.4	360	1.0 1.0 1.0	95.8 0.0 0.0
1063	NW_046e	0.466 0.466 0.466	0.466 0.0 0.466	360	0.466 0.466 0.466	57.3 0.0 0.0	0.0 0.0 0.0	0.0 0.0 0.0	268.9 2.6	360	1.0 1.0 1.0	95.8 0.0 0.0
1064	NW_053e	0.533 0.533 0.533	0.533 0.0 0.533	360	0.533 0.533 0.533	62.2 0.0 0.0	0.0 0.0 0.0	0.0 0.0 0.0	273.1 3.3	360	1.0 1.0 1.0	95.8 0.0 0.0
1065	NW_060e	0.6 0.6 0.6	0.6 0.0 0.6	360	0.6 0.6 0.6	67.0 0.0 0.0	0.0 0.0 0.0	0.0 0.0 0.0	268.8 3.2	360	1.0 1.0 1.0	95.8 0.0 0.0
1066	NW_066e	0.666 0.666 0.666	0.666 0.0 0.666	360	0.666 0.666 0.666	71.7 0.0 0.0	0.0 0.0 0.0	0.0 0.0 0.0	271.9 3.8	360	1.0 1.0 1.0	95.8 0.0 0.0
1067	NW_073e	0.734 0.734 0.734	0.734 0.0 0.734	360	0.734 0.734 0.734	76.6 0.0 0.0	0.0 0.0 0.0	0.0 0.0 0.0	265.0 4.1	360	1.0 1.0 1.0	95.8 0.0 0.0
1068	NW_08e	0.8 0.8 0.8	0.8 0.0 0.8	360	0.8 0.8 0.8	81.4 0.0 0.0	0.0 0.0 0.0	0.0 0.0 0.0	279.5 3.9	360	1.0 1.0 1.0	95.8 0.0 0.0
1069	NW_086e	0.866 0.866 0.866	0.866 0.0 0.866	360	0.866 0.866 0.866	86.1 0.0 0.0	0.0 0.0 0.0	0.0 0.0 0.0	252.2 4.0	360	1.0 1.0 1.0	95.8 0.0 0.0
1070	NW_093e	0.933 0.933 0.933	0.933 0.0 0.933	360	0.933 0.933 0.933	91.0 0.0 0.0	0.0 0.0 0.0	0.0 0.0 0.0	289.2 3.2	360	1.0 1.0 1.0	95.8 0.0 0.0
1071	NW_100e	1.0 1.0 1.0	1.0 0.0 1.0	360	1.0 1.0 1.0	95.8 0.0 0.0	0.0 0.0 0.0	0.0 0.0 0.0	331.9 0.1	360	1.0 1.0 1.0	95.8 0.0 0.0
1072	NW_000e	0.0 0.0 0.0	0.0 0.0 0.0	360	0.0 0.0 0.0	23.8 0.0 0.0	0.0 0.0 0.0	0.0 0.0 0.0	58.1 4.6	360	1.0 1.0 1.0	95.8 0.0 0.0
1073	NW_100e	1.0 1.0 1.0	1.0 0.0 1.0	360	1.0 1.0 1.0	95.8 0.0 0.0	0.0 0.0 0.0	0.0 0.0 0.0	284.6 0.2	360	1.0 1.0 1.0	95.8 0.0 0.0
1074	R00Y_100_100e	1.0 0.0 0.0	1.0 1.0 0.5	390	1.0 0.0 0.263	47.5 56.0 26.7	62.1 25.4	56.3 40.2	69.2 35.5 13.5	375	1.0 0.0 0.263	47.5 56.0 26.7
1075	G50B_100_100e	0.0 1.0 1.0	1.0 1.0 0.5	210	0.0 1.0 0.791	54.9 -38.7 -29.1	48.4 216.9	0.0 1.0 1.0	54.9 -30.4 -42.0	198	0.0 1.0 0.791	54.9 -38.7 -29.1
1076	Y00G_100_100e	1.0 1.0 0.0	1.0 1.0 0.5	90	1.0 0.768 0.0	83.6 -3.1 76.8	76.9 92.3	1.0 1.0 0.0	91.5 -16.0 86.1	77	1.0 0.768 0.0	83.6 -3.1 76.8
1077	B00R_100_100e	0.0 0.0 1.0	1.0 1.0 0.5	270	0.0 0.261 1.0	37.3 1.4 -48.6	48.7 271.7	0.0 0.0 1.0	30.7 21.3 -44.1	157	0.0 0.261 1.0	37.3 1.4 -48.6
1078	G00B_100_100e	0.0 1.0 0.0	1.0 1.0 0.5	150	0.0 1.0 0.146	53.8 -65.9 21.1	69.2 162.2	0.0 1.0 0.0	54.6 -69.2 33.1	157	0.0 1.0 0.146	53.8 -65.9 21.1
1079	B50R_100_100e	1.0 0.0 1.0	1.0 1.0 0.5	330	0.584 0.0 1.0	38.5 46.7 -28.5	54.7 328.6	1.0 0.0 1.0	48.3 66.3 -13.8	305	0.584 0.0 1.0	38.5 46.7 -28.5

delta E* = 6.3

2-0133230-F0

SS190-7N, 33/33-F

gráfico TUB-SS19; 1080 colores estándar
 colores y diferencia en color, ΔE^* , 3D=0, de=1, cmyk

entrada: *rgb/cmyk* -> *rgbe*
 salida: transfiera a *cmyke*

2-0133230-F0

TUB matrícula: 20130201-SS19/SS19L0NA.TXT /.PS
 aplicación para la medida salida de impresora Láser, separación cmykn6 (CMYK)
 TUB material: code=rh4ta