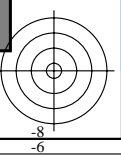
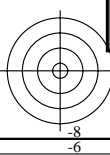
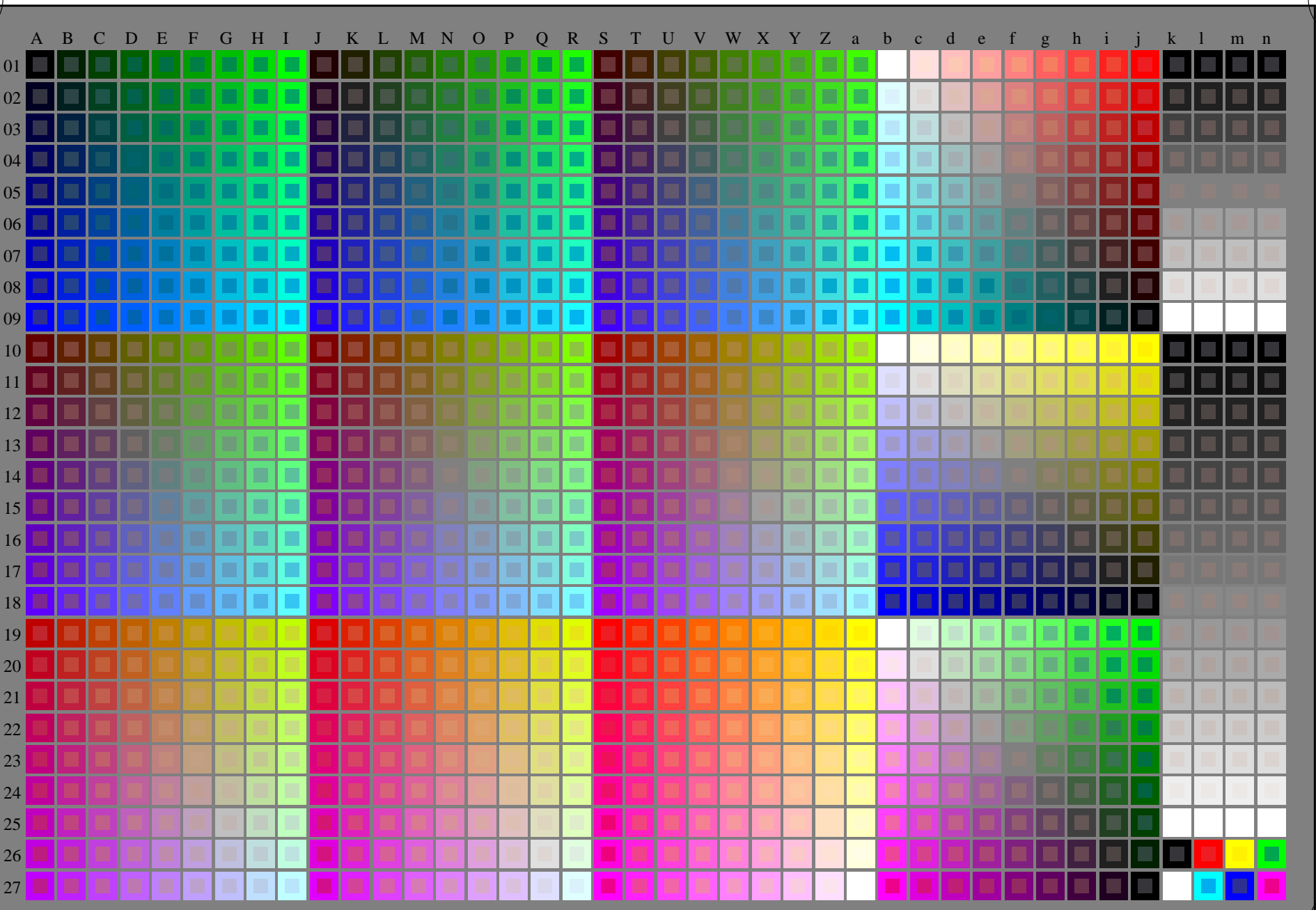


vea archivos semejantes: <http://130.149.60.45/~farbmetrik/SS19/SS19.HTM>  
información técnica: <http://www.ps.bam.de> o <http://130.149.60.45/~farbmetrik>

TUB matrícula: 20130201-SS19/SS19L0NP.PDF /.PS  
aplicación para la medida salida de impresora láser

TUB material: code=rh4ta



SS190-7N  
gráfico TUB-SS19; 1080 colores estándar  
gráfico según a DIN 33872

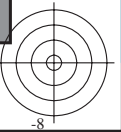
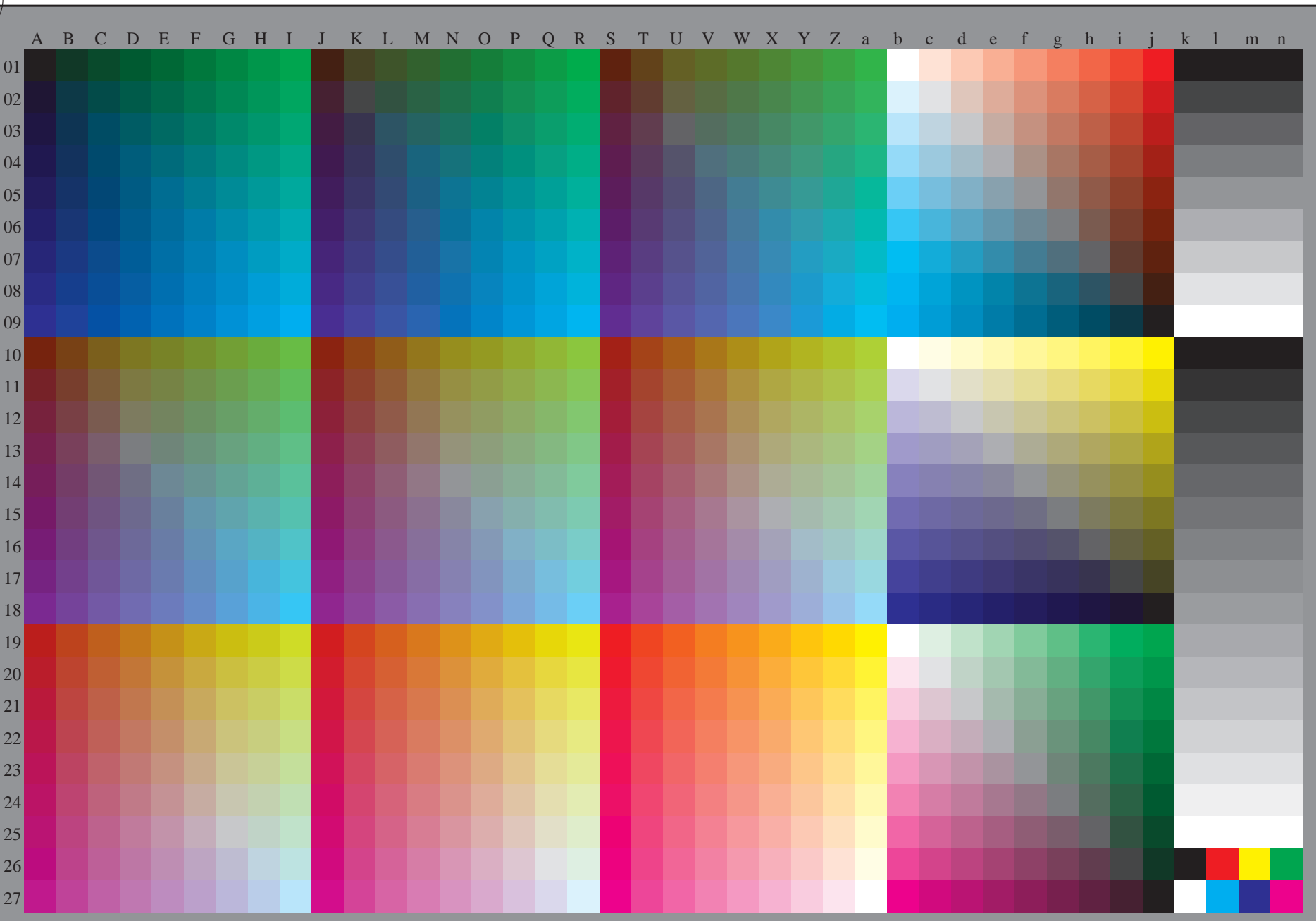
entrada: *rgb/cmyk* -> *rgb/cmyk*  
salida: ningún cambio





vea archivos semejantes: <http://130.149.60.45/~farbmetrik/SS19/SS19.HTM>  
información técnica: <http://www.ps.bam.de> o <http://130.149.60.45/~farbmetrik>

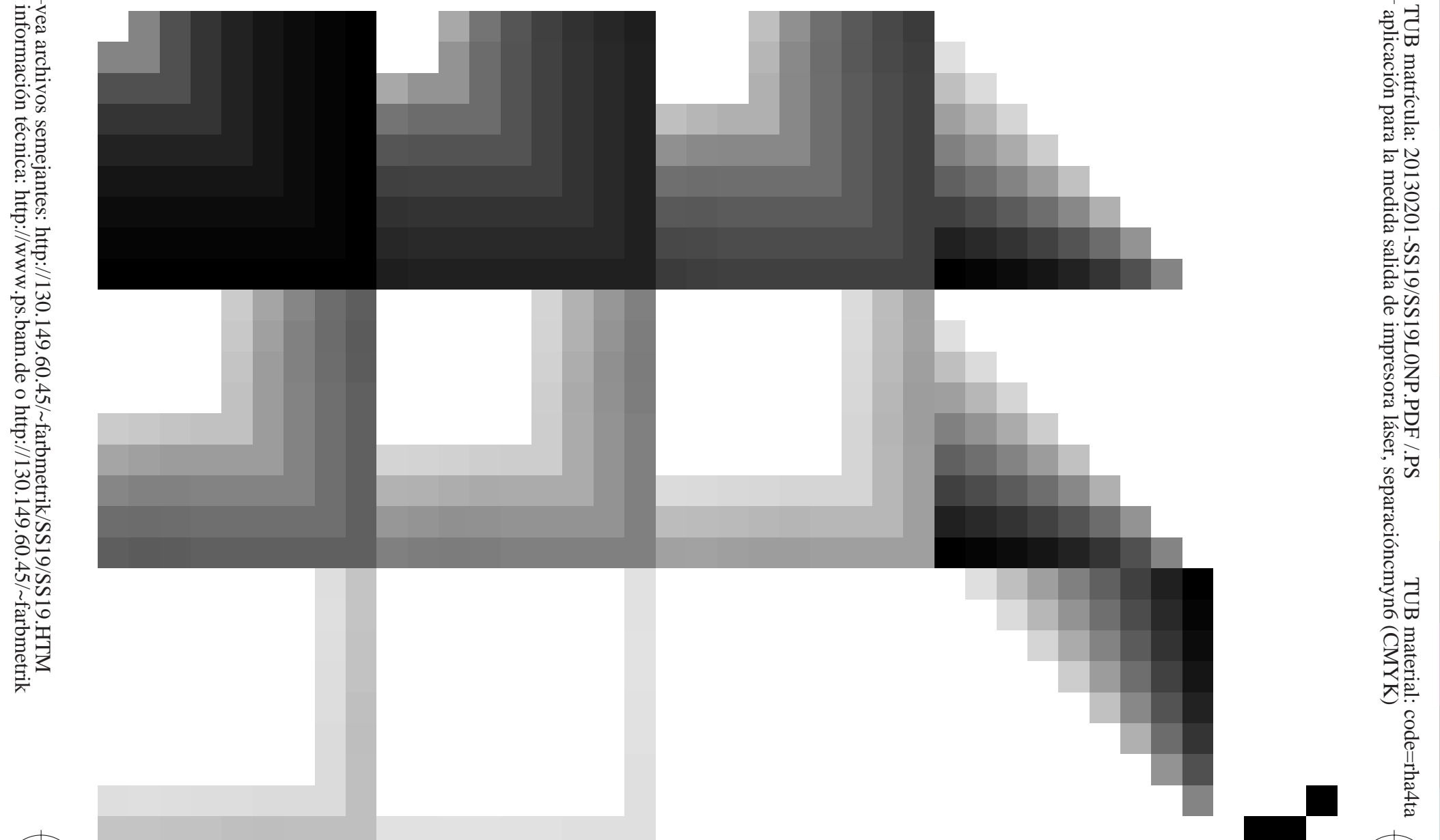
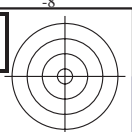
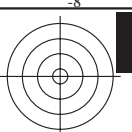
TUB matrícula: 20130201-SS19/SS19L0NP.PDF /.PS  
aplicación para la medida salida de impresora láser, separación cmykn6 (CMYK)  
TUB material: code=rh4ta



2-003130-L0 SS190-70 rgb (A\_n, 3D=0)  
gráfico TUB-SS19; 1080 colores estándar  
gráfico según a DIN 33872, 3D=0, de=0, cmyk

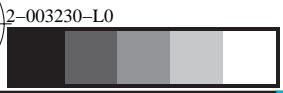
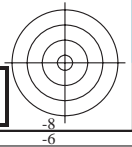
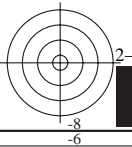
entrada: *rgb/cmyk* -> *rgb<sub>D</sub>*  
salida: *transfiera a cmyk<sub>D</sub>*





vea archivos semejantes: <http://130.149.60.45/~farbmetrik/SS19/SS19.HTM>  
información técnica: <http://www.ps.bam.de> o <http://130.149.60.45/~farbmetrik>

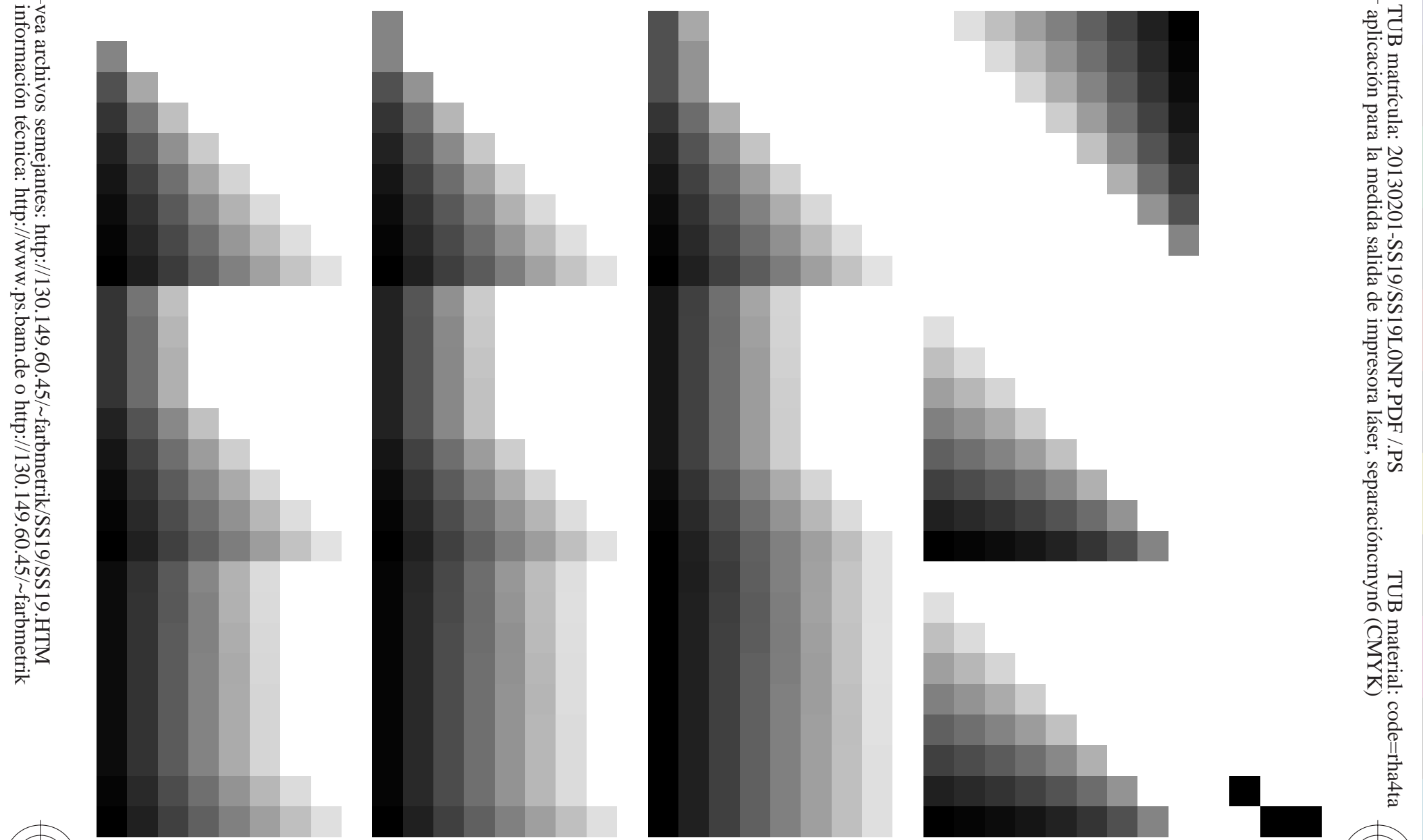
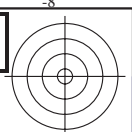
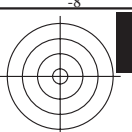
TUB matrícula: 20130201-SS19/SS19L0NP.PDF /.PS  
aplicación para la medida salida de impresora láser, separacióncmykn6 (CMYK)  
TUB material: code=rh4ta



2-003230-L0 SS190-70  
gráfico TUB-SS19; 1080 colores estándar  
gráfico según a DIN 33872, 3D=0, de=0, cmyk

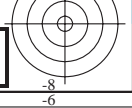
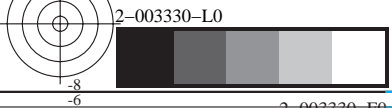
entrada: *rgb/cmyk* -> *rgb<sub>d</sub>*  
salida: transfiera a *cmyk<sub>d</sub>*





vea archivos semejantes: <http://130.149.60.45/~farbmetrik/SS19/SS19.HTM>  
información técnica: <http://www.ps.bam.de> o <http://130.149.60.45/~farbmetrik>

TUB matrícula: 20130201-SS19/SS19L0NP.PDF /.PS  
aplicación para la medida salida de impresora láser, separacióncmykn6 (CMYK)  
TUB material: code=rh4ta

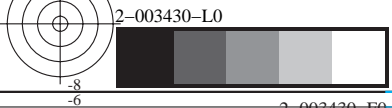
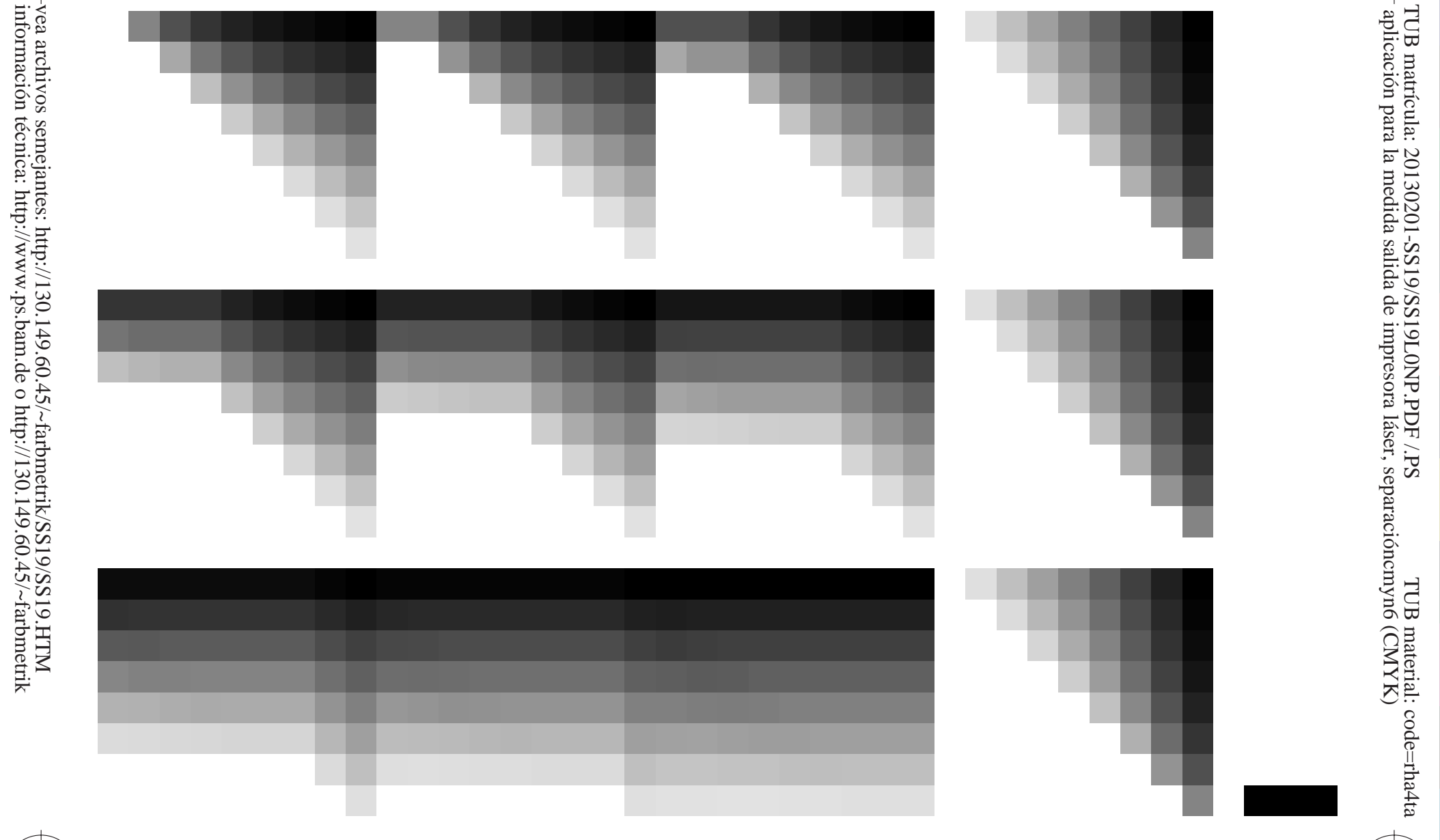


2-003330-L0 SS190-70  
gráfico TUB-SS19; 1080 colores estándar  
gráfico según a DIN 33872, 3D=0, de=0, cmyk

entrada: *rgb/cmyk* -> *rgb<sub>D</sub>*  
salida: transfiera a *cmyk<sub>D</sub>*

vea archivos semejantes: <http://130.149.60.45/~farbmetrik/SS19/SS19.HTM>  
información técnica: <http://www.ps.bam.de> o <http://130.149.60.45/~farbmetrik>

TUB matrícula: 20130201-SS19/SS19L0NP.PDF /.PS TUB material: code=rh4ta  
aplicación para la medida salida de impresora láser, separacióncmykn6 (CMYK)



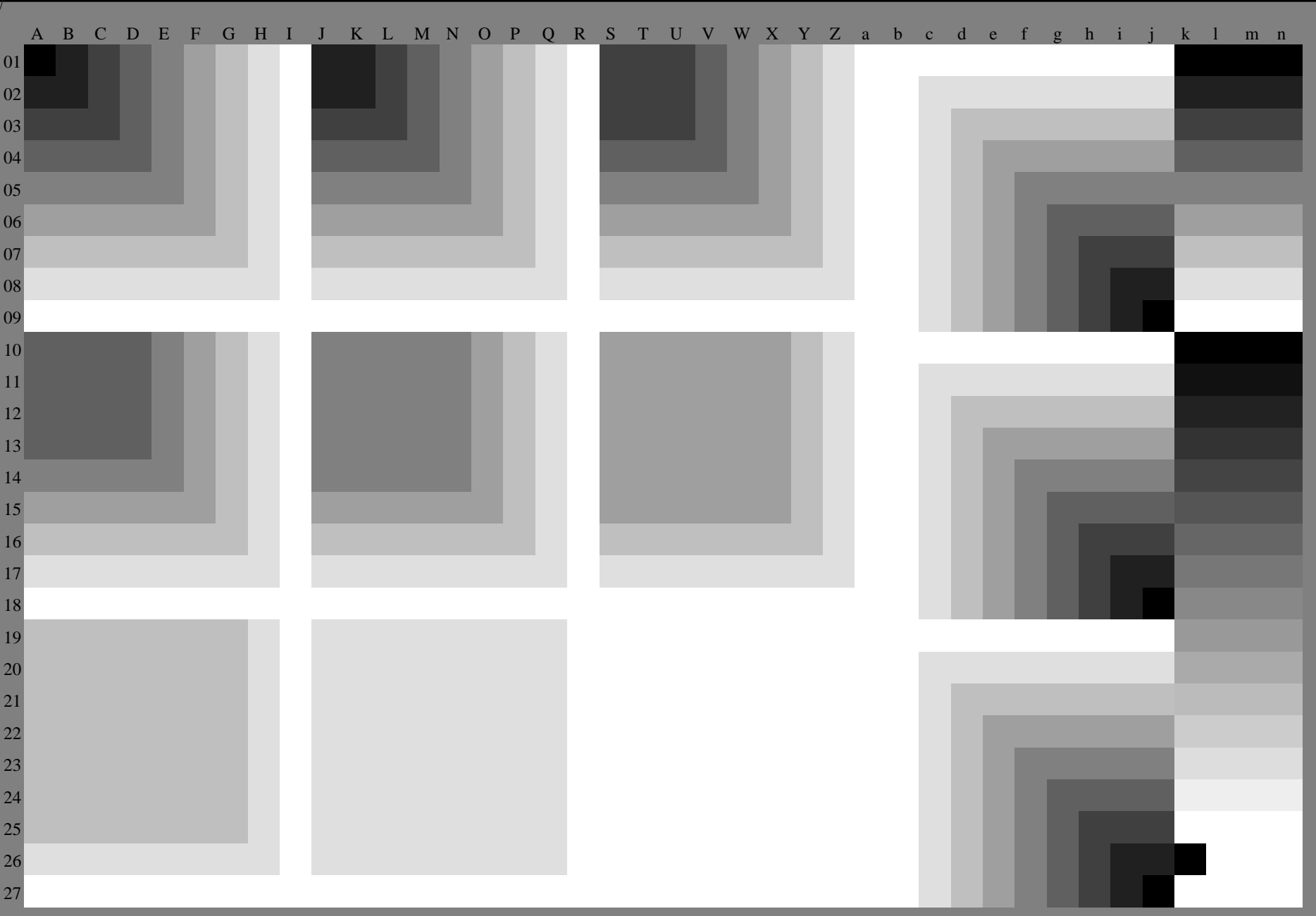
SS190-70  
gráfico TUB-SS19; 1080 colores estándar  
gráfico según a DIN 33872, 3D=0, de=0, cmyk

entrada: *rgb/cmyk* -> *rgb<sub>d</sub>*  
salida: transfiera a *cmyk<sub>d</sub>*



vea archivos semejantes: <http://130.149.60.45/~farbmetrik/SS19/SS19.HTM>  
información técnica: <http://www.ps.bam.de> o <http://130.149.60.45/~farbmetrik>

TUB matrícula: 20130201-SS19/SS19L0NP.PDF /.PS  
aplicación para la medida salida de impresora láser, separacióncmykn6 (CMYK)  
TUB material: code=rh4ta

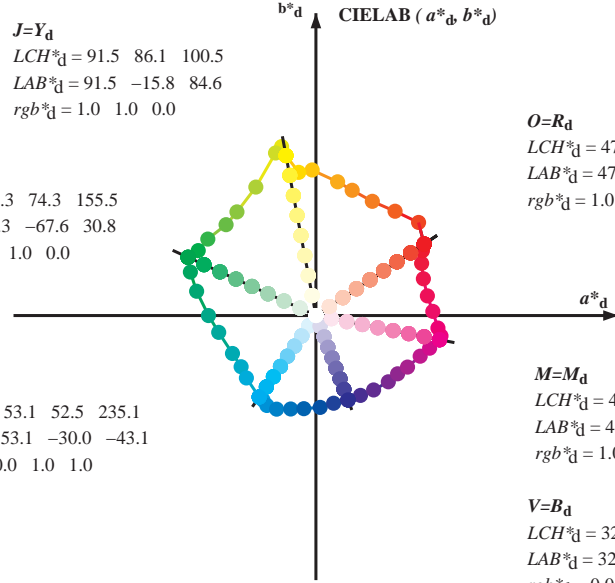


Data of Maximum color M in colorimetric system Laser printer output; separation cmy<sup>6</sup>, D65 for input or output; Six hue angles of the 60 degree standard colours RYGBM<sub>s</sub>:  $h_{ab,ds} = 30.0, 90.0, 150.0, 210.0, 270.0, 330.0$ ;  
 Six hue angles of the device colours RYGBM<sub>d</sub>:  $h_{ab,d} = 33.5, 100.6, 155.5, 235.2, 290.8, 348.9$ ; Six hue angles of the elementary colours RYGBM<sub>e</sub>:  $h_{ab,e} = 25.5, 92.3, 162.2, 217.0, 271.7, 328.6$

$J=Y_d$   
 $LCH^*_d = 91.5 \ 86.1 \ 100.5$   
 $LAB^*_d = 91.5 \ -15.8 \ 84.6$   
 $rgb^*_d = 1.0 \ 1.0 \ 0.0$

$L=G_d$   
 $LCH^*_d = 54.3 \ 74.3 \ 155.5$   
 $LAB^*_d = 54.3 \ -67.6 \ 30.8$   
 $rgb^*_d = 0.0 \ 1.0 \ 0.0$

$C=C_d$   
 $LCH^*_d = 53.1 \ 52.5 \ 235.1$   
 $LAB^*_d = 53.1 \ -30.0 \ -43.1$   
 $rgb^*_d = 0.0 \ 1.0 \ 1.0$



$O=R_d$   
 $LCH^*_d = 47.5 \ 68.6 \ 33.4$   
 $LAB^*_d = 47.5 \ 57.2 \ 37.8$   
 $rgb^*_d = 1.0 \ 0.0 \ 0.0$

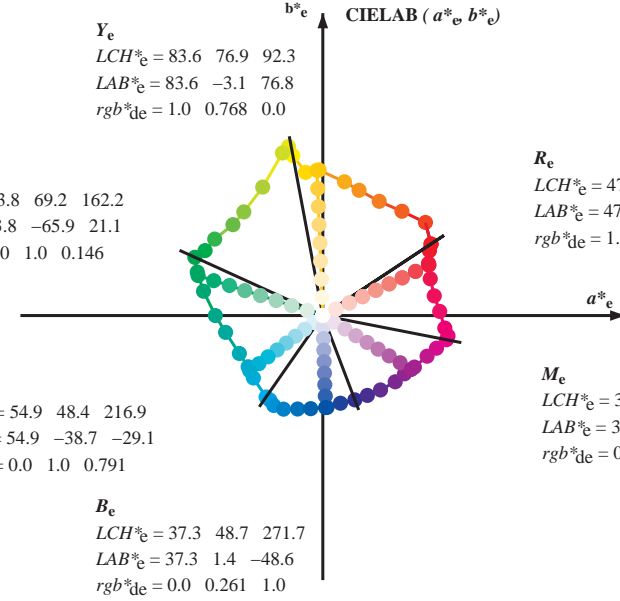
$M=M_d$   
 $LCH^*_d = 48.1 \ 66.6 \ 348.9$   
 $LAB^*_d = 48.1 \ 65.4 \ -12.7$   
 $rgb^*_d = 1.0 \ 0.0 \ 1.0$

$V=B_d$   
 $LCH^*_d = 32.5 \ 47.7 \ 290.8$   
 $LAB^*_d = 32.5 \ 16.9 \ -44.6$   
 $rgb^*_d = 0.0 \ 0.0 \ 1.0$

$Y_e$   
 $LCH^*_e = 83.6 \ 76.9 \ 92.3$   
 $LAB^*_e = 83.6 \ -3.1 \ 76.8$   
 $rgb^*_{de} = 1.0 \ 0.768 \ 0.0$

$G_e$   
 $LCH^*_e = 53.8 \ 69.2 \ 162.2$   
 $LAB^*_e = 53.8 \ -65.9 \ 21.1$   
 $rgb^*_{de} = 0.0 \ 1.0 \ 0.146$

$C_e$   
 $LCH^*_e = 54.9 \ 48.4 \ 216.9$   
 $LAB^*_e = 54.9 \ -38.7 \ -29.1$   
 $rgb^*_{de} = 0.0 \ 1.0 \ 0.791$



$R_e$   
 $LCH^*_e = 47.5 \ 62.1 \ 25.4$   
 $LAB^*_e = 47.5 \ 56.0 \ 26.7$   
 $rgb^*_{de} = 1.0 \ 0.0 \ 0.263$

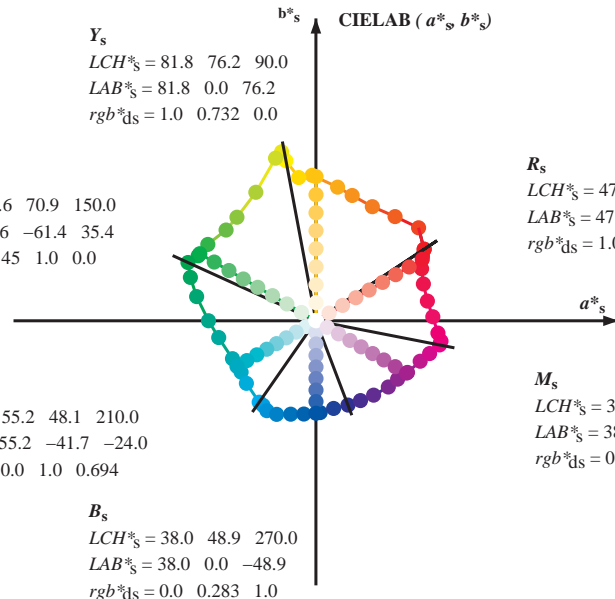
$M_e$   
 $LCH^*_e = 38.5 \ 54.7 \ 328.6$   
 $LAB^*_e = 38.5 \ 46.7 \ -28.5$   
 $rgb^*_{de} = 0.584 \ 0.0 \ 1.0$

$B_e$   
 $LCH^*_e = 37.3 \ 48.7 \ 271.7$   
 $LAB^*_e = 37.3 \ 1.4 \ -48.6$   
 $rgb^*_{de} = 0.0 \ 0.261 \ 1.0$

$Y_s$   
 $LCH^*_s = 81.8 \ 76.2 \ 90.0$   
 $LAB^*_s = 81.8 \ 0.0 \ 76.2$   
 $rgb^*_{ds} = 1.0 \ 0.732 \ 0.0$

$G_s$   
 $LCH^*_s = 57.6 \ 70.9 \ 150.0$   
 $LAB^*_s = 57.6 \ -61.4 \ 35.4$   
 $rgb^*_{ds} = 0.145 \ 1.0 \ 0.0$

$C_s$   
 $LCH^*_s = 55.2 \ 48.1 \ 210.0$   
 $LAB^*_s = 55.2 \ -41.7 \ -24.0$   
 $rgb^*_{ds} = 0.0 \ 1.0 \ 0.694$



$R_s$   
 $LCH^*_s = 47.6 \ 65.0 \ 30.0$   
 $LAB^*_s = 47.6 \ 56.3 \ 32.5$   
 $rgb^*_{ds} = 1.0 \ 0.0 \ 0.157$

$M_s$   
 $LCH^*_s = 38.9 \ 55.3 \ 330.0$   
 $LAB^*_s = 38.9 \ 47.9 \ -27.6$   
 $rgb^*_{ds} = 0.612 \ 0.0 \ 1.0$

$B_s$   
 $LCH^*_s = 38.0 \ 48.9 \ 270.0$   
 $LAB^*_s = 38.0 \ 0.0 \ -48.9$   
 $rgb^*_{ds} = 0.0 \ 0.283 \ 1.0$

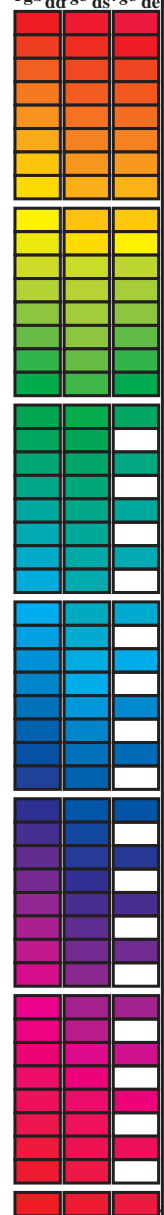
$(a^*_d, b^*_d), (a^*_s, b^*_s), (a^*_e, b^*_e)$   
 $rgb^*_e LCH^*_e LAB^*_e$   
 $h_{ab,s} rgb^*_s$   
 $h_{ab,s} = atan [ r^*_d cos(30) + g^*_d cos(150) ] / [ r^*_d sin(30) + g^*_d sin(150) + b^*_d sin(270) ]$  (1)  
 $h_{ab,s}$   
 $s: h_{ab,s} = 30.0, 90.0, 150.0, 210.0, 270.0, 330.0, 390.0 (i=0,6)$   
 $h_{48ab,sij} = h_{ab,si} + j [h_{ab,si+1} - h_{ab,si}] / 8 (i = 0, 1, \dots, 5; j = 0, 1, \dots, 7)$  (2)  
 $h_{360ab,sij} = h_{ab,si} + j [h_{ab,si+1} - h_{ab,si}] / 60 (i = 0, 1, \dots, 5; j = 0, 1, \dots, 59)$  (3)  
 $h_{ab,e}$   
 $e: h_{ab,e} = 25.5, 92.3, 162.2, 217.0, 271.7, 328.6, 385.5 (i=0,6)$   
 $h_{48ab,eij} = h_{ab,ei} + j [h_{ab,ei+1} - h_{ab,ei}] / 8 (i = 0, 1, \dots, 5; j = 0, 1, \dots, 7)$  (4)  
 $h_{360ab,eij} = h_{ab,ei} + j [h_{ab,ei+1} - h_{ab,ei}] / 60 (i = 0, 1, \dots, 5; j = 0, 1, \dots, 59)$  (5)  
 $h_{ab,d}$   
 $rgb^*_d$

vea archivos semejantes: <http://130.149.60.45/~farbmetrik/SS19/SS19.HTM>  
 información técnica: <http://www.ps.bam.de> o <http://130.149.60.45/~farbmetrik>

TUB matrícula: 20130201-SS19/SS19L0NP.PDF /.PS  
 aplicación para la medida salida de impresora láser, separacióncmy<sup>6</sup> (CMYK)  
 TUB material: code=rh4ta

Data of maximum color M in colorimetric system Laser printer output; separation cmyn6\*, D65 for input or output; Six hue angles of the 60 degree standard colours RYGBM<sub>s</sub>: h<sub>ab,ds</sub> = 30.0, 90.0, 150.0, 210.0, 270.0, 330.0; Six hue angles of the device colours RYGBM<sub>d</sub>: h<sub>ab,d</sub> = 33.5, 100.6, 155.5, 235.2, 290.8, 348.9; Six hue angles of the elementary colours RYGBM<sub>e</sub>: h<sub>ab,e</sub> = 25.5, 92.3, 162.2, 217.0, 271.7, 328.6

Table with 24 columns: h<sub>ab,d</sub>, h<sub>ab,s</sub>, h<sub>ab,e</sub>, r<sub>gb</sub><sup>a</sup>, d<sub>64M</sub>, LAB\*<sub>ddx64M</sub> (x=LabCh), r<sub>gb</sub><sup>a</sup>, d<sub>361M</sub>, LAB\*<sub>ddx361M</sub> (x=LabCh), r<sub>gb</sub><sup>a</sup>, d<sub>361M</sub>, LAB\*<sub>dsx361M</sub> (x=LabCh), r<sub>gb</sub><sup>a</sup>, d<sub>361M</sub>, LAB\*<sub>dex361M</sub> (x=LabCh), LAB\*<sub>dex361M</sub>. Rows 1-393.



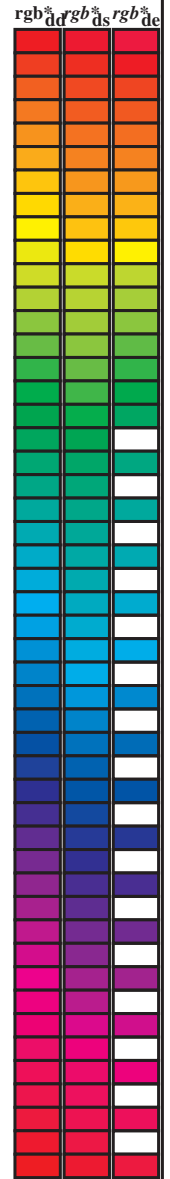
vea archivos semejantes: http://130.149.60.45/~farbmetrik/SS19/SS19.HTM  
información técnica: http://www.ps.bam.de o http://130.149.60.45/~farbmetrik

TUB matrícula: 20130201-SS19/SS19L0NP.PDF /.PS  
aplicación para la medida salida de impresora láser, separacióncmyn6 (CMYK)  
TUB material: code=rh4ta



Data of Maximum color M in colorimetric system Laser printer output; separation cmyn6\*, D65 for input or output; Six hue angles of the 60 degree standard colours RYGBM<sub>s</sub>: h<sub>ab,ds</sub> = 30.0, 90.0, 150.0, 210.0, 270.0, 330.0; Six hue angles of the device colours RYGBM<sub>d</sub>: h<sub>ab,d</sub> = 33.5, 100.6, 155.5, 235.2, 290.8, 348.9; Six hue angles of the elementary colours RYGBM<sub>e</sub>: h<sub>ab,e</sub> = 25.5, 92.3, 162.2, 217.0, 271.7, 328.6

h <sub>ab,d</sub>	h <sub>ab,s</sub>	h <sub>ab,e</sub>	rgb* dd64M	LAB* ddx64M (x=LabCh)	rgb* dex361M	LAB* dex361M
33.4	30.0	25.4	1.0 0.0 0.0	47.5 57.2 37.8 68.6 33.4	1.0 0.0 0.263 47.6	56.1 26.7 62.1 25
42.1	37.5	33.8	1.0 0.125 0.0	51.9 54.3 49.2 73.2 42.1	1.0 0.0 0.012 47.6	57.2 37.5 68.4 33
52.8	45.0	42.1	1.0 0.25 0.0	58.2 41.8 55.1 69.2 52.8	1.0 0.125 0.0	52.0 54.3 49.2 73.3 42
63.7	52.5	50.5	1.0 0.375 0.0	64.6 29.8 60.4 67.3 63.7	1.0 0.216 0.0	56.6 45.2 53.9 70.3 49
73.8	60.0	58.8	1.0 0.5 0.0	70.5 19.2 66.2 69.0 73.8	1.0 0.32 0.0	61.8 35.2 58.4 68.2 58
80.7	67.5	67.2	1.0 0.625 0.0	74.9 11.4 70.7 71.6 80.7	1.0 0.412 0.0	66.4 26.9 62.3 67.9 66
91.5	75.0	75.6	1.0 0.75 0.0	82.9 -2.0 76.9 77.0 91.5	1.0 0.532 0.0	71.6 17.3 67.5 69.7 75
96.8	82.5	83.9	1.0 0.875 0.0	87.6 -9.0 75.7 76.3 96.8	1.0 0.655 0.0	76.9 8.4 72.5 73.0 83
100.5	90.0	92.3	1.0 1.0 0.0	91.5 -15.8 84.6 86.1 100.5	1.0 0.769 0.0	83.7 -3.0 76.8 76.9 92
101.4	97.5	101.0	0.875 1.0 0.0	92.8 -18.1 89.4 91.2 101.4	1.0 0.996 0.0	91.5 -15.5 84.4 85.8 100
103.9	105.0	109.7	0.75 1.0 0.0	90.1 -21.3 86.0 88.6 103.9	0.684 1.0 0.0	84.7 -27.5 76.7 81.5 109
115.0	112.5	118.5	0.625 1.0 0.0	79.9 -31.7 67.9 75.0 115.0	0.595 1.0 0.0	77.8 -34.4 65.0 73.6 117
127.3	120.0	127.2	0.5 1.0 0.0	70.9 -41.7 54.8 68.9 127.3	0.501 1.0 0.0	71.0 -41.6 54.9 68.9 127
134.7	127.5	136.0	0.375 1.0 0.0	66.5 -47.5 48.0 67.6 134.7	0.366 1.0 0.0	66.2 -48.2 47.6 67.8 135
144.7	135.0	144.7	0.25 1.0 0.0	60.6 -57.2 40.4 70.1 144.7	0.25 1.0 0.0	60.6 -57.1 40.5 70.1 144
151.0	142.5	153.4	0.125 1.0 0.0	57.0 -62.2 34.4 71.1 151.0	0.073 1.0 0.0	55.9 -64.4 33.0 72.5 152
155.5	150.0	162.2	0.0 1.0 0.0	54.3 -67.6 30.8 74.3 155.5	0.0 1.0 0.147 53.8	-65.9 21.1 69.3 162
160.8	157.5	169.0	0.0 1.0 0.125 53.8	-66.4 23.0 70.2 160.8	0.0 1.0 0.251 53.8	-63.0 12.7 64.4 168
168.5	165.0	175.9	0.0 1.0 0.25 53.7	-63.1 12.8 64.4 168.5	0.0 1.0 0.331 54.4	-59.3 4.2 59.5 175
179.9	172.5	182.7	0.0 1.0 0.375 54.7	-56.8 0.0 56.8 179.9	0.0 1.0 0.405 54.8	-55.6 -2.1 55.7 182
189.8	180.0	189.6	0.0 1.0 0.5 55.0	-51.4 -8.9 52.2 189.8	0.0 1.0 0.497 55.0	-51.5 -8.6 52.3 189
204.4	187.5	196.4	0.0 1.0 0.625 55.3	-44.1 -20.0 48.5 204.4	0.0 1.0 0.553 55.2	-48.6 -13.9 50.7 195
214.4	195.0	203.2	0.0 1.0 0.75 55.2	-39.5 -27.1 47.9 214.4	0.0 1.0 0.615 55.3	-44.7 -19.2 48.8 203
221.9	202.5	210.1	0.0 1.0 0.875 54.4	-36.7 -33.0 49.4 221.9	0.0 1.0 0.69 55.3	-41.8 -23.8 48.2 209
235.1	210.0	216.9	0.0 1.0 1.0 53.1	-30.0 -43.1 52.5 235.1	0.0 1.0 0.792 55.0	-38.6 -29.0 48.4 216
237.9	217.5	223.8	0.0 0.875 1.0 53.1	-27.9 -44.7 52.7 237.9	0.0 1.0 0.888 54.3	-36.1 -34.1 49.8 223
241.3	225.0	230.6	0.0 0.75 1.0 52.9	-25.9 -47.5 54.1 241.3	0.0 1.0 0.957 53.6	-32.5 -39.7 51.5 230
247.2	232.5	237.5	0.0 0.625 1.0 50.5	-20.8 -49.5 53.7 247.2	0.0 0.916 1.0 53.1	-28.6 -44.1 52.7 237
254.9	240.0	244.3	0.0 0.5 1.0 46.1	-13.3 -49.4 51.1 254.9	0.0 0.686 1.0 51.7	-23.3 -48.5 54.0 244
262.6	247.5	251.2	0.0 0.375 1.0 41.4	-6.3 -49.2 49.6 262.6	0.0 0.568 1.0 48.6	-17.2 -49.5 52.6 250
272.6	255.0	258.0	0.0 0.25 1.0 36.8	2.2 -48.5 48.6 272.6	0.0 0.449 1.0 44.2	-10.4 -49.4 50.6 258
281.4	262.5	264.8	0.0 0.125 1.0 35.0	9.4 -46.3 47.3 281.4	0.0 0.353 1.0 40.6	-4.7 -49.2 49.5 264
290.8	270.0	271.7	0.0 0.0 1.0 32.5	16.9 -44.6 47.7 290.8	0.0 0.261 1.0 37.3	1.5 -48.6 48.7 271
299.2	277.5	278.8	0.125 0.0 1.0 31.6	23.6 -42.2 48.4 299.2	0.0 0.169 1.0 35.7	7.0 -47.2 47.8 278
307.8	285.0	285.9	0.25 0.0 1.0 31.0	30.5 -39.3 49.8 307.8	0.0 0.065 1.0 33.9	13.1 -45.6 47.5 285
317.5	292.5	293.0	0.375 0.0 1.0 34.2	38.2 -35.0 51.8 317.5	0.026 0.0 1.0 32.4	18.4 -44.1 47.9 292
324.4	300.0	300.1	0.5 0.0 1.0 37.2	43.1 -30.8 53.0 324.4	0.139 0.0 1.0 31.5	24.4 -41.9 48.6 300
330.6	307.5	307.2	0.625 0.0 1.0 39.1	48.4 -27.2 55.6 330.6	0.235 0.0 1.0 31.1	29.8 -39.7 49.7 306
338.7	315.0	314.3	0.75 0.0 1.0 41.8	55.1 -21.4 59.1 338.7	0.335 0.0 1.0 33.2	35.8 -36.5 51.2 314
343.9	322.5	321.4	0.875 0.0 1.0 45.6	60.1 -17.3 62.6 343.9	0.439 0.0 1.0 35.8	40.8 -32.9 52.5 321
348.9	330.0	328.6	1.0 0.0 1.0 48.1	65.4 -12.7 66.6 348.9	0.584 0.0 1.0 38.5	46.8 -28.4 54.8 328
350.7	337.5	335.7	1.0 0.0 0.875 49.5	66.1 -10.7 67.0 350.7	0.696 0.0 1.0 40.7	52.3 -24.0 57.6 335
354.2	345.0	342.8	1.0 0.0 0.75 49.3	64.5 -6.5 64.8 354.2	0.848 0.0 1.0 44.9	59.1 -18.2 61.9 342
361.9	352.5	349.9	1.0 0.0 0.625 48.0	61.8 2.1 61.8 361.9	0.910 0.0 1.0 48.6	65.6 -12.1 66.8 349
370.0	360.0	357.0	1.0 0.0 0.5 47.8	58.9 10.4 59.9 370.0	1.0 0.0 0.828 49.5	65.6 -9.0 66.2 352
378.9	367.5	364.1	1.0 0.0 0.375 47.4	56.8 19.5 60.0 378.9	1.0 0.0 0.659 48.4	62.7 -0.1 62.7 359
386.2	375.0	371.2	1.0 0.0 0.25 47.5	55.9 27.5 62.3 386.2	1.0 0.0 0.519 47.8	59.5 9.2 60.2 368
391.3	382.5	378.3	1.0 0.0 0.125 47.6	56.3 34.2 65.9 391.3	1.0 0.0 0.408 47.5	57.6 17.1 60.0 376
393.4	390.0	385.4	1.0 0.0 0.0 47.5	57.2 37.8 68.6 393.4	1.0 0.0 0.263 47.6	56.1 26.7 62.1 385



vea archivos semejantes: http://130.149.60.45/~farbmetrik/SS19/SS19L0NP.PDF /.PS; salida de transferencia  
información técnica: http://www.ps.bam.de o http://130.149.60.45/~farbmetrik

TUB matrícula: 20130201-SS19/SS19L0NP.PDF /.PS  
aplicación para la medida salida de impresora láser, separación cmyn6 (CMYK)  
TUB material: code=rh4tra

Data of Maximum color M in colorimetric system Laser printer output; separation cmyn6\*, D65 for input or output; Six hue angles of the 60 degree standard colours RYGBM<sub>c</sub>: h<sub>ab,ds</sub> = 30.0, 90.0, 150.0, 210.0, 270.0, 330.0;

Six hue angles of the device colours RYGBM<sub>d</sub>: h<sub>ab,d</sub> = 33.5, 100.6, 155.5, 235.2, 290.8, 348.9; Six hue angles of the elementary colours RYGBM<sub>e</sub>: h<sub>ab,e</sub> = 25.5, 92.3, 162.2, 217.0, 271.7, 328.6

Table with 24 columns: h\_ab,d, h\_ab,s, h\_ab,e, rgbb\*dd361M, LAB\*ddx361Mi (x=LabCh), R\_d, rgbb\*ds361Mi, LAB\*dsx361Mi (x=LabCh), R\_s, rgbb\*dd361Mi, LAB\*de361Mi, LAB\*dex361Mi (x=LabCh), R\_c, rgbb\*dd361Mi, rgbb\*dd, rgbb\*ds, rgbb\*de. Rows 33-75 and -269/-268.

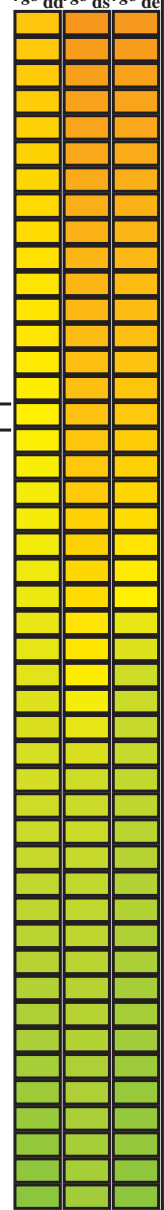
vea archivos semejantes: http://130.149.60.45/~farbmetrik/SS19/SS19.HTM  
información técnica: http://www.ps.bam.de o http://130.149.60.45/~farbmetrik

TUB matrícula: 20130201-SS19/SS19L0NP.PDF /.PS  
aplicación para la medida salida de impresora láser, separacióncmyn6 (CMYK)  
TUB material: code=rh4ta

Data of Maximum color M in colorimetric system Laser printer output; separation cmy<sup>6</sup>\*, D65 for input or output; Six hue angles of the 60 degree standard colours RYGBM<sub>s</sub>: h<sub>ab,ds</sub> = 30.0, 90.0, 150.0, 210.0, 270.0, 330.0;

Six hue angles of the device colours RYGBM<sub>d</sub>: h<sub>ab,d</sub> = 33.5, 100.6, 155.5, 235.2, 290.8, 348.9; Six hue angles of the elementary colours RYGBM<sub>e</sub>: h<sub>ab,e</sub> = 25.5, 92.3, 162.2, 217.0, 271.7, 328.6

Table with columns for colorimetric data: h<sub>ab,d</sub>, h<sub>ab,s</sub>, h<sub>ab,e</sub>, rgbb\*dd361M, LAB\*ddx361Mi (x=LabCh), rgbb\*ds361Mi, LAB\*dsx361Mi (x=LabCh), rgbb\*dd361Mi, rgbb\*de361Mi, LAB\*dex361Mi (x=LabCh), rgbb\*dd361Mi. Rows 1-127.



vea archivos semejantes: http://130.149.60.45/~farbmetrik/SS19/SS19.HTM  
información técnica: http://www.ps.bam.de o http://130.149.60.45/~farbmetrik

TUB matrícula: 20130201-SS19/SS19L0NP.PDF /.PS  
aplicación para la medida salida de impresora láser, separacióncmy<sup>6</sup> (CMYK)  
TUB material: code=rh4ta

Data of Maximum color M in colorimetric system Laser printer output; separation cmyn6\*, D65 for input or output; Six hue angles of the 60 degree standard colours RYGBM<sub>s</sub>: h<sub>ab,ds</sub> = 30.0, 90.0, 150.0, 210.0, 270.0, 330.0;

Six hue angles of the device colours RYGBM<sub>d</sub>: h<sub>ab,d</sub> = 33.5, 100.6, 155.5, 235.2, 290.8, 348.9; Six hue angles of the elementary colours RYGBM<sub>e</sub>: h<sub>ab,e</sub> = 25.5, 92.3, 162.2, 217.0, 271.7, 328.6

Table with 18 columns: h<sub>ab,d</sub>, h<sub>ab,s</sub>, h<sub>ab,e</sub>, r<sub>gb</sub>\*\_dd361M, LAB\*\_ddx361Mi (x=LabCh), r<sub>gb</sub>\*\_ds361Mi, LAB\*\_dsx361Mi (x=LabCh), r<sub>gb</sub>\*\_dd361Mi, LAB\*\_de361Mi, LAB\*\_dex361Mi (x=LabCh), r<sub>gb</sub>\*\_dd361Mi, LAB\*\_dd361Mi, r<sub>gb</sub>\*\_dd, r<sub>gb</sub>\*\_ds, r<sub>gb</sub>\*\_de. Rows 127-168.

vea archivos semejantes: http://130.149.60.45/~farbmetrik/SS19/SS19.HTM  
información técnica: http://www.ps.bam.de o http://130.149.60.45/~farbmetrik

TUB matrícula: 20130201-SS19/SS19L0NP.PDF /.PS  
aplicación para la medida salida de impresora láser, separacióncmyn6 (CMYK)  
TUB material: code=rh4ta

Data of Maximum color M in colorimetric system Laser printer output; separation cmy<sup>6</sup>\*, D65 for input or output; Six hue angles of the 60 degree standard colours RY<sup>6</sup>CB<sub>6</sub>M<sub>6</sub>; h<sub>ab,ds</sub> = 30.0, 90.0, 150.0, 210.0, 270.0, 330.0;

Six hue angles of the device colours RY<sup>6</sup>CB<sub>6</sub>M<sub>6</sub>d: h<sub>ab,d</sub> = 33.5, 100.6, 155.5, 235.2, 290.8, 348.9; Six hue angles of the elementary colours RY<sup>6</sup>CB<sub>6</sub>M<sub>6</sub>: h<sub>ab,e</sub> = 25.5, 92.3, 162.2, 217.0, 271.7, 328.6

Table with columns for device colors (h\_ab,d, h\_ab,s, h\_ab,e, rgb\*, dd361M, LAB\*, ddx361Mi (x=LabCh)) and elementary colors (rgb\*, dd361Mi, LAB\*, dex361Mi (x=LabCh)). Rows 168-235.

vea archivos semejantes: http://130.149.60.45/~farbmetrik/SS19/SS19.HTM  
información técnica: http://www.ps.bam.de o http://130.149.60.45/~farbmetrik

TUB matrícula: 20130201-SS19/SS19L0NP.PDF /.PS  
aplicación para la medida salida de impresora láser, separacióncmy<sup>6</sup> (CMYK)  
TUB material: code=rh4ta

Data of Maximum color M in colorimetric system Laser printer output; separation cmyn6\*, D65 for input or output; Six hue angles of the 60 degree standard colours RYGBM<sub>s</sub>: h<sub>ab,ds</sub> = 30.0, 90.0, 150.0, 210.0, 270.0, 330.0;

Six hue angles of the device colours RYGBM<sub>d</sub>: h<sub>ab,d</sub> = 33.5, 100.6, 155.5, 235.2, 290.8, 348.9; Six hue angles of the elementary colours RYGBM<sub>e</sub>: h<sub>ab,e</sub> = 25.5, 92.3, 162.2, 217.0, 271.7, 328.6

Table with columns for colorimetric data: h<sub>ab,d</sub>, h<sub>ab,s</sub>, h<sub>ab,e</sub>, r<sub>gb</sub><sup>\*</sup>, d<sub>s361M</sub>, LAB<sup>\*</sup>, d<sub>dx361Mi</sub> (x=LabCh), C<sub>d</sub>, r<sub>gb</sub><sup>\*</sup>, d<sub>ds361Mi</sub>, LAB<sup>\*</sup>, d<sub>dsx361Mi</sub> (x=LabCh), 210C<sub>s</sub>, r<sub>gb</sub><sup>\*</sup>, d<sub>dd361Mi</sub>, r<sub>gb</sub><sup>\*</sup>, d<sub>de361Mi</sub>, LAB<sup>\*</sup>, d<sub>dex361Mi</sub> (x=LabCh), 216C<sub>c</sub>, r<sub>gb</sub><sup>\*</sup>, d<sub>dd361Mi</sub>, r<sub>gb</sub><sup>\*</sup>, d<sub>ds361Mi</sub>, r<sub>gb</sub><sup>\*</sup>, d<sub>de361Mi</sub>. Rows 235-272.

vea archivos semejantes: http://130.149.60.45/~farbmetrik/SS19/SS19.HTM  
información técnica: http://www.ps.bam.de o http://130.149.60.45/~farbmetrik

TUB matrícula: 20130201-SS19/SS19L0NP.PDF /.PS  
aplicación para la medida salida de impresora láser, separacióncmyn6 (CMYK)  
TUB material: code=rh4ta



Data of Maximum color M in colorimetric system Laser printer output; separation cmyn6\*, D65 for input or output; Six hue angles of the 60 degree standard colours RYGBM<sub>s</sub>: h<sub>ab,ds</sub> = 30.0, 90.0, 150.0, 210.0, 270.0, 330.0;

Six hue angles of the device colours RYGBM<sub>d</sub>: h<sub>ab,d</sub> = 33.5, 100.6, 155.5, 235.2, 290.8, 348.9; Six hue angles of the elementary colours RYGBM<sub>e</sub>: h<sub>ab,e</sub> = 25.5, 92.3, 162.2, 217.0, 271.7, 328.6

Table with 24 columns: h<sub>ab,d</sub>, h<sub>ab,s</sub>, h<sub>ab,e</sub>, r<sub>gb</sub>\*\_dd361M, LAB\*<sub>d</sub> (x=LabCh), r<sub>gb</sub>\*\_ds361Mi, LAB\*<sub>s</sub> (x=LabCh), r<sub>gb</sub>\*\_de361Mi, LAB\*<sub>e</sub> (x=LabCh), r<sub>gb</sub>\*\_dd361Mi, LAB\*<sub>d</sub> (x=LabCh), r<sub>gb</sub>\*\_ds361Mi, LAB\*<sub>s</sub> (x=LabCh), r<sub>gb</sub>\*\_de361Mi, LAB\*<sub>e</sub> (x=LabCh), r<sub>gb</sub>\*\_dd361Mi, r<sub>gb</sub>\*\_dd, r<sub>gb</sub>\*\_ds, r<sub>gb</sub>\*\_de. Rows 324-354.

vea archivos semejantes: http://130.149.60.45/~farbmetrik/SS19/SS19.HTM  
información técnica: http://www.ps.bam.de o http://130.149.60.45/~farbmetrik

TUB matrícula: 20130201-SS19/SS19L0NP.PDF /.PS  
aplicación para la medida salida de impresora láser, separación cmyn6 (CMYK)  
TUB material: code=rh4ta



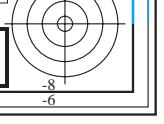
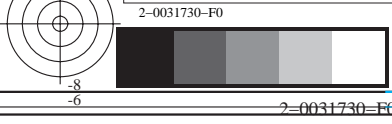


Table with columns: n/fj, HIC\*Fa, rgb\_Fa, icf\_Fa, hsi\_Fa, rgb\*Fa, LabCh\*Fa, DE\*Fa, hsiMd, rgb\*Md, LabCh\*Md. It contains multiple rows of color and density data for various printing conditions.

delta E\* = 2.9

TUB matrícula: 20130201-SS19/SS19L0NP.PDF /.PS aplicación para la medida salida de impresora Láser, separacióncmykn6 (CMYK) TUB material: code=rh4ta

vea archivos semejantes: http://130.149.60.45/~farbmetrik/SS19/SS19.HTM información técnica: http://www.ps.bam.de o http://130.149.60.45/~farbmetrik

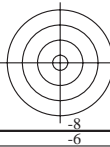


vea archivos semejantes: <http://130.149.60.45/~farbmetrik/SS19/SS19.HTM>  
información técnica: <http://www.ps.bam.de> o <http://130.149.60.45/~farbmetrik>

TUB matrícula: 20130201-SS19/SS19L0NP.PDF /.PS  
aplicación para la medida salida de impresora láser, separacióncmykn6 (CMYK)

Table with 30 columns: n/fj, HIC\*Fa, rgb\_Fa, icf\_Fa, hsi\_Fa, rgb\*Fa, LabCh\*Fa, and 12 columns for DE\*Fa, hsiMd, rgb\*Md, LabCh\*Md. The table contains numerical data for various color patches and their measurements.

delta E\* = 5.3



vea archivos semejantes: <http://130.149.60.45/~farbmetrik/SS19/SS19.HTM>  
información técnica: <http://www.ps.bam.de> o <http://130.149.60.45/~farbmetrik>

Table with 8 columns of color data (HIC, rgb, icl, hsi, LabCh, DE, hsi, rgb, LabCh) and 80 rows of color patches. Includes a 'delta E\* = 10.8' label at the bottom right of the table area.

gráfico TUB-SS19; 1080 colores estándar  
colores y diferencia en color,  $\Delta E^*$ , 3D=0, de=0, cmyk

entrada:  $rgb/cmyk \rightarrow rgb_d$   
salida: transfiera a  $cmyk_d$

TUB matrícula: 20130201-SS19/SS19L0NP.PDF /.PS  
aplicación para la medida salida de impresora láser, separacióncmykn6 (CMYK)

TUB material: code=rh4ta

Table with 10 columns of colorimetric data (HIC, rgb, icf, hsi, LabCh, etc.) and 100 rows of color patches (n 81-180). Includes a 'delta E\*' = 8.5' label at the bottom right of the table area.

gráfico TUB-SS19; 1080 colores estándar colores y diferencia en color, ΔE\*, 3D=0, de=0, cmyk

entrada: rgb/cmyk -> rgb salida: transferencia a cmyk

vea archivos semejantes: http://130.149.60.45/~farbmetrik/SS19/SS19.HTM información técnica: http://www.ps.bam.de o http://130.149.60.45/~farbmetrik

TUB matrícula: 20130201-SS19/SS19L0NP.PDF /.PS aplicación para la medida salida de impresora láser, separacióncmykn6 (CMYK) TUB material: code=rh4ta

vea archivos semejantes: http://130.149.60.45/~farbmetrik/SS19/SS19.HTM  
información técnica: http://www.ps.bam.de o http://130.149.60.45/~farbmetrik

Table with columns: n, HIC\*Fa, rgb\_Fa, icf\_Fa, hsi\_Fa, rgb\*Fa, LabCh\*Fa, DE\*Fa, hsi\_Md, rgb\*Ma, LabCh\*Ma. Rows 162-242. Delta E\*ab = 8.0

gráfico TUB-SS19: 1080 colores estándar  
colores y diferencia en color,  $\Delta E^*$ , 3D=0, de=0, cmyk

entrada:  $rgb/cmyk \rightarrow rgb_d$   
salida: transfiera a  $cmyk_d$

TUB matrícula: 20130201-SS19/SS19L0NP.PDF /.PS  
aplicación para la medida salida de impresora láser, separación cmykn6 (CMYK)

TUB material: code=rh4ta





Table with 15 columns: n, HIC\*Fa, rgb\_Fa, icf\_Fa, hsi\_Fa, rgb\*Fa, LabCh\*Fa, rgb\*Fa, LabCh\*Fa, DE\*Fa, hsi\_Md, rgb\*Md, LabCh\*Md. It contains color calibration data for various colorimetric systems and media.

delta E\* = 7.3

gráfico TUB-SS19; 1080 colores estándar colores y diferencia en color, ΔE\*, 3D=0, de=0, cmyk

entrada: rgb/cmyk -> rgb salida: transfiera a cmyk

vea archivos semejantes: http://130.149.60.45/~farbmetrik/SS19/SS19.HTM información técnica: http://www.ps.bam.de o http://130.149.60.45/~farbmetrik

TUB matrícula: 20130201-SS19/SS19L0NP.PDF /.PS aplicación para la medida salida de impresora láser, separacióncmykn6 (CMYK) TUB material: code=rh4ta





Table with 10 columns of colorimetric data (n, HIC\*Fa, rgb\*Fa, icf\*Fa, hsi\*Fa, rgb\*\*Fa, LabCh\*Fa, rgbb\*\*Fa, LabCh\*\*Fa, DE\*Fa, hsiMd, rgbb\*\*Md, LabCh\*\*Md) and 100 rows of color patches.

delta E\* = 6.2

gráfico TUB-SS19; 1080 colores estándar colores y diferencia en color, ΔE\*, 3D=0, de=0, cmyk

entrada: rgb/cmyk -> rgbD salida: transfiera a cmykD

vea archivos semejantes: http://130.149.60.45/~farbmetrik/SS19/SS19.HTM información técnica: http://www.ps.bam.de o http://130.149.60.45/~farbmetrik

TUB matrícula: 20130201-SS19/SS19L0NP.PDF /.PS aplicación para la medida salida de impresora láser, separacióncmykn6 (CMYK) TUB material: code=rh4ta

Table with columns for color names (e.g., R00Y\_087\_087a), primary color values (HIC, rgb, iet, hsi, LabCh), and secondary color values (rgb, LabCh, DE, hsi, rgb, LabCh). Includes a 'delta E\*' value at the bottom right.

gráfico TUB-SS19; 1080 colores estándar colores y diferencia en color, ΔE\*, 3D=0, de=0, cmyk

entrada: rgb/cmyk -> rgb salida: transfiera a cmyk

vea archivos semejantes: http://130.149.60.45/~farbmetrik/SS19/SS19.HTM información técnica: http://www.ps.bam.de o http://130.149.60.45/~farbmetrik

TUB matrícula: 20130201-SS19/SS19L0NP.PDF /.PS aplicación para la medida salida de impresora Láser, separacióncmykn6 (CMYK) TUB material: code=rha4ta

Table with 28 columns: n, HIC\*Fa, rgb\_Fa, icf\_Fa, hsi\_Fa, rgb\*Fa, LabCh\*Fa, rgb\*\*Fa, LabCh\*\*Fa, DE\*Fa, hsi\_Md, rgb\*\*Md, LabCh\*\*Md. Rows 648-728. Includes a 'delta E\*\* = 5.3' label at the bottom right of the table area.

gráfico TUB-SS19: 1080 colores estándar colores y diferencia en color, ΔE\*, 3D=0, de=0, cmyk

entrada: rgb/cmyk -> rgbΔ salida: transfiera a cmykΔ

vea archivos semejantes: http://130.149.60.45/~farbmetrik/SS19/SS19.HTM información técnica: http://www.ps.bam.de o http://130.149.60.45/~farbmetrik

TUB matrícula: 20130201-SS19/SS19L0NP.PDF /.PS aplicación para la medida salida de impresora láser, separacióncmykn6 (CMYK) TUB material: code=rh4ta



Table with 16 columns: n, HIC\*Fa, rgb\_Fa, icf\_Fa, hsi\_Fa, rgb\*Fa, LabCh\*Fa, rgb\*Fa, LabCh\*Fa, DE\*Fa, hsi\_Ma, rgb\*Ma, LabCh\*Ma. Contains 80 rows of color calibration data.

delta E\* = 7.8

2-0032830-FO

SS190-7N, 2933-F

gráfico TUB-SS19; 1080 colores estándar colores y diferencia en color, ΔE\*, 3D=0, de=0, cmyk

entrada: rgb/cmyk -> rgb salida: transfiera a cmyk

vea archivos semejantes: http://130.149.60.45/~farbmetrik/SS19/SS19.HTM información técnica: http://www.ps.bam.de o http://130.149.60.45/~farbmetrik

TUB matrícula: 20130201-SS19/SS19L0NP.PDF /.PS aplicación para la medida salida de impresora láser, separacióncmykn6 (CMYK) TUB material: code=rh4ta

Table with 15 columns: n, HIC\*Fa, rgb\*Fa, icf\*Fa, hsi\*Fa, rgb\*Fa, LabCh\*Fa, rgb\*Fa, LabCh\*Fa, DE\*Fa, hsi\*Fa, rgb\*Fa, LabCh\*Fa. Rows 810-890. Includes a 'delta E\*' = 9.2' label at the bottom right of the table area.

gráfico TUB-SS19; 1080 colores estándar colores y diferencia en color, ΔE\*, 3D=0, de=0, cmyk

entrada: rgb/cmyk -> rgb salida: transfiera a cmyk

vea archivos semejantes: http://130.149.60.45/~farbmetrik/SS19/SS19.HTM información técnica: http://www.ps.bam.de o http://130.149.60.45/~farbmetrik

TUB matrícula: 20130201-SS19/SS19L0NP.PDF /.PS aplicación para la medida salida de impresora láser, separacióncmykn6 (CMYK) TUB material: code=rh4ta



vea archivos semejantes: <http://130.149.60.45/~farbmetrik/SS19/SS19.HTM>  
información técnica: <http://www.ps.bam.de> o <http://130.149.60.45/~farbmetrik>

Table with columns: n, HIC\*Fa, rgb\_Fa, icf\_Fa, hsi\_Fa, rgb\*Fa, LabCh\*Fa, rgb\*Fa, LabCh\*Fa, DE\*Fa, hsi\_Md, rgb\*Md, LabCh\*Md. It contains 97 rows of color calibration data for various color patches.

2-0033030-FO

SS190-7N, 31-33-F

delta E\* = 6.7

gráfico TUB-SS19: 1080 colores estándar  
colores y diferencia en color, ΔE\*, 3D=0, de=0, cmyk

entrada: rgb/cmyk -> rgbd  
salida: transfiera a cmyk\_d

2-0033030-FO

TUB matrícula: 20130201-SS19/SS19L0NP.PDF /.PS  
aplicación para la medida salida de impresora láser, separacióncmykn6 (CMYK)

TUB material: code=rh4ta

n	HIC*Fa	rgb_Fa	ict_Fa	hsi_Fa	rgb*Fa	LabCh*Fa	rgb*Fa	LabCh*Fa	DE*Fa	hsiMd	rgb*Md	LabCh*Md
972	NW_000a	0.0	0.0	0.0	0.0	0.0	0.0	0.0	0.0	0.0	0.0	0.0
973	NW_012a	0.125	0.125	0.125	0.125	0.125	0.125	0.125	0.0	0.0	0.0	0.0
974	NW_025a	0.25	0.25	0.25	0.25	0.25	0.25	0.25	0.0	0.0	0.0	0.0
975	NW_037a	0.375	0.375	0.375	0.375	0.375	0.375	0.375	0.0	0.0	0.0	0.0
976	NW_050a	0.5	0.5	0.5	0.5	0.5	0.5	0.5	0.0	0.0	0.0	0.0
977	NW_062a	0.625	0.625	0.625	0.625	0.625	0.625	0.625	0.0	0.0	0.0	0.0
978	NW_075a	0.75	0.75	0.75	0.75	0.75	0.75	0.75	0.0	0.0	0.0	0.0
979	NW_087a	0.875	0.875	0.875	0.875	0.875	0.875	0.875	0.0	0.0	0.0	0.0
980	NW_100a	1.0	1.0	1.0	1.0	1.0	1.0	1.0	0.0	0.0	0.0	0.0
981	NW_000a	0.0	0.0	0.0	0.0	0.0	0.0	0.0	0.0	0.0	0.0	0.0
982	NW_012a	0.125	0.125	0.125	0.125	0.125	0.125	0.125	0.0	0.0	0.0	0.0
983	NW_025a	0.25	0.25	0.25	0.25	0.25	0.25	0.25	0.0	0.0	0.0	0.0
984	NW_037a	0.375	0.375	0.375	0.375	0.375	0.375	0.375	0.0	0.0	0.0	0.0
985	NW_050a	0.5	0.5	0.5	0.5	0.5	0.5	0.5	0.0	0.0	0.0	0.0
986	NW_062a	0.625	0.625	0.625	0.625	0.625	0.625	0.625	0.0	0.0	0.0	0.0
987	NW_075a	0.75	0.75	0.75	0.75	0.75	0.75	0.75	0.0	0.0	0.0	0.0
988	NW_087a	0.875	0.875	0.875	0.875	0.875	0.875	0.875	0.0	0.0	0.0	0.0
989	NW_100a	1.0	1.0	1.0	1.0	1.0	1.0	1.0	0.0	0.0	0.0	0.0
990	NW_000a	0.0	0.0	0.0	0.0	0.0	0.0	0.0	0.0	0.0	0.0	0.0
991	NW_012a	0.125	0.125	0.125	0.125	0.125	0.125	0.125	0.0	0.0	0.0	0.0
992	NW_025a	0.25	0.25	0.25	0.25	0.25	0.25	0.25	0.0	0.0	0.0	0.0
993	NW_037a	0.375	0.375	0.375	0.375	0.375	0.375	0.375	0.0	0.0	0.0	0.0
994	NW_050a	0.5	0.5	0.5	0.5	0.5	0.5	0.5	0.0	0.0	0.0	0.0
995	NW_062a	0.625	0.625	0.625	0.625	0.625	0.625	0.625	0.0	0.0	0.0	0.0
996	NW_075a	0.75	0.75	0.75	0.75	0.75	0.75	0.75	0.0	0.0	0.0	0.0
997	NW_087a	0.875	0.875	0.875	0.875	0.875	0.875	0.875	0.0	0.0	0.0	0.0
998	NW_100a	1.0	1.0	1.0	1.0	1.0	1.0	1.0	0.0	0.0	0.0	0.0
999	NW_000a	0.0	0.0	0.0	0.0	0.0	0.0	0.0	0.0	0.0	0.0	0.0
1000	NW_012a	0.125	0.125	0.125	0.125	0.125	0.125	0.125	0.0	0.0	0.0	0.0
1001	NW_025a	0.25	0.25	0.25	0.25	0.25	0.25	0.25	0.0	0.0	0.0	0.0
1002	NW_037a	0.375	0.375	0.375	0.375	0.375	0.375	0.375	0.0	0.0	0.0	0.0
1003	NW_050a	0.5	0.5	0.5	0.5	0.5	0.5	0.5	0.0	0.0	0.0	0.0
1004	NW_062a	0.625	0.625	0.625	0.625	0.625	0.625	0.625	0.0	0.0	0.0	0.0
1005	NW_075a	0.75	0.75	0.75	0.75	0.75	0.75	0.75	0.0	0.0	0.0	0.0
1006	NW_087a	0.875	0.875	0.875	0.875	0.875	0.875	0.875	0.0	0.0	0.0	0.0
1007	NW_100a	1.0	1.0	1.0	1.0	1.0	1.0	1.0	0.0	0.0	0.0	0.0
1008	NW_000a	0.0	0.0	0.0	0.0	0.0	0.0	0.0	0.0	0.0	0.0	0.0
1009	NW_006a	0.066	0.066	0.066	0.066	0.066	0.066	0.066	0.0	0.0	0.0	0.0
1010	NW_013a	0.133	0.133	0.133	0.133	0.133	0.133	0.133	0.0	0.0	0.0	0.0
1011	NW_020a	0.2	0.2	0.2	0.2	0.2	0.2	0.2	0.0	0.0	0.0	0.0
1012	NW_026a	0.266	0.266	0.266	0.266	0.266	0.266	0.266	0.0	0.0	0.0	0.0
1013	NW_033a	0.333	0.333	0.333	0.333	0.333	0.333	0.333	0.0	0.0	0.0	0.0
1014	NW_040a	0.4	0.4	0.4	0.4	0.4	0.4	0.4	0.0	0.0	0.0	0.0
1015	NW_046a	0.466	0.466	0.466	0.466	0.466	0.466	0.466	0.0	0.0	0.0	0.0
1016	NW_053a	0.533	0.533	0.533	0.533	0.533	0.533	0.533	0.0	0.0	0.0	0.0
1017	NW_060a	0.6	0.6	0.6	0.6	0.6	0.6	0.6	0.0	0.0	0.0	0.0
1018	NW_066a	0.666	0.666	0.666	0.666	0.666	0.666	0.666	0.0	0.0	0.0	0.0
1019	NW_073a	0.734	0.734	0.734	0.734	0.734	0.734	0.734	0.0	0.0	0.0	0.0
1020	NW_080a	0.8	0.8	0.8	0.8	0.8	0.8	0.8	0.0	0.0	0.0	0.0
1021	NW_086a	0.866	0.866	0.866	0.866	0.866	0.866	0.866	0.0	0.0	0.0	0.0
1022	NW_093a	0.933	0.933	0.933	0.933	0.933	0.933	0.933	0.0	0.0	0.0	0.0
1023	NW_100a	1.0	1.0	1.0	1.0	1.0	1.0	1.0	0.0	0.0	0.0	0.0
1024	NW_000a	0.0	0.0	0.0	0.0	0.0	0.0	0.0	0.0	0.0	0.0	0.0
1025	NW_006a	0.066	0.066	0.066	0.066	0.066	0.066	0.066	0.0	0.0	0.0	0.0
1026	NW_013a	0.133	0.133	0.133	0.133	0.133	0.133	0.133	0.0	0.0	0.0	0.0
1027	NW_020a	0.2	0.2	0.2	0.2	0.2	0.2	0.2	0.0	0.0	0.0	0.0
1028	NW_026a	0.266	0.266	0.266	0.266	0.266	0.266	0.266	0.0	0.0	0.0	0.0
1029	NW_033a	0.333	0.333	0.333	0.333	0.333	0.333	0.333	0.0	0.0	0.0	0.0
1030	NW_040a	0.4	0.4	0.4	0.4	0.4	0.4	0.4	0.0	0.0	0.0	0.0
1031	NW_046a	0.466	0.466	0.466	0.466	0.466	0.466	0.466	0.0	0.0	0.0	0.0
1032	NW_053a	0.533	0.533	0.533	0.533	0.533	0.533	0.533	0.0	0.0	0.0	0.0
1033	NW_060a	0.6	0.6	0.6	0.6	0.6	0.6	0.6	0.0	0.0	0.0	0.0
1034	NW_066a	0.666	0.666	0.666	0.666	0.666	0.666	0.666	0.0	0.0	0.0	0.0
1035	NW_073a	0.734	0.734	0.734	0.734	0.734	0.734	0.734	0.0	0.0	0.0	0.0
1036	NW_080a	0.8	0.8	0.8	0.8	0.8	0.8	0.8	0.0	0.0	0.0	0.0
1037	NW_086a	0.866	0.866	0.866	0.866	0.866	0.866	0.866	0.0	0.0	0.0	0.0
1038	NW_093a	0.933	0.933	0.933	0.933	0.933	0.933	0.933	0.0	0.0	0.0	0.0
1039	NW_100a	1.0	1.0	1.0	1.0	1.0	1.0	1.0	0.0	0.0	0.0	0.0
1040	NW_000a	0.0	0.0	0.0	0.0	0.0	0.0	0.0	0.0	0.0	0.0	0.0
1041	NW_006a	0.066	0.066	0.066	0.066	0.066	0.066	0.066	0.0	0.0	0.0	0.0
1042	NW_013a	0.133	0.133	0.133	0.133	0.133	0.133	0.133	0.0	0.0	0.0	0.0
1043	NW_020a	0.2	0.2	0.2	0.2	0.2	0.2	0.2	0.0	0.0	0.0	0.0
1044	NW_026a	0.266	0.266	0.266	0.266	0.266	0.266	0.266	0.0	0.0	0.0	0.0
1045	NW_033a	0.333	0.333	0.333	0.333	0.333	0.333	0.333	0.0	0.0	0.0	0.0
1046	NW_040a	0.4	0.4	0.4	0.4	0.4	0.4	0.4	0.0	0.0	0.0	0.0
1047	NW_046a	0.466	0.466	0.466	0.466	0.466	0.466	0.466	0.0	0.0	0.0	0.0
1048	NW_053a	0.533	0.533	0.533	0.533	0.533	0.533	0.533	0.0	0.0	0.0	0.0
1049	NW_060a	0.6	0.6	0.6	0.6	0.6	0.6	0.6	0.0	0.0	0.0	0.0
1050	NW_066a	0.666	0.666	0.666	0.666	0.666	0.666	0.666	0.0	0.0	0.0	0.0
1051	NW_073a	0.734	0.734	0.734	0.734	0.734	0.734	0.734	0.0	0.0	0.0	0.0
1052	NW_080a	0.8	0.8	0.8	0.8	0.8	0.8	0.8	0.0	0.0	0.0	0.0

delta E\* = 3.2

gráfico TUB-SS19; 1080 colores estándar  
colores y diferencia en color,  $\Delta E^*$ , 3D=0, de=0, cmyk

entrada:  $rgb/cmyk \rightarrow rgb_d$   
salida: transfiera a  $cmyk_d$

vea archivos semejantes: <http://130.149.60.45/~farbmetrik/SS19/SS19L0NP.PDF> /PS  
información técnica: <http://www.ps.bam.de> o <http://130.149.60.45/~farbmetrik>

TUB matrícula: 20130201-SS19/SS19L0NP.PDF /PS  
aplicación para la medida salida de impresora láser, separacióncmykn6 (CMYK)

TUB material: code=rh4ta



vea archivos semejantes: <http://130.149.60.45/~farbmetrik/SS19/SS19.HTM>  
 información técnica: <http://www.ps.bam.de> o <http://130.149.60.45/~farbmetrik>

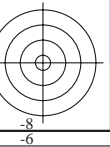
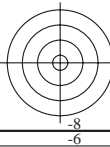
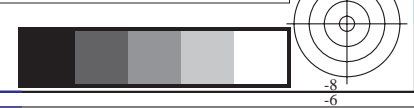
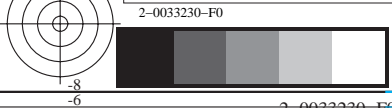
TUB matrícula: 20130201-SS19/SS19L0NP.PDF /.PS  
 aplicación para la medida salida de impresora láser, separación cmykn6 (CMYK)  
 TUB material: code=rh4ta

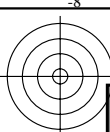
n	HIC*Fa	rgb_Fa	icf_Fa	hsi_Fa	rgb*Fa	LabCh*Fa	rgb*Fa	LabCh*Fa	DE*Fa	hsiMd	rgb*Md	LabCh*Md												
1053	NW_086a	0.866	0.866	0.866	0.866	0.0	0.866	0.866	0.866	90.6	0.0	-0.1	0.1	266.5	4.4	360	1.0	1.0	1.0	95.8	0.0	0.0	0.0	0.0
1054	NW_093a	0.933	0.933	0.933	0.933	0.0	0.933	0.933	0.933	94.4	0.0	-0.2	0.2	278.1	3.4	360	1.0	1.0	1.0	95.8	0.0	0.0	0.0	0.0
1055	NW_100a	1.0	1.0	1.0	1.0	0.0	1.0	1.0	1.0	95.8	0.0	0.0	0.0	152.8	0.0	360	1.0	1.0	1.0	95.8	0.0	0.0	0.0	0.0
1056	NW_000a	0.0	0.0	0.0	0.0	0.0	0.0	0.0	0.0	18.1	0.0	0.2	0.2	83.2	5.6	360	1.0	1.0	1.0	95.8	0.0	0.0	0.0	0.0
1057	NW_006a	0.066	0.066	0.066	0.066	0.0	0.066	0.066	0.066	21.5	0.1	0.1	0.2	48.9	7.0	360	1.0	1.0	1.0	95.8	0.0	0.0	0.0	0.0
1058	NW_013a	0.133	0.133	0.133	0.133	0.0	0.133	0.133	0.133	28.9	0.0	-0.7	0.7	268.2	4.4	360	1.0	1.0	1.0	95.8	0.0	0.0	0.0	0.0
1059	NW_020a	0.2	0.2	0.2	0.2	0.0	0.2	0.2	0.2	37.3	0.0	-1.1	1.1	267.2	1.4	360	1.0	1.0	1.0	95.8	0.0	0.0	0.0	0.0
1060	NW_026a	0.266	0.266	0.266	0.266	0.0	0.266	0.266	0.266	44.2	0.0	-1.1	1.1	269.1	1.7	360	1.0	1.0	1.0	95.8	0.0	0.0	0.0	0.0
1061	NW_033a	0.333	0.333	0.333	0.333	0.0	0.333	0.333	0.333	49.9	0.0	-0.8	0.8	274.5	2.3	360	1.0	1.0	1.0	95.8	0.0	0.0	0.0	0.0
1062	NW_040a	0.4	0.4	0.4	0.4	0.0	0.4	0.4	0.4	53.8	0.0	-0.9	0.9	273.2	1.4	360	1.0	1.0	1.0	95.8	0.0	0.0	0.0	0.0
1063	NW_046a	0.466	0.466	0.466	0.466	0.0	0.466	0.466	0.466	59.7	0.0	-1.1	1.1	268.9	2.6	360	1.0	1.0	1.0	95.8	0.0	0.0	0.0	0.0
1064	NW_053a	0.533	0.533	0.533	0.533	0.0	0.533	0.533	0.533	65.4	0.0	-0.9	0.9	273.1	3.3	360	1.0	1.0	1.0	95.8	0.0	0.0	0.0	0.0
1065	NW_060a	0.6	0.6	0.6	0.6	0.0	0.6	0.6	0.6	70.2	0.0	-0.8	0.8	268.8	3.2	360	1.0	1.0	1.0	95.8	0.0	0.0	0.0	0.0
1066	NW_066a	0.666	0.666	0.666	0.666	0.0	0.666	0.666	0.666	75.5	0.0	-0.7	0.7	271.9	3.8	360	1.0	1.0	1.0	95.8	0.0	0.0	0.0	0.0
1067	NW_073a	0.734	0.734	0.734	0.734	0.0	0.734	0.734	0.734	80.8	0.0	-0.4	0.4	265.0	4.1	360	1.0	1.0	1.0	95.8	0.0	0.0	0.0	0.0
1068	NW_080a	0.8	0.8	0.8	0.8	0.0	0.8	0.8	0.8	85.3	0.0	-0.3	0.3	279.5	3.9	360	1.0	1.0	1.0	95.8	0.0	0.0	0.0	0.0
1069	NW_086a	0.866	0.866	0.866	0.866	0.0	0.866	0.866	0.866	90.2	0.0	0.0	0.0	252.2	4.0	360	1.0	1.0	1.0	95.8	0.0	0.0	0.0	0.0
1070	NW_093a	0.933	0.933	0.933	0.933	0.0	0.933	0.933	0.933	94.2	0.0	-0.2	0.2	289.2	3.2	360	1.0	1.0	1.0	95.8	0.0	0.0	0.0	0.0
1071	NW_100a	1.0	1.0	1.0	1.0	0.0	1.0	1.0	1.0	95.8	0.0	0.0	0.1	331.9	0.1	360	1.0	1.0	1.0	95.8	0.0	0.0	0.0	0.0
1072	NW_000a	0.0	0.0	0.0	0.0	0.0	0.0	0.0	0.0	19.2	0.1	0.2	0.2	58.1	4.6	360	1.0	1.0	1.0	95.8	0.0	0.0	0.0	0.0
1073	NW_100a	1.0	1.0	1.0	1.0	0.0	1.0	1.0	1.0	95.7	0.0	-0.2	0.2	284.6	0.2	360	1.0	1.0	1.0	95.8	0.0	0.0	0.0	0.0
1074	R00Y_100_100a	1.0	0.0	0.0	1.0	1.0	1.0	0.0	0.0	47.0	56.3	40.2	69.2	35.5	2.6	389	1.0	0.0	0.0	47.5	57.2	37.8	68.6	33.4
1075	G50B_100_100a	0.0	1.0	1.0	1.0	1.0	0.0	1.0	1.0	54.9	-30.4	-42.0	51.8	234.0	2.1	210	0.0	1.0	1.0	53.1	-30.0	-43.1	52.5	235.1
1076	Y00G_100_100a	1.0	1.0	0.0	1.0	1.0	0.0	1.0	1.0	91.5	-16.0	86.1	87.6	100.5	1.5	89	1.0	1.0	0.0	91.5	-15.8	84.6	86.1	100.5
1077	B00R_100_100a	0.0	0.0	1.0	1.0	1.0	0.0	1.0	1.0	30.7	21.3	-44.1	49.0	295.7	4.7	270	0.0	0.0	1.0	32.5	16.9	-44.6	47.7	290.8
1078	G00B_100_100a	0.0	1.0	0.0	1.0	1.0	0.0	1.0	0.0	54.6	-69.2	33.1	76.7	154.3	2.8	149	0.0	1.0	0.0	54.3	-67.6	30.8	74.3	155.5
1079	B50R_100_100a	1.0	0.0	1.0	1.0	1.0	0.0	1.0	0.0	48.3	66.3	-13.8	67.7	348.1	1.4	330	1.0	0.0	1.0	48.1	65.4	-12.7	66.6	348.9

delta E\* = 3.0

gráfico TUB-SS19; 1080 colores estándar  
 colores y diferencia en color,  $\Delta E^*$ , 3D=0, de=0, cmyk

entrada:  $rgb/cmyk \rightarrow rgb_D$   
 salida: transfiera a  $cmyk_D$

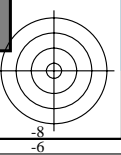
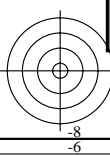
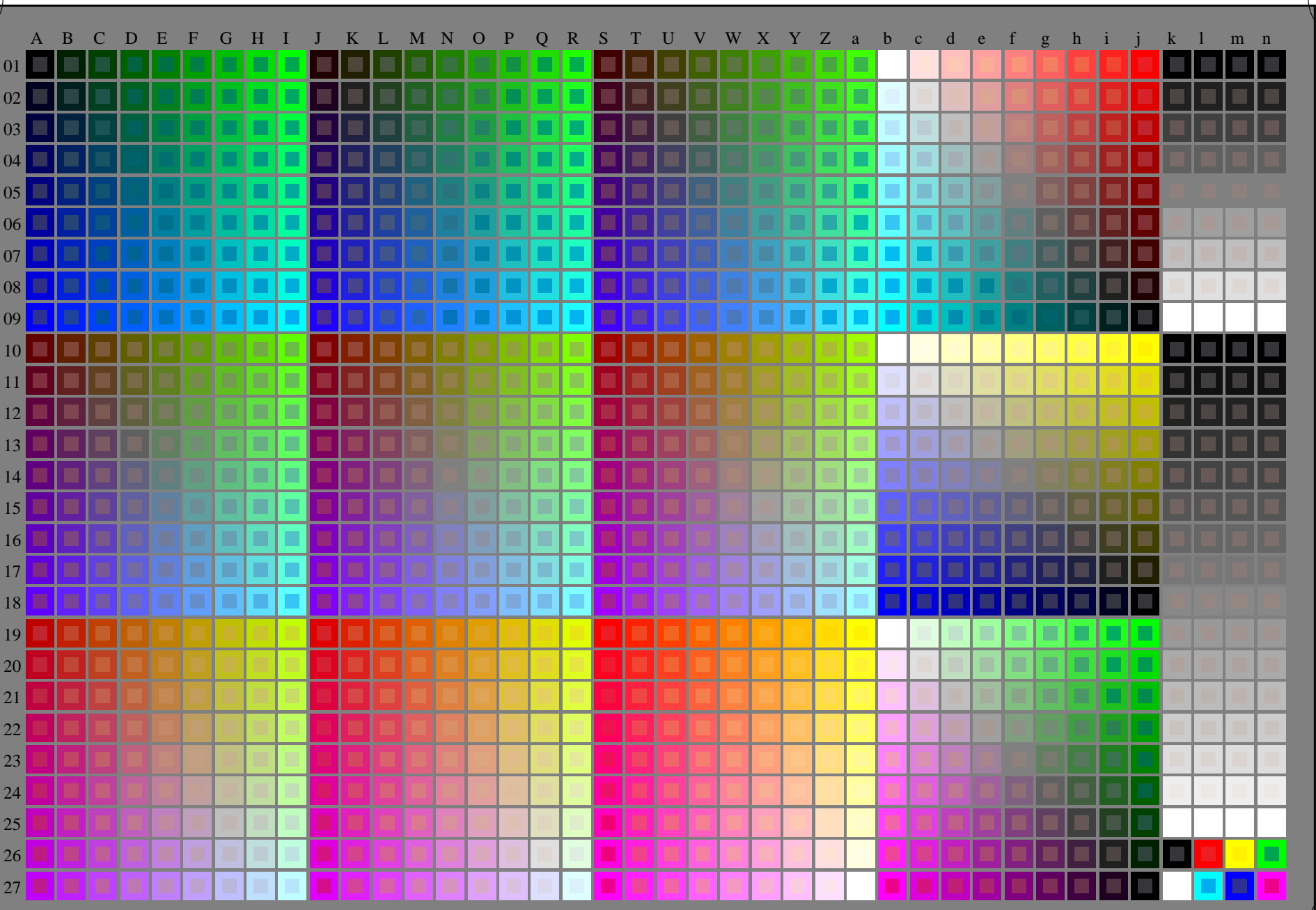




vea archivos semejantes: <http://130.149.60.45/~farbmetrik/SS19/SS19.HTM>  
información técnica: <http://www.ps.bam.de> o <http://130.149.60.45/~farbmetrik>

TUB matrícula: 20130201-SS19/SS19L0NP.PDF /.PS  
aplicación para la medida salida de impresora láser

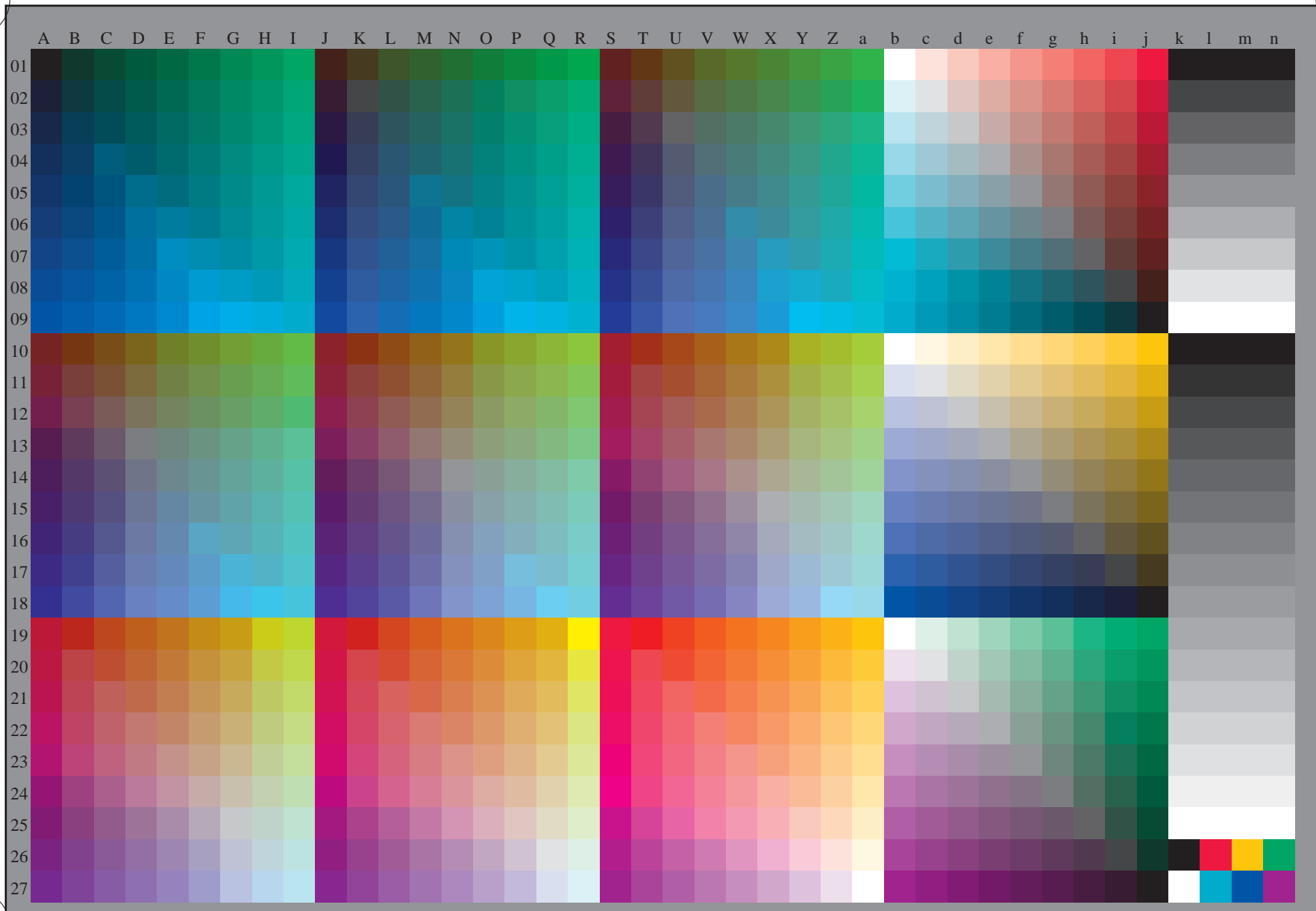
TUB material: code=rh4ta



2-013030-L0 SS190-7N rgb + cmy0 (A,j + k26\_n27),000n (k), w (l), nnn0 (m), www (n), 3D=0  
gráfico TUB-SS19; 1080 colores estándar  
gráfico según a DIN 33872  
entrada: *rgb/cmyk* -> *rgb/cmyk*  
salida: ningún cambio

vea archivos semejantes: <http://130.149.60.45/~farbmetrik/SS19/SS19.HTM>  
información técnica: <http://www.ps.bam.de> o <http://130.149.60.45/~farbmetrik>

TUB matrícula: 20130201-SS19/SS19L0NP.PDF /.PS  
aplicación para la medida salida de impresora láser, separacióncmykn6 (CMYK)  
TUB material: code=rh4ta



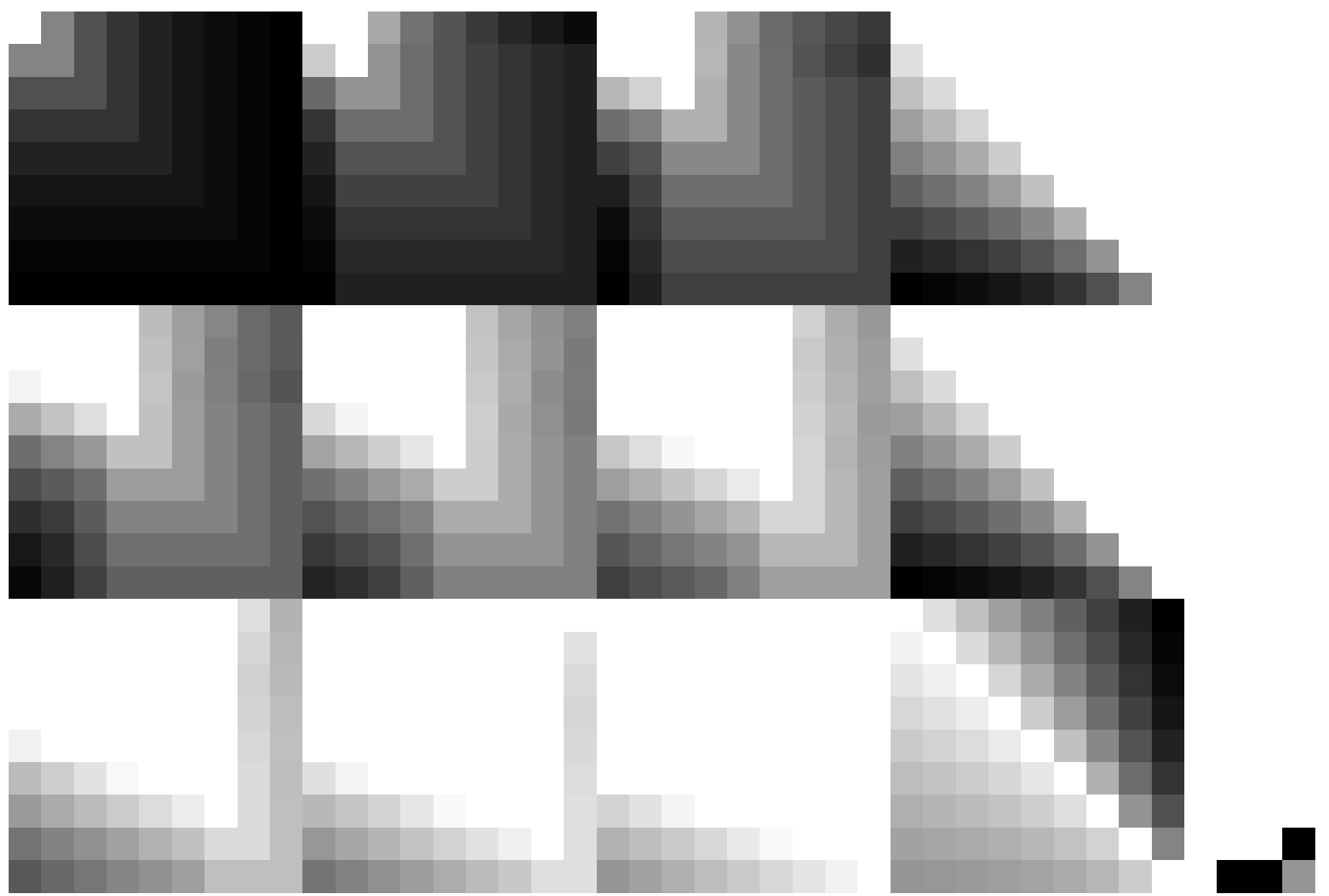
2-013130-L0 SS190-71 rgb (A\_n), 3D=0  
gráfico TUB-SS19; 1080 colores estándar  
gráfico según a DIN 33872, 3D=0, de=1, cmyk

entrada: *rgb/cmyk* -> *rgb<sub>e</sub>*  
salida: *transfiera a cmyk<sub>e</sub>*



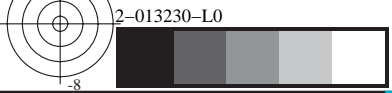
vea archivos semejantes: <http://130.149.60.45/~farbmetrik/SS19/SS19.HTM>  
información técnica: <http://www.ps.bam.de> o <http://130.149.60.45/~farbmetrik>

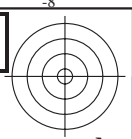
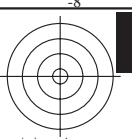
TUB matrícula: 20130201-SS19/SS19L0NP.PDF /.PS TUB material: code=rh4ta  
aplicación para la medida salida de impresora láser, separacióncmykn6 (CMYK)



SS190-71  
gráfico TUB-SS19; 1080 colores estándar  
gráfico según a DIN 33872, 3D=0, de=1, cmyk

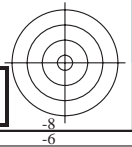
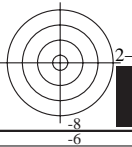
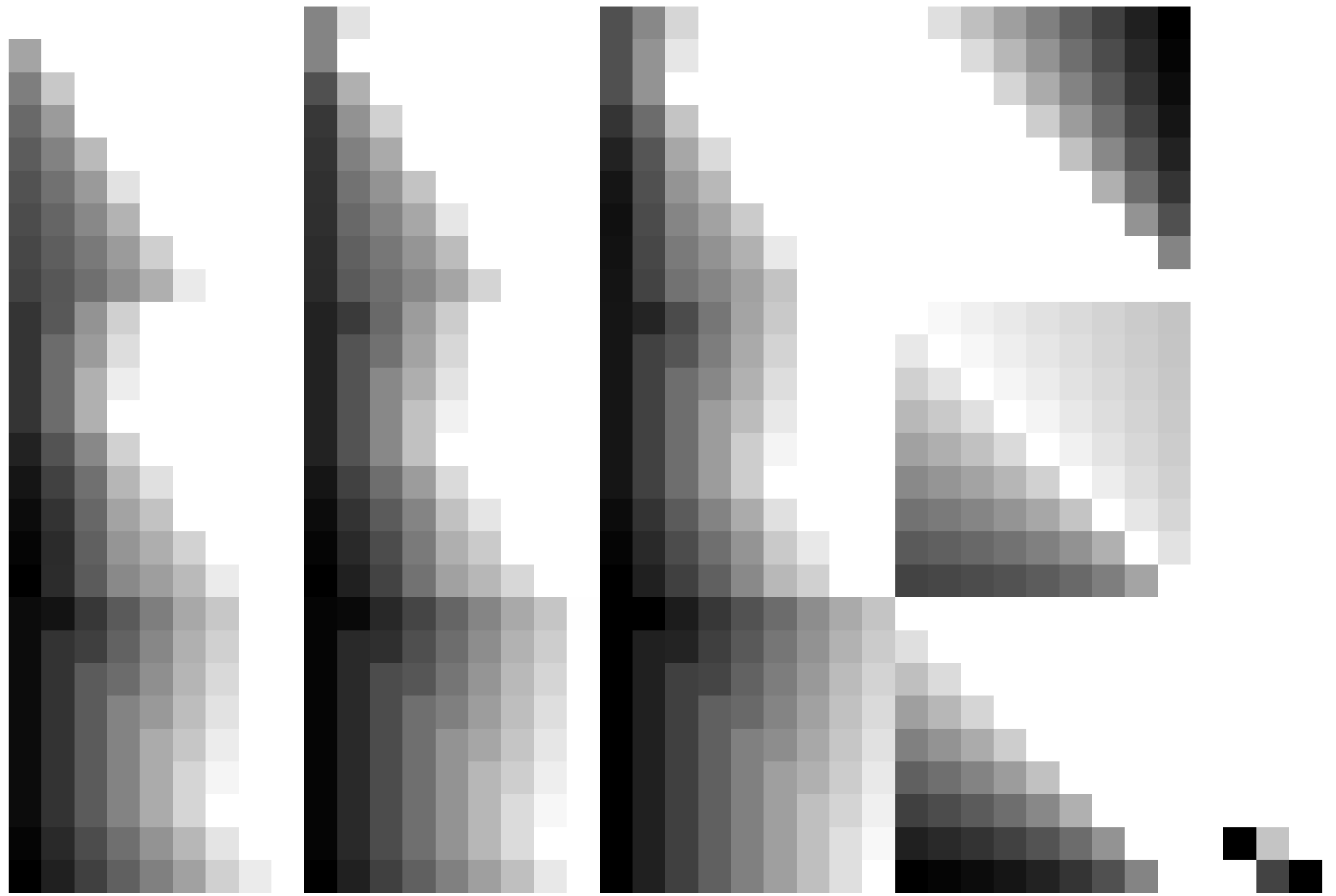
entrada:  $rgb/cmyk \rightarrow rgb_e$   
salida: transfiera a  $cmyk_e$





vea archivos semejantes: <http://130.149.60.45/~farbmetrik/SS19/SS19.HTM>  
información técnica: <http://www.ps.bam.de> o <http://130.149.60.45/~farbmetrik>

TUB matrícula: 20130201-SS19/SS19L0NP.PDF /.PS TUB material: code=rh4ta  
aplicación para la medida salida de impresora láser, separacióncmykn6 (CMYK)

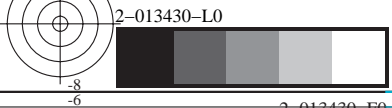
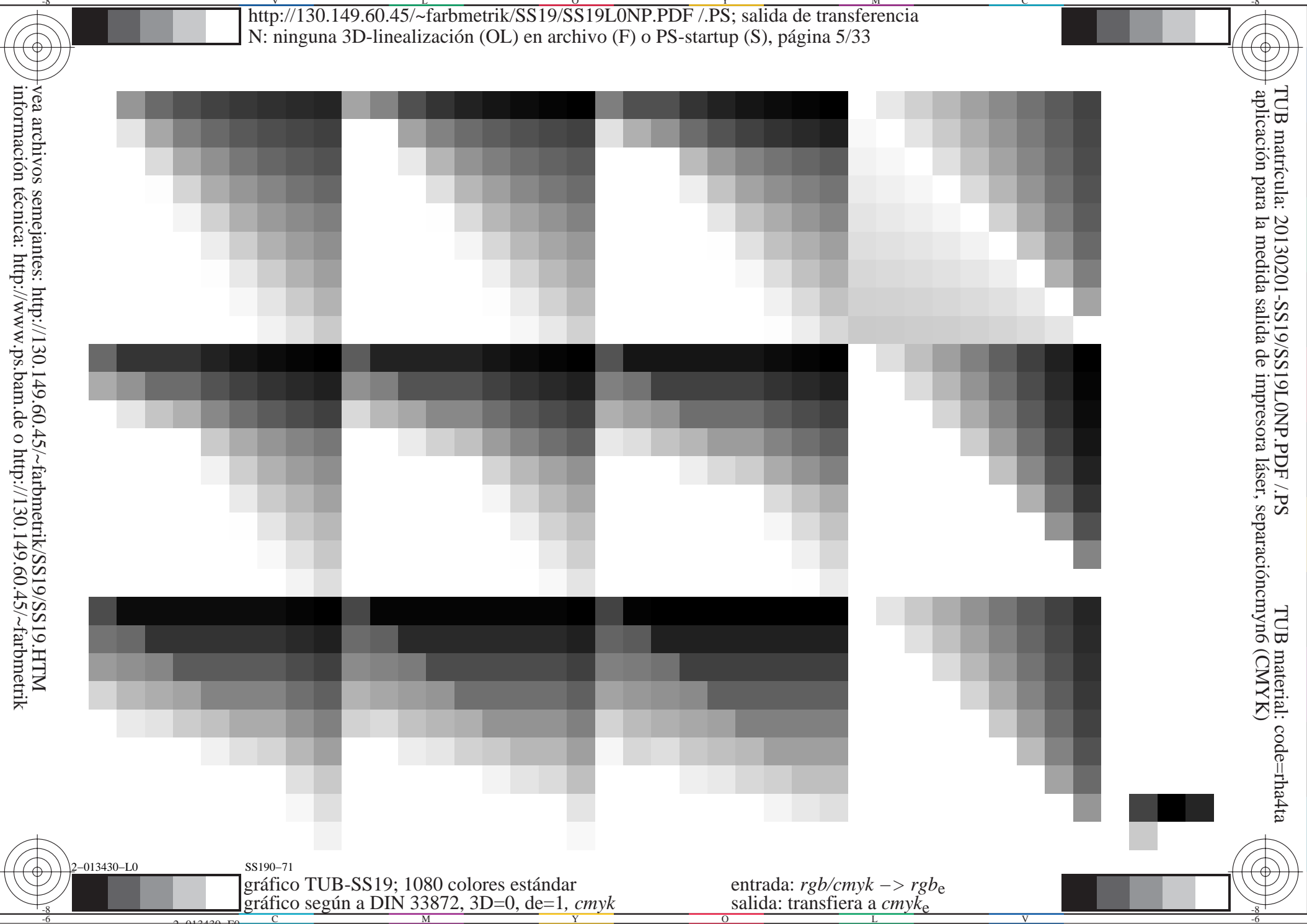


SS190-71  
gráfico TUB-SS19; 1080 colores estándar  
gráfico según a DIN 33872, 3D=0, de=1, *cmyk*

entrada: *rgb/cmyk* → *rgb<sub>e</sub>*  
salida: transferencia a *cmyk<sub>e</sub>*

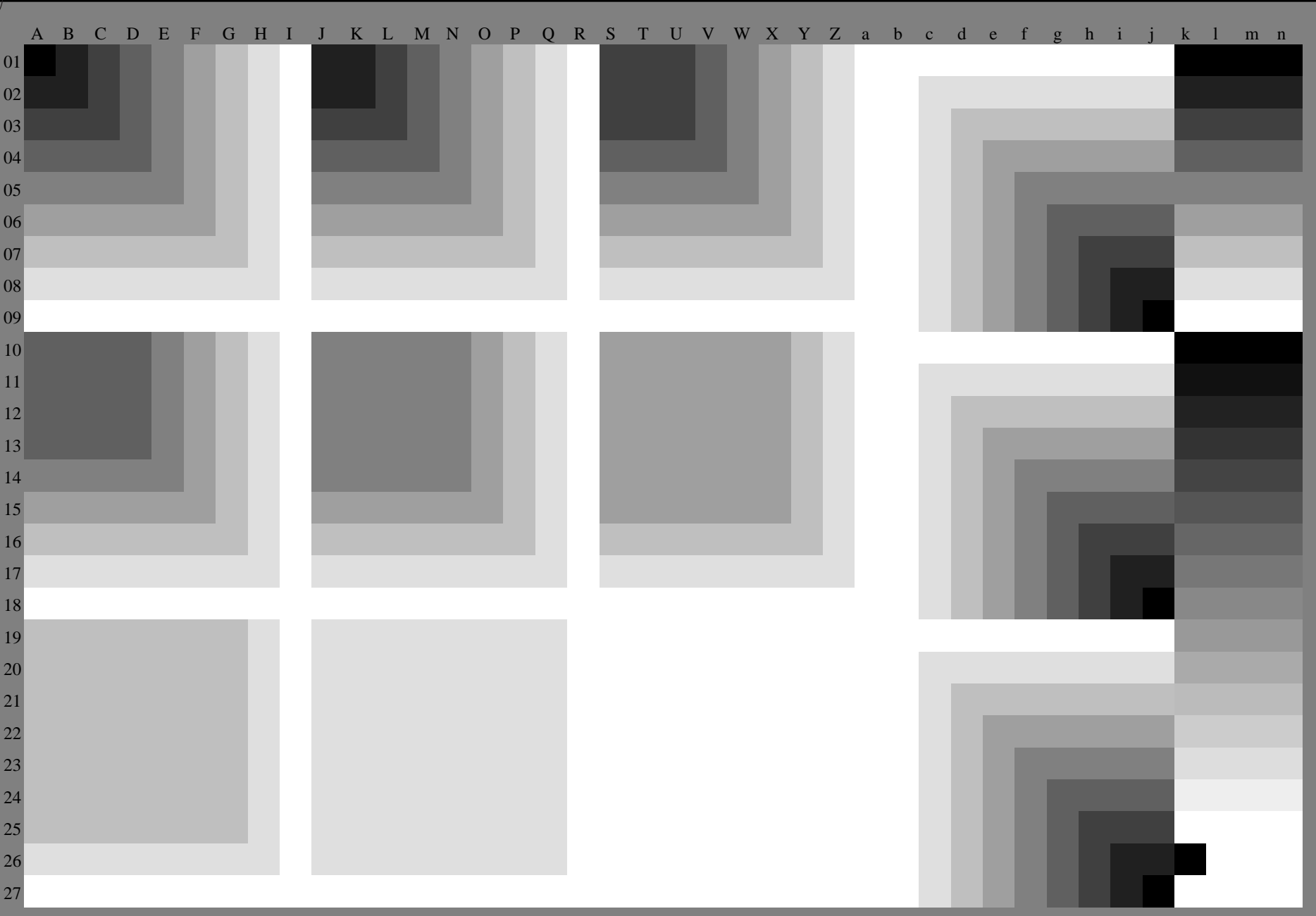
TUB matrícula: 20130201-SS19/SS19L0NP.PDF /.PS TUB material: code=rh4ta  
aplicación para la medida salida de impresora láser, separacióncmykn6 (CMYK)

vea archivos semejantes: <http://130.149.60.45/~farbmetrik/SS19/SS19.HTM>  
información técnica: <http://www.ps.bam.de> o <http://130.149.60.45/~farbmetrik>



vea archivos semejantes: <http://130.149.60.45/~farbmetrik/SS19/SS19.HTM>  
información técnica: <http://www.ps.bam.de> o <http://130.149.60.45/~farbmetrik>

TUB matrícula: 20130201-SS19/SS19L0NP.PDF /.PS  
aplicación para la medida salida de impresora láser, separacióncmykn6 (CMYK)  
TUB material: code=rh4ta

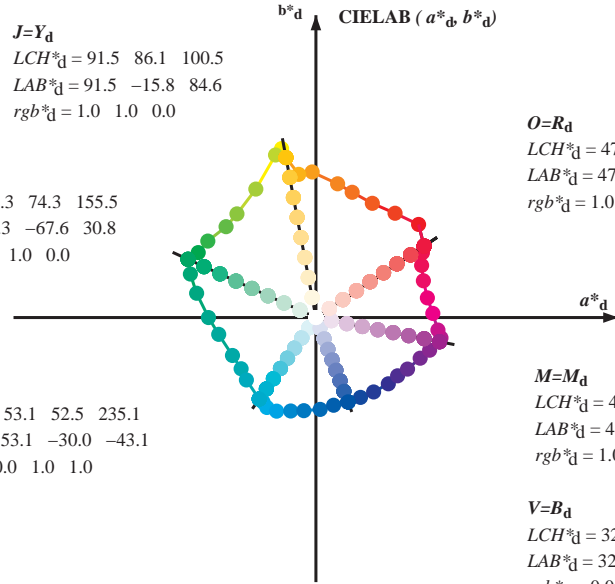


Data of Maximum color M in colorimetric system Laser printer output; separation cmy<sub>6</sub>\*, D65 for input or output; Six hue angles of the 60 degree standard colours RYGBM<sub>s</sub>:  $h_{ab,ds} = 30.0, 90.0, 150.0, 210.0, 270.0, 330.0$ ;  
 Six hue angles of the device colours RYGBM<sub>d</sub>:  $h_{ab,d} = 33.5, 100.6, 155.5, 235.2, 290.8, 348.9$ ; Six hue angles of the elementary colours RYGBM<sub>e</sub>:  $h_{ab,e} = 25.5, 92.3, 162.2, 217.0, 271.7, 328.6$

$J=Y_d$   
 $LCH^*_d = 91.5 \ 86.1 \ 100.5$   
 $LAB^*_d = 91.5 \ -15.8 \ 84.6$   
 $rgb^*_d = 1.0 \ 1.0 \ 0.0$

$L=G_d$   
 $LCH^*_d = 54.3 \ 74.3 \ 155.5$   
 $LAB^*_d = 54.3 \ -67.6 \ 30.8$   
 $rgb^*_d = 0.0 \ 1.0 \ 0.0$

$C=C_d$   
 $LCH^*_d = 53.1 \ 52.5 \ 235.1$   
 $LAB^*_d = 53.1 \ -30.0 \ -43.1$   
 $rgb^*_d = 0.0 \ 1.0 \ 1.0$



$O=R_d$   
 $LCH^*_d = 47.5 \ 68.6 \ 33.4$   
 $LAB^*_d = 47.5 \ 57.2 \ 37.8$   
 $rgb^*_d = 1.0 \ 0.0 \ 0.0$

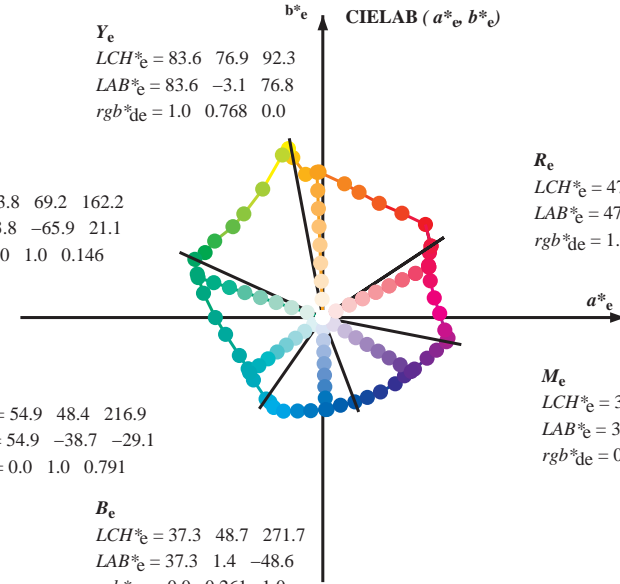
$M=M_d$   
 $LCH^*_d = 48.1 \ 66.6 \ 348.9$   
 $LAB^*_d = 48.1 \ 65.4 \ -12.7$   
 $rgb^*_d = 1.0 \ 0.0 \ 1.0$

$V=B_d$   
 $LCH^*_d = 32.5 \ 47.7 \ 290.8$   
 $LAB^*_d = 32.5 \ 16.9 \ -44.6$   
 $rgb^*_d = 0.0 \ 0.0 \ 1.0$

$Y_e$   
 $LCH^*_e = 83.6 \ 76.9 \ 92.3$   
 $LAB^*_e = 83.6 \ -3.1 \ 76.8$   
 $rgb^*_{de} = 1.0 \ 0.768 \ 0.0$

$G_e$   
 $LCH^*_e = 53.8 \ 69.2 \ 162.2$   
 $LAB^*_e = 53.8 \ -65.9 \ 21.1$   
 $rgb^*_{de} = 0.0 \ 1.0 \ 0.146$

$C_e$   
 $LCH^*_e = 54.9 \ 48.4 \ 216.9$   
 $LAB^*_e = 54.9 \ -38.7 \ -29.1$   
 $rgb^*_{de} = 0.0 \ 1.0 \ 0.791$



$R_e$   
 $LCH^*_e = 47.5 \ 62.1 \ 25.4$   
 $LAB^*_e = 47.5 \ 56.0 \ 26.7$   
 $rgb^*_{de} = 1.0 \ 0.0 \ 0.263$

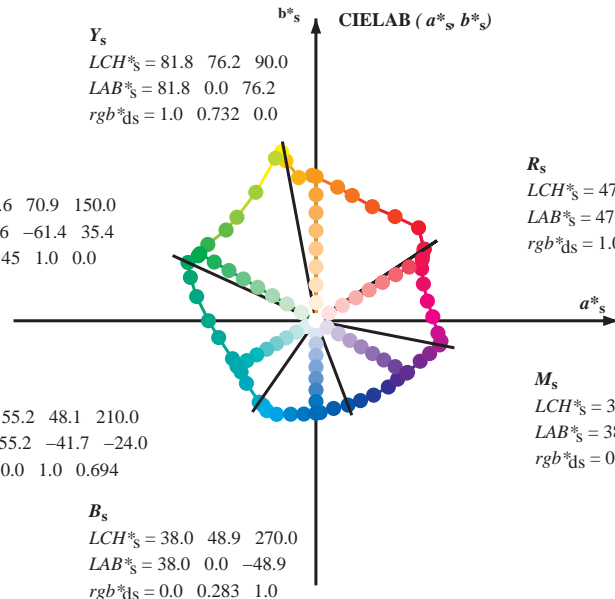
$M_e$   
 $LCH^*_e = 38.5 \ 54.7 \ 328.6$   
 $LAB^*_e = 38.5 \ 46.7 \ -28.5$   
 $rgb^*_{de} = 0.584 \ 0.0 \ 1.0$

$B_e$   
 $LCH^*_e = 37.3 \ 48.7 \ 271.7$   
 $LAB^*_e = 37.3 \ 1.4 \ -48.6$   
 $rgb^*_{de} = 0.0 \ 0.261 \ 1.0$

$Y_s$   
 $LCH^*_s = 81.8 \ 76.2 \ 90.0$   
 $LAB^*_s = 81.8 \ 0.0 \ 76.2$   
 $rgb^*_{ds} = 1.0 \ 0.732 \ 0.0$

$G_s$   
 $LCH^*_s = 57.6 \ 70.9 \ 150.0$   
 $LAB^*_s = 57.6 \ -61.4 \ 35.4$   
 $rgb^*_{ds} = 0.145 \ 1.0 \ 0.0$

$C_s$   
 $LCH^*_s = 55.2 \ 48.1 \ 210.0$   
 $LAB^*_s = 55.2 \ -41.7 \ -24.0$   
 $rgb^*_{ds} = 0.0 \ 1.0 \ 0.694$



$R_s$   
 $LCH^*_s = 47.6 \ 65.0 \ 30.0$   
 $LAB^*_s = 47.6 \ 56.3 \ 32.5$   
 $rgb^*_{ds} = 1.0 \ 0.0 \ 0.157$

$M_s$   
 $LCH^*_s = 38.9 \ 55.3 \ 330.0$   
 $LAB^*_s = 38.9 \ 47.9 \ -27.6$   
 $rgb^*_{ds} = 0.612 \ 0.0 \ 1.0$

$B_s$   
 $LCH^*_s = 38.0 \ 48.9 \ 270.0$   
 $LAB^*_s = 38.0 \ 0.0 \ -48.9$   
 $rgb^*_{ds} = 0.0 \ 0.283 \ 1.0$

$(a^*_d, b^*_d), (a^*_s, b^*_s), (a^*_e, b^*_e)$   
 $rgb^*_e LCH^*_s, LAB^*_s$   
 $h_{ab,s} = atan [ r^*_d cos(30) + g^*_d cos(150) ] / [ r^*_d sin(30) + g^*_d sin(150) + b^*_d sin(270) ]$  (1)  
 $h_{ab,s}$   
 $s: h_{ab,s} = 30.0, 90.0, 150.0, 210.0, 270.0, 330.0, 390.0 (i=0,6)$   
 $h_{48ab,sij} = h_{ab,si} + j [h_{ab,si+1} - h_{ab,si}] / 8 (i = 0, 1, \dots, 5; j = 0, 1, \dots, 7)$  (2)  
 $h_{360ab,sij} = h_{ab,si} + j [h_{ab,si+1} - h_{ab,si}] / 60 (i = 0, 1, \dots, 5; j = 0, 1, \dots, 59)$  (3)  
 $h_{ab,e}$   
 $e: h_{ab,e} = 25.5, 92.3, 162.2, 217.0, 271.7, 328.6, 385.5 (i=0,6)$   
 $h_{48ab,eij} = h_{ab,ei} + j [h_{ab,ei+1} - h_{ab,ei}] / 8 (i = 0, 1, \dots, 5; j = 0, 1, \dots, 7)$  (4)  
 $h_{360ab,eij} = h_{ab,ei} + j [h_{ab,ei+1} - h_{ab,ei}] / 60 (i = 0, 1, \dots, 5; j = 0, 1, \dots, 59)$  (5)  
 $h_{ab,d}$   
 $rgb^*_{de}$

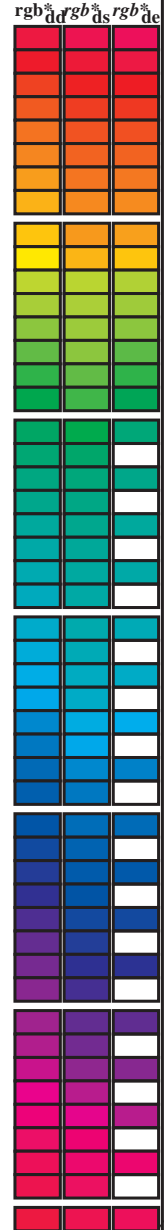
vea archivos semejantes: <http://130.149.60.45/~farbmetrik/SS19/SS19.HTM>  
 información técnica: <http://www.ps.bam.de> o <http://130.149.60.45/~farbmetrik>

TUB matrícula: 20130201-SS19/SS19L0NP.PDF /.PS  
 aplicación para la medida salida de impresora láser, separacióncmy<sub>6</sub> (CMYK)  
 TUB material: code=rh4ta



Data of maximum color M in colorimetric system Laser printer output; separation cmy<sup>6</sup>\*, D65 for input or output; Six hue angles of the 60 degree standard colours RY<sup>6</sup>CB<sub>6</sub>; h<sub>ab,ds</sub> = 30.0, 90.0, 150.0, 210.0, 270.0, 330.0; Six hue angles of the device colours RY<sup>6</sup>CB<sub>6</sub>d: h<sub>ab,d</sub> = 33.5, 100.6, 155.5, 235.2, 290.8, 348.9; Six hue angles of the elementary colours RY<sup>6</sup>CB<sub>6</sub>e: h<sub>ab,e</sub> = 25.5, 92.3, 162.2, 217.0, 271.7, 328.6

Table with 24 columns: h<sub>ab,d</sub>, h<sub>ab,s</sub>, h<sub>ab,e</sub>, r<sup>6</sup>g<sup>6</sup>b<sup>6</sup>\*, ddx64M, LAB\* ddx64M (x=LabCh), r<sup>6</sup>g<sup>6</sup>b<sup>6</sup>\*, ddx361M, LAB\* ddx361M (x=LabCh), r<sup>6</sup>g<sup>6</sup>b<sup>6</sup>\*, dsx361M, LAB\* dsx361M (x=LabCh), r<sup>6</sup>g<sup>6</sup>b<sup>6</sup>\*, dex361M, LAB\* dex361M (x=LabCh), r<sup>6</sup>g<sup>6</sup>b<sup>6</sup>\*, de. Rows 1-393.

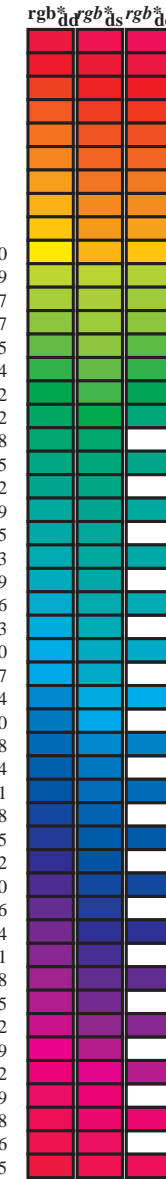


vea archivos semejantes: http://130.149.60.45/~farbmetrik/SS19/SS19.HTM información técnica: http://www.ps.bam.de o http://130.149.60.45/~farbmetrik

TUB matrícula: 20130201-SS19/SS19L0NP.PDF /.PS aplicación para la medida salida de impresora láser, separacióncmy<sup>6</sup> (CMYK) TUB material: code=rh4ta

Data of Maximum color M in colorimetric system Laser printer output; separation cmyn6\*, D65 for input or output; Six hue angles of the 60 degree standard colours RYGBM<sub>c</sub>: h<sub>ab,ds</sub> = 30.0, 90.0, 150.0, 210.0, 270.0, 330.0; Six hue angles of the device colours RYGBM<sub>d</sub>: h<sub>ab,d</sub> = 33.5, 100.6, 155.5, 235.2, 290.8, 348.9; Six hue angles of the elementary colours RYGBM<sub>e</sub>: h<sub>ab,e</sub> = 25.5, 92.3, 162.2, 217.0, 271.7, 328.6

h <sub>ab,d</sub>	h <sub>ab,s</sub>	h <sub>ab,e</sub>	rgb* dd64M	LAB* ddx64M (x=LabCh)	rgb* dex361M	LAB* dex361M
33.4	30.0	25.4	1.0 0.0 0.0	47.5 57.2 37.8 68.6 33.4	1.0 0.0 0.263 47.6	56.1 26.7 62.1 25
42.1	37.5	33.8	1.0 0.125 0.0	51.9 54.3 49.2 73.2 42.1	1.0 0.0 0.012 47.6	57.2 37.5 68.4 33
52.8	45.0	42.1	1.0 0.25 0.0	58.2 41.8 55.1 69.2 52.8	1.0 0.125 0.0	52.0 54.3 49.2 73.3 42
63.7	52.5	50.5	1.0 0.375 0.0	64.6 29.8 60.4 67.3 63.7	1.0 0.216 0.0	56.6 45.2 53.9 70.3 49
73.8	60.0	58.8	1.0 0.5 0.0	70.5 19.2 66.2 69.0 73.8	1.0 0.32 0.0	61.8 35.2 58.4 68.2 58
80.7	67.5	67.2	1.0 0.625 0.0	74.9 11.4 70.7 71.6 80.7	1.0 0.412 0.0	66.4 26.9 62.3 67.9 66
91.5	75.0	75.6	1.0 0.75 0.0	82.9 -2.0 76.9 77.0 91.5	1.0 0.532 0.0	71.6 17.3 67.5 69.7 75
96.8	82.5	83.9	1.0 0.875 0.0	87.6 -9.0 75.7 76.3 96.8	1.0 0.655 0.0	76.9 8.4 72.5 73.0 83
100.5	90.0	92.3	1.0 1.0 0.0	91.5 -15.8 84.6 86.1 100.5	1.0 0.769 0.0	83.7 -3.0 76.8 76.9 92
101.4	97.5	101.0	0.875 1.0 0.0	92.8 -18.1 89.4 91.2 101.4	1.0 0.996 0.0	91.5 -15.5 84.4 85.8 100
103.9	105.0	109.7	0.75 1.0 0.0	90.1 -21.3 86.0 88.6 103.9	0.684 1.0 0.0	84.7 -27.5 76.7 81.5 109
115.0	112.5	118.5	0.625 1.0 0.0	79.9 -31.7 67.9 75.0 115.0	0.595 1.0 0.0	77.8 -34.4 65.0 73.6 117
127.3	120.0	127.2	0.5 1.0 0.0	70.9 -41.7 54.8 68.9 127.3	0.501 1.0 0.0	71.0 -41.6 54.9 68.9 127
134.7	127.5	136.0	0.375 1.0 0.0	66.5 -47.5 48.0 67.6 134.7	0.366 1.0 0.0	66.2 -48.2 47.6 67.8 135
144.7	135.0	144.7	0.25 1.0 0.0	60.6 -57.2 40.4 70.1 144.7	0.25 1.0 0.0	60.6 -57.1 40.5 70.1 144
151.0	142.5	153.4	0.125 1.0 0.0	57.0 -62.2 34.4 71.1 151.0	0.073 1.0 0.0	55.9 -64.4 33.0 72.5 152
155.5	150.0	162.2	0.0 1.0 0.0	54.3 -67.6 30.8 74.3 155.5	0.0 1.0 0.147 53.8	-65.9 21.1 69.3 162
160.8	157.5	169.0	0.0 1.0 0.125 53.8	-66.4 23.0 70.2 160.8	0.0 1.0 0.251 53.8	-63.0 12.7 64.4 168
168.5	165.0	175.9	0.0 1.0 0.25 53.7	-63.1 12.8 64.4 168.5	0.0 1.0 0.331 54.4	-59.3 4.2 59.5 175
179.9	172.5	182.7	0.0 1.0 0.375 54.7	-56.8 0.0 56.8 179.9	0.0 1.0 0.405 54.8	-55.6 -2.1 55.7 182
189.8	180.0	189.6	0.0 1.0 0.5 55.0	-51.4 -8.9 52.2 189.8	0.0 1.0 0.497 55.0	-51.5 -8.6 52.3 189
204.4	187.5	196.4	0.0 1.0 0.625 55.3	-44.1 -20.0 48.5 204.4	0.0 1.0 0.553 55.2	-48.6 -13.9 50.7 195
214.4	195.0	203.2	0.0 1.0 0.75 55.2	-39.5 -27.1 47.9 214.4	0.0 1.0 0.615 55.3	-44.7 -19.2 48.8 203
221.9	202.5	210.1	0.0 1.0 0.875 54.4	-36.7 -33.0 49.4 221.9	0.0 1.0 0.69 55.3	-41.8 -23.8 48.2 209
235.1	210.0	216.9	0.0 1.0 1.0 53.1	-30.0 -43.1 52.5 235.1	0.0 1.0 0.792 55.0	-38.6 -29.0 48.4 216
237.9	217.5	223.8	0.0 0.875 1.0 53.1	-27.9 -44.7 52.7 237.9	0.0 1.0 0.888 54.3	-36.1 -34.1 49.8 223
241.3	225.0	230.6	0.0 0.75 1.0 52.9	-25.9 -47.5 54.1 241.3	0.0 1.0 0.957 53.6	-32.5 -39.7 51.5 230
247.2	232.5	237.5	0.0 0.625 1.0 50.5	-20.8 -49.5 53.7 247.2	0.0 0.916 1.0 53.1	-28.6 -44.1 52.7 237
254.9	240.0	244.3	0.0 0.5 1.0 46.1	-13.3 -49.4 51.1 254.9	0.0 0.686 1.0 51.7	-23.3 -48.5 54.0 244
262.6	247.5	251.2	0.0 0.375 1.0 41.4	-6.3 -49.2 49.6 262.6	0.0 0.568 1.0 48.6	-17.2 -49.5 52.6 250
272.6	255.0	258.0	0.0 0.25 1.0 36.8	2.2 -48.5 48.6 272.6	0.0 0.449 1.0 44.2	-10.4 -49.4 50.6 258
281.4	262.5	264.8	0.0 0.125 1.0 35.0	9.4 -46.3 47.3 281.4	0.0 0.353 1.0 40.6	-4.7 -49.2 49.5 264
290.8	270.0	271.7	0.0 0.0 1.0 32.5	16.9 -44.6 47.7 290.8	0.0 0.261 1.0 37.3	1.5 -48.6 48.7 271
299.2	277.5	278.8	0.125 0.0 1.0 31.6	23.6 -42.2 48.4 299.2	0.0 0.169 1.0 35.7	7.0 -47.2 47.8 278
307.8	285.0	285.9	0.25 0.0 1.0 31.0	30.5 -39.3 49.8 307.8	0.0 0.065 1.0 33.9	13.1 -45.6 47.5 285
317.5	292.5	293.0	0.375 0.0 1.0 34.2	38.2 -35.0 51.8 317.5	0.026 0.0 1.0 32.4	18.4 -44.1 47.9 292
324.4	300.0	300.1	0.5 0.0 1.0 37.2	43.1 -30.8 53.0 324.4	0.139 0.0 1.0 31.5	24.4 -41.9 48.6 300
330.6	307.5	307.2	0.625 0.0 1.0 39.1	48.4 -27.2 55.6 330.6	0.235 0.0 1.0 31.1	29.8 -39.7 49.7 306
338.7	315.0	314.3	0.75 0.0 1.0 41.8	55.1 -21.4 59.1 338.7	0.335 0.0 1.0 33.2	35.8 -36.5 51.2 314
343.9	322.5	321.4	0.875 0.0 1.0 45.6	60.1 -17.3 62.6 343.9	0.439 0.0 1.0 35.8	40.8 -32.9 52.5 321
348.9	330.0	328.6	1.0 0.0 1.0 48.1	65.4 -12.7 66.6 348.9	0.584 0.0 1.0 38.5	46.8 -28.4 54.8 328
350.7	337.5	335.7	1.0 0.0 0.875 49.5	66.1 -10.7 67.0 350.7	0.696 0.0 1.0 40.7	52.3 -24.0 57.6 335
354.2	345.0	342.8	1.0 0.0 0.75 49.3	64.5 -6.5 64.8 354.2	0.848 0.0 1.0 44.9	59.1 -18.2 61.9 342
361.9	352.5	349.9	1.0 0.0 0.625 48.0	61.8 2.1 61.8 361.9	0.910 0.0 1.0 48.6	65.6 -12.1 66.8 349
370.0	360.0	357.0	1.0 0.0 0.5 47.8	58.9 10.4 59.9 370.0	1.0 0.0 0.828 49.5	65.6 -9.0 66.2 352
378.9	367.5	364.1	1.0 0.0 0.375 47.4	56.8 19.5 60.0 378.9	1.0 0.0 0.659 48.4	62.7 -0.1 62.7 359
386.2	375.0	371.2	1.0 0.0 0.25 47.5	55.9 27.5 62.3 386.2	1.0 0.0 0.519 47.8	59.5 9.2 60.2 368
391.3	382.5	378.3	1.0 0.0 0.125 47.6	56.3 34.2 65.9 391.3	1.0 0.0 0.408 47.5	57.6 17.1 60.0 376
393.4	390.0	385.4	1.0 0.0 0.0 47.5	57.2 37.8 68.6 393.4	1.0 0.0 0.263 47.6	56.1 26.7 62.1 385



TUB matrícula: 20130201-SS19/SS19L0NP.PDF /.PS  
 aplicación para la medida salida de impresora láser, separacióncmyn6 (CMYK)  
 TUB material: code=rh4tra

vea archivos semejantes: http://130.149.60.45/~farbmetrik/SS19/SS19L0NP.PDF /.PS  
 información técnica: http://www.ps.bam.de o http://130.149.60.45/~farbmetrik



Data of Maximum color M in colorimetric system Laser printer output; separation cmyn6\*, D65 for input or output; Six hue angles of the 60 degree standard colours RYGBM<sub>s</sub>: h<sub>ab,ds</sub> = 30.0, 90.0, 150.0, 210.0, 270.0, 330.0;

Six hue angles of the device colours RYGBM<sub>d</sub>: h<sub>ab,d</sub> = 33.5, 100.6, 155.5, 235.2, 290.8, 348.9; Six hue angles of the elementary colours RYGBM<sub>e</sub>: h<sub>ab,e</sub> = 25.5, 92.3, 162.2, 217.0, 271.7, 328.6

Table with columns for colorimetric data: h\_ab,d, h\_ab,s, h\_ab,e, rgbb\*dd361M, LAB\* ddx361Mi (x=LabCh), rgbb\*ds361Mi, LAB\* dsx361Mi (x=LabCh), rgbb\*dd361Mi, LAB\* de361Mi, LAB\* dex361Mi (x=LabCh), rgbb\*dd361Mi, and Y\_d, Y\_s, Y\_e. Rows correspond to color patches 2-127.



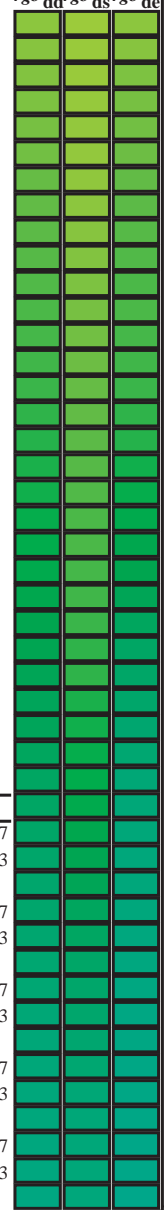
vea archivos semejantes: http://130.149.60.45/~farbmetrik/SS19/SS19.HTM  
información técnica: http://www.ps.bam.de o http://130.149.60.45/~farbmetrik

TUB matrícula: 20130201-SS19/SS19L0NP.PDF /.PS  
aplicación para la medida salida de impresora láser, separacióncmyn6 (CMYK)  
TUB material: code=rh4ta

Data of Maximum color M in colorimetric system Laser printer output; separation cmyn6\*, D65 for input or output; Six hue angles of the 60 degree standard colours RYGBM<sub>s</sub>: h<sub>ab,ds</sub> = 30.0, 90.0, 150.0, 210.0, 270.0, 330.0;

Six hue angles of the device colours RYGBM<sub>d</sub>: h<sub>ab,d</sub> = 33.5, 100.6, 155.5, 235.2, 290.8, 348.9; Six hue angles of the elementary colours RYGBM<sub>e</sub>: h<sub>ab,e</sub> = 25.5, 92.3, 162.2, 217.0, 271.7, 328.6

h <sub>ab,d</sub>	h <sub>ab,s</sub>	h <sub>ab,e</sub>	rgb* dd361M	LAB* ddx361Mi (x=LabCh)	rgb* ds361Mi	LAB* dsx361Mi (x=LabCh)	rgb* dd361Mi	LAB* dex361Mi (x=LabCh)	rgb* dd361Mi	LAB* dex361Mi (x=LabCh)	rgb* dd361Mi	LAB* dex361Mi (x=LabCh)	rgb* dd361Mi	LAB* dex361Mi (x=LabCh)	rgb* dd361Mi	LAB* dex361Mi (x=LabCh)	rgb* dd361Mi	LAB* dex361Mi (x=LabCh)
127	120	127	0.5	1.0	0.0	70.9	-41.7	54.8	68.9	127	0.5	1.0	0.0	70.9	-41.7	54.8	68.9	127
128	121	128	0.483	1.0	0.0	70.4	-42.6	53.9	68.7	128	0.483	1.0	0.0	70.4	-42.6	53.9	68.7	128
129	122	129	0.466	1.0	0.0	69.8	-43.4	53.0	68.5	129	0.466	1.0	0.0	69.8	-43.4	53.0	68.5	129
130	123	130	0.45	1.0	0.0	69.2	-44.2	52.1	68.3	130	0.45	1.0	0.0	69.2	-44.2	52.1	68.3	130
131	124	131	0.433	1.0	0.0	68.6	-45.0	51.2	68.2	131	0.433	1.0	0.0	68.6	-45.0	51.2	68.2	131
132	125	132	0.416	1.0	0.0	68.0	-45.7	50.3	68.0	132	0.416	1.0	0.0	68.0	-45.7	50.3	68.0	132
133	126	133	0.4	1.0	0.0	67.4	-46.5	49.4	67.8	133	0.4	1.0	0.0	67.4	-46.5	49.4	67.8	133
134	127	134	0.383	1.0	0.0	66.8	-47.2	48.5	67.7	134	0.383	1.0	0.0	66.8	-47.2	48.5	67.7	134
135	128	135	0.366	1.0	0.0	66.1	-48.2	47.5	67.7	135	0.366	1.0	0.0	66.1	-48.2	47.5	67.7	135
136	129	136	0.35	1.0	0.0	65.4	-49.5	46.6	68.1	136	0.35	1.0	0.0	65.4	-49.5	46.6	68.1	136
138	130	138	0.333	1.0	0.0	64.6	-50.9	45.7	68.4	138	0.333	1.0	0.0	64.6	-50.9	45.7	68.4	138
139	131	140	0.316	1.0	0.0	63.8	-52.2	44.7	68.7	139	0.316	1.0	0.0	63.8	-52.2	44.7	68.7	139
140	132	141	0.3	1.0	0.0	63.0	-53.5	43.7	69.1	140	0.3	1.0	0.0	63.0	-53.5	43.7	69.1	140
142	133	142	0.283	1.0	0.0	62.2	-54.7	42.6	69.4	142	0.283	1.0	0.0	62.2	-54.7	42.6	69.4	142
143	134	143	0.266	1.0	0.0	61.4	-56.0	41.5	69.7	143	0.266	1.0	0.0	61.4	-56.0	41.5	69.7	143
144	135	144	0.25	1.0	0.0	60.6	-57.2	40.4	70.1	144	0.25	1.0	0.0	60.6	-57.2	40.4	70.1	144
145	136	145	0.233	1.0	0.0	60.1	-57.9	39.6	70.2	145	0.233	1.0	0.0	60.1	-57.9	39.6	70.2	145
146	137	147	0.216	1.0	0.0	59.6	-58.6	38.9	70.3	146	0.216	1.0	0.0	59.6	-58.6	38.9	70.3	146
147	138	148	0.2	1.0	0.0	59.1	-59.3	38.1	70.5	147	0.2	1.0	0.0	59.1	-59.3	38.1	70.5	147
148	139	149	0.183	1.0	0.0	58.7	-59.9	37.3	70.6	148	0.183	1.0	0.0	58.7	-59.9	37.3	70.6	148
148	140	150	0.166	1.0	0.0	58.2	-60.6	36.4	70.7	148	0.166	1.0	0.0	58.2	-60.6	36.4	70.7	148
149	141	151	0.15	1.0	0.0	57.7	-61.2	35.6	70.9	149	0.15	1.0	0.0	57.7	-61.2	35.6	70.9	149
150	142	152	0.133	1.0	0.0	57.2	-61.9	34.8	71.0	150	0.133	1.0	0.0	57.2	-61.9	34.8	71.0	150
151	143	154	0.116	1.0	0.0	56.8	-62.5	34.1	71.3	151	0.116	1.0	0.0	56.8	-62.5	34.1	71.3	151
151	144	155	0.1	1.0	0.0	56.4	-63.3	33.7	71.7	151	0.1	1.0	0.0	56.4	-63.3	33.7	71.7	151
152	145	156	0.083	1.0	0.0	56.1	-64.0	33.2	72.1	152	0.083	1.0	0.0	56.1	-64.0	33.2	72.1	152
153	146	157	0.066	1.0	0.0	55.7	-64.7	32.8	72.6	153	0.066	1.0	0.0	55.7	-64.7	32.8	72.6	153
153	147	158	0.049	1.0	0.0	55.4	-65.5	32.3	73.0	153	0.049	1.0	0.0	55.4	-65.5	32.3	73.0	153
154	148	159	0.033	1.0	0.0	55.0	-66.2	31.8	73.5	154	0.033	1.0	0.0	55.0	-66.2	31.8	73.5	154
154	149	161	0.016	1.0	0.0	54.7	-66.9	31.3	73.9	154	0.016	1.0	0.0	54.7	-66.9	31.3	73.9	154
155	150	162	0.0	1.0	0.0	54.3	-67.6	30.8	74.3	155	0.0	1.0	0.0	54.3	-67.6	30.8	74.3	155
156	151	163	0.0	1.0	0.016	54.2	-67.5	29.7	73.8	156	0.0	1.0	0.017	54.2	-67.5	29.7	73.8	156
156	152	164	0.0	1.0	0.033	54.2	-67.4	28.6	73.2	156	0.0	1.0	0.033	54.2	-67.4	28.6	73.2	156
157	153	164	0.0	1.0	0.05	54.1	-67.2	27.6	72.7	157	0.0	1.0	0.05	54.1	-67.2	27.6	72.7	157
158	154	165	0.0	1.0	0.066	54.0	-67.1	26.6	72.1	158	0.0	1.0	0.067	54.0	-67.1	26.6	72.1	158
159	155	166	0.0	1.0	0.083	53.9	-66.9	25.5	71.6	159	0.0	1.0	0.083	53.9	-66.9	25.5	71.6	159
159	156	167	0.0	1.0	0.1	53.9	-66.7	24.5	71.1	159	0.0	1.0	0.1	53.9	-66.7	24.5	71.1	159
160	157	168	0.0	1.0	0.116	53.8	-66.5	23.5	70.5	160	0.0	1.0	0.117	53.8	-66.5	23.5	70.5	160
161	158	169	0.0	1.0	0.133	53.8	-66.2	22.3	69.9	161	0.0	1.0	0.133	53.8	-66.2	22.3	69.9	161
162	159	170	0.0	1.0	0.15	53.8	-65.8	20.8	69.1	162	0.0	1.0	0.15	53.8	-65.8	20.8	69.1	162
163	160	171	0.0	1.0	0.166	53.8	-65.5	19.4	68.3	163	0.0	1.0	0.167	53.8	-65.5	19.4	68.3	163
164	161	172	0.0	1.0	0.183	53.8	-65.0	18.1	67.5	164	0.0	1.0	0.183	53.8	-65.0	18.1	67.5	164
165	162	173	0.0	1.0	0.2	53.8	-64.6	16.7	66.7	165	0.0	1.0	0.2	53.8	-64.6	16.7	66.7	165
166	163	174	0.0	1.0	0.216	53.7	-64.1	15.4	66.0	166	0.0	1.0	0.217	53.7	-64.1	15.4	66.0	166
167	164	175	0.0	1.0	0.233	53.7	-63.6	14.1	65.2	167	0.0	1.0	0.233	53.7	-63.6	14.1	65.2	167
168	165	175	0.0	1.0	0.25	53.7	-63.1	12.8	64.4	168	0.0	1.0	0.25	53.7	-63.1	12.8	64.4	168



vea archivos semejantes: http://130.149.60.45/~farbmetrik/SS19/SS19.HTM  
información técnica: http://www.ps.bam.de o http://130.149.60.45/~farbmetrik

TUB matrícula: 20130201-SS19/SS19L0NP.PDF /.PS  
aplicación para la medida salida de impresora láser, separacióncmyn6 (CMYK)  
TUB material: code=rh4ta

Data of Maximum color M in colorimetric system Laser printer output; separation cmy<sup>6</sup>\*, D65 for input or output; Six hue angles of the 60 degree standard colours RYGBM<sub>c</sub>: h<sub>ab,ds</sub> = 30.0, 90.0, 150.0, 210.0, 270.0, 330.0;

Six hue angles of the device colours RYGBM<sub>d</sub>: h<sub>ab,d</sub> = 33.5, 100.6, 155.5, 235.2, 290.8, 348.9; Six hue angles of the elementary colours RYGBM<sub>e</sub>: h<sub>ab,e</sub> = 25.5, 92.3, 162.2, 217.0, 271.7, 328.6

Table with 24 columns: h\_ab,d, h\_ab,s, h\_ab,e, rgb\*\_dd361M, LAB\*\_ddx361Mi (x=LabCh), rgb\*\_ds361Mi, LAB\*\_dsx361Mi (x=LabCh), rgb\*\_dd361Mi, LAB\*\_dex361Mi (x=LabCh), rgb\*\_dd361Mi, LAB\*\_dex361Mi (x=LabCh), and three columns of color swatches (rgb\*\_dd, rgb\*\_ds, rgb\*\_de).

vea archivos semejantes: http://130.149.60.45/~farbmetrik/SS19/SS19.HTM  
información técnica: http://www.ps.bam.de o http://130.149.60.45/~farbmetrik

TUB matrícula: 20130201-SS19/SS19L0NP.PDF /.PS  
aplicación para la medida salida de impresora láser, separación cmy<sup>6</sup> (CMYK)  
TUB material: code=rh4ta

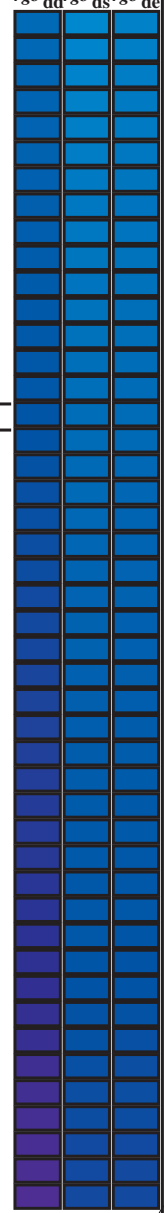




Data of Maximum color M in colorimetric system Laser printer output; separation cmyn6\*, D65 for input or output; Six hue angles of the 60 degree standard colours RYGBM<sub>s</sub>: h<sub>ab,ds</sub> = 30.0, 90.0, 150.0, 210.0, 270.0, 330.0;

Six hue angles of the device colours RYGBM<sub>d</sub>: h<sub>ab,d</sub> = 33.5, 100.6, 155.5, 235.2, 290.8, 348.9; Six hue angles of the elementary colours RYGBM<sub>e</sub>: h<sub>ab,e</sub> = 25.5, 92.3, 162.2, 217.0, 271.7, 328.6

h <sub>ab,d</sub>	h <sub>ab,s</sub>	h <sub>ab,e</sub>	rgb* <sub>dd361M</sub>	LAB* <sub>ddx361Mi (x=LabCh)</sub>	rgb* <sub>ds361Mi</sub>	LAB* <sub>dsx361Mi (x=LabCh)</sub>	rgb* <sub>dd361Mi</sub>	rgb* <sub>de361Mi</sub>	LAB* <sub>dex361Mi (x=LabCh)</sub>	rgb* <sub>dd361Mi</sub>	rgb* <sub>de361Mi</sub>	LAB* <sub>de361Mi</sub>				
272	255	258	0.0	0.25 1.0	36.8	2.2	-48.5	48.6	272	0.0	0.25 1.0	36.8	2.2	-48.5	48.6	272
273	256	258	0.0	0.233 1.0	36.6	3.2	-48.3	48.4	273	0.0	0.233 1.0	36.6	3.2	-48.3	48.4	273
274	257	259	0.0	0.216 1.0	36.4	4.1	-48.0	48.2	274	0.0	0.217 1.0	36.4	4.1	-48.0	48.2	274
276	258	260	0.0	0.2 1.0	36.1	5.1	-47.8	48.1	276	0.0	0.2 1.0	36.1	5.1	-47.8	48.1	276
277	259	261	0.0	0.183 1.0	35.9	6.1	-47.5	47.9	277	0.0	0.183 1.0	35.9	6.1	-47.5	47.9	277
278	260	262	0.0	0.166 1.0	35.6	7.0	-47.2	47.7	278	0.0	0.167 1.0	35.6	7.0	-47.2	47.7	278
279	261	263	0.0	0.15 1.0	35.4	8.0	-46.9	47.5	279	0.0	0.15 1.0	35.4	8.0	-46.9	47.5	279
280	262	264	0.0	0.133 1.0	35.2	8.9	-46.5	47.4	280	0.0	0.133 1.0	35.2	8.9	-46.5	47.4	280
282	263	265	0.0	0.116 1.0	34.9	9.9	-46.3	47.3	282	0.0	0.117 1.0	34.9	9.9	-46.3	47.3	282
283	264	266	0.0	0.1 1.0	34.5	10.9	-46.1	47.4	283	0.0	0.1 1.0	34.5	10.9	-46.1	47.4	283
284	265	267	0.0	0.083 1.0	34.2	11.9	-45.9	47.4	284	0.0	0.083 1.0	34.2	11.9	-45.9	47.4	284
285	266	268	0.0	0.066 1.0	33.9	12.9	-45.7	47.5	285	0.0	0.067 1.0	33.9	12.9	-45.7	47.5	285
287	267	269	0.0	0.049 1.0	33.5	13.9	-45.4	47.5	287	0.0	0.05 1.0	33.5	13.9	-45.4	47.5	287
288	268	269	0.0	0.033 1.0	33.2	14.9	-45.2	47.6	288	0.0	0.033 1.0	33.2	14.9	-45.2	47.6	288
289	269	270	0.0	0.016 1.0	32.9	15.9	-44.9	47.6	289	0.0	0.017 1.0	32.9	15.9	-44.9	47.6	289
290	270	271	0.0	0.0 1.0	32.5	16.9	-44.6	47.7	290	0.0	0.0 1.0	32.5	16.9	-44.6	47.7	290
291	271	272	0.016	0.0 1.0	32.4	17.8	-44.3	47.8	291	0.0	0.017 1.0	32.4	17.8	-44.3	47.8	291
293	272	273	0.033	0.0 1.0	32.3	18.7	-44.0	47.9	293	0.0	0.033 0.0 1.0	32.3	18.7	-44.0	47.9	293
294	273	274	0.05	0.0 1.0	32.1	19.6	-43.7	47.9	294	0.0	0.05 0.0 1.0	32.1	19.6	-43.7	47.9	294
295	274	275	0.066	0.0 1.0	32.0	20.5	-43.4	48.0	295	0.0	0.067 0.0 1.0	32.0	20.5	-43.4	48.0	295
296	275	276	0.083	0.0 1.0	31.9	21.4	-43.1	48.1	296	0.0	0.083 0.0 1.0	31.9	21.4	-43.1	48.1	296
297	276	277	0.1	0.0 1.0	31.8	22.3	-42.7	48.2	297	0.0	0.1 0.0 1.0	31.8	22.3	-42.7	48.2	297
298	277	278	0.116	0.0 1.0	31.6	23.1	-42.4	48.3	298	0.0	0.117 0.0 1.0	31.6	23.1	-42.4	48.3	298
299	278	279	0.133	0.0 1.0	31.5	24.1	-42.0	48.4	299	0.0	0.133 0.0 1.0	31.5	24.1	-42.0	48.4	299
300	279	280	0.15	0.0 1.0	31.4	25.0	-41.7	48.6	300	0.0	0.15 0.0 1.0	31.4	25.0	-41.7	48.6	300
302	280	281	0.166	0.0 1.0	31.4	25.9	-41.4	48.8	302	0.0	0.167 0.0 1.0	31.4	25.9	-41.4	48.8	302
303	281	282	0.183	0.0 1.0	31.3	26.8	-41.0	49.0	303	0.0	0.183 0.0 1.0	31.3	26.8	-41.0	49.0	303
304	282	283	0.2	0.0 1.0	31.2	27.8	-40.6	49.2	304	0.0	0.2 0.0 1.0	31.2	27.8	-40.6	49.2	304
305	283	284	0.216	0.0 1.0	31.1	28.7	-40.2	49.4	305	0.0	0.217 0.0 1.0	31.1	28.7	-40.2	49.4	305
306	284	285	0.233	0.0 1.0	31.1	29.6	-39.8	49.6	306	0.0	0.233 0.0 1.0	31.1	29.6	-39.8	49.6	306
307	285	285	0.25	0.0 1.0	31.0	30.5	-39.3	49.8	307	0.0	0.25 0.0 1.0	31.0	30.5	-39.3	49.8	307
309	286	286	0.266	0.0 1.0	31.4	31.6	-38.8	50.1	309	0.0	0.267 0.0 1.0	31.4	31.6	-38.8	50.1	309
310	287	287	0.283	0.0 1.0	31.8	32.6	-38.3	50.3	310	0.0	0.283 0.0 1.0	31.8	32.6	-38.3	50.3	310
311	288	288	0.3	0.0 1.0	32.3	33.6	-37.8	50.6	311	0.0	0.3 0.0 1.0	32.3	33.6	-37.8	50.6	311
312	289	289	0.316	0.0 1.0	32.7	34.7	-37.2	50.9	312	0.0	0.317 0.0 1.0	32.7	34.7	-37.2	50.9	312
314	290	290	0.333	0.0 1.0	33.1	35.7	-36.6	51.2	314	0.0	0.333 0.0 1.0	33.1	35.7	-36.6	51.2	314
315	291	291	0.35	0.0 1.0	33.6	36.7	-36.0	51.4	315	0.003	0.0 1.0	32.5	17.1	-44.5	47.7	291
316	292	292	0.366	0.0 1.0	34.0	37.7	-35.3	51.7	316	0.018	0.0 1.0	32.4	17.9	-44.2	47.8	292
317	293	293	0.383	0.0 1.0	34.4	38.5	-34.7	51.9	317	0.033	0.0 1.0	32.3	18.7	-44.0	47.9	293
318	294	294	0.4	0.0 1.0	34.8	39.2	-34.2	52.1	318	0.047	0.0 1.0	32.2	19.5	-43.7	48.0	294
319	295	295	0.416	0.0 1.0	35.2	39.9	-33.7	52.2	319	0.062	0.0 1.0	32.1	20.3	-43.5	48.1	295
320	296	296	0.433	0.0 1.0	35.6	40.5	-33.1	52.4	320	0.077	0.0 1.0	32.0	21.1	-43.2	48.1	296
321	297	297	0.45	0.0 1.0	36.0	41.2	-32.6	52.5	321	0.092	0.0 1.0	31.9	21.9	-42.9	48.2	297
322	298	298	0.466	0.0 1.0	36.4	41.8	-32.0	52.7	322	0.107	0.0 1.0	31.7	22.7	-42.5	48.3	298
323	299	299	0.483	0.0 1.0	36.8	42.5	-31.4	52.9	323	0.122	0.0 1.0	31.6	23.5	-42.2	48.4	299
324	300	300	0.5	0.0 1.0	37.2	43.1	-30.8	53.0	324	0.136	0.0 1.0	31.6	24.3	-41.9	48.5	300



vea archivos semejantes: http://130.149.60.45/~farbmetrik/SS19/SS19.HTM  
información técnica: http://www.ps.bam.de o http://130.149.60.45/~farbmetrik

TUB matrícula: 20130201-SS19/SS19L0NP.PDF /.PS  
aplicación para la medida salida de impresora láser, separacióncmyn6 (CMYK)  
TUB material: code=rh4ta



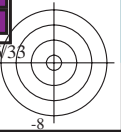
Data of Maximum color M in colorimetric system Laser printer output; separation cmyn6\*, D65 for input or output; Six hue angles of the 60 degree standard colours RYGBM<sub>s</sub>: h<sub>ab,ds</sub> = 30.0, 90.0, 150.0, 210.0, 270.0, 330.0;

Six hue angles of the device colours RYGBM<sub>d</sub>: h<sub>ab,d</sub> = 33.5, 100.6, 155.5, 235.2, 290.8, 348.9; Six hue angles of the elementary colours RYGBM<sub>e</sub>: h<sub>ab,e</sub> = 25.5, 92.3, 162.2, 217.0, 271.7, 328.6

Table with columns for device colors (hab,d, hab,s, hab,e, rrgb\*, dd361M, LAB\*, ddx361Mi (x=LabCh), ds361Mi, LAB\*, dsx361Mi (x=LabCh), rrgb\*, dd361Mi, de361Mi, LAB\*, dex361Mi (x=LabCh), rrgb\*, dd361Mi) and rows for color patches 324-354. Includes a color calibration bar on the right.

vea archivos semejantes: http://130.149.60.45/~farbmetrik/SS19/SS19.HTM información técnica: http://www.ps.bam.de o http://130.149.60.45/~farbmetrik

TUB matrícula: 20130201-SS19/SS19L0NP.PDF /.PS aplicación para la medida salida de impresora Láser, separacióncmyn6 (CMYK) TUB material: code=rh4ta



Data of Maximum color M in colorimetric system Laser printer output; separation cmy<sup>6</sup>\*, D65 for input or output; Six hue angles of the 60 degree standard colours RYGBM<sub>C</sub>; h<sub>ab,ds</sub> = 30.0, 90.0, 150.0, 210.0, 270.0, 330.0;

Six hue angles of the device colours RYGBM<sub>d</sub>; h<sub>ab,d</sub> = 33.5, 100.6, 155.5, 235.2, 290.8, 348.9; Six hue angles of the elementary colours RYGBM<sub>e</sub>; h<sub>ab,e</sub> = 25.5, 92.3, 162.2, 217.0, 271.7, 328.6

Table with 18 columns: h\_ab,d, h\_ab,s, h\_ab,e, rgb\*\_dd361M, LAB\*\_dds361M(x=LabCh), rgb\*\_ds361Mi, LAB\*\_dsx361Mi(x=LabCh), rgb\*\_dd361Mi, LAB\*\_de361Mi, LAB\*\_dex361Mi(x=LabCh), rgb\*\_dd361Mi, and three columns for rgb\*\_dd, rgb\*\_ds, and rgb\*\_de. Rows 354-393.

vea archivos semejantes: http://130.149.60.45/~farbmetrik/SS19/SS19.HTM información técnica: http://www.ps.bam.de o http://130.149.60.45/~farbmetrik

TUB matrícula: 20130201-SS19/SS19L0NP.PDF /.PS aplicación para la medida salida de impresora láser, separacióncmy<sup>6</sup> (CMYK) TUB material: code=rh4t4

vea archivos semejantes: <http://130.149.60.45/~farbmetrik/SS19/SS19.HTM>  
información técnica: <http://www.ps.bam.de> o <http://130.149.60.45/~farbmetrik>

Table with 15 columns: n/fj, HIC\*Fe, rgb\*Fe, icf\*Fe, hsi\*Fe, rgb\*Fe, LabCh\*Fe, rgb\*Fe, LabCh\*Fe, DE\*Fe, hsiMe, rgb\*Me, LabCh\*Me. It contains color calibration data for various color patches and printing conditions.

delta E\* = 14.2

gráfico TUB-SS19; 1080 colores estándar  
colores y diferencia en color, ΔE\*, 3D=0, de=1, cmyk

entrada: rgb/cmyk -> rgb\_e  
salida: transfiera a cmyk\_e

TUB matrícula: 20130201-SS19/SS19L0NP.PDF /.PS  
aplicación para la medida salida de impresora láser, separación cmykn6 (CMYK)  
TUB material: code=rh4ta

Table with columns for color names (e.g., R00Y\_100\_100e), HIC\*Fe, and various colorimetric values (rgb\*, LabCh\*, DE\*, hsiMe, rgb\*Me, LabCh\*Me) for 1080 different color patches.

delta E\* = 12.1

gráfico TUB-SS19; 1080 colores estándar colores y diferencia en color, ΔE\*, 3D=0, de=1, cmyk

entrada: rgb/cmyk -> rgb salida: transfiera a cmyke

vea archivos semejantes: http://130.149.60.45/~farbmetrik/SS19/SS19.HTM informacion técnica: http://www.ps.bam.de o http://130.149.60.45/~farbmetrik

TUB matrícula: 20130201-SS19/SS19L0NP.PDF /.PS aplicación para la medida salida de impresora láser, separacióncmykn6 (CMYK) TUB material: code=rh4ta



vea archivos semejantes: <http://130.149.60.45/~farbmetrik/SS19/SS19.L0NP.PDF /.PS>  
información técnica: <http://www.ps.bam.de> o <http://130.149.60.45/~farbmetrik>

Table with columns for color names (e.g., NW\_000, BOOR\_012\_012), color space (e.g., HIC\*Fe, rgb\*Fe), and numerical values for each color. The table is organized into multiple columns and rows, representing a color calibration chart.

delta E\* = 15.2

gráfico TUB-SS19: 1080 colores estándar  
colores y diferencia en color, ΔE\*, 3D=0, de=1, cmyk

entrada: *rgb/cmyk* → *rgb*  
salida: transfiera a *cmyk*

TUB matrícula: 20130201-SS19/SS19L0NP.PDF /.PS  
aplicación para la medida salida de impresora láser, separación cmykn6 (CMYK)

TUB material: code=rh4ta



Table with columns for color names (HIC\*Fe, rgb\*Fe, etc.) and numerical values. The table is a large grid of color and transfer data.

vea archivos semejantes: http://130.149.60.45/~farbmetrik/SS19/SS19.HTM  
información técnica: http://www.ps.bam.de o http://130.149.60.45/~farbmetrik

TUB matrícula: 20130201-SS19/SS19L0NP.PDF /.PS  
aplicación para la medida salida de impresora láser, separacióncyan6 (CMYK) TUB material: code=rh4ta

gráfico TUB-SS19; 1080 colores estándar  
colores y diferencia en color, ΔE\*, 3D=0, de=1, cmyk

entrada: rgb/cmyk -> rgb\_e  
salida: transfiera a cmyk\_e

Table with 10 columns of colorimetric data (n, HIC\*Fe, rgb\*Fe, icf\*Fe, hsi\*Fe, rgb\*Fe, LabCh\*Fe, rgb\*Fe, LabCh\*Fe, DE\*Fe, hsiMe, rgb\*Me, LabCh\*Me) and 24 rows of color patches (162-242).

delta E\* = 11.0

gráfico TUB-SS19; 1080 colores estándar colores y diferencia en color, ΔE\*, 3D=0, de=1, cmyk

entrada: rgb/cmyk -> rgb salida: transfiera a cmyk

vea archivos semejantes: http://130.149.60.45/~farbmetrik/SS19/SS19.HTM información técnica: http://www.ps.bam.de o http://130.149.60.45/~farbmetrik

TUB matrícula: 20130201-SS19/SS19L0NP.PDF /.PS aplicación para la medida salida de impresora Láser, separacióncmykn6 (CMYK) TUB material: code=rh4ta

Table with 33 columns representing color channels (HIC\*Fe, rgb\*Fe, icf\*Fe, hsi\*Fe, LabCh\*Fe, etc.) and 33 rows of color data. Includes a 'delta E\*' = 10.9' label at the bottom right of the table area.

gráfico TUB-SS19: 1080 colores estándar colores y diferencia en color, ΔE\*, 3D=0, de=1, cmyk

entrada: rgb/cmyk -> rgb salida: transfiera a cmyk

vea archivos semejantes: http://130.149.60.45/~farbmetrik/SS19/SS19.HTM información técnica: http://www.ps.bam.de o http://130.149.60.45/~farbmetrik

TUB matrícula: 20130201-SS19/SS19L0NP.PDF /.PS aplicación para la medida salida de impresora láser, separacióncmykn6 (CMYK) TUB material: code=rh4ta

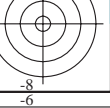
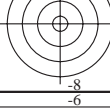








Table with columns: n, HIC\*Fe, rgb\*Fe, icf\*Fe, hsi\*Fe, rgb\*Fe, LabCh\*Fe, rgb\*Fe, LabCh\*Fe, DE\*Fe, hsi\*Me, rgb\*Me, LabCh\*Me. It contains colorimetric data for 1080 standard colors.

gráfico TUB-SS19; 1080 colores estándar colores y diferencia en color, ΔE\*, 3D=0, de=1, cmyk

entrada: rgb/cmyk -> rgb salida: transfiera a cmyke

delta E\*\* = 12.4

vea archivos semejantes: http://130.149.60.45/~farbmetrik/SS19/SS19.HTM información técnica: http://www.ps.bam.de o http://130.149.60.45/~farbmetrik

TUB matrícula: 20130201-SS19/SS19L0NP.PDF /.PS aplicación para la medida salida de impresora láser, separacióncmykn6 (CMYK) TUB material: code=rh4ta

Table with 35 columns of colorimetric data (n, HIC\*Fe, rgb\*Fe, icf\*Fe, hsi\*Fe, rgbb\*Fe, LabCh\*Fe, rrgb\*Fe, LabCh\*Fe, DE\*Fe, hsiMe, rrgb\*Me, LabCh\*Me) and 64 rows of color patches (567-647).

gráfico TUB-SS19; 1080 colores estándar colores y diferencia en color, ΔE\*, 3D=0, de=1, cmyk

entrada: rgb/cmyk -> rgb salida: transfiera a cmyk

vea archivos semejantes: http://130.149.60.45/~farbmetrik/SS19/SS19.HTM informacion técnica: http://www.ps.bam.de o http://130.149.60.45/~farbmetrik

TUB matrícula: 20130201-SS19/SS19L0NP.PDF /.PS aplicación para la medida salida de impresora Láser, separacióncmykn6 (CMYK) TUB material: code=rhata



2-0132630-F0

SS190-7N, 27/33-F

delta E\* = 13.7

2-0132630-F0

Table with 28 columns representing color channels and their differences. Columns include HIC\*Fe, rgb\*Fe, icf\*Fe, hsi\*Fe, rgb\*Me, LabCh\*Me, DE\*Fe, hsi\*Me, rgb\*Me, and LabCh\*Me. Each column contains 28 rows of numerical data. A delta E\* value of 15.8 is noted at the bottom right of the table area.

gráfico TUB-SS19; 1080 colores estándar  
colores y diferencia en color, ΔE\*, 3D=0, de=1, cmyk

entrada: rgb/cmyk -> rgb\_e  
salida: transfiera a cmyk\_e

vea archivos semejantes: http://130.149.60.45/~farbmetrik/SS19/SS19.HTM  
información técnica: http://www.ps.bam.de o http://130.149.60.45/~farbmetrik

TUB matrícula: 20130201-SS19/SS19L0NP.PDF /.PS  
aplicación para la medida salida de impresora láser, separacióncmykn6 (CMYK)



Table with columns for color names (e.g., NW\_100c, G50B\_100\_012a) and numerical values for various colorimetric parameters (HIC\*Fe, rgb\*Fe, icf\*Fe, hsi\*Fe, LabCh\*Fe, DE\*Fe, hsiMe, rgb\*Me, LabCh\*Me) across multiple rows.

delta E\* = 11.3

gráfico TUB-SS19; 1080 colores estándar colores y diferencia en color, ΔE\*, 3D=0, de=1, cmyk

entrada: rgb/cmyk -> rgb salida: transfiera a cmyk

vea archivos semejantes: http://130.149.60.45/~farbmetrik/SS19/SS19.HTM información técnica: http://www.ps.bam.de o http://130.149.60.45/~farbmetrik

TUB matrícula: 20130201-SS19/SS19L0NP.PDF /.PS aplicación para la medida salida de impresora Láser, separacióncmykn6 (CMYK) TUB material: code=rh4ta

Table with 15 columns: n, HIC\*Fe, rgb\*Fe, icf\*Fe, hsi\*Fe, rgb\*\*Fe, LabCh\*Fe, rgb\*\*Fe, LabCh\*Fe, DE\*\*Fe, hsi\*Me, rgb\*\*Me, LabCh\*Me. Rows 810-890.

gráfico TUB-SS19; 1080 colores estándar colores y diferencia en color, ΔE\*, 3D=0, de=1, cmyk

entrada: rgb/cmyk -> rgb\_e salida: transfiera a cmyk\_e

delta E\*\* = 13.2

vea archivos semejantes: http://130.149.60.45/~farbmetrik/SS19/SS19.HTM información técnica: http://www.ps.bam.de o http://130.149.60.45/~farbmetrik

TUB matrícula: 20130201-SS19/SS19L0NP.PDF /.PS aplicación para la medida salida de impresora láser, separacióncmykn6 (CMYK) TUB material: code=rh4ta

Table with 15 columns: n, HIC\*Fe, rgb\*Fe, icf\*Fe, hsi\*Fe, rgb\*Fe, LabCh\*Fe, rgb\*Fe, LabCh\*Fe, DE\*Fe, hsi\*Fe, rgb\*Me, LabCh\*Me. Rows list various color calibration targets and their corresponding colorimetric values.

2-0133030-F0

SS190-7N, 31-33-F

delta E\* = 10.5

gráfico TUB-SS19; 1080 colores estándar colores y diferencia en color, ΔE\*, 3D=0, de=1, cmyk

entrada: rgb/cmyk -> rgb salida: transfiera a cmyk

vea archivos semejantes: http://130.149.60.45/~farbmetrik/SS19/SS19.HTM información técnica: http://www.ps.bam.de o http://130.149.60.45/~farbmetrik

TUB matrícula: 20130201-SS19/SS19L0NP.PDF /.PS aplicación para la medida salida de impresora láser, separacióncmykn6 (CMYK) TUB material: code=rh4ta





vea archivos semejantes: <http://130.149.60.45/~farbmetrik/SS19/SS19.HTM>  
 información técnica: <http://www.ps.bam.de> o <http://130.149.60.45/~farbmetrik>

TUB matrícula: 20130201-SS19/SS19L0NP.PDF /.PS  
 aplicación para la medida salida de impresora láser, separación cmykn6 (CMYK)  
 TUB material: code=rh4ta

n	HIC*Fe	rgb_Fe	icf_Fe	hsi_Fe	rgb*Fe	LabCh*Fe	rgb*Fe	LabCh*Fe	DE*Fe	hsiMe	rgb*Me	LabCh*Me
1053	NW_086e	0.866 0.866 0.866	0.866 0.0 0.866	360	0.866 0.866 0.866	86.1 0.0 0.0	0.866 0.866 0.866	90.6 0.0 -0.1	266.5 4.4 360	1.0 1.0 1.0	95.8 0.0 0.0	
1054	NW_093e	0.933 0.933 0.933	0.933 0.0 0.933	360	0.933 0.933 0.933	91.0 0.0 0.0	0.933 0.933 0.933	94.4 0.0 -0.2	278.1 3.4 360	1.0 1.0 1.0	95.8 0.0 0.0	
1055	NW_100e	1.0 1.0 1.0	1.0 0.0 1.0	360	1.0 1.0 1.0	95.8 0.0 0.0	1.0 1.0 1.0	95.8 0.0 0.0	152.8 0.0 360	1.0 1.0 1.0	95.8 0.0 0.0	
1056	NW_000e	0.0 0.0 0.0	0.0 0.0 0.0	360	0.0 0.0 0.0	23.8 0.0 0.0	0.0 0.0 0.0	18.1 0.0 0.2	83.2 5.6 360	1.0 1.0 1.0	95.8 0.0 0.0	
1057	NW_006e	0.066 0.066 0.066	0.066 0.0 0.066	360	0.066 0.066 0.066	28.6 0.0 0.0	0.066 0.066 0.066	21.5 0.1 0.1	48.9 7.0 360	1.0 1.0 1.0	95.8 0.0 0.0	
1058	NW_013e	0.133 0.133 0.133	0.133 0.0 0.133	360	0.133 0.133 0.133	33.4 0.0 0.0	0.133 0.133 0.133	28.9 0.0 -0.7	268.2 4.4 360	1.0 1.0 1.0	95.8 0.0 0.0	
1059	NW_020e	0.2 0.2 0.2	0.2 0.0 0.2	360	0.2 0.2 0.2	38.2 0.0 0.0	0.2 0.2 0.2	37.3 0.0 -1.1	267.2 1.4 360	1.0 1.0 1.0	95.8 0.0 0.0	
1060	NW_026e	0.266 0.266 0.266	0.266 0.0 0.266	360	0.266 0.266 0.266	42.9 0.0 0.0	0.266 0.266 0.266	44.2 0.0 -1.1	269.1 1.7 360	1.0 1.0 1.0	95.8 0.0 0.0	
1061	NW_033e	0.333 0.333 0.333	0.333 0.0 0.333	360	0.333 0.333 0.333	47.8 0.0 0.0	0.333 0.333 0.333	49.9 0.0 -0.8	274.5 2.3 360	1.0 1.0 1.0	95.8 0.0 0.0	
1062	NW_040e	0.4 0.4 0.4	0.4 0.0 0.4	360	0.4 0.4 0.4	52.6 0.0 0.0	0.4 0.4 0.4	53.8 0.0 -0.9	273.2 1.4 360	1.0 1.0 1.0	95.8 0.0 0.0	
1063	NW_046e	0.466 0.466 0.466	0.466 0.0 0.466	360	0.466 0.466 0.466	57.3 0.0 0.0	0.466 0.466 0.466	59.7 0.0 -1.1	268.9 2.6 360	1.0 1.0 1.0	95.8 0.0 0.0	
1064	NW_053e	0.533 0.533 0.533	0.533 0.0 0.533	360	0.533 0.533 0.533	62.2 0.0 0.0	0.533 0.533 0.533	65.4 0.0 -0.9	273.1 3.3 360	1.0 1.0 1.0	95.8 0.0 0.0	
1065	NW_060e	0.6 0.6 0.6	0.6 0.0 0.6	360	0.6 0.6 0.6	67.0 0.0 0.0	0.6 0.6 0.6	70.2 0.0 -0.8	268.8 3.2 360	1.0 1.0 1.0	95.8 0.0 0.0	
1066	NW_066e	0.666 0.666 0.666	0.666 0.0 0.666	360	0.666 0.666 0.666	71.7 0.0 0.0	0.666 0.666 0.666	75.5 0.0 -0.7	271.9 3.8 360	1.0 1.0 1.0	95.8 0.0 0.0	
1067	NW_073e	0.734 0.734 0.734	0.734 0.0 0.734	360	0.734 0.734 0.734	76.6 0.0 0.0	0.734 0.734 0.734	80.8 0.0 -0.4	265.0 4.1 360	1.0 1.0 1.0	95.8 0.0 0.0	
1068	NW_08e	0.8 0.8 0.8	0.8 0.0 0.8	360	0.8 0.8 0.8	81.4 0.0 0.0	0.8 0.8 0.8	85.3 0.0 -0.3	279.5 3.9 360	1.0 1.0 1.0	95.8 0.0 0.0	
1069	NW_086e	0.866 0.866 0.866	0.866 0.0 0.866	360	0.866 0.866 0.866	86.1 0.0 0.0	0.866 0.866 0.866	90.2 0.0 0.0	252.2 4.0 360	1.0 1.0 1.0	95.8 0.0 0.0	
1070	NW_093e	0.933 0.933 0.933	0.933 0.0 0.933	360	0.933 0.933 0.933	91.0 0.0 0.0	0.933 0.933 0.933	94.2 0.0 -0.2	289.2 3.2 360	1.0 1.0 1.0	95.8 0.0 0.0	
1071	NW_100e	1.0 1.0 1.0	1.0 0.0 1.0	360	1.0 1.0 1.0	95.8 0.0 0.0	1.0 1.0 1.0	95.8 0.0 0.0	331.9 0.1 360	1.0 1.0 1.0	95.8 0.0 0.0	
1072	NW_000e	0.0 0.0 0.0	0.0 0.0 0.0	360	0.0 0.0 0.0	23.8 0.0 0.0	0.0 0.0 0.0	19.2 0.1 0.2	58.1 4.6 360	1.0 1.0 1.0	95.8 0.0 0.0	
1073	NW_100e	1.0 1.0 1.0	1.0 0.0 1.0	360	1.0 1.0 1.0	95.8 0.0 0.0	1.0 1.0 1.0	95.7 0.0 -0.2	284.6 0.2 360	1.0 1.0 1.0	95.8 0.0 0.0	
1074	R00Y_100_100e	1.0 0.0 0.0	1.0 1.0 0.5	390	1.0 0.0 0.263	47.5 56.0 26.7	1.0 0.0 0.0	47.0 56.3 40.2	69.2 35.5 13.5	375	1.0 0.0 0.263	47.5 56.0 26.7
1075	G50B_100_100e	0.0 1.0 1.0	1.0 1.0 0.5	210	0.0 1.0 0.791	54.9 -38.7 -29.1	0.0 1.0 1.0	54.9 -30.4 -42.0	51.8 234.0 15.2	198	0.0 1.0 0.791	54.9 -38.7 -29.1
1076	Y00G_100_100e	1.0 1.0 0.0	1.0 1.0 0.5	90	1.0 0.768 0.0	83.6 -3.1 76.8	1.0 1.0 0.0	91.5 -16.0 86.1	87.6 100.5 17.8	77	1.0 0.768 0.0	83.6 -3.1 76.8
1077	B00R_100_100e	0.0 0.0 1.0	1.0 1.0 0.5	270	0.0 0.261 1.0	37.3 1.4 -48.6	0.0 0.0 1.0	30.7 21.3 -44.1	49.0 295.7 21.3	255	0.0 0.261 1.0	37.3 1.4 -48.6
1078	G00B_100_100e	0.0 1.0 0.0	1.0 1.0 0.5	150	0.0 1.0 0.146	53.8 -65.9 21.1	0.0 1.0 0.0	54.6 -69.2 33.1	76.7 154.3 12.4	157	0.0 1.0 0.146	53.8 -65.9 21.1
1079	B50R_100_100e	1.0 0.0 1.0	1.0 1.0 0.5	330	0.584 0.0 1.0	38.5 46.7 -28.5	1.0 0.0 1.0	48.3 66.3 -13.8	67.7 348.1 26.3	305	0.584 0.0 1.0	38.5 46.7 -28.5

delta E\* = 6.3

2-0133230-F0

SS190-7N, 33/33-F

gráfico TUB-SS19; 1080 colores estándar  
 colores y diferencia en color,  $\Delta E^*$ , 3D=0, de=1, cmyk

entrada: *rgb/cmyk* -> *rgbe*  
 salida: transfiera a *cmyke*

2-0133230-F0