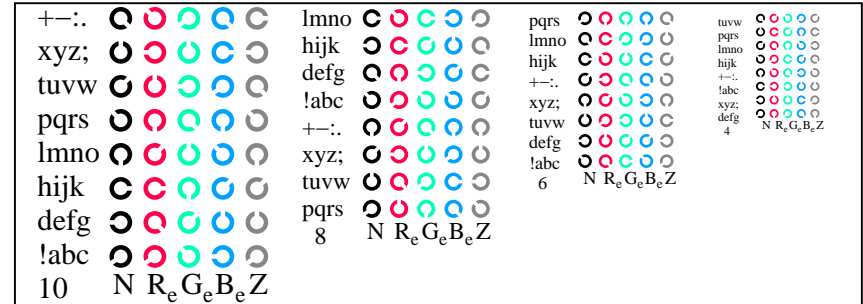
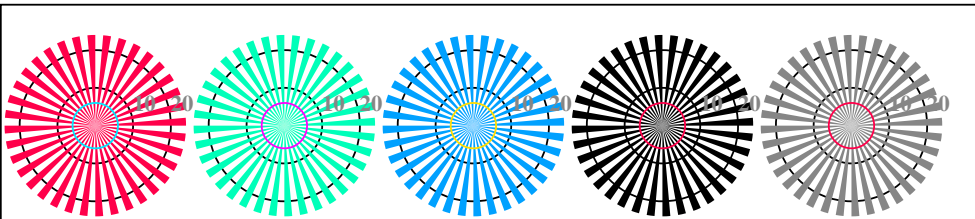


TE811-1, Picture D4We: 16 equidistant steps  $W-R_e$ ;  $W-G_e$ ;  $W-B_e$ ;  $W-N$ ;  $rgb/cmy0 \rightarrow rgb_e$  *setrgbcolor*

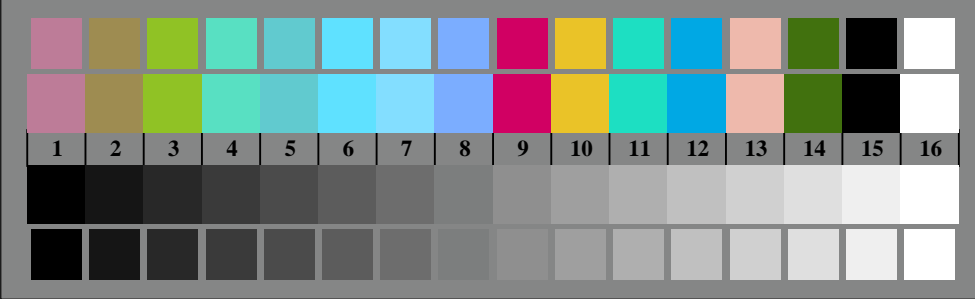


TE811-3, Picture D5We: Sript and Landolt-rings  $N$ ;  $R_e$ ;  $G_e$ ;  $B_e$ ;  $Z$ ; *PS operator rgb \rightarrow rgb\_e setrgbcolor*

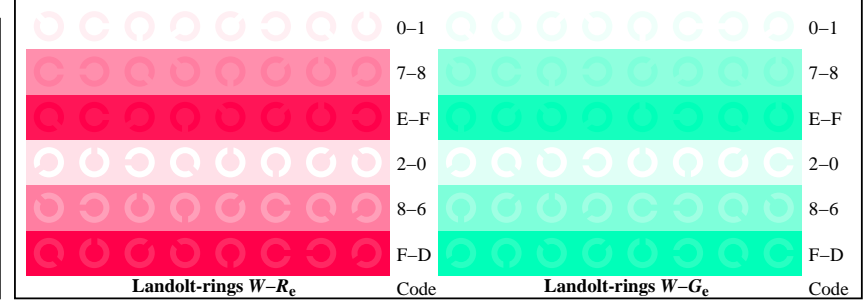


radial gratings  $W-R_e$  radial gratings  $W-G_e$  radial gratings  $W-B_e$  radial gratings  $W-N$  radial gratings  $W-Z$

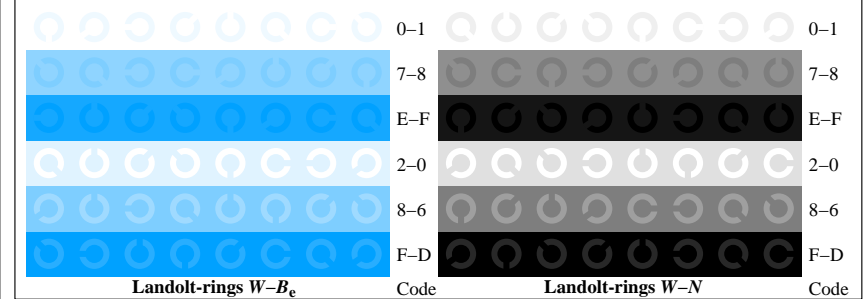
TE810-5, Picture D2We: radial gratings  $W-R_e$ ;  $W-G_e$ ;  $W-B_e$ ;  $W-N$ ; *PS operator rgb \rightarrow rgb\_e setrgbcolor*



TE810-7, Picture D3We: 14 CIE-test colours and 2 + 16 grey steps (sf);  $rgb/cmy0 \rightarrow rgb_e$  *setrgbcolor*



TE811-5, Picture D6We: Landolt-rings  $W-R_e$ ;  $W-G_e$ ; *PS operator rgb \rightarrow rgb\_e setrgbcolor*



TE811-7, Picture D7We: Landolt-rings  $W-B_e$ ;  $W-N$ ; *PS operator rgb \rightarrow rgb\_e setrgbcolor*