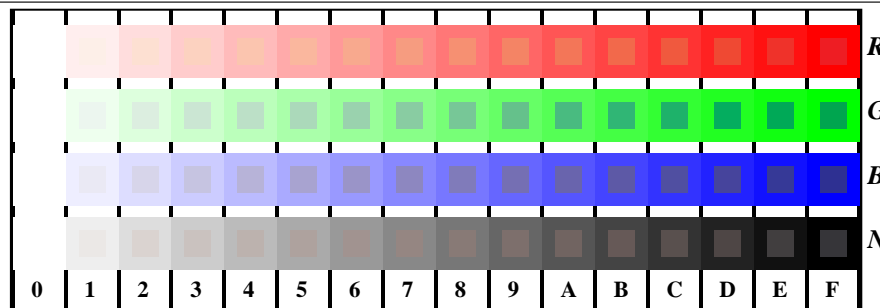


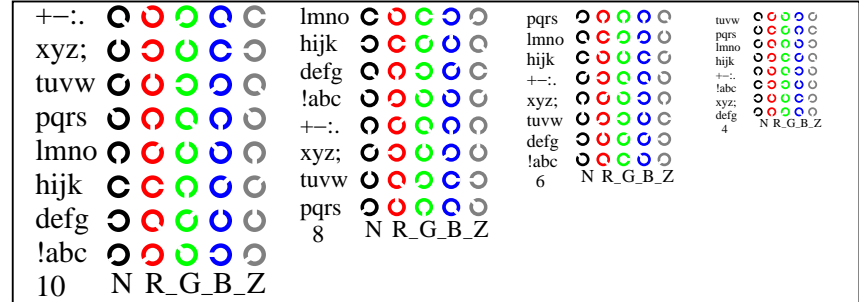
see similar files: http://130.149.60.45/~farbmetrik/TE81/TE81.HTM
technical information: http://www.ps.bam.de or http://130.149.60.45/~farbmetrik

TUB registration: 20150701-TE81/TE81LOFA.TXT /.PS
application for measurement of display output

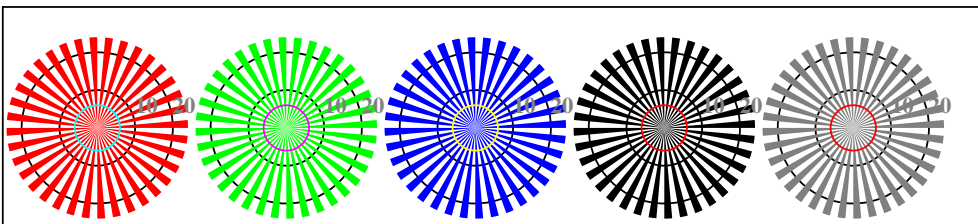
TUB material: code=rh4ta



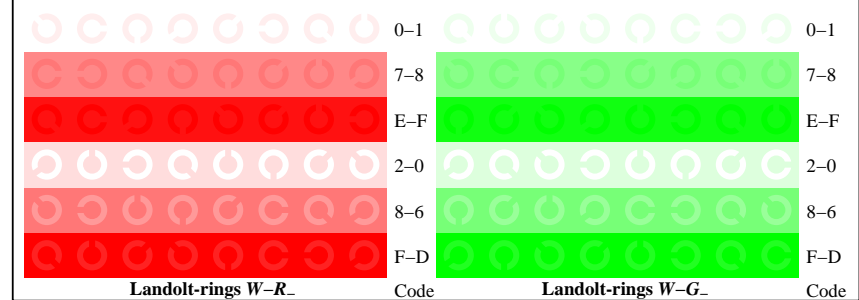
TE811-1, Picture D4W-: 16 equidistant steps W-R, W-G, W-B, W-N; rgb/cmy0 set(rgb/cmyk)color



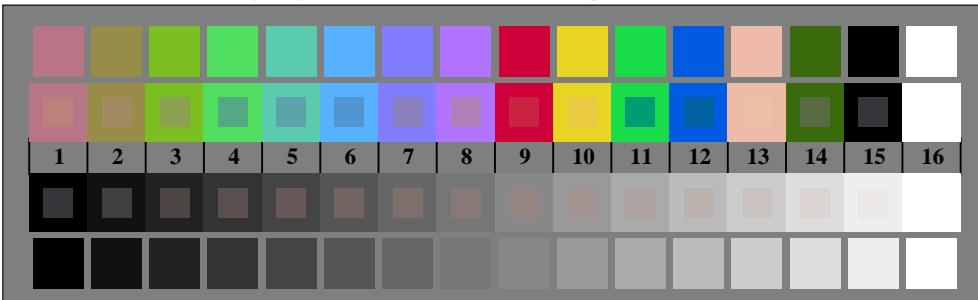
TE811-3, Picture D5W-: Sript and Landolt-rings N, R, G, B, Z; PS operator rgb->rgb_setrgbcolor



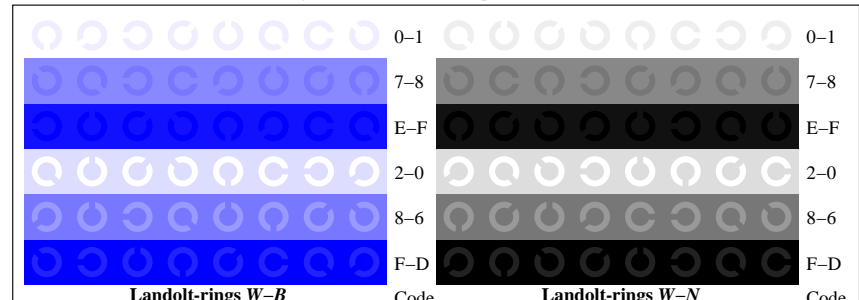
TE810-5, Picture D2W-: radial gratings W-R, W-G, W-B, W-N; PS operator rgb->rgb_setrgbcolor



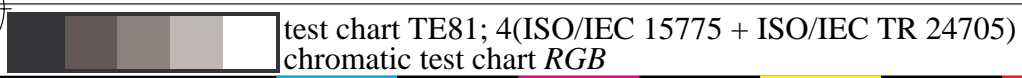
TE811-5, Picture D6W-: Landolt-rings W-R, W-G; PS operator rgb_setrgbcolor



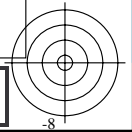
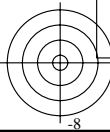
TE810-7, Picture D3W-: 14 CIE-test colours and 2 + 16 grey steps (sf); rgb/cmy0 set(rgb/cmyk)color



TE811-7, Picture D7W-: Landolt-rings W-B, W-N; PS operator rgb_setrgbcolor



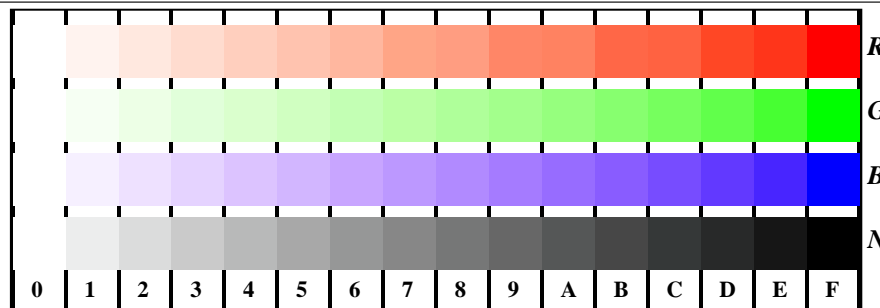
input: rgb/cmyk -> w/rgb/cmyk-
output: no change



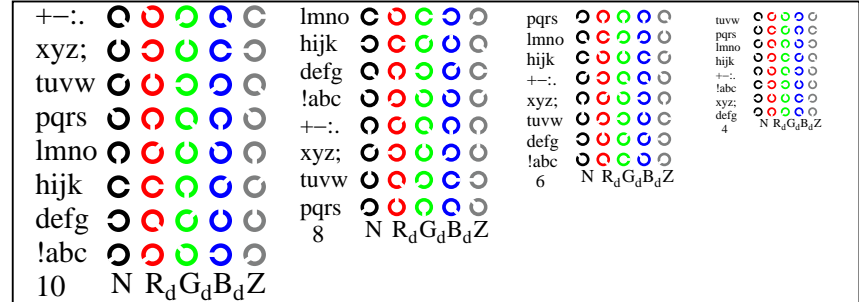
see similar files: http://130.149.60.45/~farbmetrik/TE81/TE81.HTM
technical information: http://www.ps.bam.de or http://130.149.60.45/~farbmetrik

TUB registration: 20150701-TE81/TE81L0FA.TXT /.PS
application for measurement of display output, no separation

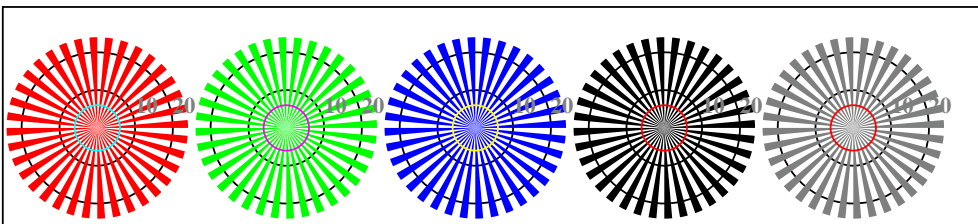
TUB material: code=rh4ta



TE811-1, Picture D4Wdd: 16 equidistant steps W-R_d; W-G_d; W-B_d; W-N; rgb/cmy0->rgb_{dd} setrgbcolor

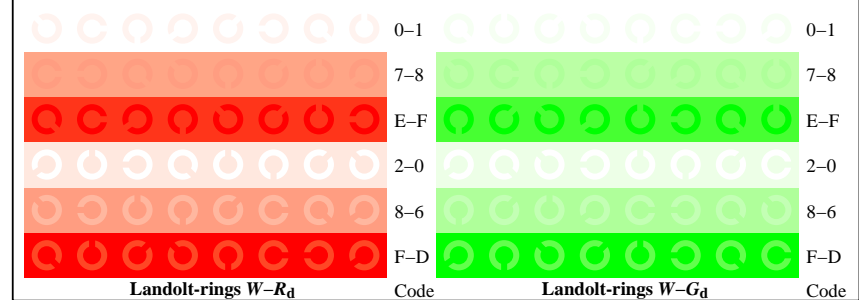


TE811-3, Picture D5Wdd: Sript and Landolt-rings N; R_d; G_d; B_d; Z; PS operator rgb->rgb_{dd} setrgbcolor

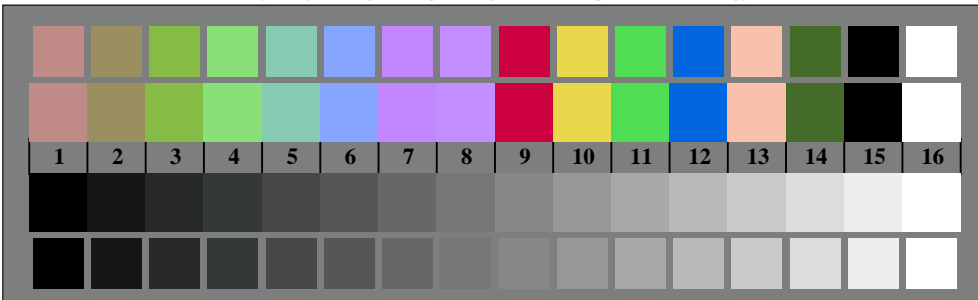


radial gratings W-R_d radial gratings W-G_d radial gratings W-B_d radial gratings W-N radial gratings W-Z

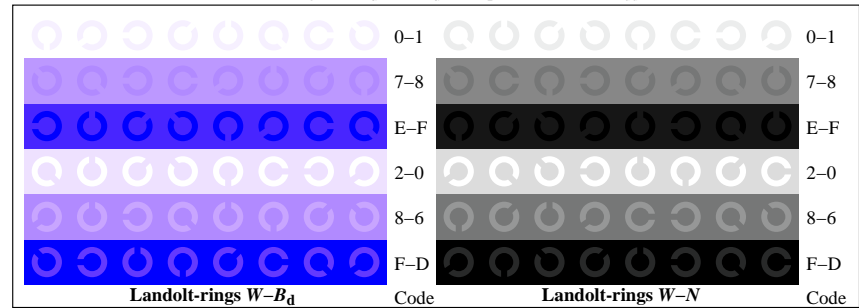
TE810-5, Picture D2Wdd: radial gratings W-R_d; W-G_d; W-B_d; W-N; PS operator rgb->rgb_{dd} setrgbcolor



TE811-5, Picture D6Wdd: Landolt-rings W-R_d; W-G_d; PS operator rgb->rgb_{dd} setrgbcolor



TE810-7, Picture D3Wdd: 14 CIE-test colours and 2 + 16 grey steps (sf); rgb/cmy0->rgb_{dd} setrgbcolor



TE811-7, Picture D7Wdd: Landolt-rings W-B_d; W-N; PS operator rgb->rgb_{dd} setrgbcolor

test chart TE81; 4(ISO/IEC 15775 + ISO/IEC TR 24705)
chromatic test chart RGB, 3D=1, de=0, sRGB*

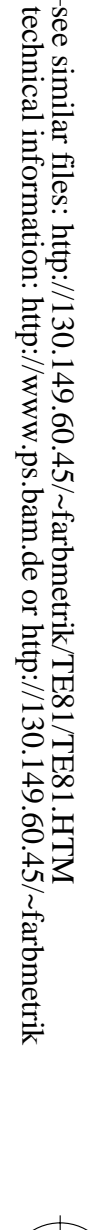
input: rgb/cmyk -> rgb_{dd}
output: 3D-linearization to rgb*_{dd}

Table with 17 columns: n, HIC*Fdd, rgb_Fdd, icf_Fdd, hsi_Fdd, rgb*Fdd, LabCh*Fdd, rgb*Fdd, LabCh*Fdd, DE*Fdd hsiMdd, rgb*Mdd, LabCh*Mdd. Rows 81-161. Includes color calibration data for various test charts.

test chart TE81; 4(ISO/IEC 15775 + ISO/IEC TR 24705)
colors and differences, ΔE*, 3D=1, de=0, sRGB*

input: rgb/cmyk -> rgbaa
output: 3D-linearization to rgb*dd

see similar files: http://130.149.60.45/~farbmetrik/TE81/TE81LOFA.TXT
technical information: http://www.ps.bam.de or http://130.149.60.45/~farbmetrik



see similar files: <http://130.149.60.45/~farbmetrik/TE81/TE81LOFA.TXT> / .PS
technical information: <http://www.ps.bam.de> or <http://130.149.60.45/~farbmetrik>

TUB registration: 20150701-TE81/TE81LOFA.TXT / .PS
application for measurement of display output, no separation
TUB material: code=rha4ta

Table with columns: n, HIC*Fdd, rgb_Fdd, icf_Fdd, hsi_Fdd, rgb**Fdd, LabCh*Fdd, rgb**Fdd, LabCh**Fdd, DE**Fdd hsiMdd, rgb**Mdd, LabCh**Mdd. It contains 242 rows of color calibration data for various color patches.

Mean color difference of this page: delta E* = 0.6

test chart TE81; 4(ISO/IEC 15775 + ISO/IEC TR 24705)
colors and differences, ΔE*, 3D=1, de=0, sRGB*

input: rgb/cmyk -> rgb_{dd}
output: 3D-linearization to rgb*_{dd}

see similar files: http://130.149.60.45/~farbmetrik/TE81/TE81.HTM
technical information: http://www.ps.bam.de or http://130.149.60.45/~farbmetrik

TUB registration: 20150701-TE81/TE81LOFA.TXT /.PS
application for measurement of display output, no separation
TUB material: code=rha4ta

Table with columns: n, HIC*Fdd, rgb_Fdd, icf_Fdd, hsi_Fdd, rgb*Fdd, LabCh*Fdd, rgb**Fdd, LabCh**Fdd, DE**Fdd hsiMdd, rgb**Mdd, LabCh**Mdd. Rows 405-485.

Mean color difference of this page: delta E** = 0.4

test chart TE81; 4(ISO/IEC 15775 + ISO/IEC TR 24705)
colors and differences, ΔE*, 3D=1, de=0, sRGB*

input: rgb/cmyk -> rgbd
output: 3D-linearization to rgb*_dd

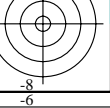
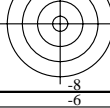
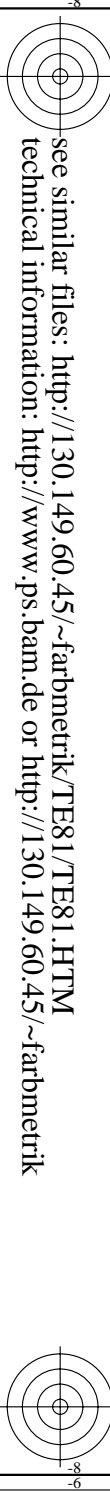


Table with 28 columns: n, HIC*Fda, rgb_Fda, icf_Fda, hsi_Fda, rgb*Fda, LabCh*Fda, rgb**Fda, LabCh**Fda, DE*Fda hsiMdd, rgb*Mdd, LabCh*Mdd. Contains 100 rows of color calibration data.

TE810-7N, Page 12/18-F

test chart TE81; 4(ISO/IEC 15775 + ISO/IEC TR 24705) colors and differences, ΔE^* , 3D=1, de=0, sRGB*

input: rgb/cmyk -> rgbaad
output: 3D-linearization to rgb**dd

Mean color difference of this page: $\Delta E^* = 0.3$

delta E** = 0.3

see similar files: http://130.149.60.45/~farbmetrik/TE81/TE81LOFA.TXT /.PS
technical information: http://www.ps.bam.de or http://130.149.60.45/~farbmetrik

TUB registration: 20150701-TE81/TE81LOFA.TXT /.PS
application for measurement of display output, no separation

TUB material: code=rha4ta

http://130.149.60.45/~farbmetrik/TE81/TE81LOFA.TXT /.PS; 3D-linearization
F: 3D-linearization TE81/TE81LE30FA.DAT in file (F), page 15/18

Table with columns: n, HIC*_Fdd, rgb*_Fdd, icf*_Fdd, hsi*_Fdd, rgb*_Fdd, LabCh*_Fdd, rgb*_Mdd, LabCh*_Mdd, DE*_Fdd hsi_Mdd, rgb*_Mdd, LabCh*_Mdd. Rows 810-890.

see similar files: http://130.149.60.45/~farbmetrik/TE81/TE81.HTM
technical information: http://www.ps.bam.de or http://130.149.60.45/~farbmetrik

TUB registration: 20150701-TE81/TE81LOFA.TXT /.PS
application for measurement of display output, no separation
TUB material: code=rh4ta

Mean color difference of this page: delta E** = 0.7

test chart TE81; 4(ISO/IEC 15775 + ISO/IEC TR 24705)
colors and differences, ΔE*, 3D=1, de=0, sRGB*

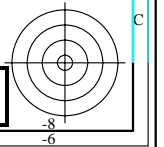
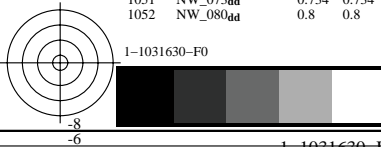
input: rgb/cmyk -> rgbd
output: 3D-linearization to rgb*_dd

TUB registration: 20150701-TE81/TE81LOFA.TXT /.PS
application for measurement of display output, no separation
TUB material: code=rha4ta

Table with columns: n, HIC*Fdd, rgb_Fdd, icf_Fdd, hsi_Fdd, rgb*Fdd, LabCh*Fdd, DE*Fdd hsiMdd, rgb*Mdd, LabCh*Mdd. It contains multiple rows of color calibration data for various color patches (e.g., 972, 973, 974, etc.) across different measurement conditions.

Mean color difference of this page: delta E* = 0.3

see similar files: http://130.149.60.45/~farbmetrik/TE81/TE81.HTM
technical information: http://www.ps.bam.de or http://130.149.60.45/~farbmetrik



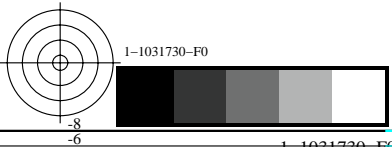
see similar files: <http://130.149.60.45/~farbmetrik/TE81/TE81.HTM>
 technical information: <http://www.ps.bam.de> or <http://130.149.60.45/~farbmetrik>

TUB registration: 20150701-TE81/TE81LOFA.TXT /.PS
 application for measurement of display output, no separation

TUB material: code=rh4ta

n	HIC*Fdd	rgb_Fdd	icf_Fdd	hsi_Fdd	rgb*Fdd	LabCh*Fdd	rgb*Fdd	LabCh*Fdd	DE**Fdd hsiMdd	rgb*Mdd	LabCh*Mdd
1053	NW_086da	0.866 0.866 0.866	0.866 0.0 0.866	360	0.866 0.866 0.866	82.6 0.0 0.0	0.847 0.85 0.85	82.5 -0.1 0.0 0.1	209.2 0.2 360	1.0 1.0 1.0	95.4 0.0 0.0
1054	NW_093da	0.933 0.933 0.933	0.933 0.0 0.933	360	0.933 0.933 0.933	89.0 0.0 0.0	0.921 0.924 0.924	88.9 -0.2 -0.1 0.2	207.0 0.2 360	1.0 1.0 1.0	95.4 0.0 0.0
1055	NW_100da	1.0 1.0 1.0	1.0 0.0 1.0	360	1.0 1.0 1.0	95.4 0.0 0.0	1.0 1.0 1.0	95.4 0.0 0.0 0.0	325.2 0.0 360	1.0 1.0 1.0	95.4 0.0 0.0
1056	NW_000da	0.0 0.0 0.0	0.0 0.0 0.0	360	0.0 0.0 0.0	0.0 0.0 0.0	0.0 0.0 0.0	0.0 0.0 0.0 0.0	0.0 0.0 360	1.0 1.0 1.0	95.4 0.0 0.0
1057	NW_006da	0.066 0.066 0.066	0.066 0.0 0.066	360	0.066 0.066 0.066	6.2 0.0 0.0	0.068 0.07 0.07	6.2 -0.1 0.0 0.1	215.3 1.5 360	1.0 1.0 1.0	95.4 0.0 0.0
1058	NW_013da	0.133 0.133 0.133	0.133 0.0 0.133	360	0.133 0.133 0.133	12.6 0.0 0.0	0.134 0.138 0.138	12.6 -0.5 -0.1 0.5	198.8 0.5 360	1.0 1.0 1.0	95.4 0.0 0.0
1059	NW_020da	0.2 0.2 0.2	0.2 0.0 0.2	360	0.2 0.2 0.2	19.0 0.0 0.0	0.181 0.193 0.193	18.7 -1.1 -0.4 1.2	202.3 1.3 360	1.0 1.0 1.0	95.4 0.0 0.0
1060	NW_026da	0.266 0.266 0.266	0.266 0.0 0.266	360	0.266 0.266 0.266	25.3 0.0 0.0	0.25 0.251 0.251	25.4 0.0 0.0 0.0	198.2 0.1 360	1.0 1.0 1.0	95.4 0.0 0.0
1061	NW_033da	0.333 0.333 0.333	0.333 0.0 0.333	360	0.333 0.333 0.333	31.7 0.0 0.0	0.303 0.311 0.311	31.6 -0.7 -0.3 0.8	203.1 0.8 360	1.0 1.0 1.0	95.4 0.0 0.0
1062	NW_040da	0.4 0.4 0.4	0.4 0.0 0.4	360	0.4 0.4 0.4	38.1 0.0 0.0	0.374 0.374 0.374	38.2 0.0 0.0 0.0	217.7 0.1 360	1.0 1.0 1.0	95.4 0.0 0.0
1063	NW_046da	0.466 0.466 0.466	0.466 0.0 0.466	360	0.466 0.466 0.466	44.4 0.0 0.0	0.431 0.437 0.437	44.4 -0.5 -0.2 0.5	203.8 0.5 360	1.0 1.0 1.0	95.4 0.0 0.0
1064	NW_053da	0.533 0.533 0.533	0.533 0.0 0.533	360	0.533 0.533 0.533	50.8 0.0 0.0	0.503 0.504 0.504	51.0 0.0 0.0 0.0	222.6 0.1 360	1.0 1.0 1.0	95.4 0.0 0.0
1065	NW_060da	0.6 0.6 0.6	0.6 0.0 0.6	360	0.6 0.6 0.6	57.2 0.0 0.0	0.564 0.569 0.569	57.1 -0.3 -0.1 0.4	204.7 0.4 360	1.0 1.0 1.0	95.4 0.0 0.0
1066	NW_066da	0.666 0.666 0.666	0.666 0.0 0.666	360	0.666 0.666 0.666	63.5 0.0 0.0	0.634 0.635 0.635	63.3 -0.1 0.0 0.1	207.4 0.2 360	1.0 1.0 1.0	95.4 0.0 0.0
1067	NW_073da	0.734 0.734 0.734	0.734 0.0 0.734	360	0.734 0.734 0.734	70.0 0.0 0.0	0.703 0.706 0.707	69.8 -0.3 -0.1 0.3	205.7 0.4 360	1.0 1.0 1.0	95.4 0.0 0.0
1068	NW_080da	0.8 0.8 0.8	0.8 0.0 0.8	360	0.8 0.8 0.8	76.3 0.0 0.0	0.775 0.778 0.778	76.1 -0.1 0.0 0.2	206.4 0.2 360	1.0 1.0 1.0	95.4 0.0 0.0
1069	NW_086da	0.866 0.866 0.866	0.866 0.0 0.866	360	0.866 0.866 0.866	82.6 0.0 0.0	0.847 0.85 0.85	82.5 -0.1 0.0 0.1	209.2 0.2 360	1.0 1.0 1.0	95.4 0.0 0.0
1070	NW_093da	0.933 0.933 0.933	0.933 0.0 0.933	360	0.933 0.933 0.933	89.0 0.0 0.0	0.921 0.924 0.924	88.9 -0.2 -0.1 0.2	207.0 0.2 360	1.0 1.0 1.0	95.4 0.0 0.0
1071	NW_100da	1.0 1.0 1.0	1.0 0.0 1.0	360	1.0 1.0 1.0	95.4 0.0 0.0	1.0 1.0 1.0	95.4 0.0 0.0 0.0	325.2 0.0 360	1.0 1.0 1.0	95.4 0.0 0.0
1072	NW_000da	0.0 0.0 0.0	0.0 0.0 0.0	360	0.0 0.0 0.0	0.0 0.0 0.0	0.0 0.0 0.0	0.0 0.0 0.0 0.0	0.0 0.0 360	1.0 1.0 1.0	95.4 0.0 0.0
1073	NW_100da	1.0 1.0 1.0	1.0 0.0 1.0	360	1.0 1.0 1.0	95.4 0.0 0.0	1.0 1.0 1.0	95.4 0.0 0.0 0.0	325.2 0.0 360	1.0 1.0 1.0	95.4 0.0 0.0
1074	ROOY_100_100da	1.0 0.0 0.0	1.0 1.0 0.5	390	1.0 0.0 0.0	50.4 76.9 64.5 100.4 40.0	1.0 0.0 0.0	50.4 76.9 64.5 100.4	39.9 0.0 389	1.0 0.0 0.0	50.4 76.9 64.5 100.4 40.0
1075	G50B_100_100da	0.0 1.0 1.0	1.0 1.0 0.5	210	0.0 1.0 1.0	86.8 -46.1 -13.5 48.1 196.3	0.0 1.0 1.0	86.8 -46.1 -13.5 48.1	196.3 0.0 210	0.0 1.0 1.0	86.8 -46.1 -13.5 48.1 196.3
1076	Y00G_100_100da	1.0 1.0 0.0	1.0 1.0 0.5	90	1.0 1.0 0.0	92.6 -20.7 90.7 93.0 102.8	1.0 1.0 0.0	92.6 -20.6 90.7 93.0	102.8 0.0 89	1.0 1.0 0.0	92.6 -20.7 90.7 93.0 102.8
1077	B00R_100_100da	0.0 0.0 1.0	1.0 1.0 0.5	270	0.0 0.0 1.0	30.3 76.0 -103.5 128.5 306.2	0.0 0.0 1.0	30.3 76.0 -103.5 128.5	306.2 0.0 270	0.0 0.0 1.0	30.3 76.0 -103.5 128.5 306.2
1078	G00B_100_100da	0.0 1.0 0.0	1.0 1.0 0.5	150	0.0 1.0 0.0	83.6 -82.7 79.8 115.0 136.0	0.0 0.999 0.0	83.6 -82.7 79.8 115.0	136.0 0.0 149	0.0 1.0 0.0	83.6 -82.7 79.8 115.0 136.0
1079	B50R_100_100da	1.0 0.0 1.0	1.0 1.0 0.5	330	1.0 0.0 1.0	57.2 94.3 -58.4 110.9 328.2	1.0 0.0 1.0	57.2 94.3 -58.4 111.0	328.2 0.0 330	1.0 0.0 1.0	57.2 94.3 -58.4 110.9 328.2

Mean color difference of this page: $\Delta E^*_{ab} = 0.2$



test chart TE81; 4(ISO/IEC 15775 + ISO/IEC TR 24705)
 colors and differences, ΔE^*_{ab} , 3D=1, de=0, sRGB*

input: *rgb/cmyk* -> *rgb_{dd}*
 output: 3D-linearization to *rgb*_{dd}*

