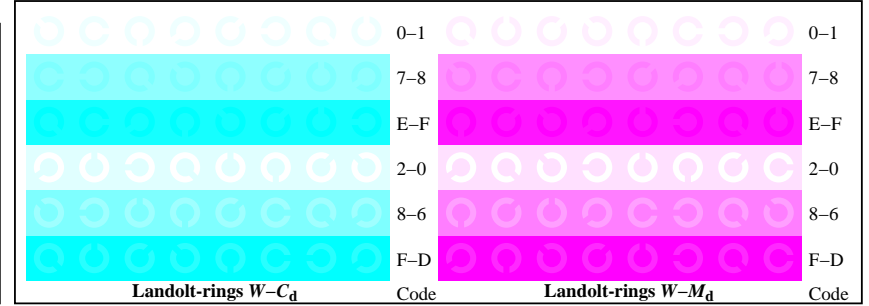


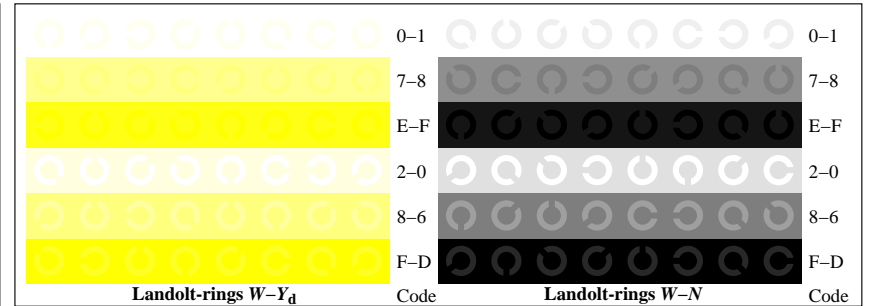
TE921-1, Picture B4Wd: 16 equidistant steps  $W-C_d$ ;  $W-M_d$ ;  $W-Y_d$ ;  $W-N$ ;  $rgb/cmy0 \rightarrow rgb_d$  setrgbcolor

+-:.					lmno					pqrs					tuvw				
xyz;					hijk					lmno					lmno				
tuvw					defg					hijk					+-:.				
pqrs					!abc					xyz;					tuvw				
lmno					+-:.					defg					!abc				
hijk					xyz;					tuvw					6	$N C_d M_d Y_d Z$			
defg					!abc					pqrs					8	$N C_d M_d Y_d Z$			
10	$N C_d M_d Y_d Z$																		

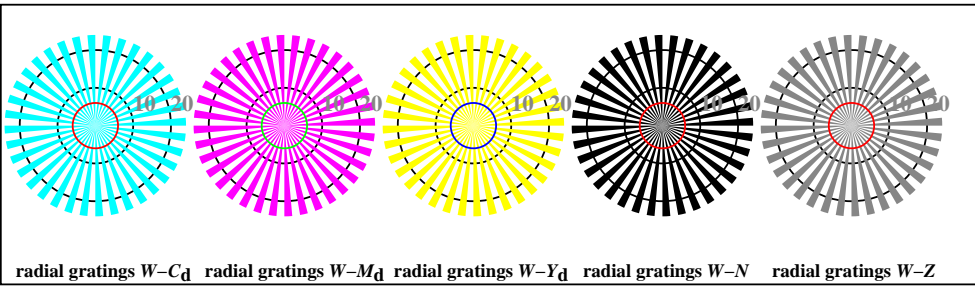
TE921-3, Picture B5Wd: Sript and Landolt-rings  $N$ ;  $C_d$ ;  $M_d$ ;  $Y_d$ ;  $Z$ ;  $PS$  operator  $rgb \rightarrow rgb_d$  setrgbcolor



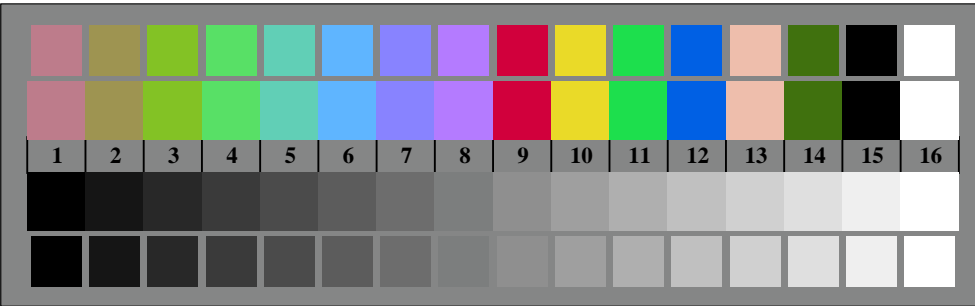
TE921-5, Picture B6Wd: Landolt-rings  $W-C_d$ ;  $W-M_d$ ;  $PS$  operator  $rgb \rightarrow rgb_d$  setrgbcolor



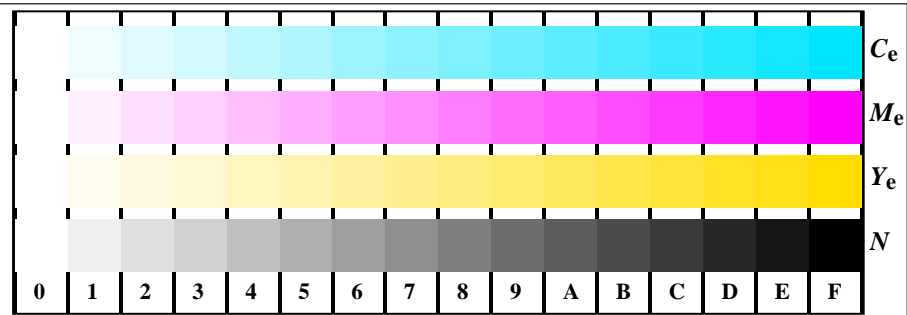
TE921-7, Picture B7Wd: Landolt-rings  $W-Y_d$ ;  $W-N$ ;  $PS$  operator  $rgb \rightarrow rgb_d$  setrgbcolor



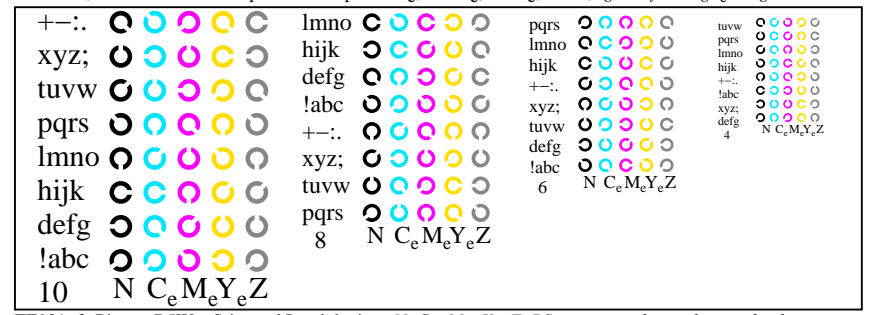
TE920-5, Picture B2Wd: radial gratings  $W-C_d$ ;  $W-M_d$ ;  $W-Y_d$ ;  $W-N$ ;  $PS$  operator  $rgb \rightarrow rgb_d$  setrgbcolor



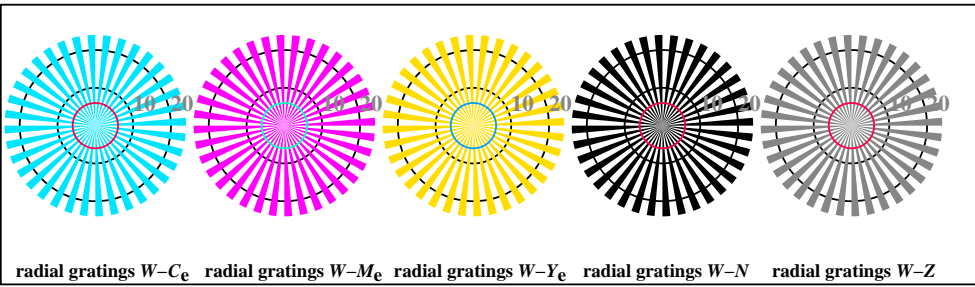
TE920-7, Picture B3Wd: 14 CIE-test colours and 2 + 16 grey steps (sf);  $rgb/cmy0 \rightarrow rgb_d$  setrgbcolor



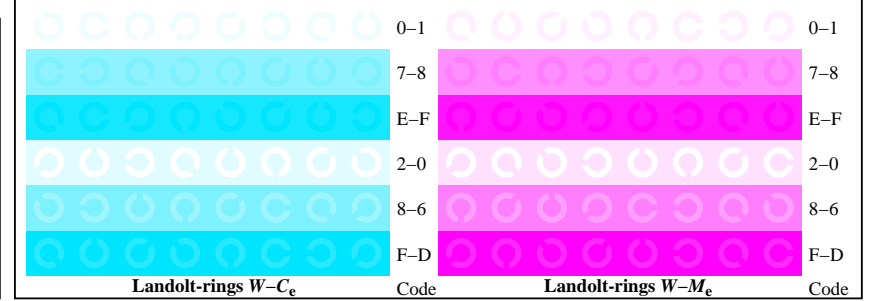
TE921-1, Picture B4We: 16 equidistant steps  $W-C_e$ ;  $W-M_e$ ;  $W-Y_e$ ;  $W-N$ ;  $rgb/cmy_0 \rightarrow rgb_e$  setrgbcolor



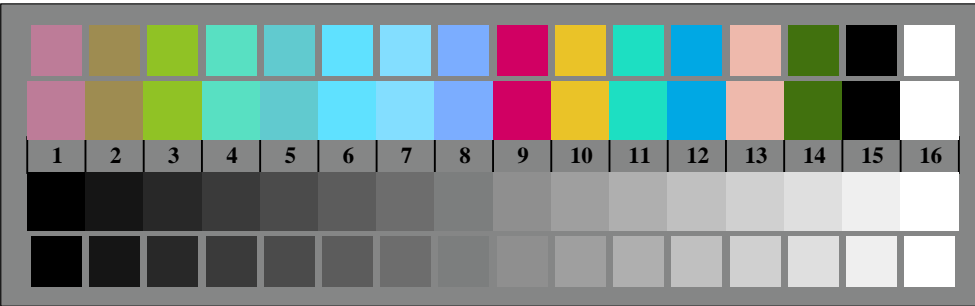
TE921-3, Picture B5We: Sript and Landolt-rings  $N$ ;  $C_e$ ;  $M_e$ ;  $Y_e$ ;  $Z$ ; PS operator  $rgb \rightarrow rgb_e$  setrgbcolor



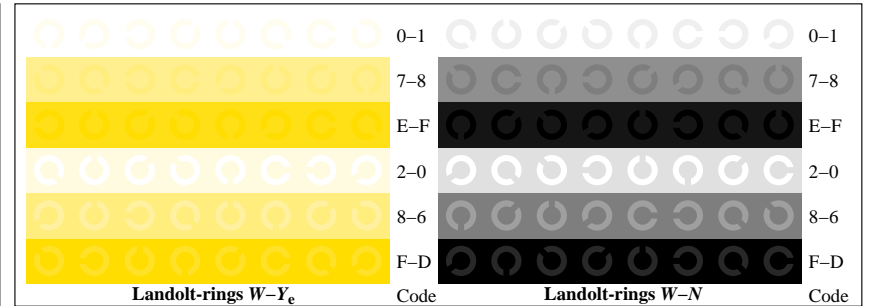
TE920-5, Picture B2We: radial gratings  $W-C_e$ ;  $W-M_e$ ;  $W-Y_e$ ;  $W-N$ ; PS operator  $rgb \rightarrow rgb_e$  setrgbcolor



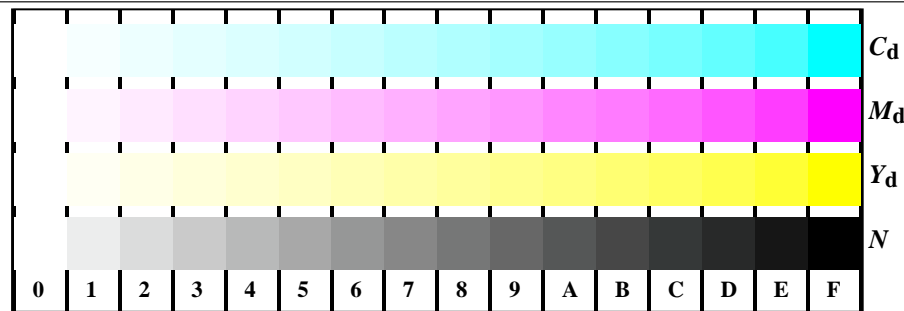
TE921-5, Picture B6We: Landolt-rings  $W-C_e$ ;  $W-M_e$ ; PS operator  $rgb \rightarrow rgb_e$  setrgbcolor



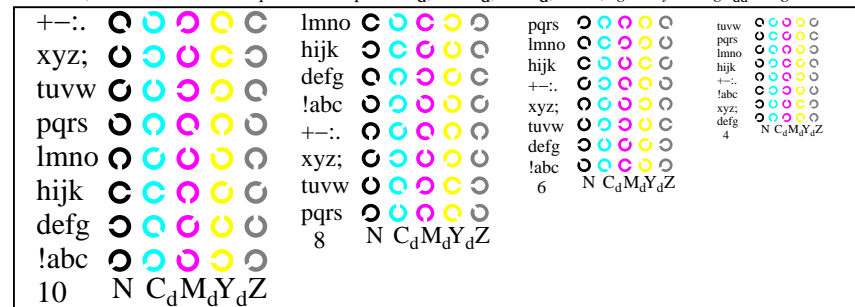
TE920-7, Picture B3We: 14 CIE-test colours and 2 + 16 grey steps (sf);  $rgb/cmy_0 \rightarrow rgb_e$  setrgbcolor



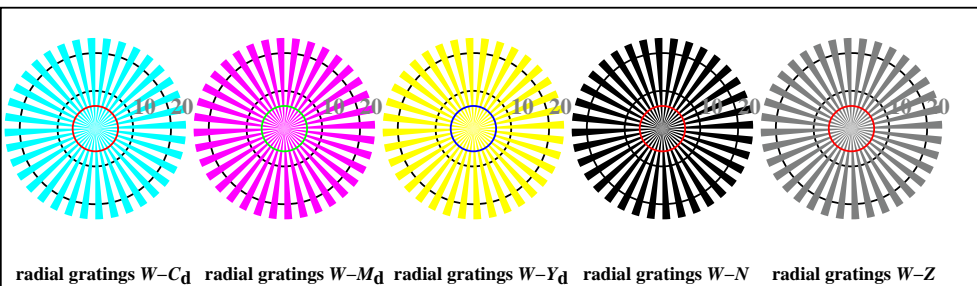
TE921-7, Picture B7We: Landolt-rings  $W-Y_e$ ;  $W-N$ ; PS operator  $rgb \rightarrow rgb_e$  setrgbcolor



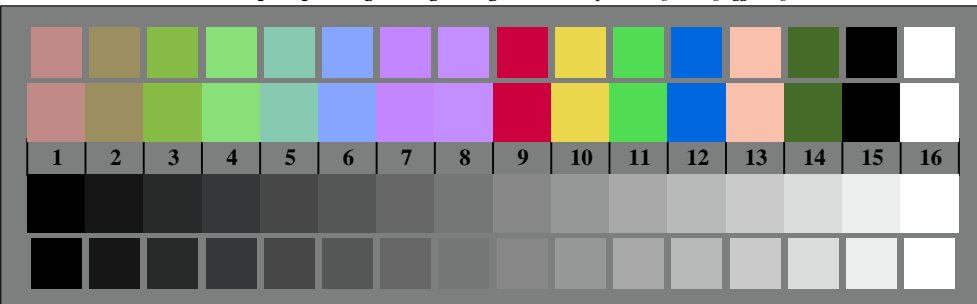
TE921-1, Picture B4Wdd: 16 equidistant steps  $W-C_d$ ;  $W-M_d$ ;  $W-Y_d$ ;  $W-N$ ;  $rgb/cmy0 \rightarrow rgb_{dd}$  *setrgbcolor*



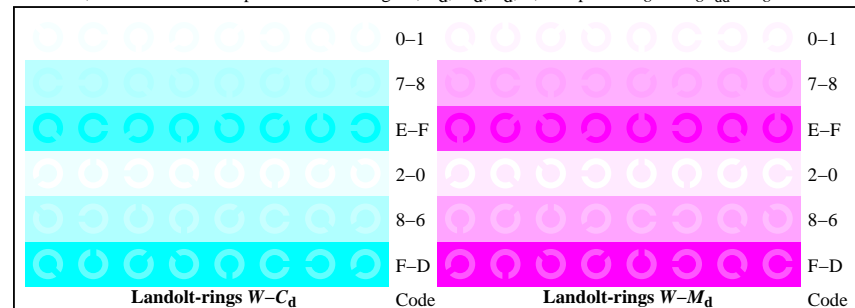
TE921-3, Picture B5Wdd: Sript and Landolt-rings  $N$ ;  $C_d$ ;  $M_d$ ;  $Y_d$ ;  $Z$ ; *PS operator rgb \rightarrow rgb\_{dd} setrgbcolor*



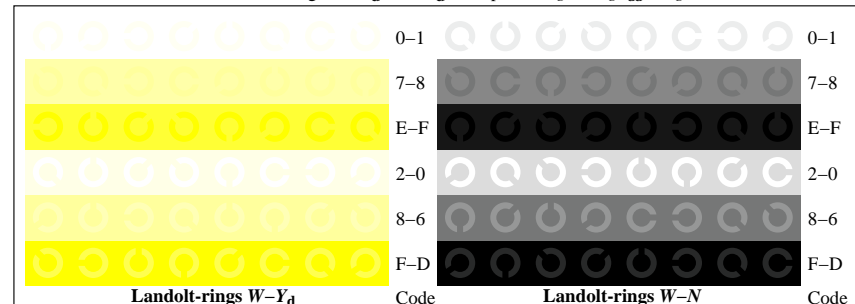
TE920-5, Picture B2Wdd: radial gratings  $W-C_d$ ;  $W-M_d$ ;  $W-Y_d$ ;  $W-N$ ; *PS operator rgb \rightarrow rgb\_{dd} setrgbcolor*



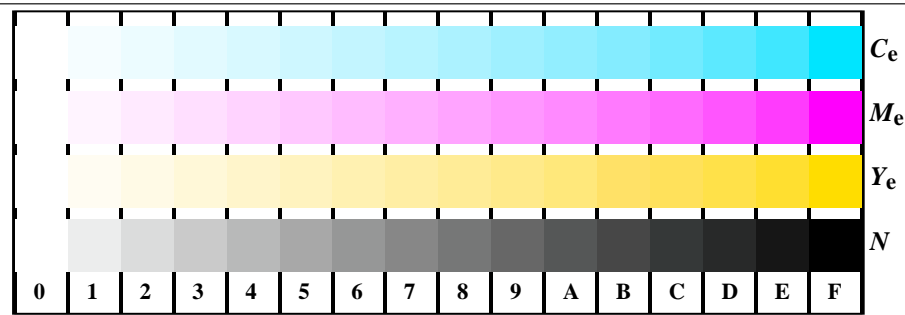
TE920-7, Picture B3Wdd: 14 CIE-test colours and 2 + 16 grey steps (sf);  $rgb/cmy0 \rightarrow rgb_{dd}$  *setrgbcolor*



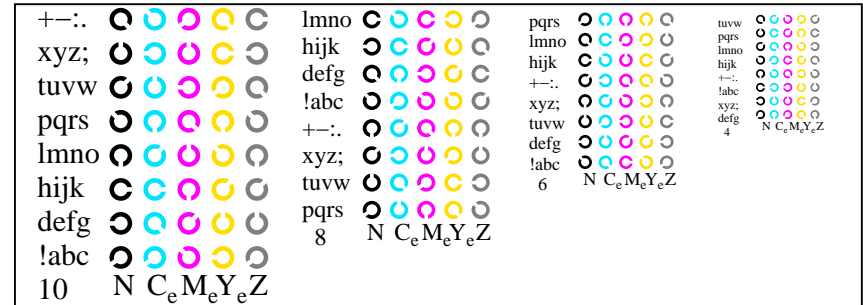
TE921-5, Picture B6Wdd: Landolt-rings  $W-C_d$ ;  $W-M_d$ ; *PS operator rgb \rightarrow rgb\_{dd} setrgbcolor*



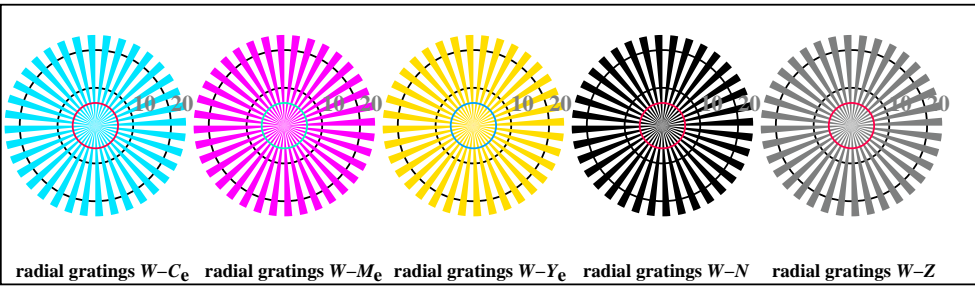
TE921-7, Picture B7Wdd: Landolt-rings  $W-Y_d$ ;  $W-N$ ; *PS operator rgb \rightarrow rgb\_{dd} setrgbcolor*



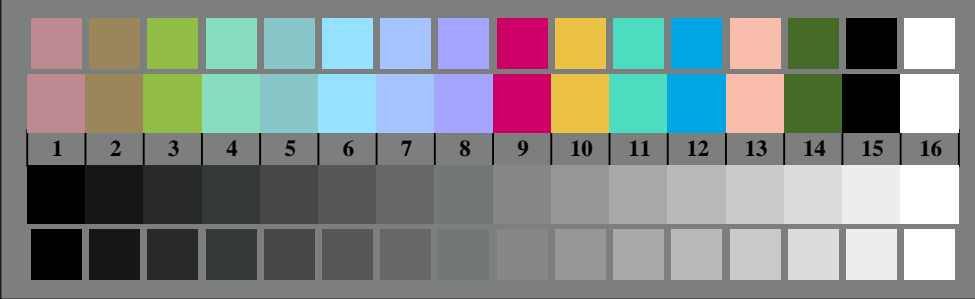
TE921-1, Picture B4Wde: 16 equidistant steps  $W-C_e$ ;  $W-M_e$ ;  $W-Y_e$ ;  $W-N$ ;  $rgb/cmy0 \rightarrow rgb_{de}$  *setrgbcolor*



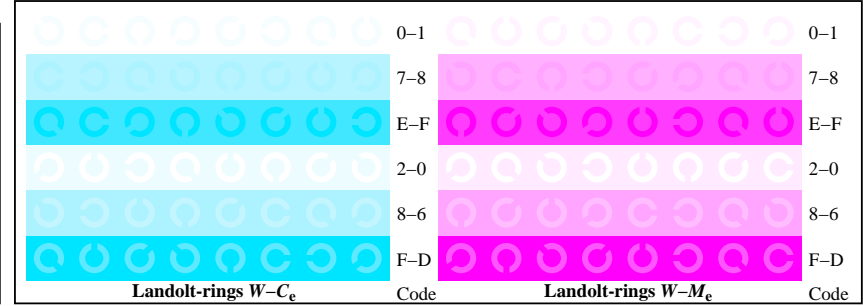
TE921-3, Picture B5Wde: Sript and Landolt-rings  $N$ ;  $C_e$ ;  $M_e$ ;  $Y_e$ ;  $Z$ ; *PS operator*  $rgb \rightarrow rgb_{de}$  *setrgbcolor*



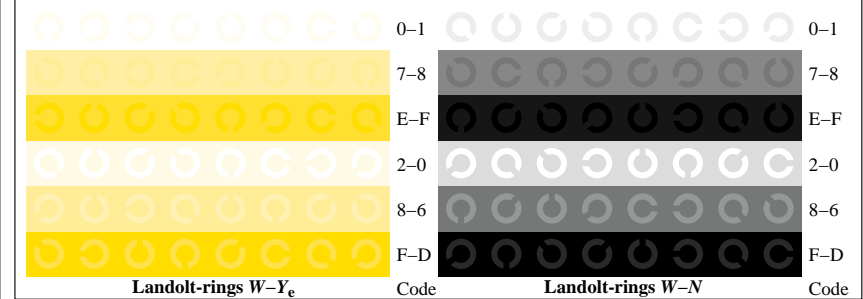
TE920-5, Picture B2Wde: radial gratings  $W-C_e$ ;  $W-M_e$ ;  $W-Y_e$ ;  $W-N$ ; *PS operator*  $rgb \rightarrow rgb_{de}$  *setrgbcolor*



TE920-7, Picture B3Wde: 14 CIE-test colours and 2 + 16 grey steps (sf);  $rgb/cmy0 \rightarrow rgb_{de}$  *setrgbcolor*



TE921-5, Picture B6Wde: Landolt-rings  $W-C_e$ ;  $W-M_e$ ; *PS operator*  $rgb \rightarrow rgb_{de}$  *setrgbcolor*



TE921-7, Picture B7Wde: Landolt-rings  $W-Y_e$ ;  $W-N$ ; *PS operator*  $rgb \rightarrow rgb_{de}$  *setrgbcolor*