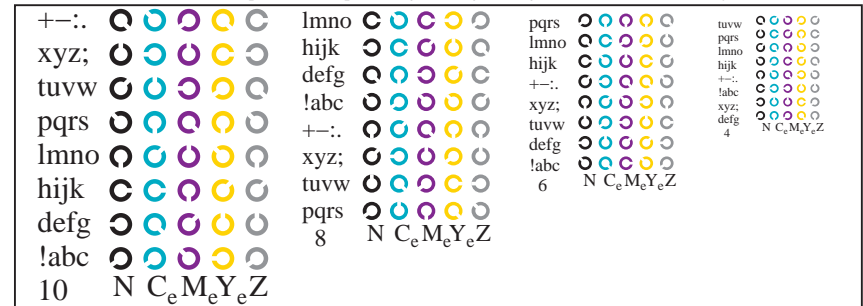
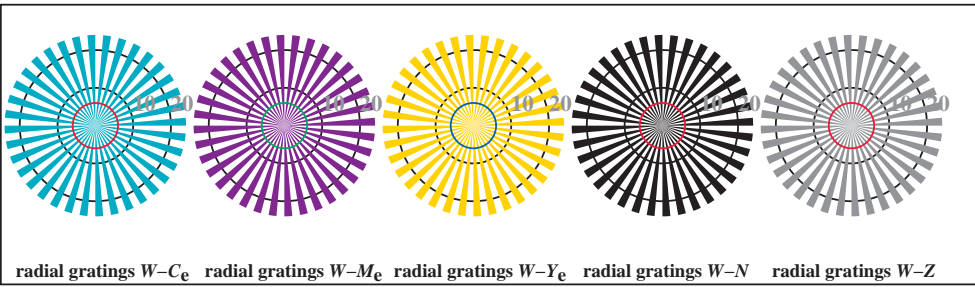


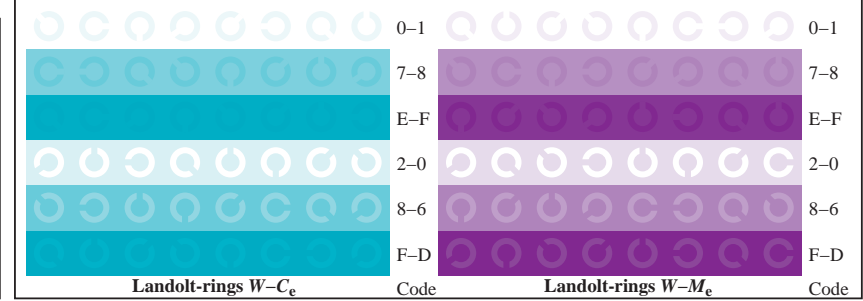
TE951-1, Picture B4We: 16 equidistant steps $W-C_e$; $W-M_e$; $W-Y_e$; $W-N$; $rgb/cmy0 \rightarrow rgb_e$ *setrgbcolor*



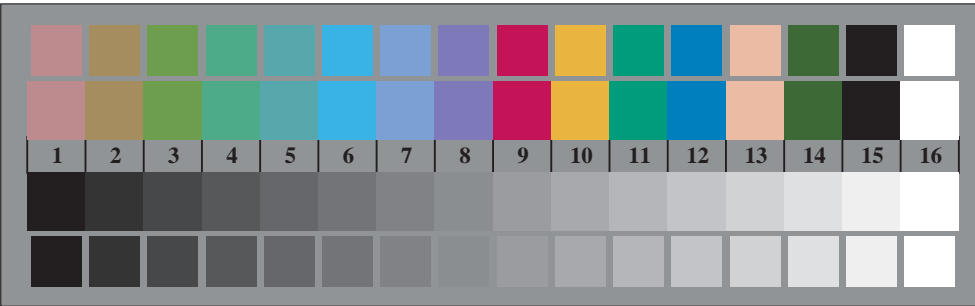
TE951-3, Picture B5We: Script and Landolt-rings N ; C_e ; M_e ; Y_e ; Z ; *PS operator rgb \rightarrow rgb_e setrgbcolor*



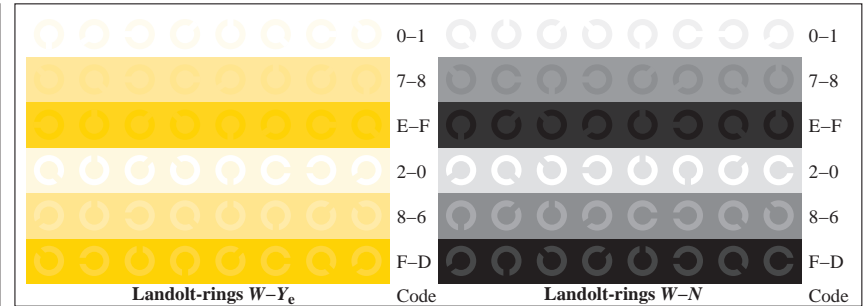
TE950-5, Picture B2We: radial gratings $W-C_e$; $W-M_e$; $W-Y_e$; $W-N$; *PS operator rgb \rightarrow rgb_e setrgbcolor*



TE951-5, Picture B6We: Landolt-rings $W-C_e$; $W-M_e$; *PS operator rgb \rightarrow rgb_e setrgbcolor*



TE950-7, Picture B3We: 14 CIE-test colours and 2 + 16 grey steps (sf); $rgb/cmy0 \rightarrow rgb_e$ *setrgbcolor*



TE951-7, Picture B7We: Landolt-rings $W-Y_e$; $W-N$; *PS operator rgb \rightarrow rgb_e setrgbcolor*