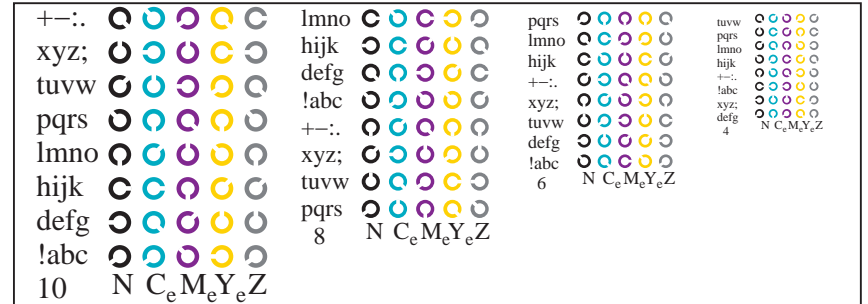
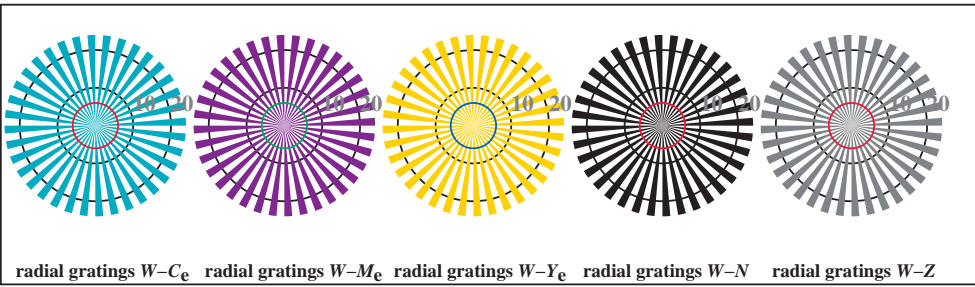


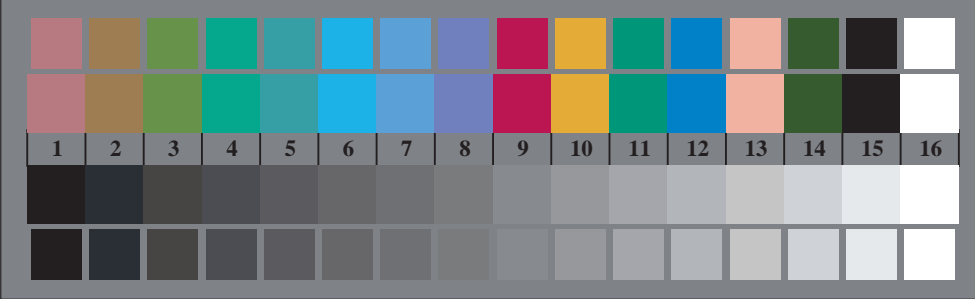
TE951-1, Picture B4Wde: 16 equidistant steps $W-C_e$; $W-M_e$; $W-Y_e$; $W-N$; $rgb/cmy0 \rightarrow rgb_{de}$ *setrgbcolor*



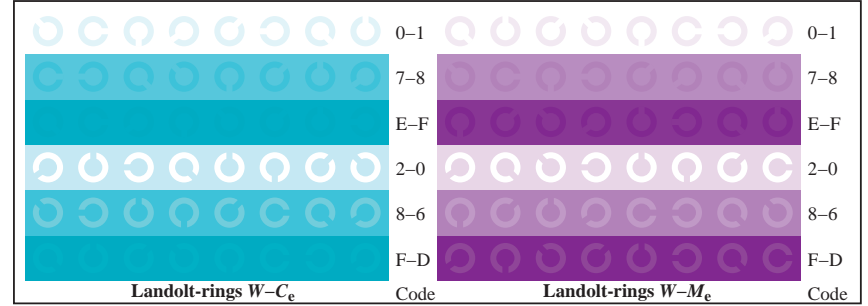
TE951-3, Picture B5Wde: Script and Landolt-rings N ; C_e ; M_e ; Y_e ; Z ; *PS operator rgb \rightarrow rgb_{de}* *setrgbcolor*



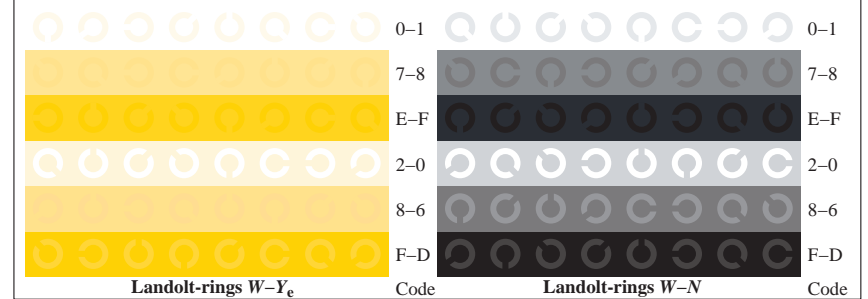
TE950-5, Picture B2Wde: radial gratings $W-C_e$; $W-M_e$; $W-Y_e$; $W-N$; *PS operator rgb \rightarrow rgb_{de}* *setrgbcolor*



TE950-7, Picture B3Wde: 14 CIE-test colours and 2 + 16 grey steps (sf); $rgb/cmy0 \rightarrow rgb_{de}$ *setrgbcolor*



TE951-5, Picture B6Wde: Landolt-rings $W-C_e$; $W-M_e$; *PS operator rgb \rightarrow rgb_{de}* *setrgbcolor*



TE951-7, Picture B7Wde: Landolt-rings $W-Y_e$; $W-N$; *PS operator rgb \rightarrow rgb_{de}* *setrgbcolor*