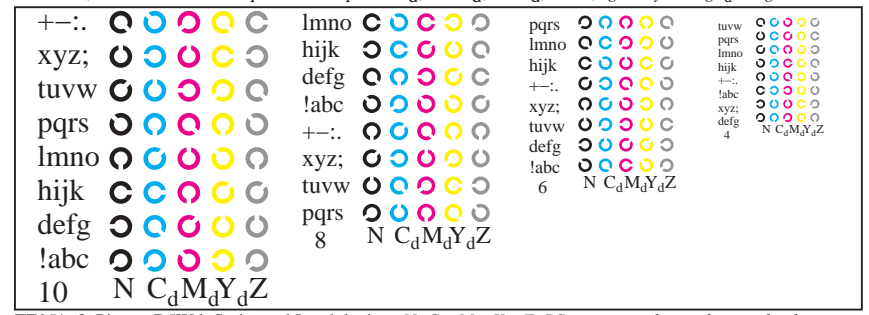
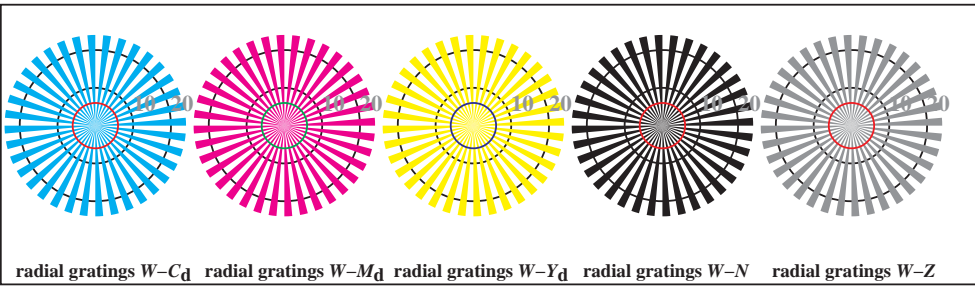


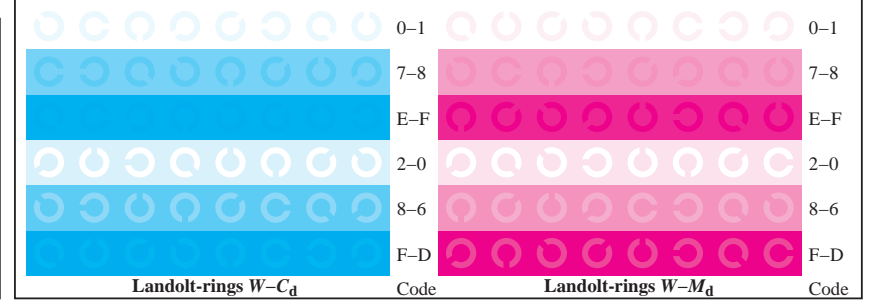
TE951-1, Picture B4Wd: 16 equidistant steps $W-C_d$; $W-M_d$; $W-Y_d$; $W-N$; $rgb/cmy_0 \rightarrow rgb_d$ setrgbcolor



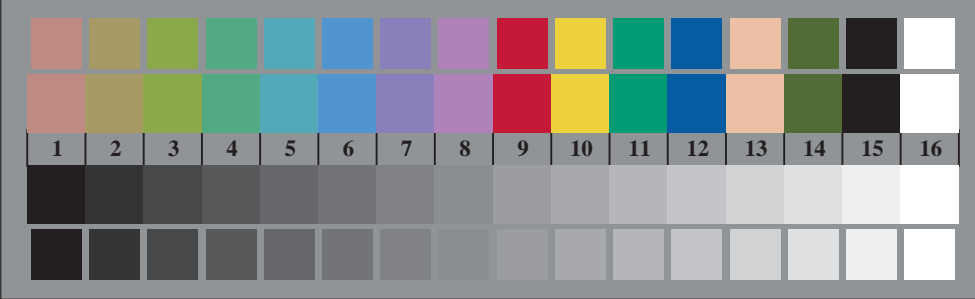
TE951-3, Picture B5Wd: Script and Landolt-rings N ; C_d ; M_d ; Y_d ; Z ; PS operator $rgb \rightarrow rgb_d$ setrgbcolor



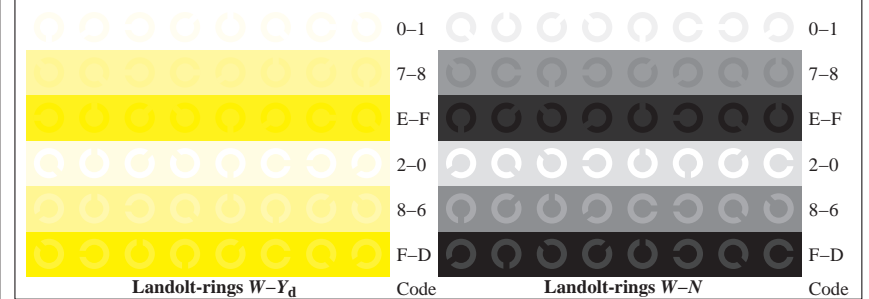
TE950-5, Picture B2Wd: radial gratings $W-C_d$; $W-M_d$; $W-Y_d$; $W-N$; PS operator $rgb \rightarrow rgb_d$ setrgbcolor



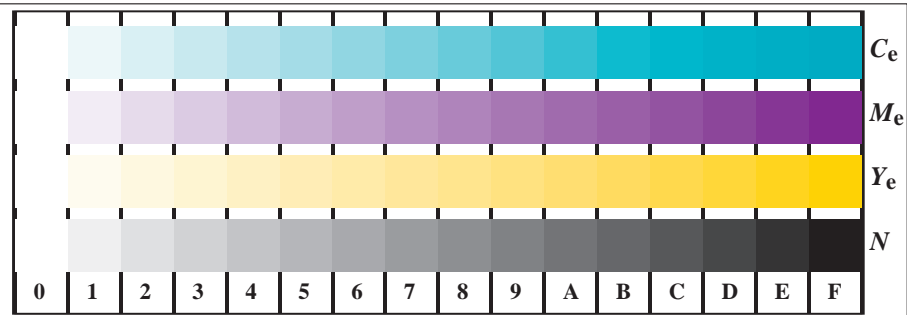
TE951-5, Picture B6Wd: Landolt-rings $W-C_d$; $W-M_d$; PS operator $rgb \rightarrow rgb_d$ setrgbcolor



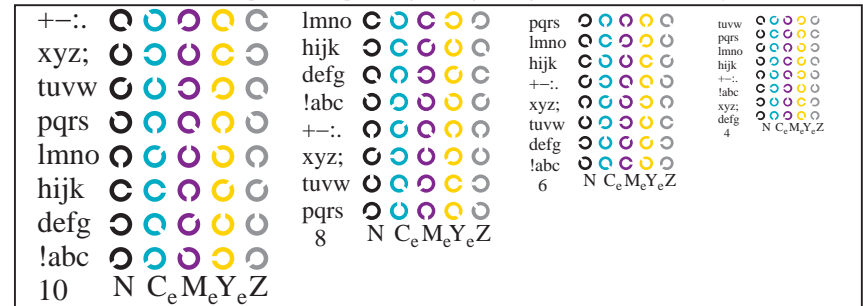
TE950-7, Picture B3Wd: 14 CIE-test colours and 2 + 16 grey steps (sf); $rgb/cmy_0 \rightarrow rgb_d$ setrgbcolor



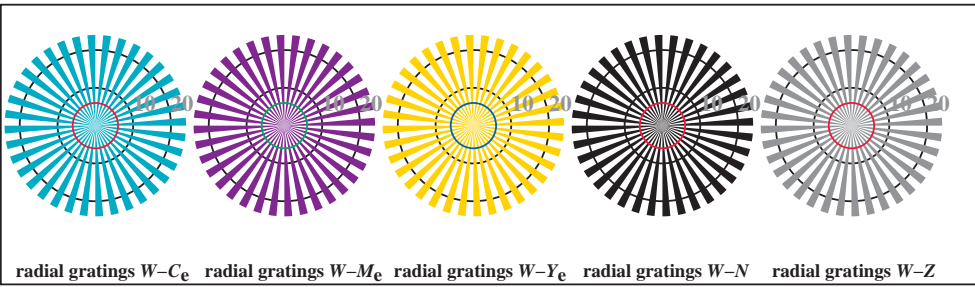
TE951-7, Picture B7Wd: Landolt-rings $W-Y_d$; $W-N$; PS operator $rgb \rightarrow rgb_d$ setrgbcolor



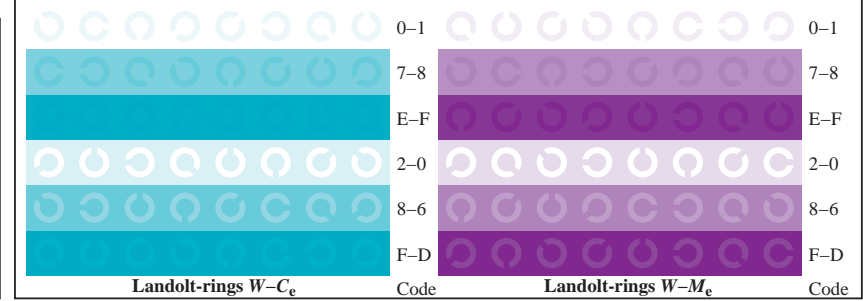
TE951-1, Picture B4We: 16 equidistant steps $W-C_e$; $W-M_e$; $W-Y_e$; $W-N$; $rgb/cmy0 \rightarrow rgb_e$ *setrgbcolor*



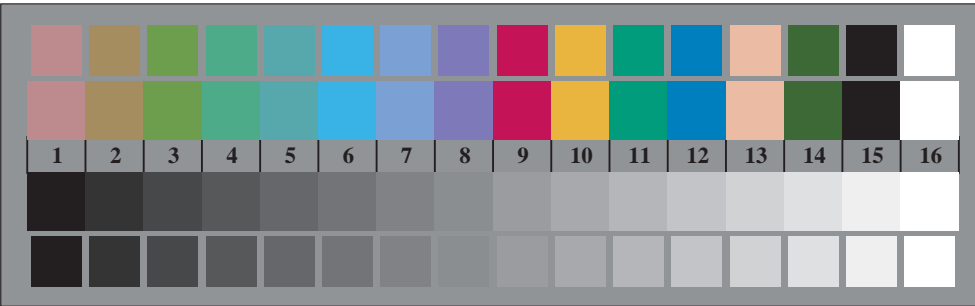
TE951-3, Picture B5We: Script and Landolt-rings N ; C_e ; M_e ; Y_e ; Z ; *PS operator rgb \rightarrow rgb_e setrgbcolor*



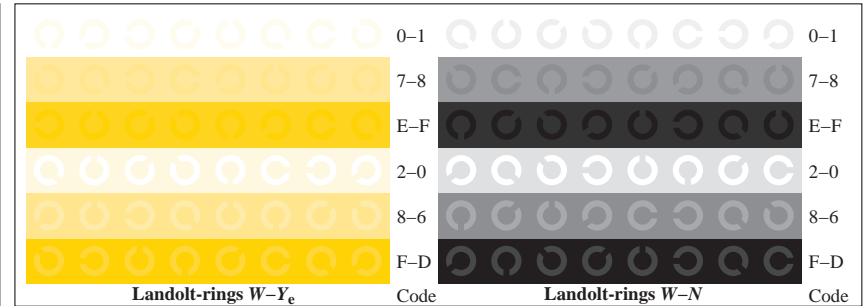
TE950-5, Picture B2We: radial gratings $W-C_e$; $W-M_e$; $W-Y_e$; $W-N$; *PS operator rgb \rightarrow rgb_e setrgbcolor*



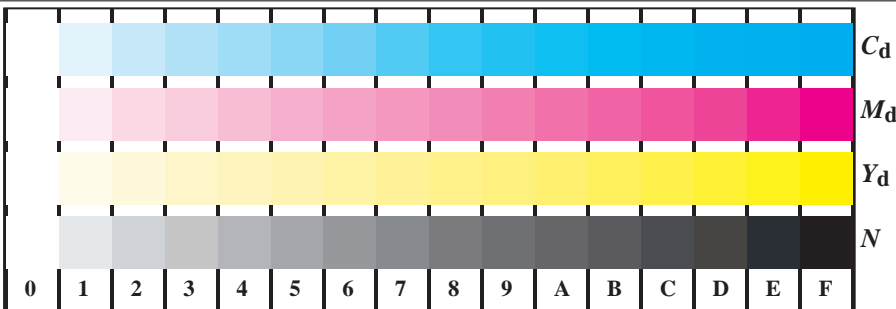
TE951-5, Picture B6We: Landolt-rings $W-C_e$; $W-M_e$; *PS operator rgb \rightarrow rgb_e setrgbcolor*



TE950-7, Picture B3We: 14 CIE-test colours and 2 + 16 grey steps (sf); $rgb/cmy0 \rightarrow rgb_e$ *setrgbcolor*



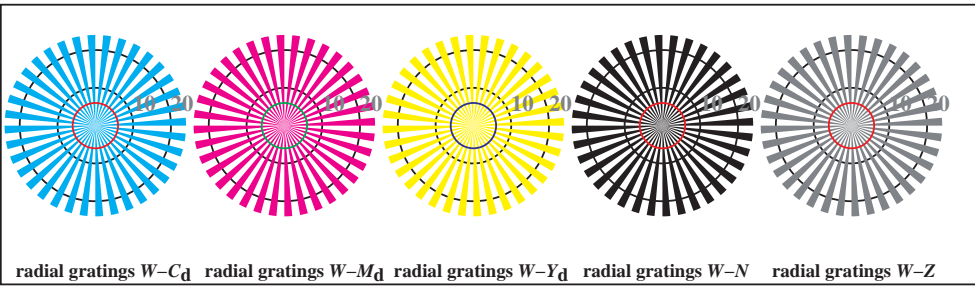
TE951-7, Picture B7We: Landolt-rings $W-Y_e$; $W-N$; *PS operator rgb \rightarrow rgb_e setrgbcolor*



TE951-1, Picture B4Wdd: 16 equidistant steps $W-C_d$; $W-M_d$; $W-Y_d$; $W-N$; $rgb/cmy0 \rightarrow rgb_{dd}$ *setrgbcolor*

+-.:	lmno	pqrs	tuvw	0-1	0-1
xyz;	hijk	lmno	pqrs	7-8	7-8
tuvw	defg	hijk	lmno	E-F	E-F
pqrs	!abc	+-.:	xyz;	2-0	2-0
lmno	+-.:	xyz;	tuvw	8-6	8-6
hijk	xyz;	defg	!abc	F-D	F-D
defg	tuvw	!abc	6		
!abc	8	N C _d M _d Y _d Z			
10	N C _d M _d Y _d Z				

TE951-3, Picture B5Wdd: Script and Landolt-rings N; C_d; M_d; Y_d; Z; PS operator $rgb \rightarrow rgb_{dd}$ *setrgbcolor*



TE950-5, Picture B2Wdd: radial gratings $W-C_d$; $W-M_d$; $W-Y_d$; $W-N$; PS operator $rgb \rightarrow rgb_{dd}$ *setrgbcolor*

Landolt-rings $W-C_d$	Code	Landolt-rings $W-M_d$	Code
0-1	0-1	0-1	0-1
7-8	7-8	7-8	7-8
E-F	E-F	E-F	E-F
2-0	2-0	2-0	2-0
8-6	8-6	8-6	8-6
F-D	F-D	F-D	F-D

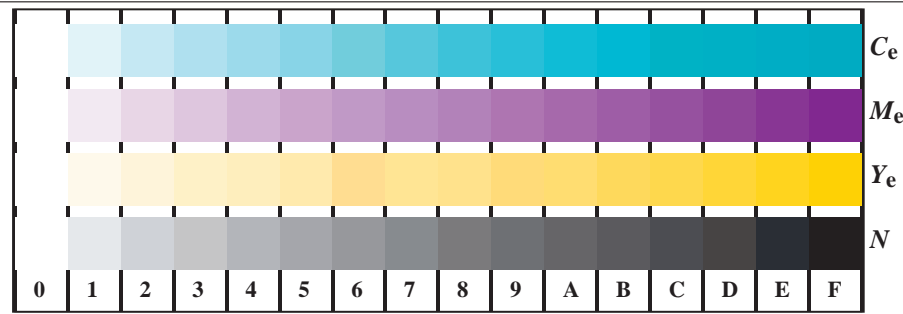
TE951-5, Picture B6Wdd: Landolt-rings $W-C_d$; $W-M_d$; PS operator $rgb \rightarrow rgb_{dd}$ *setrgbcolor*



TE950-7, Picture B3Wdd: 14 CIE-test colours and 2 + 16 grey steps (sf); $rgb/cmy0 \rightarrow rgb_{dd}$ *setrgbcolor*

Landolt-rings $W-Y_d$	Code	Landolt-rings $W-N$	Code
0-1	0-1	0-1	0-1
7-8	7-8	7-8	7-8
E-F	E-F	E-F	E-F
2-0	2-0	2-0	2-0
8-6	8-6	8-6	8-6
F-D	F-D	F-D	F-D

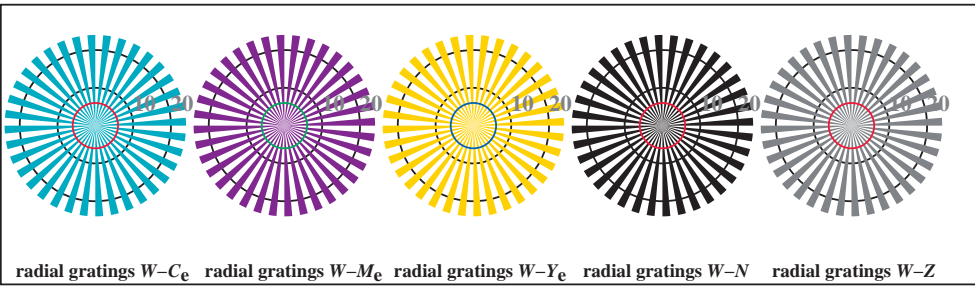
TE951-7, Picture B7Wdd: Landolt-rings $W-Y_d$; $W-N$; PS operator $rgb \rightarrow rgb_{dd}$ *setrgbcolor*



TE951-1, Picture B4Wde: 16 equidistant steps $W-C_e$; $W-M_e$; $W-Y_e$; $W-N$; $rgb/cmy0 \rightarrow rgb_{de}$ *setrgbcolor*

Script and Landolt-rings for color calibration. The chart displays various characters and Landolt-rings in different colors (cyan, magenta, yellow, black) against a white background. The characters include: +-.:., xyz;, tuvw, pqrs, lmno, hijk, defg, !abc, +-.:., xyz;, tuvw, defg, !abc, 10, N $C_e M_e Y_e Z$. The Landolt-rings are arranged in a grid, with some rings being solid and others being hollow. The characters are arranged in a grid, with some characters being bold and others being regular. The Landolt-rings are arranged in a grid, with some rings being solid and others being hollow. The characters are arranged in a grid, with some characters being bold and others being regular.

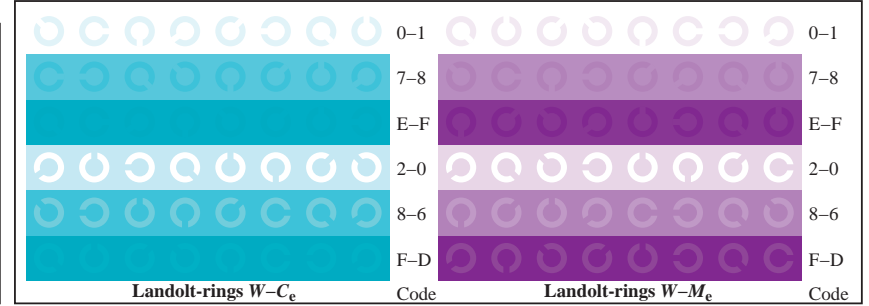
TE951-3, Picture B5Wde: Script and Landolt-rings N ; C_e ; M_e ; Y_e ; Z ; *PS operator rgb \rightarrow rgb_{de}* *setrgbcolor*



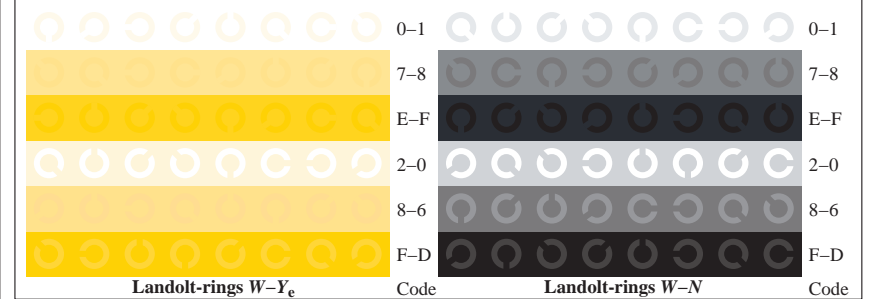
TE950-5, Picture B2Wde: radial gratings $W-C_e$; $W-M_e$; $W-Y_e$; $W-N$; *PS operator rgb \rightarrow rgb_{de}* *setrgbcolor*



TE950-7, Picture B3Wde: 14 CIE-test colours and 2 + 16 grey steps (sf); $rgb/cmy0 \rightarrow rgb_{de}$ *setrgbcolor*



TE951-5, Picture B6Wde: Landolt-rings $W-C_e$; $W-M_e$; *PS operator rgb \rightarrow rgb_{de}* *setrgbcolor*



TE951-7, Picture B7Wde: Landolt-rings $W-Y_e$; $W-N$; *PS operator rgb \rightarrow rgb_{de}* *setrgbcolor*