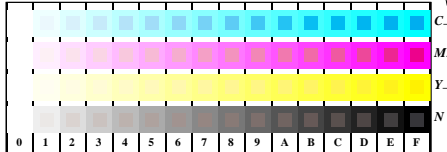


see similar files: http://130.149.60.45/~farbmatrik/TE95/TE95.HTM
technical information: http://www.ps.bam.de or http://130.149.60.45/~farbmatrik

TUB registration: 20150701-TE95/TE95L0N1.TXT /PS
application for measurement of offset print output

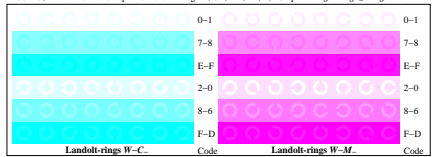
TUB material: code=thata



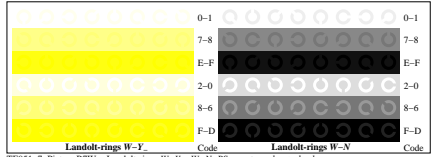
TE951-1, Picture B4W--: 16 equidistant steps W-C.; W-M.; W-Y.; W-N; rgb/cmy0 set/rgb/cmykcolor



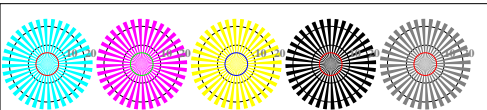
TE951-3, Picture B5W--: Script and Landolt-rings N, C.; M.; Y.; Z; PS operator rgb->rgb_setrgbcolor



TE951-5, Picture B6W--: Landolt-rings W-C.; W-M.; PS operator rgb setrgbcolor

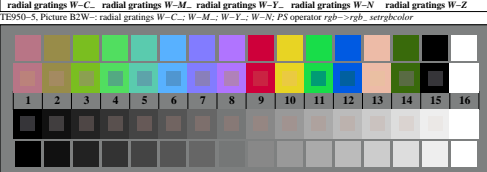


TE951-7, Picture B7W--: Landolt-rings W-Y.; W-N; PS operator rgb setrgbcolor



radial gratings W-C. radial gratings W-M. radial gratings W-Y. radial gratings W-N radial gratings W-Z

TE950-5, Picture B2W--: radial gratings W-C.; W-M.; W-Y.; W-N; PS operator rgb->rgb_setrgbcolor



TE950-7, Picture B3W--: 14 CIE-test colours and 2 + 16 grey steps (sf); rgb/cmy0 set/rgb/cmykcolor

test chart TE95; 2(ISO/IEC 15775 + ISO/IEC TR 24705)
chromatic test chart CMY

input: rgb/cmyk -> w/rgb/cmyk-
output: no change

