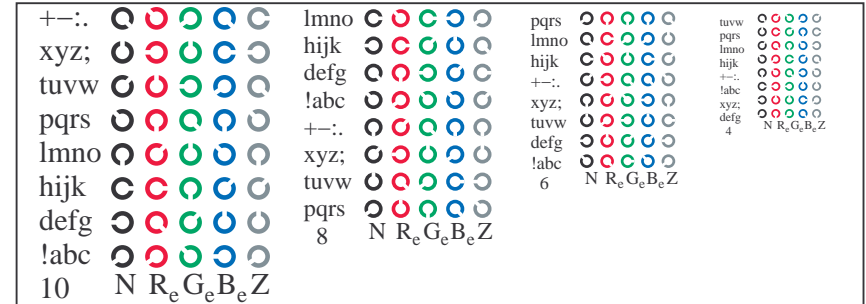
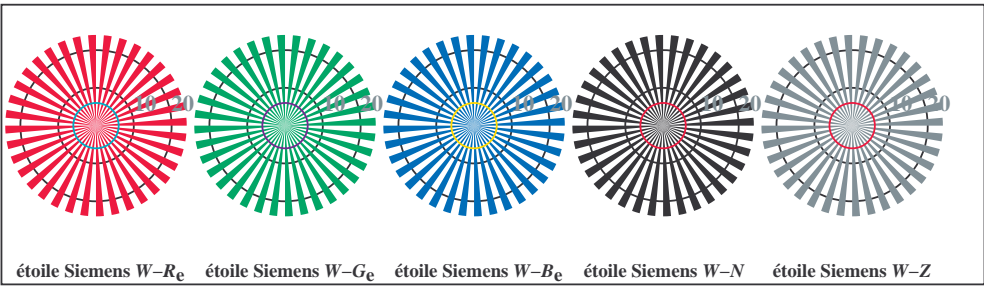


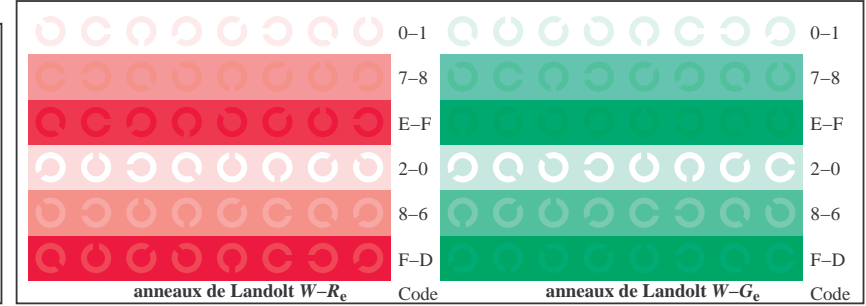
TF881-1, Fig. D4Wde: 16 paliers équadistants $W-R_e$; $W-G_e$; $W-B_e$; $W-N$; $rgb/cmy0 \rightarrow rgb_{de}$ *setrgbcolor*



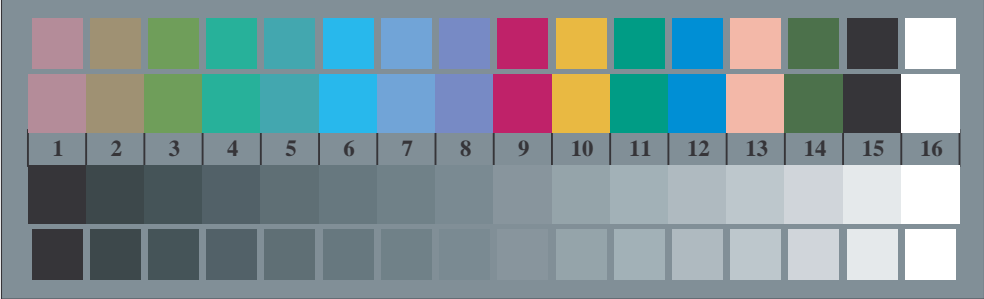
TF881-3, Fig. D5Wde: code et anneau de Landolt N ; R_e ; G_e ; B_e ; Z ; *PS* opérateur: $rgb \rightarrow rgb_{de}$ *setrgbcolor*



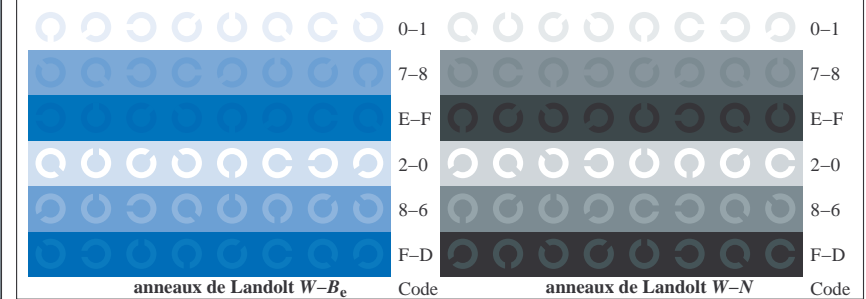
TF880-5, Fig. D2Wde: étoile de Siemens $W-R_e$; $W-G_e$; $W-B_e$; $W-N$; *PS* opérateur: $rgb \rightarrow rgb_{de}$ *setrgbcolor*



TF881-5, Fig. D6Wde: anneaux de Landolt $W-R_e$; $W-G_e$; *PS* opérateur: $rgb \rightarrow rgb_{de}$ *setrgbcolor*



TF880-7, Fig. D3Wde: 14 CIE test couleurs et 2 + 16 paliers de gris (sf); *PS* opérateur: $rgb/cmy0 \rightarrow rgb_{de}$ *setrgbcolor*



TF881-7, Fig. D7Wde: anneaux de Landolt $W-B_e$; $W-N$; *PS* opérateur: $rgb \rightarrow rgb_{de}$ *setrgbcolor*