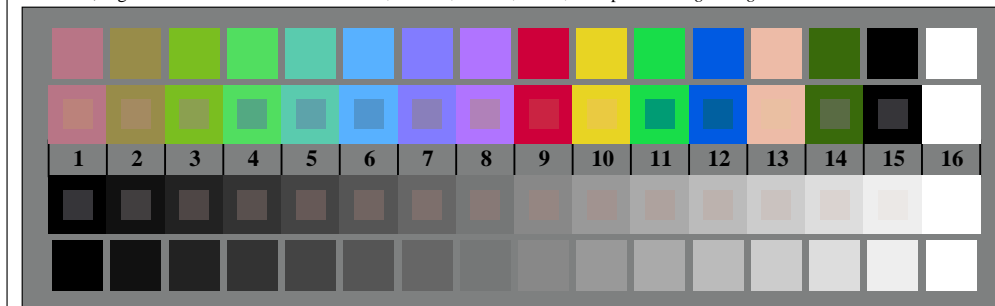
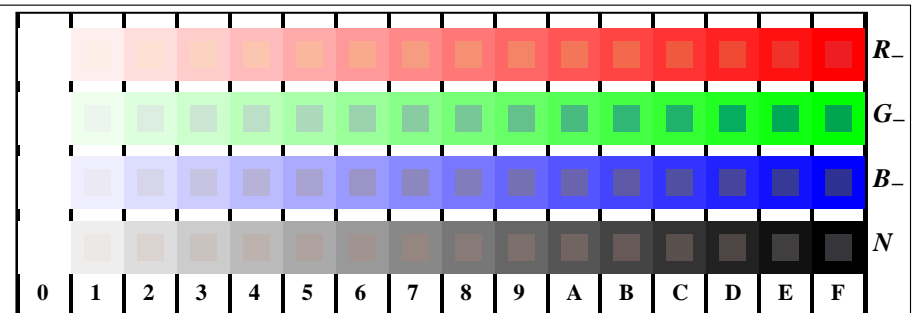


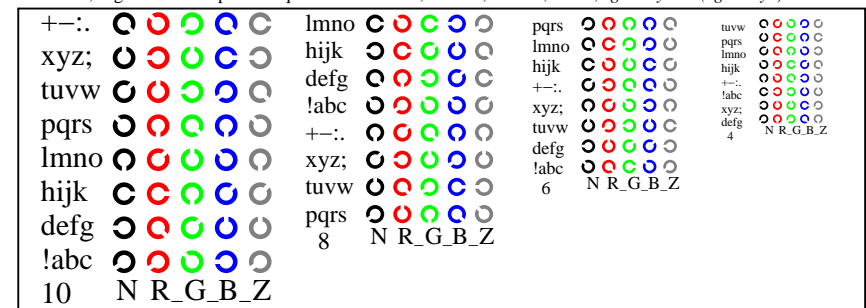
TF880-5, Fig. D2W-: étoile de Siemens W-R_; W-G_; W-B_; W-N; PS opérateur : rgb setrgbcolor



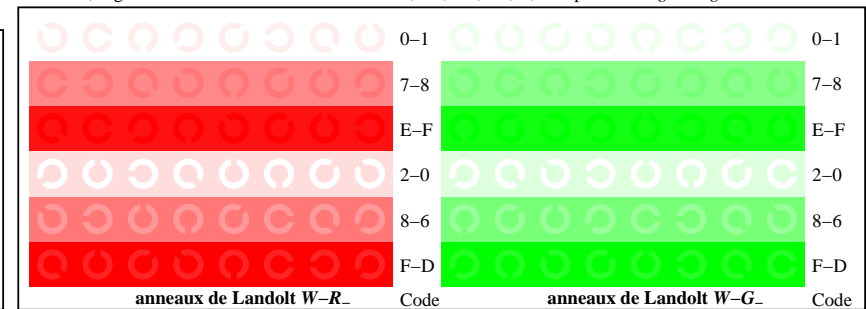
TF880-7, Fig. D3W-: 14 CIE test couleurs et 2 + 16 paliers de gris (sf); PS opérateur: rgb/cmy0 set(rgb/cmyk)color



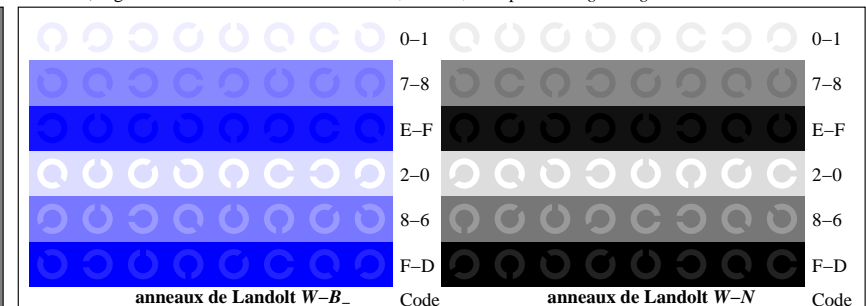
TF881-1, Fig. D4W-: 16 paliers équidistants W-R_; W-G_; W-B_; W-N; rgb/cmy0 set(rgb/cmyk)color



TF881-3, Fig. D5W-: code et anneau de Landolt N; R_; G_; B_; Z; PS opérateur: rgb setrgbcolor



TF881-5, Fig. D6W-: anneaux de Landolt W-R_; W-G_; PS opérateur: rgb setrgbcolor



TF881-7, Fig. D7W-: anneaux de Landolt W-B_; W-N; PS opérateur: rgb setrgbcolor