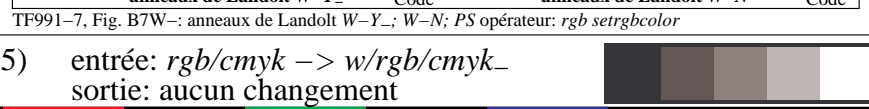
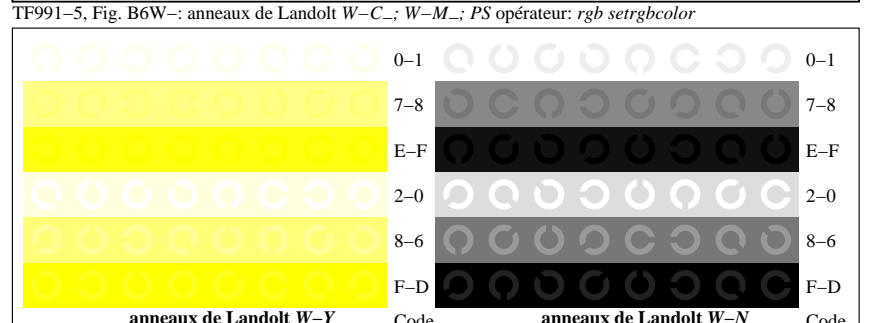
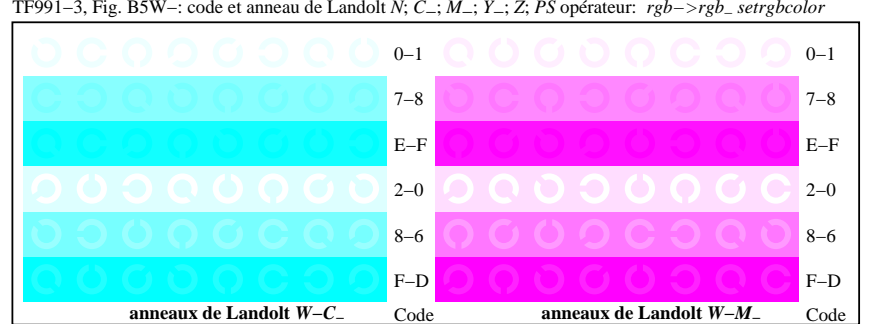
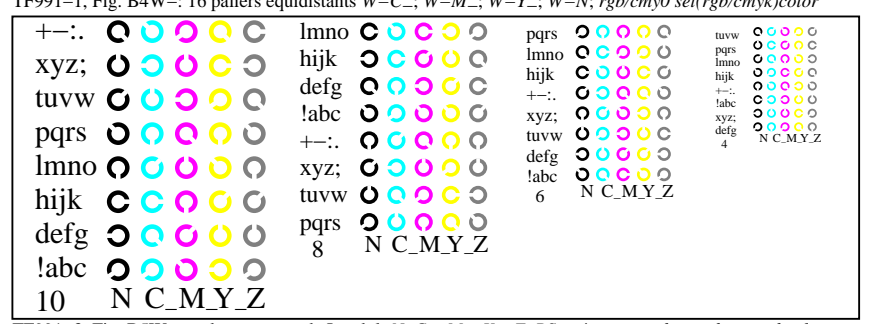
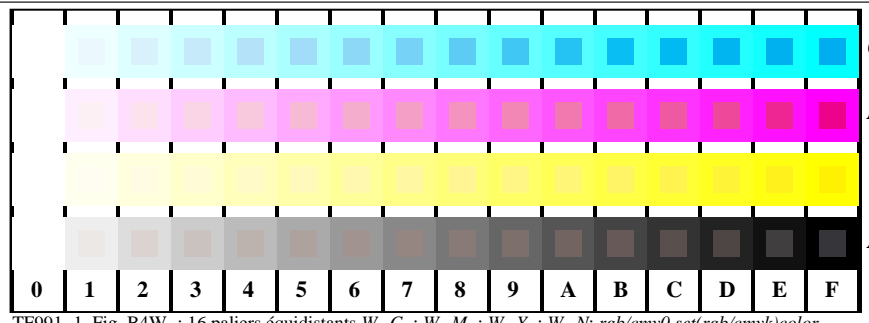
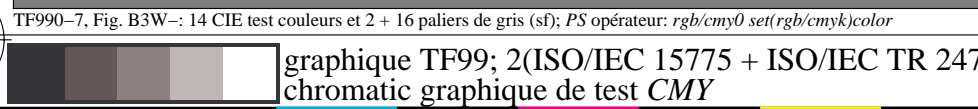
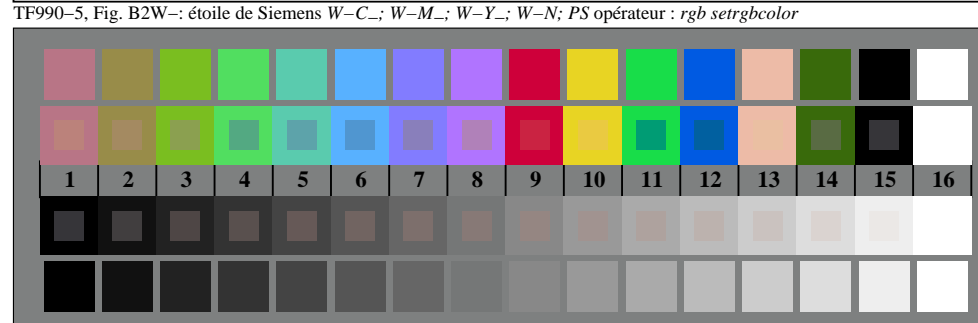
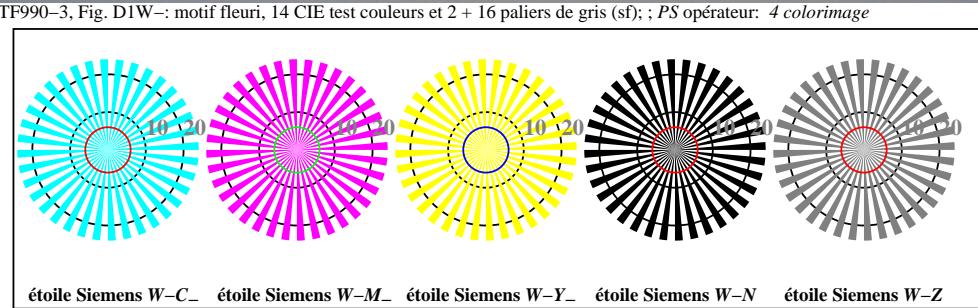


voir des fichiers similaires: <http://130.149.60.45/~farbmetrik/TF99/TF99.HTM>
informations techniques: <http://www.ps.bam.de> ou <http://130.149.60.45/~farbmetrik>



TUB enregistrement: 20150701 - TF99/TF99L0NP.PDF /.PS
application pour la mesure des sorties sur imprimante laser

TUB matériel: code=rh4ta