

Siehe ähnliche Dateien: <http://30.149.60.45/~farbmetrik/TG40/TG40L0N1.TXT>
 Technische Information: <http://www.ps.bam.de> oder <http://30.149.60.45/~farbmetrik>

Grund- und Mischfarben des sRGB-Farbraums für D65, Y_w=100

Code	X ₁₀₀	Y ₁₀₀	Z ₁₀₀	x	y	z	h _{xy}	l _d	l _c	l _e
R _L D65_sRGB	41.24	21.26	1.93	0.64	0.33	0.03	0.1	41 606	17 486	6 486
Y _L D65_sRGB	76.99	92.78	13.85	0.4193	0.5052	0.0754	58.8	33 565	11 459	4 589
G _L D65_sRGB	35.75	71.51	11.91	0.3	0.6	0.0999	92.6	28 544	-1 544c	-1 544c
C _L D65_sRGB	53.8	78.73	106.95	0.2246	0.3287	0.4465	180.1	17 486	41 606	6 486
B _L D65_sRGB	18.04	7.21	95.03	0.1499	0.0599	0.7899	238.8	11 459	33 565	6 486
M _L D65_sRGB	59.28	28.48	96.97	0.3209	0.1541	0.5249	272.7	-1 544c	28 544	4 589
N _L D65_sRGB	0.95	1.0	1.08	0.3127	0.329	0.3582	359.9	-1 544c	-1 459c	-1 459c
W _L D65_sRGB	95.04	100.0	108.89	0.3127	0.329	0.3582	359.9	-1 544c	-1 459c	-1 459c

Grund- und Mischfarben des sRGB-Farbraums für D65, Y_w=100

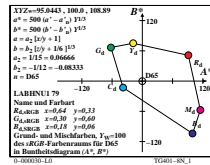
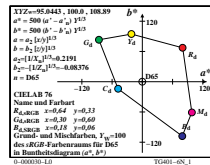
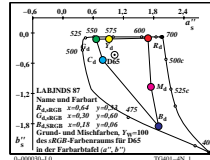
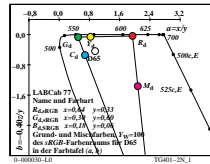
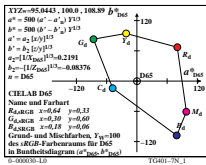
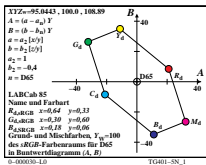
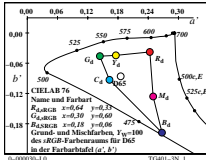
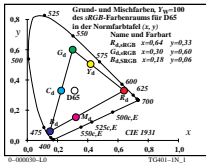
Code	Y ₁₀₀	A ₁₀₀	B ₁₀₀	C _{AB}	a	b	h _{AB}	l _d	l _c	l _e
R _L D65_sRGB	21.26	21.02	8.48	22.67	1.9393	-0.0363	21.9	41 606	17 486	6 486
Y _L D65_sRGB	92.78	-11.18	34.87	36.62	0.8298	-0.0597	107.7	33 565	13 467	4 589
G _L D65_sRGB	71.51	-32.21	26.38	41.63	0.4999	-0.0666	140.6	29 545	-1 545c	-1 545c
C _L D65_sRGB	78.73	-21.02	-8.48	22.67	0.6833	-0.5433	201.9	17 486	43 618	6 486
B _L D65_sRGB	7.21	11.18	-34.87	36.62	2.4999	-5.2665	287.7	11 458	32 562	6 486
M _L D65_sRGB	28.48	32.21	-26.38	41.63	2.0814	-1.3618	320.6	-1 533c	26 533	6 486
N _L D65_sRGB	1.0	0.0	0.0	0.01	0.9503	-0.4355	82.0	38 591	16 483	4 833
W _L D65_sRGB	100.0	0.0	0.0	0.0	0.9504	-0.4355	355.6	38 591	16 484	4 833

Grund- und Mischfarben des sRGB-Farbraums für D65, Y_w=100

Code	L* ₁₀₀	a* ₁₀₀	b* ₁₀₀	C* _{ab}	a'	b'	h _{ab}	l _d	l _c	l _e
R _L D65_sRGB	53.24	80.07	67.12	104.48	0.2732	-0.0376	39.9	-1 479c	15 479	4 479
Y _L D65_sRGB	97.14	-21.55	94.46	96.88	0.2058	-0.0444	102.8	32 562	14 470	4 470
G _L D65_sRGB	87.74	-86.16	83.16	119.75	0.1738	-0.046	136.0	27 536	9 449	4 449
C _L D65_sRGB	91.11	-48.07	-14.12	50.11	0.1929	-0.0927	196.3	16 484	-1 484c	-1 484c
B _L D65_sRGB	32.32	79.14	-107.82	133.75	0.2971	-0.1976	306.2	12 461	28 544	4 449
M _L D65_sRGB	60.33	98.22	-60.82	115.52	0.2796	-0.1259	328.2	-1 524c	24 524	4 449
N _L D65_sRGB	9.07	0.0	0.0	0.0	0.2153	-0.0861	0.0	-1 524c	-1 461c	-1 461c
W _L D65_sRGB	100.0	0.0	0.0	0.0	0.2153	-0.0861	0.0	-1 524c	-1 461c	-1 461c

Grund- und Mischfarben des sRGB-Farbraums für D65, Y_w=100

Code	L* ₁₀₀	a* ₁₀₀	b* ₁₀₀	C* _{ab}	a'	b'	h _{ab}	l _d	l _c	l _e
R _L D65_sRGB	53.24	80.09	67.2	104.55	0.2732	-0.0376	39.9	-1 479c	15 479	4 479
Y _L D65_sRGB	97.14	-21.55	94.48	96.9	0.2059	-0.0444	102.8	32 562	14 470	4 470
G _L D65_sRGB	87.74	-86.18	83.18	119.77	0.1739	-0.046	136.0	27 536	9 449	4 449
C _L D65_sRGB	91.11	-48.08	-14.12	50.11	0.1929	-0.0927	196.3	16 484	-1 484c	-1 484c
B _L D65_sRGB	32.32	79.19	-107.85	133.8	0.2972	-0.1976	306.2	12 461	28 544	4 449
M _L D65_sRGB	60.33	98.23	-60.82	115.54	0.2797	-0.1259	328.2	-1 524c	24 524	4 449
N _L D65_sRGB	9.07	0.0	0.0	0.0	0.2154	-0.0861	158.2	23 515	-1 515c	-1 515c
W _L D65_sRGB	100.0	0.0	0.0	0.0	0.2154	-0.0861	0.0	-1 524c	-1 515c	-1 515c



TUB-Registrierung: 20130201-TG40/TG40L0N1.TXT /PS
 Anwendung für Messung von Display-Ausgabe

TUB-Material: Code=thdtda