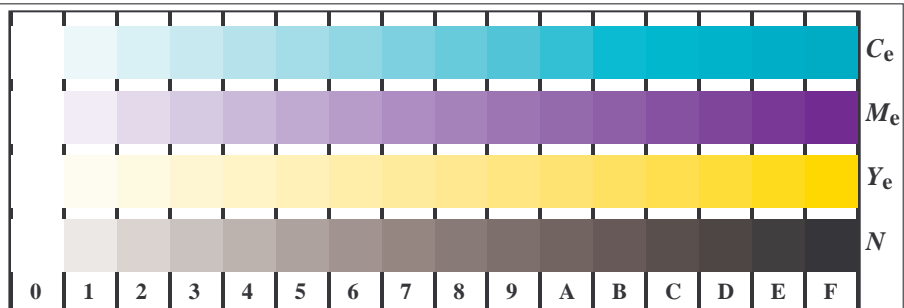




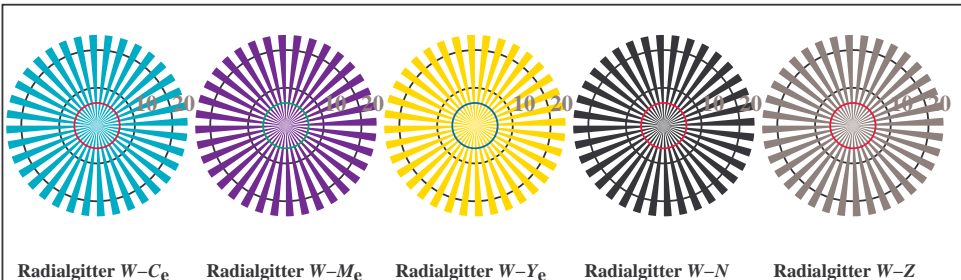
TG960-3, Bild B1We: Blumenmotiv, 14 CIE-Prüffarben und 2 + 16 Graustufen (mf); ; PS-Operatoren 4 colorimage



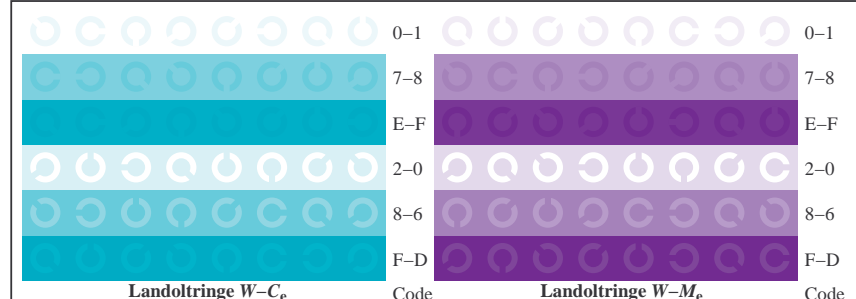
TG961-1, Bild B4We: 16 gleichabständige Stufen $W-C_e$; $W-M_e$; $W-Y_e$; $W-N$; $rgb/cmy0 \rightarrow rgb_e$ setrgbcolor

+-:.		lmno		pqrs		tuvw	
xyz;		hijk		lmno		pqrs	
tuvw		defg		hijk		+-:.	
pqrs		!abc		xyz;		lmno	
lmno		+-:.		tuvw		defg	
hijk		xyz;		!abc		8	
defg		tuvw		8		N	
!abc		8		N		C_e	
10		N		C_e		M_e	
						Y_e	
						Z	

TG961-3, Bild B5We: Schrift und Landoltringe N ; C_e ; M_e ; Y_e ; Z ; PS-Operator: $rgb \rightarrow rgb_e$ setrgbcolor



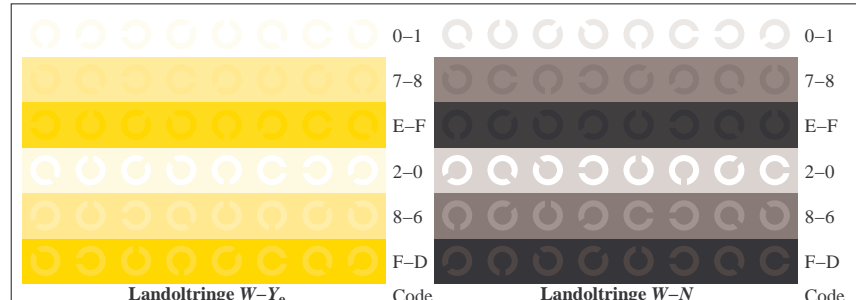
TG960-5, Bild B2We: Radialgitter $W-C_e$; $W-M_e$; $W-Y_e$; $W-N$; PS-Operator: $rgb \rightarrow rgb_e$ setrgbcolor



TG961-5, Bild B6We: Landoltringe $W-C_e$; $W-M_e$; PS-Operator: $rgb \rightarrow rgb_e$ setrgbcolor



TG960-7, Bild B3We: 14 CIE-Prüffarben sowie 2 + 16 Graustufen (sf); PS-Operator: $rgb/cmy0 \rightarrow rgb_e$ setrgbcolor



TG961-7, Bild B7We: Landoltringe $W-Y_e$; $W-N$; PS-Operator: $rgb \rightarrow rgb_e$ setrgbcolor