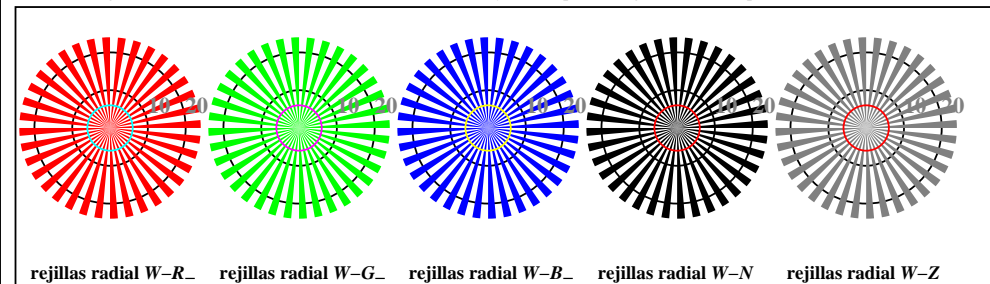
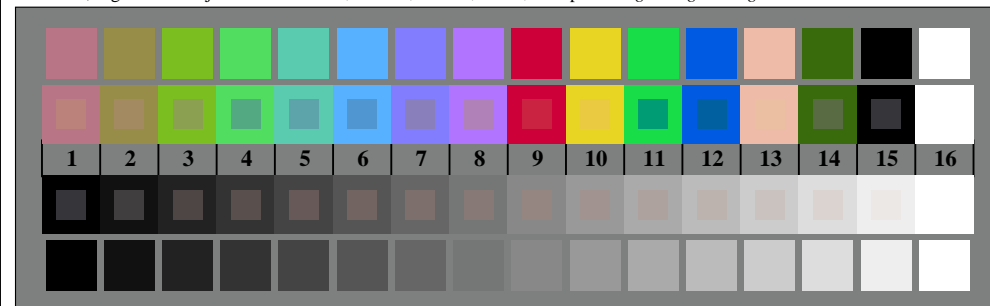




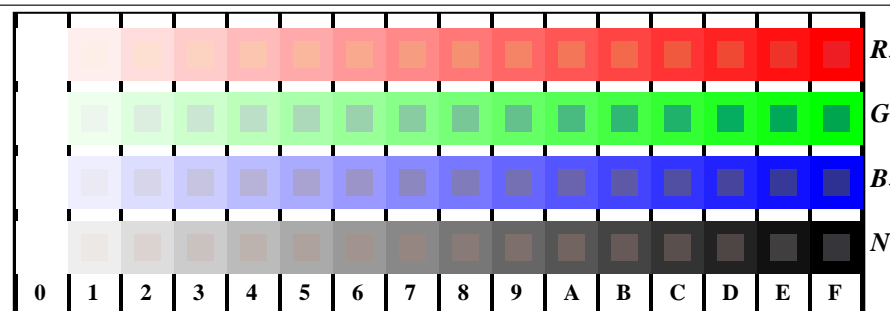
TS800-3, Fig. D1W-: motivos florales, CIE 14 colores del test y 2 + 16 pasos de gris (sf); ; PS operator 3 colorimage



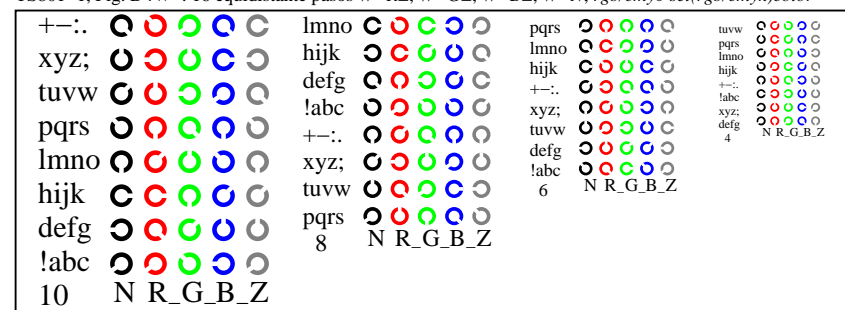
TS800-5, Fig. D2W-: rejillas radial W-R_; W-G_; W-B_; W-N; PS operator rgb->rgb_setrgbcolor



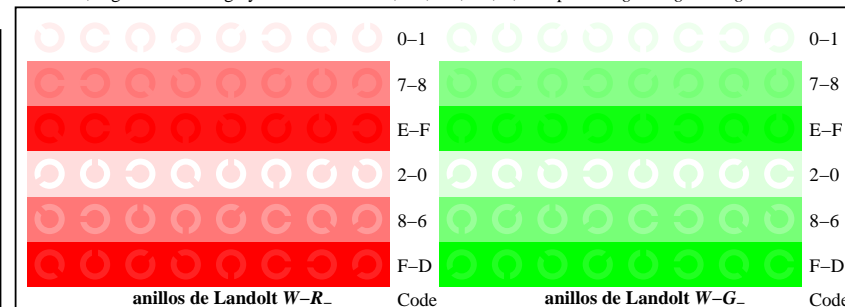
TS800-7, Fig. D3W-: CIE 14 colores del test y 2 + 16 pasos de gris (sf); rgb/cmy0 set(rgb/cmyk)color



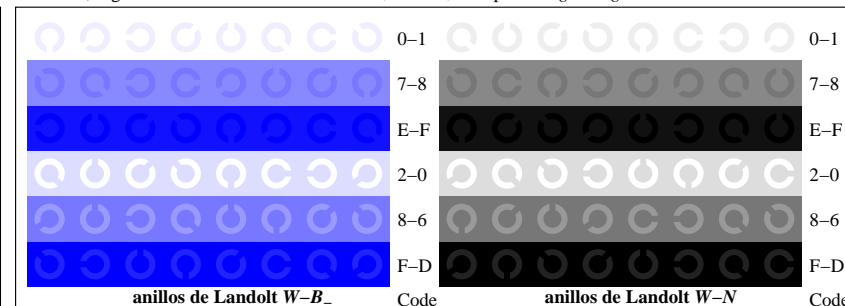
TS801-1, Fig. D4W-: 16 equidistante pasos W-R_; W-G_; W-B_; W-N; rgb/cmy0 set(rgb/cmyk)color



TS801-3, Fig. D5W-: codigo y Landolt anillosN; R_; G_; B_; Z; PS operator rgb->rgb_setrgbcolor



TS801-5, Fig. D6W-: anillos de Landolt W-R_; W-G_; PS operator rgb_setrgbcolor



TS801-7, Fig. D7W-: anillos de Landolt W-B_; W-N; PS operator rgb_setrgbcolor