

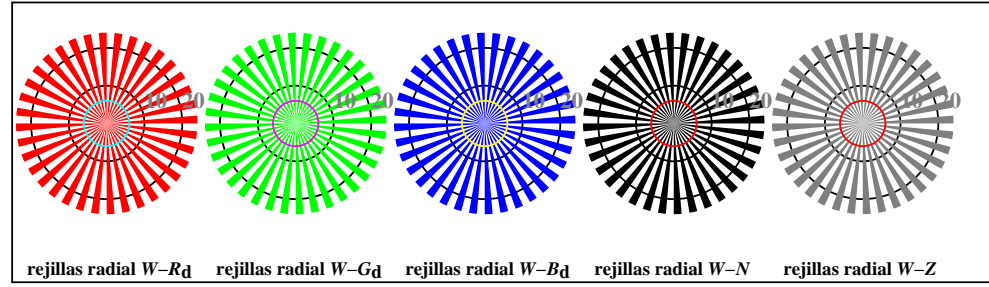
vea archivos semejantes: <http://130.149.60.45/~farbmetrik/TS80/TS80.HTM>
Información técnica: <http://www.ps.bam.de> o <http://130.149.60.45/~farbmetrik>

TUB matrícula: 20150701-TS80/TS80LOFP.PDF /PS
aplicación para la medida de display output, ninguna separación

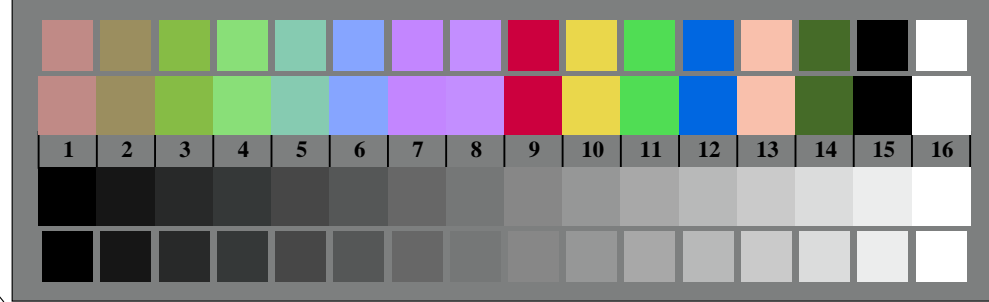
TUB material: code=thad4ta



TS800-3, Fig. D1Wdd: motivos florales, CIE 14 colores del test y 2 + 16 pasos de gris (sf); ; PS operator 3 colorimage



TS800-5, Fig. D2Wdd: rejillas radial W-Rd; W-Gd; W-Bd; W-N; PS operator rgb->rgbdd setrgbcolor



TS800-7, Fig. D3Wdd: CIE 14 colores del test y 2 + 16 pasos de gris (sf); rgb/cmy0->rgbdd setrgbcolor

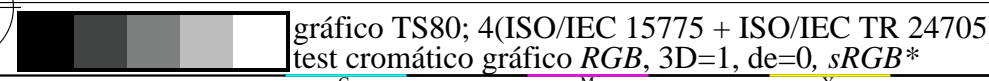
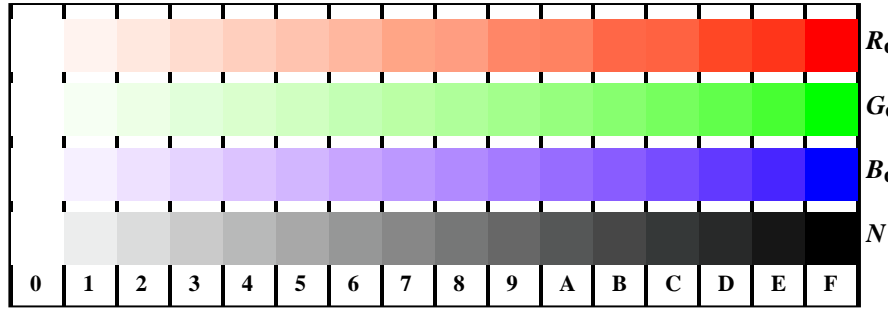
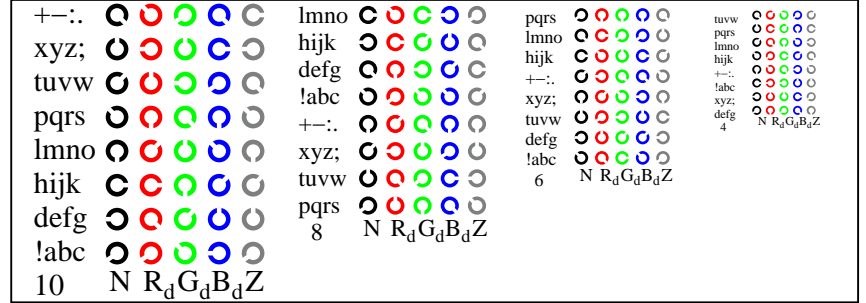


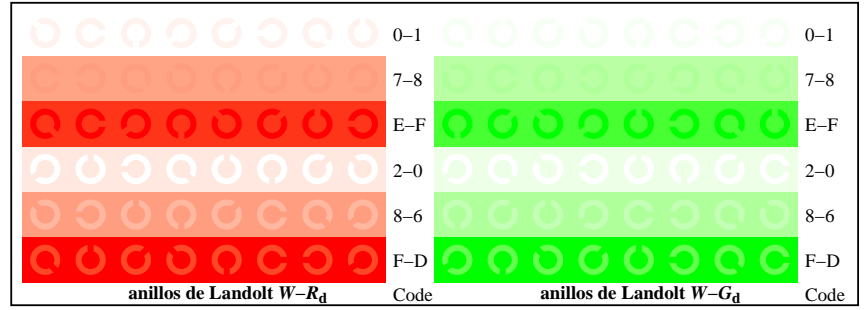
gráfico TS80; 4(ISO/IEC 15775 + ISO/IEC TR 24705)
test cromático gráfico RGB, 3D=1, de=0, sRGB*



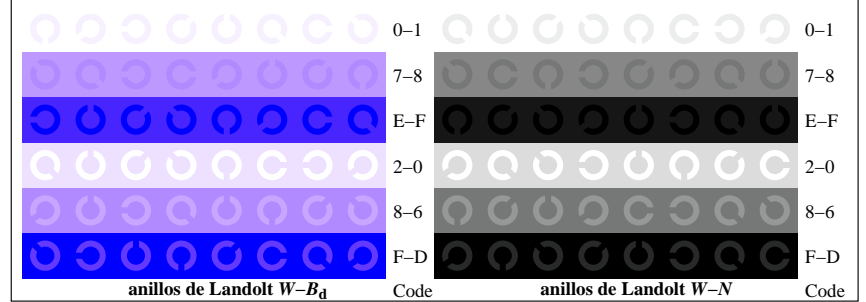
TS801-1, Fig. D4Wdd: 16 equidistante pasos W-Rd; W-Gd; W-Bd; W-N; rgb/cmy0->rgbdd setrgbcolor



TS801-3, Fig. D5Wdd: codigo y Landolt anillosN; Rd; Gd; Bd; Z; PS operator rgb->rgbdd setrgbcolor



TS801-5, Fig. D6Wdd: anillos de Landolt W-Rd; W-Gd; PS operator rgb->rgbdd setrgbcolor



TS801-7, Fig. D7Wdd: anillos de Landolt W-Bd; W-N; PS operator rgb->rgbdd setrgbcolor

entrada: rgb/cmyk -> rgbdd
salida: 3D-linealización a rgb*dd