

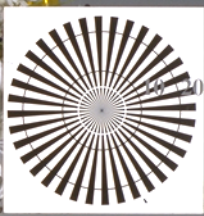
vea archivos semejantes: <http://130.149.60.45/~farbmetrik/TS80/TS80.HTM>
Información técnica: <http://www.ps.bam.de> o <http://130.149.60.45/~farbmetrik>

TUB matrícula: 20150701-TS80/TS80LOFP.PDF /.PS
aplicación para la medida de display output, ninguna separación

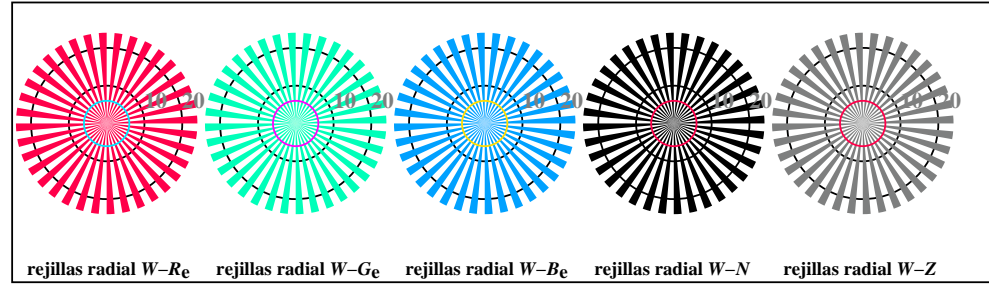
TUB material: code=thad4ta



192 x 128
384 x 256
768 x 512
1536 x 1024
3072 x 2048

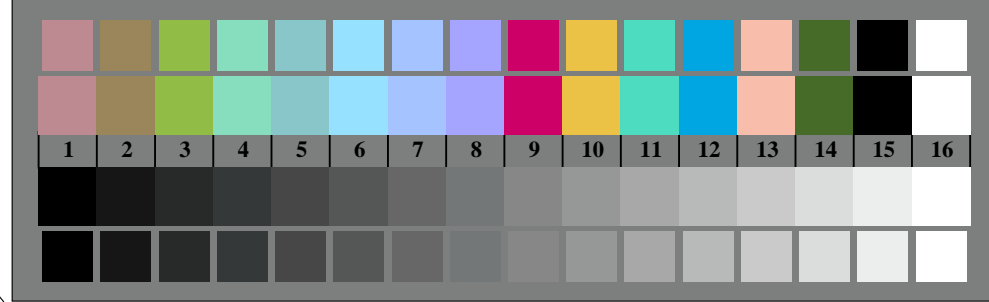


TS800-3, Fig. D1Wde: motivos florales, CIE 14 colores del test y 2 + 16 pasos de gris (sf); PS operator 3 colorimage

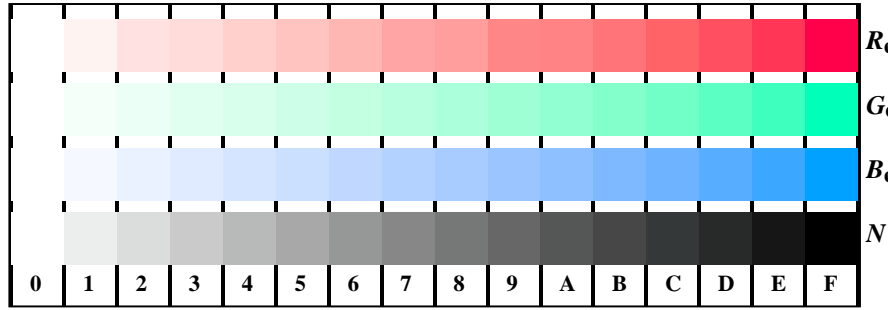


rejillas radial W-Re rejillas radial W-Ge rejillas radial W-Be rejillas radial W-N rejillas radial W-Z

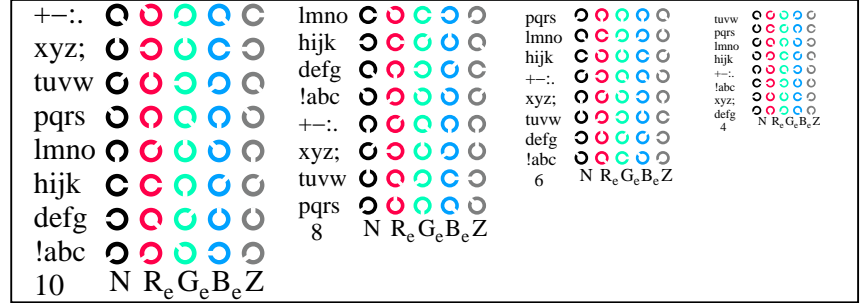
TS800-5, Fig. D2Wde: rejillas radial W-Re; W-Ge; W-Be; W-N; PS operator rgb->rgbde setrgbcolor



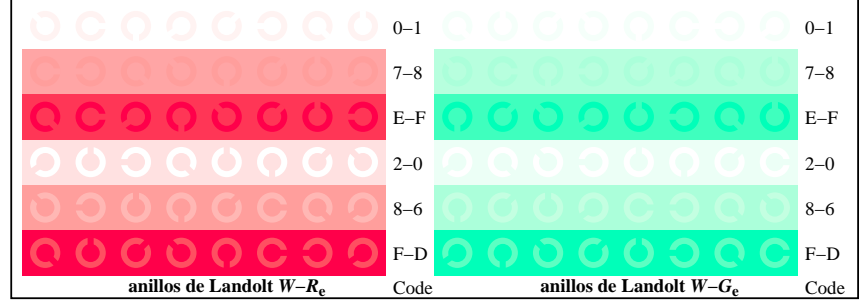
TS800-7, Fig. D3Wde: CIE 14 colores del test y 2 + 16 pasos de gris (sf); rgb/cmy0->rgbde setrgbcolor



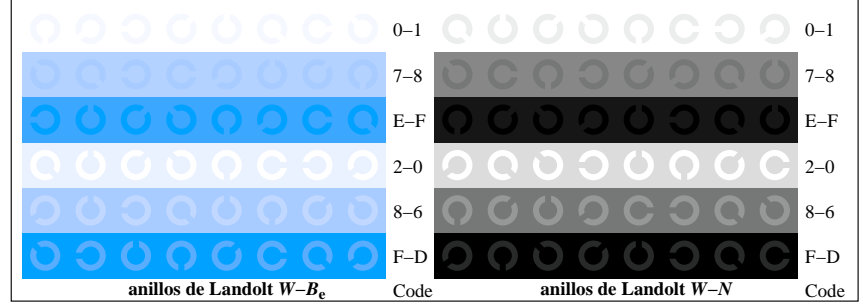
TS801-1, Fig. D4Wde: 16 equidistante pasos W-Re; W-Ge; W-Be; W-N; rgb/cmy0->rgbde setrgbcolor



TS801-3, Fig. D5Wde: codigo y Landolt anillos N; Re; Ge; Be; Z; PS operator rgb->rgbde setrgbcolor



TS801-5, Fig. D6Wde: anillos de Landolt W-Re; W-Ge; PS operator rgb->rgbde setrgbcolor



TS801-7, Fig. D7Wde: anillos de Landolt W-Be; W-N; PS operator rgb->rgbde setrgbcolor

gráfico TS80; 4(ISO/IEC 15775 + ISO/IEC TR 24705)
test cromático gráfico RGB, 3D=1, de=1, sRGB*

entrada: rgb/cmyk -> rgbde
salida: 3D-linealización a rgb*de

