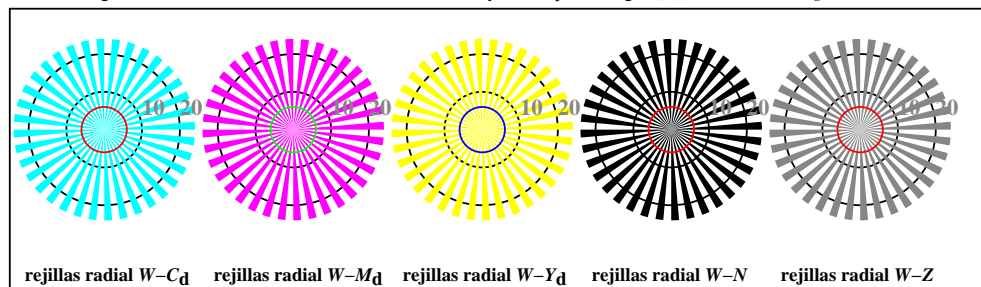
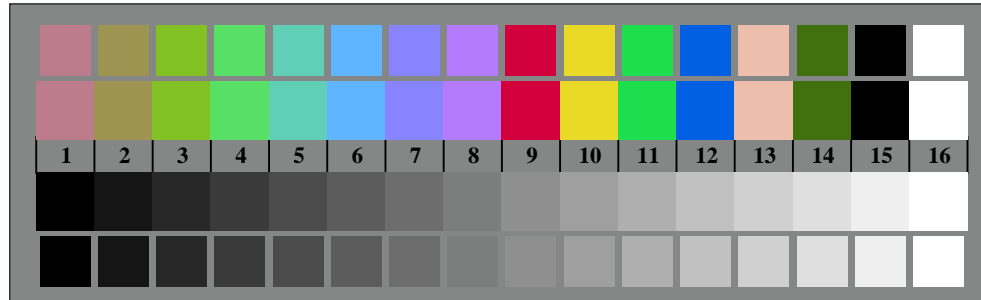




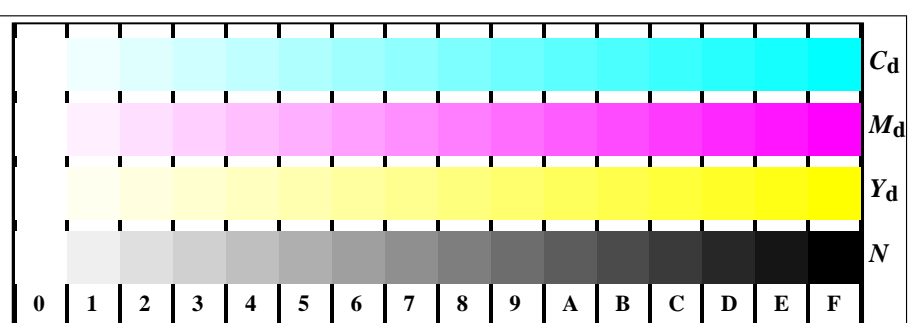
TS900-3, Fig. B1Wd: motivos florales, CIE 14 colores del test y 2 + 16 pasos de gris (nf); PS 3 colorimage



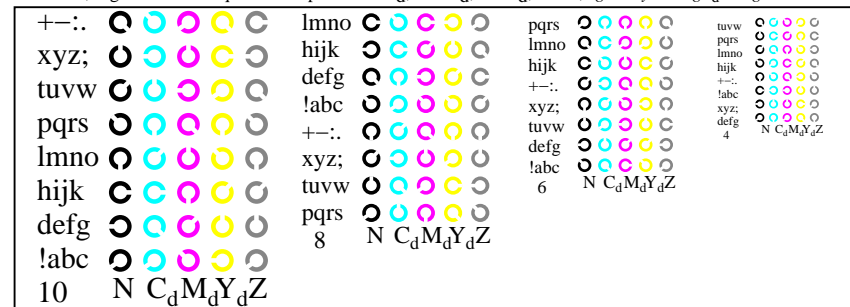
TS900-5, Fig. B2Wd: rejillas radial $W-C_d$; $W-M_d$; $W-Y_d$; $W-N$; PS operator $rgb \rightarrow rgb_d$ setrgbcolor



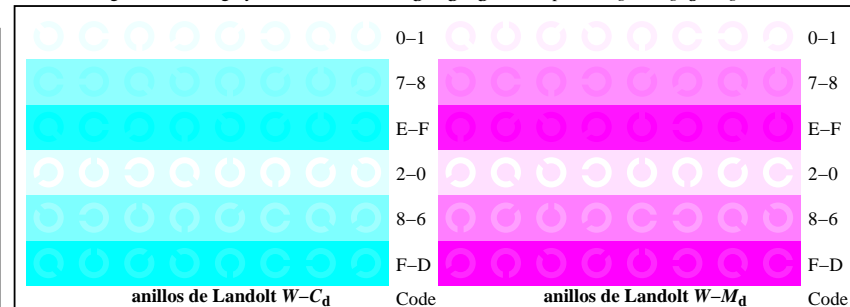
TS900-7, Fig. B3Wd: CIE 14 colores del test y 2 + 16 pasos de gris (sf); $rgb/cmy0 \rightarrow rgb_d$ setrgbcolor



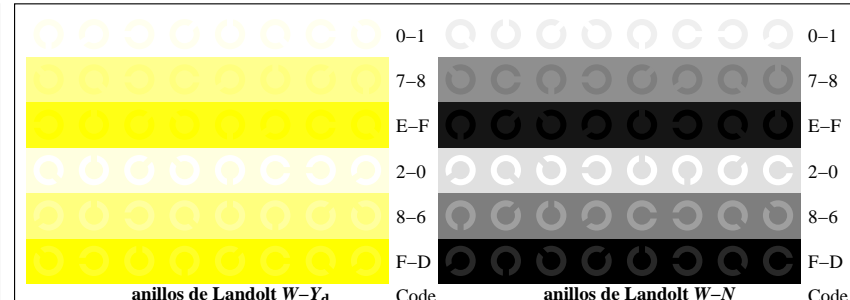
TS901-1, Fig. B4Wd: 16 equidistante pasos $W-C_d$; $W-M_d$; $W-Y_d$; $W-N$; $rgb/cmy0 \rightarrow rgb_d$ setrgbcolor



TS901-3, Fig. B5Wd: codigo y Landolt anillos N ; C_d ; M_d ; Y_d ; Z ; PS operator $rgb \rightarrow rgb_d$ setrgbcolor



TS901-5, Fig. B6Wd: anillos de Landolt $W-C_d$; $W-M_d$; PS operator $rgb \rightarrow rgb_d$ setrgbcolor



TS901-7, Fig. B7Wd: anillos de Landolt $W-Y_d$; $W-N$; PS operator $rgb \rightarrow rgb_d$ setrgbcolor