

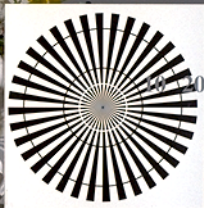
vea archivos semejantes: http://130.149.60.45/~farbmetrik/TS90/TS90.HTM
Información técnica: http://www.ps.bam.de o http://130.149.60.45/~farbmetrik

TUB matrícula: 20150701-TS90/TS90L0FP.PDF /PS
aplicación para la medida de display output, ninguna separación

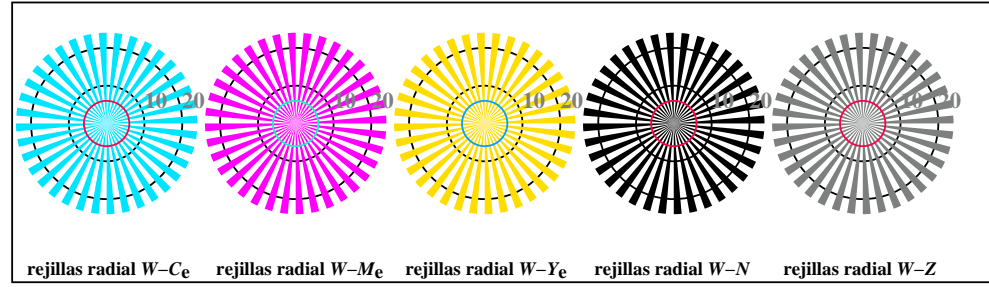
TUB material: code=thad4ta



192 x 128
384 x 256
768 x 512
1536 x 1024
3072 x 2048

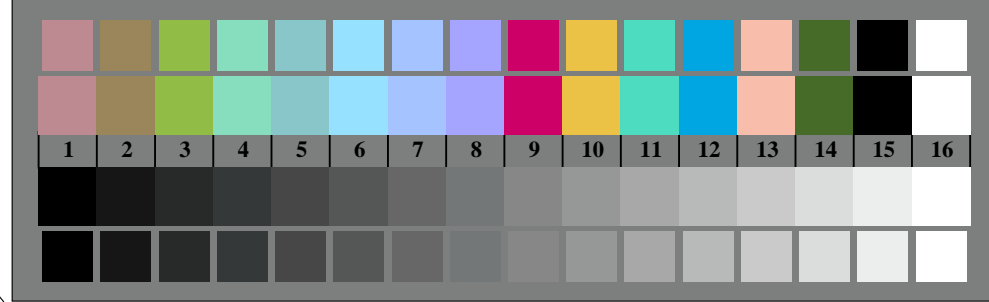


TS900-3, Fig. B1Wde: motivos florales, CIE 14 colores del test y 2 + 16 pasos de gris (nf); ; PS 3 colorimage



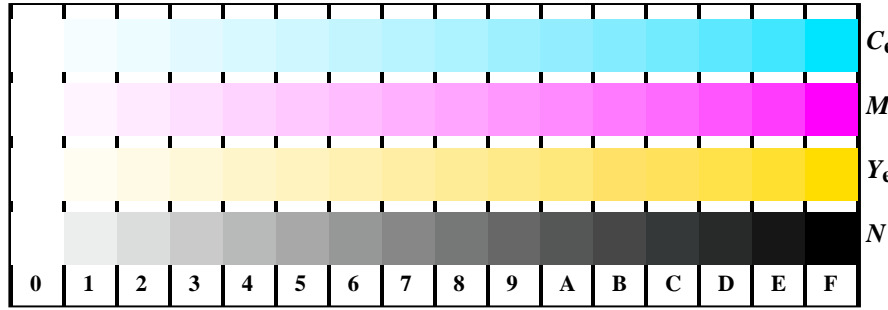
rejillas radial W-Ce rejillas radial W-Me rejillas radial W-Ye rejillas radial W-N rejillas radial W-Z

TS900-5, Fig. B2Wde: rejillas radial W-Ce; W-Me; W-Ye; W-N; PS operator rgb->rgbde setrgbcolor

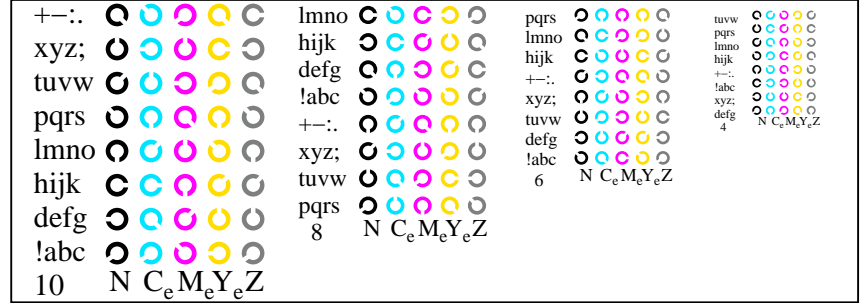


TS900-7, Fig. B3Wde: CIE 14 colores del test y 2 + 16 pasos de gris (sf); rgb/cmyk->rgbde setrgbcolor

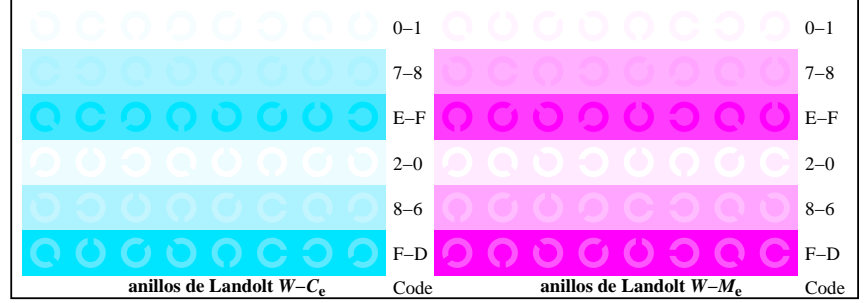
gráfico TS90; 2(ISO/IEC 15775 + ISO/IEC TR 24705)
test cromático gráfico CMYK, 3D=1, de=1, sRGB*



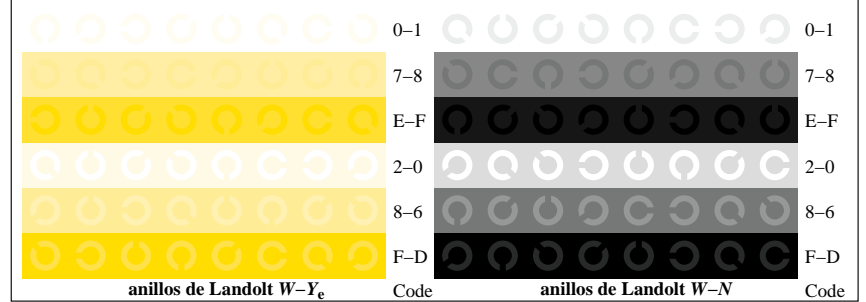
TS901-1, Fig. B4Wde: 16 equidistante pasos W-Ce; W-Me; W-Ye; W-N; rgb/cmy0->rgbde setrgbcolor



TS901-3, Fig. B5Wde: codigo y Landolt annilons; Ce; Me; Ye; Z; PS operator rgb->rgbde setrgbcolor



TS901-5, Fig. B6Wde: anillos de Landolt W-Ce; W-Me; PS operator rgb->rgbde setrgbcolor



TS901-7, Fig. B7Wde: anillos de Landolt W-Ye; W-N; PS operator rgb->rgbde setrgbcolor

entrada: rgb/cmyk -> rgbde
salida: 3D-linealización a rgb*de

