

iimp=128, OS=OSA colour difference pairs %

im	ia	d_rangeLAB	LABmin,max,ave	STRESS	CMCmin,max,ave	STRESS	C94min,max,ave	STRESS	C00min,max,ave	STRESS	C85min,max,ave	STRESS
128	128	0.0 to 99	7.33 21.63	14.32 24.54	3.56 22.81	11.49 32.85	2.67 14.8	8.75 21.6	2.87 15.55	8.89 22.73	14.18 152.11	44.66 44.22
128	0	0.0 to 5.0										
128	0	0.0 to 0.5										
128	0	0.5 to 1.0										
128	0	1.0 to 1.5										
128	0	1.5 to 2.0										
128	9	5.0 to 10	7.33 9.86	8.71 10.05	3.56 12.1	7.63 8.72	2.67 6.98	4.94 11.33	2.87 8.34	5.29 12.56	14.18 40.41	25.32 15.61
128	69	10 to 15	10.2 14.98	12.98 24.11	5.1 22.81	11.8 31.29	3.72 12.76	8.6 23.4	4.05 15.55	9.09 23.84	18.48 130.5	44.25 28.19
128	46	15 to 20	15.04 19.7	16.86 22.07	6.23 20.28	11.58 26.18	5.08 13.57	9.54 23.89	5.15 13.81	9.19 22.21	22.23 124.11	47.3 28.26
128	4	20 to 25	20.01 21.63	20.85 3.82	9.66 20.42	13.83 12.66	8.32 14.8	10.8 15.78	7.07 14.01	10.26 16.89	26.36 152.11	64.8 20.53
128	0	25 to 30										
128	0	30 to 99										

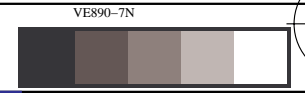
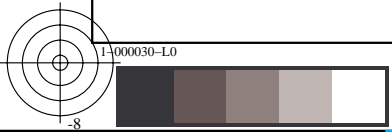
iimp=128, OS=OSA colour difference pairs %

im	ia	d_rangeC00	LABmin,max,ave	STRESS	CMCmin,max,ave	STRESS	C94min,max,ave	STRESS	C00min,max,ave	STRESS	C85min,max,ave	STRESS
128	128	0.0 to 99	7.33 21.63	14.32 24.54	3.56 22.81	11.49 32.85	2.67 14.8	8.75 21.6	2.87 15.55	8.89 22.73	14.18 152.11	44.66 44.22
128	6	0.0 to 5.0	7.33 14.28	9.61 9.91	3.56 7.53	5.05 10.6	2.67 4.43	3.68 13.4	2.87 4.75	3.75 15.09	15.39 29.69	22.56 19.14
128	0	0.0 to 0.5										
128	0	0.5 to 1.0										
128	0	1.0 to 1.5										
128	0	1.5 to 2.0										
128	83	5.0 to 10	8.75 21.63	14.43 24.48	5.78 22.81	10.51 31.82	4.67 12.14	7.99 23.76	5.15 9.87	7.88 23.36	14.18 130.5	37.18 28.21
128	38	10 to 15	10.63 20.68	14.9 21.48	9.59 20.42	14.39 23.72	8.13 14.8	11.17 23.63	10.13 14.25	11.75 20.69	26.16 152.11	64.9 28.3
128	1	15 to 20	11.98 11.98	11.98 0.1	20.91 20.91	20.91 0.1	10.79 10.79	10.79 0.1	15.55 15.55	15.55 0.1	28.79 28.79	28.79 0.1
128	0	20 to 25										
128	0	25 to 30										
128	0	30 to 99										

iimp=128, OS=OSA colour difference pairs %

im	ia	d_rangeC85	LABmin,max,ave	STRESS	CMCmin,max,ave	STRESS	C94min,max,ave	STRESS	C00min,max,ave	STRESS	C85min,max,ave	STRESS
128	116	0.0 to 99	7.33 21.63	14.23 23.87	3.56 22.81	11.41 32.45	2.67 12.85	8.39 22.16	2.87 15.55	8.61 23.39	14.18 82.27	37.02 37.18
128	0	0.0 to 5.0										
128	0	0.0 to 0.5										
128	0	0.5 to 1.0										
128	0	1.0 to 1.5										
128	0	1.5 to 2.0										
128	0	5.0 to 10										
128	1	10 to 15	9.01 9.01	9.01 0.1	6.28 6.28	6.28 0.1	5.18 5.18	5.18 0.1	5.97 5.97	5.97 0.1	14.18 14.18	14.18 0.1
128	3	15 to 20	7.33 10.69	9.14 4.32	3.56 9.47	5.63 4.37	2.67 5.83	3.76 9.06	2.87 7.07	4.3 12.25	15.39 18.48	17.01 22.37
128	13	20 to 25	8.39 15.33	11.92 13.64	4.78 14.48	9.57 15.37	3.72 7.89	6.15 15.91	3.98 9.11	6.73 16.66	20.28 24.8	22.93 13.74
128	26	25 to 30	7.51 21.63	14.66 20.02	5.45 20.91	10.47 22.63	4.21 10.79	7.59 21.3	3.87 15.55	7.87 19.96	25.12 29.72	27.71 27.56
128	73	30 to 99	8.94 21.07	14.77 24.01	6.23 22.81	12.38 30.99	5.08 12.85	9.31 24.25	5.72 14.25	9.42 24.09	30.08 82.27	43.98 28.66

see similar files: http://130.149.60.45/~farbmetrik/VE89/VE89.HTM  
 technical information: http://www.ps.bam.de or http://130.149.60.45/~farbmetrik



see similar files: http://130.149.60.45/~farbmetrik/VE89/VE89.HTM  
technical information: http://www.ps.bam.de or http://130.149.60.45/~farbmetrik

TUB registration: 20140801-VE89/VE89L0NA.TXT /PS  
application for measurement of display or printer output, no separation  
TUB material: code=rh4ta

iimp=844, MU=MUNSELL colour difference pairs %

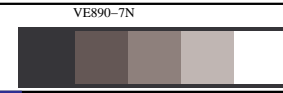
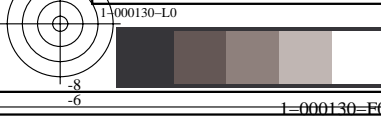
im	ia	d_rangeLAB	LABmin,max,ave	STRESS	CMCmin,max,ave	STRESS	C94min,max,ave	STRESS	C00min,max,ave	STRESS	C85min,max,ave	STRESS
844	844	0.0 to 99	4.17 22.59	10.05 17.21	3.37 17.95	8.26 31.39	2.71 12.3	7.35 31.36	2.55 16.22	6.84 30.2	7.56 128.5	54.17 54.86
844	17	0.0 to 5.0	4.17 4.97	4.63 22.76	3.67 8.5	6.27 19.13	3.14 3.96	3.58 21.61	2.89 5.02	3.56 35.0	7.56 24.08	17.73 22.67
844	0	0.0 to 0.5										
844	0	0.5 to 1.0										
844	0	1.0 to 1.5										
844	0	1.5 to 2.0										
844	411	5.0 to 10	5.01 9.99	8.58 18.55	3.37 12.89	6.82 25.03	2.71 9.92	6.14 26.53	2.55 9.56	5.67 25.13	9.23 86.67	39.97 54.83
844	389	10 to 15	10.0 14.94	11.33 19.05	4.55 16.69	9.55 24.76	3.41 10.86	8.63 26.67	3.23 12.5	7.99 25.56	10.66 128.5	72.02 55.78
844	23	15 to 20	15.18 19.34	16.72 20.82	5.63 17.95	12.8 24.39	4.32 11.77	9.18 19.92	3.95 15.5	9.9 32.82	17.38 76.22	35.55 23.64
844	4	20 to 25	20.81 22.59	21.89 26.73	12.73 14.91	13.48 18.95	11.32 12.3	11.75 27.17	10.59 16.22	12.17 43.83	33.19 52.0	38.12 16.61
844	0	25 to 30										
844	0	30 to 99										

iimp=844, MU=MUNSELL colour difference pairs %

im	ia	d_rangeC00	LABmin,max,ave	STRESS	CMCmin,max,ave	STRESS	C94min,max,ave	STRESS	C00min,max,ave	STRESS	C85min,max,ave	STRESS
844	844	0.0 to 99	4.17 22.59	10.05 17.21	3.37 17.95	8.26 31.39	2.71 12.3	7.35 31.36	2.55 16.22	6.84 30.2	7.56 128.5	54.17 54.86
844	230	0.0 to 5.0	4.17 15.18	8.58 22.98	3.37 11.17	5.71 24.25	2.71 5.51	4.26 20.63	2.55 4.99	4.01 27.08	7.56 49.51	25.68 29.07
844	0	0.0 to 0.5										
844	0	0.5 to 1.0										
844	0	1.0 to 1.5										
844	0	1.5 to 2.0										
844	527	5.0 to 10	4.74 19.17	10.37 16.5	5.28 16.76	9.03 26.01	3.85 10.86	8.22 24.85	5.02 9.71	7.47 23.16	12.0 128.5	61.08 49.52
844	84	10 to 15	10.12 22.59	11.77 20.61	9.09 17.95	10.17 24.5	7.47 11.79	10.13 17.8	10.01 13.83	10.31 27.35	19.37 114.41	89.03 27.31
844	3	15 to 20	18.57 20.81	19.57 29.82	13.6 14.91	14.19 21.47	11.48 12.3	11.85 30.28	15.06 16.22	15.59 43.45	42.96 52.0	47.58 1.18
844	0	20 to 25										
844	0	25 to 30										
844	0	30 to 99										

iimp=844, MU=MUNSELL colour difference pairs %

im	ia	d_rangeC85	LABmin,max,ave	STRESS	CMCmin,max,ave	STRESS	C94min,max,ave	STRESS	C00min,max,ave	STRESS	C85min,max,ave	STRESS
844	701	0.0 to 99	4.17 22.59	9.95 15.99	3.37 17.95	7.68 30.56	2.71 12.3	6.72 29.78	2.55 16.22	6.37 28.32	7.56 98.82	42.07 50.81
844	0	0.0 to 5.0										
844	0	0.0 to 0.5										
844	0	0.5 to 1.0										
844	0	1.0 to 1.5										
844	0	1.5 to 2.0										
844	2	5.0 to 10	4.69 5.26	4.97 24.49	4.15 4.79	4.47 18.8	3.14 3.58	3.36 24.87	3.54 4.08	3.81 34.0	7.56 9.23	8.4 1.25
844	27	10 to 15	4.5 14.85	8.18 19.97	3.7 9.16	6.03 23.38	3.14 7.08	4.56 19.18	2.95 8.23	5.19 32.64	10.27 14.92	13.31 24.39
844	106	15 to 20	4.42 15.18	9.06 21.79	3.37 11.15	6.52 25.02	2.71 7.52	4.85 18.82	2.55 10.45	5.1 27.54	15.03 19.95	17.82 28.14
844	115	20 to 25	4.17 14.75	9.31 24.12	3.68 13.27	7.28 25.54	3.1 8.17	5.36 21.78	2.89 10.59	5.53 29.96	20.0 24.96	22.29 27.11
844	102	25 to 30	5.39 17.87	10.68 21.78	3.74 16.41	8.38 24.74	3.14 9.8	6.18 18.7	2.93 11.82	6.15 27.64	25.13 29.75	27.34 27.46
844	349	30 to 99	6.19 22.59	10.38 20.08	3.54 17.95	8.12 24.45	2.85 12.3	8.08 26.57	2.68 16.22	7.2 26.42	30.08 98.82	62.67 56.66



iimp=1308, PO=POINTER colour difference pairs %

im	ia	d_rangeLAB	LABmin,max,ave	STRESS	CMCmin,max,ave	STRESS	C94min,max,ave	STRESS	C00min,max,ave	STRESS	C85min,max,ave	STRESS
1308	1308	0.0 to 99	0.87 26.19 8.9	29.68	0.5 29.0 7.68	38.53	0.47 19.18 6.12	30.64	0.43 21.25 6.45	34.01	2.44 144.82 38.31	40.07
1308	268	0.0 to 5.0	0.87 4.99 3.36	25.76	0.5 7.12 2.83	32.67	0.47 4.44 2.39	26.16	0.43 6.45 2.47	31.1	2.44 47.47 16.75	34.33
1308	0	0.0 to 0.5										
1308	1	0.5 to 1.0	0.87 0.87 0.87	0.1	0.5 0.5 0.5	0.1	0.51 0.51 0.51	0.1	0.52 0.52 0.52	0.1	3.89 3.89 3.89	0.1
1308	8	1.0 to 1.5	1.12 1.48 1.36	25.49	0.72 1.65 1.12	40.26	0.74 1.31 1.04	28.7	0.79 1.46 1.01	34.86	3.6 10.5 6.63	24.97
1308	24	1.5 to 2.0	1.5 1.91 1.69	32.63	0.56 2.3 1.37	39.74	0.47 1.8 1.26	31.16	0.43 2.39 1.34	39.04	2.77 15.44 8.6	25.59
1308	567	5.0 to 10	5.01 9.99 7.44	24.76	2.15 14.79 6.32	32.91	1.65 9.27 5.12	24.88	1.76 12.02 5.39	28.99	8.48 79.77 31.98	35.74
1308	324	10 to 15	10.02 14.98 12.23	25.08	4.16 24.13 10.69	31.85	3.16 14.09 8.39	25.31	3.5 18.09 8.99	30.23	16.1 108.79 50.58	33.13
1308	136	15 to 20	15.01 19.87 16.68	26.19	8.02 25.66 14.35	32.9	6.31 17.67 11.3	26.18	5.68 18.39 11.68	31.38	28.52 125.54 71.37	36.23
1308	10	20 to 25	20.02 24.26 21.85	24.12	13.26 29.0 21.24	37.7	10.13 18.81 15.21	28.3	9.0 21.25 15.92	33.16	66.12 144.82 103.8	25.62
1308	3	25 to 30	25.47 26.19 25.83	19.67	25.23 27.33 26.38	29.66	17.74 19.18 18.59	25.6	17.48 21.22 19.86	27.78	94.53 133.49 120.2	28.48
1308	0	30 to 99										

iimp=1308, PO=POINTER colour difference pairs %

im	ia	d_rangeC00	LABmin,max,ave	STRESS	CMCmin,max,ave	STRESS	C94min,max,ave	STRESS	C00min,max,ave	STRESS	C85min,max,ave	STRESS
1308	1308	0.0 to 99	0.87 26.19 8.9	29.68	0.5 29.0 7.68	38.53	0.47 19.18 6.12	30.64	0.43 21.25 6.45	34.01	2.44 144.82 38.31	40.07
1308	549	0.0 to 5.0	0.87 12.69 5.2	24.61	0.5 9.87 3.87	32.75	0.47 6.37 3.23	24.82	0.43 4.98 3.19	28.94	2.44 64.3 22.28	35.61
1308	1	0.0 to 0.5	1.67 1.67 1.67	0.1	0.56 0.56 0.56	0.1	0.47 0.47 0.47	0.1	0.43 0.43 0.43	0.1	2.77 2.77 2.77	0.1
1308	9	0.5 to 1.0	0.87 2.19 1.48	24.74	0.5 1.19 0.9	38.95	0.51 1.3 0.83	28.84	0.52 0.97 0.81	34.1	2.44 10.5 5.12	25.97
1308	35	1.0 to 1.5	1.36 3.95 1.97	32.86	0.96 1.98 1.35	39.2	0.91 1.51 1.25	31.89	1.02 1.48 1.24	39.66	3.11 15.44 9.34	28.83
1308	56	1.5 to 2.0	1.59 5.57 3.04	32.03	1.37 3.97 2.19	39.07	1.17 2.64 1.85	32.42	1.5 1.98 1.78	38.91	4.39 27.75 14.39	32.0
1308	535	5.0 to 10	4.12 20.02 10.2	24.49	4.43 18.71 8.47	32.53	3.81 11.38 6.91	24.65	5.0 9.99 7.19	28.79	9.54 108.79 44.58	35.66
1308	188	10 to 15	7.82 21.07 14.24	25.56	8.67 23.03 14.09	34.22	6.91 15.36 10.67	26.36	10.0 14.73 11.9	31.72	16.27 125.54 59.73	34.59
1308	33	15 to 20	12.78 25.81 17.58	33.42	12.32 25.66 20.11	38.62	10.87 17.88 14.45	30.94	15.04 18.74 16.43	38.8	28.52 144.82 72.97	26.26
1308	3	20 to 25	24.26 26.19 25.31	19.67	26.56 29.0 27.63	29.66	18.81 19.18 18.95	25.6	20.87 21.25 21.11	27.78	127.97 133.49 131.4	28.48
1308	0	25 to 30										
1308	0	30 to 99										

iimp=1308, PO=POINTER colour difference pairs %

im	ia	d_rangeC85	LABmin,max,ave	STRESS	CMCmin,max,ave	STRESS	C94min,max,ave	STRESS	C00min,max,ave	STRESS	C85min,max,ave	STRESS
1308	1283	0.0 to 99	0.87 25.81 8.7	29.41	0.5 25.66 7.47	38.45	0.47 17.88 5.96	30.52	0.43 18.39 6.3	34.01	2.44 98.43 36.86	39.96
1308	16	0.0 to 5.0	0.87 2.94 1.71	34.4	0.5 2.31 1.3	43.38	0.47 2.05 0.99	34.75	0.43 2.16 1.12	40.73	2.44 4.75 3.67	29.73
1308	0	0.0 to 0.5										
1308	0	0.5 to 1.0										
1308	0	1.0 to 1.5										
1308	0	1.5 to 2.0										
1308	52	5.0 to 10	1.12 7.58 3.13	32.44	0.72 5.93 2.45	39.4	0.89 4.27 1.96	33.14	0.83 6.45 2.21	39.55	5.16 9.96 8.23	30.19
1308	116	10 to 15	1.31 9.26 4.47	26.71	0.84 9.7 3.51	33.6	1.13 6.58 2.81	26.11	0.97 9.85 3.13	31.96	10.03 14.96 12.95	37.1
1308	143	15 to 20	1.71 10.26 5.26	25.93	1.28 11.77 4.2	32.52	1.37 8.47 3.39	25.82	1.2 12.02 3.7	30.9	15.1 19.94 17.46	36.45
1308	112	20 to 25	2.11 12.69 7.09	27.02	1.6 13.32 5.83	33.98	1.96 9.62 4.66	26.43	1.54 13.2 5.08	32.26	20.1 24.99 22.56	37.45
1308	130	25 to 30	2.84 15.89 7.8	26.61	2.05 19.21 6.62	33.41	2.51 12.46 5.29	26.56	1.79 17.0 5.75	31.47	25.04 29.99 27.29	36.29
1308	714	30 to 99	3.3 25.81 11.06	25.82	2.82 25.66 9.69	35.34	2.64 17.88 7.72	26.62	2.1 18.39 8.04	30.73	30.02 98.43 51.44	36.47

see similar files: http://130.149.60.45/~farbmetrik/VE89/VE89L0NA.TXT /.PS  
 technical information: http://www.ps.bam.de or http://130.149.60.45/~farbmetrik

TUB registration: 20140801-VE89/VE89L0NA.TXT /.PS  
 application for measurement of display or printer output, no separation  
 TUB material: code=rh4ta

see similar files: <http://130.149.60.45/~farbmetrik/VE89/VE89.HTM>  
technical information: <http://www.ps.bam.de> or <http://130.149.60.45/~farbmetrik>

TUB registration: 20140801-VE89/VE89L0NA.TXT /.PS  
application for measurement of display or printer output, no separation  
TUB material: code=rh4ta

iimp=292, GU=GUAN colour difference pairs %

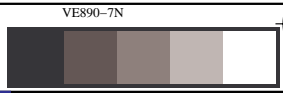
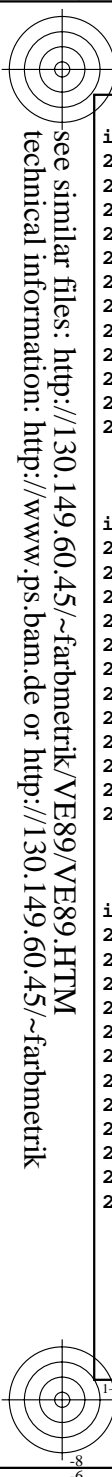
im	ia	d_rangeLAB	LABmin,max,ave	STRESS	CMCmin,max,ave	STRESS	C94min,max,ave	STRESS	C00min,max,ave	STRESS	C85min,max,ave	STRESS
292	292	0.0 to 99	4.79 20.86	11.42 24.95	2.78 27.8	9.2 34.34	2.3 13.98	8.0 18.84	2.29 15.35	8.19 19.54	7.6 130.36	52.2 42.66
292	1	0.0 to 5.0	4.79 4.79	4.79 0.1	2.78 2.78	2.78 0.1	2.5 2.5	2.5 0.1	2.65 2.65	2.65 0.1	20.02 20.02	20.02 0.1
292	0	0.0 to 0.5										
292	0	0.5 to 1.0										
292	0	1.0 to 1.5										
292	0	1.5 to 2.0										
292	95	5.0 to 10	5.33 9.97	8.64 15.14	2.86 17.18	6.85 30.05	2.3 9.82	6.4 21.86	2.29 11.12	6.55 22.99	7.6 103.49	48.87 27.5
292	172	10 to 15	10.01 14.83	12.27 17.81	4.99 22.6	10.02 30.21	3.99 13.98	8.67 23.1	3.9 15.35	8.84 23.53	14.3 130.36	54.64 29.11
292	23	15 to 20	15.05 18.64	16.44 14.15	6.14 27.8	13.1 22.91	5.03 13.35	9.84 17.14	4.66 15.33	10.26 20.76	24.73 116.99	48.38 12.15
292	1	20 to 25	20.86 20.86	20.86 0.1	9.35 9.35	9.35 0.1	8.7 8.7	8.7 0.1	9.83 9.83	9.83 0.1	67.31 67.31	67.31 0.1
292	0	25 to 30										
292	0	30 to 99										

iimp=292, GU=GUAN colour difference pairs %

im	ia	d_rangeC00	LABmin,max,ave	STRESS	CMCmin,max,ave	STRESS	C94min,max,ave	STRESS	C00min,max,ave	STRESS	C85min,max,ave	STRESS
292	292	0.0 to 99	4.79 20.86	11.42 24.95	2.78 27.8	9.2 34.34	2.3 13.98	8.0 18.84	2.29 15.35	8.19 19.54	7.6 130.36	52.2 42.66
292	35	0.0 to 5.0	4.79 15.27	9.73 13.76	2.78 7.38	5.12 21.4	2.3 5.12	4.04 17.58	2.29 4.99	4.04 18.85	7.6 29.69	19.76 13.57
292	0	0.0 to 0.5										
292	0	0.5 to 1.0										
292	0	1.0 to 1.5										
292	0	1.5 to 2.0										
292	186	5.0 to 10	6.31 20.86	11.14 17.91	4.87 17.59	8.93 29.79	4.19 10.8	7.55 22.67	5.01 9.99	7.63 23.38	14.3 105.73	47.66 30.32
292	68	10 to 15	9.25 18.64	12.89 15.09	8.43 22.6	11.64 30.89	7.42 13.98	11.11 23.6	10.21 14.81	11.54 24.89	23.68 130.36	81.48 22.43
292	3	15 to 20	13.81 17.77	15.45 18.76	13.02 27.8	18.6 20.0	10.79 13.35	12.07 17.69	15.07 15.35	15.25 22.12	41.55 56.2	48.27 6.25
292	0	20 to 25										
292	0	25 to 30										
292	0	30 to 99										

iimp=292, GU=GUAN colour difference pairs %

im	ia	d_rangeC85	LABmin,max,ave	STRESS	CMCmin,max,ave	STRESS	C94min,max,ave	STRESS	C00min,max,ave	STRESS	C85min,max,ave	STRESS
292	242	0.0 to 99	4.79 20.86	11.37 23.11	2.78 27.8	9.24 33.58	2.3 13.35	7.3 20.2	2.29 15.35	7.65 21.46	7.6 97.42	40.27 45.31
292	0	0.0 to 5.0										
292	0	0.0 to 0.5										
292	0	0.5 to 1.0										
292	0	1.0 to 1.5										
292	0	1.5 to 2.0										
292	1	5.0 to 10	7.57 7.57	7.57 0.1	3.29 3.29	3.29 0.1	2.33 2.33	2.33 0.1	2.42 2.42	2.42 0.1	7.6 7.6	7.6 0.1
292	7	10 to 15	5.33 11.61	8.51 15.82	2.96 8.48	5.08 18.9	2.5 5.94	3.94 17.32	2.41 7.22	4.18 22.19	11.71 14.94	13.86 7.53
292	27	15 to 20	6.31 14.0	9.44 14.12	2.86 9.63	6.24 22.75	2.3 6.18	4.51 16.85	2.29 7.76	4.95 19.71	15.37 19.85	17.91 13.51
292	43	20 to 25	4.79 15.1	10.88 13.92	2.78 13.62	7.77 25.11	2.5 9.16	5.89 18.56	2.65 14.29	6.62 20.62	20.02 24.79	22.29 14.08
292	36	25 to 30	6.13 16.83	12.19 13.72	3.92 16.47	9.35 21.33	3.3 9.62	6.78 17.36	3.82 10.45	7.24 18.8	25.0 29.93	27.36 14.69
292	128	30 to 99	7.16 20.86	11.89 17.11	5.65 27.8	10.61 30.79	4.57 13.35	8.72 23.44	5.01 15.35	8.92 23.95	30.03 97.42	56.35 29.03



iimp=144, ZH=ZHU colour difference pairs %

im	ia	d_rangeLAB	LABmin,max,ave	STRESS	CMCmin,max,ave	STRESS	C94min,max,ave	STRESS	C00min,max,ave	STRESS	C85min,max,ave	STRESS
144	144	0.0 to 99	4.85 19.79 9.91 26.31		3.16 27.5 7.96 47.14		2.58 19.55 6.38 34.56		2.44 15.53 5.8 30.99		9.55 121.76 41.71 36.76	
144	3	0.0 to 5.0	4.85 4.96 4.91 12.36		3.24 3.82 3.44 35.0		3.35 3.43 3.39 12.36		3.39 3.69 3.5 4.64		10.61 23.15 18.87 12.96	
144	0	0.0 to 0.5										
144	0	0.5 to 1.0										
144	0	1.0 to 1.5										
144	0	1.5 to 2.0										
144	70	5.0 to 10	5.0 9.98 7.4 27.77		3.16 14.13 5.87 47.66		2.58 9.23 4.86 33.8		2.44 9.85 4.74 32.56		9.55 91.06 31.38 29.74	
144	62	10 to 15	10.02 14.59 11.92 29.65		4.0 21.98 8.82 48.22		2.81 14.12 6.98 34.86		2.64 12.49 6.15 33.24		13.08 121.76 49.61 31.42	
144	9	15 to 20	15.55 19.79 17.2 23.66		5.69 27.5 19.71 40.03		3.99 19.55 15.06 24.78		3.89 15.53 12.34 16.6		54.01 117.36 75.2 33.08	
144	0	20 to 25										
144	0	25 to 30										
144	0	30 to 99										

iimp=144, ZH=ZHU colour difference pairs %

im	ia	d_rangeC00	LABmin,max,ave	STRESS	CMCmin,max,ave	STRESS	C94min,max,ave	STRESS	C00min,max,ave	STRESS	C85min,max,ave	STRESS
144	144	0.0 to 99	4.85 19.79 9.91 26.31		3.16 27.5 7.96 47.14		2.58 19.55 6.38 34.56		2.44 15.53 5.8 30.99		9.55 121.76 41.71 36.76	
144	73	0.0 to 5.0	4.85 16.42 8.06 27.22		3.16 10.19 4.93 48.47		2.58 5.71 4.15 34.06		2.44 4.98 4.05 32.87		9.55 65.5 29.18 29.14	
144	0	0.0 to 0.5										
144	0	0.5 to 1.0										
144	0	1.0 to 1.5										
144	0	1.5 to 2.0										
144	60	5.0 to 10	6.3 16.88 11.11 30.1		4.62 21.98 9.28 47.97		4.58 11.96 7.42 34.41		5.02 9.85 6.59 32.12		15.64 121.76 51.25 32.0	
144	9	10 to 15	10.34 19.79 15.11 23.66		9.41 27.31 19.48 40.03		10.14 19.55 14.97 24.78		10.58 14.57 12.49 16.6		32.12 117.36 73.39 33.08	
144	2	15 to 20	17.12 19.13 18.13 0.1		26.21 27.5 26.85 4.84		16.93 18.9 17.91 0.1		15.49 15.53 15.51 5.52		67.57 72.73 70.15 11.75	
144	0	20 to 25										
144	0	25 to 30										
144	0	30 to 99										

iimp=144, ZH=ZHU colour difference pairs %

im	ia	d_rangeC85	LABmin,max,ave	STRESS	CMCmin,max,ave	STRESS	C94min,max,ave	STRESS	C00min,max,ave	STRESS	C85min,max,ave	STRESS
144	141	0.0 to 99	4.85 19.79 9.82 26.18		3.16 27.5 7.85 47.44		2.58 19.55 6.22 34.55		2.44 15.53 5.71 30.98		9.55 95.98 40.08 36.73	
144	0	0.0 to 5.0										
144	0	0.0 to 0.5										
144	0	0.5 to 1.0										
144	0	1.0 to 1.5										
144	0	1.5 to 2.0										
144	1	5.0 to 10	7.55 7.55 7.55 0.1		3.16 3.16 3.16 0.1		2.58 2.58 2.58 0.1		2.44 2.44 2.44 0.1		9.55 9.55 9.55 0.1	
144	18	10 to 15	4.85 11.06 6.44 32.93		3.37 7.47 4.63 41.09		2.71 4.6 3.66 28.62		2.55 4.98 3.88 26.66		10.61 14.98 12.63 39.84	
144	13	15 to 20	5.42 12.61 9.14 30.25		3.82 10.27 6.01 42.25		2.81 6.76 4.61 29.11		2.64 7.25 4.67 27.12		15.01 19.43 17.44 37.84	
144	15	20 to 25	4.92 12.99 8.42 30.33		3.24 12.09 6.31 41.4		3.39 6.68 4.78 28.5		3.39 7.82 5.18 26.86		20.29 24.92 22.69 38.59	
144	12	25 to 30	6.16 10.52 8.03 30.48		4.02 13.72 7.22 40.64		4.25 8.97 5.87 28.27		3.9 9.85 5.68 19.98		25.87 29.9 27.57 37.68	
144	82	30 to 99	5.46 19.79 11.22 26.22		3.19 27.5 9.28 48.82		3.11 19.55 7.39 34.1		2.9 15.53 6.42 32.79		30.66 95.98 55.08 28.17	

see similar files: http://130.149.60.45/~farbmetrik/VE89/VE89L0NA.TXT /.PS  
 technical information: http://www.ps.bam.de or http://130.149.60.45/~farbmetrik

TUB registration: 20140801-VE89/VE89L0NA.TXT /.PS  
 application for measurement of display or printer output, no separation  
 TUB material: code=rh4ta

iimp=238, BA=BADU\_P colour difference pairs %

im	ia	d_rangeLAB	LABmin,max,ave	STRESS	CMCmin,max,ave	STRESS	C94min,max,ave	STRESS	C00min,max,ave	STRESS	C85min,max,ave	STRESS
238	238	0.0 to 99	4.11 35.78	11.74 30.65	2.89 22.67	9.42 32.4	2.94 14.94	7.65 20.17	3.28 18.02	7.92 19.27	10.78 124.47	47.7 39.61
238	8	0.0 to 5.0	4.11 4.92	4.63 10.71	2.89 6.01	4.64 19.25	3.81 4.8	4.45 10.71	3.4 4.61	3.89 20.03	22.01 54.79	40.72 6.61
238	0	0.0 to 0.5										
238	0	0.5 to 1.0										
238	0	1.0 to 1.5										
238	0	1.5 to 2.0										
238	33	5.0 to 10	5.0 9.96	7.09 28.1	3.22 13.11	6.61 13.94	3.02 9.6	5.49 24.72	3.57 12.13	5.95 16.53	11.02 94.29	34.05 55.68
238	174	10 to 15	10.11 14.94	11.99 24.88	4.21 22.67	9.88 34.29	2.94 14.64	7.8 20.26	3.28 15.35	8.07 19.42	10.78 124.47	45.71 42.15
238	17	15 to 20	15.17 19.3	16.48 30.7	4.21 22.67	11.96 16.37	5.02 14.94	11.65 28.54	5.68 15.78	11.49 22.07	23.86 120.42	101.1 11.88
238	4	20 to 25	20.19 24.47	22.85 5.26	6.46 11.28	9.36 15.75	4.41 9.22	6.85 5.27	4.9 11.0	8.12 9.34	17.05 47.72	29.77 6.12
238	1	25 to 30	29.29 29.29	29.29 0.1	9.38 9.38	9.38 0.1	6.39 6.39	6.39 0.1	7.47 7.47	7.47 0.1	27.58 27.58	27.58 0.1
238	1	30 to 99	35.78 35.78	35.78 0.1	18.15 18.15	18.15 0.1	14.89 14.89	14.89 0.1	18.02 18.02	18.02 0.1	84.67 84.67	84.67 0.1

iimp=238, BA=BADU\_P colour difference pairs %

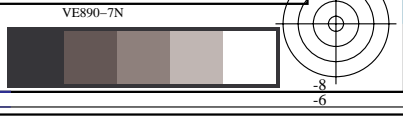
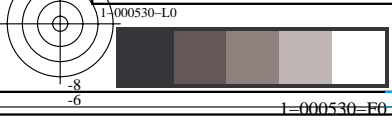
im	ia	d_rangeC00	LABmin,max,ave	STRESS	CMCmin,max,ave	STRESS	C94min,max,ave	STRESS	C00min,max,ave	STRESS	C85min,max,ave	STRESS
238	238	0.0 to 99	4.11 35.78	11.74 30.65	2.89 22.67	9.42 32.4	2.94 14.94	7.65 20.17	3.28 18.02	7.92 19.27	10.78 124.47	47.7 39.61
238	37	0.0 to 5.0	4.11 20.19	8.24 26.6	2.89 8.71	5.24 13.88	2.94 6.41	4.51 24.47	3.28 4.98	4.22 16.47	10.78 63.28	32.05 54.45
238	0	0.0 to 0.5										
238	0	0.5 to 1.0										
238	0	1.0 to 1.5										
238	0	1.5 to 2.0										
238	150	5.0 to 10	5.12 29.29	11.67 23.5	4.87 22.67	9.33 29.68	3.9 12.04	7.23 19.48	5.0 9.97	7.42 17.78	13.77 124.47	40.6 42.24
238	47	10 to 15	9.83 24.38	13.99 25.86	8.56 18.09	12.39 13.69	7.51 14.64	10.89 24.08	10.02 14.68	11.73 15.95	23.56 120.42	78.62 55.53
238	4	15 to 20	14.44 35.78	20.08 5.26	12.47 18.15	16.5 15.75	13.0 14.94	14.25 5.27	15.08 18.02	16.06 9.34	84.67 102.67	95.72 6.12
238	0	20 to 25										
238	0	25 to 30										
238	0	30 to 99										

iimp=238, BA=BADU\_P colour difference pairs %

im	ia	d_rangeC85	LABmin,max,ave	STRESS	CMCmin,max,ave	STRESS	C94min,max,ave	STRESS	C00min,max,ave	STRESS	C85min,max,ave	STRESS
238	212	0.0 to 99	4.11 35.78	11.38 27.53	2.89 22.67	9.08 33.99	2.94 14.89	7.14 19.42	3.28 18.02	7.49 19.25	10.78 98.22	39.97 40.18
238	0	0.0 to 5.0										
238	0	0.0 to 0.5										
238	0	0.5 to 1.0										
238	0	1.0 to 1.5										
238	0	1.5 to 2.0										
238	0	5.0 to 10										
238	12	10 to 15	5.12 12.64	8.36 19.16	4.21 7.77	5.83 17.95	2.94 5.32	3.92 19.16	3.28 7.18	4.77 21.51	10.78 14.67	12.83 8.63
238	16	15 to 20	5.38 20.19	10.58 30.84	4.47 8.65	6.8 17.46	3.54 6.52	4.98 27.33	3.55 6.87	5.74 23.06	15.66 19.84	18.23 37.17
238	41	20 to 25	4.7 17.39	11.15 26.11	4.29 12.15	8.19 13.03	3.52 8.83	6.0 23.33	3.92 12.13	6.79 15.35	20.01 24.96	22.98 54.18
238	29	25 to 30	10.58 29.29	13.38 30.97	5.56 15.91	9.69 14.69	4.7 10.47	6.83 26.42	4.26 12.09	7.69 17.57	25.14 29.96	27.34 54.84
238	114	30 to 99	4.11 35.78	11.39 20.81	2.89 22.67	9.91 27.86	4.11 14.89	8.26 18.54	3.4 18.02	8.21 17.61	30.27 98.22	55.21 41.78

see similar files: http://130.149.60.45/~farbmetrik/VE89/VE89L0NA.TXT /.PS  
 technical information: http://www.ps.bam.de or http://130.149.60.45/~farbmetrik

TUB registration: 20140801-VE89/VE89L0NA.TXT /.PS  
 application for measurement of display or printer output, no separation  
 TUB material: code=rh4ta



iimp=80, RL=RICHTER\_L colour difference pairs %

im	ia	d_rangeLAB	LABmin,max,ave	STRESS	CMCmin,max,ave	STRESS	C94min,max,ave	STRESS	C00min,max,ave	STRESS	C85min,max,ave	STRESS
80	80	0.0 to 99	1.38 36.6	11.11 47.4	1.04 51.53	7.57 66.55	1.35 34.83	6.49 56.26	1.34 22.9	6.19 53.84	7.4 129.45	36.33 52.86
80	13	0.0 to 5.0	1.38 4.93	3.27 27.02	1.04 5.06	2.59 45.89	1.35 4.91	2.85 45.33	1.34 4.21	2.7 39.55	9.34 55.21	27.61 42.55
80	0	0.0 to 0.5										
80	0	0.5 to 1.0										
80	2	1.0 to 1.5	1.38 1.39	1.38 10.6	1.04 1.11	1.07 4.15	1.35 1.38	1.37 4.06	1.34 1.36	1.35 4.72	12.74 13.71	13.22 7.57
80	0	1.5 to 2.0										
80	27	5.0 to 10	5.14 9.99	7.54 37.18	2.6 13.79	5.7 50.6	2.02 9.55	4.91 49.66	2.0 11.27	4.95 48.6	7.4 91.51	30.97 39.72
80	17	10 to 15	10.1 14.05	11.63 33.1	4.56 14.92	8.59 42.93	3.47 11.3	6.97 40.7	3.85 13.18	7.41 36.3	12.23 105.28	38.52 38.74
80	16	15 to 20	15.22 19.9	17.21 31.3	4.91 19.7	9.34 43.1	3.35 19.89	9.11 41.0	3.12 13.1	8.03 36.52	23.49 129.45	48.14 39.09
80	5	20 to 25	20.07 24.29	21.37 36.77	6.43 13.24	9.2 45.02	4.43 11.58	7.23 42.89	4.87 9.75	7.18 45.8	18.0 52.43	30.61 33.74
80	1	25 to 30	26.36 26.36	26.36 0.1	25.27 25.27	25.27 0.1	13.97 13.97	13.97 0.1	13.51 13.51	13.51 0.1	55.67 55.67	55.67 0.1
80	1	30 to 99	36.6 36.6	36.6 0.1	51.53 51.53	51.53 0.1	34.83 34.83	34.83 0.1	22.9 22.9	22.9 0.1	77.35 77.35	77.35 0.1

iimp=80, RL=RICHTER\_L colour difference pairs %

im	ia	d_rangeC00	LABmin,max,ave	STRESS	CMCmin,max,ave	STRESS	C94min,max,ave	STRESS	C00min,max,ave	STRESS	C85min,max,ave	STRESS
80	80	0.0 to 99	1.38 36.6	11.11 47.4	1.04 51.53	7.57 66.55	1.35 34.83	6.49 56.26	1.34 22.9	6.19 53.84	7.4 129.45	36.33 52.86
80	34	0.0 to 5.0	1.38 20.07	7.45 41.31	1.04 6.61	3.78 50.31	1.35 5.53	3.33 50.4	1.34 4.94	3.19 47.8	7.4 58.37	23.47 40.47
80	0	0.0 to 0.5										
80	0	0.5 to 1.0										
80	2	1.0 to 1.5	1.38 1.39	1.38 10.6	1.04 1.11	1.07 4.15	1.35 1.38	1.37 4.06	1.34 1.36	1.35 4.72	12.74 13.71	13.22 7.57
80	2	1.5 to 2.0	2.31 2.54	2.42 10.6	1.85 1.89	1.87 4.15	1.55 1.62	1.59 4.06	1.64 1.76	1.7 4.72	9.34 10.96	10.15 7.57
80	33	5.0 to 10	6.44 24.29	12.62 41.64	4.16 14.92	8.27 50.71	4.6 11.58	6.85 50.87	5.0 9.75	6.74 48.27	15.64 96.23	39.04 40.84
80	12	10 to 15	9.99 26.36	15.23 29.43	7.8 25.27	12.72 47.88	7.54 19.89	12.09 47.67	10.28 13.51	11.81 42.95	23.57 129.45	61.9 46.11
80	0	15 to 20										
80	1	20 to 25	36.6 36.6	36.6 0.1	51.53 51.53	51.53 0.1	34.83 34.83	34.83 0.1	22.9 22.9	22.9 0.1	77.35 77.35	77.35 0.1
80	0	25 to 30										
80	0	30 to 99										

iimp=80, RL=RICHTER\_L colour difference pairs %

im	ia	d_rangeC85	LABmin,max,ave	STRESS	CMCmin,max,ave	STRESS	C94min,max,ave	STRESS	C00min,max,ave	STRESS	C85min,max,ave	STRESS
80	76	0.0 to 99	1.38 36.6	10.81 47.99	1.04 51.53	7.47 66.84	1.35 34.83	5.94 56.4	1.34 22.9	5.94 53.82	7.4 96.23	31.97 51.54
80	0	0.0 to 5.0										
80	0	0.0 to 0.5										
80	0	0.5 to 1.0										
80	0	1.0 to 1.5										
80	0	1.5 to 2.0										
80	4	5.0 to 10	2.31 7.44	5.14 26.69	1.85 3.35	2.67 15.72	1.55 2.81	2.27 16.84	1.64 2.65	2.19 16.18	7.4 9.86	8.69 27.22
80	10	10 to 15	1.38 13.64	7.09 36.88	1.04 5.45	3.28 44.01	1.35 4.77	2.86 41.0	1.34 4.24	2.69 40.41	10.96 14.99	13.1 46.16
80	10	15 to 20	3.68 20.72	8.87 36.88	2.45 9.11	5.19 44.01	2.14 7.42	4.16 41.0	2.23 6.85	4.3 40.41	15.11 19.95	17.49 46.16
80	11	20 to 25	2.51 21.64	12.36 32.35	1.74 9.46	6.89 46.7	2.51 7.88	5.49 46.05	2.25 12.13	6.09 42.96	20.31 24.74	22.88 47.1
80	7	25 to 30	2.78 17.35	11.11 24.19	2.01 14.16	7.46 27.91	2.78 9.94	5.58 25.44	2.61 13.18	6.01 24.41	25.41 29.42	26.63 19.9
80	34	30 to 99	3.74 36.6	12.57 41.31	2.83 51.53	10.13 50.31	3.47 34.83	8.02 50.4	3.66 22.9	7.75 47.8	30.31 96.23	48.56 40.47

see similar files: http://130.149.60.45/~farbmetrik/VE89/VE89L0NA.TXT /.PS  
 technical information: http://www.ps.bam.de or http://130.149.60.45/~farbmetrik

TUB registration: 20140801-VE89/VE89L0NA.TXT /.PS  
 application for measurement of display or printer output, no separation  
 TUB material: code=rh4ta

iimp=624, KL=KITTELMANN\_L colour difference pairs %

im	ia	d_rangeLAB	LABmin,max,ave	STRESS	CMCmin,max,ave	STRESS	C94min,max,ave	STRESS	C00min,max,ave	STRESS	C85min,max,ave	STRESS
624	624	0.0 to 99	1.91 43.77	21.21 25.07	1.46 59.86	17.04 43.11	1.89 43.77	15.48 33.16	1.89 34.08	14.25 28.87	13.94 387.09	118.69 66.5
624	6	0.0 to 5.0	1.91 4.88	3.23 14.11	1.46 3.0	2.12 14.06	1.89 3.5	2.52 14.11	1.89 3.29	2.41 11.84	19.66 32.12	23.94 5.32
624	0	0.0 to 0.5										
624	0	0.5 to 1.0										
624	0	1.0 to 1.5										
624	1	1.5 to 2.0	1.91 1.91	1.91 0.1	1.46 1.46	1.46 0.1	1.89 1.89	1.89 0.1	1.89 1.89	1.89 0.1	19.66 19.66	19.66 0.1
624	68	5.0 to 10	5.02 9.99	8.08 17.79	2.4 14.22	5.4 24.85	2.09 9.75	5.51 17.65	1.99 8.79	5.33 17.64	13.94 101.73	49.42 36.23
624	112	10 to 15	10.0 14.93	12.74 16.12	4.88 21.09	9.64 20.32	4.13 14.13	8.95 15.99	4.27 13.45	8.73 16.82	26.45 159.44	73.7 32.8
624	99	15 to 20	15.02 19.95	17.26 16.29	6.36 28.82	13.05 21.33	5.03 19.24	12.82 16.2	4.83 17.55	12.21 16.31	21.96 200.88	109.17 4.23
624	102	20 to 25	20.06 24.99	23.01 16.25	8.68 34.92	19.1 21.07	8.06 24.49	17.29 16.14	7.61 22.5	15.87 16.33	34.67 241.56	131.82 3.86
624	132	25 to 30	25.03 29.97	27.63 17.71	10.31 43.47	21.58 27.88	8.26 29.18	19.46 22.92	7.81 25.86	17.95 21.55	38.27 304.86	152.37 3.49
624	105	30 to 99	30.0 43.77	33.68 16.33	13.73 59.86	29.36 20.88	11.88 43.77	25.42 16.2	11.42 34.08	22.31 16.58	41.86 387.09	170.84 3.66

iimp=624, KL=KITTELMANN\_L colour difference pairs %

im	ia	d_rangeC00	LABmin,max,ave	STRESS	CMCmin,max,ave	STRESS	C94min,max,ave	STRESS	C00min,max,ave	STRESS	C85min,max,ave	STRESS
624	624	0.0 to 99	1.91 43.77	21.21 25.07	1.46 59.86	17.04 43.11	1.89 43.77	15.48 33.16	1.89 34.08	14.25 28.87	13.94 387.09	118.69 66.5
624	42	0.0 to 5.0	1.91 15.72	8.18 20.68	1.46 8.65	4.28 30.6	1.89 5.68	3.89 20.49	1.89 4.95	3.68 18.1	13.94 54.25	31.21 37.46
624	0	0.0 to 0.5										
624	0	0.5 to 1.0										
624	0	1.0 to 1.5										
624	2	1.5 to 2.0	1.91 6.39	4.15 16.23	1.46 2.62	2.04 16.27	1.89 2.09	1.99 16.23	1.89 1.99	1.94 17.3	13.94 19.66	16.8 7.51
624	140	5.0 to 10	5.68 29.88	12.74 17.98	4.17 21.35	8.34 29.06	4.83 11.77	7.65 23.65	5.02 9.92	7.4 21.91	20.69 120.96	61.82 33.21
624	161	10 to 15	10.79 38.32	19.74 19.78	8.51 30.91	13.82 31.97	8.26 19.92	12.99 27.55	10.0 14.97	12.5 25.32	36.7 180.79	106.42 3.22
624	142	15 to 20	15.95 41.13	25.73 18.24	13.0 43.47	20.57 29.64	11.88 28.92	18.54 24.25	15.02 19.86	17.34 22.48	50.5 285.33	143.61 3.36
624	109	20 to 25	23.23 41.4	29.84 16.33	17.93 59.86	28.63 20.63	16.19 39.78	25.49 16.19	20.0 24.91	22.12 16.87	69.25 304.86	184.14 3.31
624	27	25 to 30	29.87 40.1	33.36 15.05	22.65 43.62	34.02 29.72	20.04 37.5	30.32 14.83	25.12 29.55	26.73 17.23	78.67 387.09	214.49 3.12
624	3	30 to 99	39.56 43.77	41.07 12.72	31.28 35.03	33.24 12.68	22.29 43.77	35.03 12.72	31.12 34.08	32.17 11.55	90.76 319.49	236.27 0.5

iimp=624, KL=KITTELMANN\_L colour difference pairs %

im	ia	d_rangeC85	LABmin,max,ave	STRESS	CMCmin,max,ave	STRESS	C94min,max,ave	STRESS	C00min,max,ave	STRESS	C85min,max,ave	STRESS
624	273	0.0 to 99	1.91 41.4	16.6 22.34	1.46 59.86	11.94 37.76	1.89 39.78	9.81 31.45	1.89 31.12	9.65 26.67	13.94 97.73	59.18 34.93
624	0	0.0 to 5.0										
624	0	0.0 to 0.5										
624	0	0.5 to 1.0										
624	0	1.0 to 1.5										
624	0	1.5 to 2.0										
624	0	5.0 to 10										
624	2	10 to 15	6.39 8.58	7.49 16.23	2.62 3.77	3.2 16.27	2.09 3.06	2.57 16.23	1.99 3.05	2.52 17.3	13.94 14.28	14.11 7.51
624	4	15 to 20	1.91 7.98	5.85 13.41	1.46 3.56	2.66 13.37	1.89 2.99	2.44 13.41	1.89 2.99	2.39 11.48	16.3 19.66	17.77 5.98
624	11	20 to 25	2.02 15.16	6.44 15.68	1.55 6.98	3.6 33.85	2.0 5.72	3.43 15.6	2.0 5.64	3.3 17.63	20.21 24.77	21.87 39.45
624	8	25 to 30	8.54 15.72	12.55 18.42	5.4 8.07	6.51 18.38	4.7 7.95	5.49 18.42	4.34 7.21	5.23 16.65	26.45 29.82	28.17 11.25
624	248	30 to 99	4.66 41.4	17.43 22.03	3.0 59.86	12.71 36.97	3.02 39.78	10.41 31.01	2.92 31.12	10.25 26.94	30.65 97.73	62.86 34.03

see similar files: http://130.149.60.45/~farbmetrik/VE89/VE89LONA.TXT /PS  
technical information: http://www.ps.bam.de or http://130.149.60.45/~farbmetrik

TUB registration: 20140801-VE89/VE89LONA.TXT /PS  
application for measurement of display or printer output, no separation  
TUB material: code=rh4ta